



De'Longhi EC155 Water Valve Replacement

Replace the water valve in your EC 155.

Written By: David Griffith



INTRODUCTION

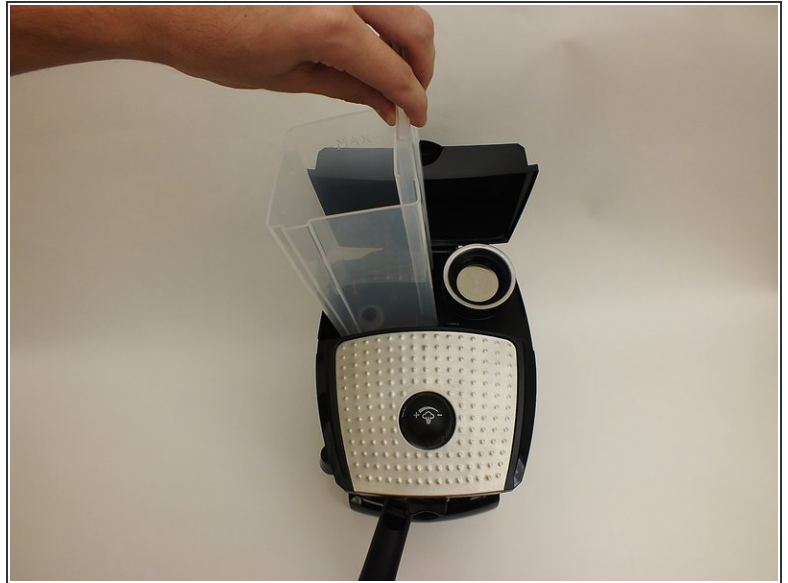
This replacement may be needed if the water pump is still functioning, but there are still problems with the flow of water.



TOOLS:

- [Phillips #2 Screwdriver](#) (1)
 - [iFixit Opening Tools](#) (2)
-

Step 1 — Water Reservoir



- Flip open the top panel to reveal water reservoir.
- Grab the water reservoir by the handle and lift out.

Step 2 — Bottom Panel



- Flip the device on its head.
- Using the Phillips #2 screwdriver, unscrew the four 12 mm screws found at each corner of the bottom panel.
- Lift the panel off or flip the device over and let the panel drop out.

Step 3 — Top Panel



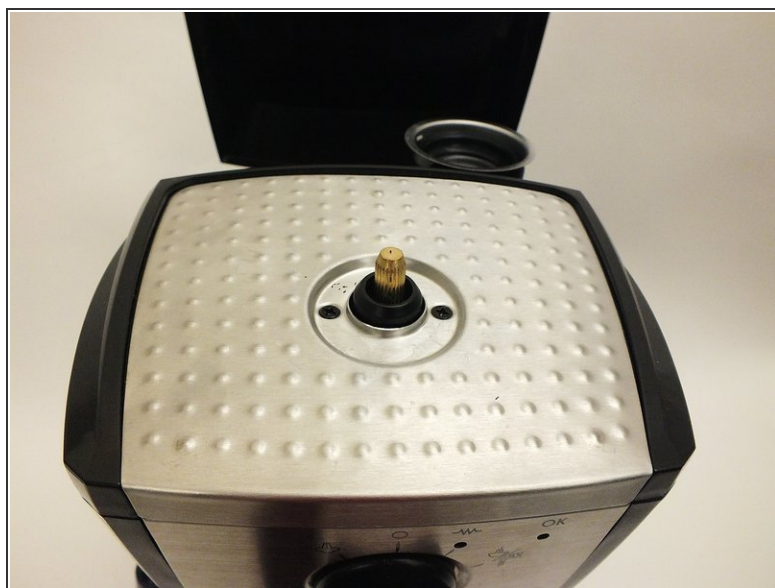
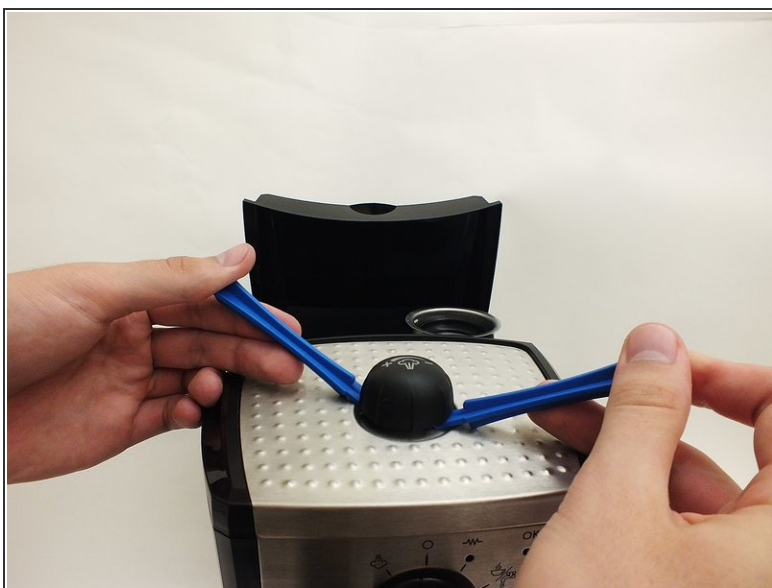
- ⓘ Before flipping the device, removed the black container and grill.
- Flip the device on its head, front end facing you.
- Using the Phillips #2 unscrew the two 52 mm screws found underneath the top portion of the device.

Step 4



- Flip the device back to its proper orientation.
- Using the Phillips #2 screwdriver remove the two 52 mm screws found on the lip next to the reservoir.

Step 5



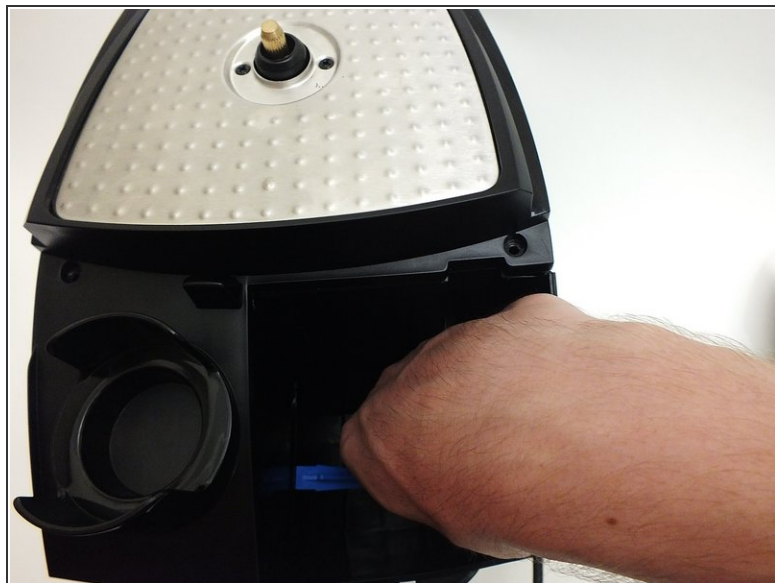
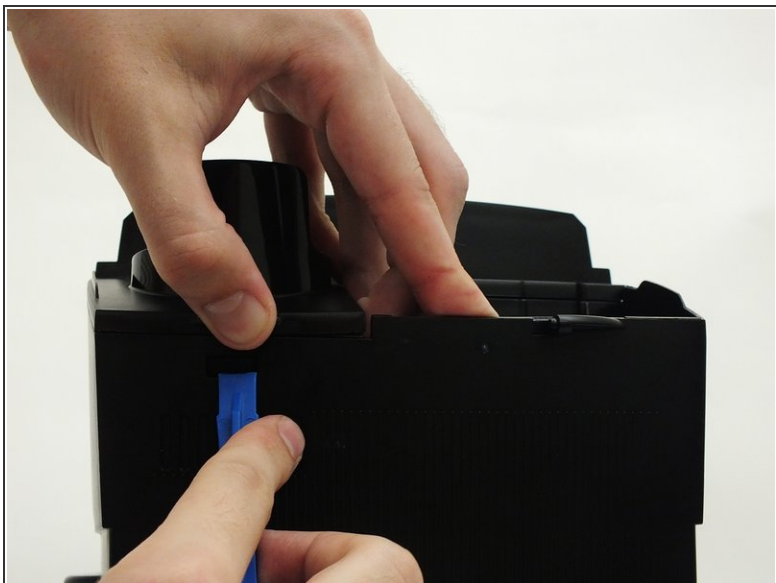
- Insert the two plastic opening tools beneath the top knob.
- Use the two plastic opening tools as leverage to lift the top knob off.

Step 6




- Grasp the lid firmly with both hands.
- Pull mightily with both hands away from the device.
- ⓘ If you hear a slight snapping sound, it is supposed to do that.

Step 7



- Use a plastic opening tool to push in the slot on the back panel while lifting.
- Similarly, reach into where the reservoir used to be and insert a plastic spudger underneath the inside panel.

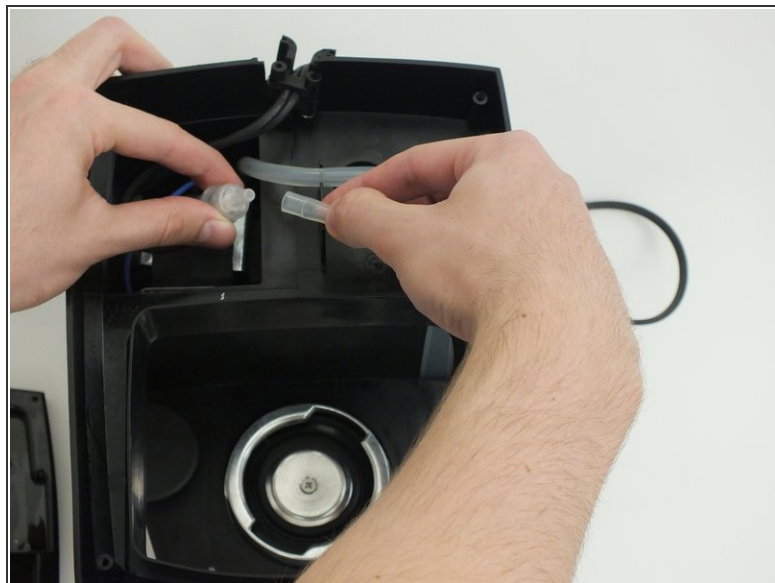
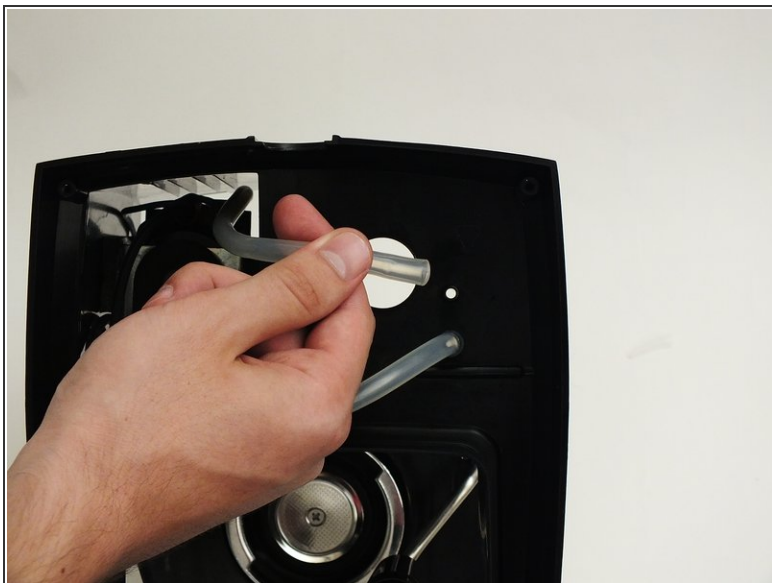
 We recommend to not use your fingers for this step because there is a chance they will be pinched.

Step 8



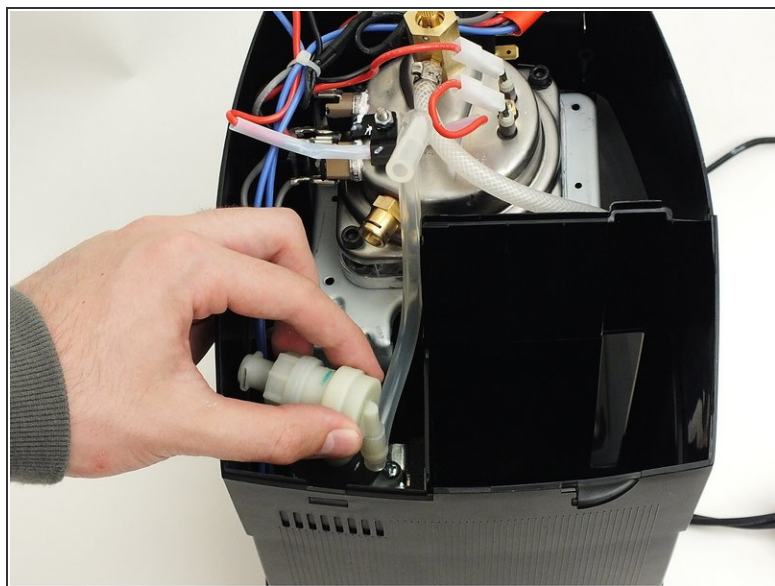
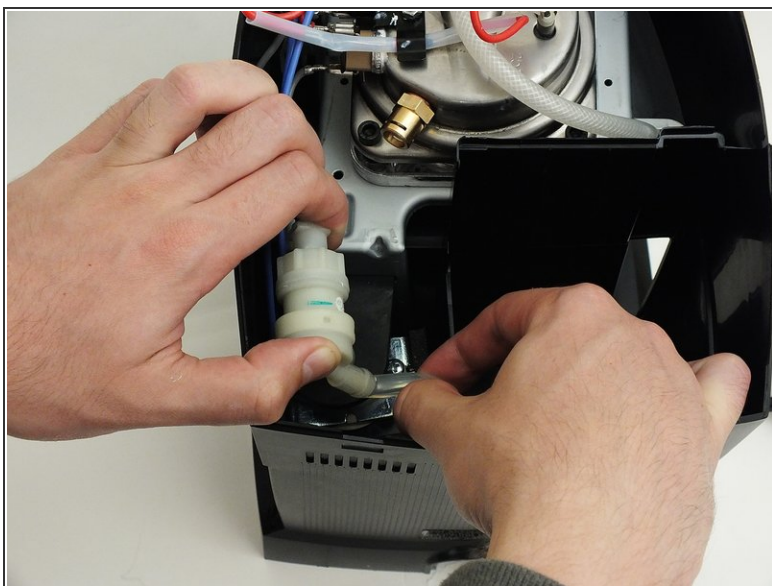
- You are now ready to lift the top off.
- Place one hand near the back, the other at the front, and lift.
- ⓘ You may want to lift the front and back individually by pulling one a little off the part before the other. Afterwards, lifting the top off entirely will be easier.

Step 9 — Water Valve



- Flip the device and remove one end of the tube from the water reservoir hole.

Step 10



- Pull the tube through the chamber with the water pump so it comes out of the top end.
- Twist the valve counterclockwise while pulling gently.

To reassemble your device, follow these instructions in reverse order.