



DeLonghi ESAM xxxx Solenoid Replacement

DeLonghi ESAM Solenoid Replacement

Written By: VauWeh



INTRODUCTION

If hot water leaves the automat on the right rear side perhaps the solenoid valve is damaged and must be replaced.



TOOLS:

- [screwdriver according to the screws used / passender Schraubenzieher](#) (1)
- [Slip Joint Pliers](#) (1)
- [Threader](#) (1)




PARTS:

- [Solenoid Valve](#) (1)
<https://www.juraprofi.de/DeLonghi-Ersatzteile/Ventile-und-Schalter/Solenoidventil-2-fuer-DeLonghi-EAM-und-ESAM-Kaffeevollautomat::6557.html>
- [Doppelraccord Solenoid](#) (1)
- [Raccord Solenoid](#) (1)

Step 1 — Solenoid



 Before you begin: **UNPLUG!**
Remember not to touch current leading parts, if plugged in.

Step 2 — Open the machine



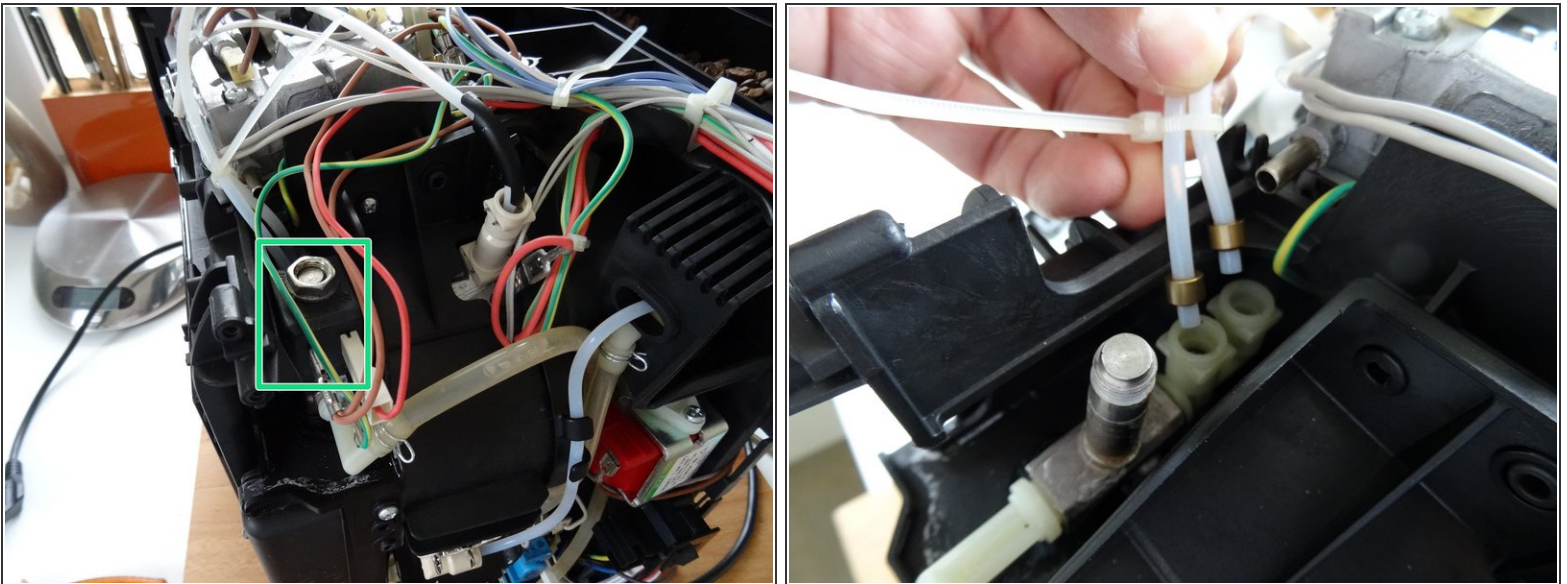
- Rearside: unscrew two screws, push upside.
- Side covers: unscrew two screws, push backwards.
- Top: unscrew four screws, disassemble the adjuster of the grinder as shown in step 3


Step 3 — Adjuster



- Remove the cap, then unscrew the exposed screw. Take away the adjuster.
- Now you can remove the top of the machine.

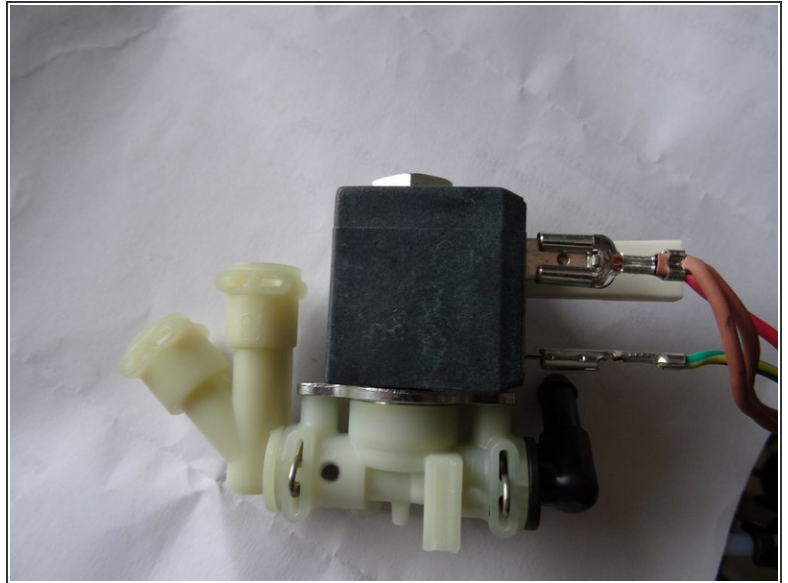
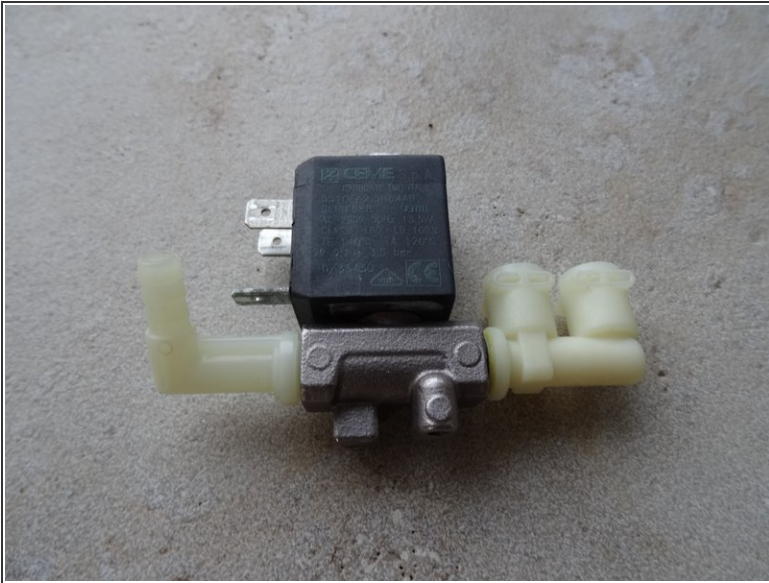
Step 4 — The Solenoid Valve



 Now plug in and try to get a cup of coffee but **CAUTION**, don't touch anything, high voltage.

- On top of the boiler you can see the valve. Can you see if the water really drips out of the valve? Pull the plug!

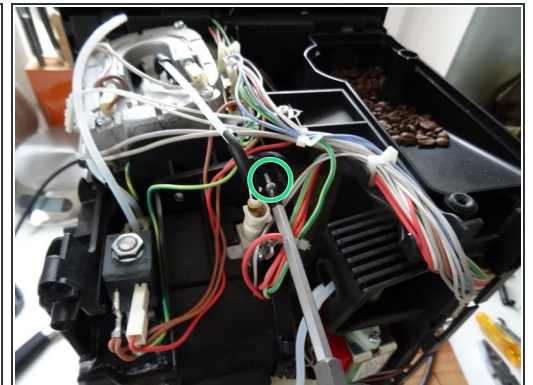
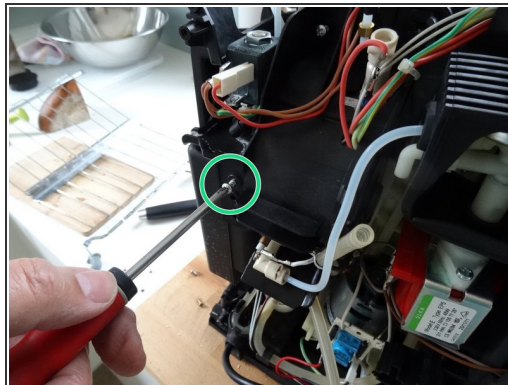
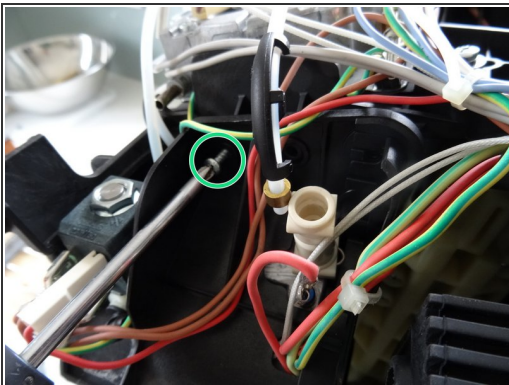
Step 5 — Old and new



i Of course buy a new one at a DeLonghi supplier. The old one normally has a metal body, the new one plastic. That provokes some problems. You also need raccords for directions in- and out. The outgoing one is double, but there may be differences. In the photo they are already assembled.

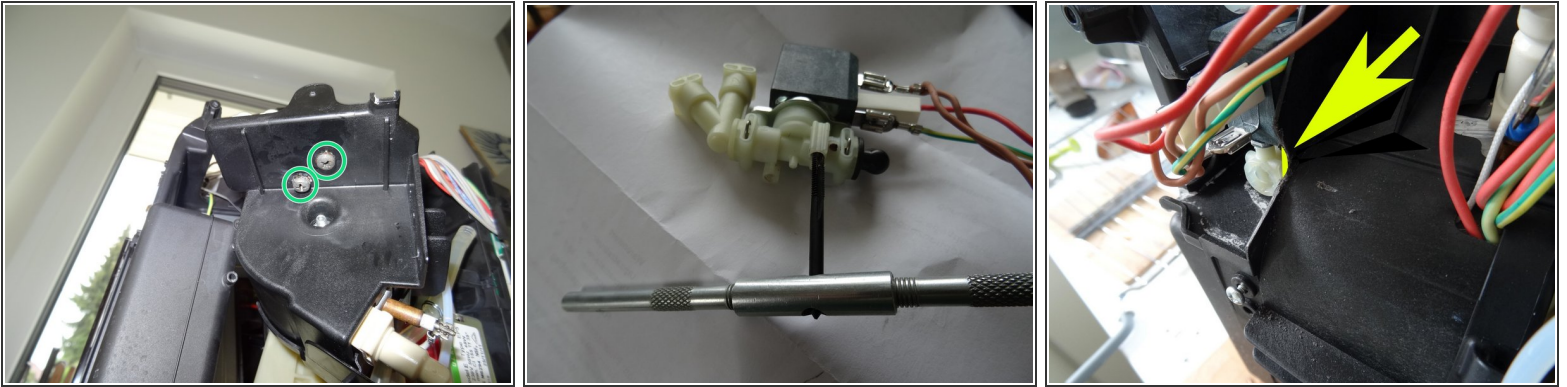
! Attention! The valve has a direction. The sense of the flow is towards the black point. The double raccord must be there!

Step 6 — Changing 1



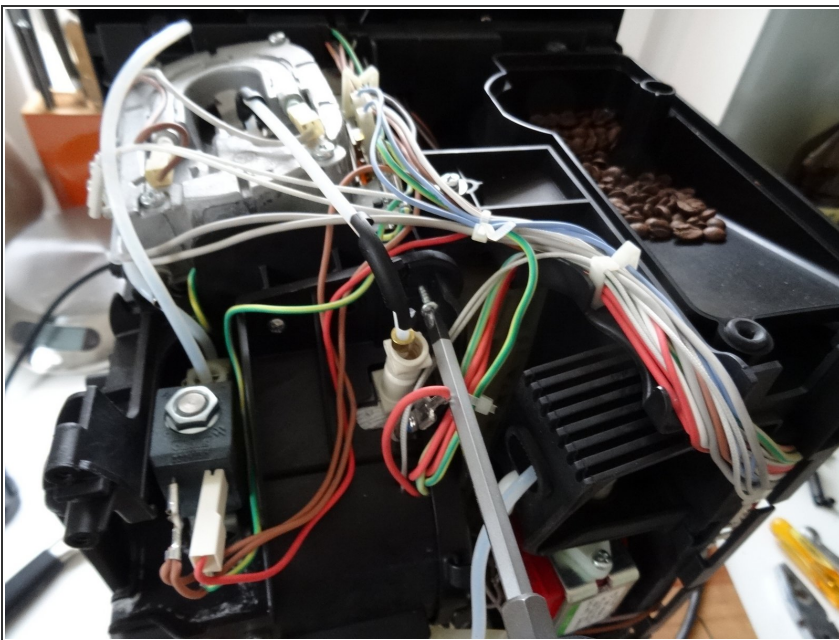
- The boiler and valve are fixed with three screws. Also loosen some cables and hoses until the boiler can be removed.

Step 7 — Changing 2



- Two screws hold the valve looking upwards.
- As the old one uses M4 screws you have to cut the thread into the plastic body. Use a threader.
- and make a circle cut into the plastic of the holder of the boiler in order to let the incoming hose pass by.

Step 8 — Finito!



- Hopefully you can get a cup of coffee! Then reassemble all parts.

Have a cup of coffee!