



DeWALT Hammer Drill DW511 Lever Assembly Replacement

How to replace a DeWALT Hammer Drill DW511 lever assembly.

Written By: Kodiak Kunder



INTRODUCTION

Welcome to the Dewalt Hammer Drill DW511 lever assembly replacement guide. The lever assembly controls whether the drill is in hammer mode or normal drill mode. Over time, the lever assembly can become damaged and need replacement. A damaged lever assembly can become stuck and prevent the drill from running.

Caution should be taken when working with the drill. It needs to be unplugged before working on any part of it.



TOOLS:

- [iFixit Opening Tools](#) (1)
 - [ESD Safe Tweezers Blunt Nose](#) (1)
 - [Tweezers](#) (1)
 - [T20 Torx Screwdriver](#) (1)
-

Step 1 — Back Cover



- Remove three 19mm T20 Torx screws from the back of the drill.

Step 2



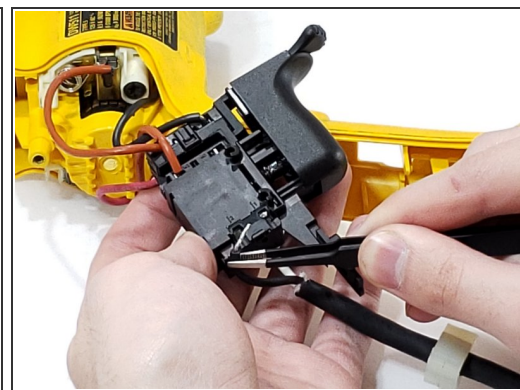
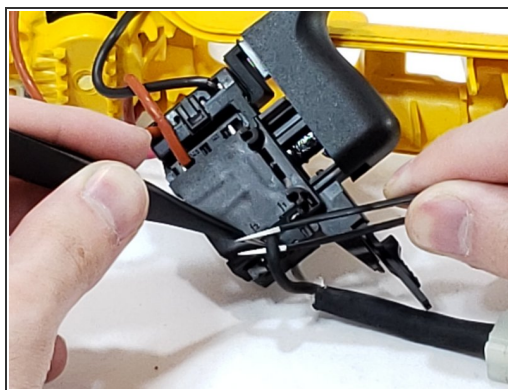
- Place an opening tool in the groove line of the handle and pop the back loose.
- Grab the drill with two hands and pull the cover off.

Step 3 — Power Cord



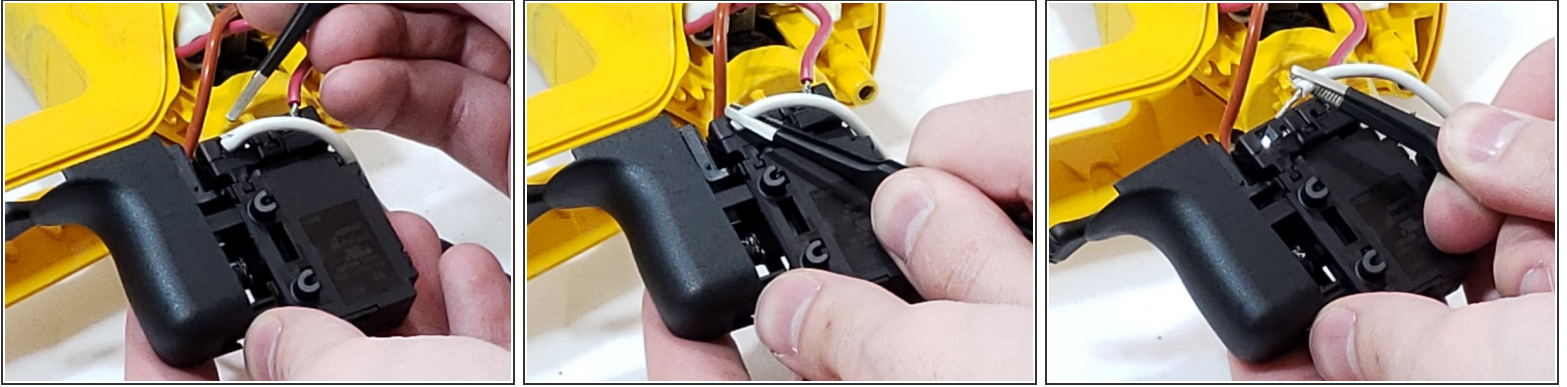
- Firmly grab the body of the trigger.
- Slowly pull the trigger until the entire body is out and only attached by wires.

Step 4



- With sharp point tweezers, push the little metal flap up in the hole holding the wire.
- Clamp the wire with blunt tweezers, and slowly pull the wire out.

Step 5



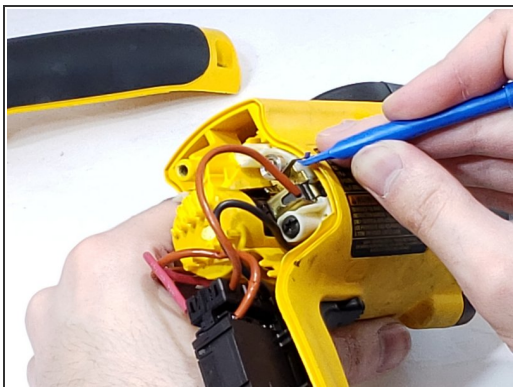
- With a pair of blunt nose tweezers, grab the white wire.
- Carefully wiggle the wire loose.
- Pull the wire slowly until it comes out.

Step 6



- With both wires free, the power cord is free from the trigger body.

Step 7 — Brushes



- Use an opening tool to lift up the spring holding down the brush.
- Remove the brush from its holding.

Step 8



- With a pair of blunt nose tweezers, grab the red wire.
- Carefully wiggle the wire loose.
- Pull the wire slowly until it comes out.

Step 9 — Lever Assembly



- Remove two 45mm T20 Torx screws.
- Remove one 30mm T20 Torx screw.

Step 10



- Pull off the GR case and set it aside.

Step 11



- Grab the gear case cover and gently pull it out just enough to where it exposes the lever assembly.
 - ❗ It is important that the brushes are removed before you do this step or you may damage your brushes.
- The lever assembly can now be lifted out.

Step 12



- With the old lever assembly removed you can now replace it with a new one.

To reassemble your device, follow these instructions in reverse order.