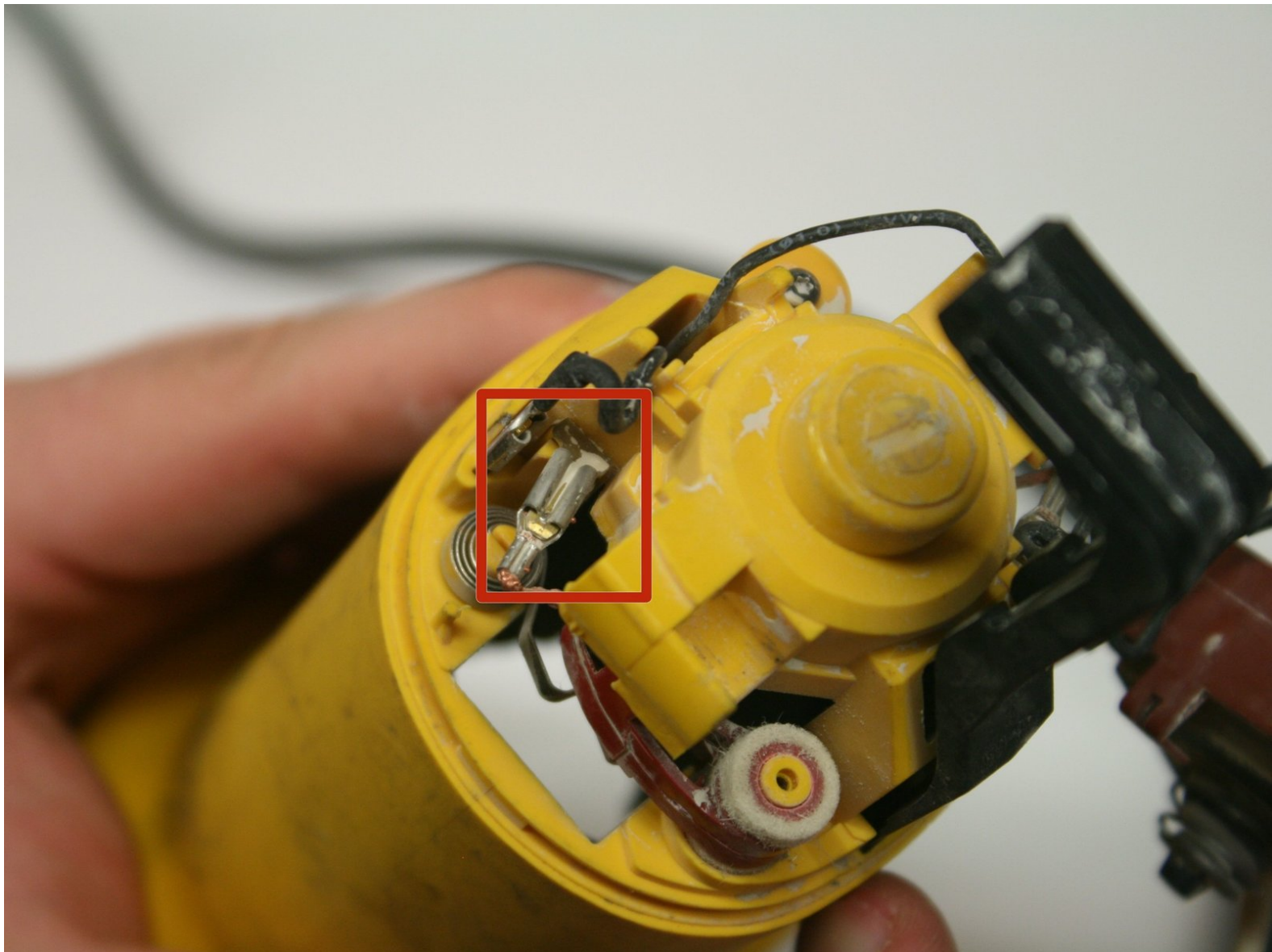




# DeWalt D28110 Brush and Spring Replacement

Sometimes the brush connecting the rotor to the power will break and need to be replaced.

Written By: Kean Wee



---

## INTRODUCTION

This guide will walk you through replacing the brush and spring components of the grinder. These are both located at the base of the brush motor and can be easily replaced.



### TOOLS:

- [Spudger](#) (1)
-

## Step 1 — Disassembling DeWalt D28110 Back Panel Disassembly



- Using the T-15 screwdriver, remove the four 22-mm torx screws holding the back panel in place.
- ⚠ Unplug the grinder before any disassembly.

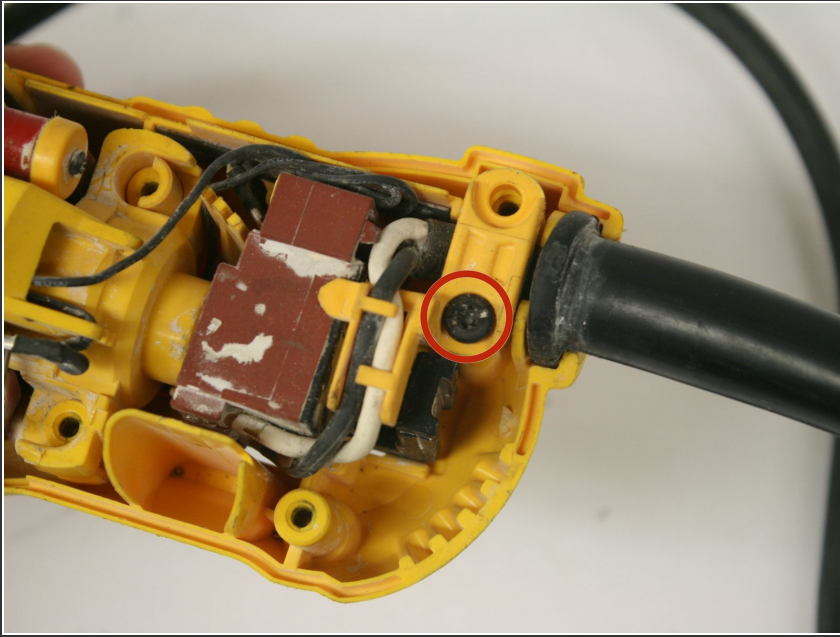
## Step 2



- Use the edge of the spudger to loosen and remove the back panel.

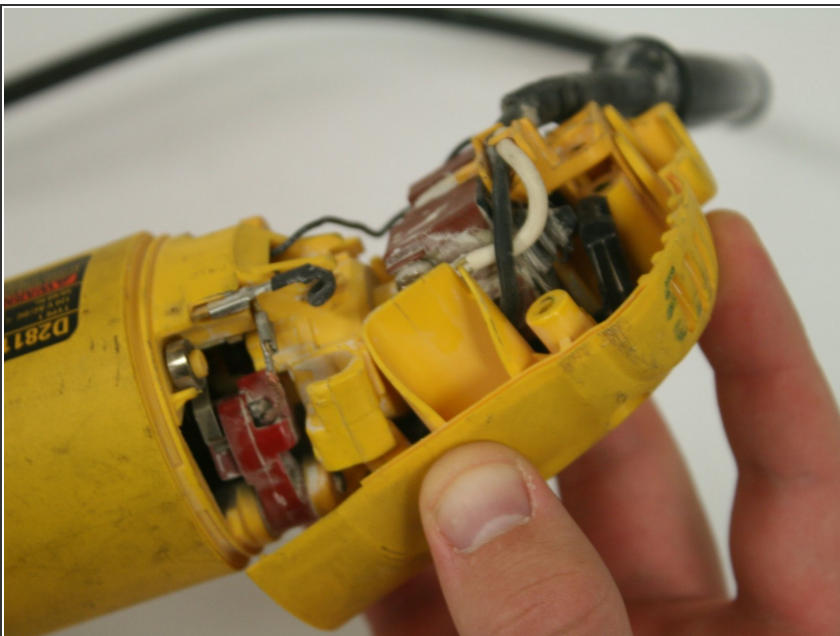


### Step 3



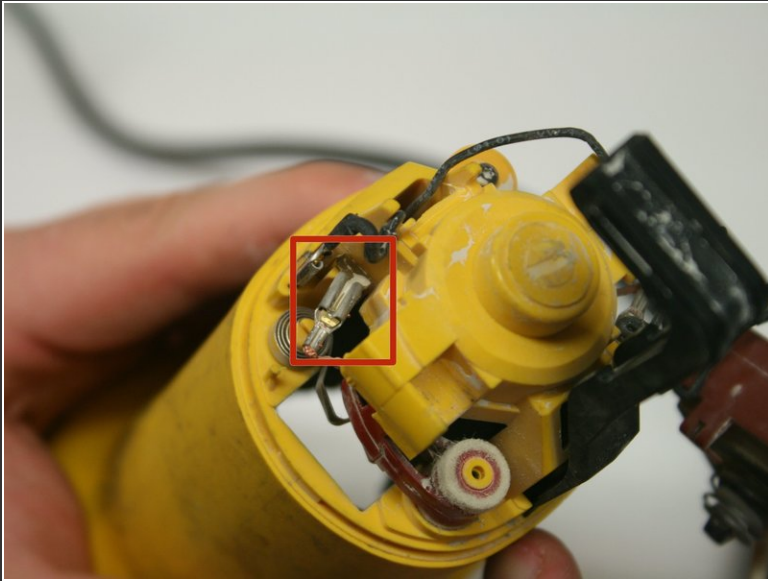
- Remove the single 20-mm torx screw holding the rear panel in place.

### Step 4



- Pull back the rear side of the back panel.

## Step 5 — Brush and Spring



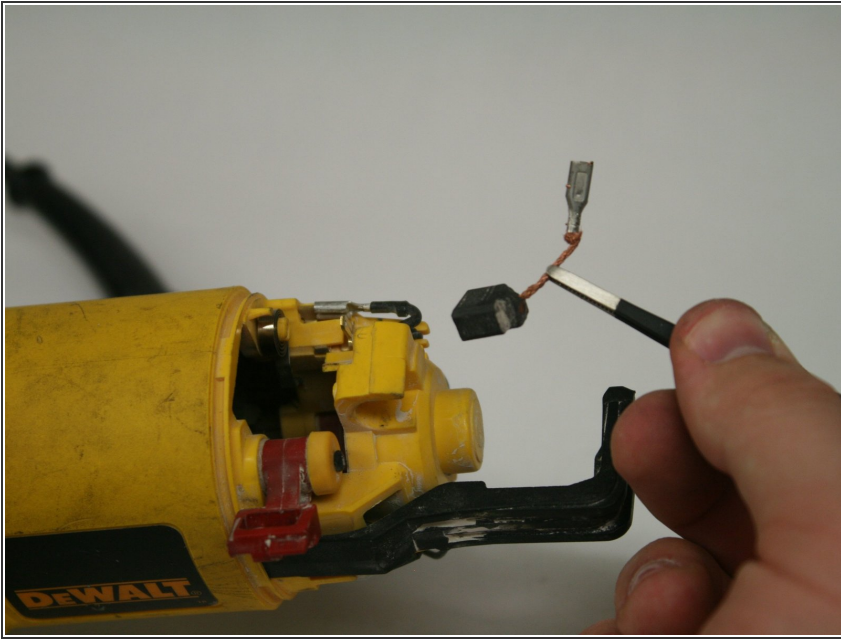
- Gently pull to disconnect brush connector.

## Step 6



- Use the edge of the spudger to slide the spring off its post.

## Step 7



- Use tweezers to gently remove the brush and cable.

To reassemble your device, follow these instructions in reverse order.