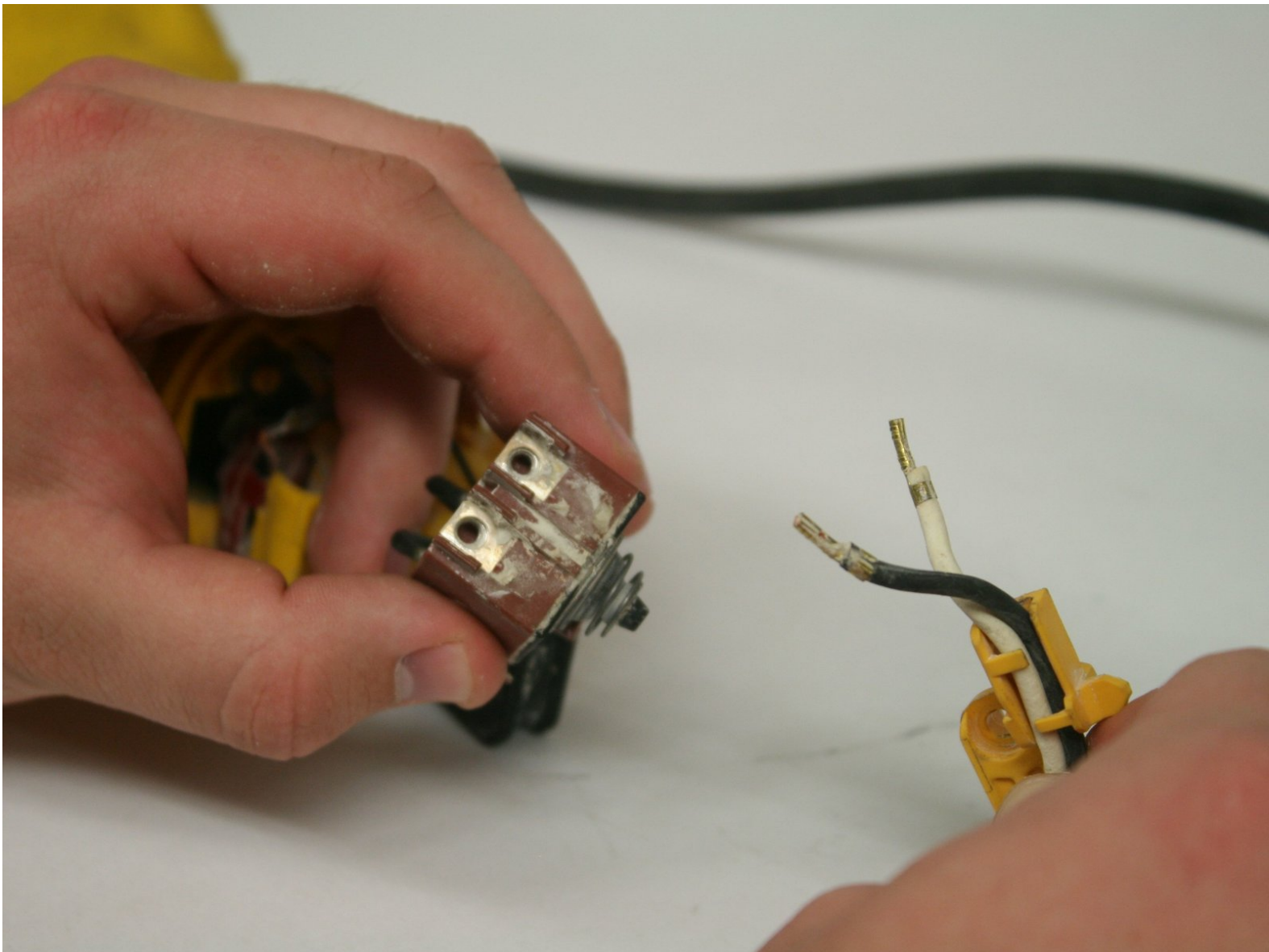




# DeWalt D28110 Power Cord Replacement

A torn or malfunctioning power cord is dangerous and may be the reason for loss of power. This guide explains how to replace the entire cable.

Written By: Andrew



## INTRODUCTION

This guide will take you through removing the back panel assembly and disconnecting the power cable from the inner electric components.

---

### TOOLS:

- [JIS Driver Set](#) (1)
  - [Spudger](#) (1)
  - [T15 Security Torx Screwdriver](#) (1)
-

## Step 1 — Disassembling DeWalt D28110 Back Panel Disassembly



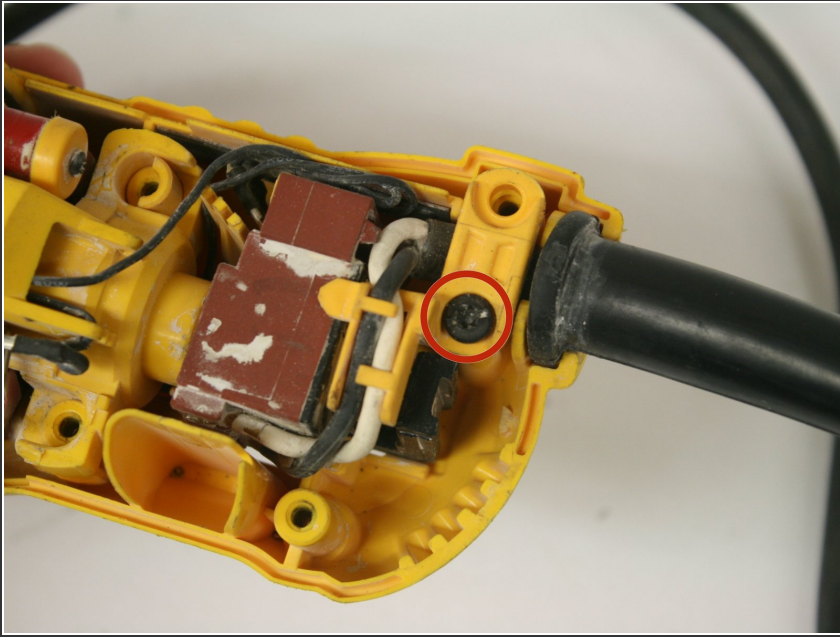
- Using the T-15 screwdriver, remove the four 22-mm torx screws holding the back panel in place.
- ⚠ Unplug the grinder before any disassembly.

## Step 2



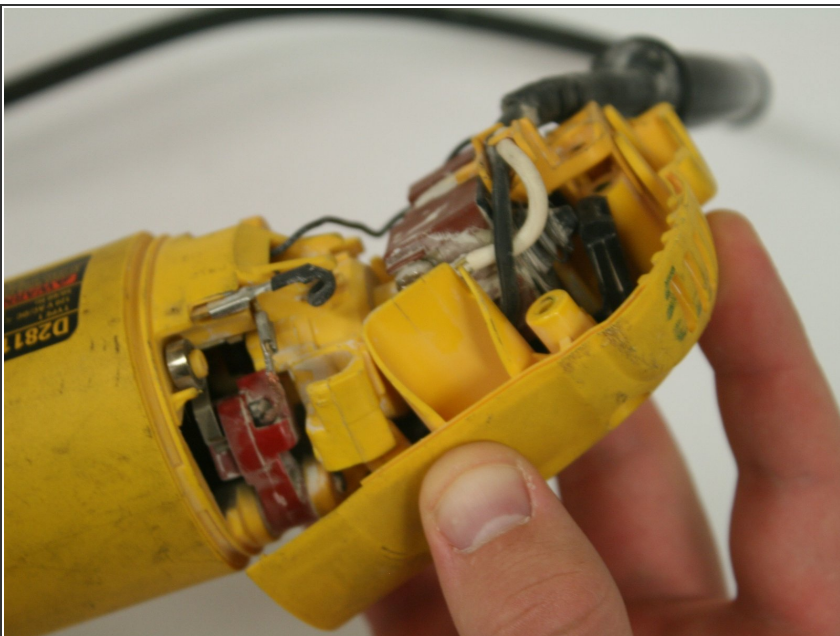
- Use the edge of the spudger to loosen and remove the back panel.

### Step 3



- Remove the single 20-mm torx screw holding the rear panel in place.

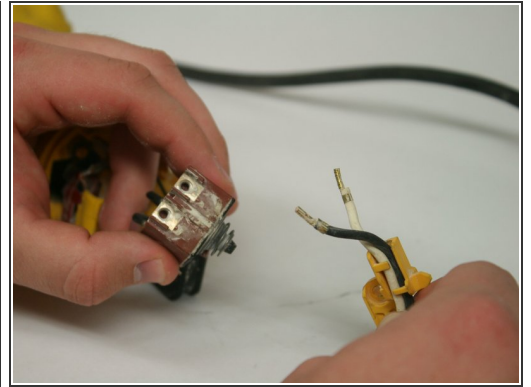
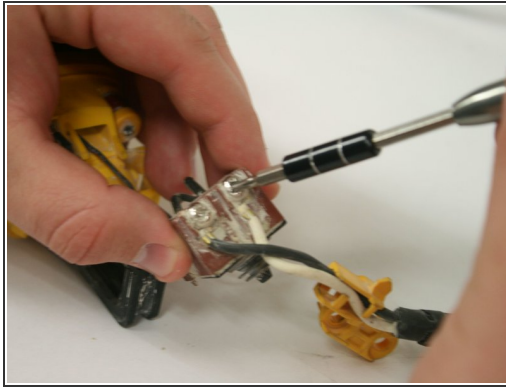
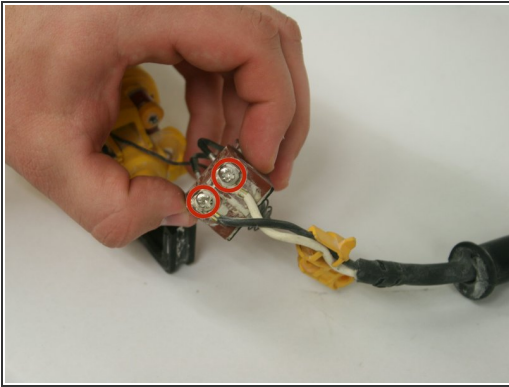
### Step 4



- Pull back the rear side of the back panel.

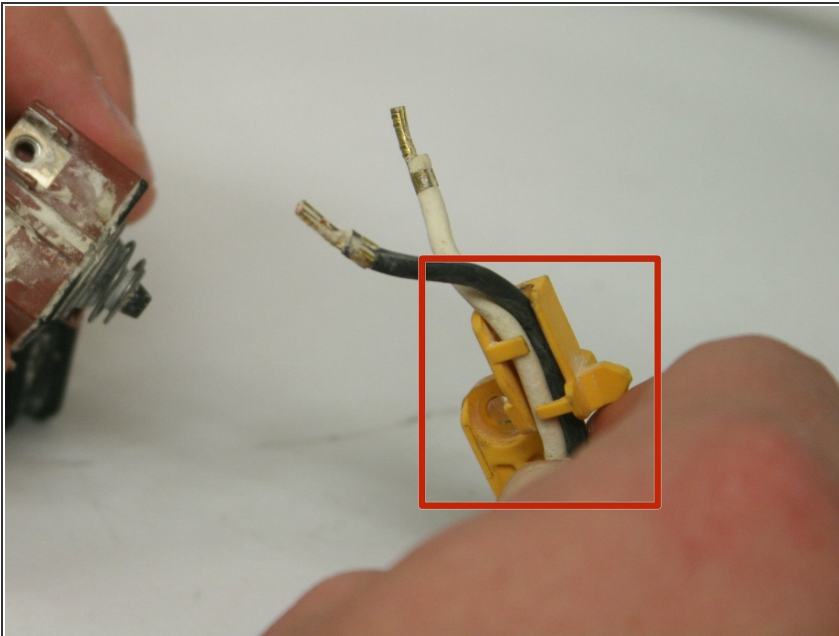


## Step 5 — Power Cord



- Locate the red switch box.
- Using the J-10 screwdriver, unscrew the screws and detach the wires.
  - ☑ Be sure to remember under which screw the "ground" wire (black) goes.

## Step 6



- Unthread the two wires from the power cord clamp.

To reassemble your device, follow these instructions in reverse order.