



DeWalt DC970 Drill Assembly Replacement

The drill assembly is the plastic shell that holds the inner workings of the drill. This guide will tell how to remove it to gain access to the inside of the drill.

Written By: Jonathan Hamel



INTRODUCTION

If you need to replace a part within the drill, then you need to remove the outer shell of the drill. By following this guide you will know how to take apart the drill assembly to get inside of it.

TOOLS:

- [T15 Security Torx Screwdriver](#) (1)
 - [Torque Wrench](#) (1)
-

Step 1 — Battery



- Compress the buttons on either side of the battery and lift the drill away from battery.

Step 2



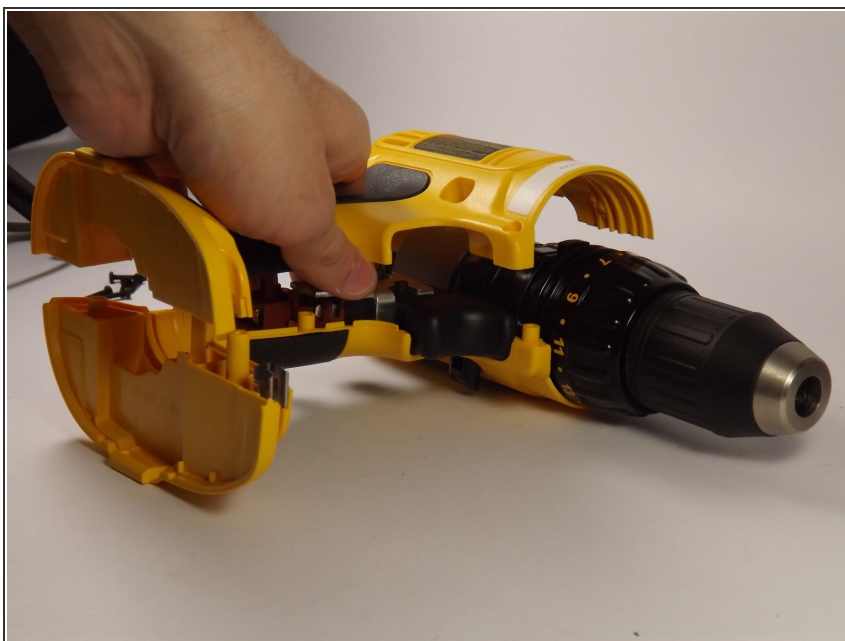
- Remove battery from drill.

Step 3 — Drill Assembly



- Remove the eight 16 mm, Torx Security #15 screws.

Step 4



- Lay the drill on its side and gently lift the top half off it.

To reassemble your device, follow these instructions in reverse order.