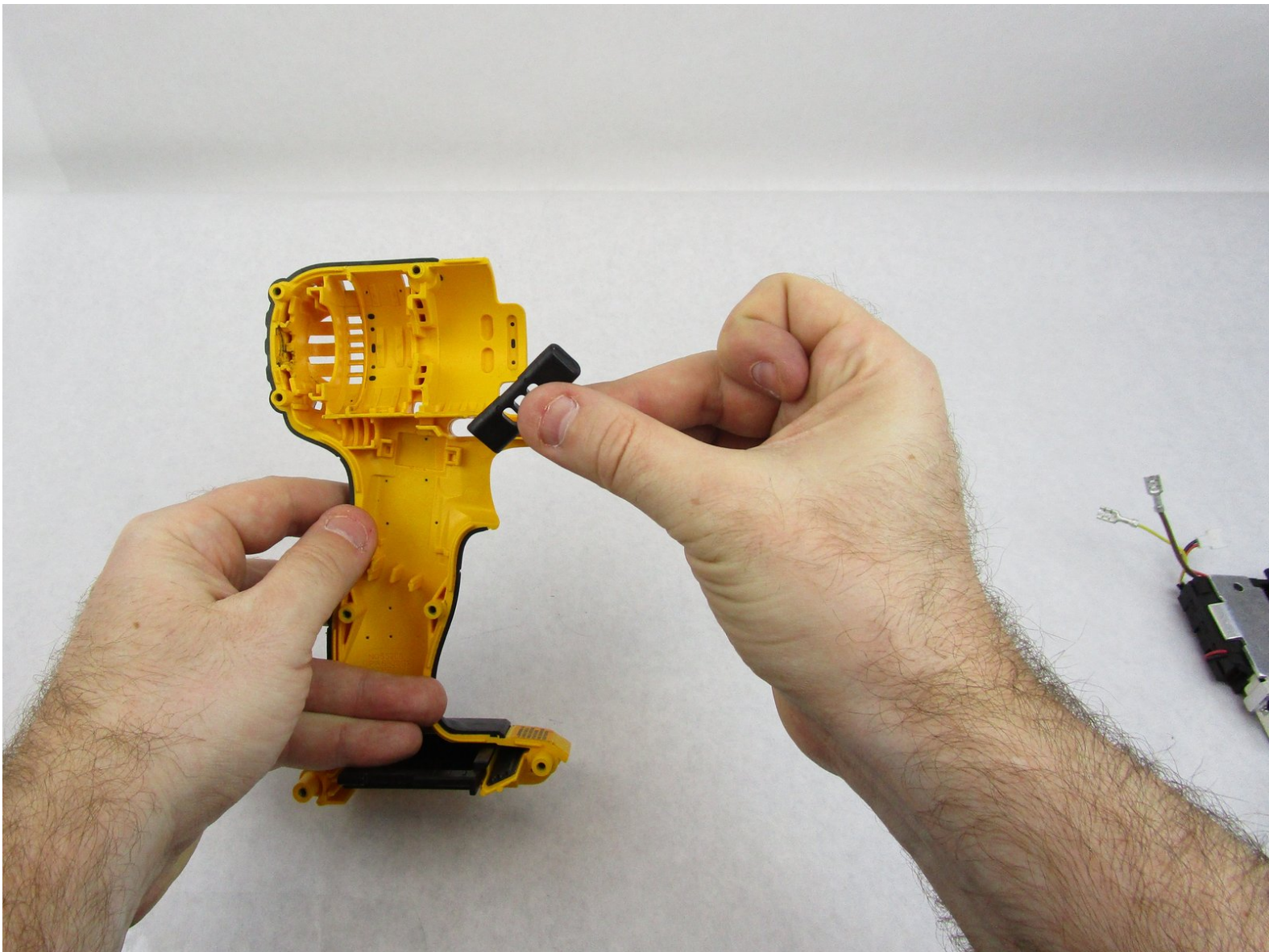




# DeWalt DCF885 Selector Switch Replacement

Once the switch is removed, carefully pinch the selector switch and remove it by lifting straight up and out.

Written By: Brittney Dismuke



---

## INTRODUCTION

This guide will show you how to replace the selector switch.



### TOOLS:

- [T10 Torx Screwdriver](#) (1)
  - [ESD-safe pry tool](#) (1)
-

## Step 1 — Battery



- Press the battery release button at the top of the battery.

## Step 2



- Pull the battery away from the tool.



## Step 3 — Motor Assembly



- Remove the eight 18 mm Torx Security #10 screws.

## Step 4



- Separate the two halves of the outer case. Set the empty side down and out of the way.

## Step 5



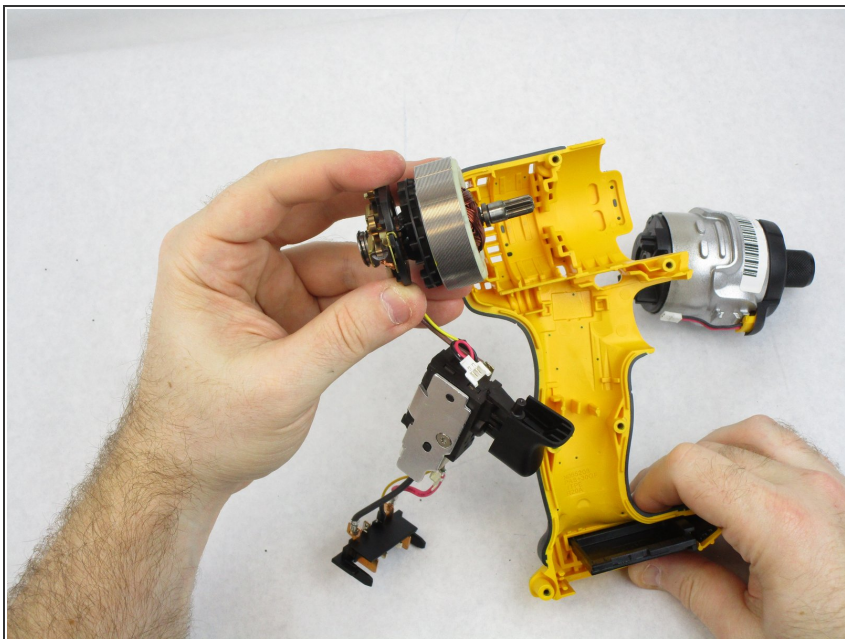
- Disconnect the connector from the motor assembly.

## Step 6



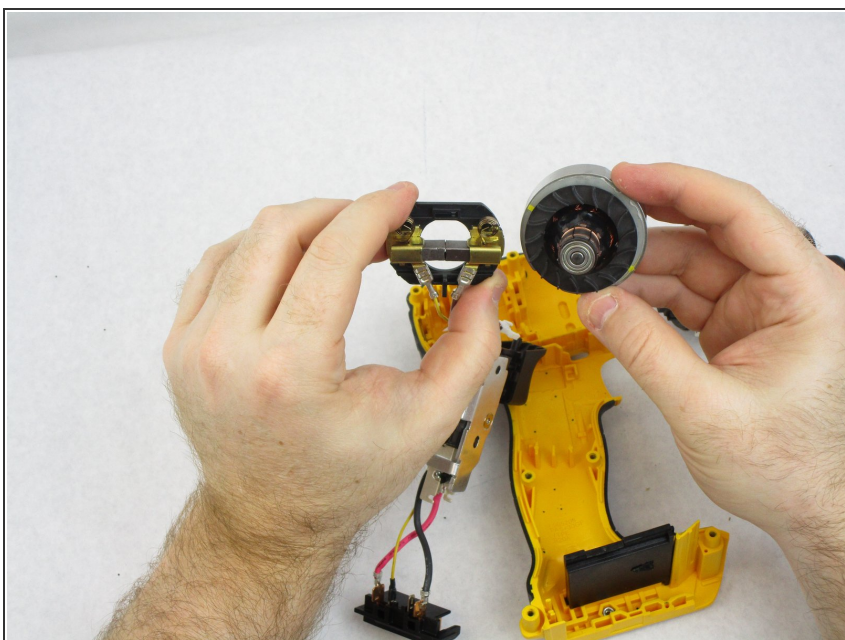
- Pull the motor away from the brush assembly.

## Step 7 — Brush Assembly



- Lift the brush assembly out of the drill case.

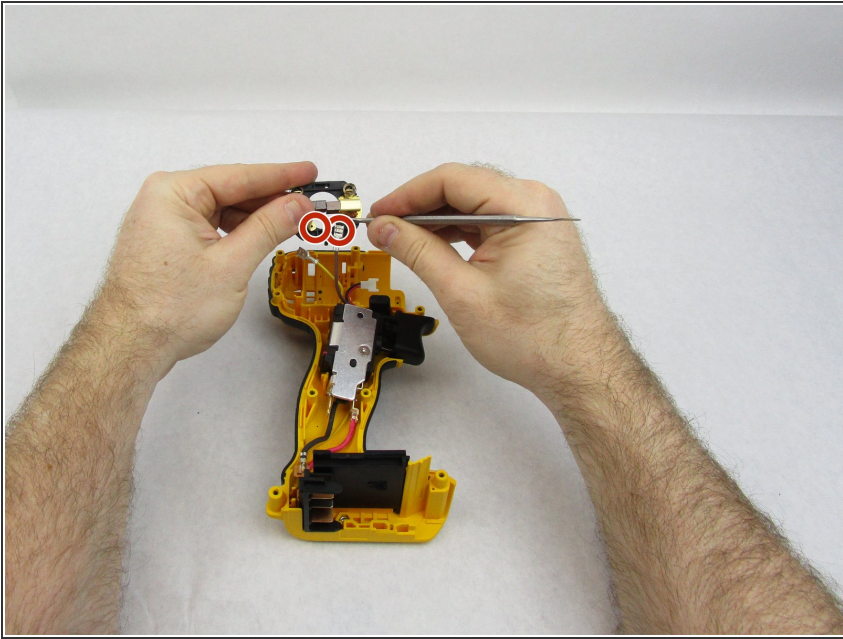
## Step 8



- Pull the armature assembly apart from the brush ring assembly.

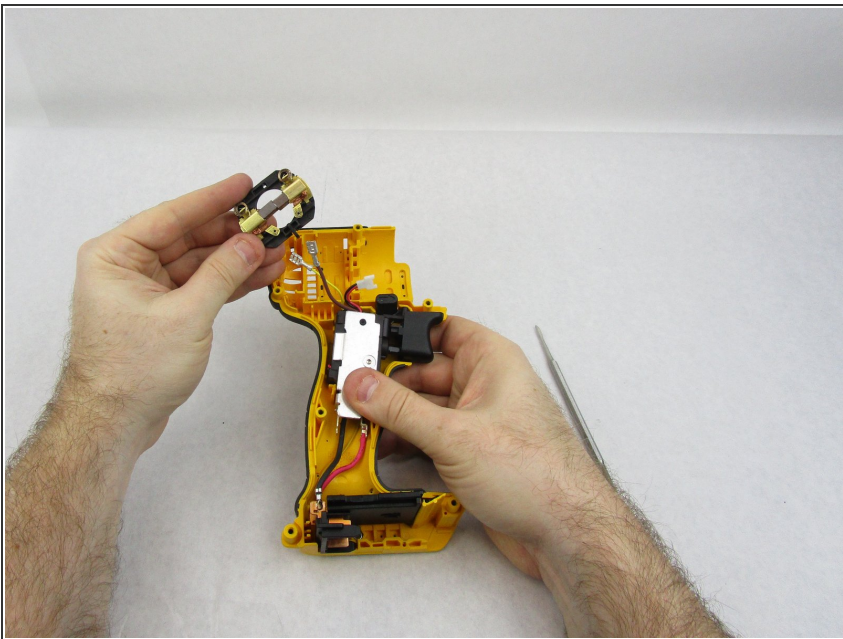


## Step 9



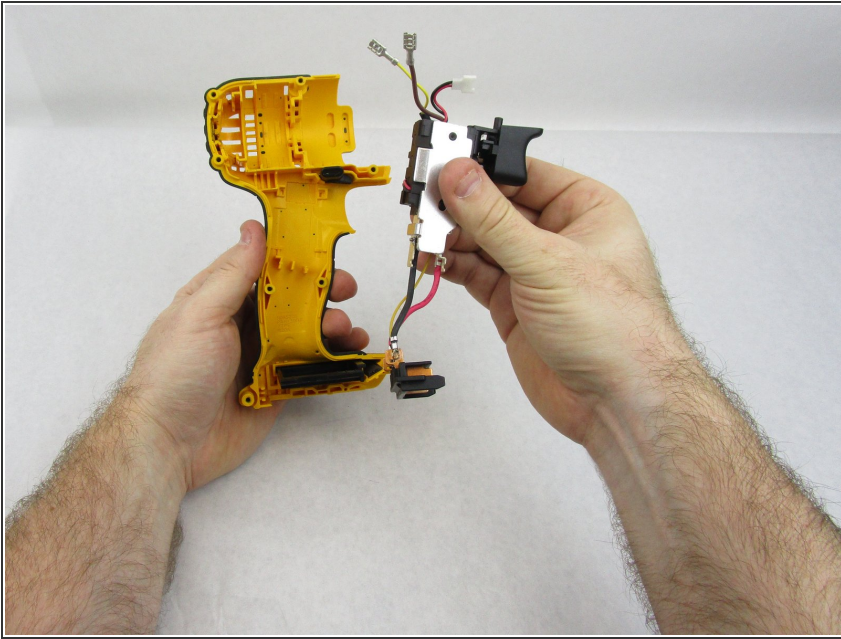
- Pry the two circled connectors apart from the brush ring assembly.

## Step 10



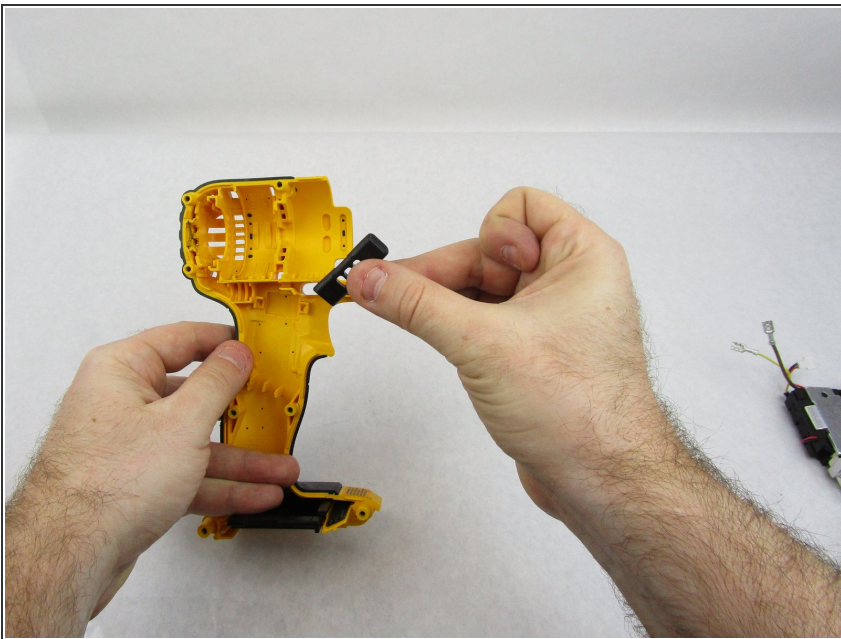
- The brush assembly is now removed from the drill body.

## Step 11 — Switch Assembly



- Pull the switch assembly up and out of the drill case.

## Step 12 — Selector Switch



- Pull the selector switch out from the outer case.

To reassemble your device, follow these instructions in reverse order.