



DeWalt DW660 Power Switch Replacement

This repair guide will show you how to replace the power switch on the DeWalt DW660 Cut-Out tool.

Written By: Joseph Pacitto



INTRODUCTION

The DeWalt DW660 has an amazing dynamic power switch that makes operating the device extremely easy. The bump off feature of the switch allows for an easy shut off with minimal effort.



TOOLS:

- [T20 Torx Screwdriver](#) (1)
-

Step 1 — Power Switch



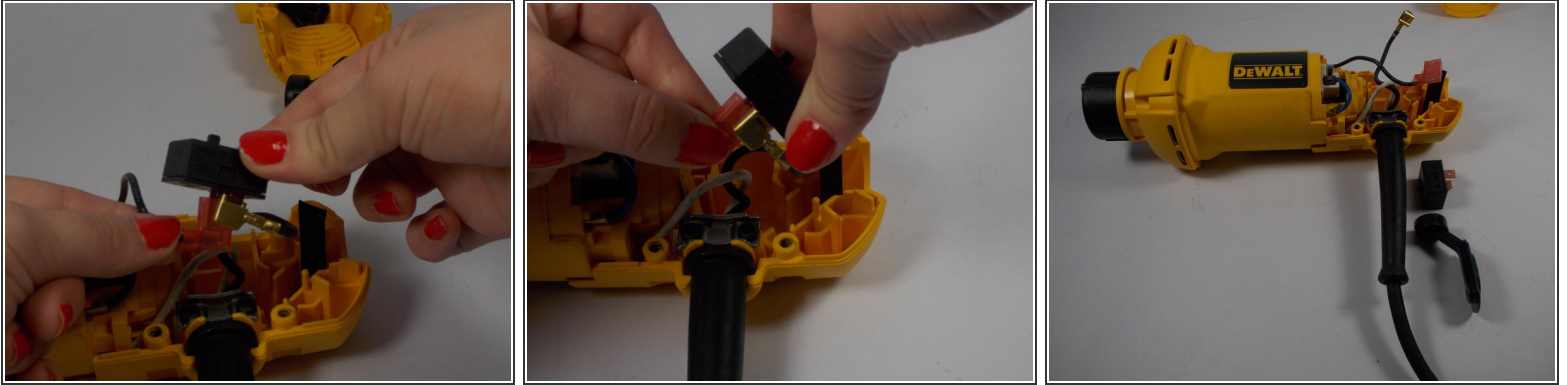
- Remove the four 19mm T20 Torx screws at the rear of the device.


Step 2



- Remove the cover to expose the inside of the tool.

Step 3



- Pick up the switch from the device with the wires still attached.
 - Remove the actuator from the switch.
 - Pull the two wires from the switch.
-  Make sure to remember where each pin went on the switch after replacement.

To reassemble your device, follow these instructions in reverse order.