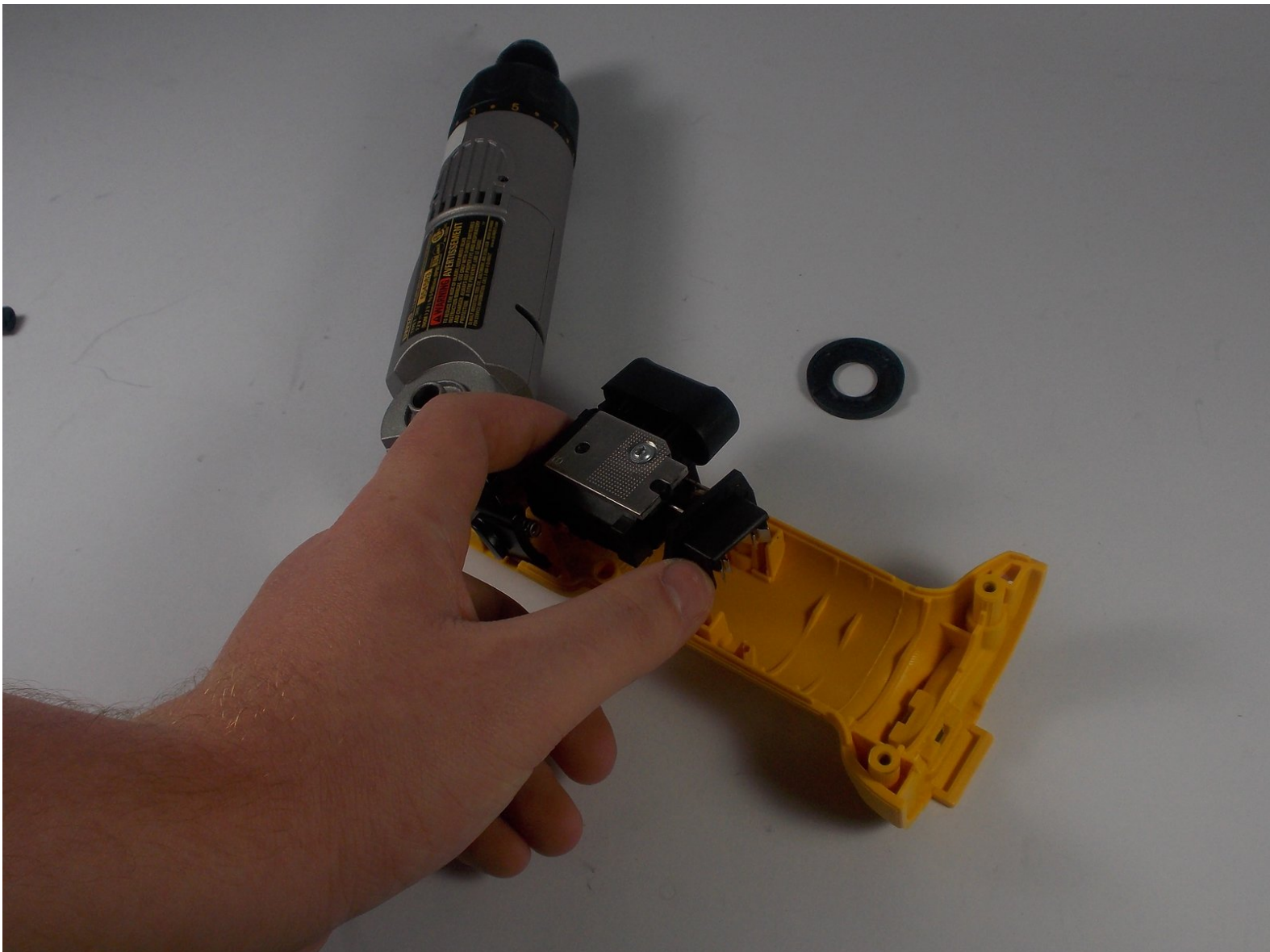




DeWalt DW920 Trigger Replacement

This guide will show how to replace a broken trigger.

Written By: Stephen Rada



INTRODUCTION

One of the few things that can cause the DeWalt DW920 to not function correctly is that there is an issue with the trigger. This guide will help replace the trigger to get your drill back to working order.

TOOLS:

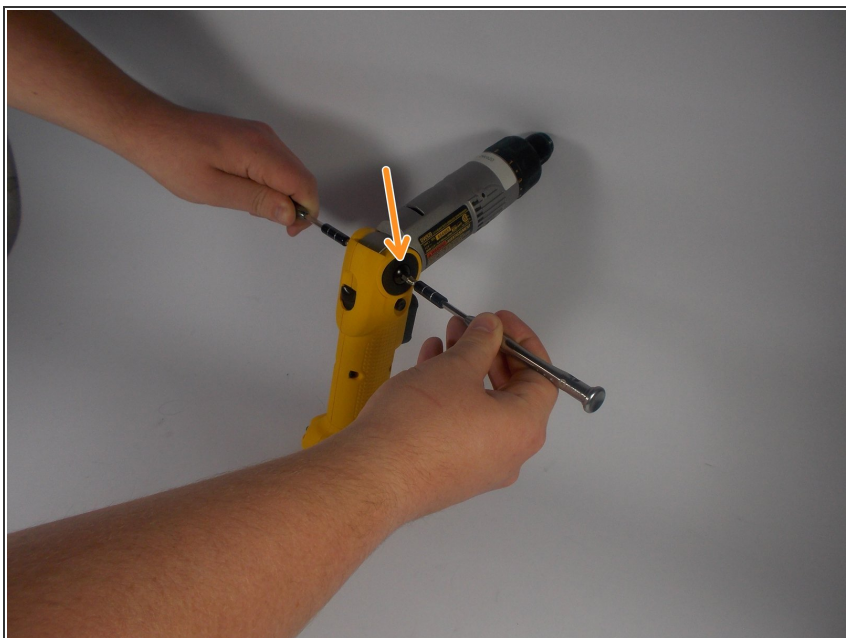
- [T10 Torx Screwdriver](#) (1)
 - [H5.0 bit Driver](#) (2)
 - [Soldering Iron](#) (1)
-

Step 1 — Disassembly



- Use a T-10 Torx bit screwdriver to take out the 4 screws shown.

Step 2



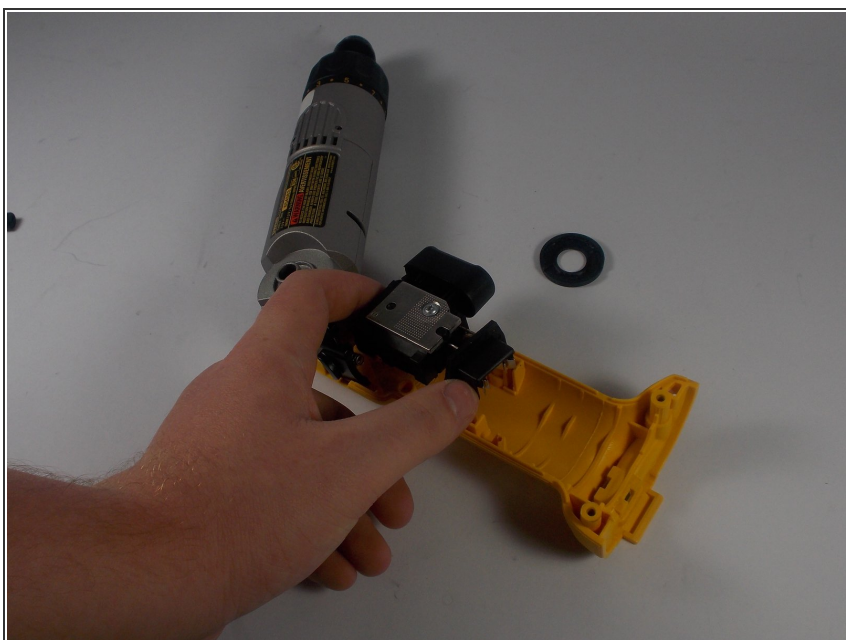
- Use 2 H-5.0 bit drivers to take out the main bolt and head.
- Note: there will be blue locktite on the tread

Step 3



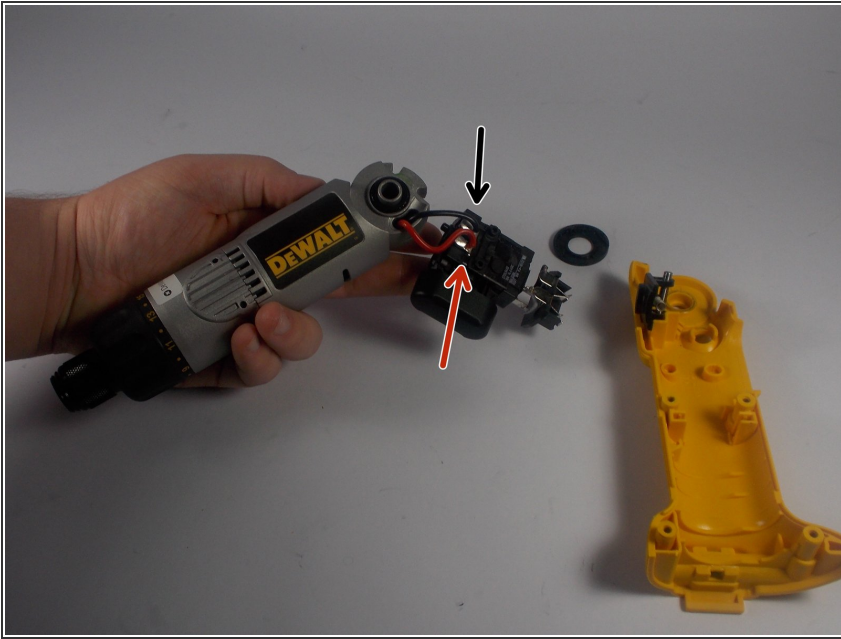
- Pull apart 2 halves of the handle.

Step 4 — Trigger



- Lift broken trigger assembly out of its slot

Step 5



- Carefully detach the solder points where the trigger assembly is attached to the motor assembly.

To reassemble your device, follow these instructions in reverse order.