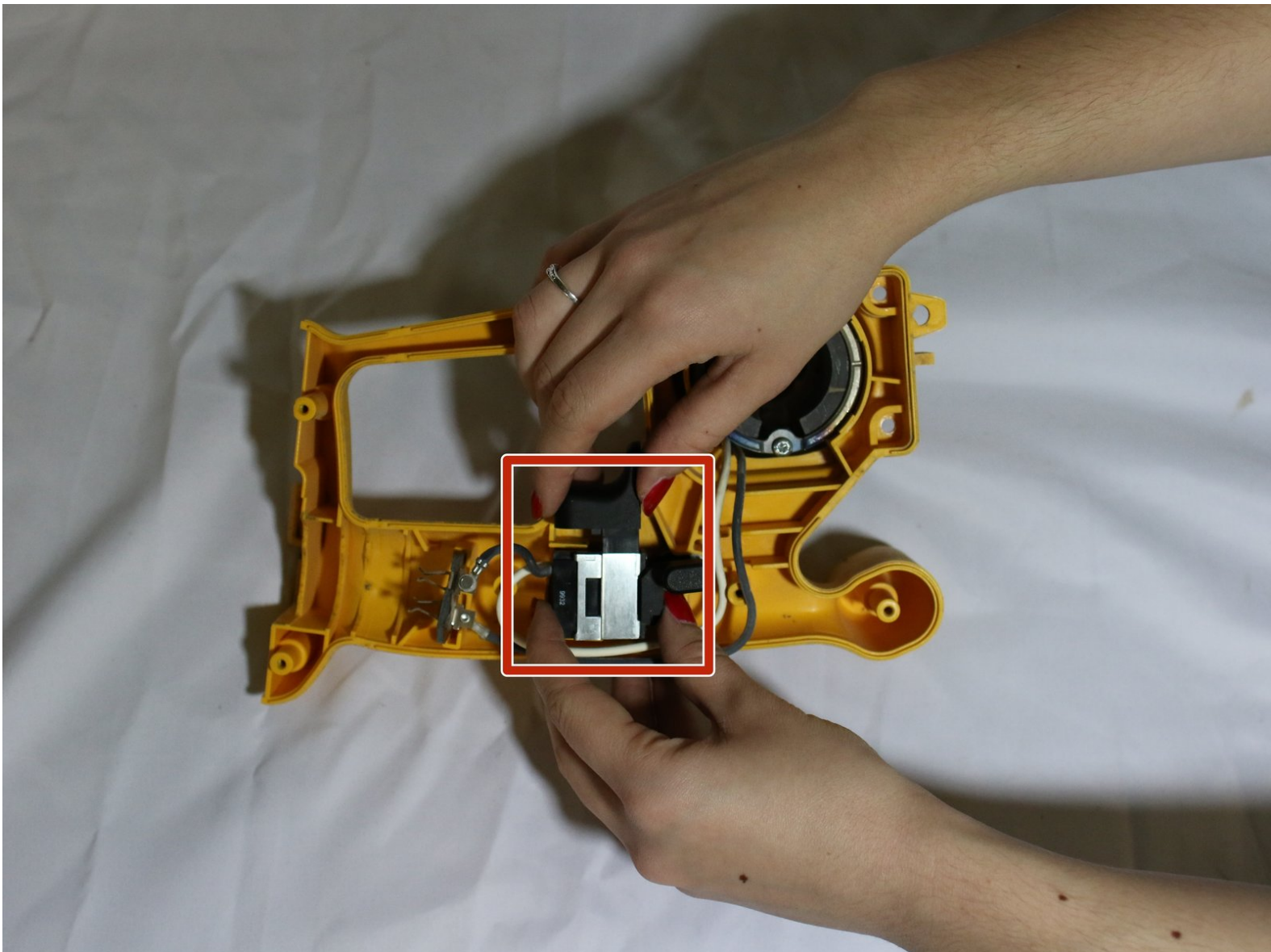




# DeWalt DW936 Trigger Replacement

Need to replace the trigger on my saw.

Written By: Scott Weinhardt



---

## INTRODUCTION

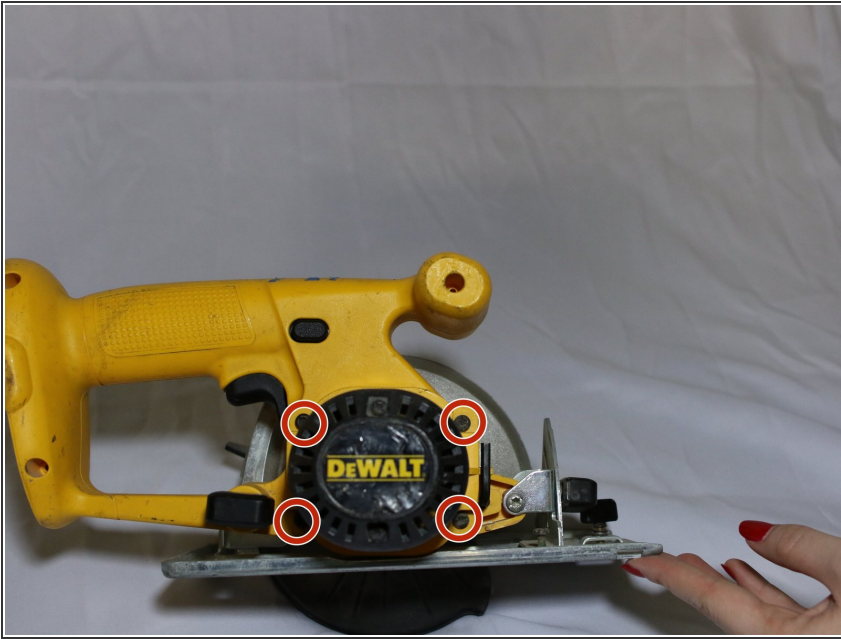
This guide will show you how to take out the trigger on the saw.



### TOOLS:

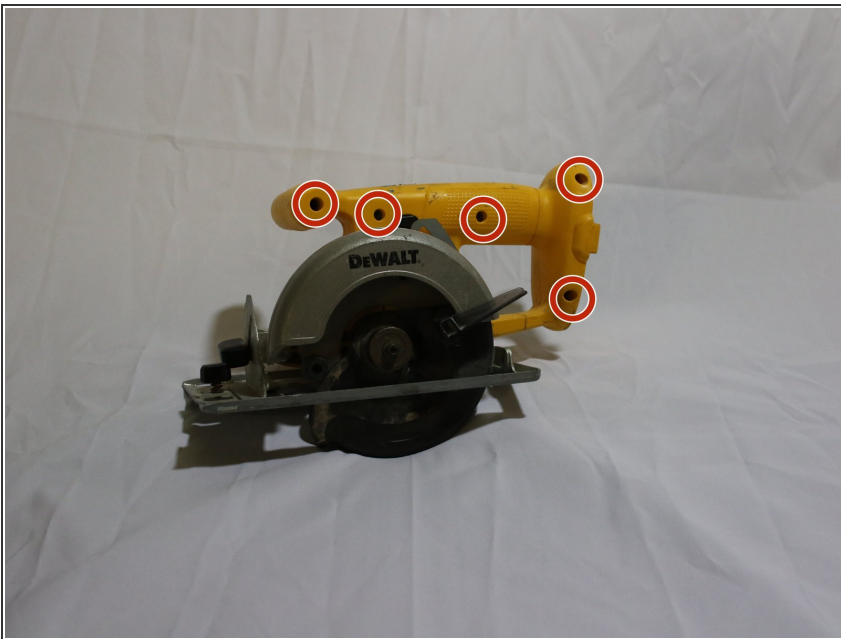
- [T20 Torx Screwdriver](#) (1)
  - [Tweezers](#) (1)
-

## Step 1 — Plastic Cover



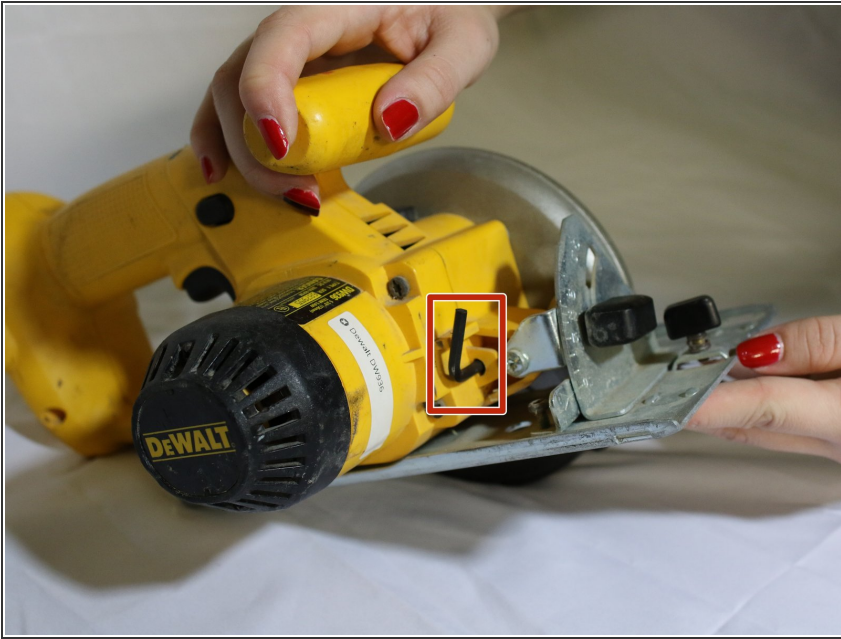
- Use a T-20 hexhead screw to unscrew 4 hexagonal screws surrounding the base of the black air filter. The screws are on the yellow portion.

## Step 2



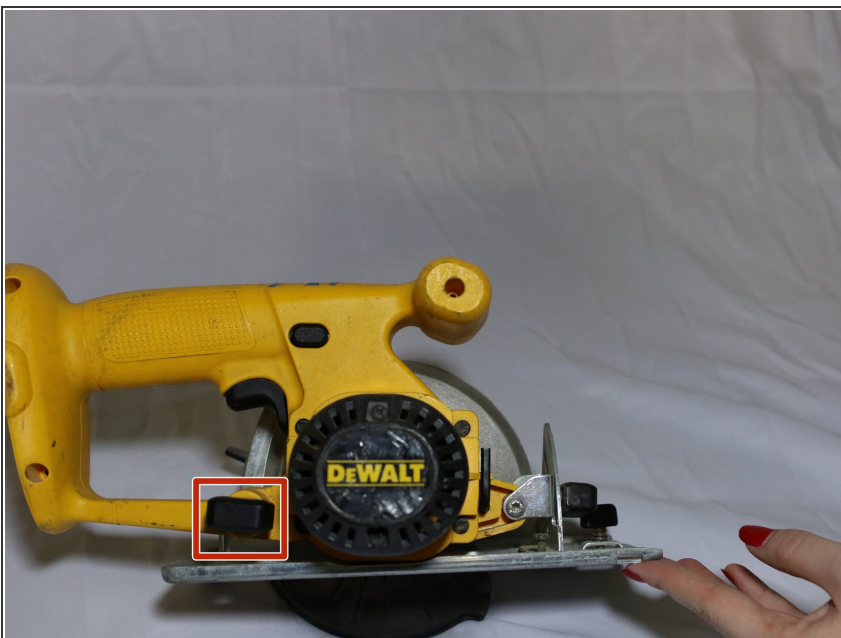
- Use a T-15 hexhead screw to unscrew 5 hexagonal screws. These screws are located on the opposite side of the saw from previous step.

## Step 3



- Remove Allen Key.

## Step 4



- Unscrew the black plastic knob underneath the trigger.



## Step 5



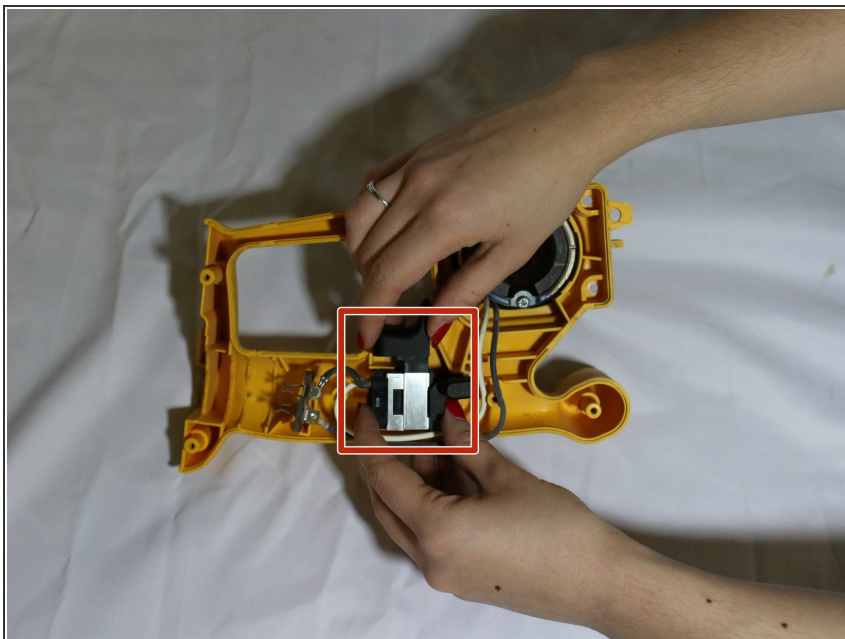
- Grab hold of the black air filter portion and pull off.

## Step 6



- This is what the inside of the saw looks like.

## Step 7 — Trigger



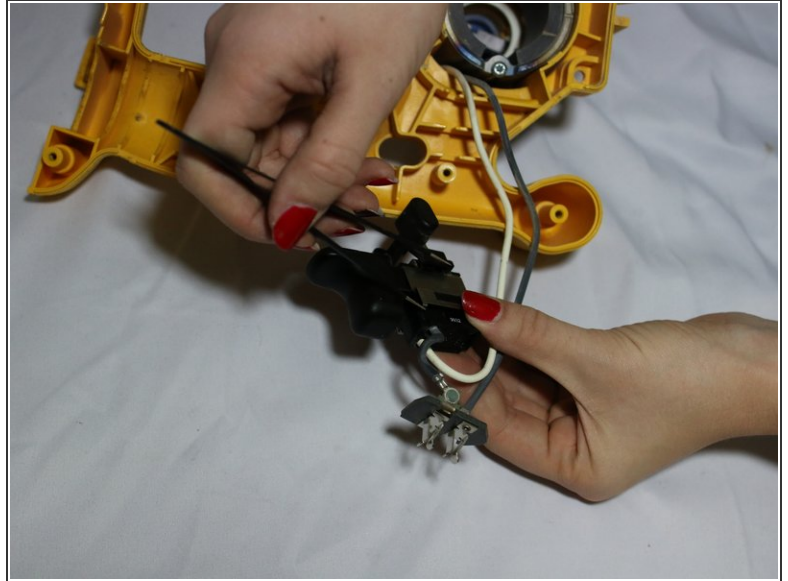
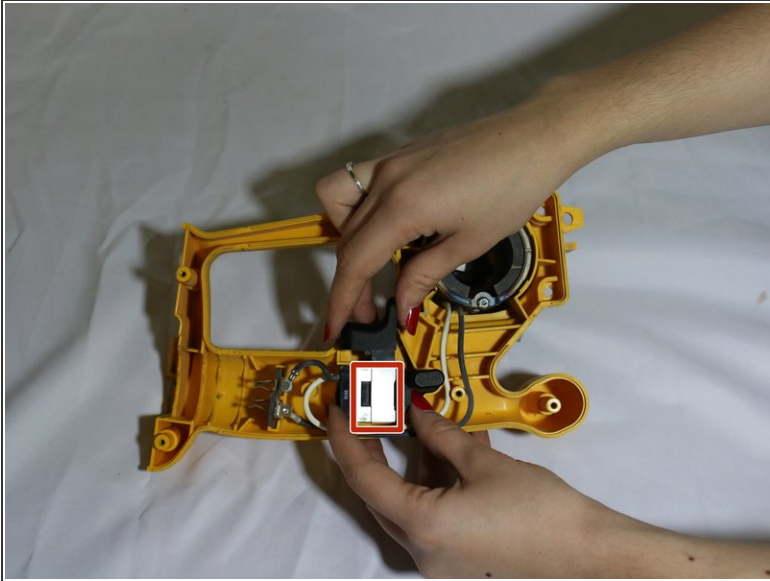
- The trigger has black and white wires coming off of it. Grip the trigger with both hands, one on the plastic trigger part and the other on the plastic by the silver metal piece.
- Pull up.

## Step 8



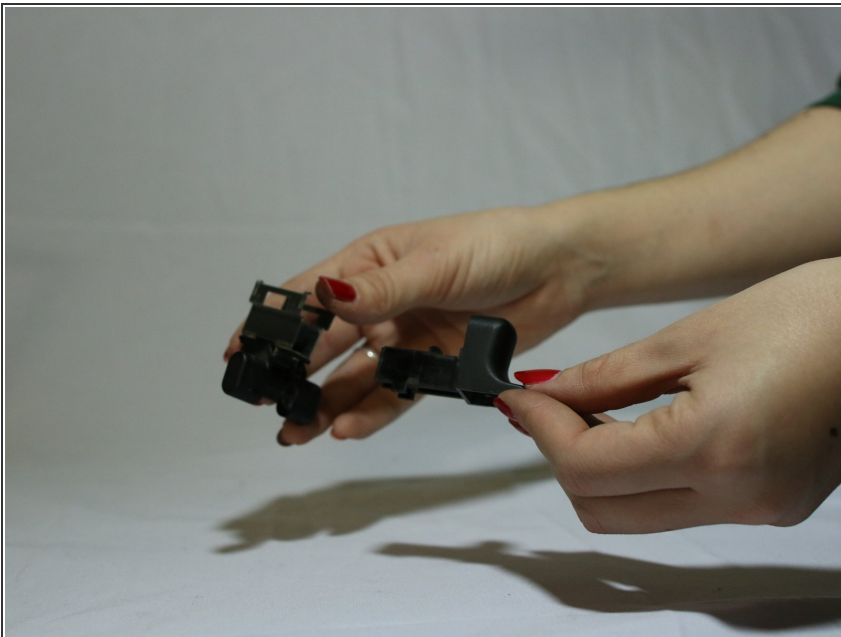
- The trigger should be able to sit freely.

## Step 9



- Lift off the silver metal piece using tweezers.
- Lift off each hook. (4 corners)

## Step 10



- Pull plastic trigger out of the black plastic casing.

To reassemble your device, follow these instructions in reverse order.