



# DeWalt DW938 Brush Head Replacement

This guide will demonstrate how to replace the brush leads for the DeWalt DW938

Written By: Christopher Chin



---

# INTRODUCTION

This guide will show how to remove the brush leads on the DeWalt DW938.



## TOOLS:

- [Large Needle Nose Pliers](#) (1)
  - [Metal Spudger](#) (1)
-

## Step 1 — Clam Shell

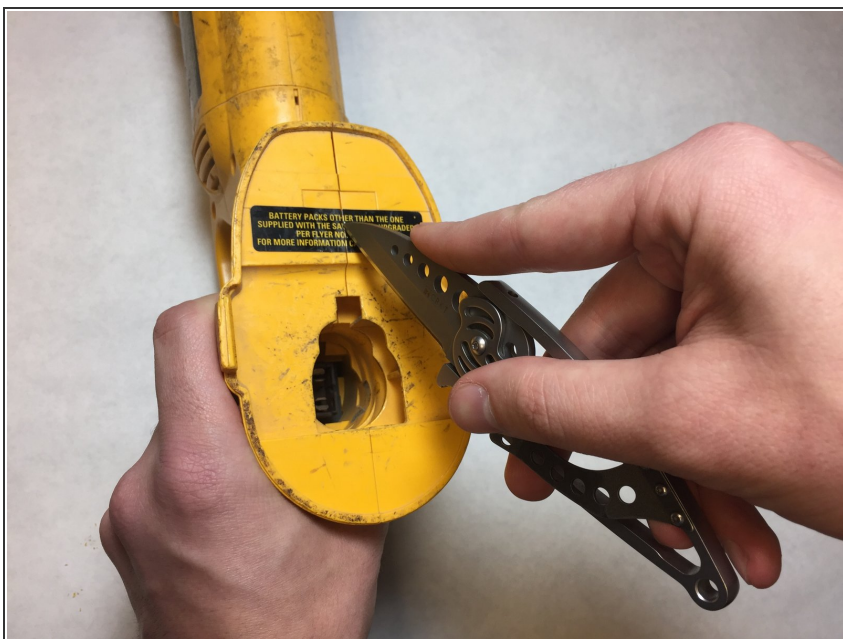


- Use a torque bit screw driver to remove the T10 18.3 mm screw on the handle.
- Use a torque bit screw driver to remove 6 T10 21.5 mm screws on the handle.

⚠ Insure power source is removed from tool.

⚠ Insure blade is removed from tool.

## Step 2



- Carefully cut the safety sticker with a blade along the seam.

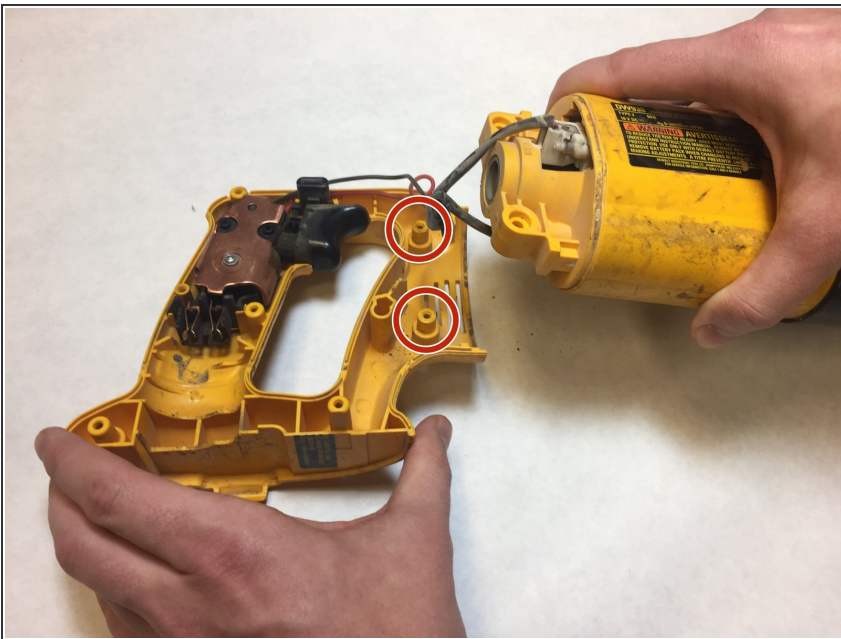


### Step 3



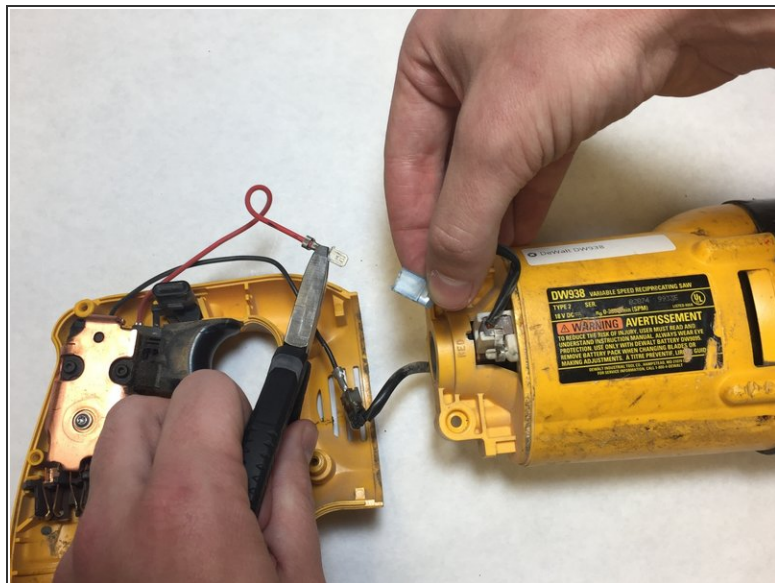
- Remove the Clam Shell from the handle unit.

### Step 4 — Switch VSR



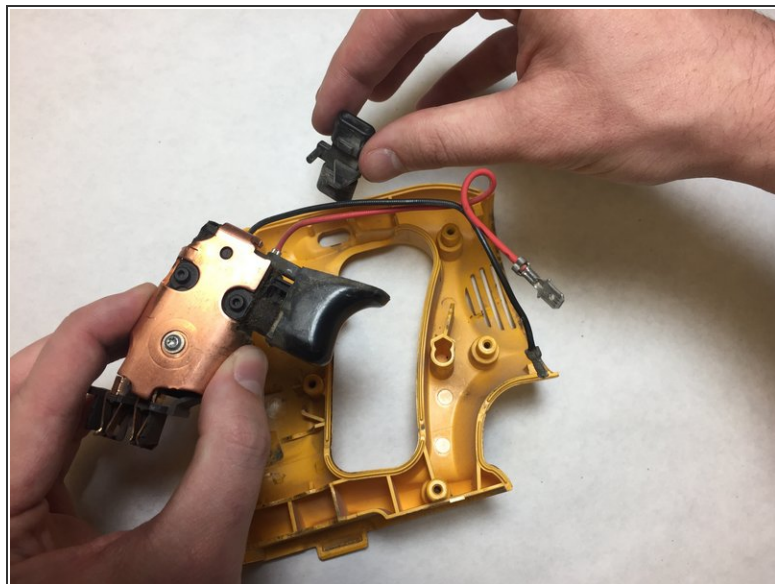
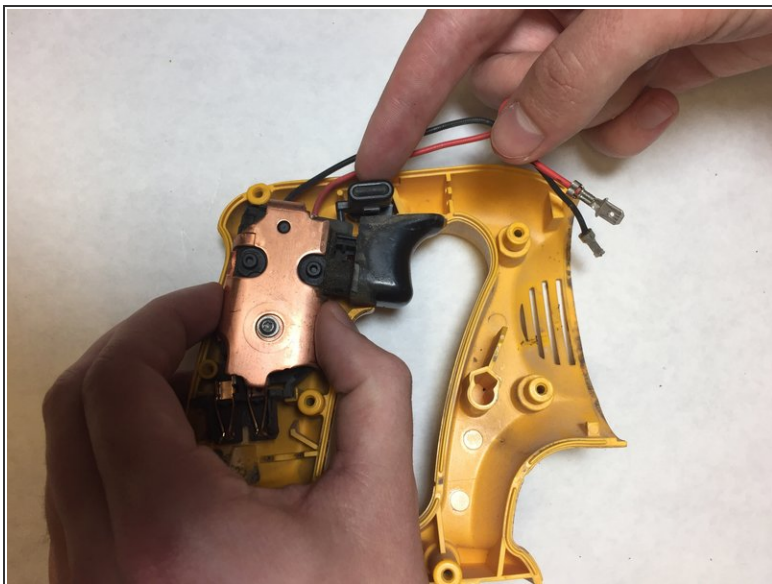
- Lift the mechanical device off the pins of the clam shell.

## Step 5



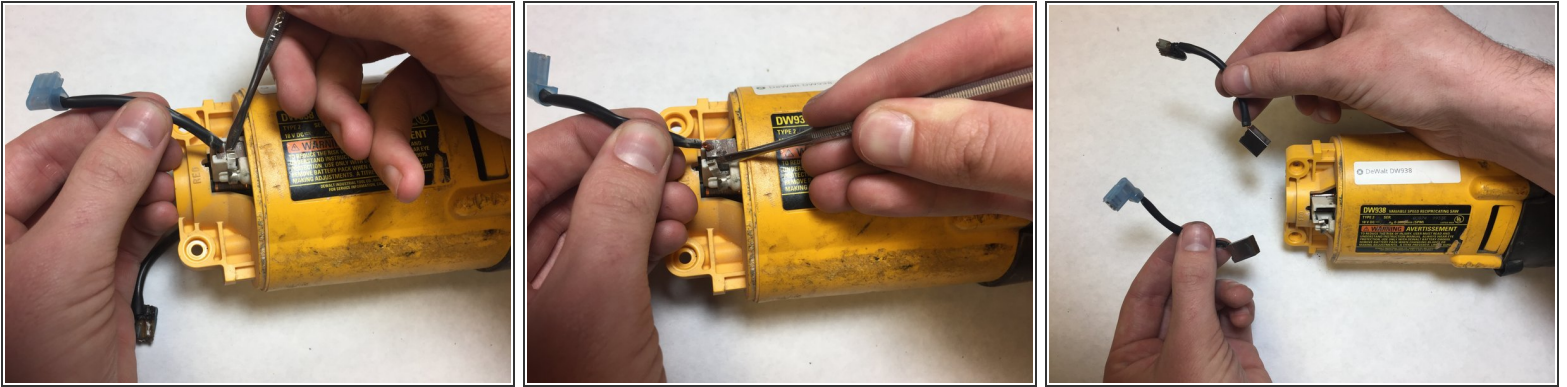
- Remove the red and black trigger wires from the brush leads with the pliers.

## Step 6



- Remove the VSR trigger and the lock button.

## Step 7 — Brush Head



- Push in locking clips to remove the brush head.
- Repeat for the other brush.

To reassemble your device, follow these instructions in reverse order.