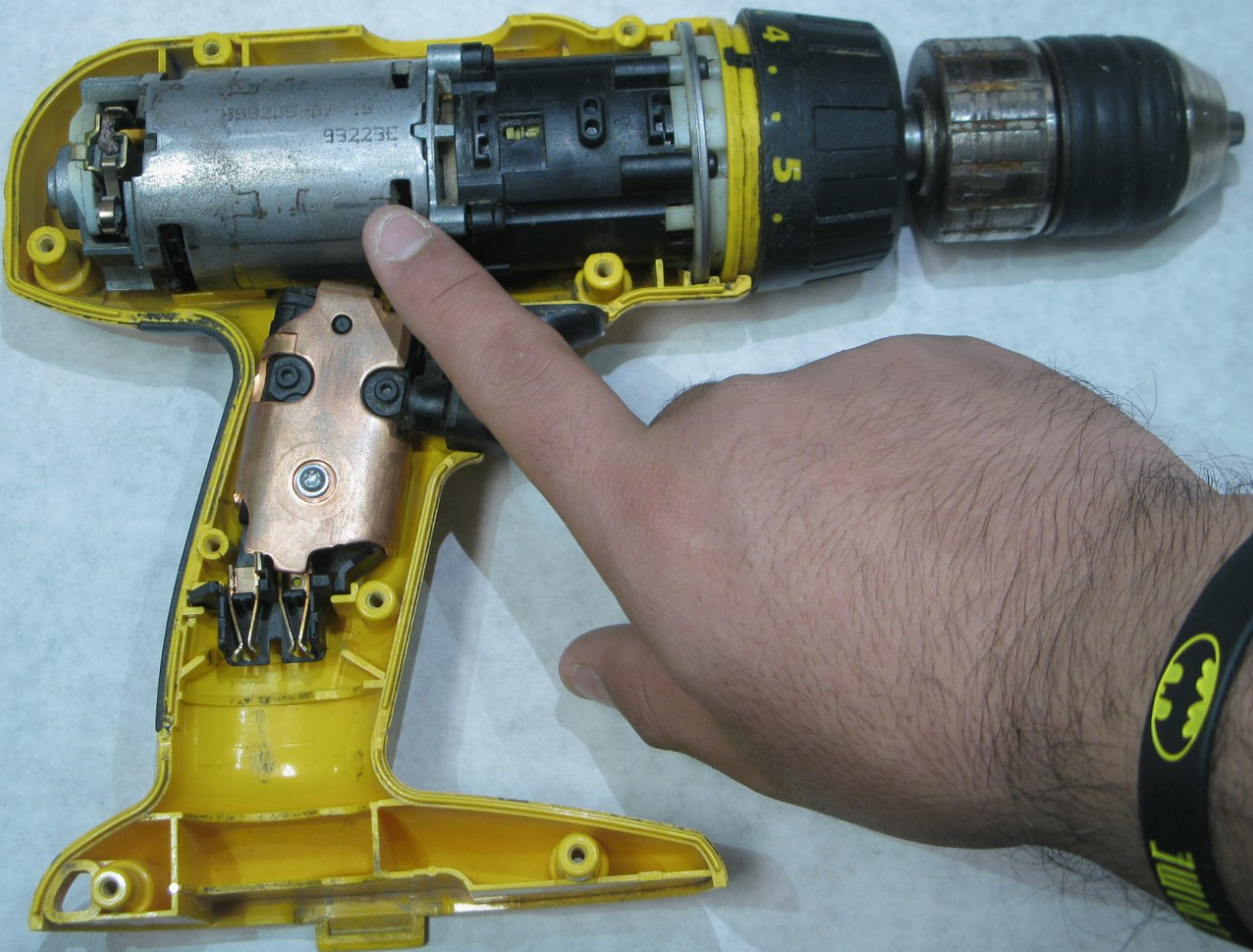




DeWalt DW997 Motor Replacement

This guide will help you replace the motor to your Dewalt DW997 device.

Written By: Kevin



INTRODUCTION

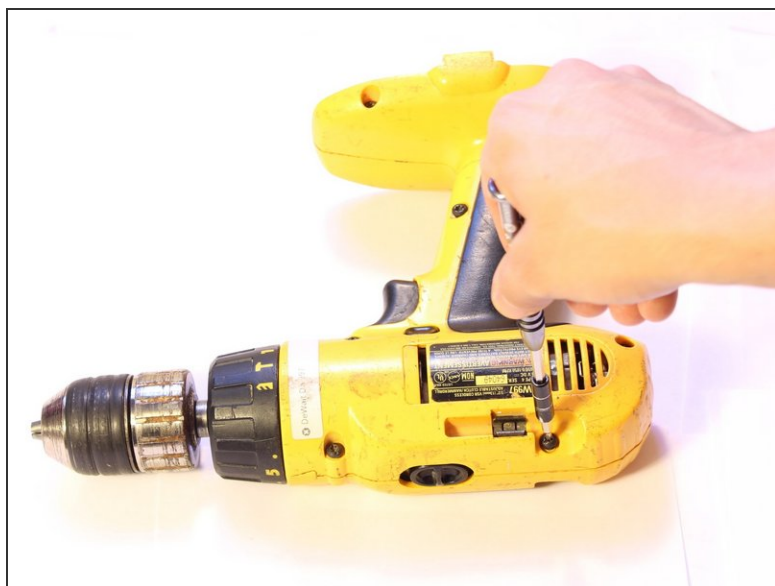
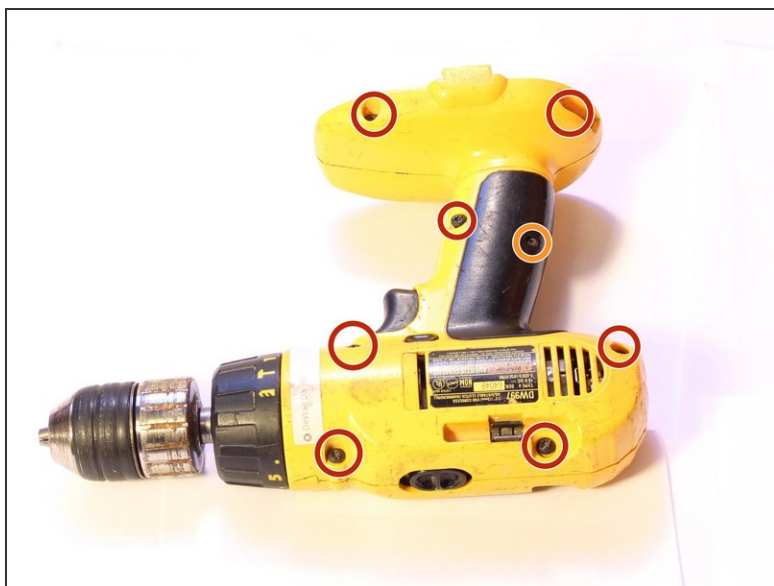
If the drill is on but not spinning, then the motor should be replaced.



TOOLS:

- [T10 Torx Security Bit Screwdriver](#) (1)
 - [Tweezers](#) (1)
 - [T15 Torx Screwdriver](#) (1)
-

Step 1 — Speed Switch



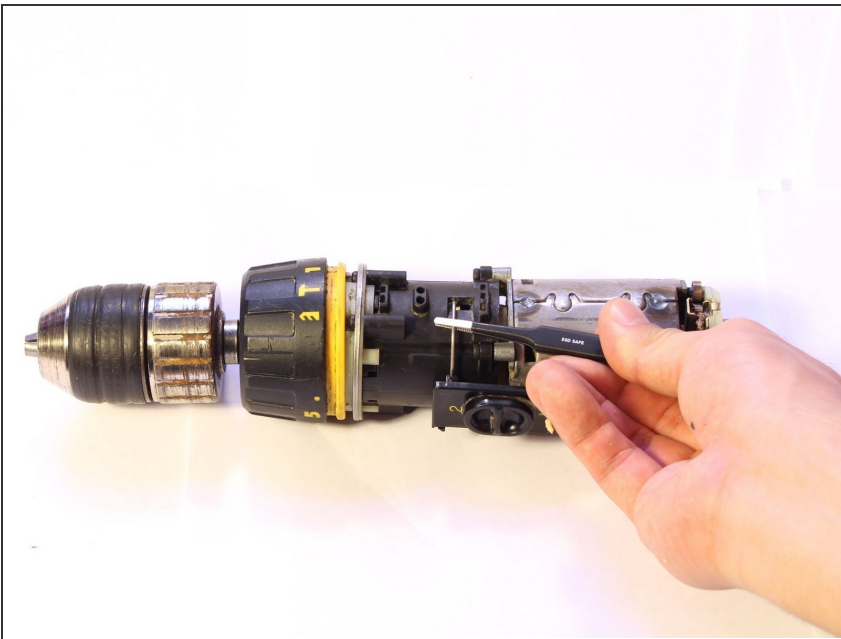
- Remove seven 21 mm Torx T15 screws.
- Remove one 18 mm Torx T10 screw.
- After removing all screws, lift up the top yellow cover.
- ⓘ The yellow cover should easily lift up, if not, check for unscrewed screws.
- ⚠ Do not pry the two yellow covers apart, they can crack.

Step 2



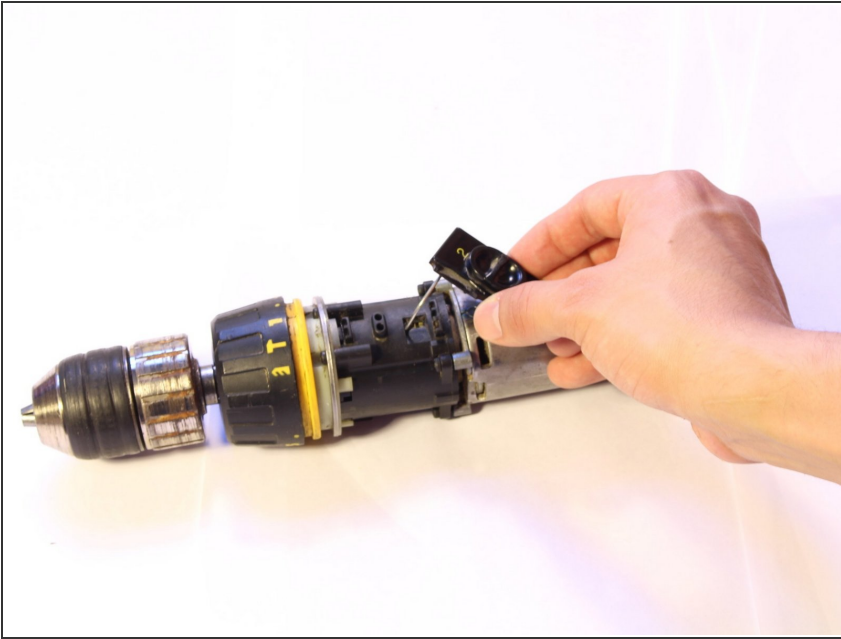
- Lift the components out of the casing. These include: motor, gear assembly, trigger assembly and chuck.

Step 3



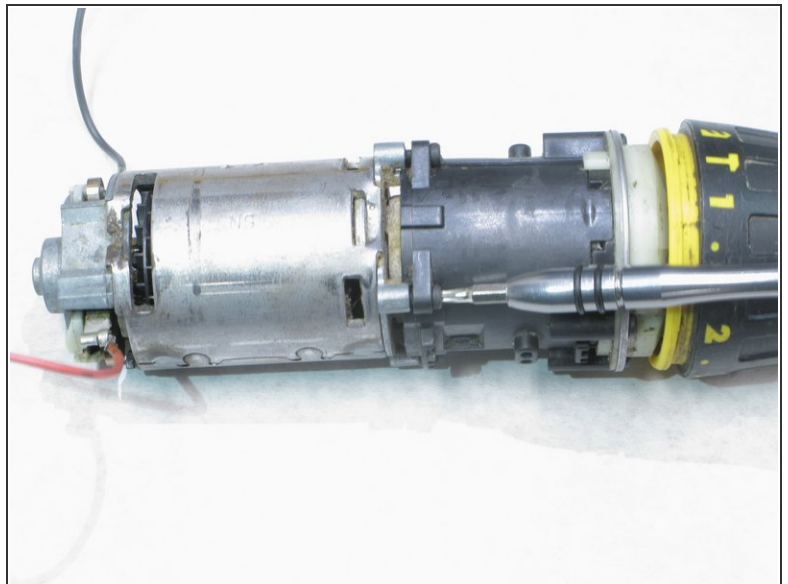
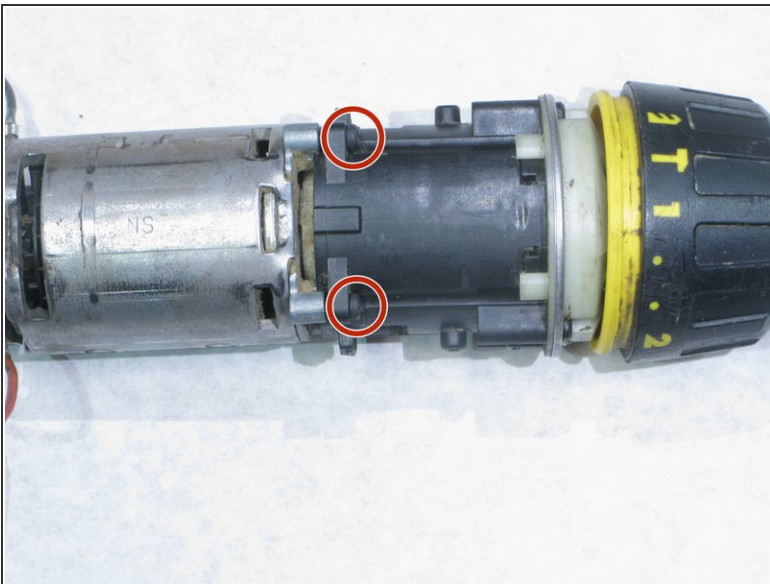
- Using the tweezers, grab the metal leg on either side of the switch and lift it outwards from the case.

Step 4



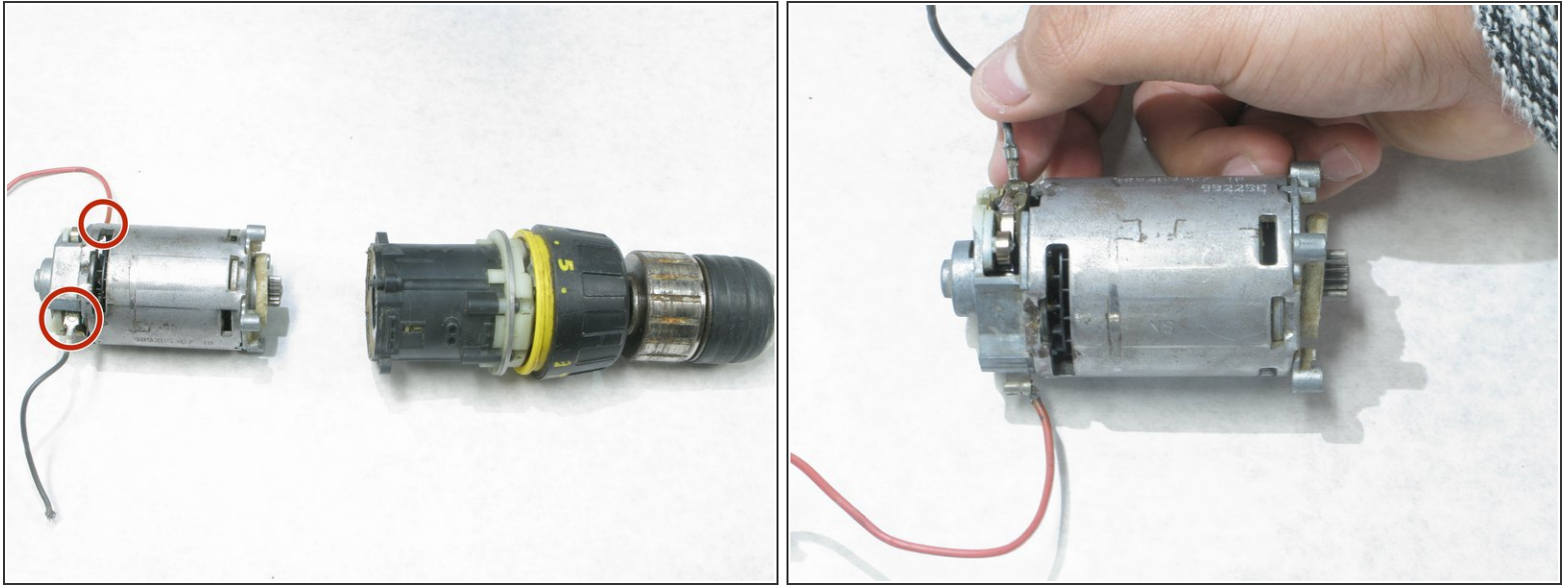
- Remove the other leg manually, it should easily come out.

Step 5 — Motor



- Use a Torx T10 screw bit to remove the four 11mm screws around the motor.

Step 6



- Pull off the two wires that connect the motor to the trigger.

⚠ Be careful while pulling the wires as they can tear.

To reassemble your device, follow these instructions in reverse order.