



DeWalt DW997 Speed Switch Replacement

If your drill is not changing speed when the speed switch is moved to 1 or 2, there may be a problem with it. This guide will help you replace the speed switch

Written By: Juan Endara



INTRODUCTION

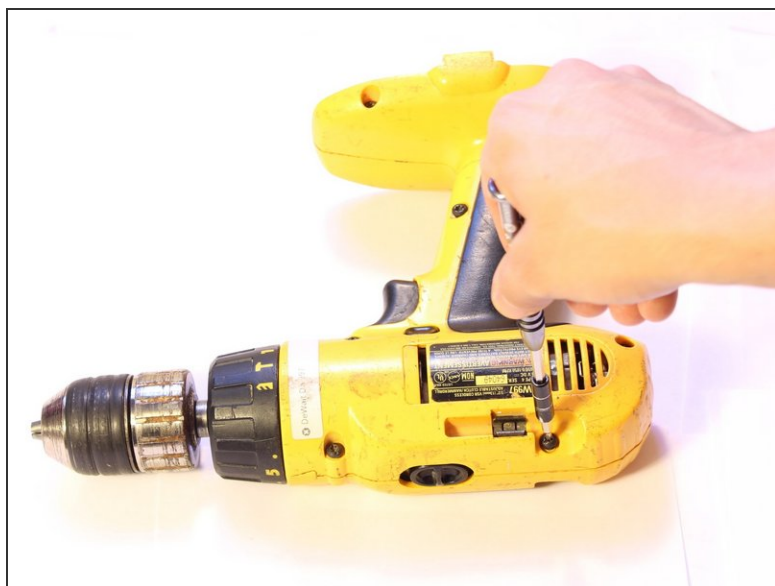
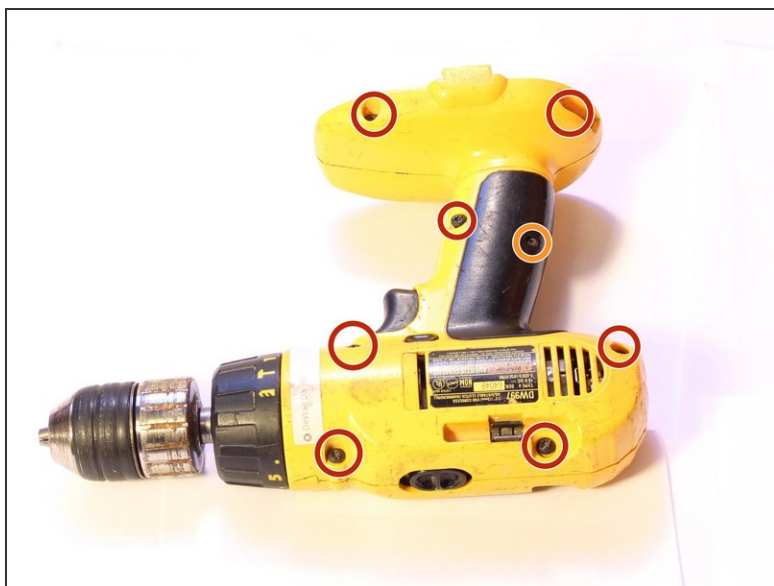
This guide will show you how to disassemble your drill in order to replace the speed switch.



TOOLS:

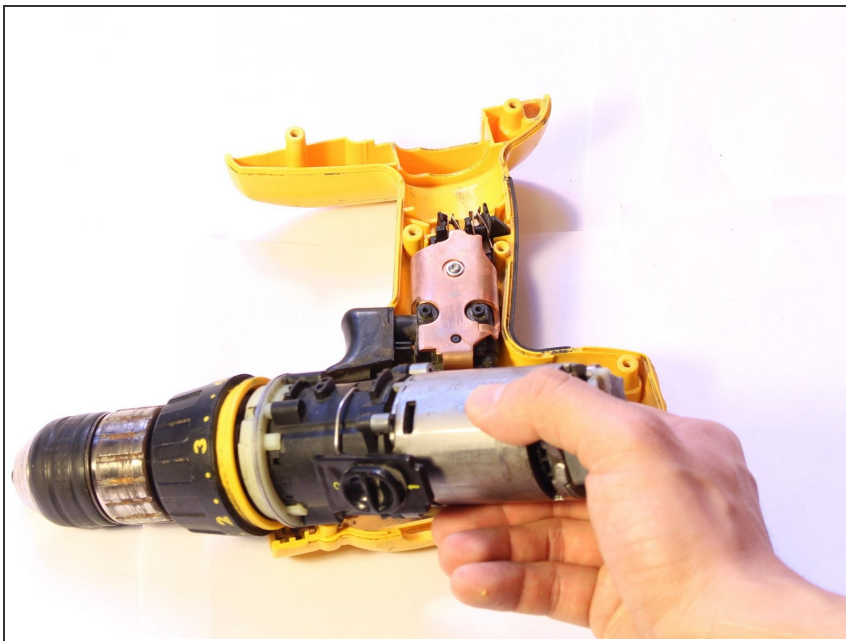
- [T10 Torx Security Bit Screwdriver](#) (1)
 - [Tweezers](#) (1)
 - [T15 Torx Screwdriver](#) (1)
-

Step 1 — Speed Switch



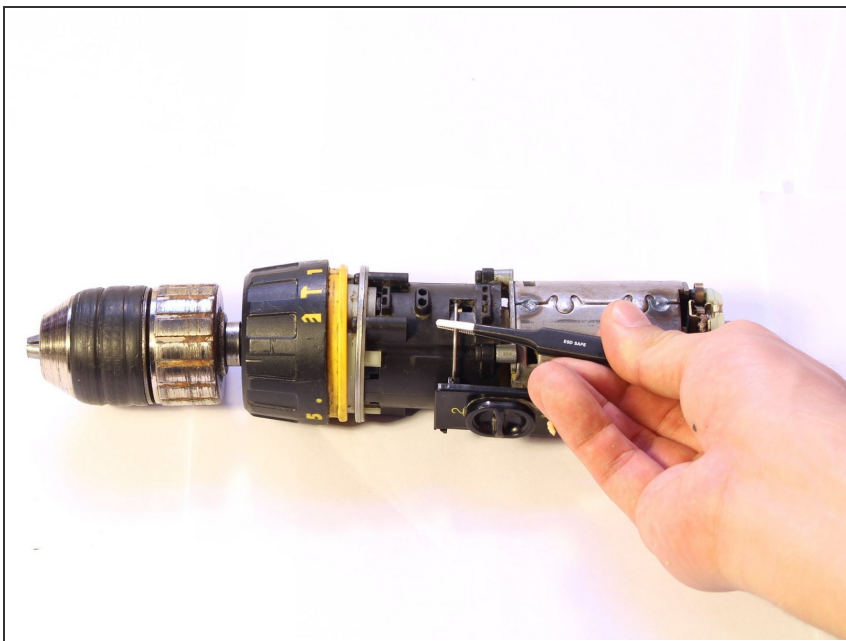
- Remove seven 21 mm Torx T15 screws.
- Remove one 18 mm Torx T10 screw.
- After removing all screws, lift up the top yellow cover.
- ⓘ The yellow cover should easily lift up, if not, check for unscrewed screws.
- ⚠ Do not pry the two yellow covers apart, they can crack.

Step 2



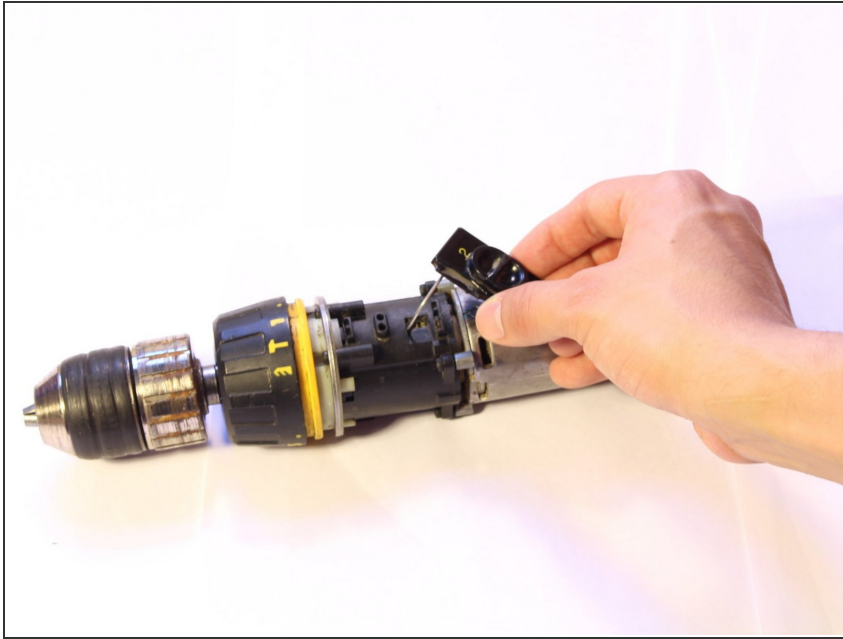
- Lift the components out of the casing. These include: motor, gear assembly, trigger assembly and chuck.

Step 3



- Using the tweezers, grab the metal leg on either side of the switch and lift it outwards from the case.

Step 4



- Remove the other leg manually, it should easily come out.

To reassemble your device, follow these instructions in reverse order.