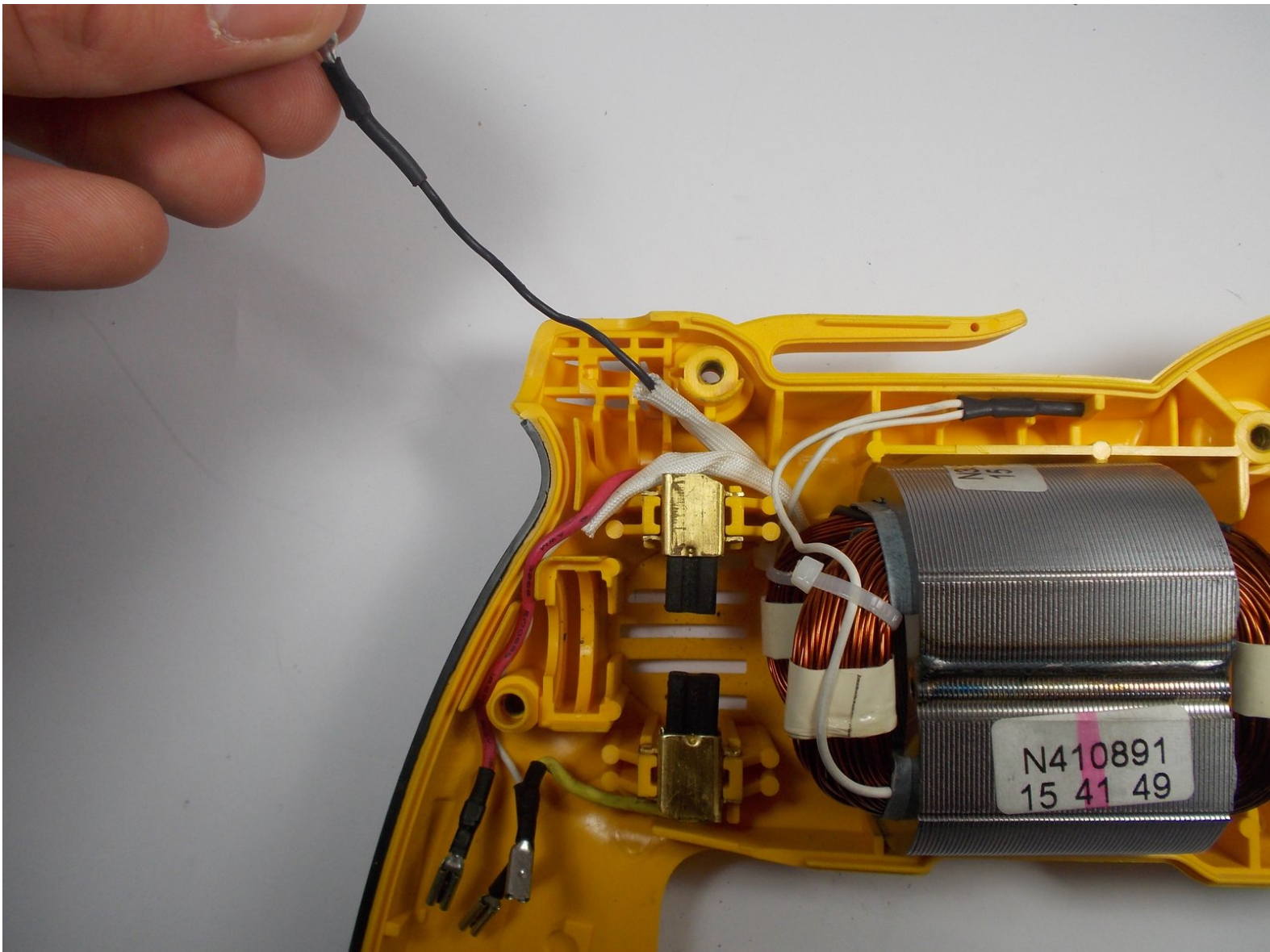




# DeWalt DWD112 Field Replacement

Replace a broken field in your DeWalt DWD112 drill.

Written By: Samantha McSweeney



---

## INTRODUCTION

The wound wires of a field coil can fail, causing a drill to function poorly or not at all. Use this guide to replace a broken field in the DeWalt DWD112.



### TOOLS:

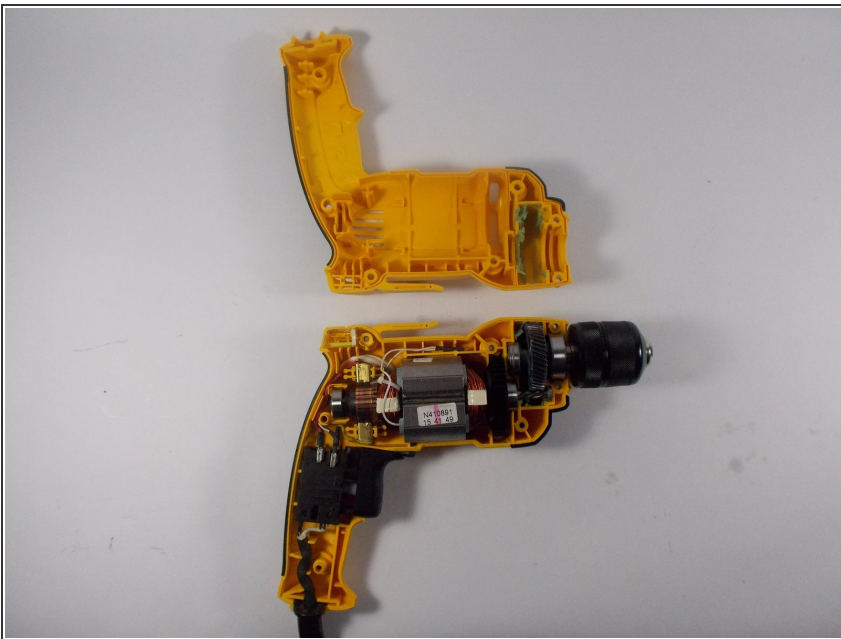
- [T20 Torx Screwdriver](#) (1)
-

## Step 1 — Power Cord



- Remove seven TR20 Torx Security screws from the side of the drill.

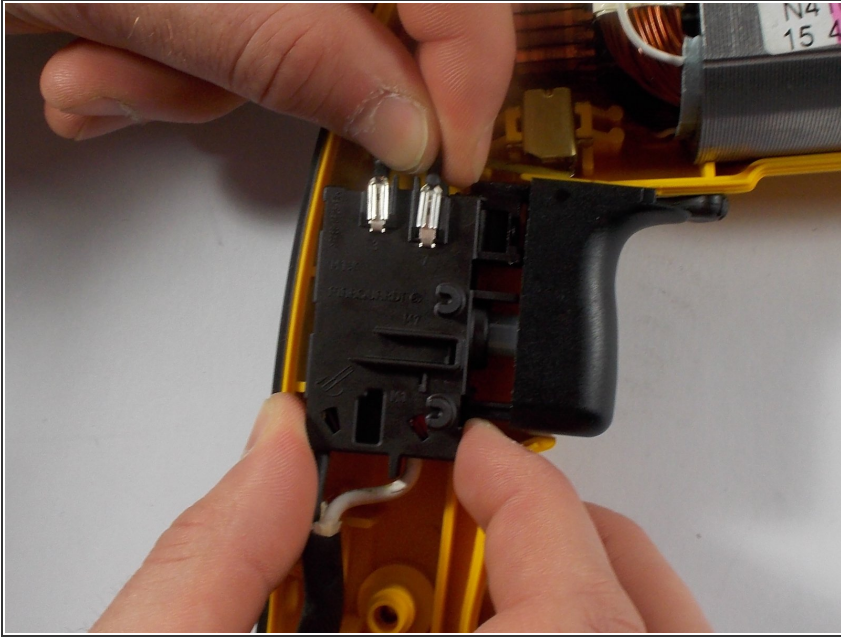
## Step 2



- Remove the top cover to reveal the inside of the drill.
- Set the top cover of the drill aside.

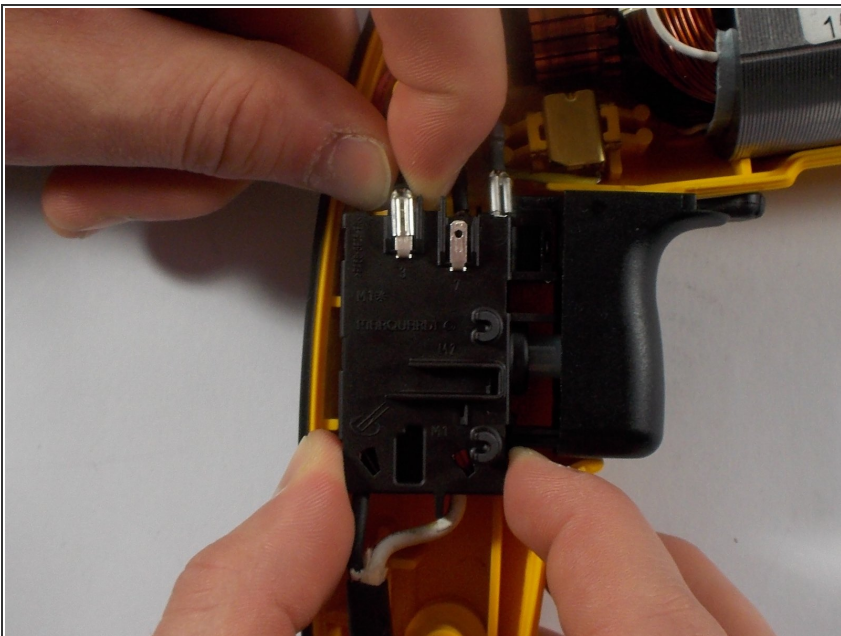


### Step 3



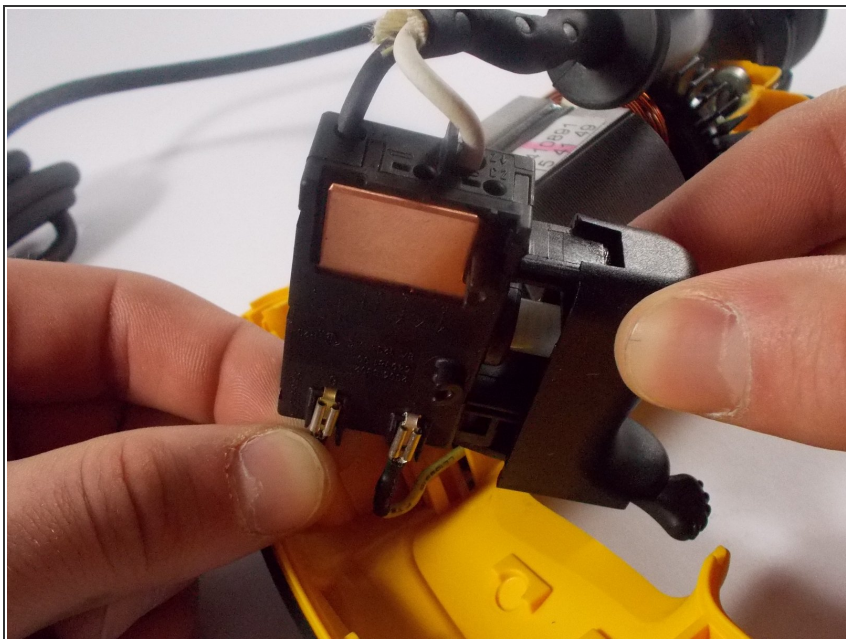
- ❗ The power cord and the trigger act as a single part and must be replaced together.
- Using one hand grab the trigger box and with the other grab the end of the wire connecting to the trigger box and disconnect the wire.

### Step 4



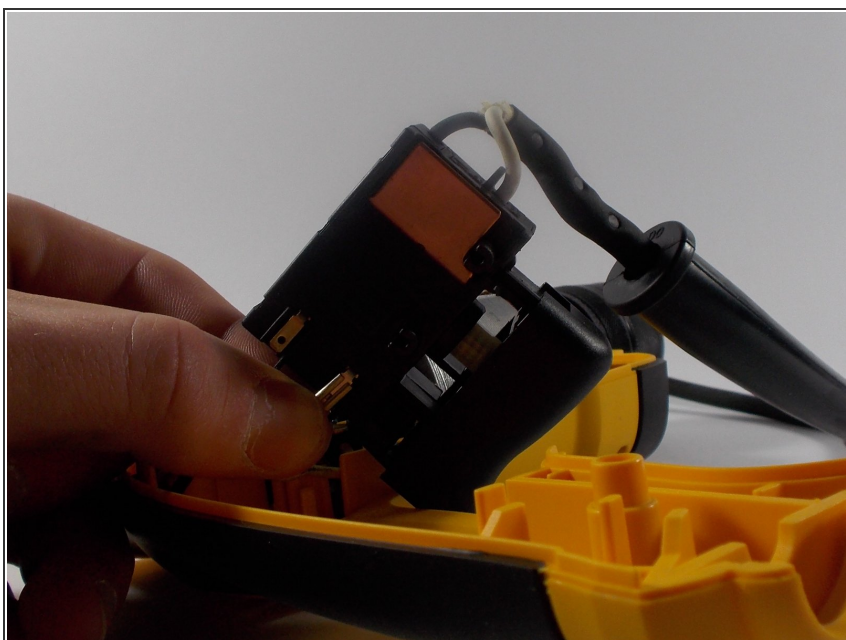
- Disconnect the second connected wire from the top of the trigger box.

## Step 5



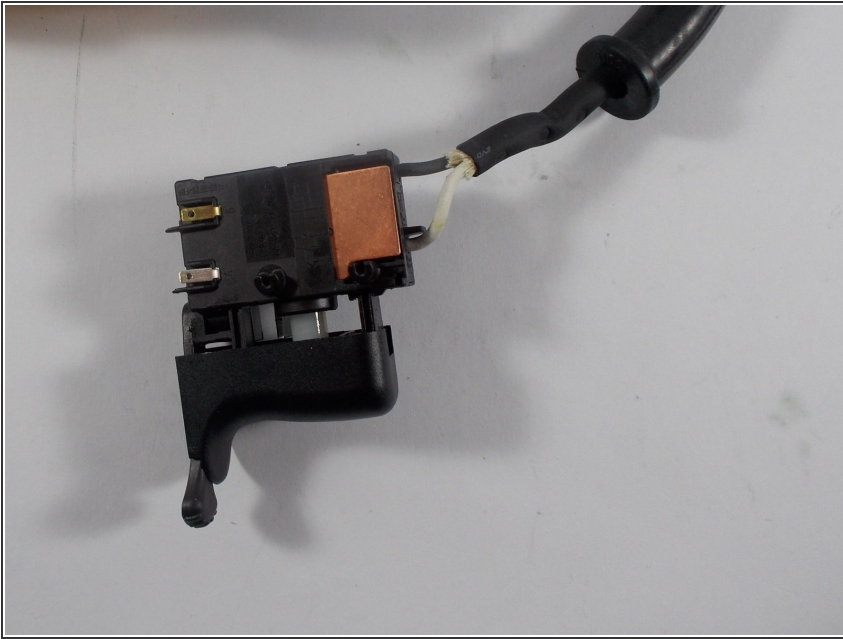
- Lift the trigger box up to reveal the bottom side.
- Disconnect the first connected wire from the bottom of the trigger box.

## Step 6



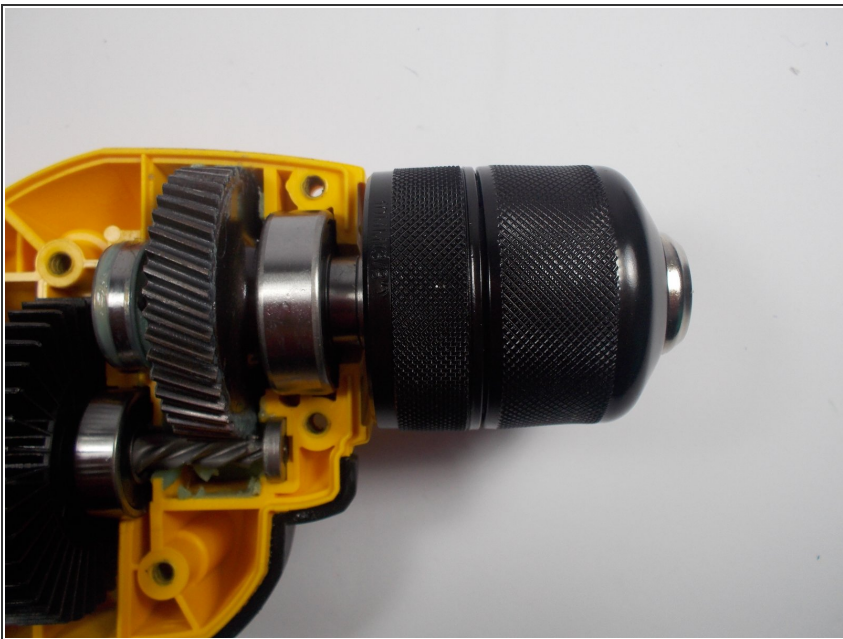
- Disconnect the last wire from the trigger box using the same method from the previous step.

## Step 7



- After all four wires are disconnected, the trigger and power cord are separated from the drill.
- ⓘ The power cord and trigger can be set aside if further disassembly is required.

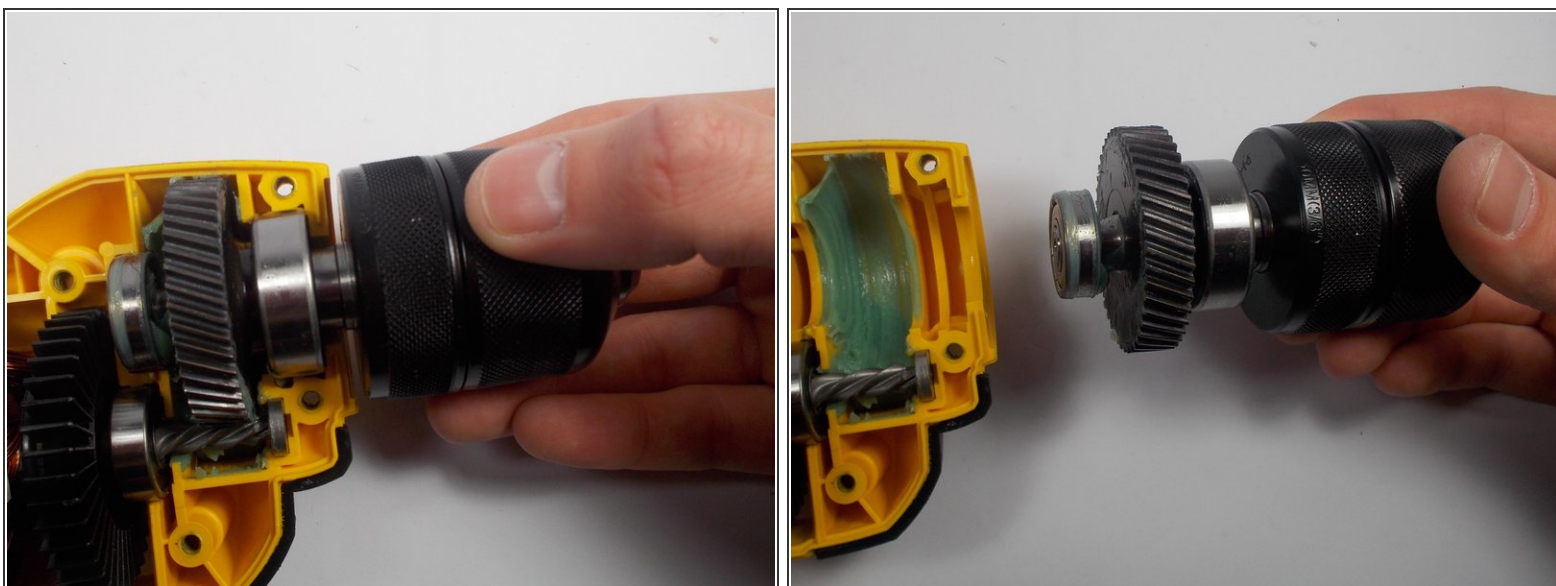
## Step 8 — Armature



- Take note of the keyless chuck and the meshing of the gears.

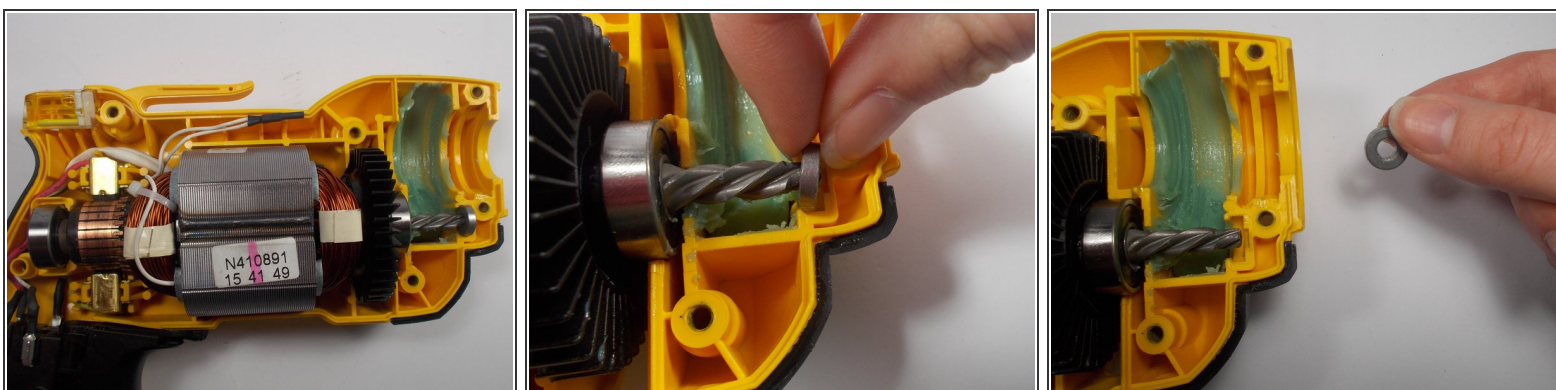


## Step 9



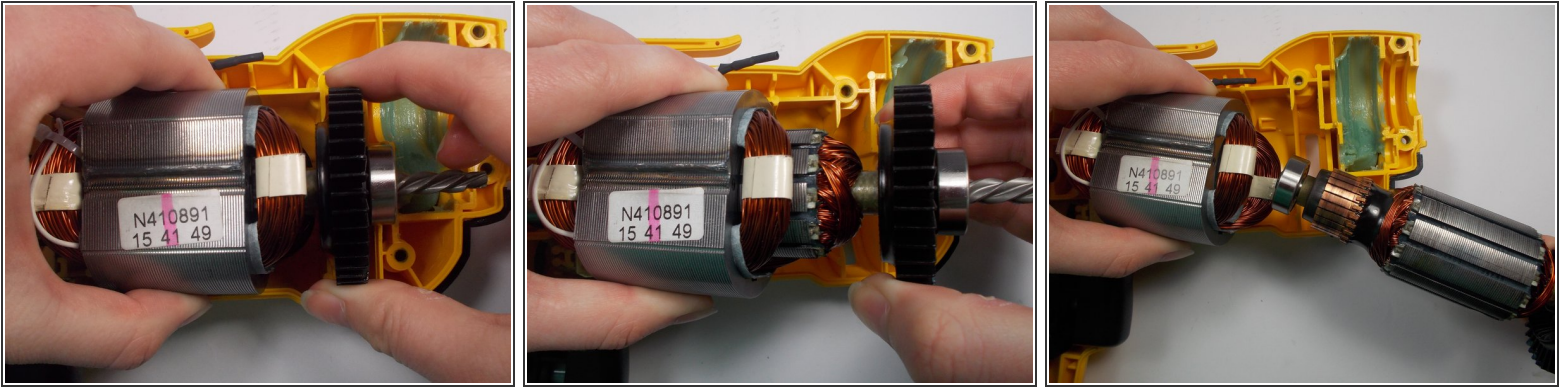
- Grab the metal chuck by the rotating spindle as if you are to tighten in a drill bit.
- Lift the metal chuck out of its resting place and set aside.

## Step 10



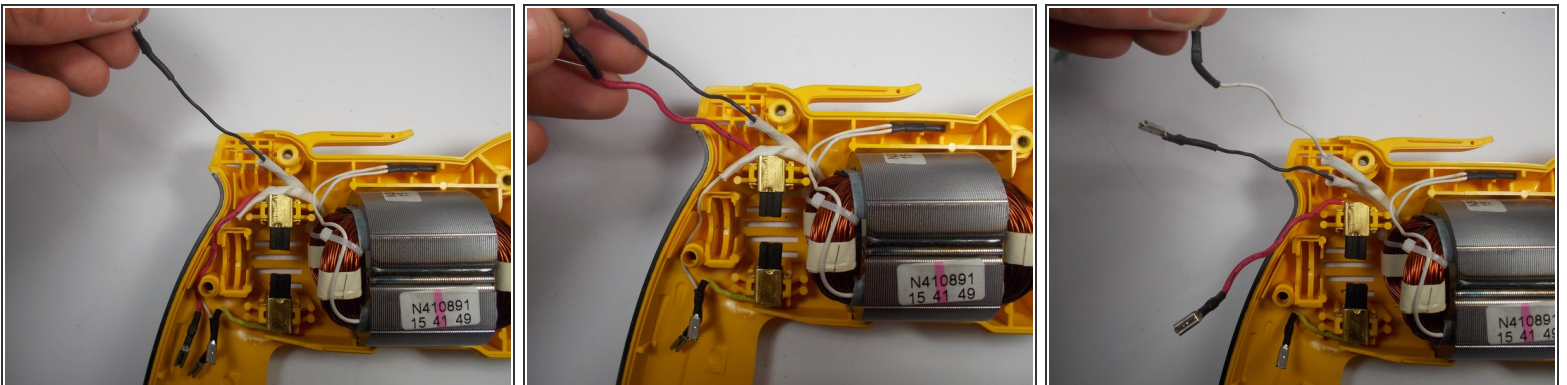
- With your left hand, grab hold of the field, which is the large metal block with coils looped around the inside.
- Use your other hand to take the bearing out from the end of the gear connected to the armature.

## Step 11



- Lift the field up once more with one hand and grab the cooling fan with the other hand and gently slide the armature out of the field.
- ⓘ The brushes will now be disconnected from the armature, meaning no current can flow from the power cord to the motor.

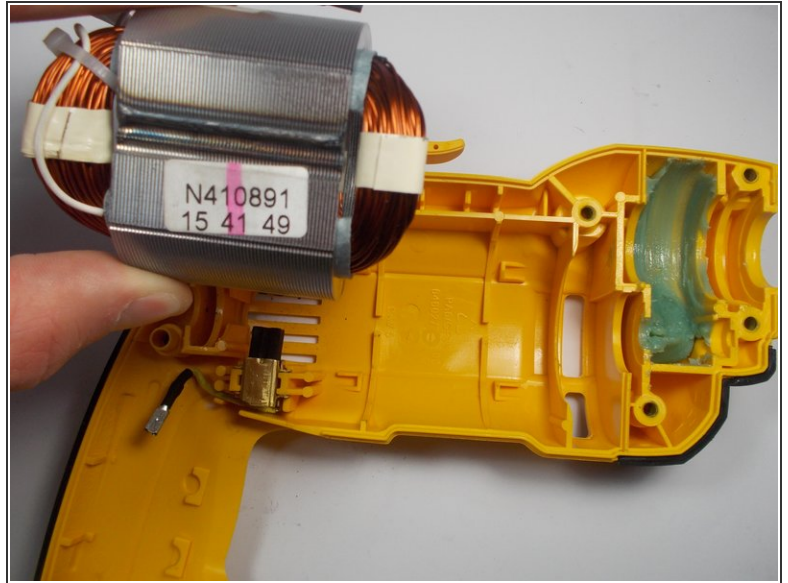
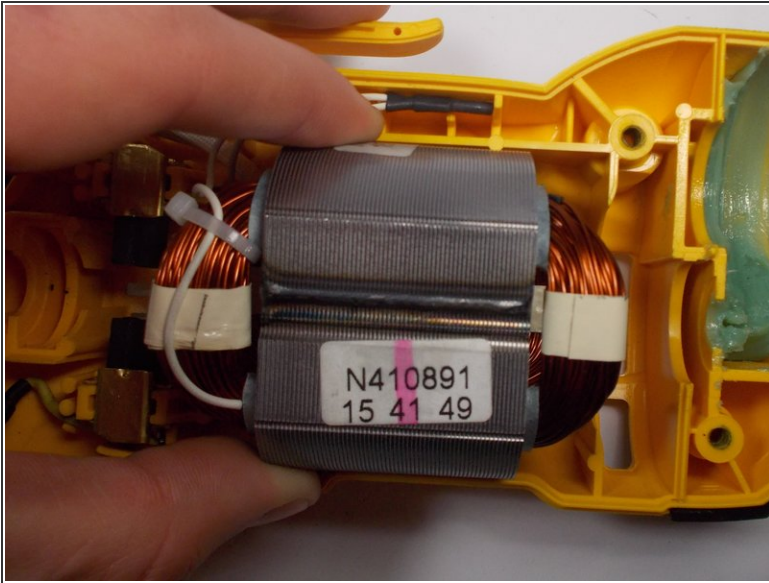
## Step 12 — Field



- Move the black wire clear from any obstruction.
- Repeat this step for the white wire and the red wire.



## Step 13



- ⓘ The field is disconnected from all other parts.
- Grab the field and gently lift it out of the case.

To reassemble your device, follow these instructions in reverse order.