



# DeWalt DWD112 Power Cord Replacement

Replace a broken cord to bring your DeWalt DWD112 drill back to full power.

Written By: Samantha McSweeney



---

## INTRODUCTION

If your drill has no power, the wires in the power cord may have been frayed or become severed. This guide will help you replace the power cord in your DeWalt DWD112.

---



### TOOLS:

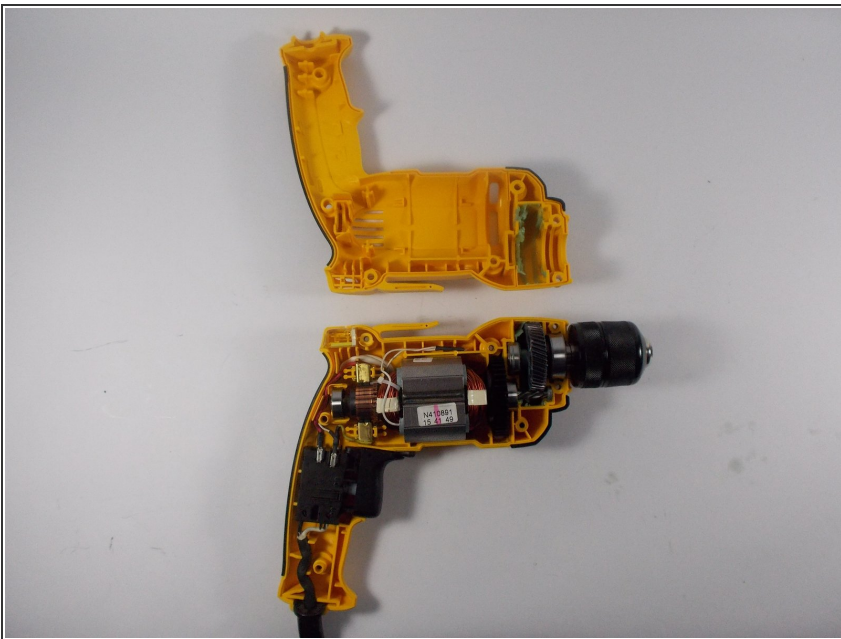
- [T20 Torx Screwdriver](#) (1)
-

## Step 1 — Power Cord



- Remove seven TR20 Torx Security screws from the side of the drill.

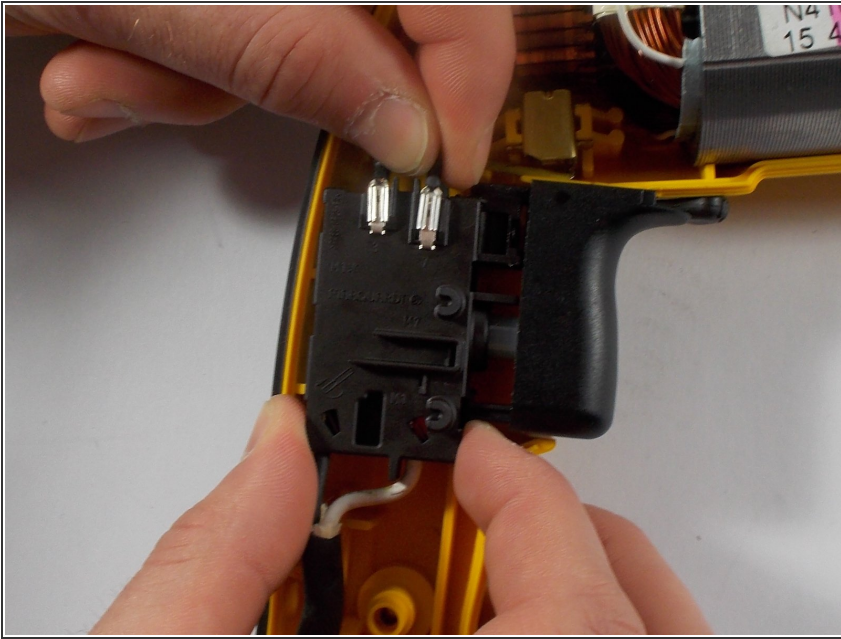
## Step 2



- Remove the top cover to reveal the inside of the drill.
- Set the top cover of the drill aside.

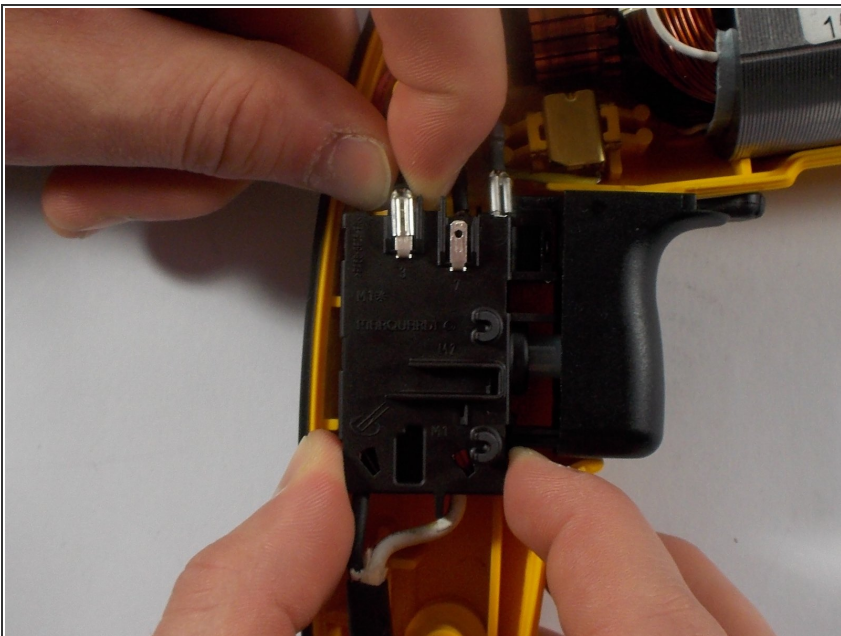


### Step 3



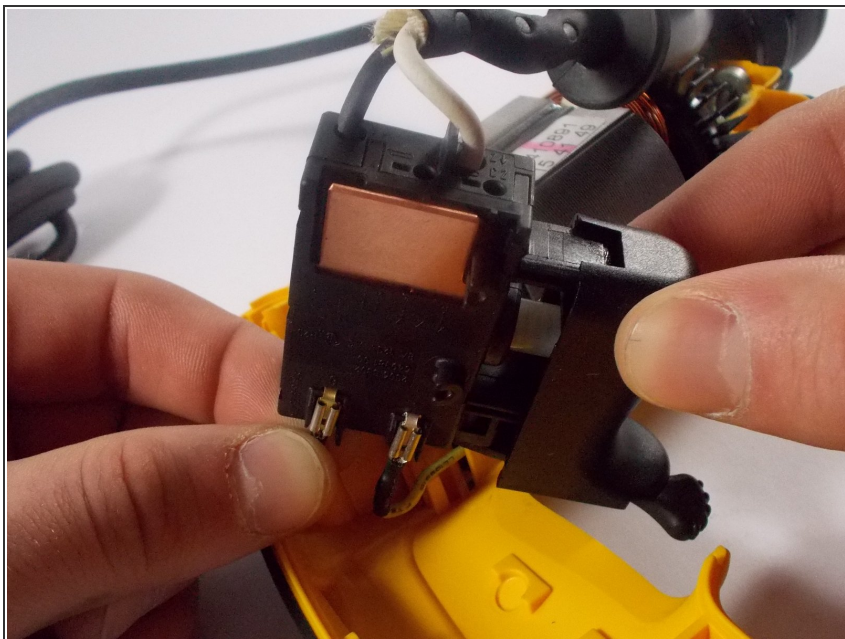
- ❗ The power cord and the trigger act as a single part and must be replaced together.
- Using one hand grab the trigger box and with the other grab the end of the wire connecting to the trigger box and disconnect the wire.

### Step 4



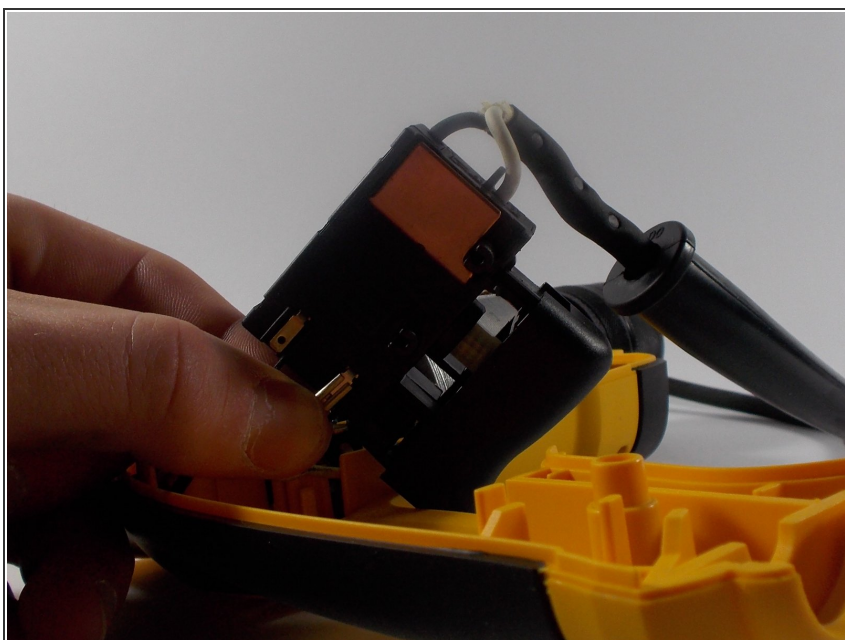
- Disconnect the second connected wire from the top of the trigger box.

## Step 5



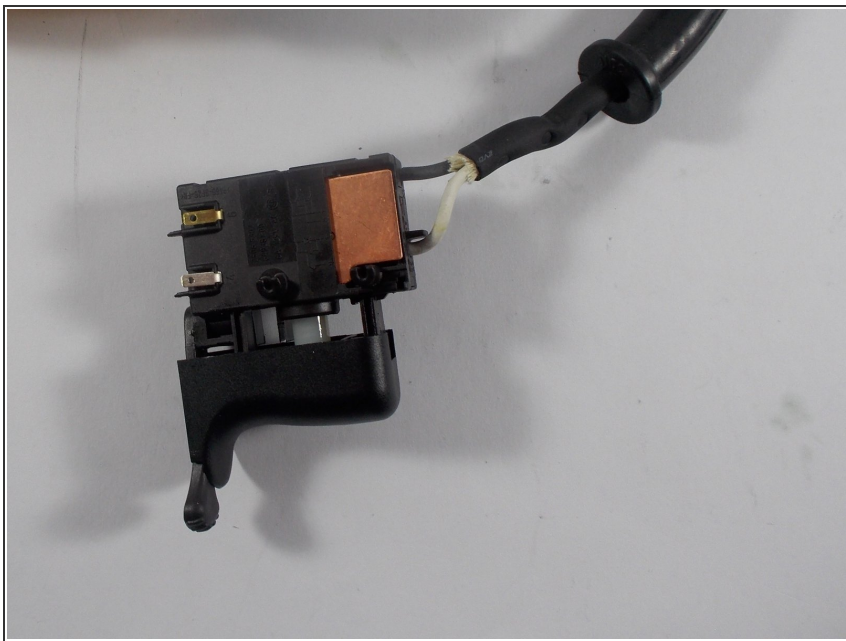
- Lift the trigger box up to reveal the bottom side.
- Disconnect the first connected wire from the bottom of the trigger box.

## Step 6



- Disconnect the last wire from the trigger box using the same method from the previous step.

## Step 7



- After all four wires are disconnected, the trigger and power cord are separated from the drill.
- ⓘ The power cord and trigger can be set aside if further disassembly is required.

To reassemble your device, follow these instructions in reverse order.