



# DeWalt DWE305 Motor Assembly Replacement

This guide will provide step-by-step instructions for how to access and replace the motor assembly for the DeWalt DWE305 reciprocating saw.

Written By: Leanna Pollicar



## INTRODUCTION

Is your DeWalt Reciprocating Saw having trouble turning on and performing? This guide will show you how to access the DWE305 motor assembly. All you will need is an iFixit Precision Bit Driver, a Torx T20H bit, and a Torx T15H bit in order to complete this task.



### TOOLS:

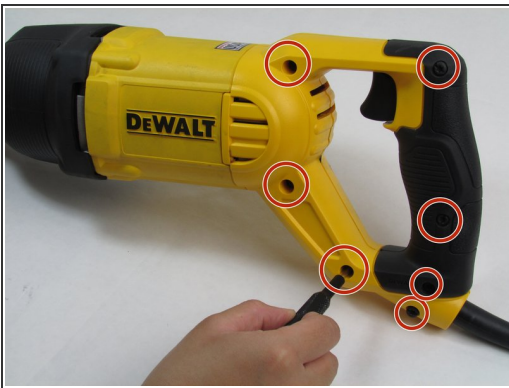
- [iFixit Precision Bit Driver](#) (1)
  - [T20 Torx Screwdriver](#) (1)
  - [T15 Security Torx Screwdriver](#) (1)
  - [Phillips #2 Screwdriver](#) (1)
-

## Step 1 — Motor Assembly



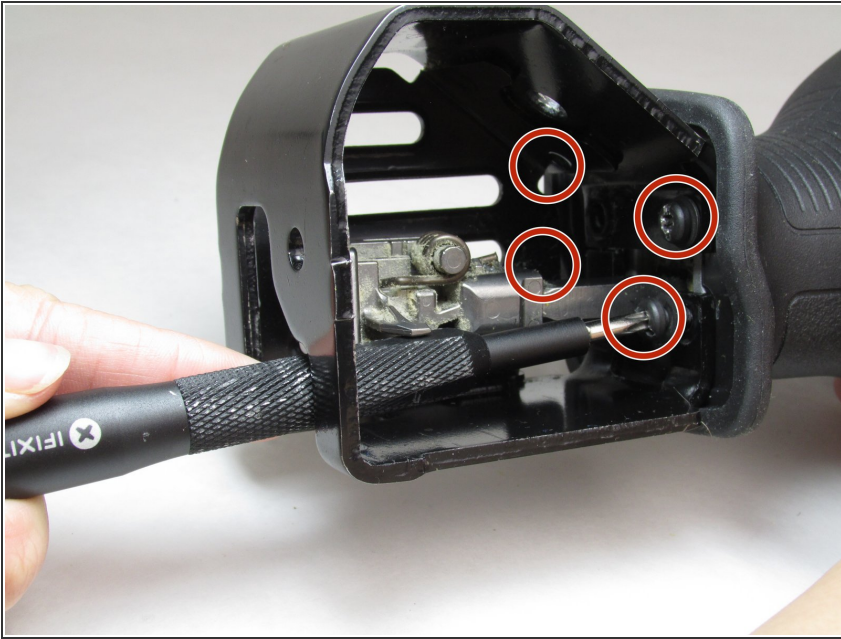
- Use a #2 Phillips head screwdriver to unscrew the large screw from the lock area of the device.

## Step 2



- Remove the seven 3/4" Button Head Torx Security screws out of the handle with the Torx T20H bit and iFixit Precision Bit Driver.
- Take the top cover off after removing the screws.
- Remove the single 3/4" Button Head Torx Security screw from inside the handle using the Torx T15H bit, and pull the trigger assembly from the handle (This step is not required but will make disassembly easier).

### Step 3



- Use a Torx T20H bit and the iFixit Precision Bit Driver to remove the four 3/4" Button Head Torx Security screws from inside the shoe housing (Be aware of the sharp points on the housing.)

### Step 4



- Once the four safety housing bolts are removed pull the black plastic cover (the shoe) from the device.
- Slide the black rubber component (the boot) off to expose the reciprocating shaft and metal plate.
- ⓘ There will be white lithium grease used for lubrication on the internal surface of the cover.

This document was generated on 2020-02-07 04:03:32 AM (MST).



## Step 5



- Remove the rubber gasket from over the 4 Torx security screws at the base of the gear assembly on the lower part of the device (Do not forget this when you put it back and make sure that you have it facing the proper direction).

## Step 6



- Remove the four 3/4" Button Head Torx Security screws from the front with the Torx T20H bit.
- Turn the device over and remove the two 3/4" screws from the handle area with the Torx T20H bit.

## Step 7



- Pull out the motor assembly (it is magnetic so it takes a bit of force) and inspect it for damage or dust.

## Step 8



- If there is damage then replace or repair the device, if no damage is seen then check other components (Damage can range from a bit of filament on the device that you can sand off with sandpaper to gouges or a burnt brush that are not easy to fix.)

To reassemble your device, follow these instructions in reverse order.