



DeWalt DWE4011 Armature Replacement

How to replace a DeWalt DWE4011 armature.

Written By: Kory Dalesky



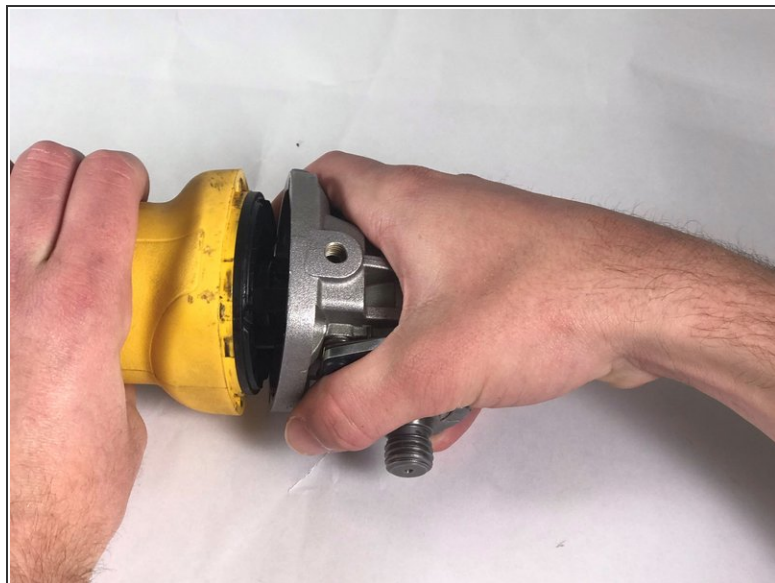
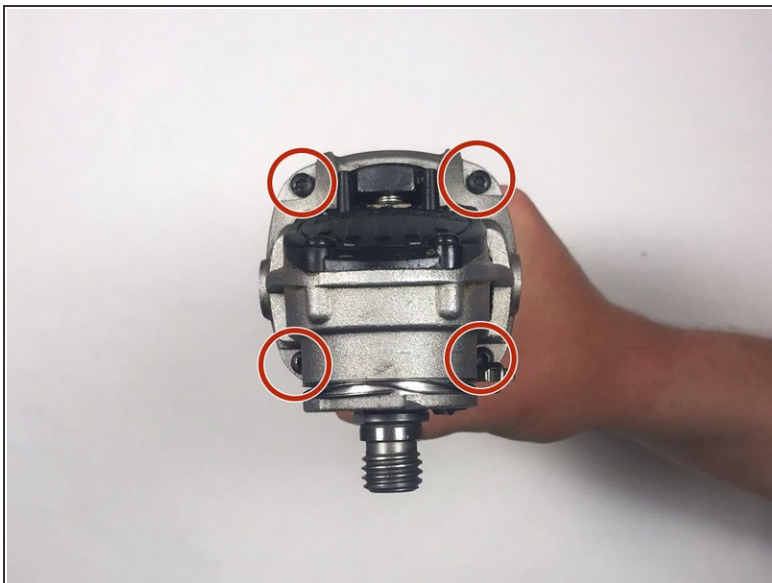
INTRODUCTION

The armature allows electrical current to go through the device and provide power to the grinding wheel. Without the armature, there would be no torque or power to spin the grinder. This guide will show how to replace it.

TOOLS:

- [T15 Torx Screwdriver](#) (1)
-

Step 1 — Armature



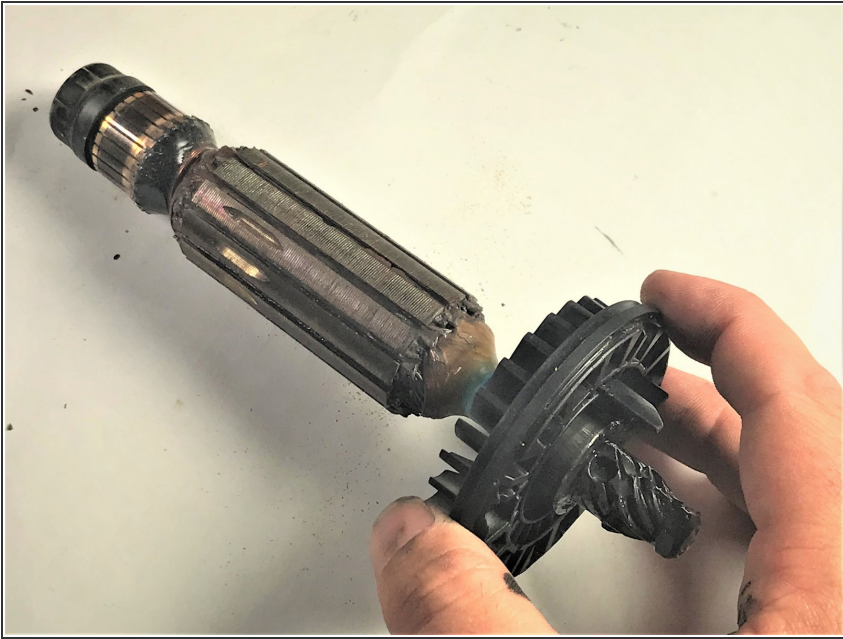
- Remove the four T15 Torx screws from the front of the grinder and remove the face plate from the body.

Step 2



- Pull away the armature from the body.

Step 3



- Remove the armature entirely from the body.

To reassemble your device, follow these instructions in reverse order.