



DeWalt DWE4011 Power Switch Replacement

How to replace a DeWalt DWE4011 power switch.

Written By: Kory Dalesky



INTRODUCTION

The power switch is for turning the device on and off. It can have trouble and not work if the button in the switch box wears out. This is a guide on how to repair the power switch



TOOLS:

- [T15 Torx Screwdriver](#) (1)
 - [Spudger](#) (1)
-

Step 1 — Power Switch



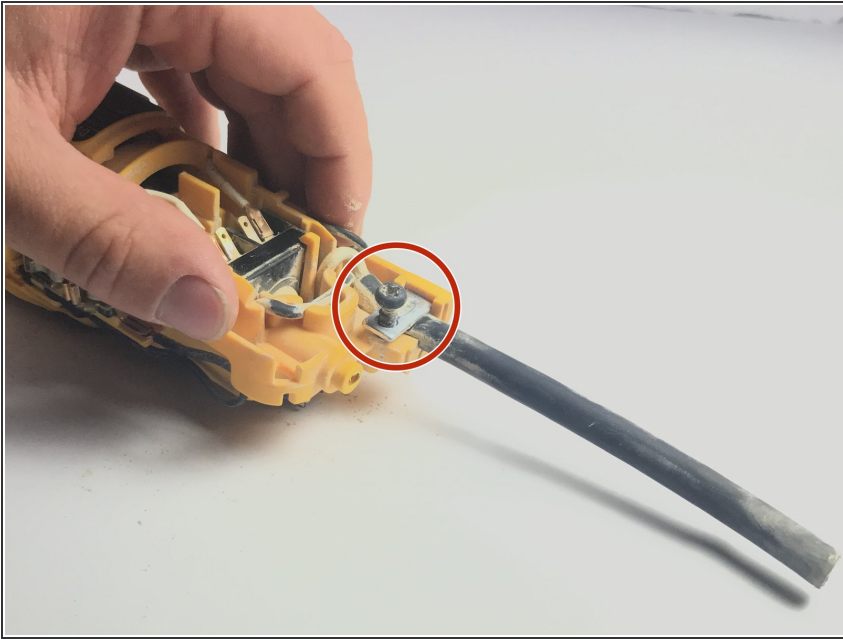
- Turn to the bottom of the device and remove the 1 1/4" screw shown using a T15 Torx Screwdriver.

Step 2



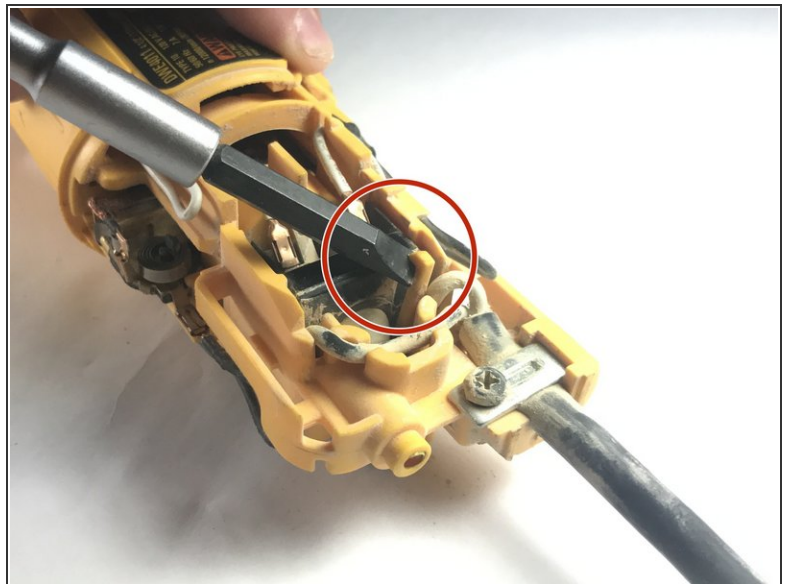
- Remove the outer casing by pulling the end handle away from the field case.

Step 3



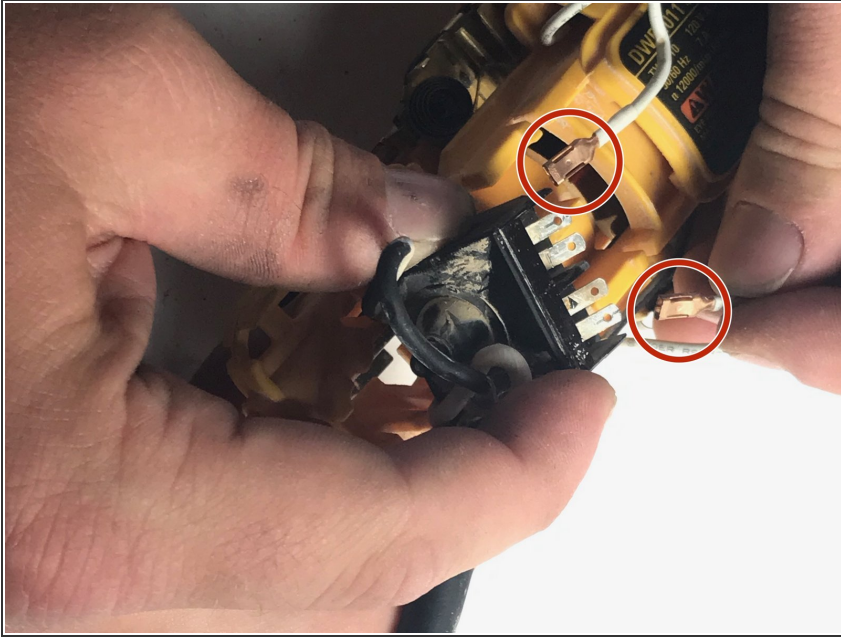
- Unscrew the pin that is holding the main power cord in place and remove the cord.

Step 4



- Pull back the tab holding the switch box in place using a nylon spudger. There is one on top and bottom shown in the image.

Step 5



- Remove the switch box entirely from its normal position. Gently pull off the connections from the switch box to the motor.

Step 6



- Using a small Phillips head screwdriver, remove the screws that hold the white colored wires from the power cord in place.

To reassemble your device, follow these instructions in reverse order.

This document was generated on 2019-09-22 01:07:53 PM (MST).

