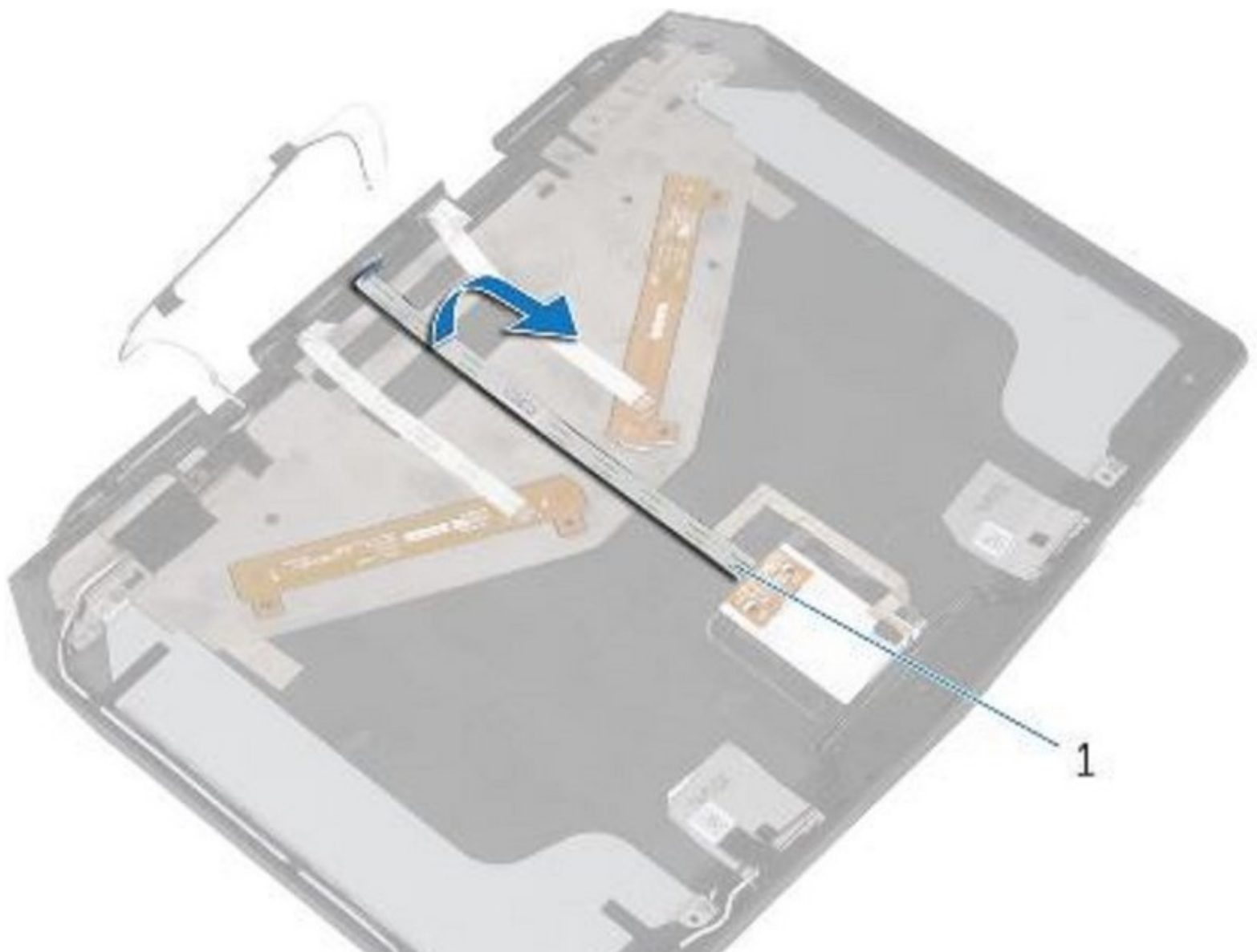




Dell Alienware 13 Display Back-Cover Replacement

Dell Alienware 13 Display Back-Cover Replacement

Written By: Terrence15



INTRODUCTION

In this guide, we will show you how to remove and replace the Display Back-Cover.



TOOLS:

- [Heavy-Duty Spudger](#) (1)
 - [Phillips #1 Screwdriver](#) (1)
-

Step 1 — Base Panel



⚠ Working on an electrical device while plugged in can cause injury due to electrical shock. Ensure that all external power is disconnected from the device.

- Close the device and turn the device over.

Step 2



- Remove (2) 5 mm Phillips head screws attaching the small access panel to the base using a Phillips # 1 screwdriver.
- ⓘ The (2) screws are attached to the base panel with retaining clips and won't completely detach from the panel.

Step 3



- Remove the small access panel using a heavy duty spudger.

Step 4 — Caution



- ⚠ CAUTION: Solid-state drives are fragile. Exercise care when handling the hard drive.
- ⚠ CAUTION: To avoid data loss, do not remove the solid-state drive while the computer is in sleep or on state.

Step 5 — Pull Tab



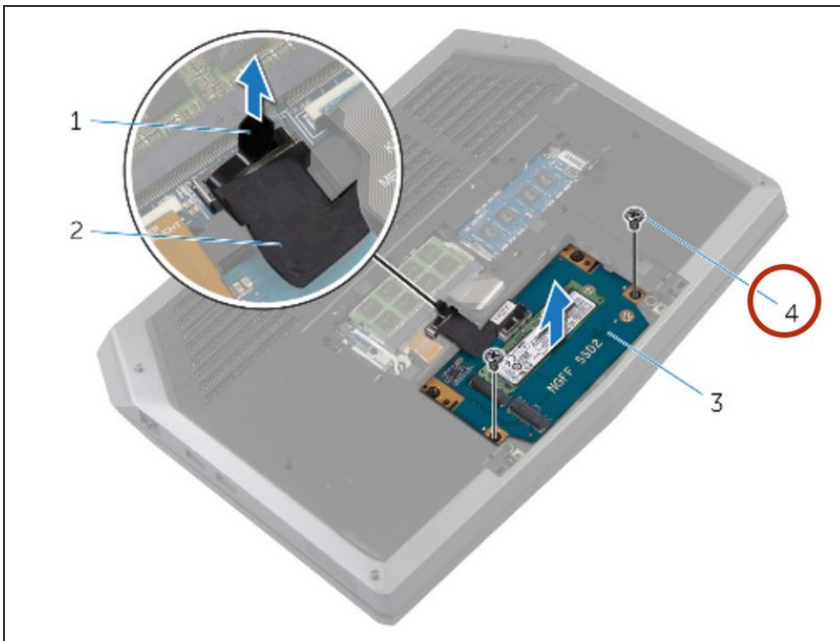
- Using the pull tab, pivot the solid-state drive bracket and peel off the bracket from the tabs on the computer base.

Step 6 — Disconnecting the State Drive



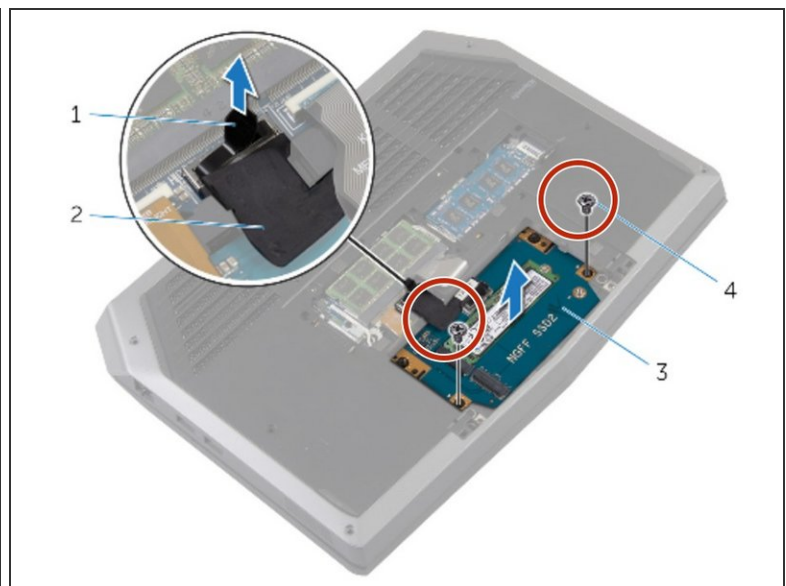
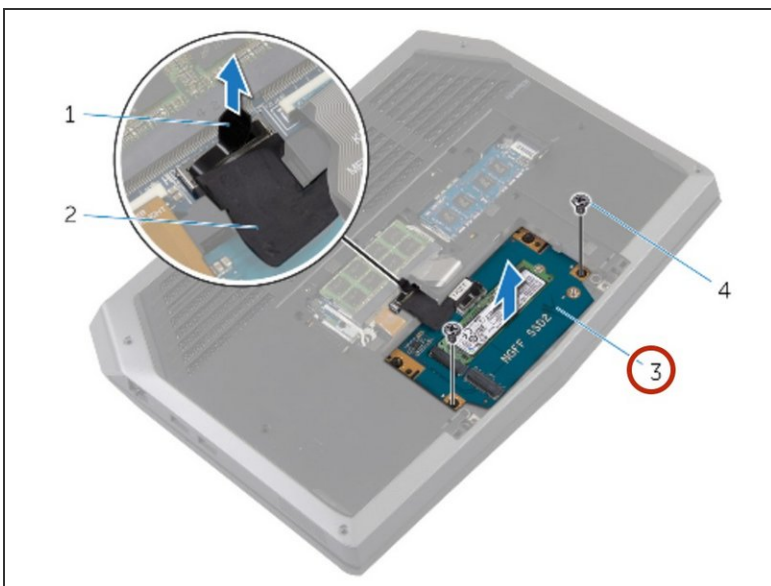
- Using the pull tab, disconnect the solid-state drive cable from the system board.

Step 7 — Remove Screws



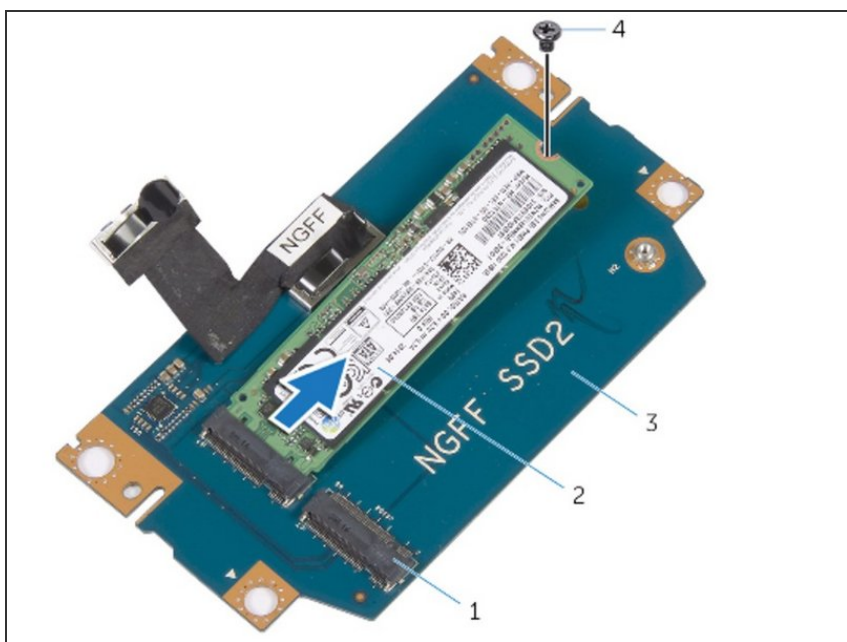
- Remove the screws that secure the solid-state drive assembly to the computer base.

Step 8 — Solid-State Drive Assembly Lift



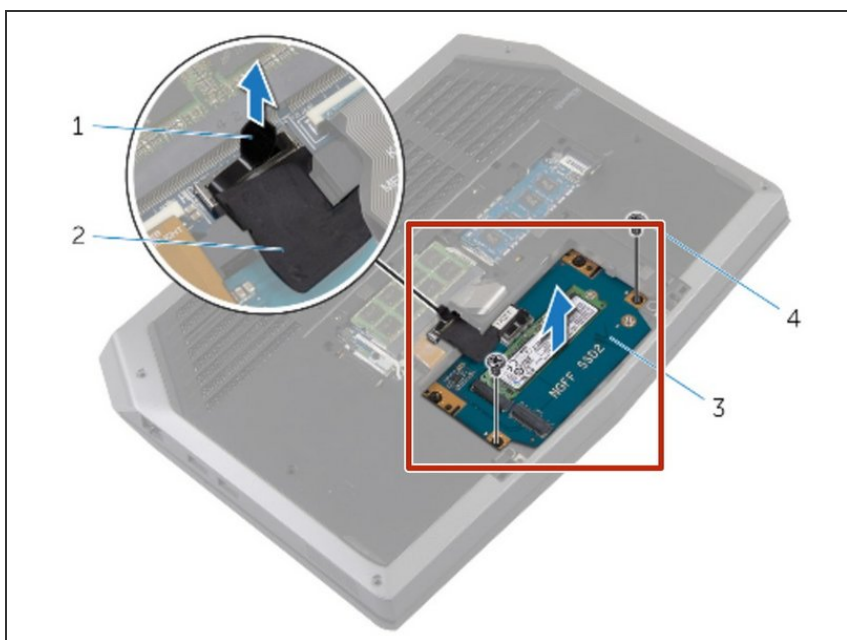
- Lift the solid-state drive assembly off the computer base.
- Make sure the screws are off the solid-state assembly.

Step 9 — Slide and Lift



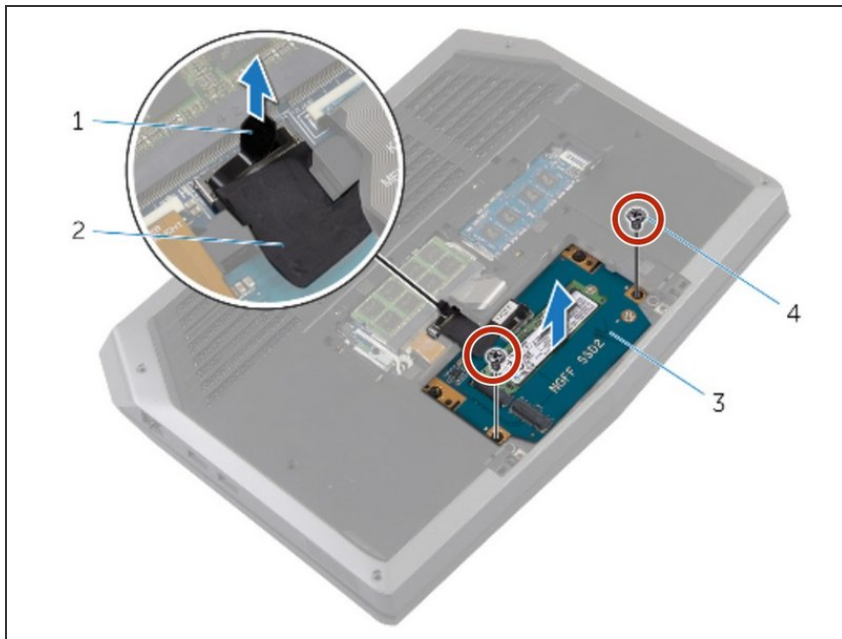
- Slide and lift the solid-state drive off the solid-state assembly.

Step 10 — Replacing the Solid-State Drive



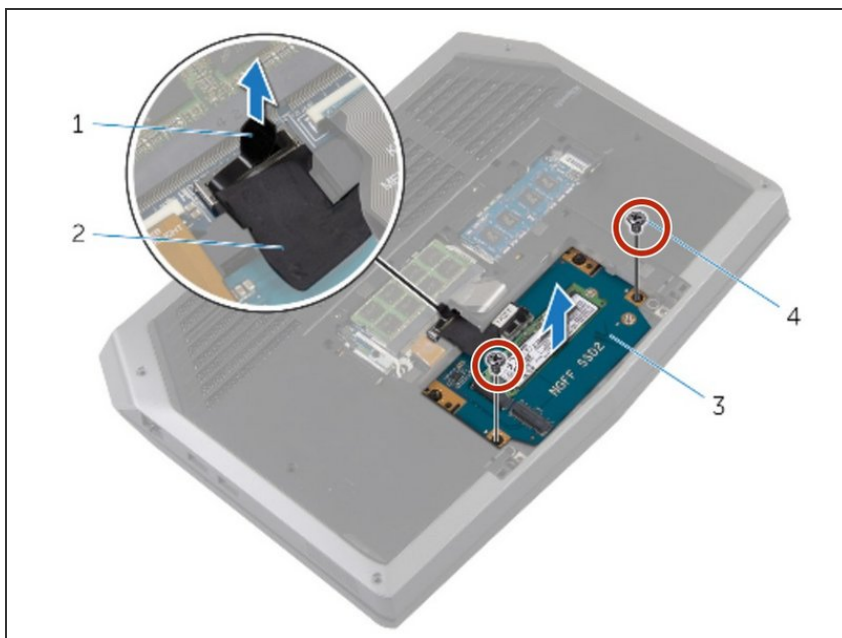
- ⚠ CAUTION: Solid-state drives are fragile. Exercise care when handling the hard drive.
- Slide the new solid-state drive into the solid-state drive assembly.

Step 11 — Replace the Screw



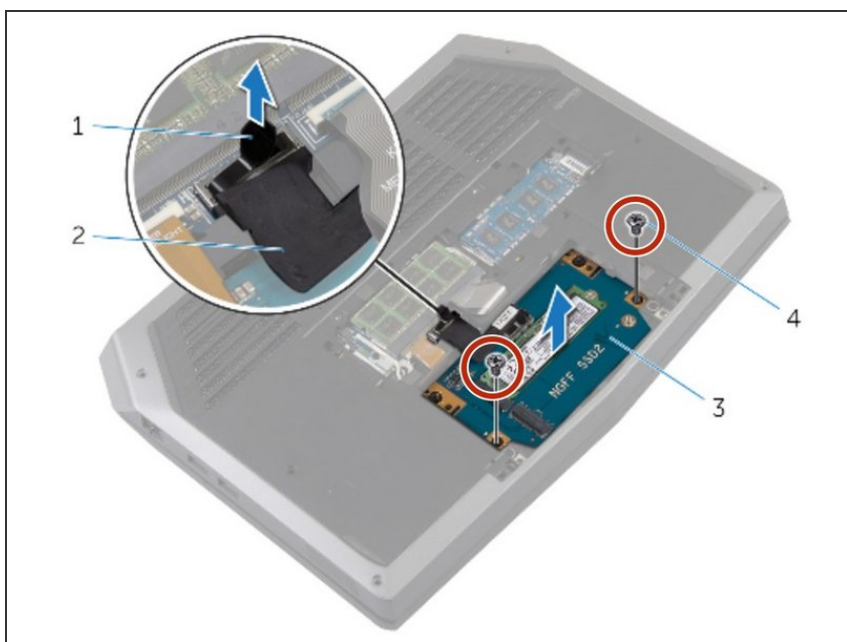
- Replace the screw that secures the solid-state drive assembly with the screw holes on the computer base.

Step 12 — Screw Align



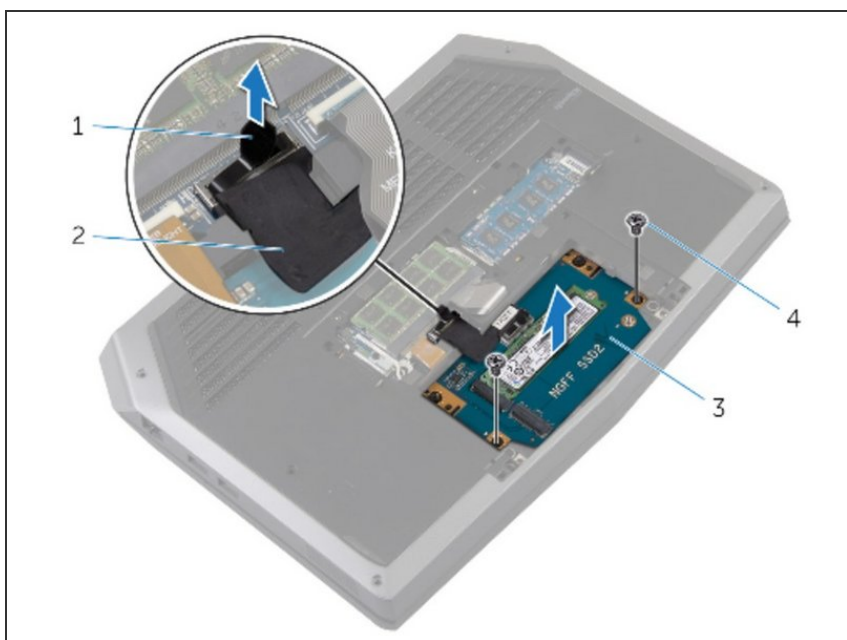
- Align the screw holes on the solid-state drive assembly with the screw holes on the computer base.

Step 13 — Screw Replacement



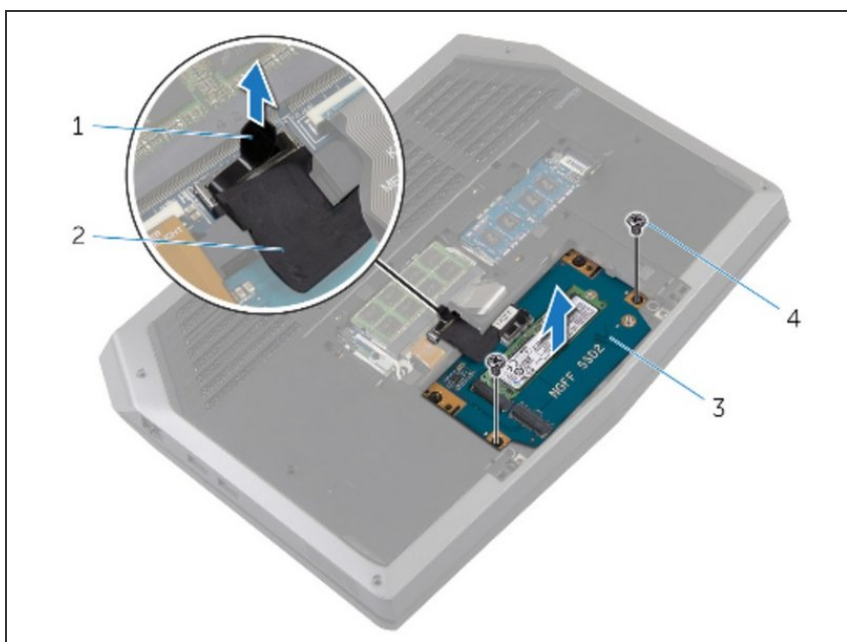
- Replace the screws that secure the solid-state drive assembly to the computer base.

Step 14 — Connecting the Drive



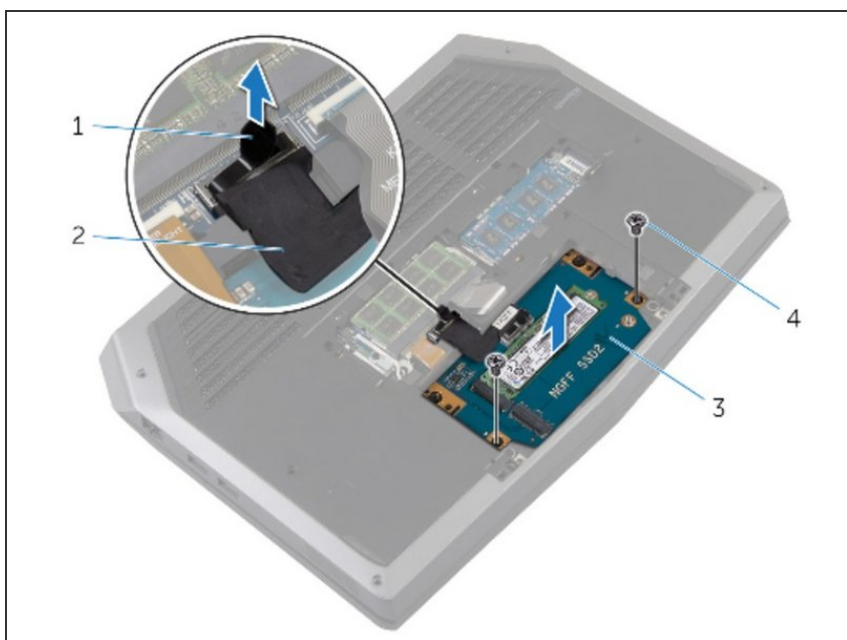
- Connect the solid-state drive cable to the system board.

Step 15 — Aligning Screws



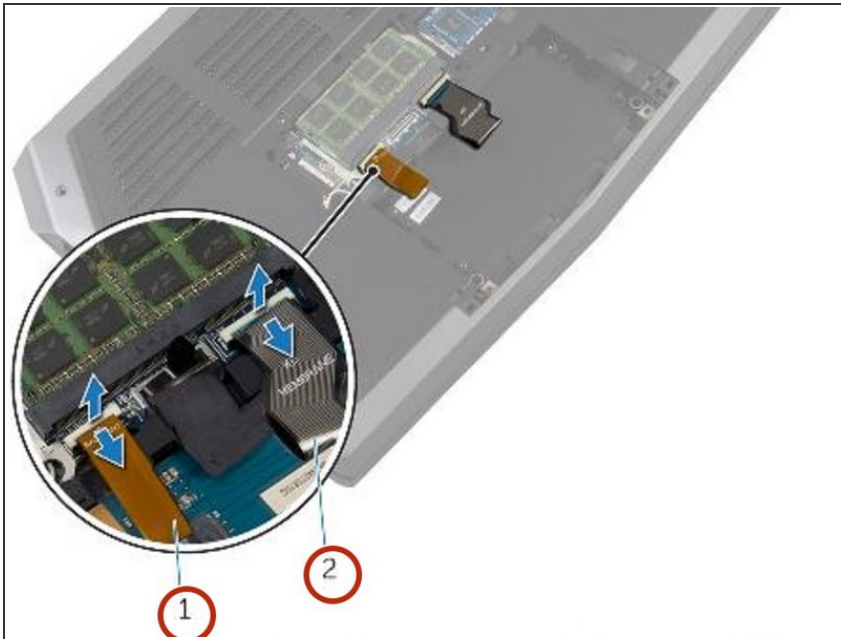
- Align the screws on the solid-state drive bracket with the screw holes on the solid-state drive assembly.

Step 16 — Replacing Screws



- Replace the screws that secure the solid-state drive bracket to the solid-state drive assembly.

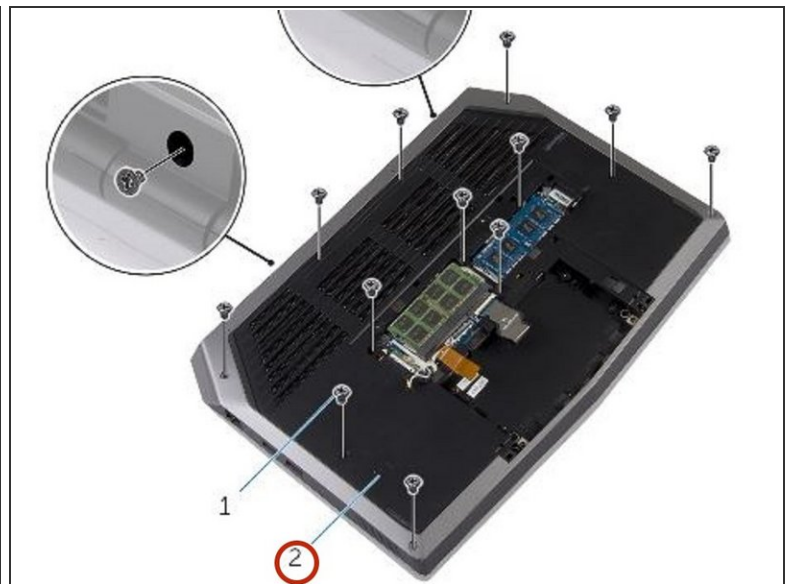
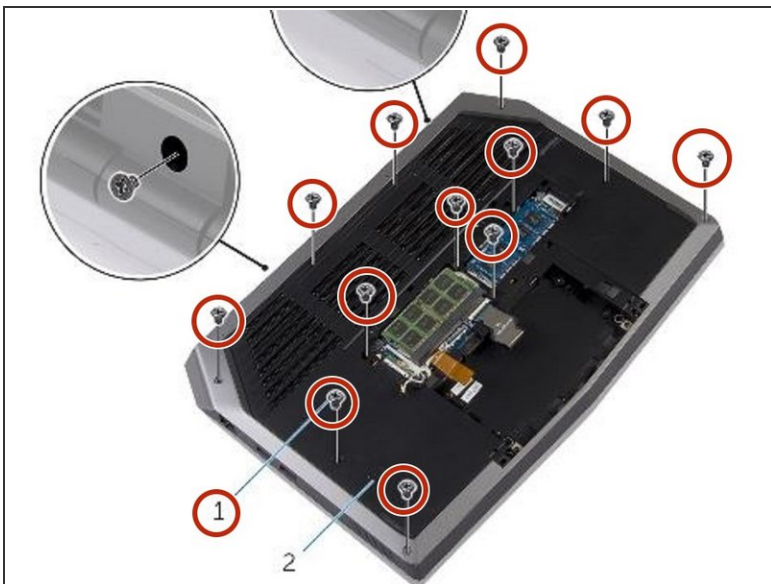
Step 17 — Disconnecting the Keyboard



⚠ WARNING: Before working inside your computer, read the safety information that shipped with your computer and follow the steps in [Before Working Inside Your Computer](#). After working inside your computer, follow the instructions in [After Working Inside Your Computer](#).

- Lift the latches and disconnect the keyboard and keyboard-backlight cables from the system board

Step 18 — Removing the Screws



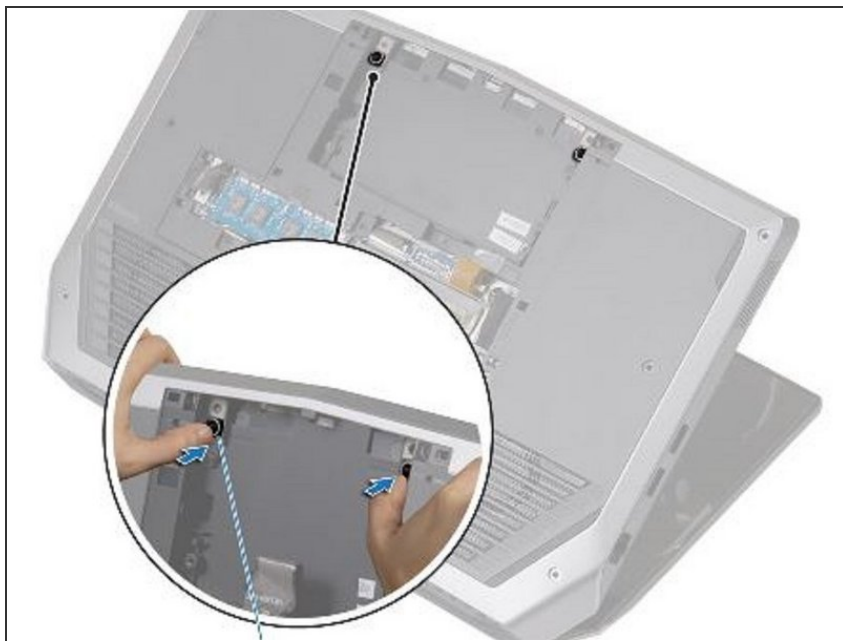
- Remove the screws that secure the palm-rest assembly to the computer base.

Step 19 — Popping out the Palm-Rest Assembly



- Lift the computer base slightly and push the release tabs on the palm-rest assembly until it pops out.

Step 20 — Turn the Computer Over



- Turn the computer over and open the display as far as possible.

Step 21 — Prying the Edges



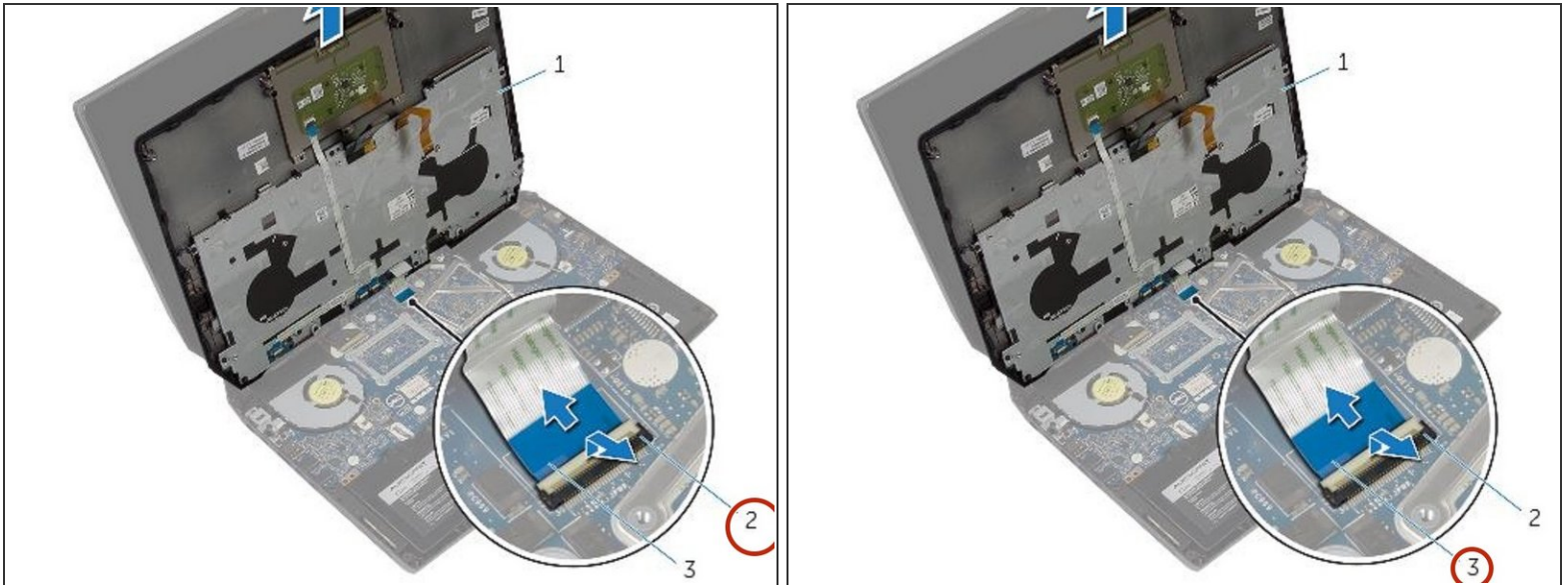
- Using a plastic scribe, pry up along the edges of the palm-rest assembly.

Step 22 — Lifting the Palm-Rest Assembly



- Gently lift the palm-rest assembly and turn it over.

Step 23 — Disconnecting the Power-Board Cable



- Lift the connector latch and disconnect the power-button board cable from the system board.

Step 24 — Removing Parts



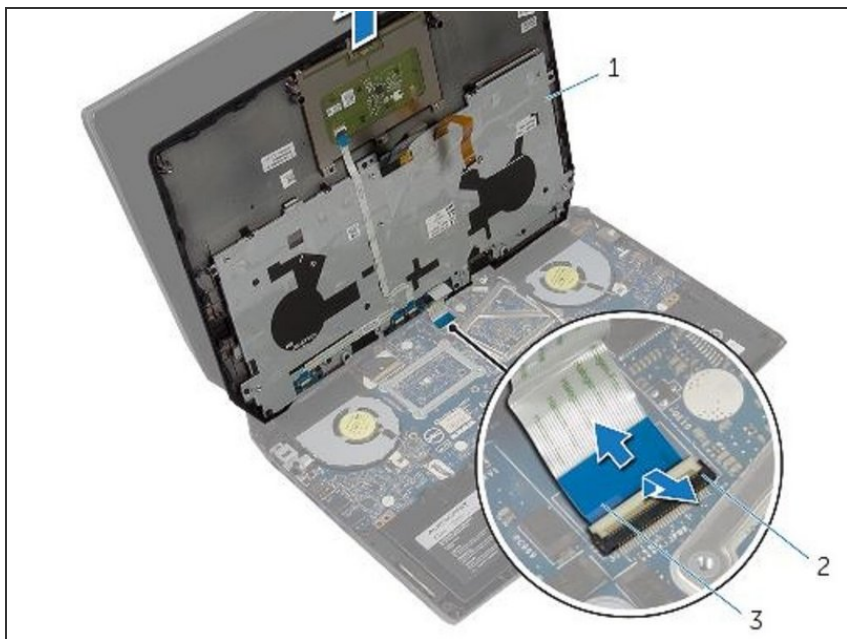
- Remove the Keyboard.
- Remove the power-button board.
- Remove the status-light board.
- Remove the touchpad.

Step 25 — Replacement



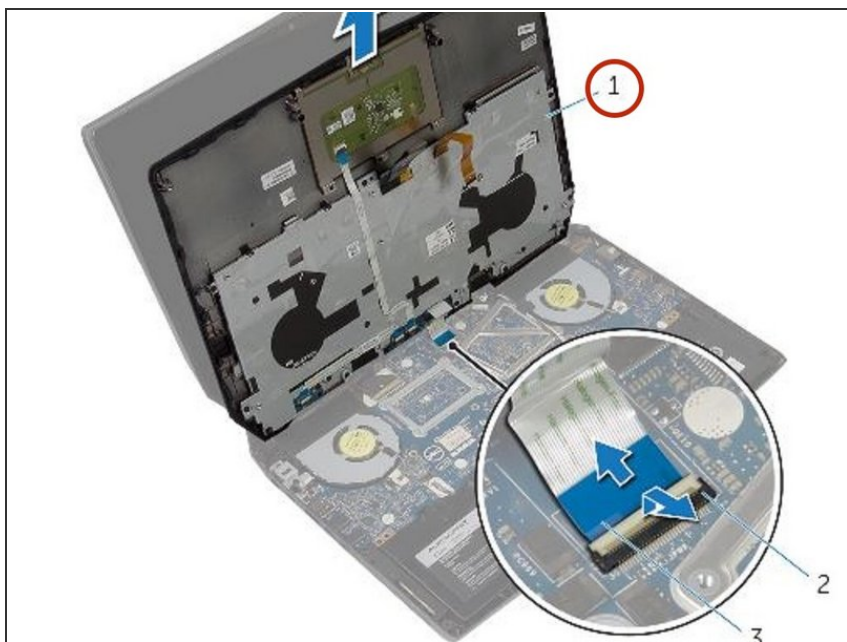
- Replace the touchpad.
- Replace the status-light board.
- Replace the power-button board.
- Replace the keyboard.

Step 26 — Connecting the Power-Button Board Cable



- Connect the power-button board cable to the system board.

Step 27 — Aligning the Palm-Rest Assembly.



- Align the palm-rest assembly on the computer base and snap it into place.

Step 28 — Closing the Display and Turning Over the PC



- Close the display and turn the computer over.

Step 29 — Replacing Screws



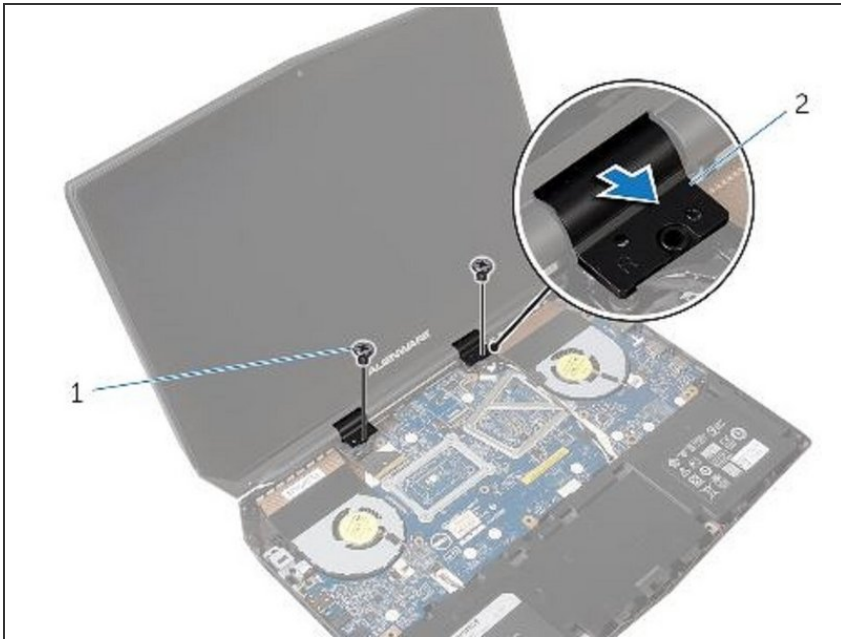
- Replace the screws that secure the palm-rest assembly to the computer base.

Step 30 — Connect the Keyboard Cable



- Connect the keyboard cable and the keyboard-backlight cable to the system board.

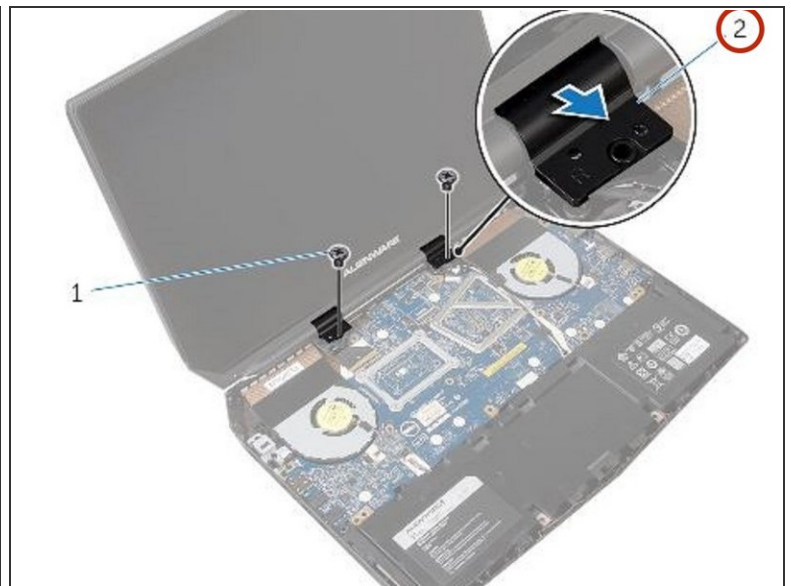
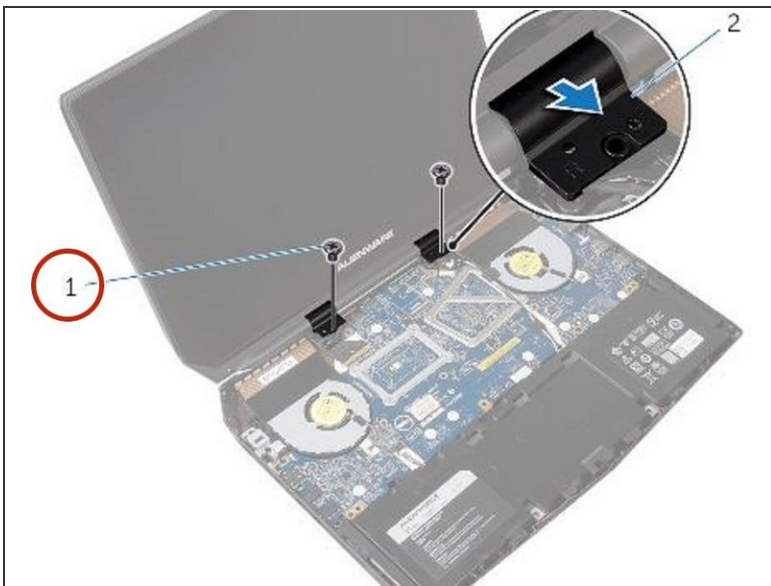
Step 31 — Open the Display



⚠ WARNING: Before working inside your computer, read the safety information that shipped with your computer and follow the steps in [Before Working Inside Your Computer](#). After working inside your computer, follow the instructions in [After Working Inside Your Computer](#).

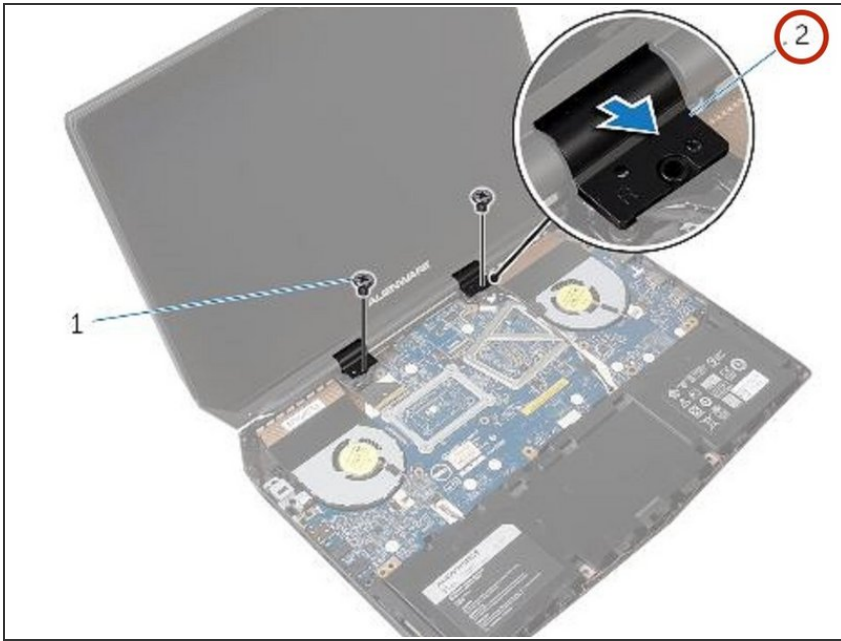
- Open the display as far as possible.

Step 32 — Removing the Screws



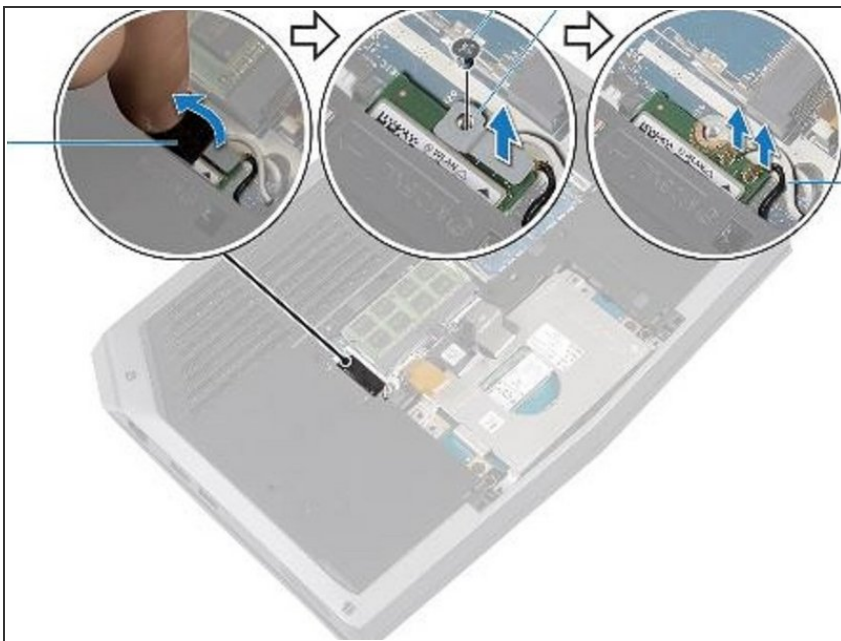
- Remove the screws that secure the hinge caps to the display hinges.

Step 33 — Lift the Hinge Caps



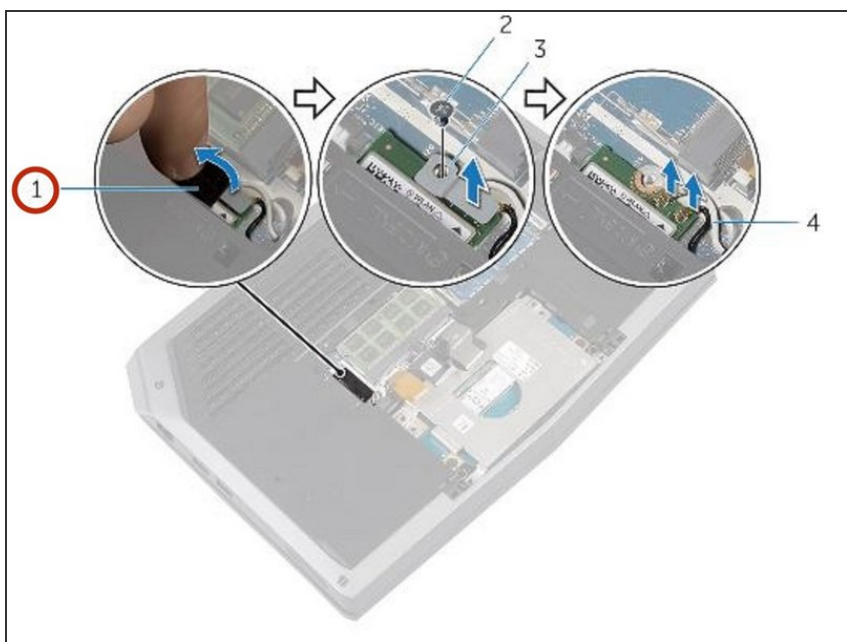
- Slide and lift the hinge caps off the display hinges.

Step 34 — Close the Display



- Close the display and turn the computer over.

Step 35 — Peeling the Adhesive Tape



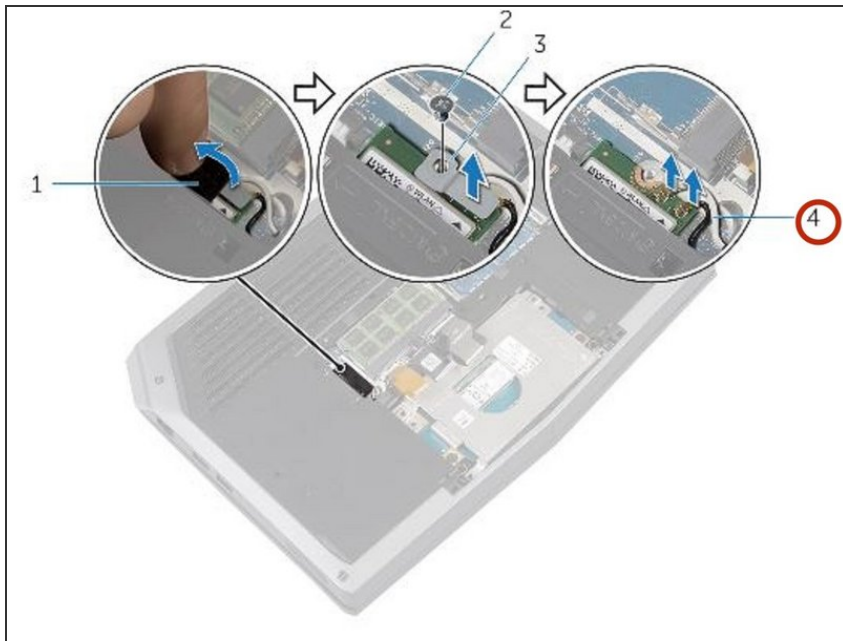
- Peel off the adhesive tape from the wireless card.

Step 36 — Remove the Screw



- Remove the screw that secures the wireless-card bracket to the wireless card.

Step 37 — Disconnecting the Antenna Cables



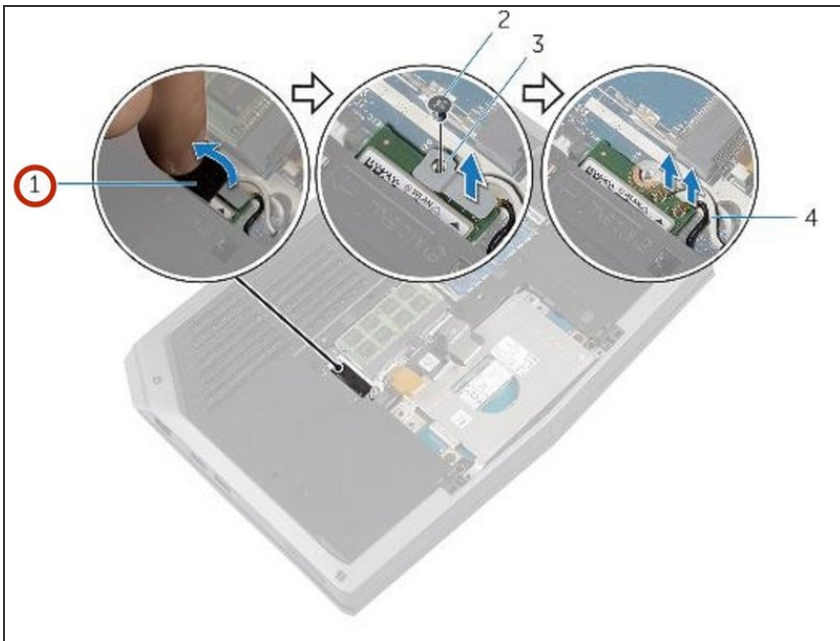
- Disconnect the antenna cables from the wireless card.

Step 38 — Open the Display



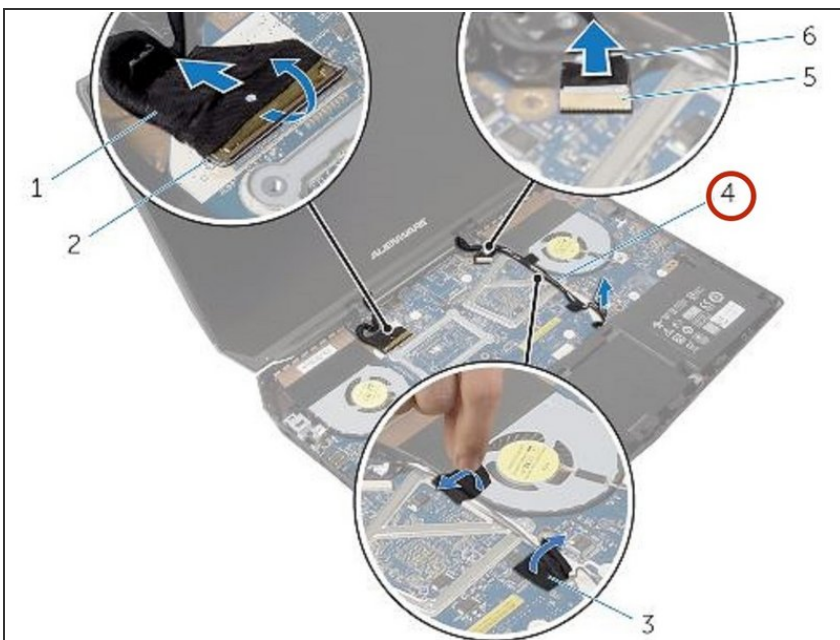
- Turn the computer over and open the display.

Step 39 — Peeling the Adhesive Tapes



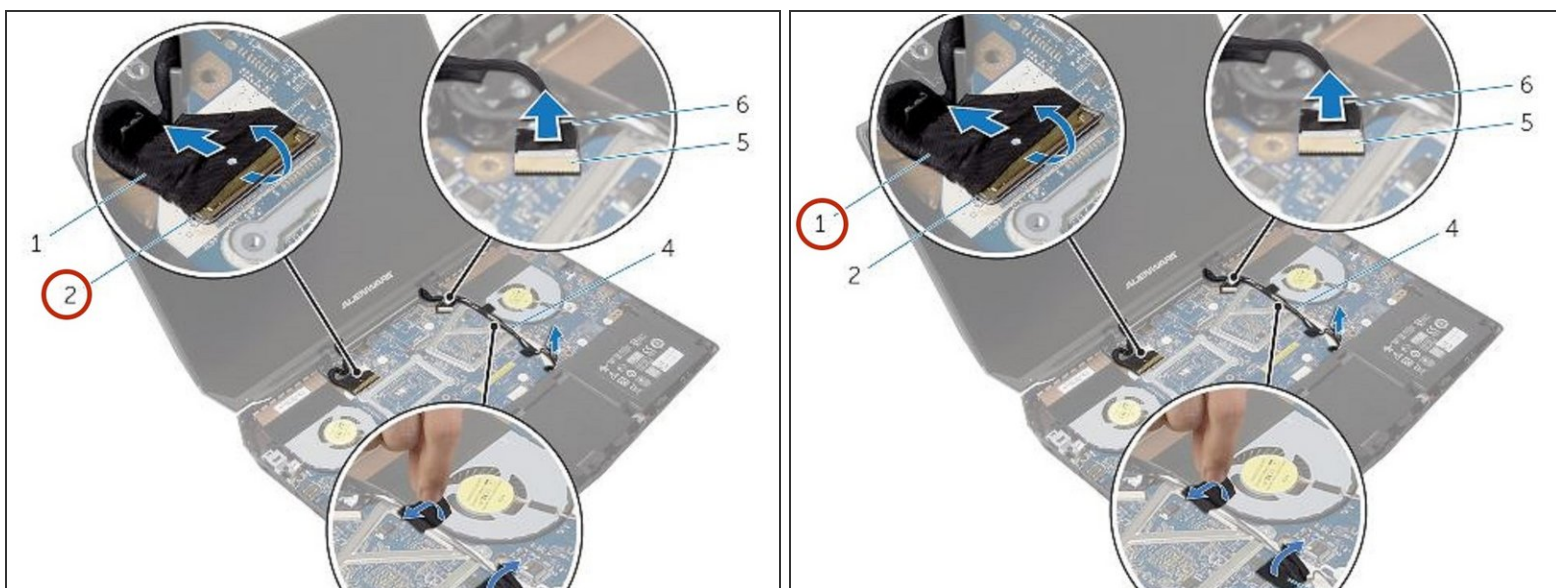
- Peel off the adhesive tapes that secure the antenna cables to the system board.
- ⓘ Make note of the cable routing before removing any cable from its routing guide.

Step 40 — Removing the Antenna Cables



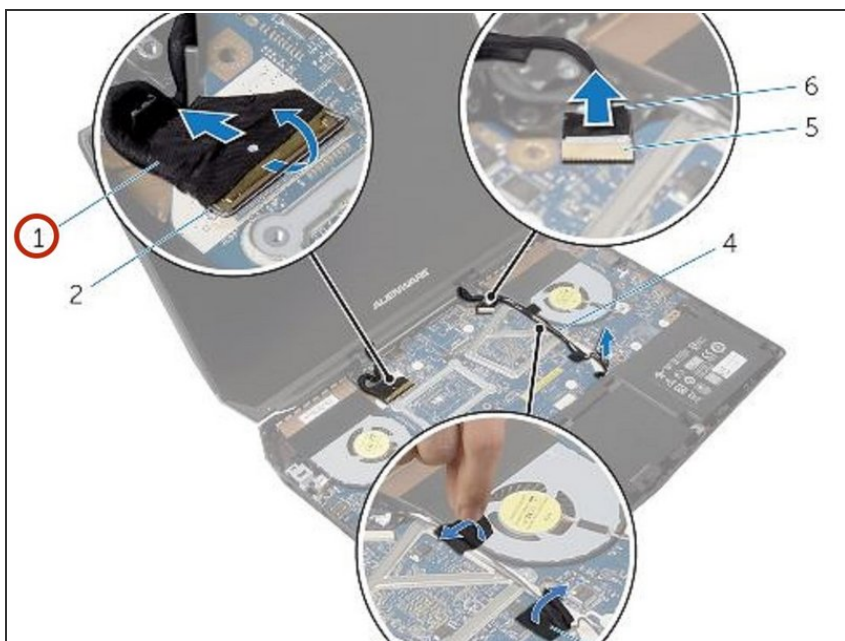
- Remove the antenna cables from the routing guides on the display hinges.

Step 41 — Disconnecting the Display Cable



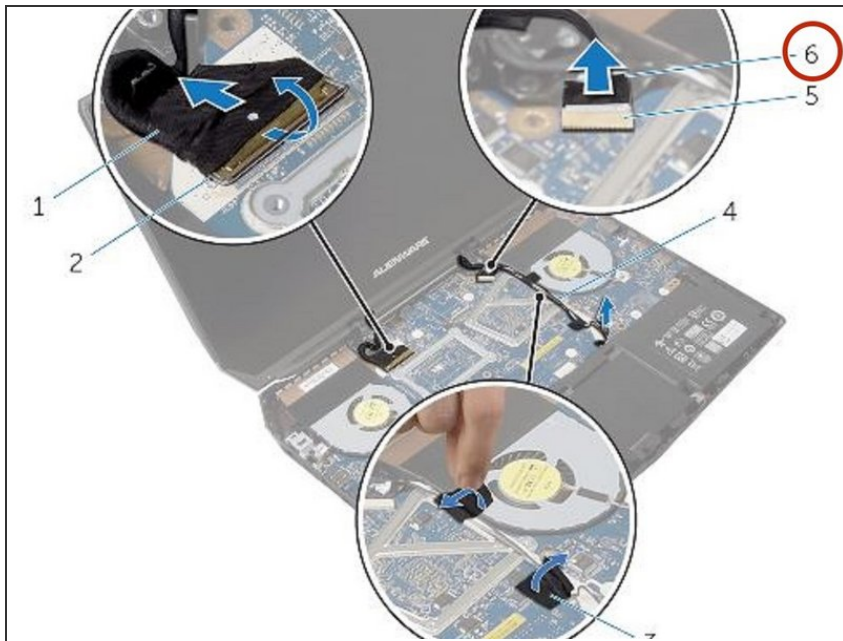
- Lift the connector latch and disconnect the display cable from the system board.

Step 42 — Removing the Display Cable



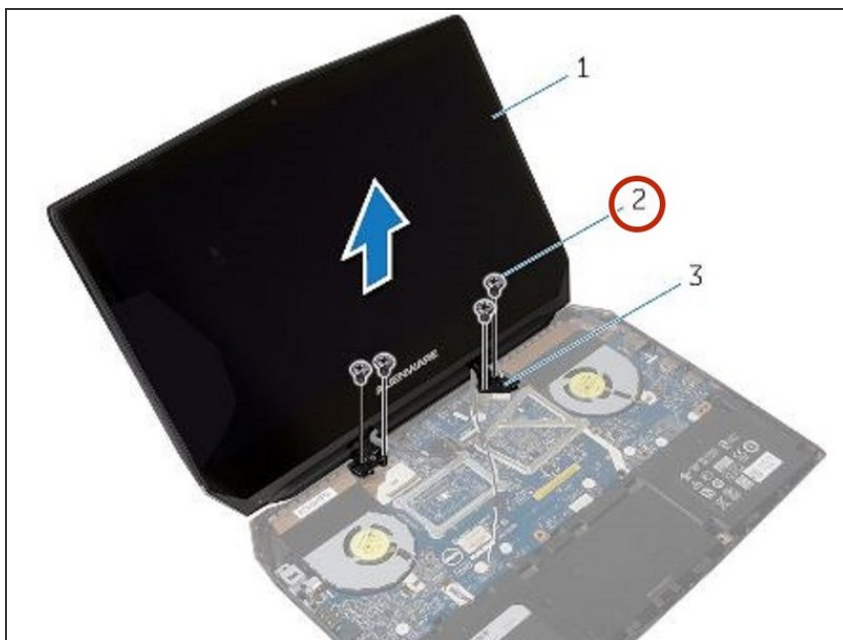
- Remove the display cable from the routing guides on the display hinges.

Step 43 — Disconnecting the Logo-Board Cable



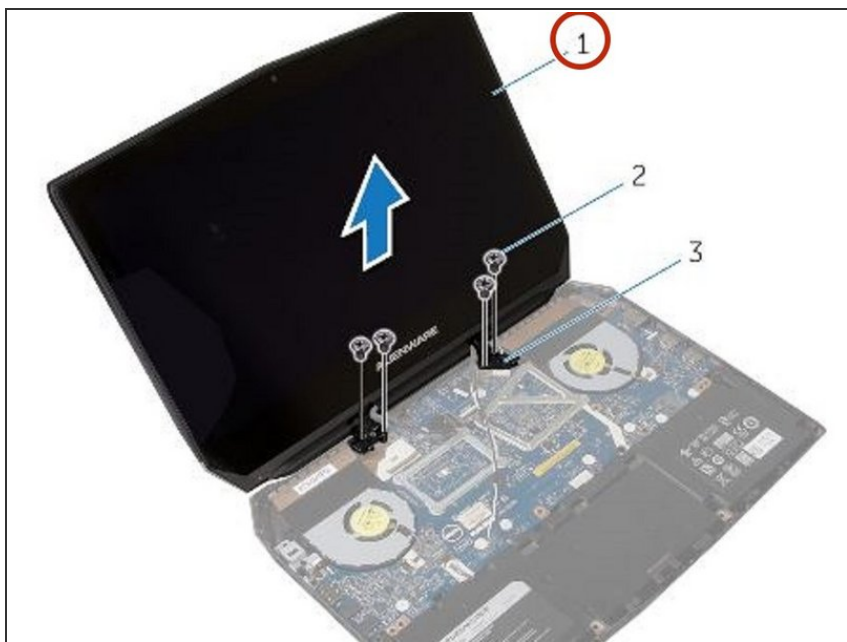
- Disconnect the logo-board cable from the system board and remove it from the routing guides on the display hinges.

Step 44 — Removing the Screws



- Remove the screws that secure the display assembly to the computer base.

Step 45 — Lifting the Display Assembly



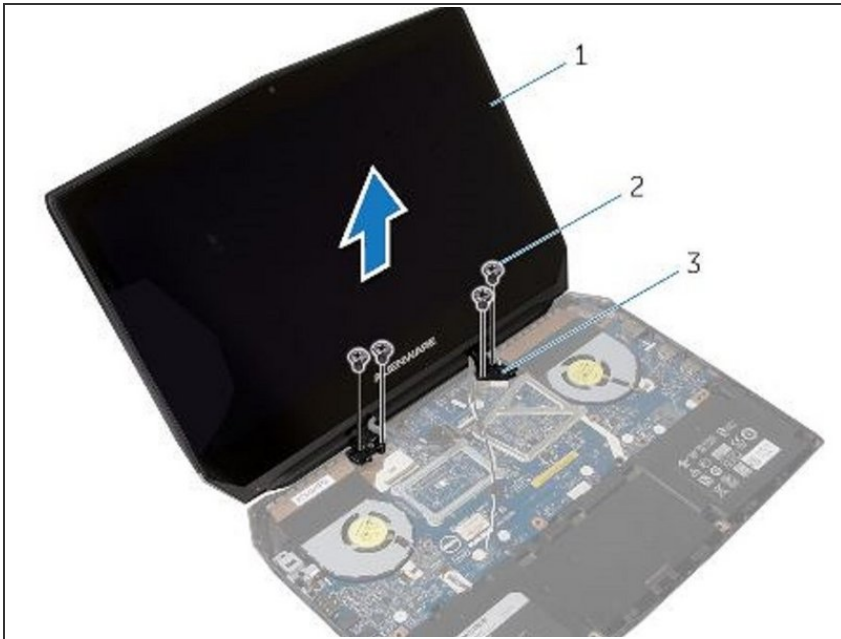
- Lift the display assembly off the computer base.

Step 46 — Align the Screw Holes



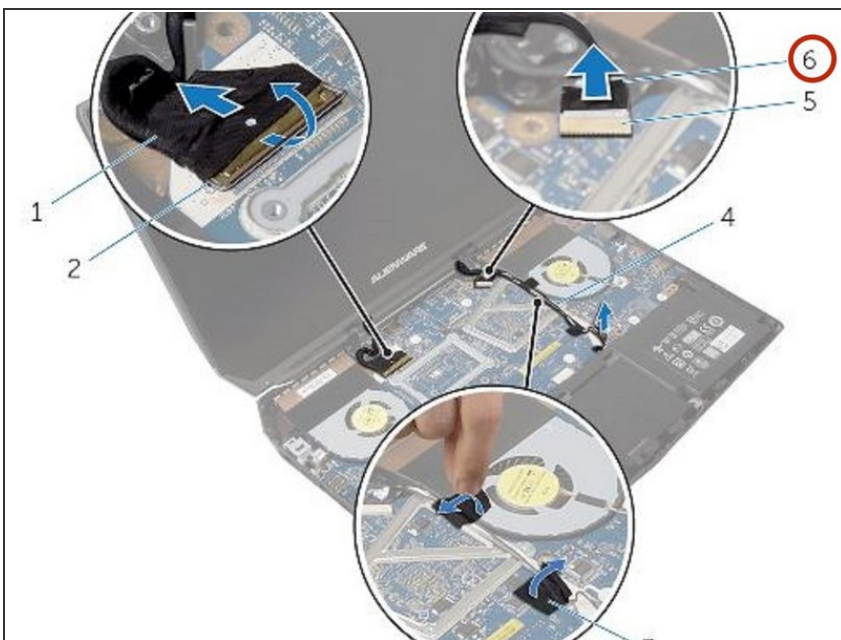
- Align the screw holes on the display hinges with the screw holes on the computer base.

Step 47 — Replacing the Screws



- Replace the screws that secure the display hinges to the computer base.

Step 48 — Connecting the Logo-Board Cable



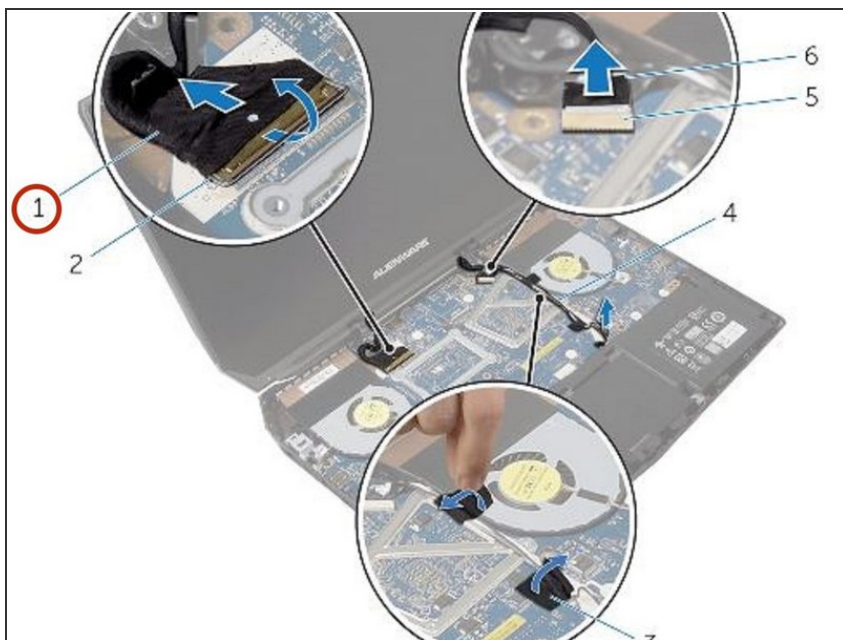
- Route the logo-board cable through the routing guides on the display hinge and connect the logo-board cable to the system board.

Step 49 — Routing the Display Cable



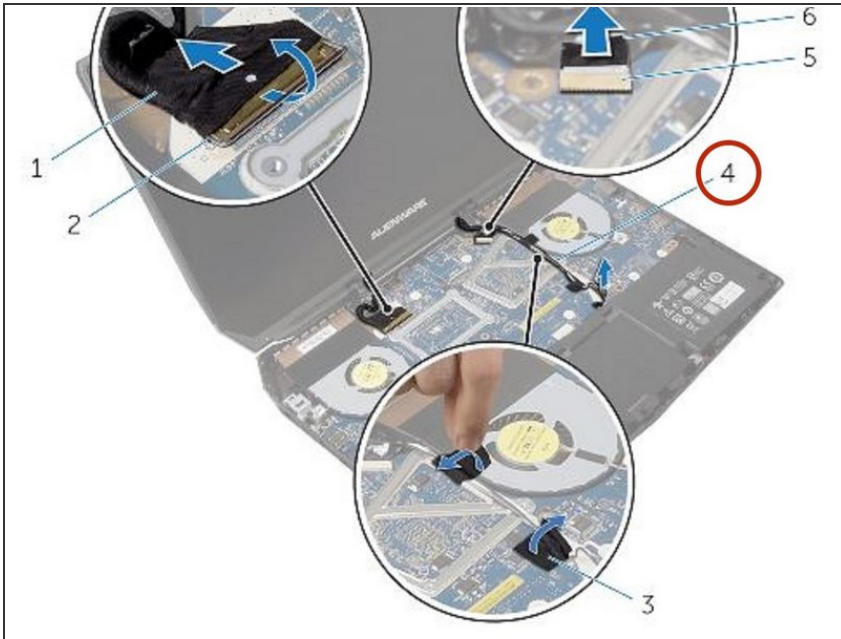
- Route the display cable through the routing guides on the display hinge.

Step 50 — Sliding the Display Cable



- Slide the display cable into the connector on the system board and press down the latch to secure the cable.

Step 51 — Route the Antenna Cables



- Route the antenna cables through the routing guides on the display hinges.

Step 52 — Adhering the Tapes



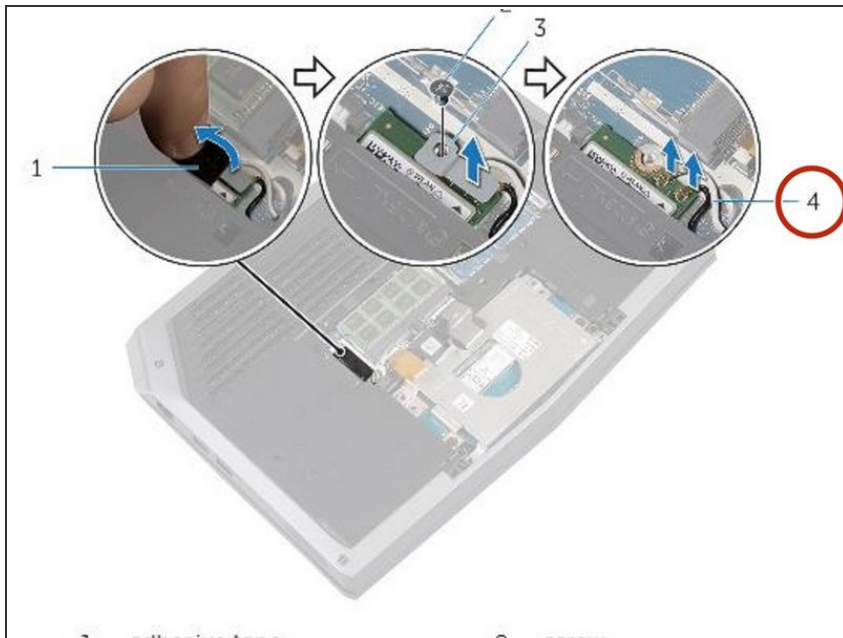
- Adhere the adhesive tapes that secure the antenna cables to the system board.

Step 53 — Turn the Computer Over



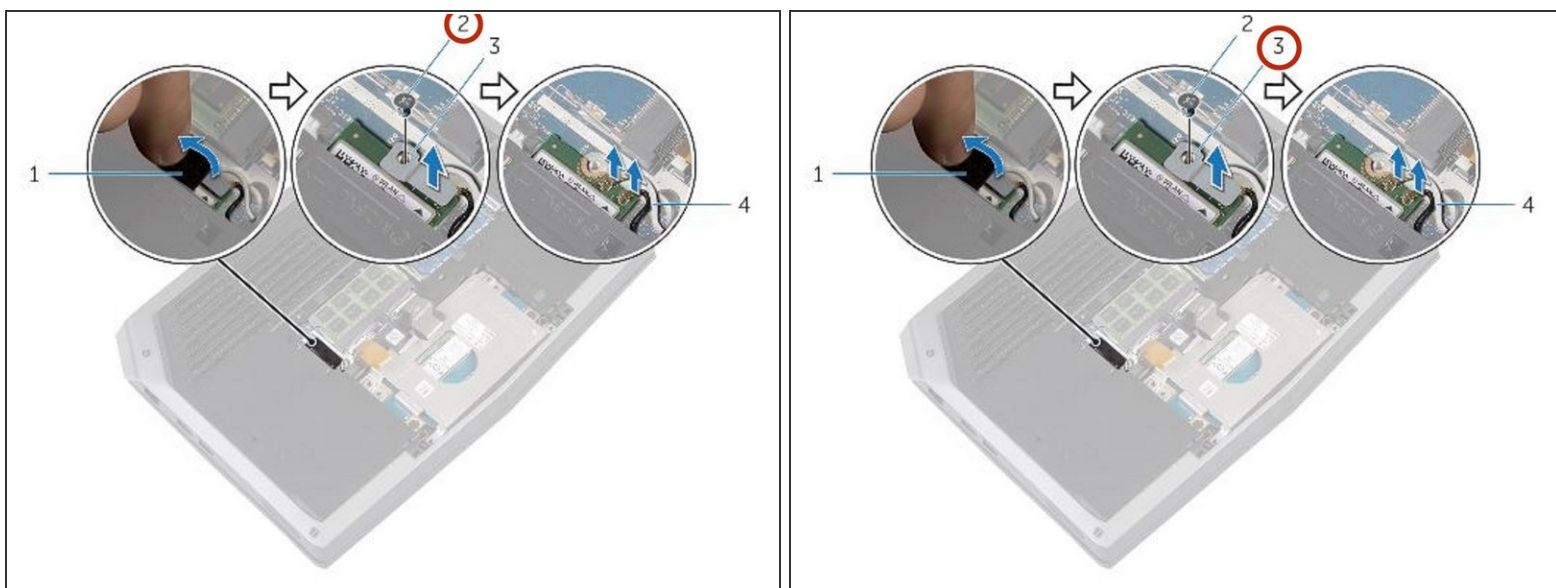
- Close the display and turn the computer over.

Step 54 — Connecting the Antenna Cables



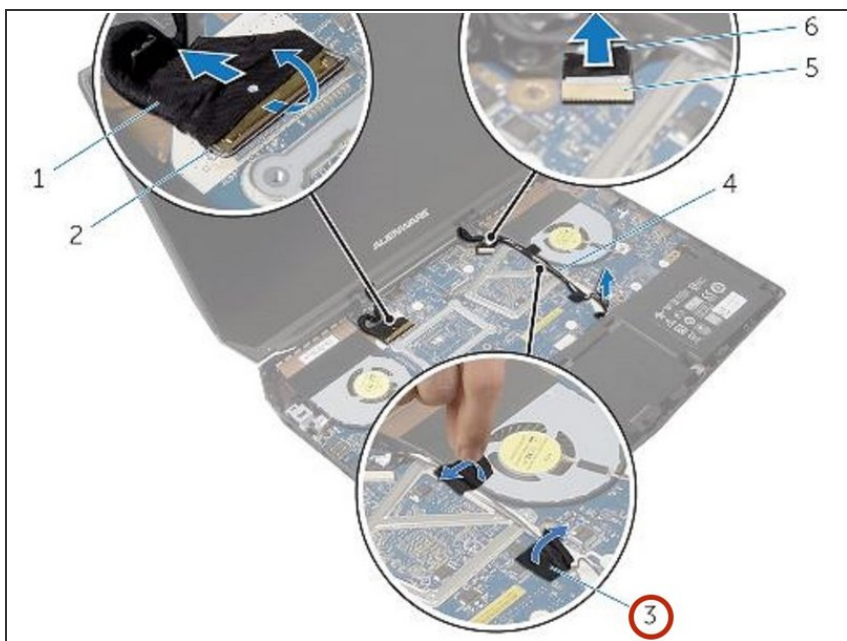
- Connect the antenna cables to the wireless card.

Step 55 — Replace the Screw



- Replace the screw that secures the wireless-card bracket to the wireless card.

Step 56 — Adhering the Adhesive Tape



- Adhere the adhesive tape to the wireless card.

Step 57 — Open the Display



- Turn the computer over and open the display.

Step 58 — Align the Screw Holes



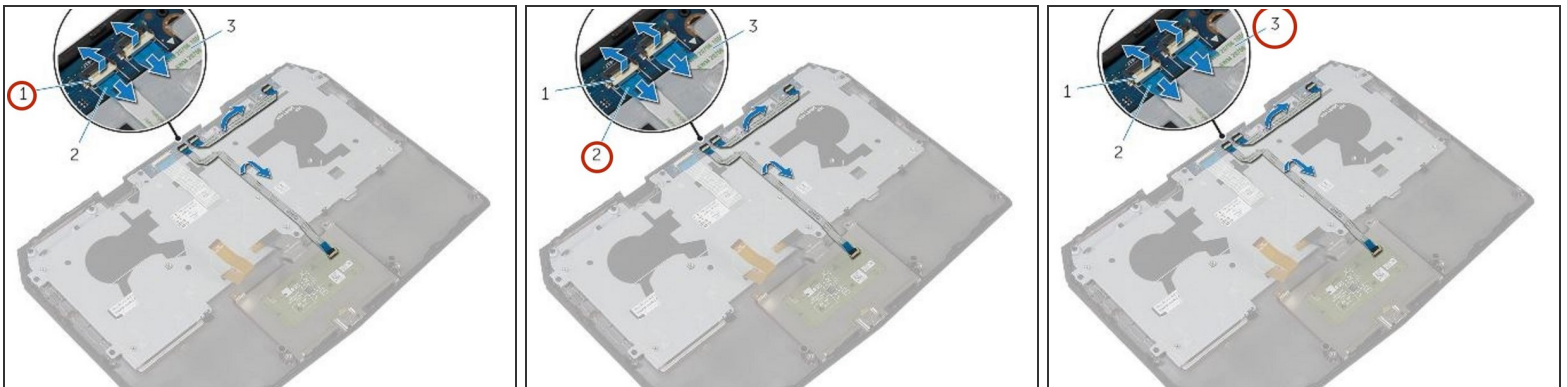
- Align the screw holes on the hinge caps with the screw holes on the display hinges.

Step 59 — Replace the Screws



- Replace the screws that secure the hinge caps to the display hinges.

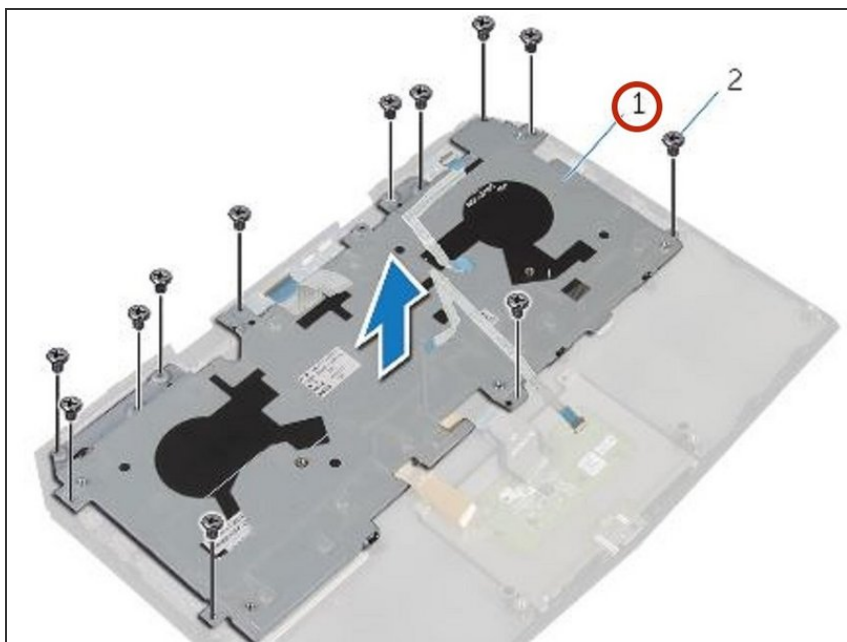
Step 60 — Disconnecting the Touchpad Cable



⚠ WARNING: Before working inside your computer, read the safety information that shipped with your computer and follow the steps in [Before Working Inside Your Computer](#). After working inside your computer, follow the instructions in [After Working Inside Your Computer](#).

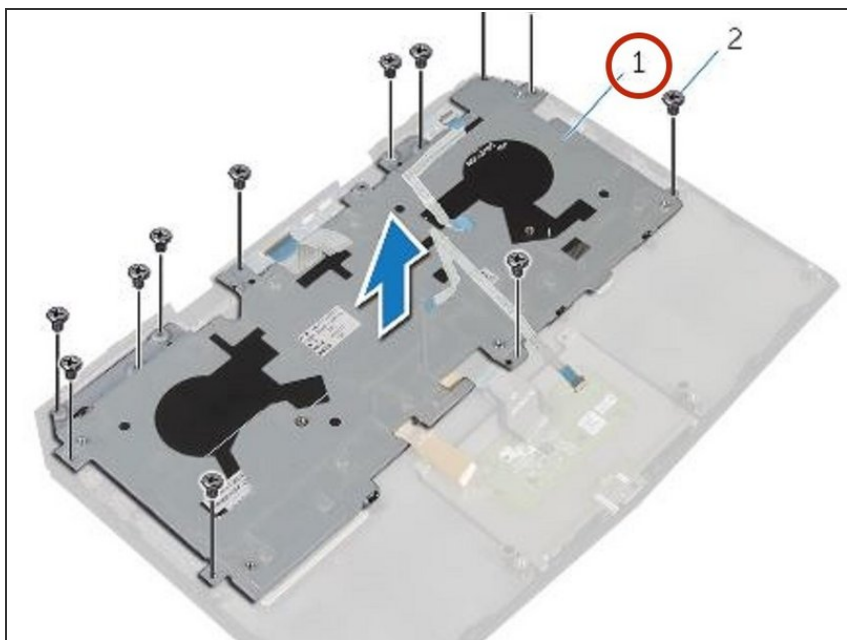
- Lift the connector latches and disconnect the touchpad cable and the status-light cable from the power-button board.

Step 61 — Peeling the Cables



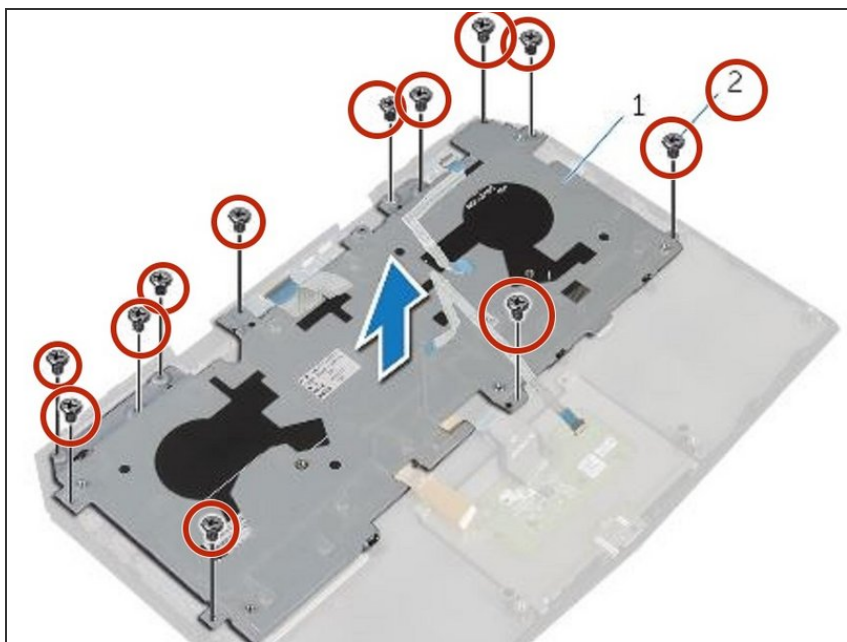
- Peel the touchpad cable and status-light cable off the keyboard bracket.

Step 62 — Removing the Keyboard Bracket



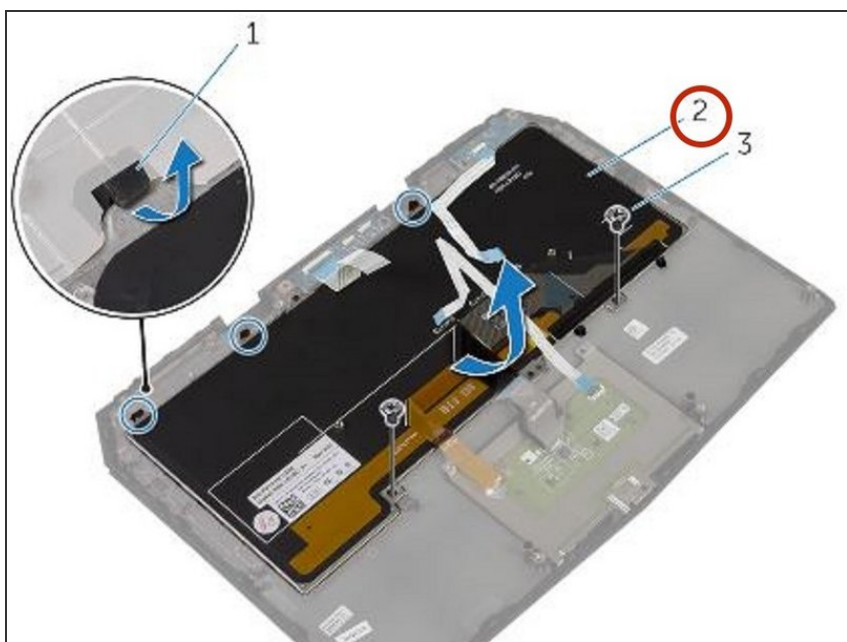
- Lift the keyboard bracket off the palm-rest assembly.

Step 63 — Remove the Screws



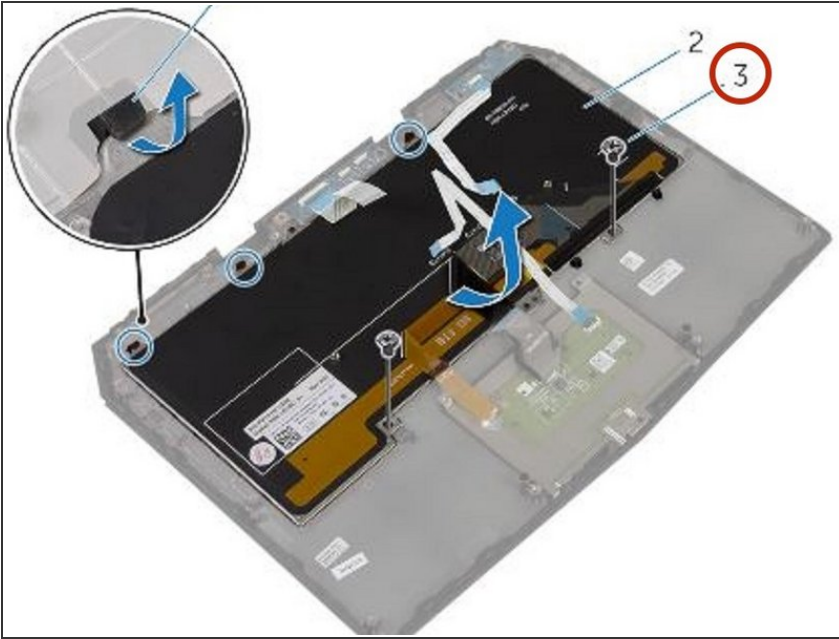
- Remove the screws that secure the keyboard to the palm-rest assembly.

Step 64 — Lifting the Keyboard



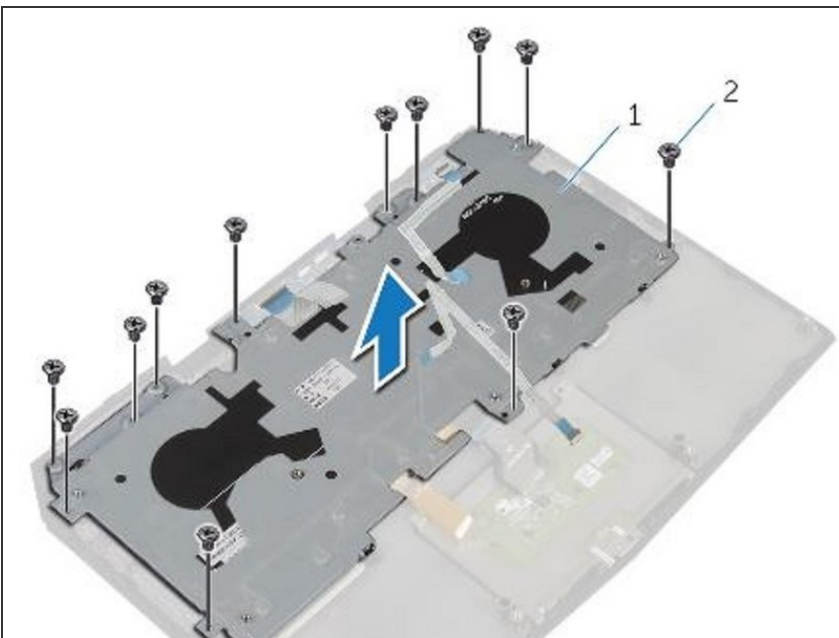
- Slide and lift the keyboard, along with the cables, off the palm-rest assembly.

Step 65 — Aligning the Screw Holes



- Align the screw holes on the **NEW** keyboard with the screw holes on the palm-rest assembly.

Step 66 — Replacing Screws



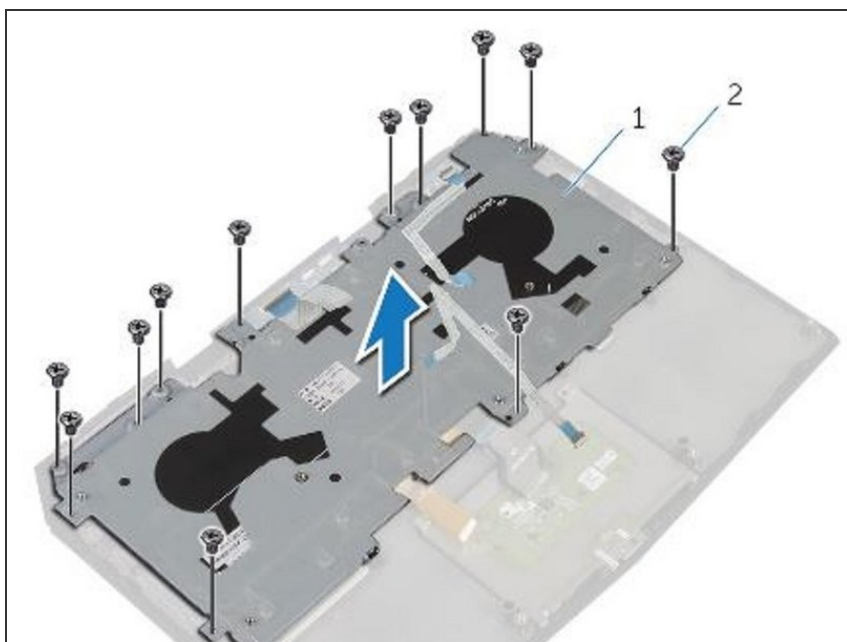
- Replace the screws that secure the keyboard to the palm-rest assembly.

Step 67 — Align the Screw Holes



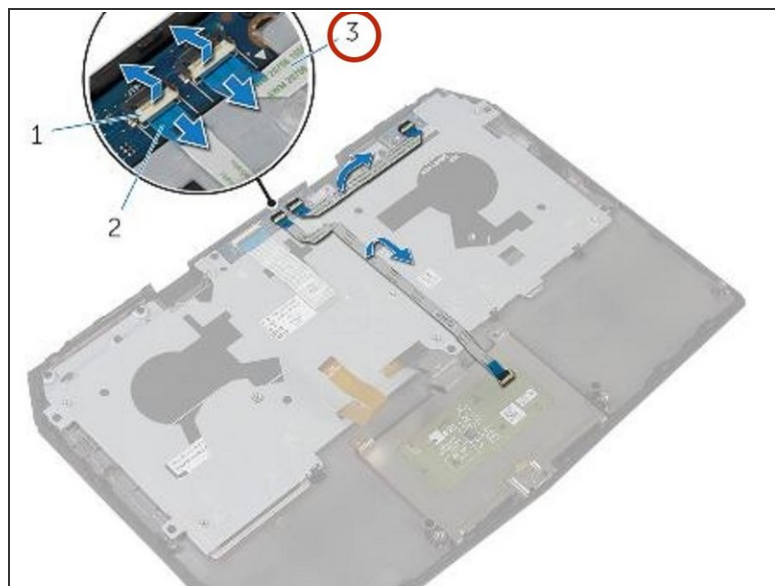
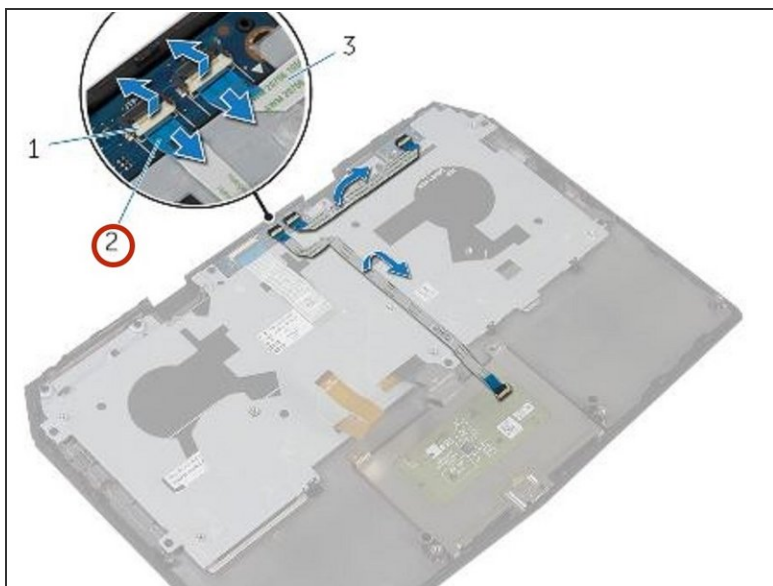
- Align the screw holes on the keyboard bracket with the screw holes on the palm-rest assembly.

Step 68 — Replace the Screws



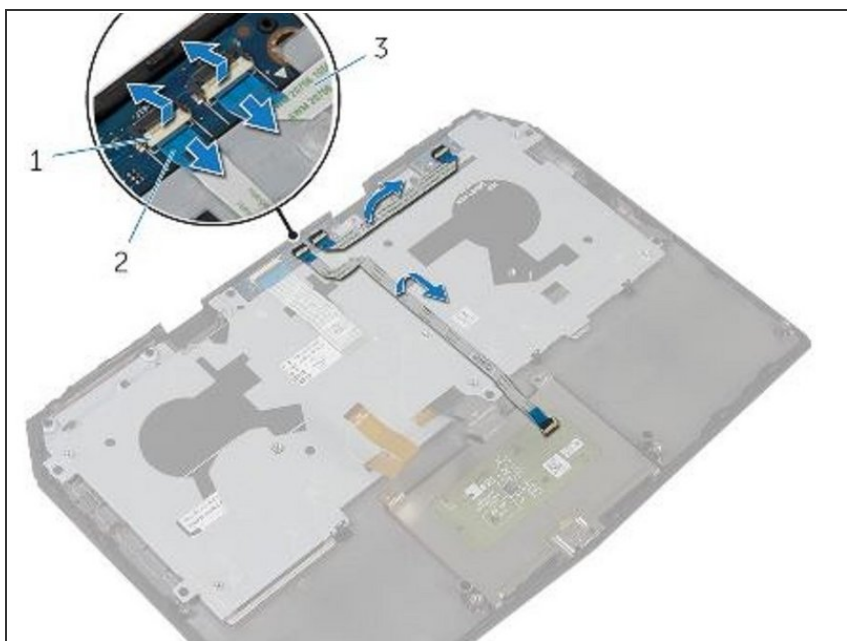
- Replace the screws that secure the keyboard bracket to the palm-rest assembly.

Step 69 — Adhering the Cables



- Adhere the touchpad cable and status-light cable to the keyboard bracket.

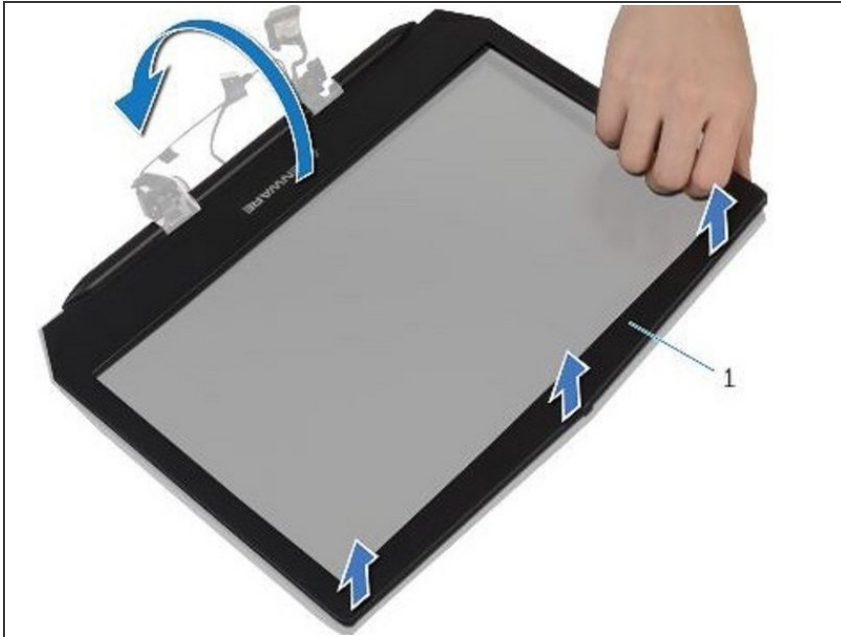
Step 70 — Sliding the Cables



- Slide the touchpad cable and the status-light cable into their respective connectors on the power-

button board and press down the latches to secure the cables.

Step 71 — Prying the Edges



⚠ WARNING: Before working inside your computer, read the safety information that shipped with your computer and follow the steps in [Before Working Inside Your Computer](#). After working inside your computer, follow the instructions in [After Working Inside Your Computer](#).

- Using your fingertips, carefully pry up the inside edges of the display bezel.

Step 72 — Lift the Display Bezel



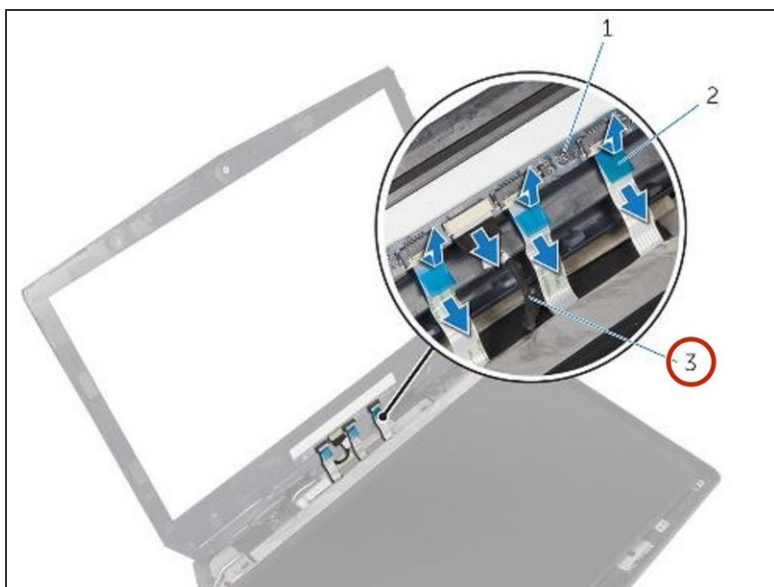
- Carefully lift the display bezel and turn it over.

Step 73 — Lift the Connector Latches



- Lift the connector latches and disconnect the display-board cables from the logo board.

Step 74 — Disconnect the Logo-Board Cable



- Disconnect the logo-board cable from the logo board.

Step 75 — Connecting the Logo-Board Cable



- Connect the logo-board cable to the logo board.

Step 76 — Slide the Display-Board Cables



- Slide the display-board cables to their respective connectors on the logo board and press down the latches to secure the cables.

Step 77 — Turn Over the Display Bezel



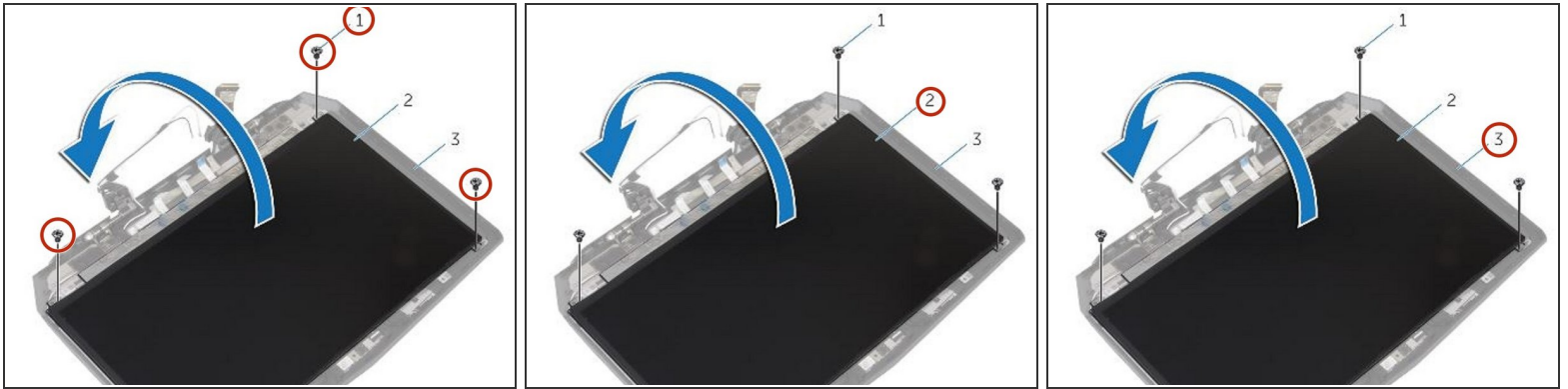
- Turn the **NEW** display bezel over.

Step 78 — Align the Display Bezel



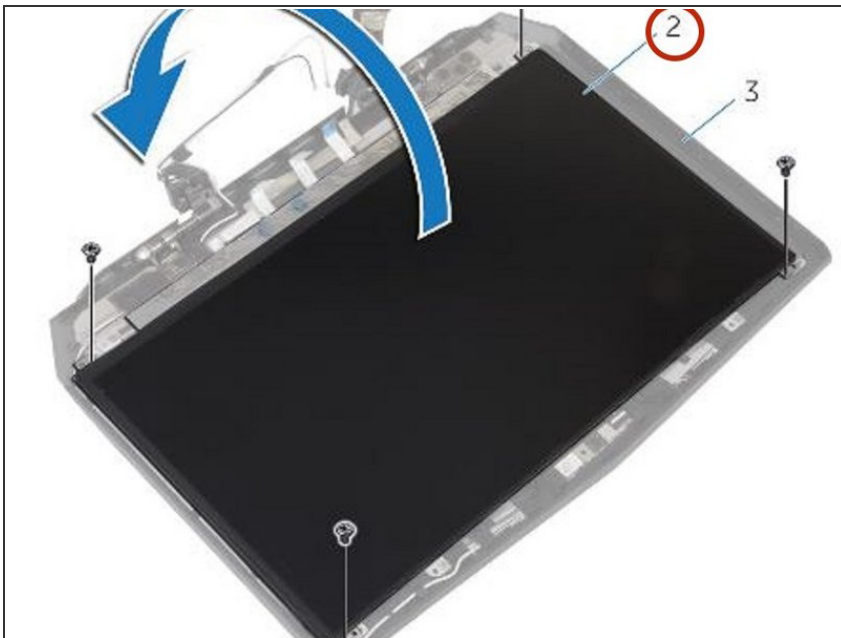
- Align the display bezel with the display back-cover and gently snap the display bezel into place.

Step 79 — Remove the Screws



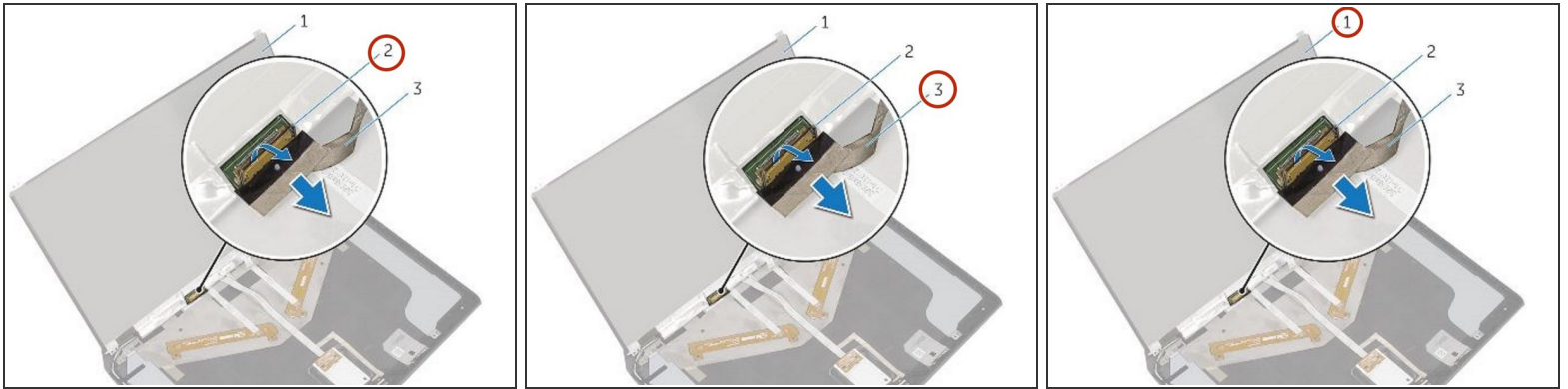
- Remove the screws that secure the display panel to the display back-cover.

Step 80 — Lift the Display Panel



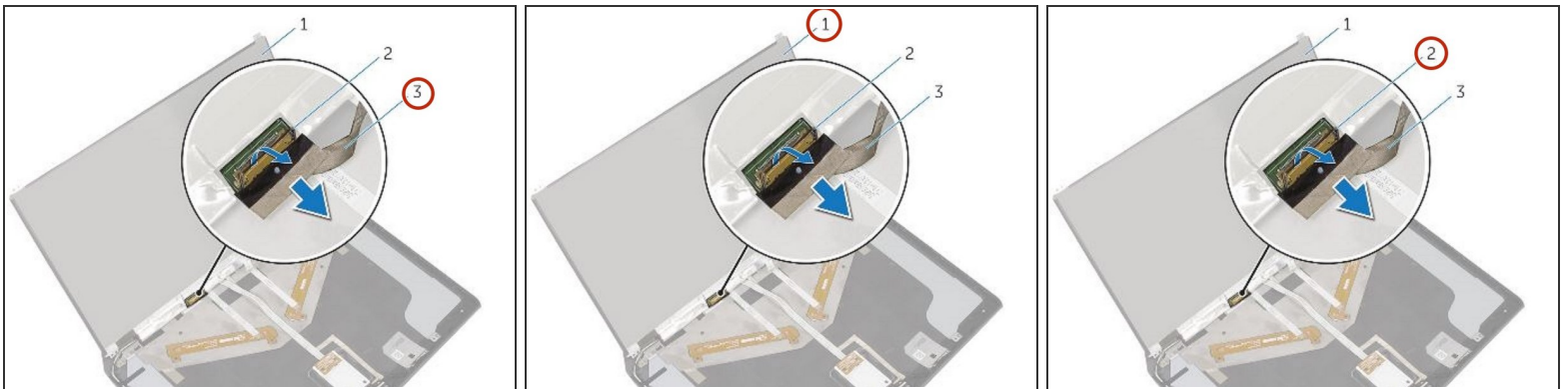
- Gently lift the display panel and turn it over.

Step 81 — Lift the Connector Latch



- Lift the connector latch and disconnect the display cable from the display panel.

Step 82 — Securing the Cable



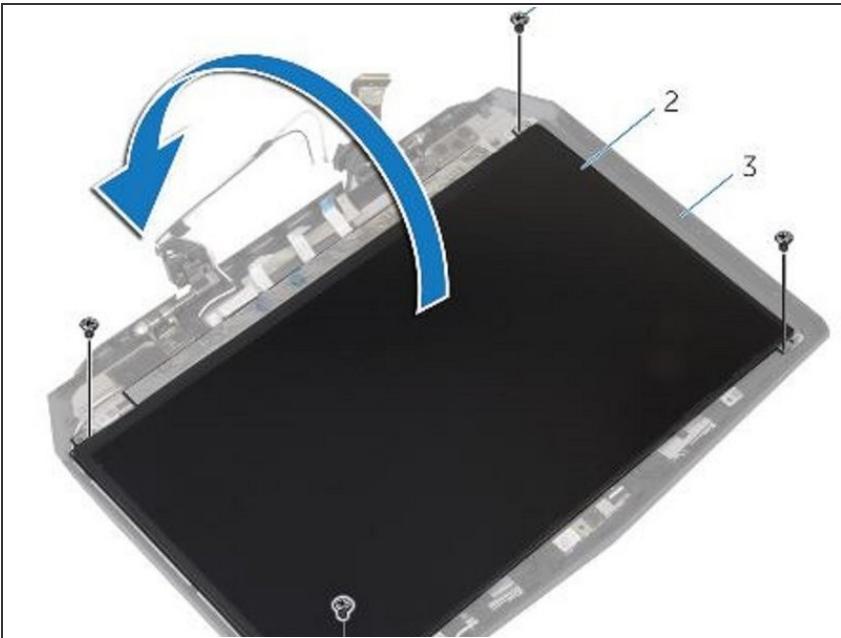
- Connect the display cable to the **NEW** display panel and press down on the connector latch to secure the cable.

Step 83 — Turn the Display Panel



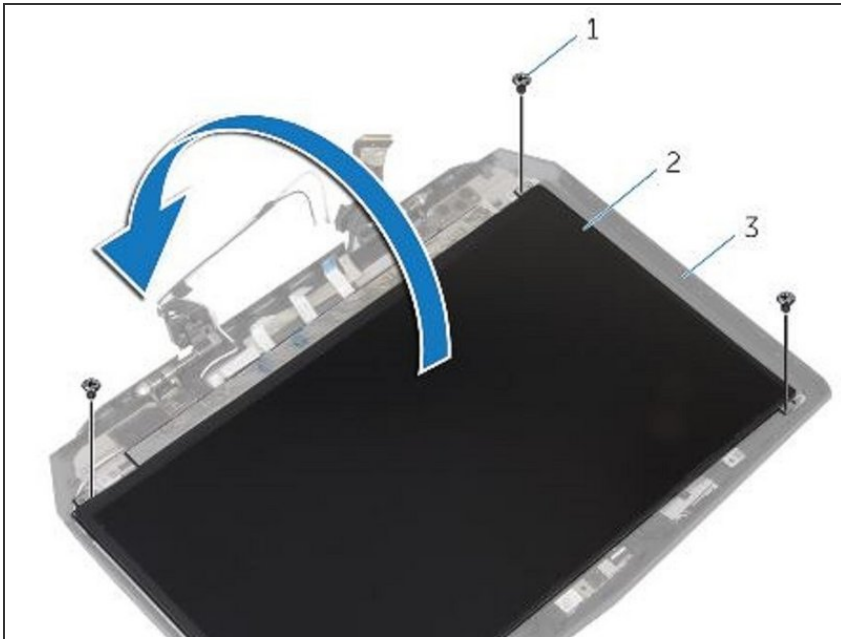
- Turn the display panel over.

Step 84 — Align the Screw Holes



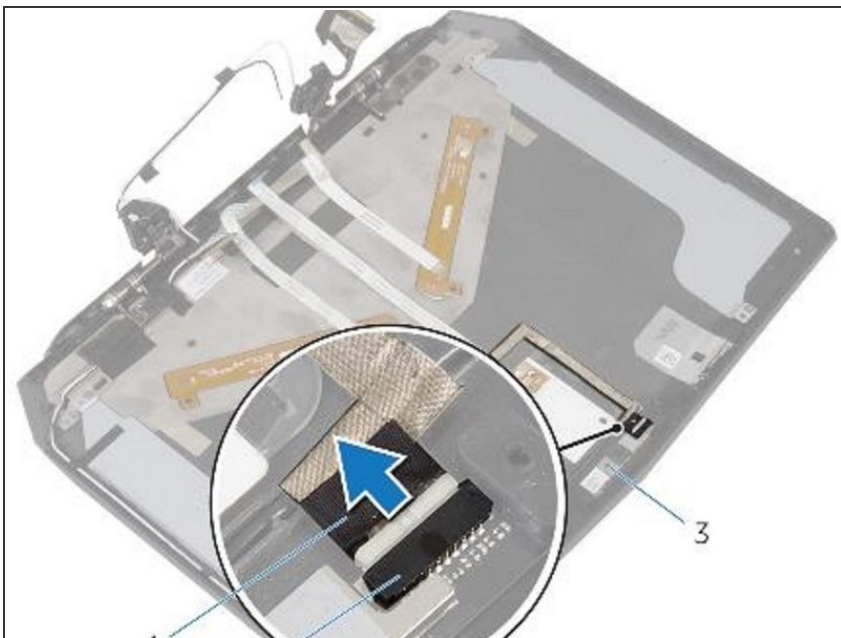
- Align the screw holes on the display panel with the screw holes on the display back-cover.

Step 85 — Replace the Screws



- Replace the screws that secure the display panel to the display back-cover.

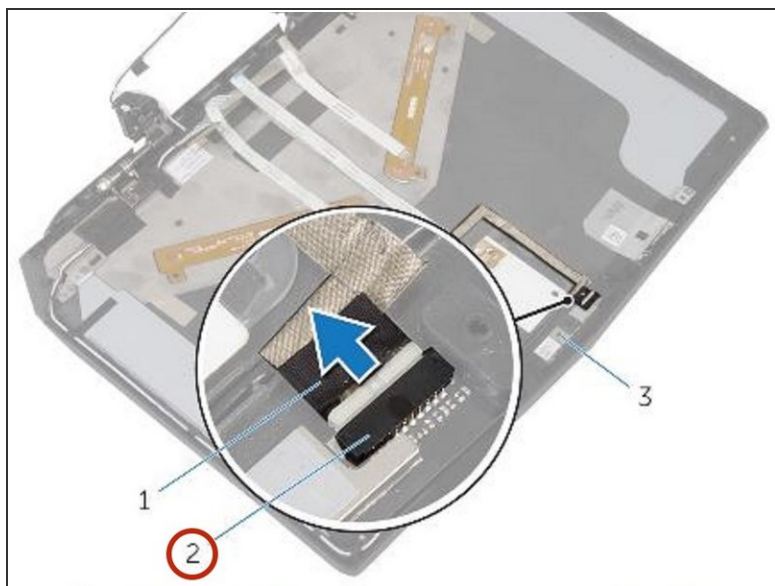
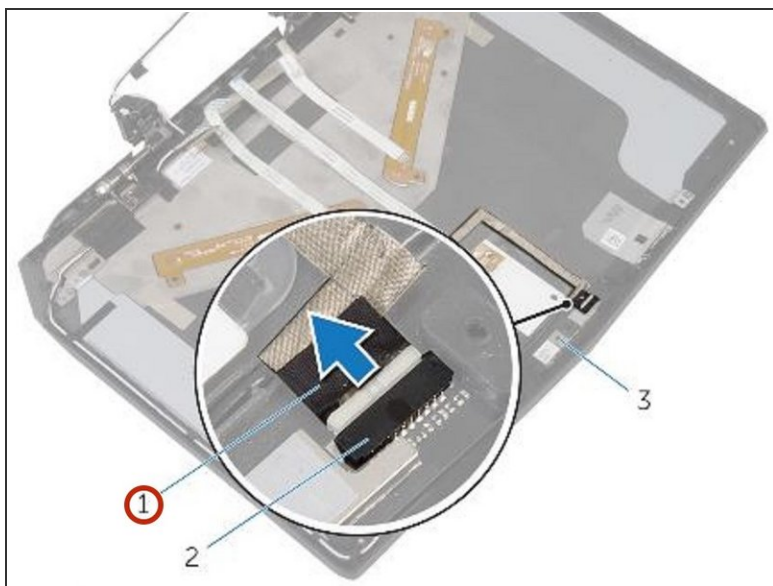
Step 86 — Place the Display



- ⚠ **WARNING:** Before working inside your computer, read the safety information that shipped with your computer and follow the steps in [Before Working Inside Your Computer](#). After working inside your computer, follow the instructions in [After Working Inside Your Computer](#).

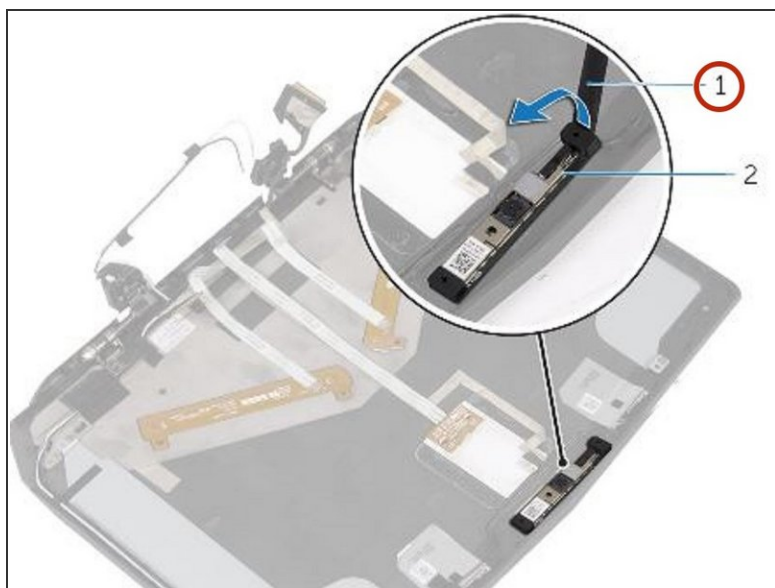
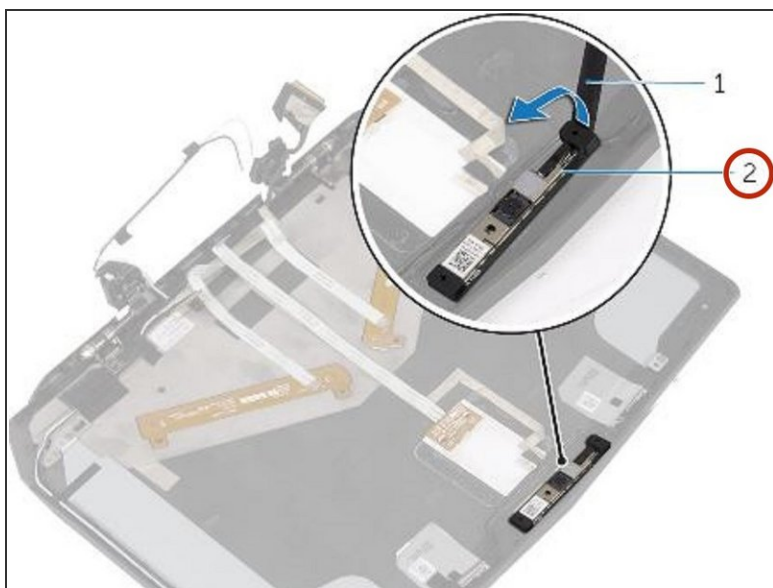
- Place the display back-cover assembly on a flat surface.

Step 87 — Disconnecting the Camera Cable



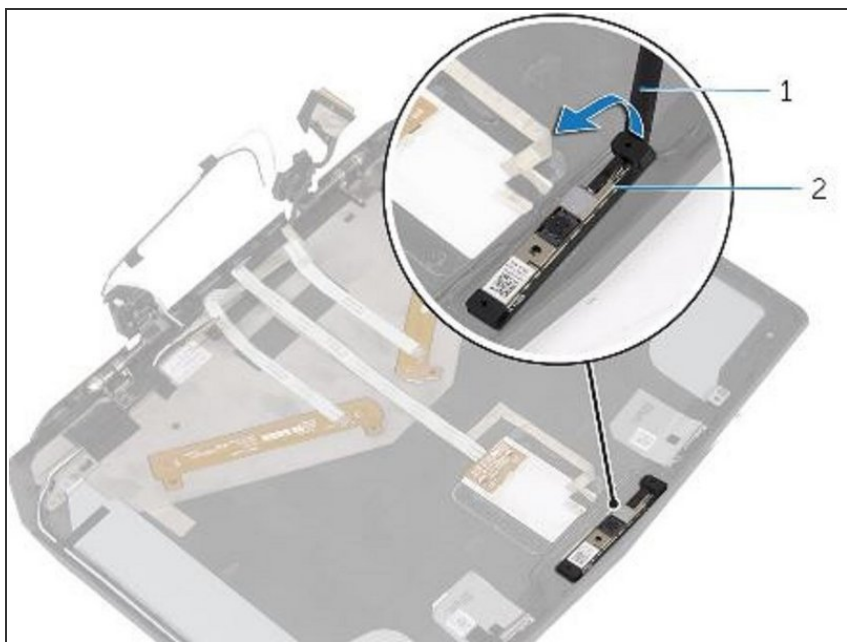
- Disconnect the camera cable from the camera module.

Step 88 — Pry the Camera Module



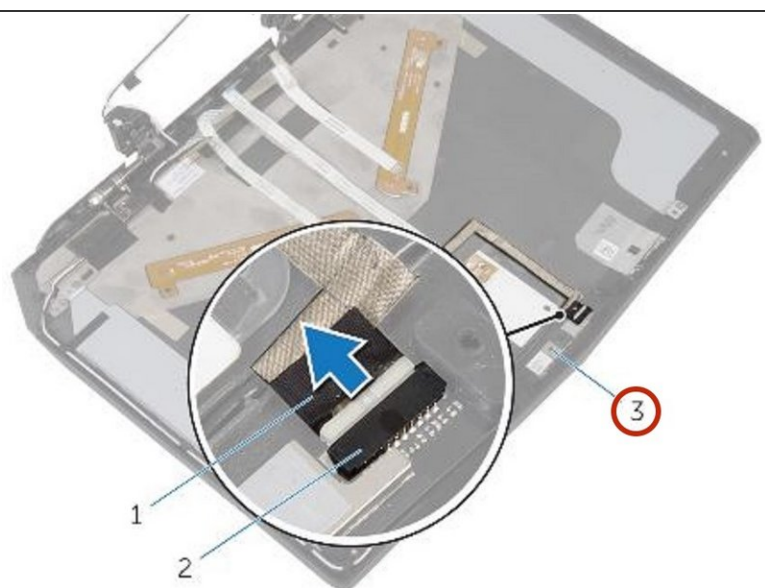
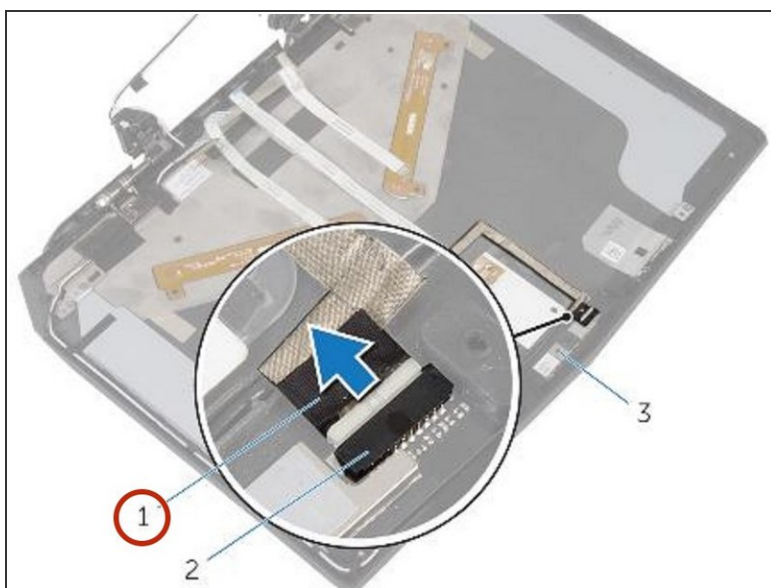
- Using a plastic scribe, pry the camera module off the display back-cover.

Step 89 — Snapping the Module in Place



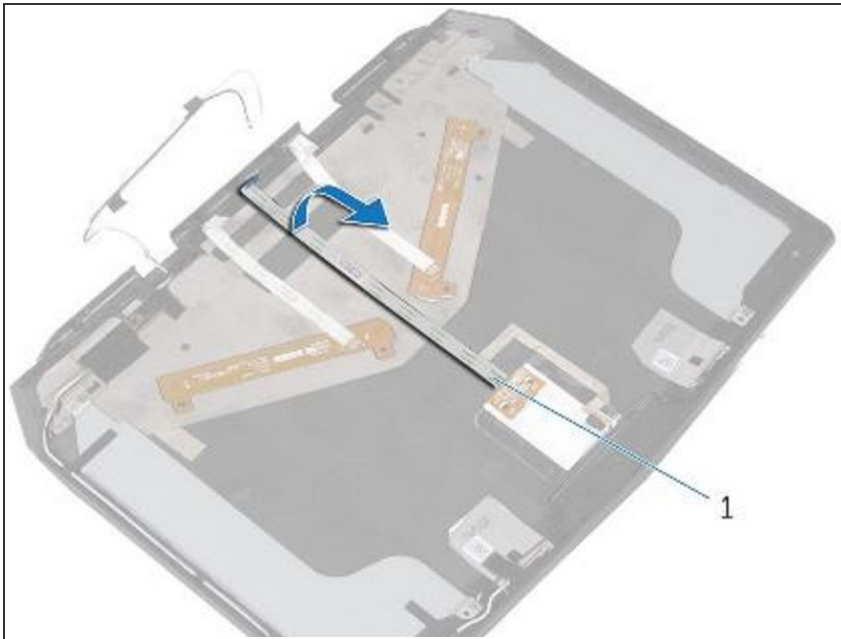
- Using the alignment posts place the **NEW** camera module on the display back-cover and snap it into place.

Step 90 — Connect the Camera Cable



- Connect the camera cable to the camera module.

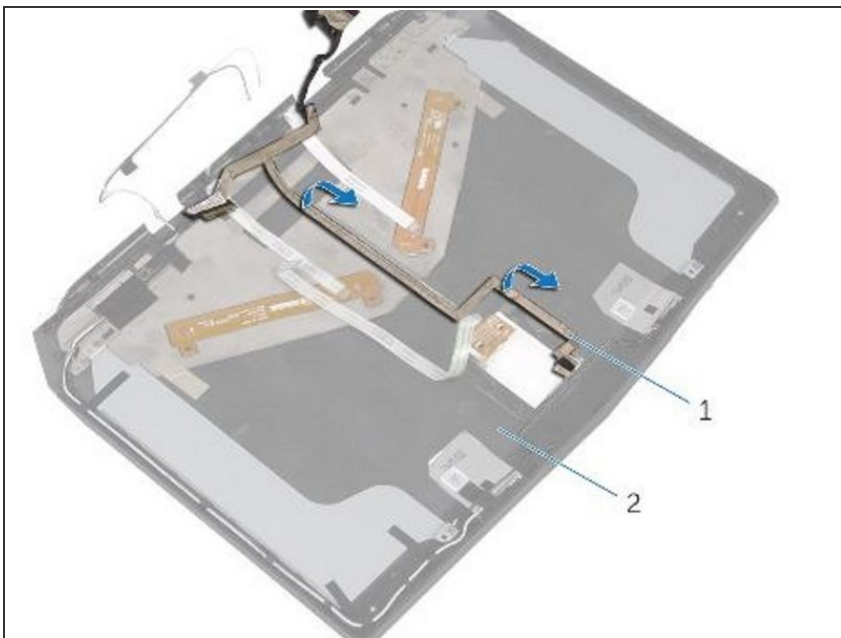
Step 91 — Peeling the Display-Board Cable



⚠ WARNING: Before working inside your computer, read the safety information that shipped with your computer and follow the steps in [Before Working Inside Your Computer](#). After working inside your computer, follow the instructions in [After Working Inside Your Computer](#).

- Peel the display-board cable to access the camera cable.

Step 92 — Display Cable Routing



- Note the display cable routing and peel the camera cable off the display back-cover.

Step 93 — Placing the Display Back Cover



- Place the **NEW** display back-cover on a flat surface.

Step 94 — Adhering the Cable



- Adhere the display-board cable and the camera cable to the display back-cover.

To reassemble your device, follow these instructions in reverse order.