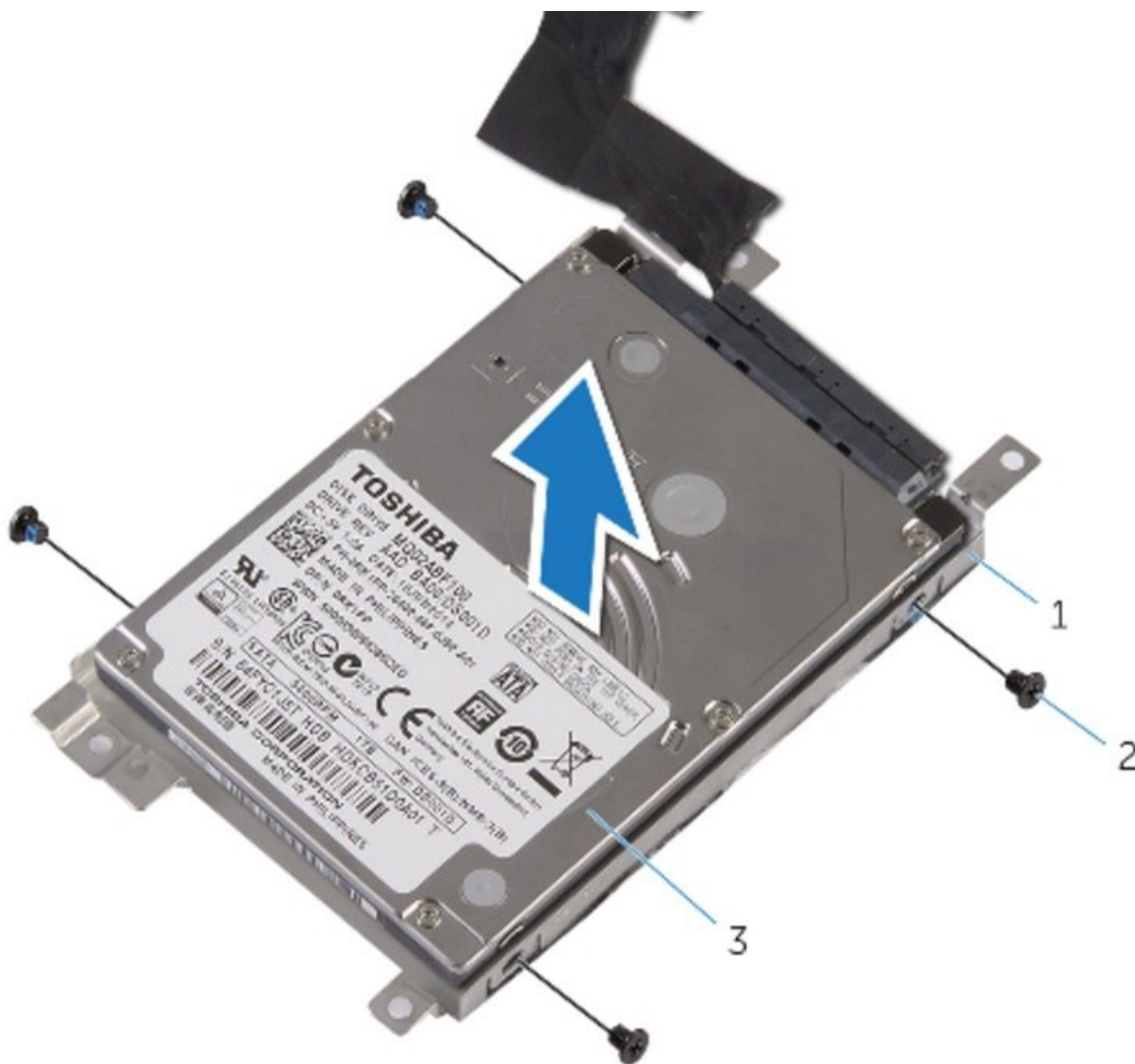




Dell Alienware 13 Hard Drive Replacement

In this tutorial, we will be removing and replacing the Dell Alienware 13's hard drive.

Written By: Terrence15



INTRODUCTION

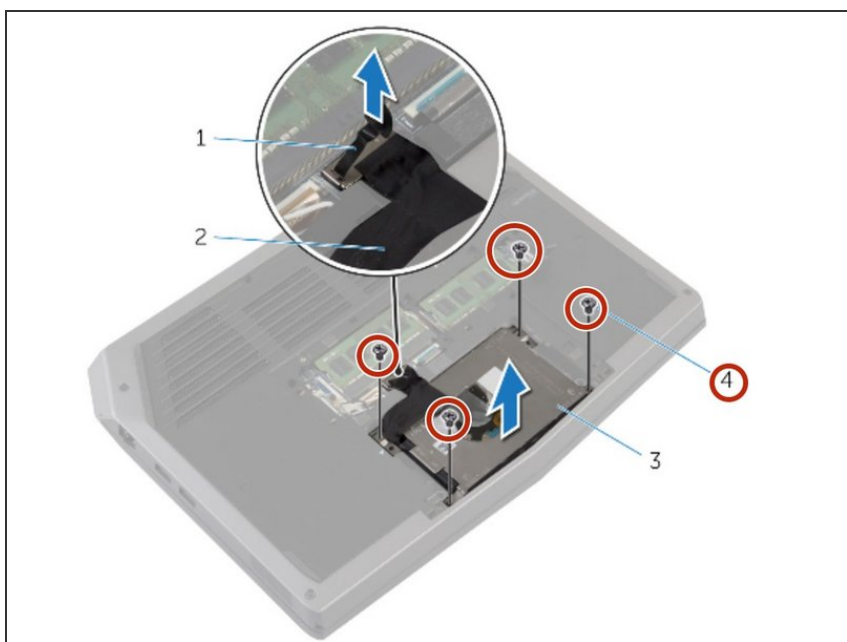
In this guide, we will be showing you how to remove and replace the Hard Drive.



TOOLS:

- [Phillips #0 Screwdriver](#) (1)
-

Step 1 — WARNING



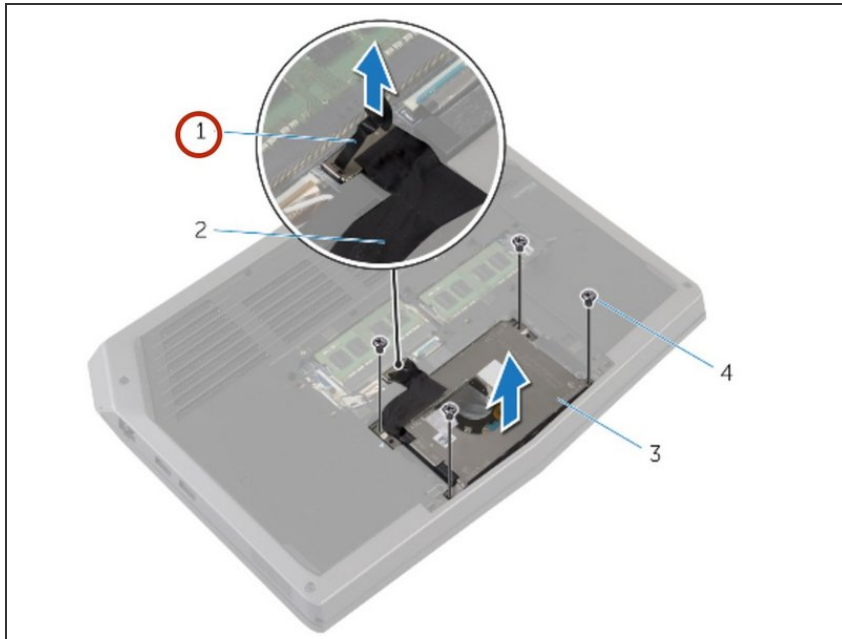
⚠ WARNING: Before working inside your computer, read the safety information that shipped with your computer and follow the steps in [Before Working Inside Your Computer](#). After working inside your computer, follow the instructions in [After Working Inside Your Computer](#).

⚠ CAUTION: Hard drives are fragile. Exercise care when handling the hard drive.

⚠ To avoid data loss, do not remove the hard drive while the computer is in sleep or on state.

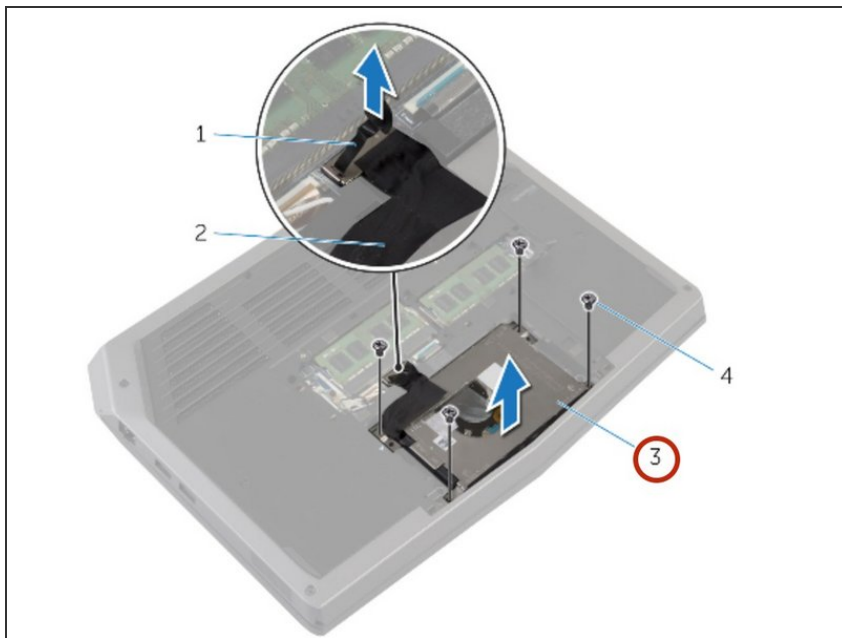
- Remove the screws that secure the hard-drive assembly to the computer base.

Step 2 — Disconnecting Hard Drive Cable



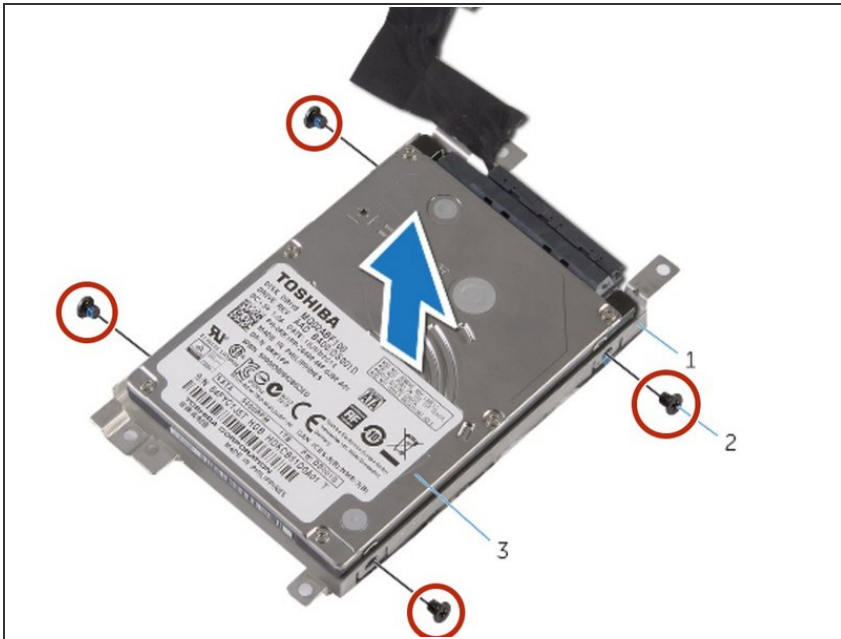
- Using the pull tab, disconnect the hard-drive cable from the system board.

Step 3 — Lifting Hard Drive Assembly



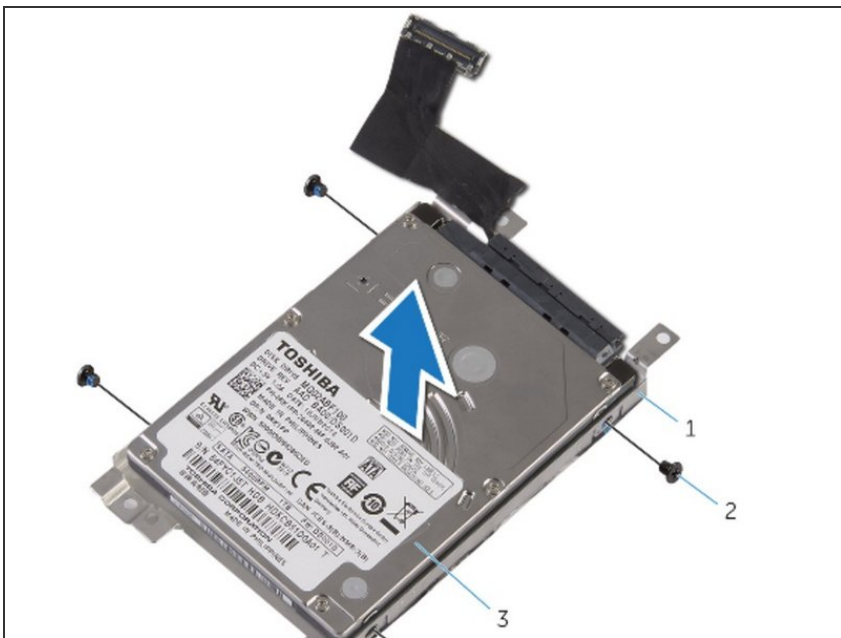
- Lift the hard-drive assembly off the computer base.

Step 4 — Removing Hard-Drive Screws



- Remove the screws that secure the hard-drive bracket to the hard drive.

Step 5 — Lifting the Drive



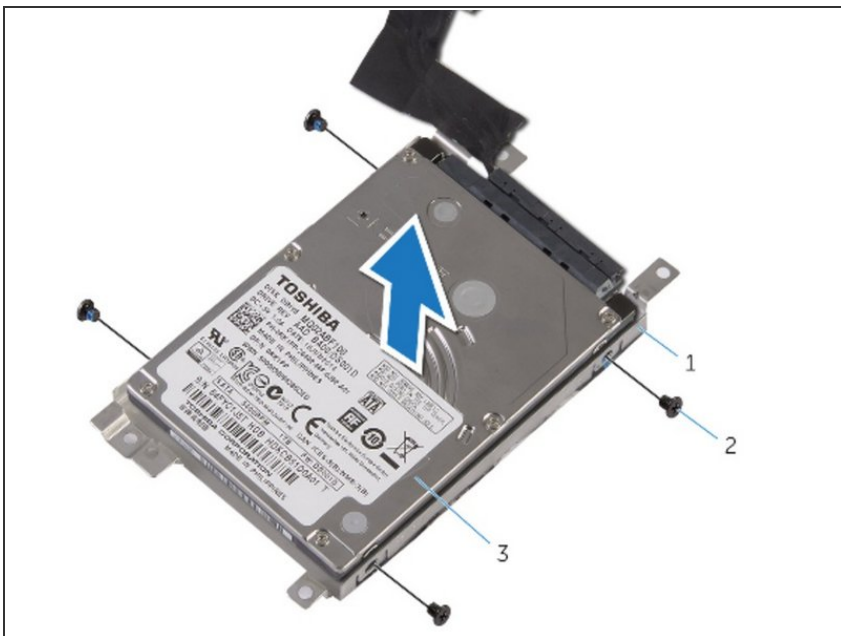
- Lift the hard drive off the hard-drive bracket.

Step 6 — Disconnect Interposer



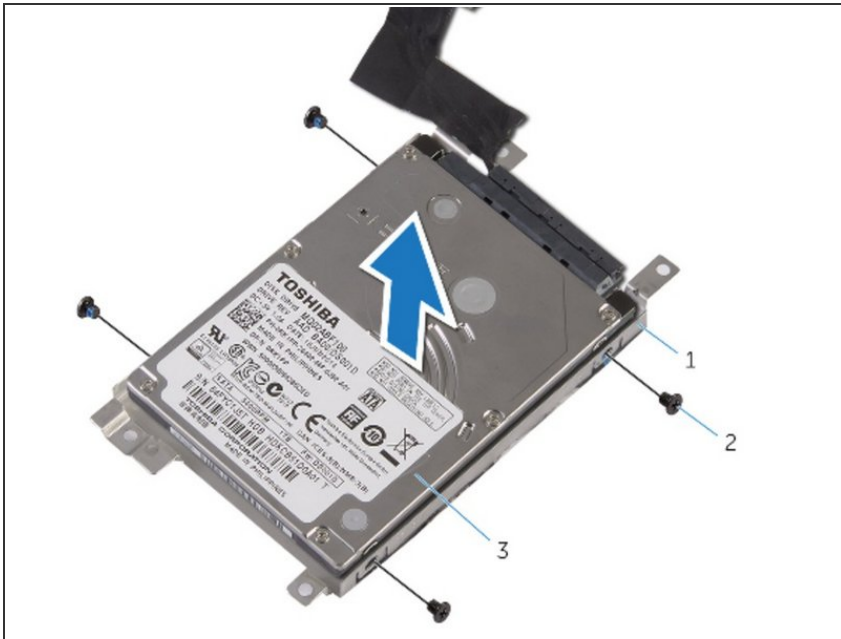
- Disconnect the interposer from the hard drive.

Step 7 — Connect the Interposter



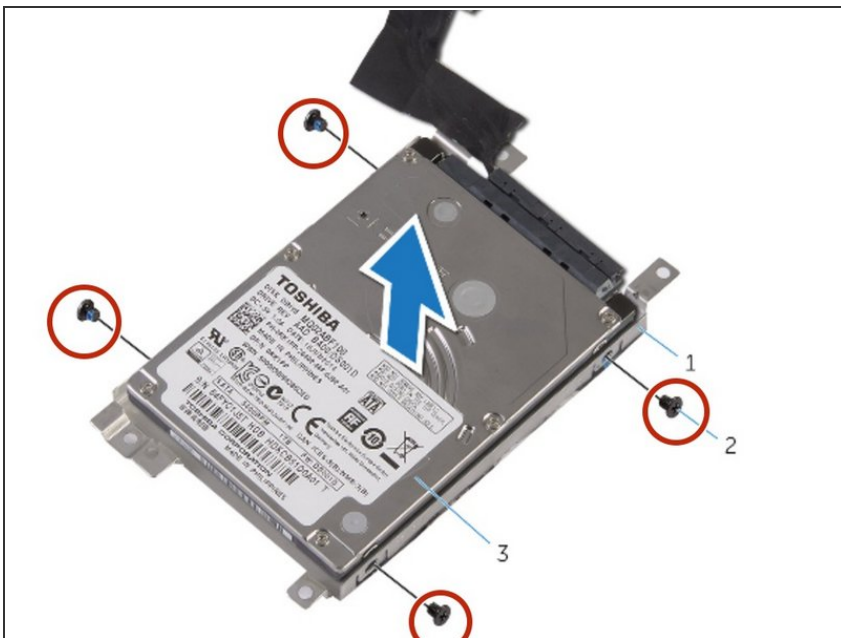
- Connect the **new** interposter to the **new** hard drive.

Step 8 — Screw Holes



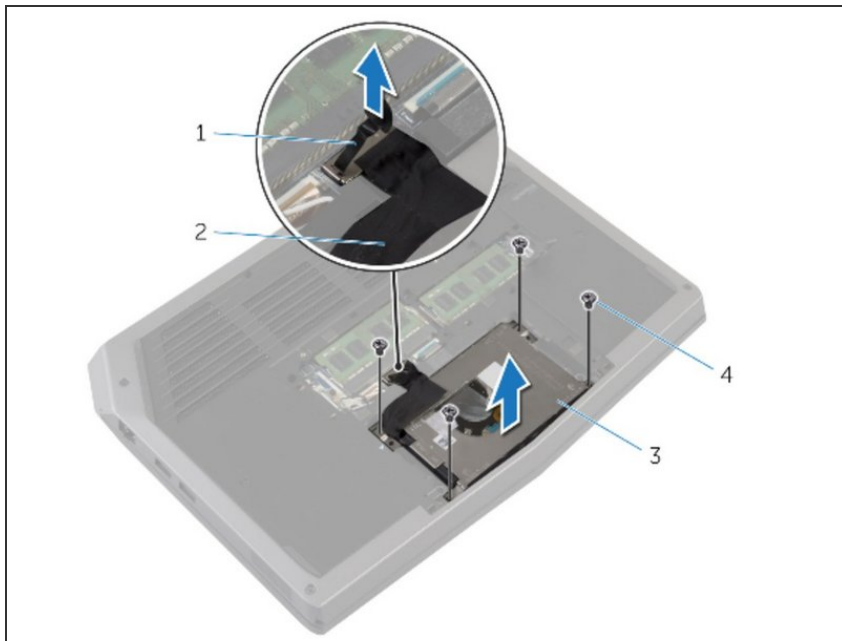
- Align the screw holes on the hard-drive bracket with the screw holes on the hard-drive assembly.

Step 9 — Screw Replacement



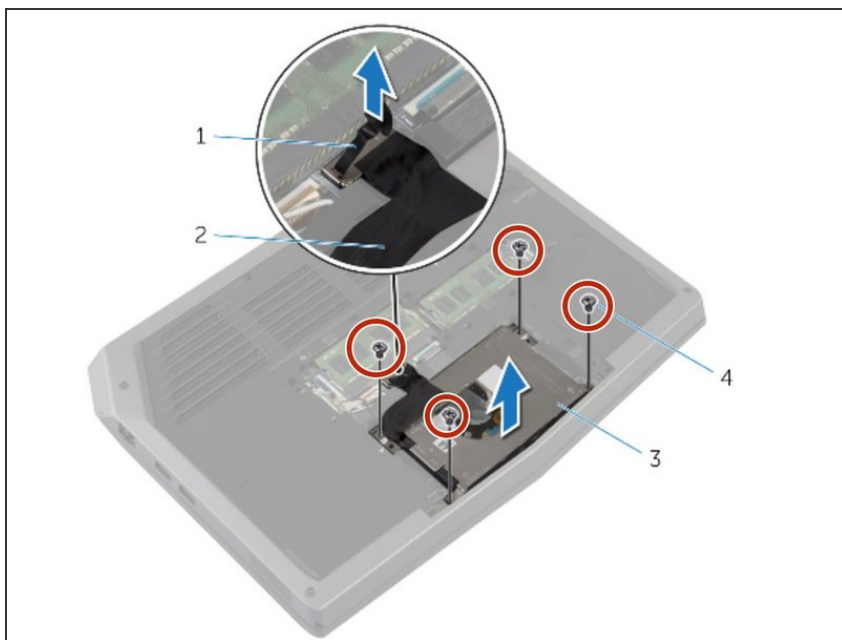
- Replace the screws that secure the hard-drive bracket to the hard-drive assembly.

Step 10 — Align Screw Holes



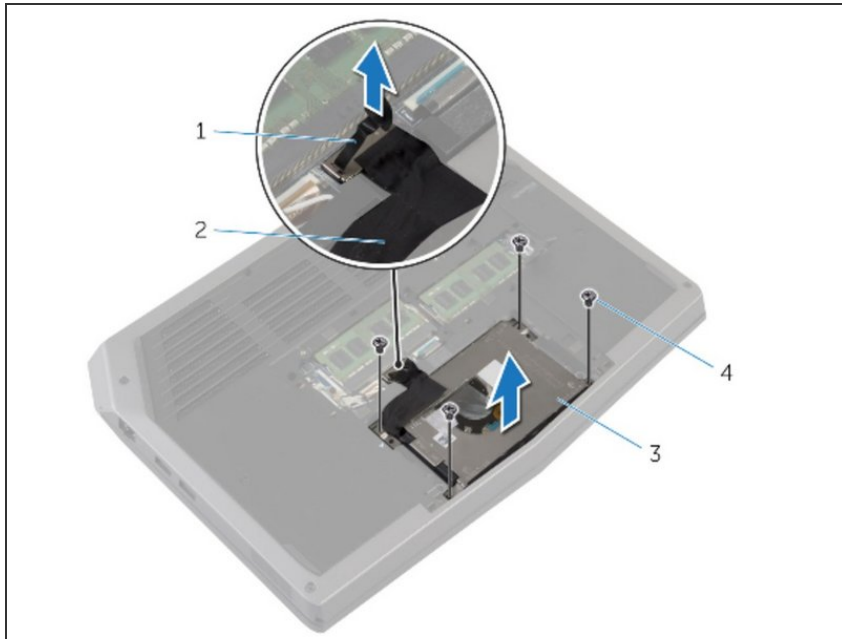
- Align the screw holes on the hard-drive assembly to the computer base.

Step 11 — Replace the Screws



- Replace the screws that secure the hard-drive assembly to the computer base.

Step 12 — Connect Drive



- Connect the hard-drive cable to the system board.

To reassemble your device, follow these instructions in reverse order.