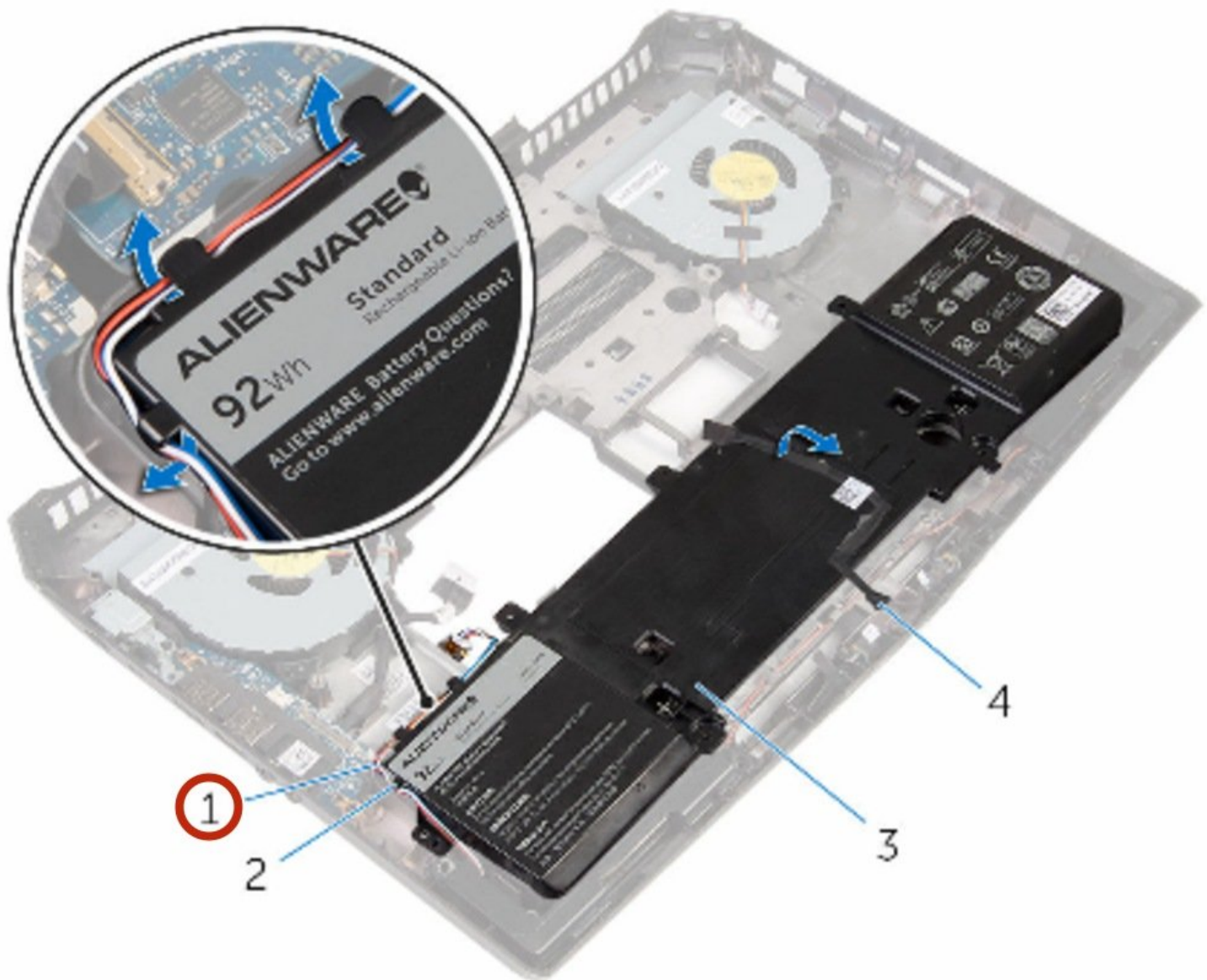




Dell Alienware 15 R2 Battery Replacement

Written By: Terrence15



INTRODUCTION

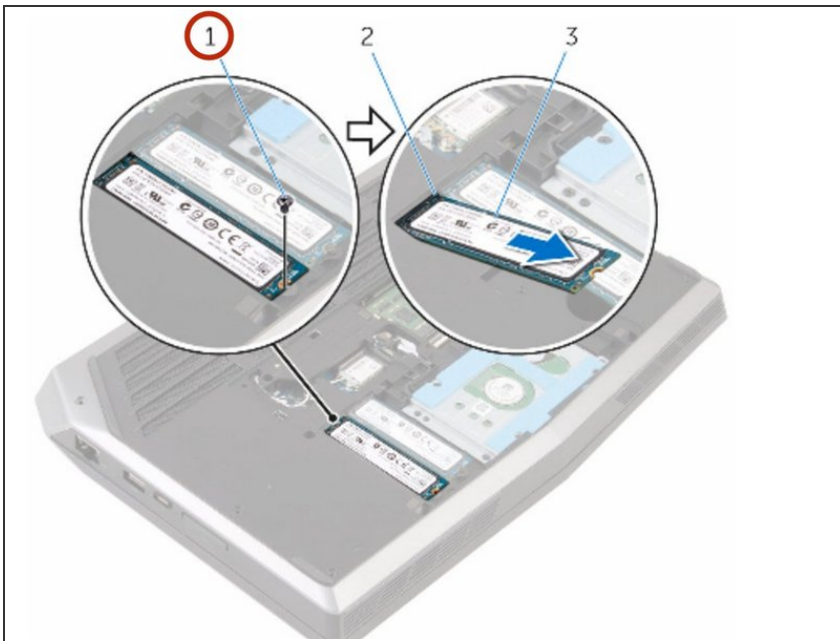
In this guide, we will show you how to remove and replace the Battery.



TOOLS:

- [Pro Tech Toolkit](#) (1)
-

Step 1 — Remove the Screw



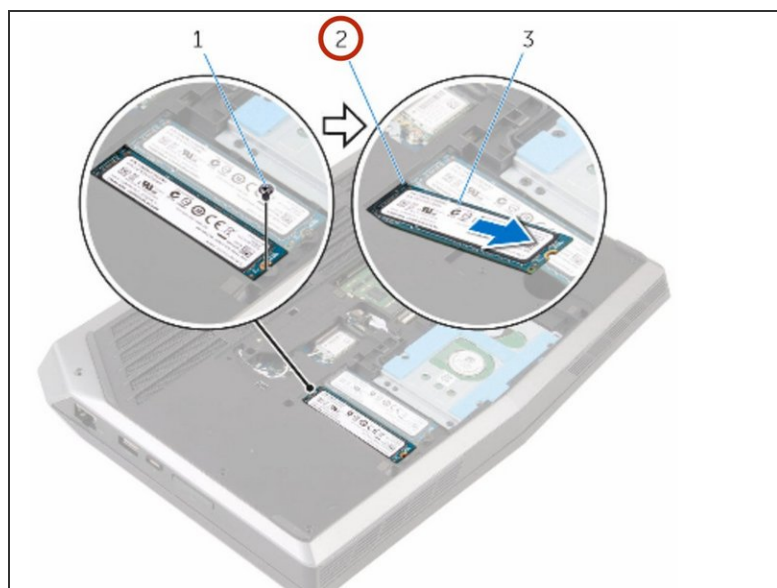
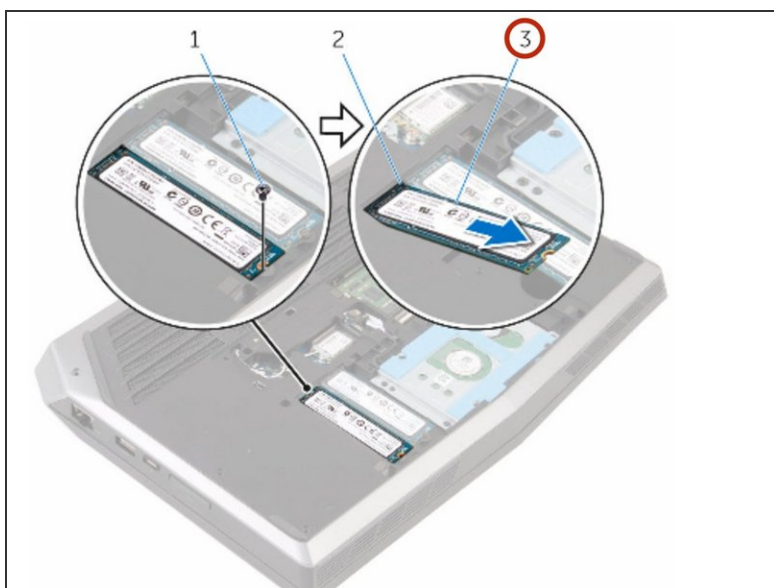
⚠ WARNING: Before working inside your computer, read the safety information that shipped with your computer and follow the steps in [Before Working Inside Your Computer](#). After working inside your computer, follow the instructions in [After Working Inside Your Computer](#).

⚠ CAUTION: Solid-state drives are fragile. Exercise care when handling the hard drive.

⚠ CAUTION: To avoid data loss, do not remove the solid-state drive while the computer is in sleep or on state.

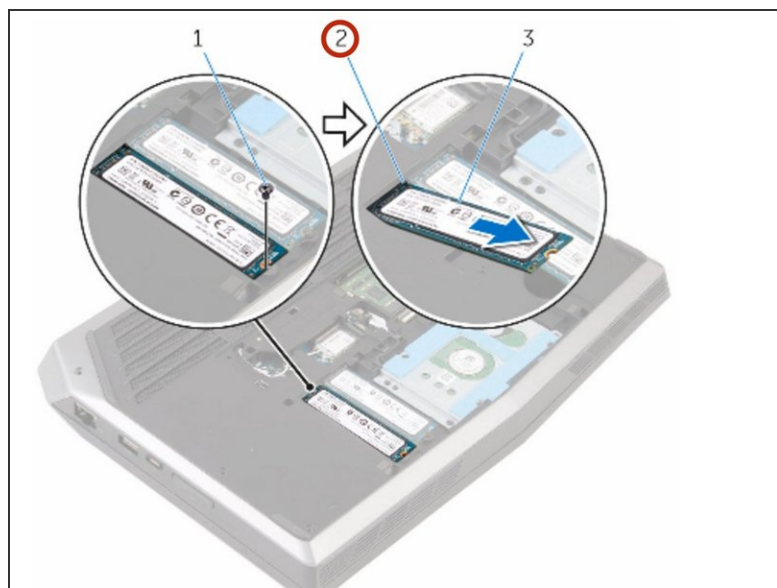
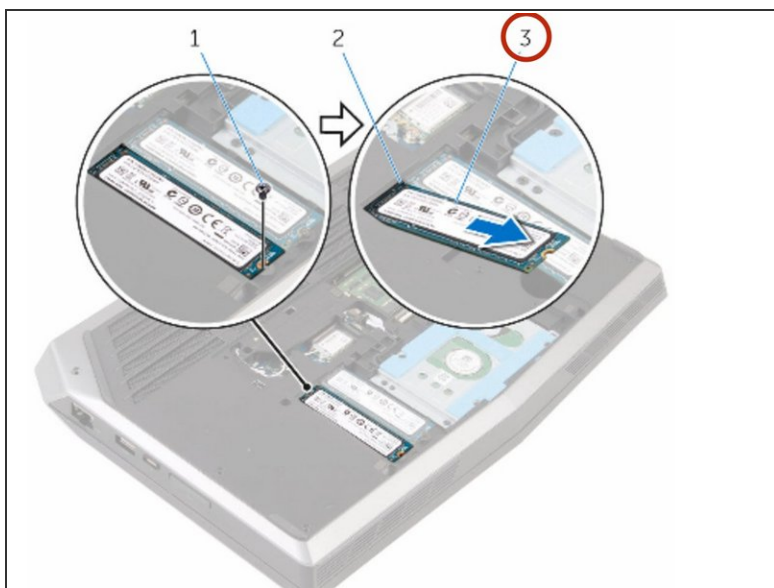
- Remove the screw that secures the solid-state drive to the computer base.

Step 2 — Removing the Solid-State Drive



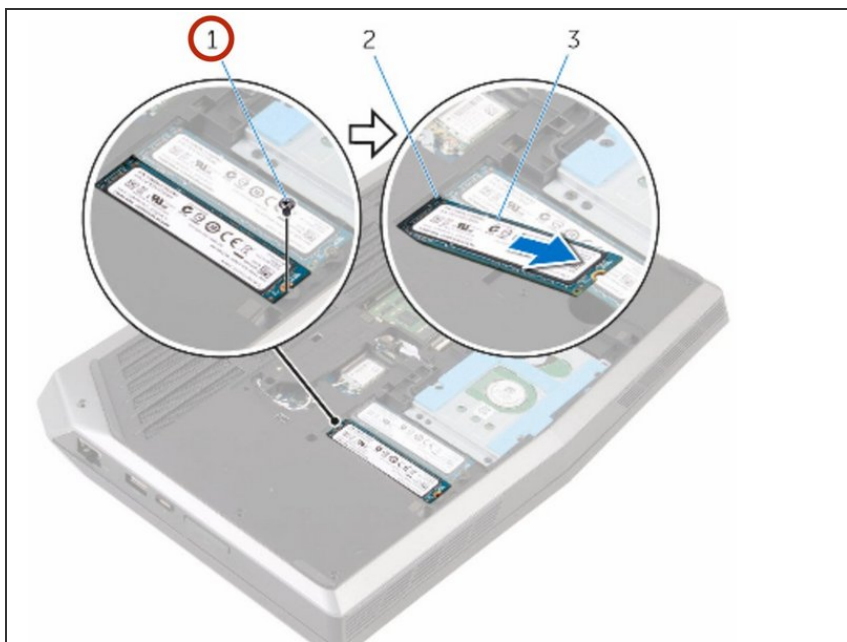
- Slide and remove the solid-state drive from the solid-state drive slot.

Step 3 — Sliding the Solid-State Drive



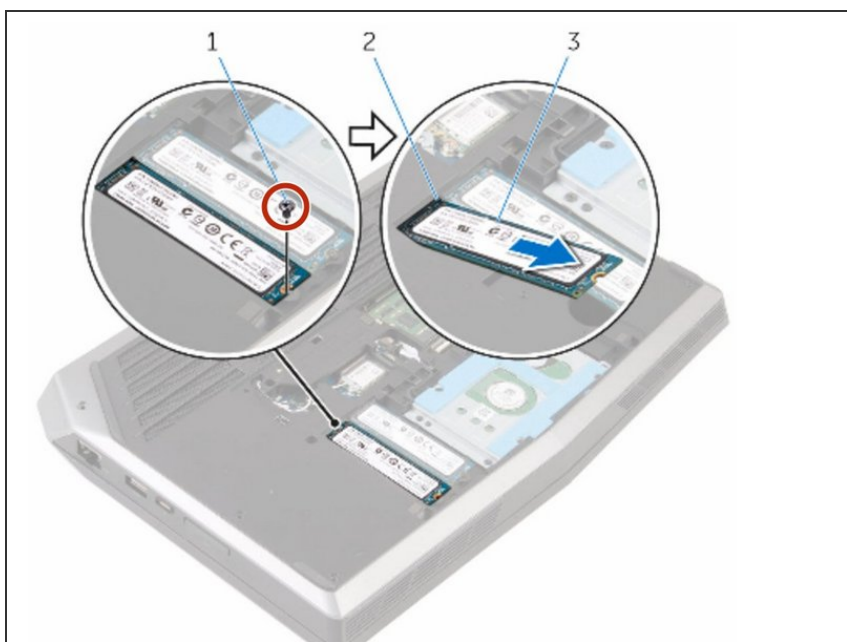
- Slide the **NEW** solid-state drive into the solid-state drive slot.

Step 4 — Align the Screw Hole



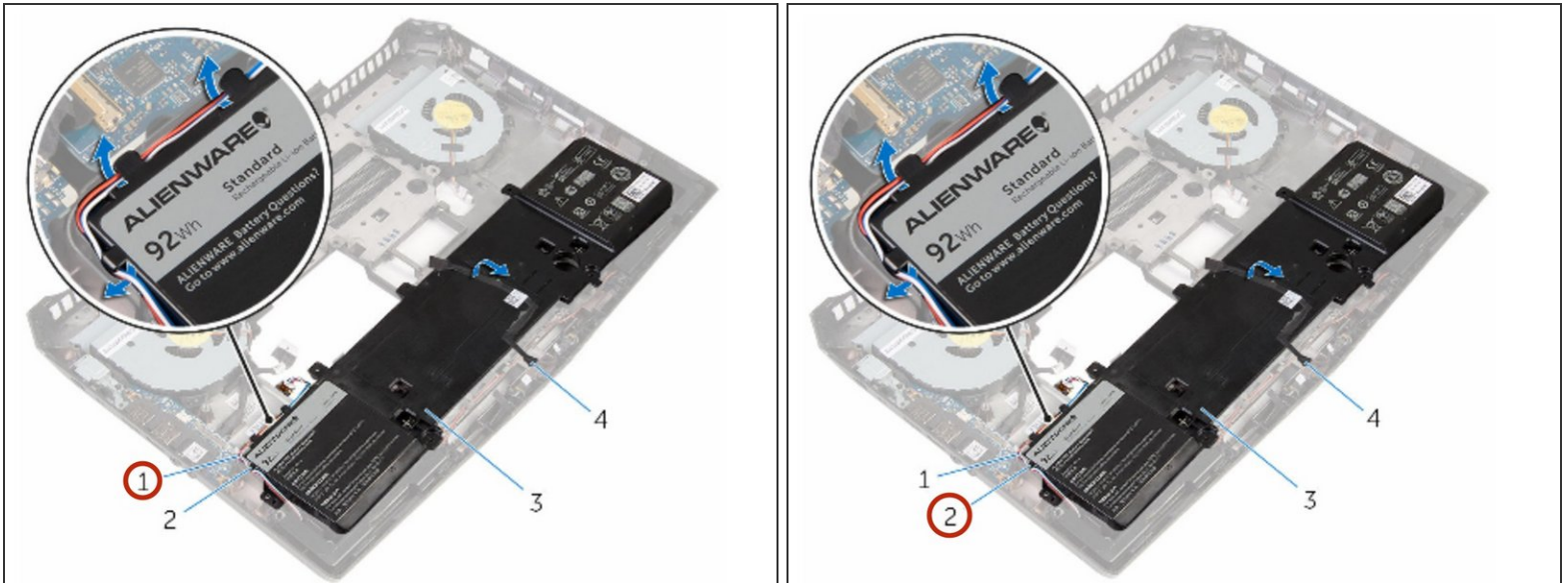
- Align the screw hole on the solid-state drive with the screw hole on the computer base.

Step 5 — Replace the Screw



- Replace the screw that secures the solid-state drive to the computer base.

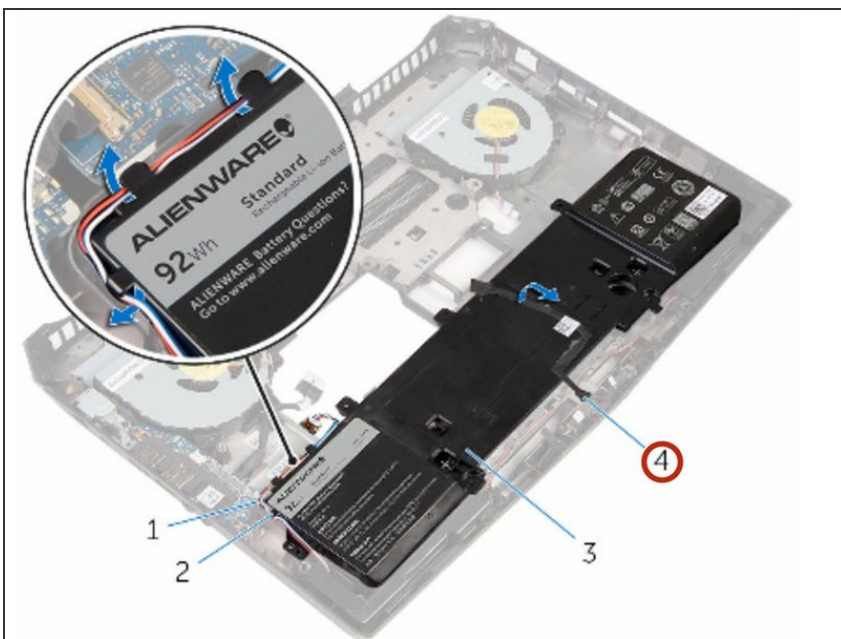
Step 6 — Remove the Speaker Cable



⚠ WARNING: Before working inside your computer, read the safety information that shipped with your computer and [Before Working Inside Your Computer](#). After working inside your computer, follow the instructions in [After Working Inside Your Computer](#).

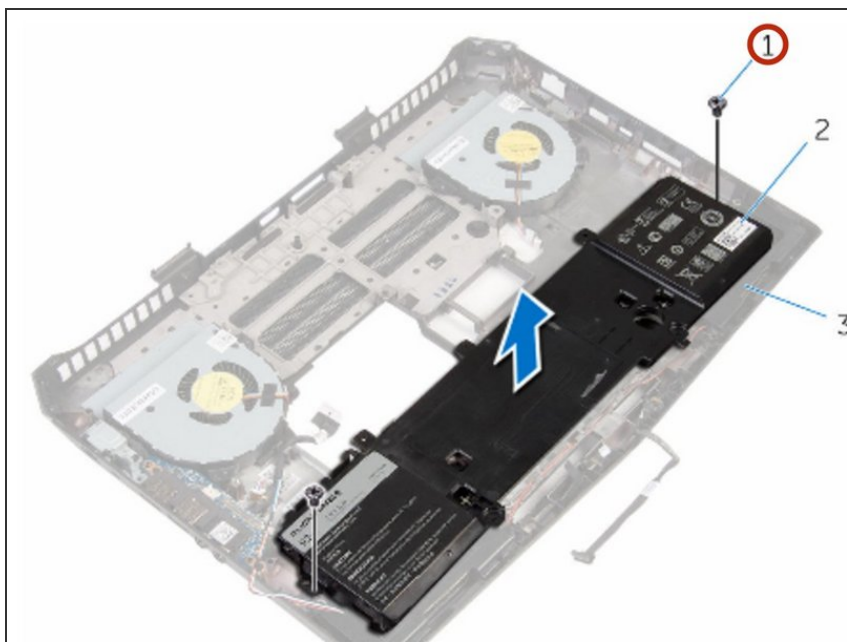
- Remove the speaker cable from the routing guides on the battery.

Step 7 — Peel off the Cable



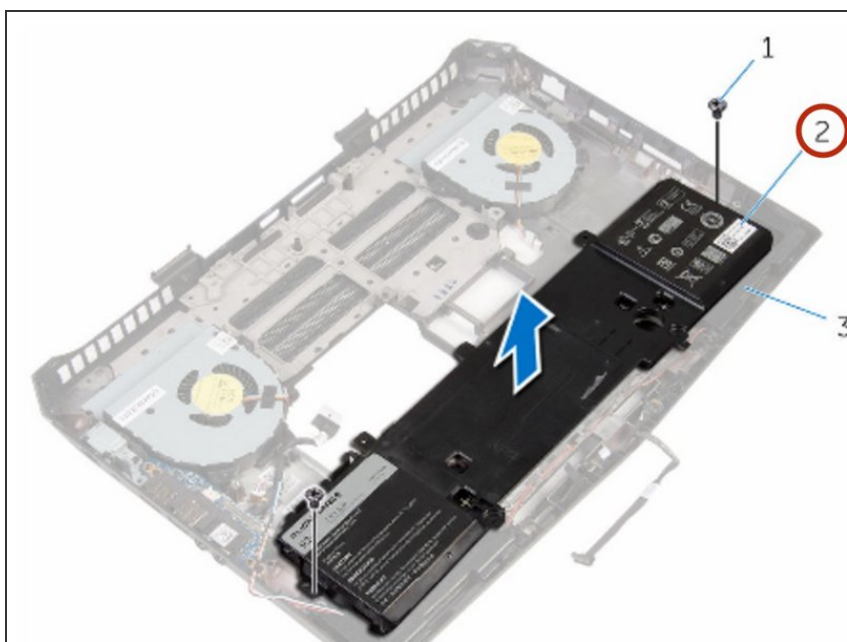
- Note the front AlienFX LED cable routing and peel off the cable from the battery.

Step 8 — Remove the Screws



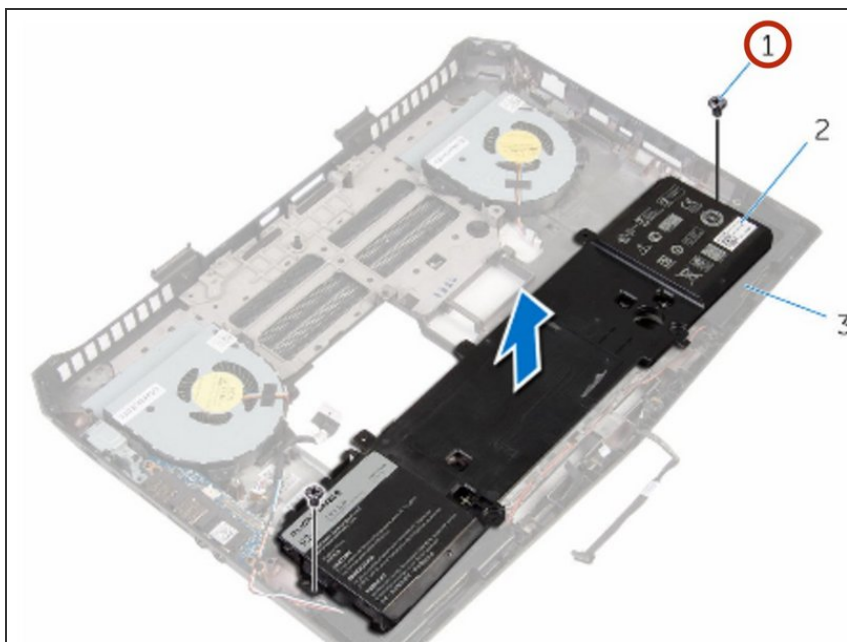
- Remove the screws that secure the battery to the computer base.

Step 9 — Lifting the Battery



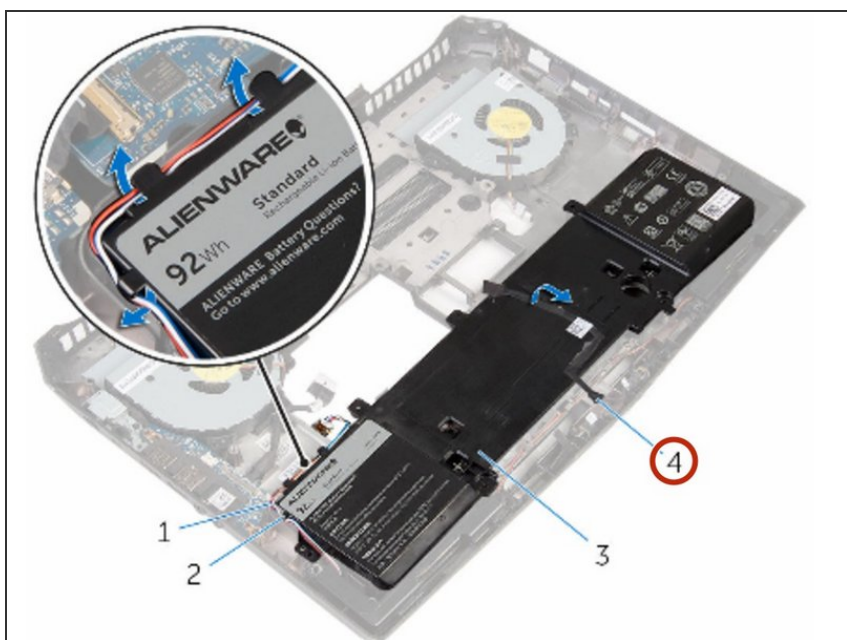
- Lift the battery off the computer base.

Step 10 — Align the Screw Holes



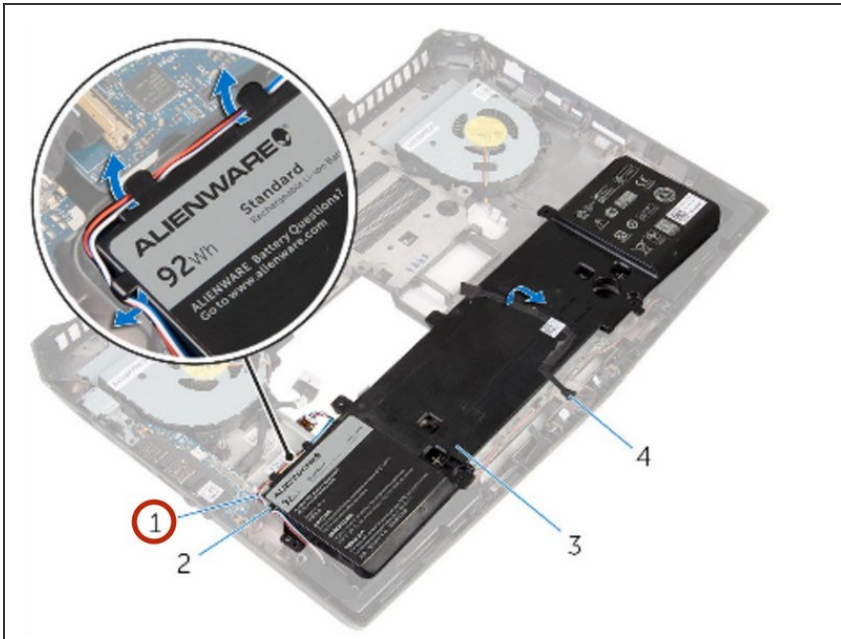
- Align the screw holes on the **NEW** battery with the screw holes on the computer base.

Step 11 — Adhere the AlienFX HD Cable



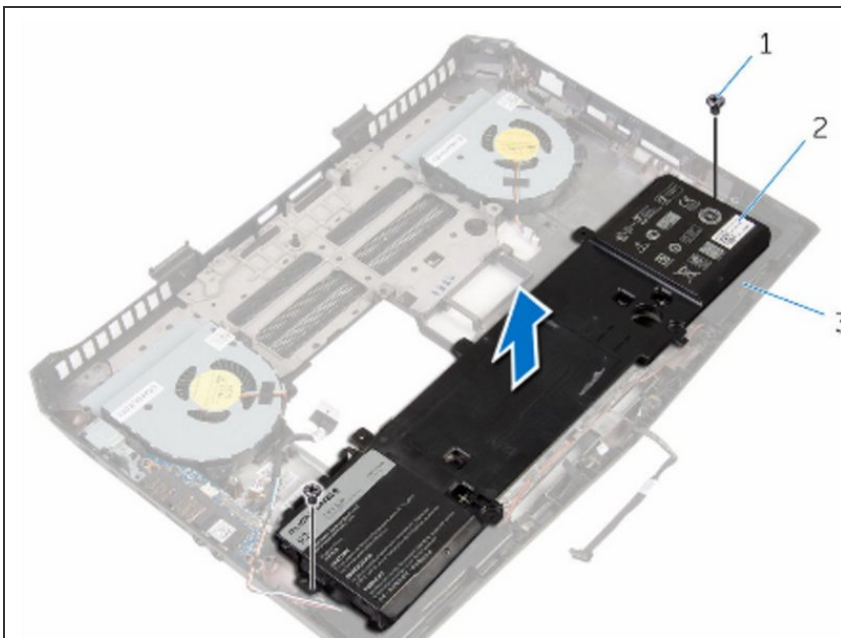
- Adhere the front AlienFX LED cable to the battery.

Step 12 — Route the Speaker Cable



- Route the speaker cable through the routing guides on the battery.

Step 13 — Replace the Screws



- Replace the screws that secure the battery to the computer base.

To reassemble your device, follow these instructions in reverse order.