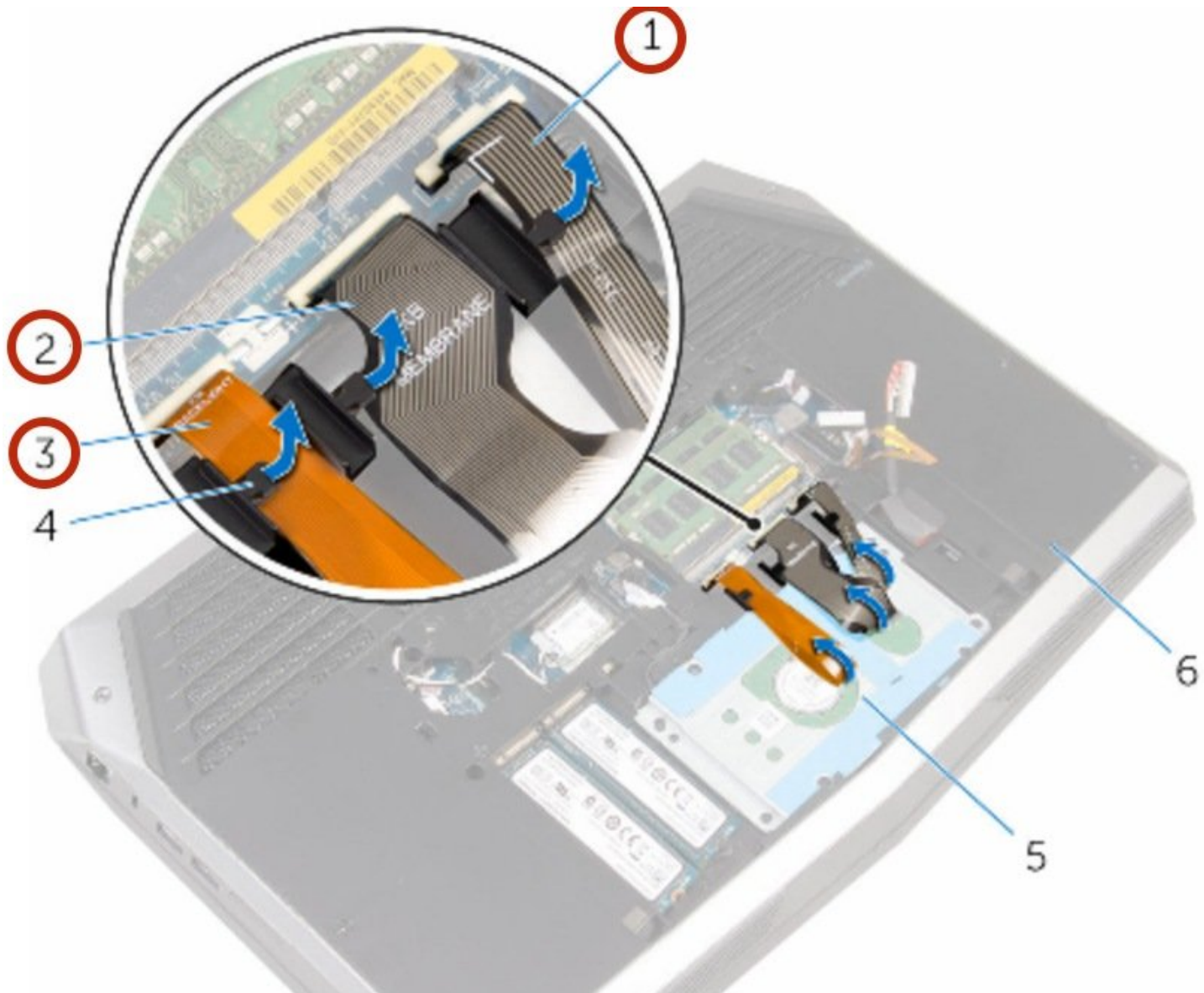




Dell Alienware 15 R2 Hard Drive Replacement

Written By: Terrence15



INTRODUCTION

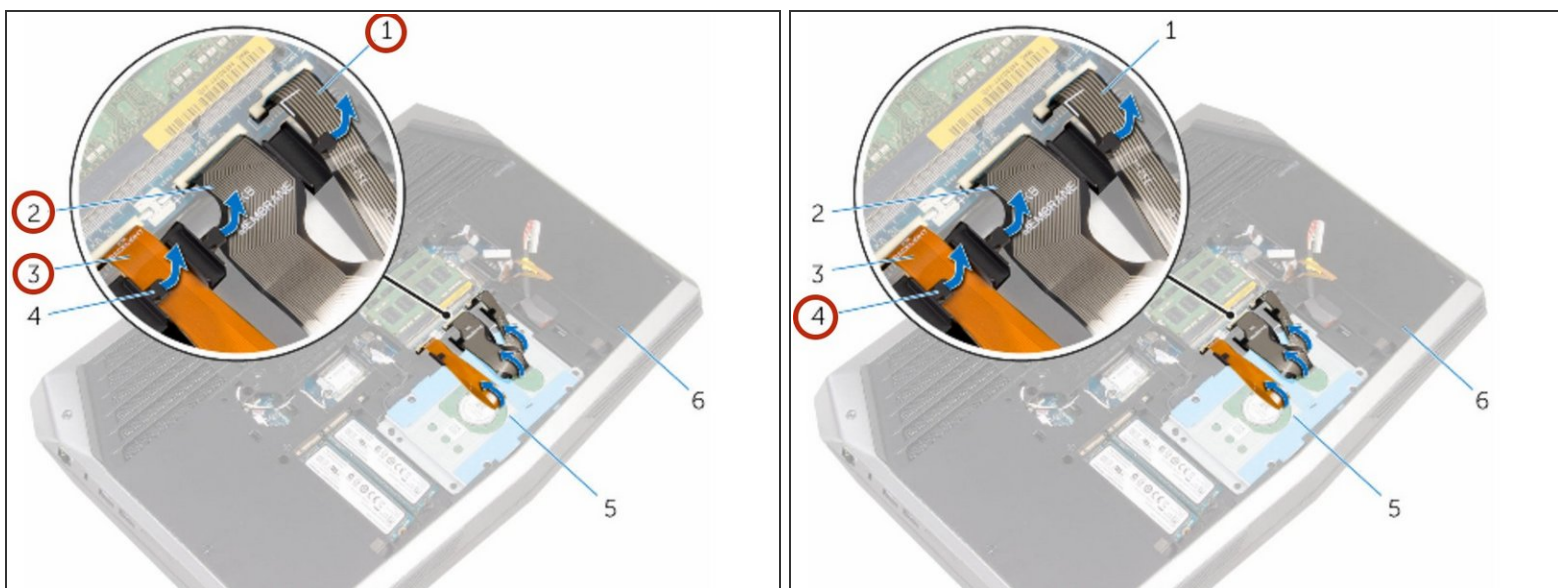
In this guide, we will show you how to remove and replace the Hard Drive.



TOOLS:

- [Pro Tech Toolkit](#) (1)
-

Step 1 — Removing the Cables



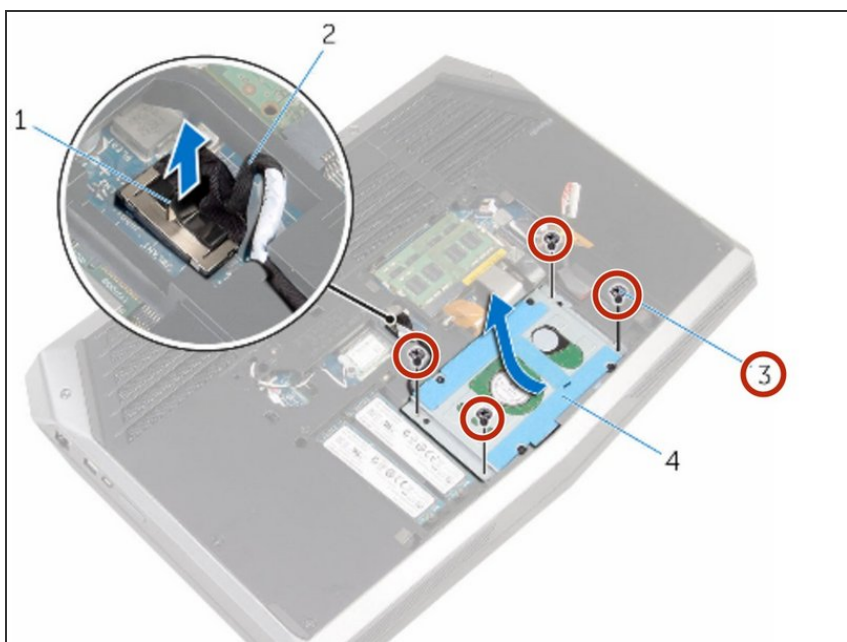
⚠ WARNING: Before working inside your computer, read the safety information that shipped with your computer and [Before Working Inside Your Computer](#). After working inside your computer, follow the instructions in [After Working Inside Your Computer](#).

⚠ CAUTION: Hard drives are fragile. Exercise care when handling the hard drive.

⚠ CAUTION: To avoid data loss, do not remove the hard drive while the computer is in sleep or on state.

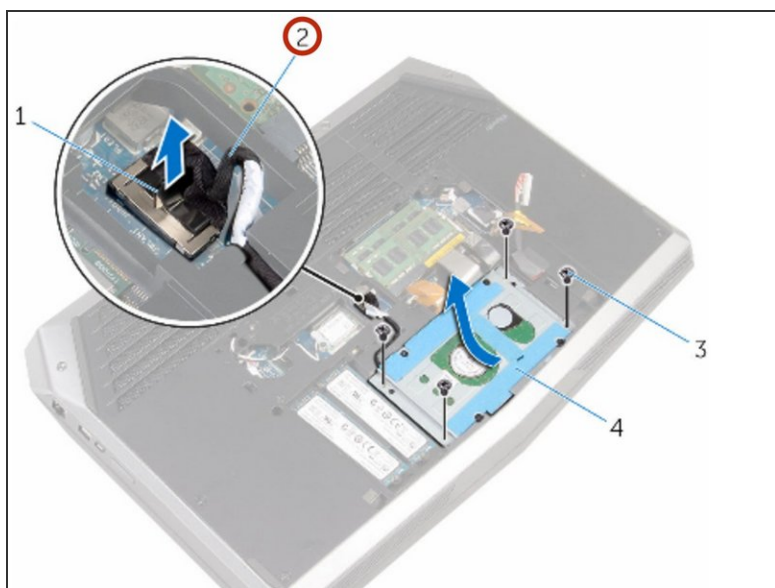
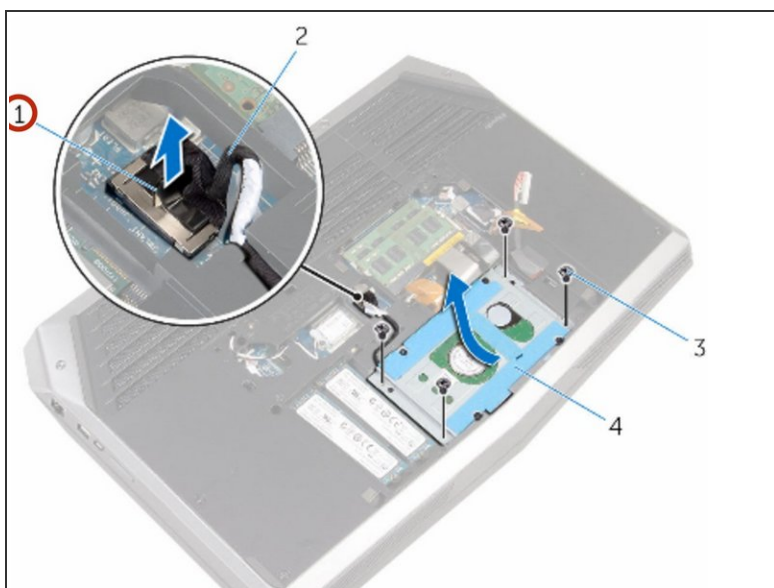
- Remove the keyboard-backlight cable, keyboard cable, and macro-keys cable from the routing guides on the computer base.

Step 2 — Remove the Screws



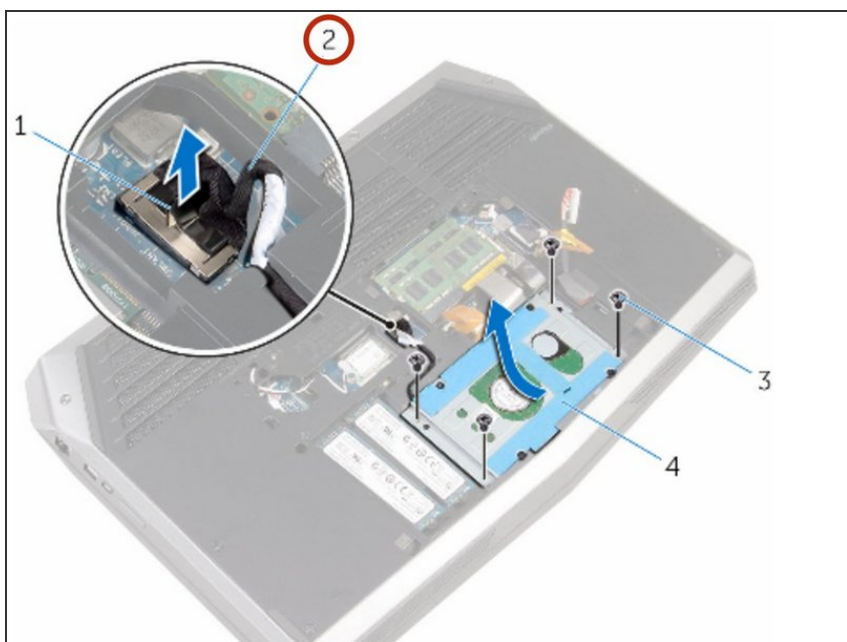
- Remove the screws that secure the hard-drive assembly to the computer base.

Step 3 — Disconnect the Hard-Drive Cable



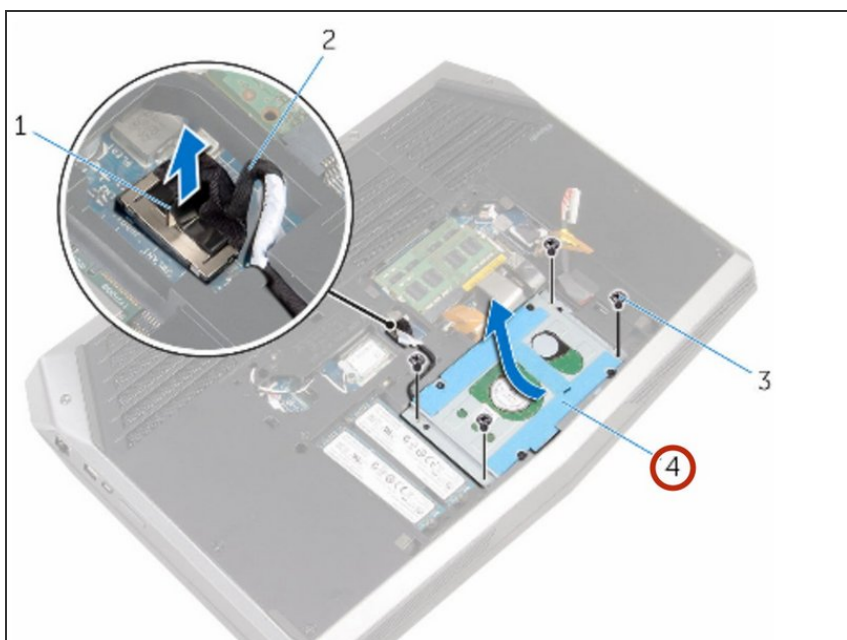
- Using the pull tab, disconnect the hard-drive cable from the system board.

Step 4 — Note the Routing



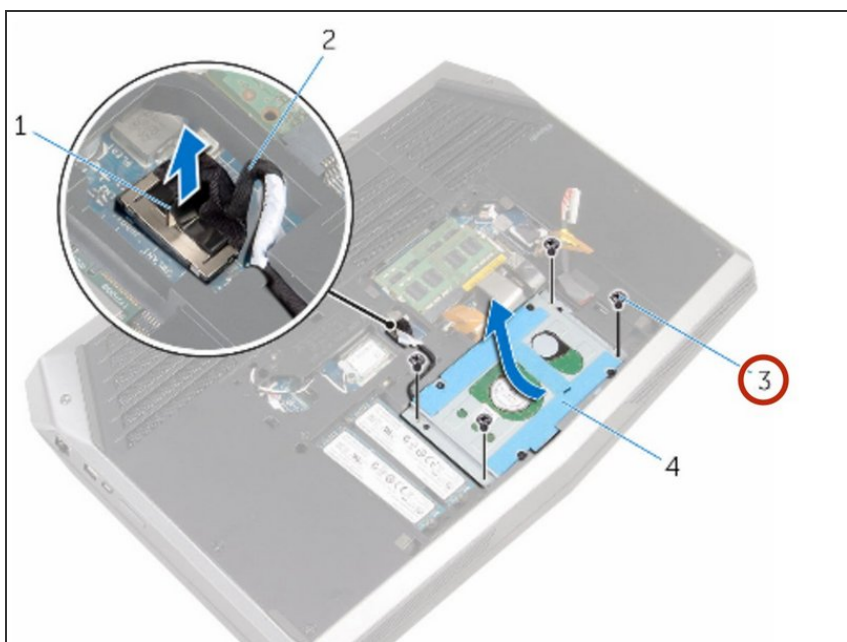
- Note the hard-drive cable routing and remove the cable from the routing guides on the computer base.

Step 5 — Sliding the Hard-Drive Assembly



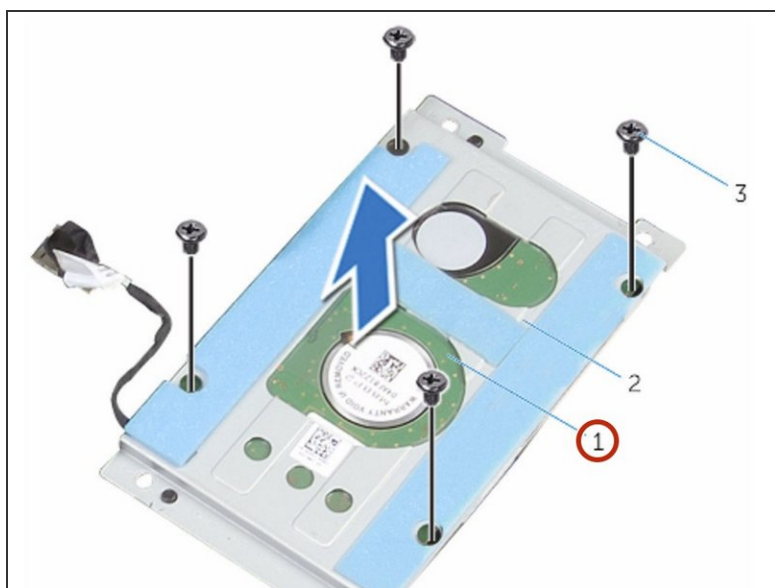
- Lift and slide the hard-drive assembly off the computer base.

Step 6 — Remove the Screws



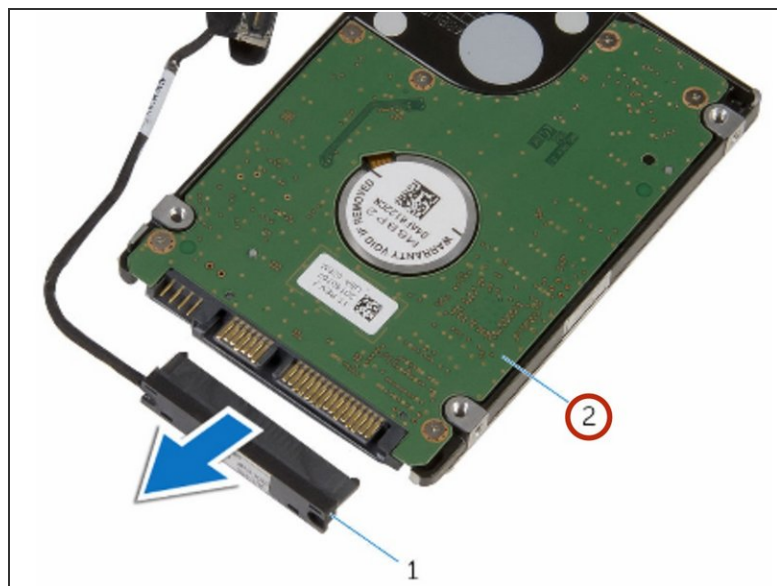
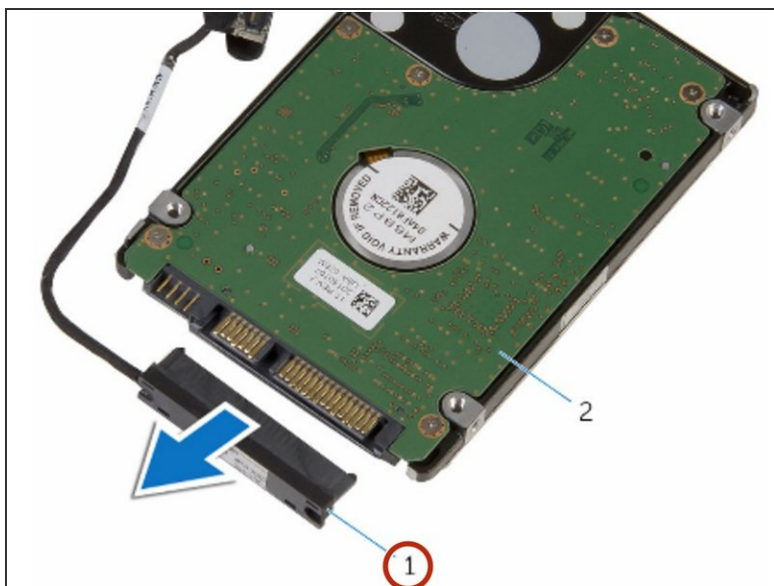
- Remove the screws that secure the hard-drive bracket to the hard-drive assembly.

Step 7 — Lifting the Hard-Drive Bracket



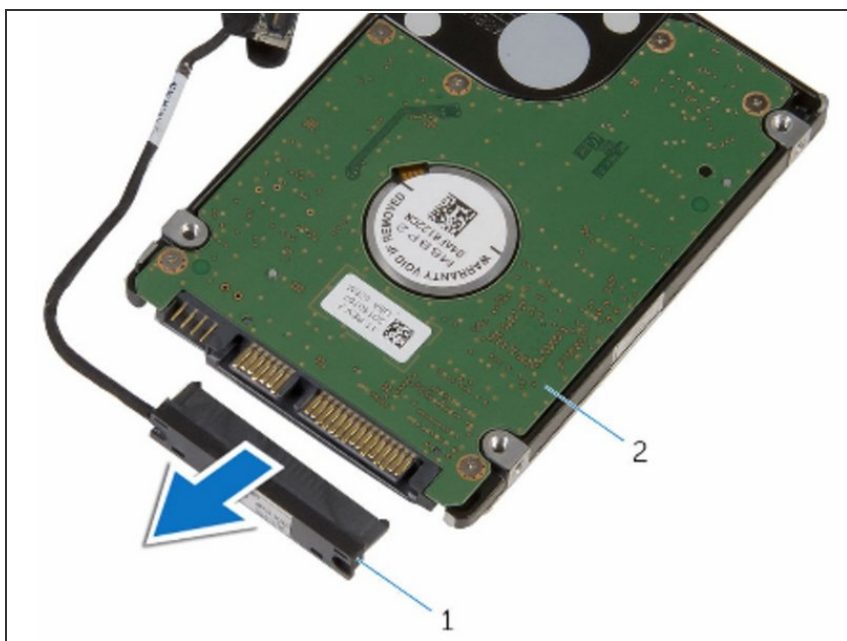
- Lift the hard-drive bracket off the hard-drive assembly.

Step 8 — Disconnecting the Interposer



- Disconnect the interposer from the hard drive.

Step 9 — Connecting the Interposer



- Connect the **NEW** interposer to the **NEW** hard drive.

Step 10 — Align the Screw Holes



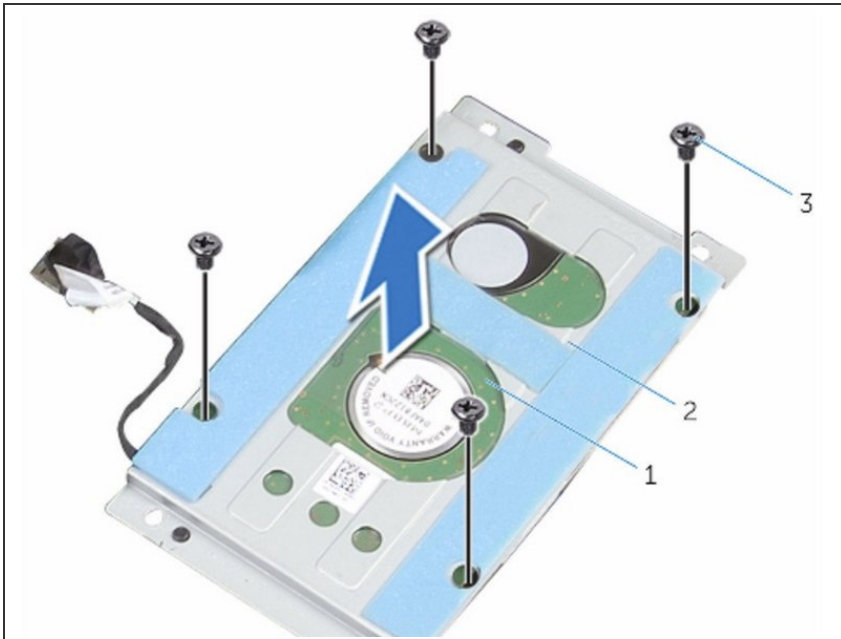
- Align the screw holes on the hard-drive bracket with the screw holes on the hard-drive assembly.

Step 11 — Replace the Screws



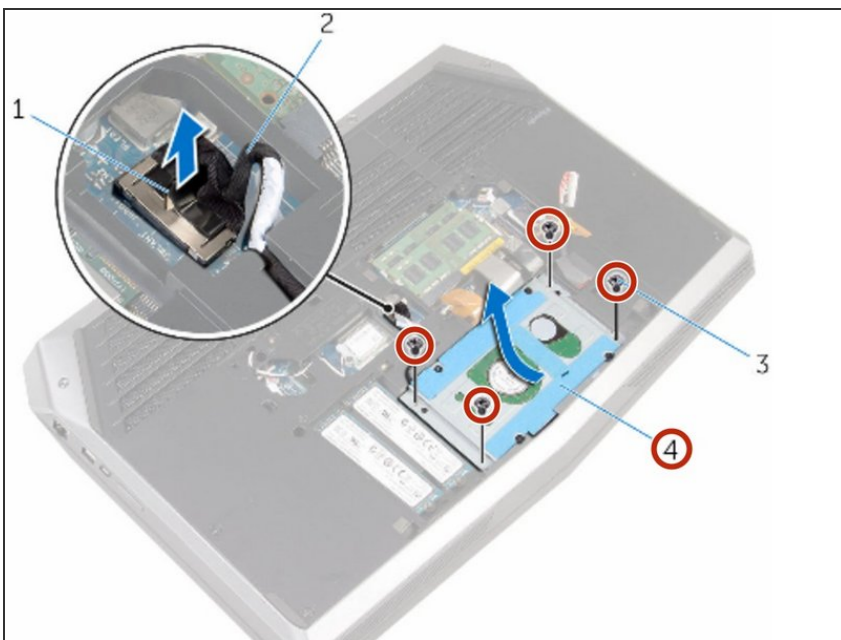
- Replace the screws that secure the hard-drive bracket to the hard-drive assembly.

Step 12 — Sliding the Hard-Drive Assembly



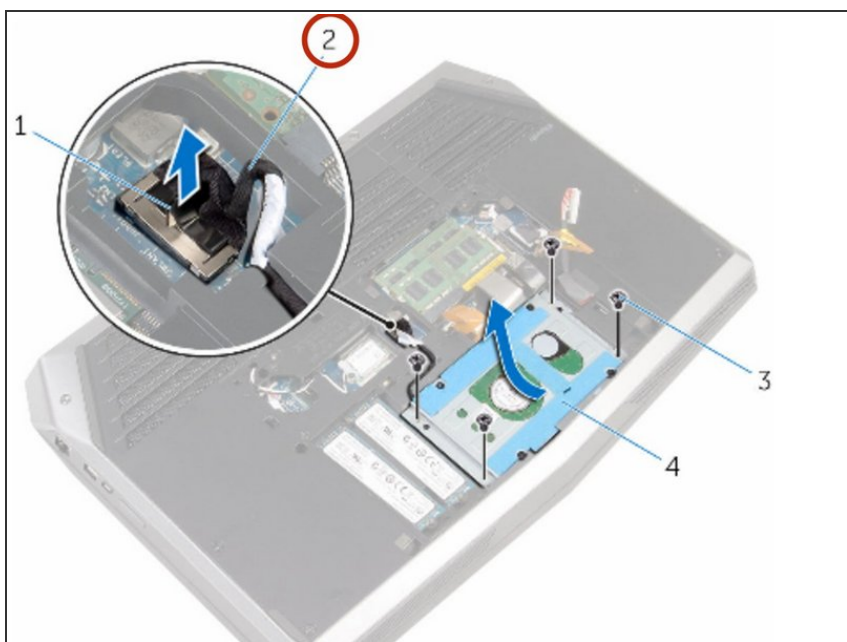
- Slide the hard-drive assembly under the tab on the computer base and align the screw holes on the hard-drive assembly with the screw holes on the computer base.

Step 13 — Replace the Screws



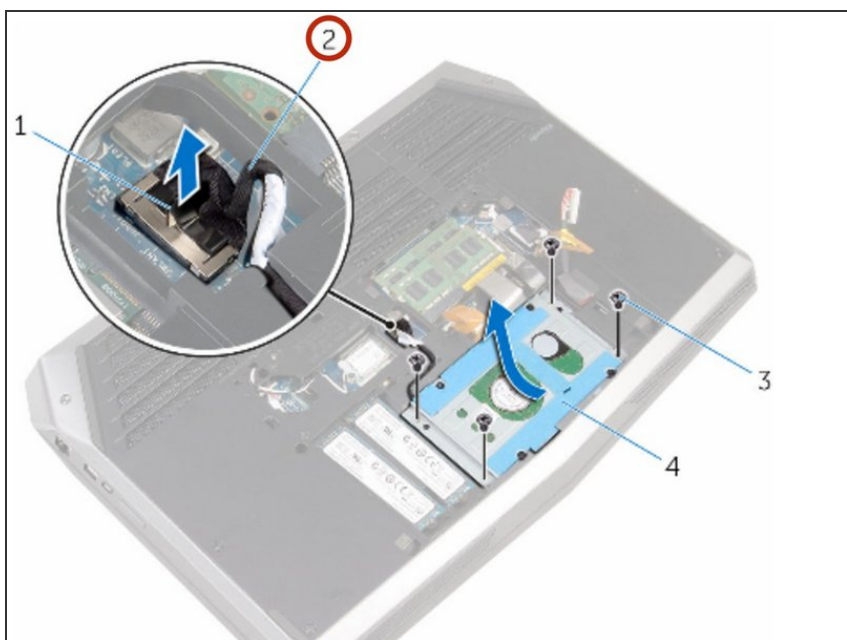
- Replace the screws that secure the hard-drive assembly to the computer base.

Step 14 — Route the Hard-Drive Cable



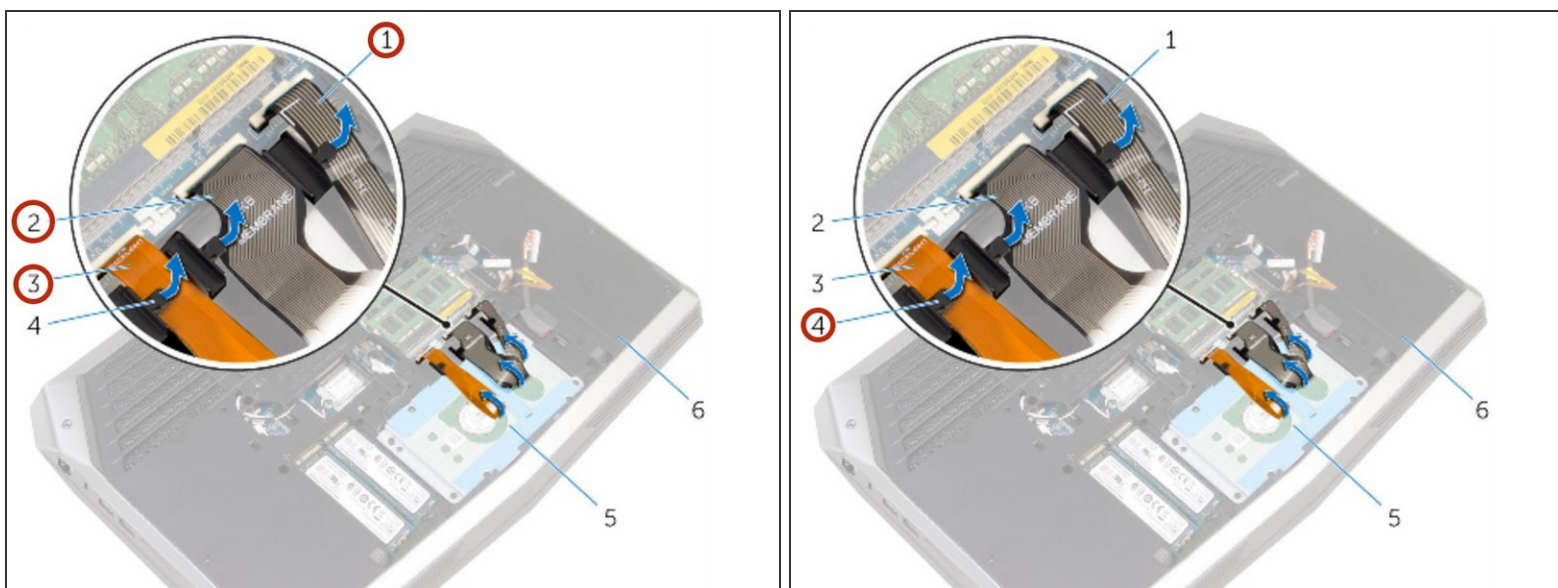
- Route the hard-drive cable through the routing guides on the computer base.

Step 15 — Connecting the Hard-Drive Cable



- Connect the hard-drive cable to the system board.

Step 16 — Routing the Keyboard-Backlight Cable



- Route the keyboard-backlight cable, keyboard cable, and macro-keys cable through the routing guides on the computer base.

To reassemble your device, follow these instructions in reverse order.