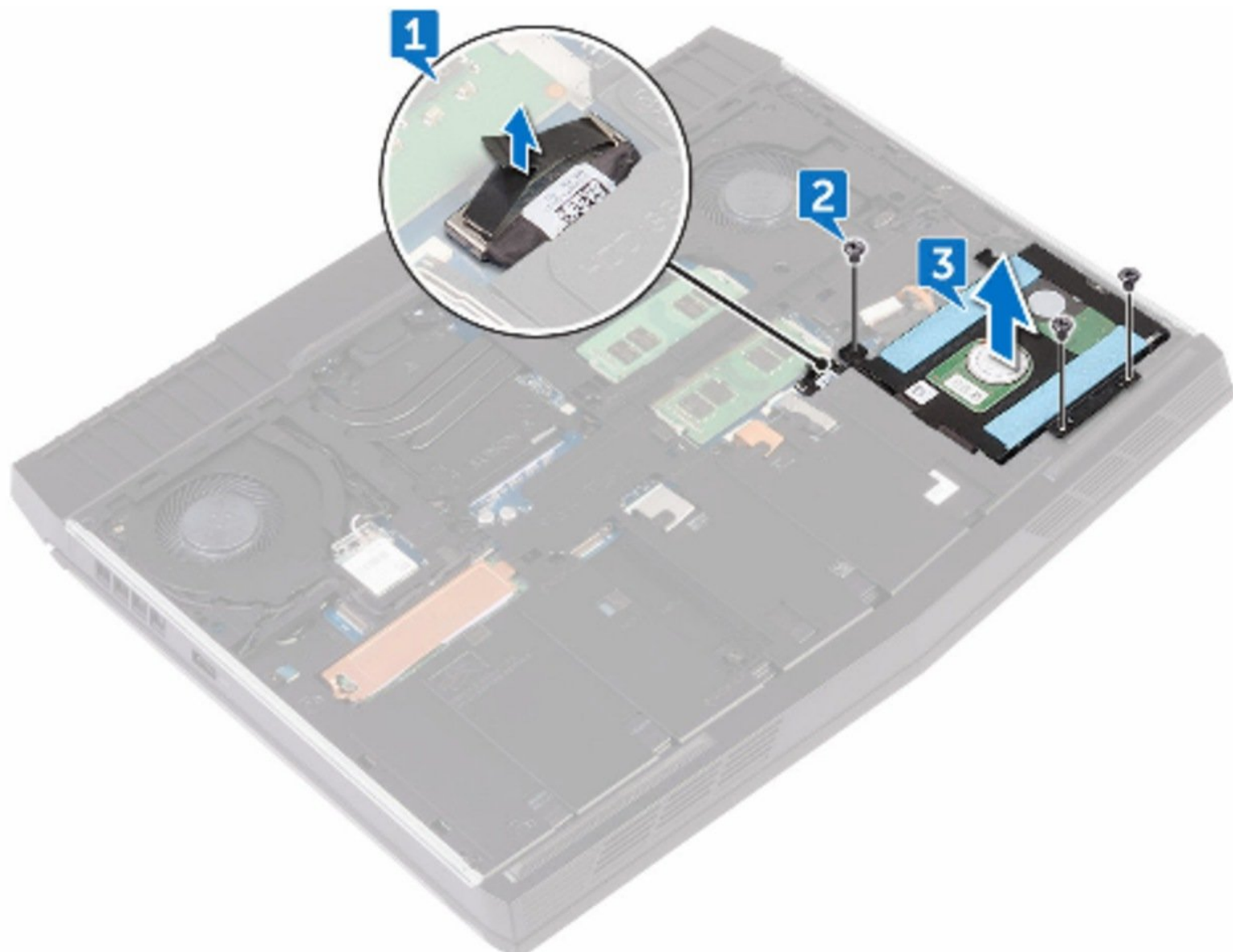




# Dell Alienware 15 R3 Hard Drive Replacement

Written By: Terrence15



---

# INTRODUCTION

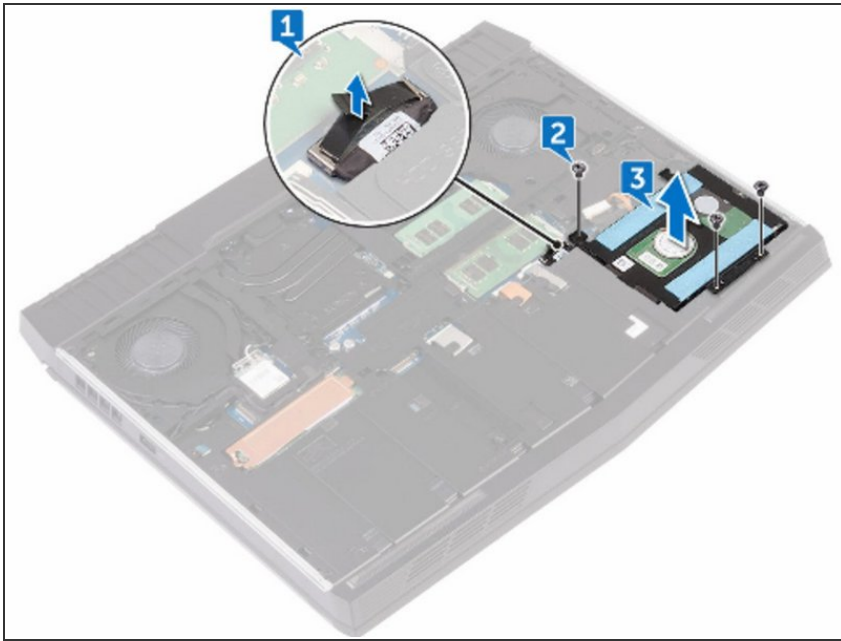
In this guide, we will show you how to remove and replace the Hard Drive.



## TOOLS:

- [Pro Tech Toolkit](#) (1)
-

## Step 1 — Disconnect the Hard-Drive Cable



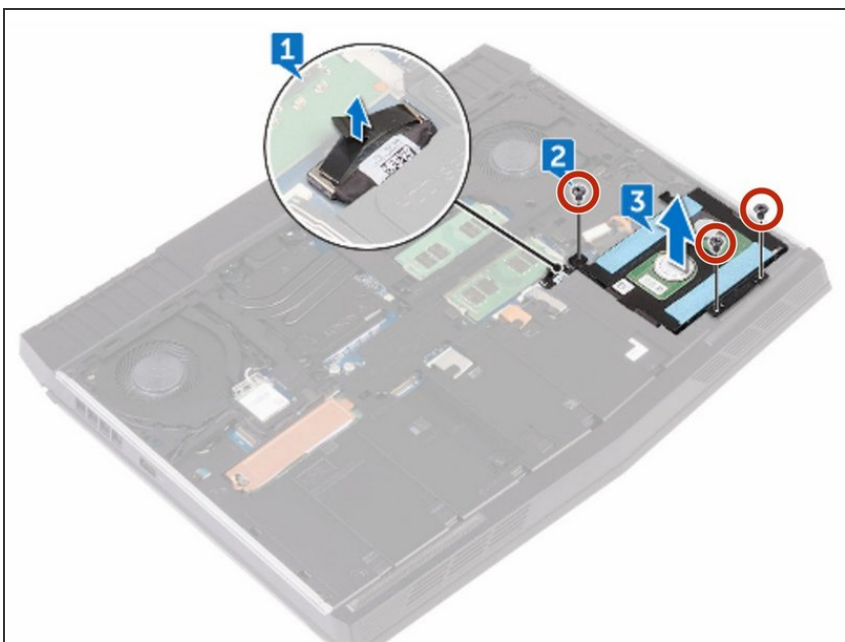
**⚠ WARNING:** Before working inside your computer, read the safety information that shipped with your computer and follow the steps in [Before Working Inside Your Computer](#). After working inside your computer, follow the instructions in [After Working Inside Your Computer](#).

**⚠ CAUTION:** Hard drives are fragile. Exercise care when handling the hard drive.

**⚠ CAUTION:** To avoid data loss, do not remove the hard drive while the computer is in sleep or on state.

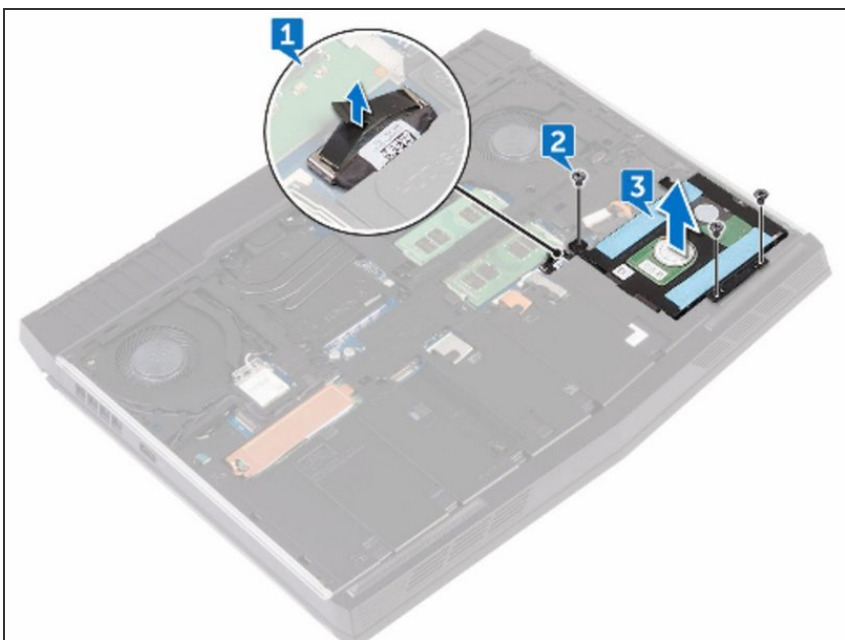
- Using the pull-tab, disconnect the hard-drive cable from the system board.

## Step 2 — Remove the Screws



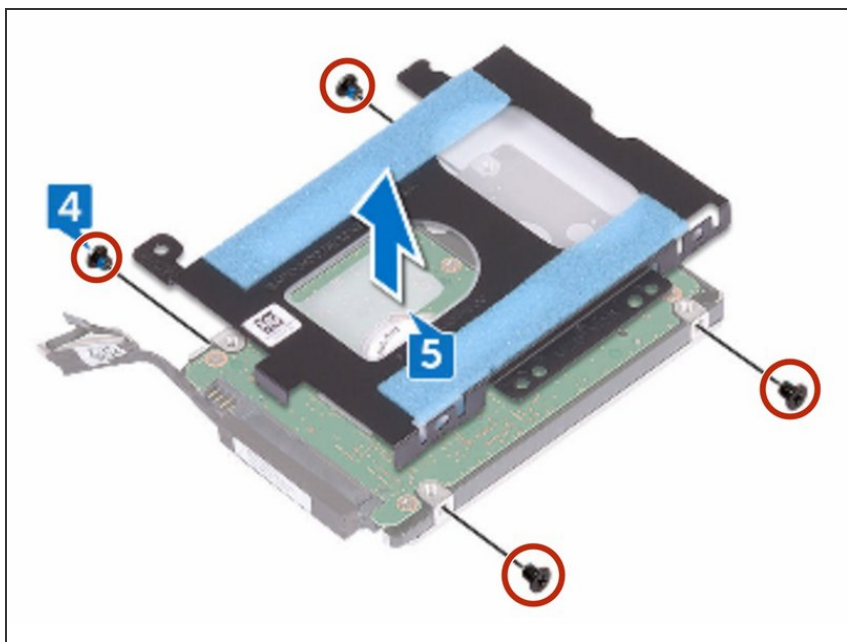
- Remove the three screws (M2.5x8) that secure the hard-drive assembly to the computer base.

## Step 3 — Lifting the Hard-Drive Assembly



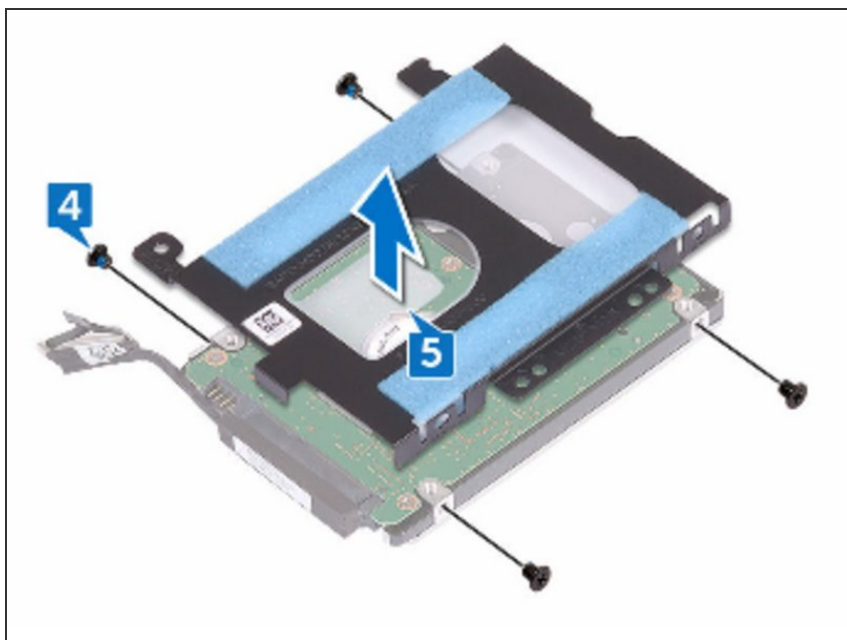
- Lift the hard-drive assembly along with its cable off the computer base.

## Step 4 — Remove the Four Screws



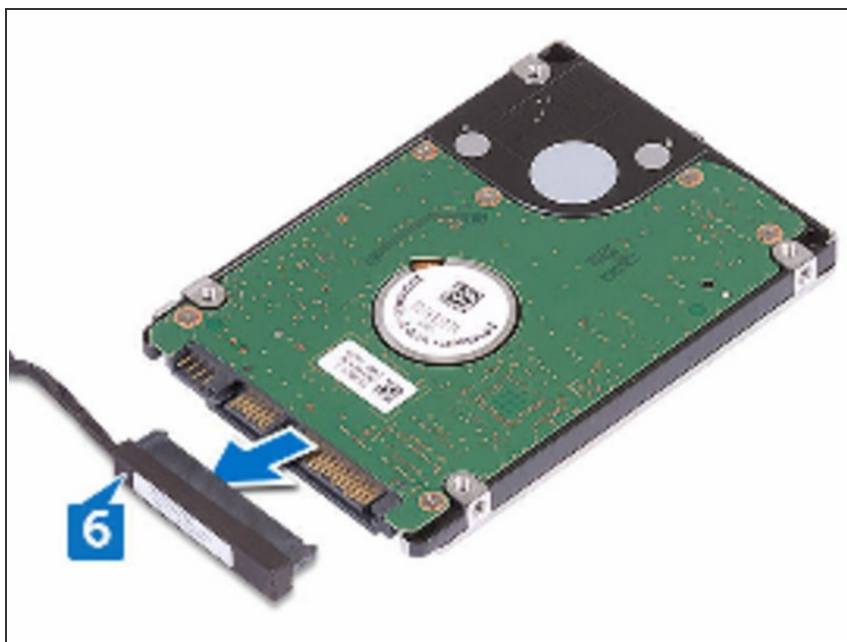
- Remove the four screws (M3x3) that secure the hard-drive bracket to the hard-drive assembly.

## Step 5 — Lifting the Hard-Drive Bracket



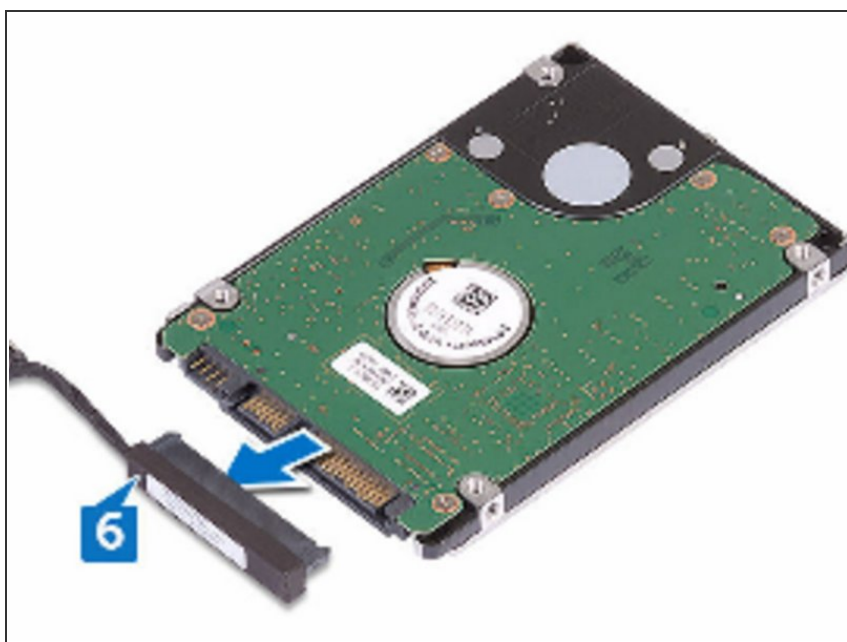
- Lift the hard-drive bracket off the hard-drive assembly.

## Step 6 — Disconnect the Interposer



- Disconnect the interposer from the hard drive.

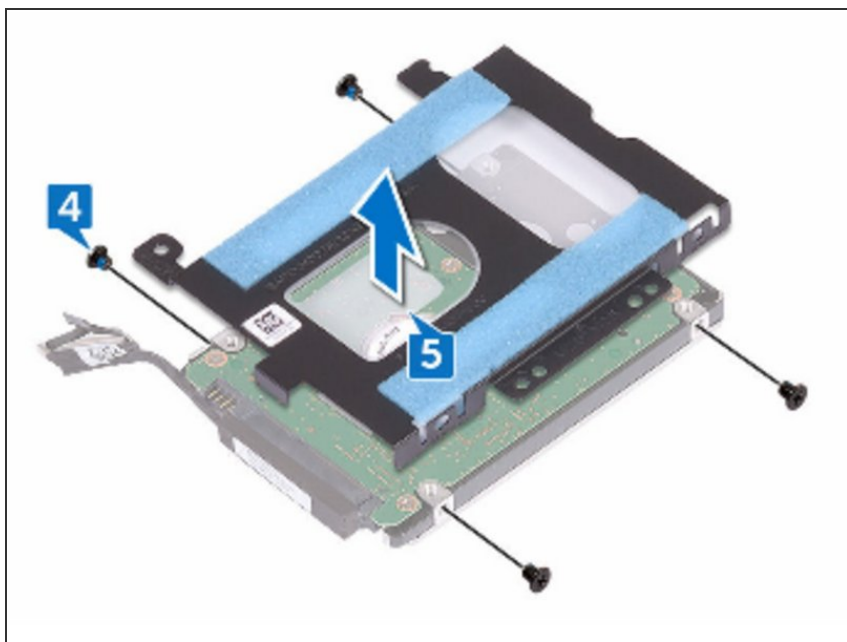
## Step 7 — Connect the Interposer



- Connect the interposer to the **NEW** hard drive.

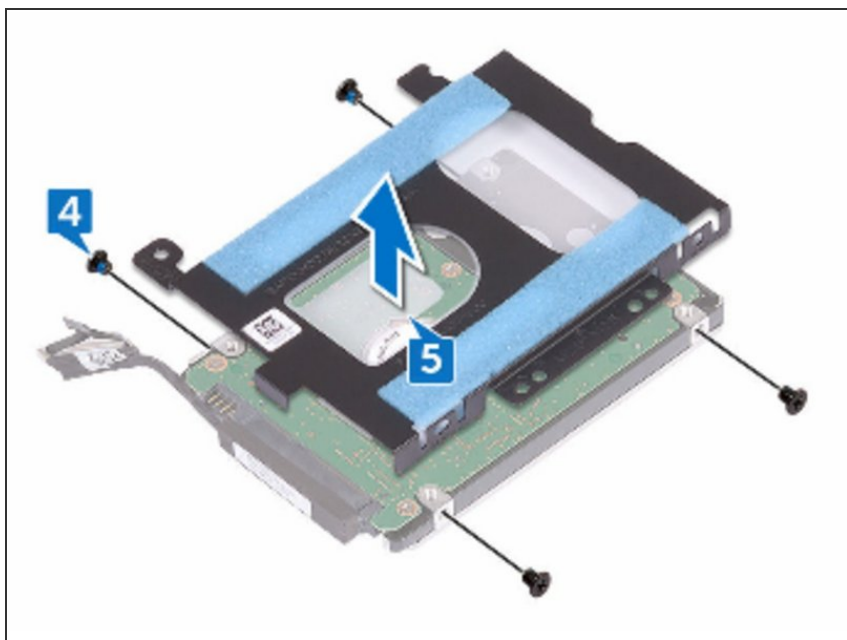


## Step 8 — Align the Screw Holes



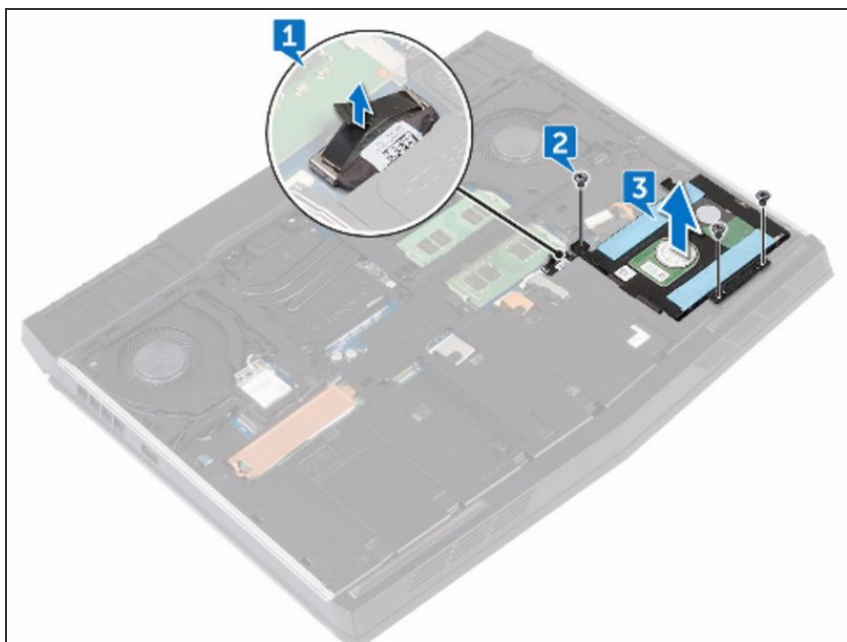
- Align the screw holes on the hard-drive bracket with the screw holes on the hard-drive assembly.

## Step 9 — Replace the Four Screws



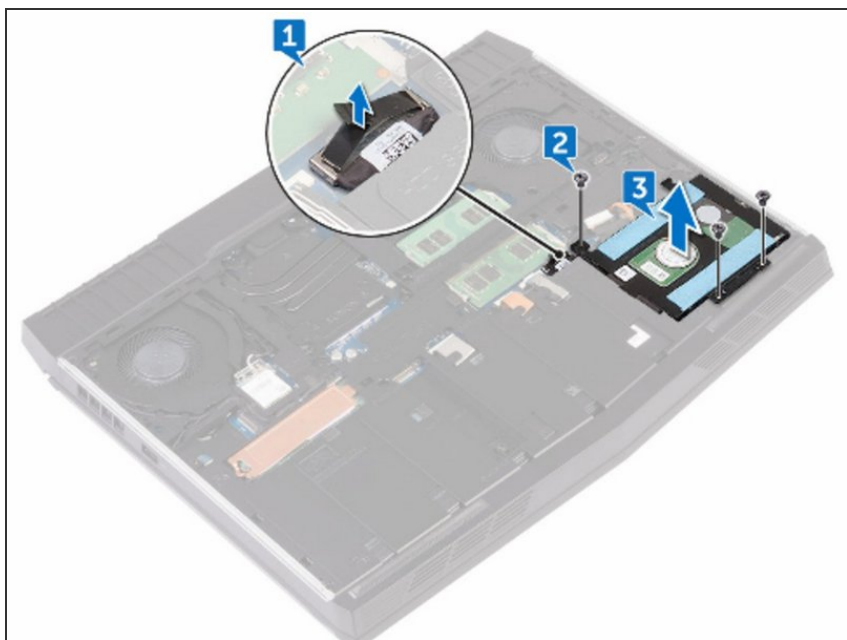
- Replace the four screws (M3x3) that secure the hard-drive bracket to the hard-drive assembly.

## Step 10 — Align the Screw Holes



- Align the screw holes on the hard-drive assembly with the screw holes on the computer base.

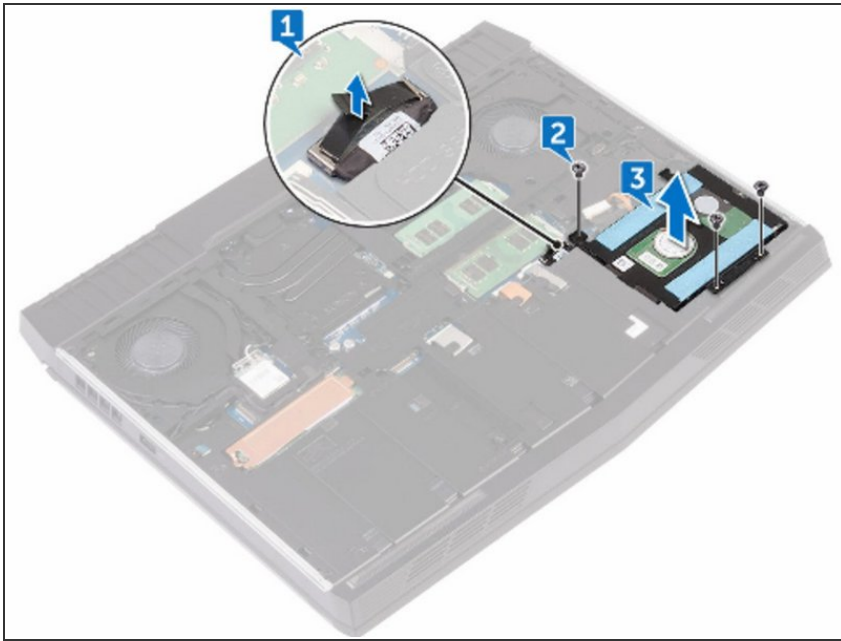
## Step 11 — Replace the Screws



- Replace the three screws (M2.5x8) that secure the hard-drive assembly to the computer base.



## Step 12 — Connecting the Hard-Drive Cable



- Connect the hard-drive cable to the system board.

To reassemble your device, follow these instructions in reverse order.