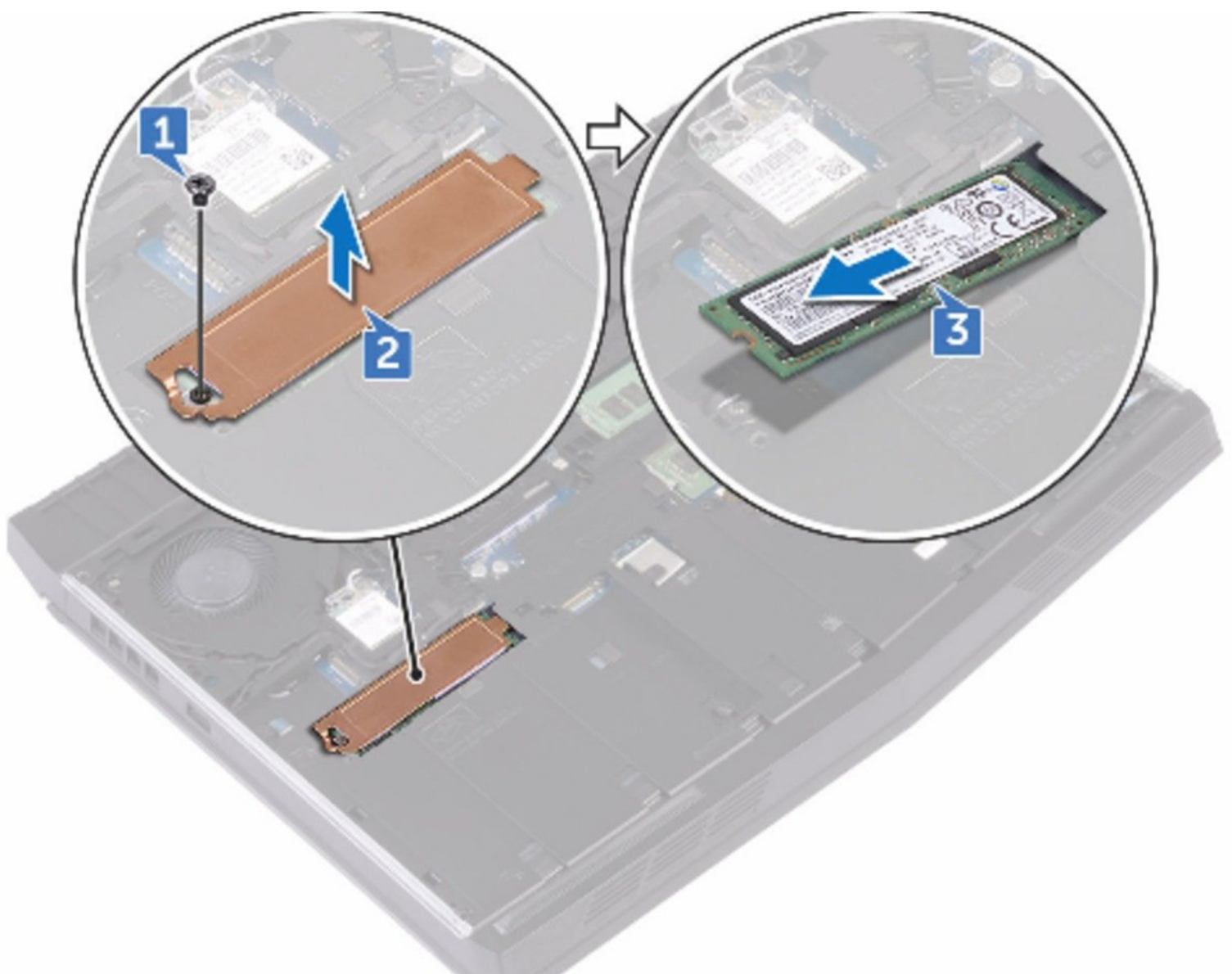




Dell Alienware 15 R3 Solid-State Drive Replacement

Written By: Terrence15



INTRODUCTION

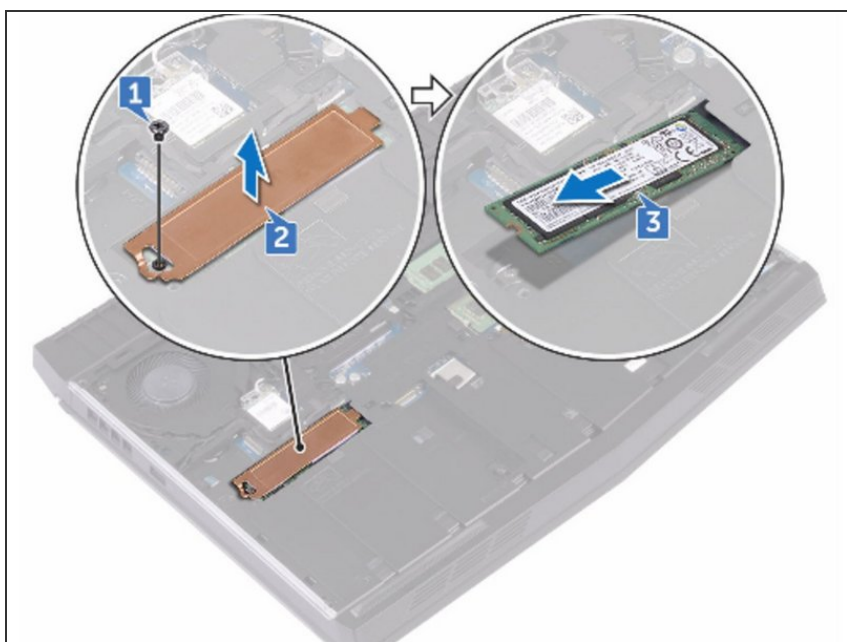
In this guide, we will show you how to remove and replace the Solid-State Drive.



TOOLS:

- [Pro Tech Toolkit](#) (1)
-

Step 1 — Remove the Screw



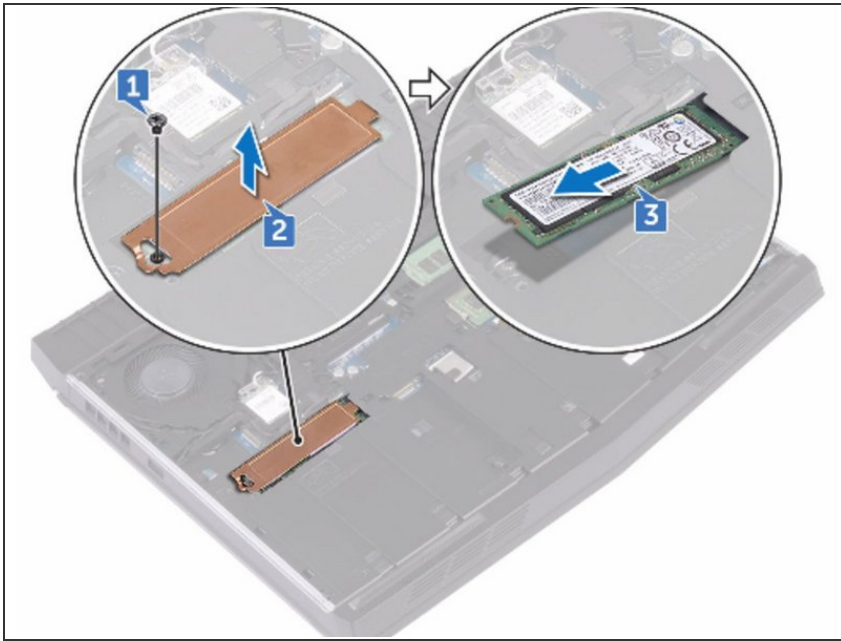
⚠ WARNING: Before working inside your computer, read the safety information that shipped with your computer and follow the steps in [Before Working Inside Your Computer](#). After working inside your computer, follow the instructions in [After Working Inside Your Computer](#).

⚠ CAUTION: Solid-state drives are fragile. Exercise care when handling the solid-state drive.

⚠ CAUTION: To avoid data loss, do not remove the solid-state drive while the computer is in sleep or on state.

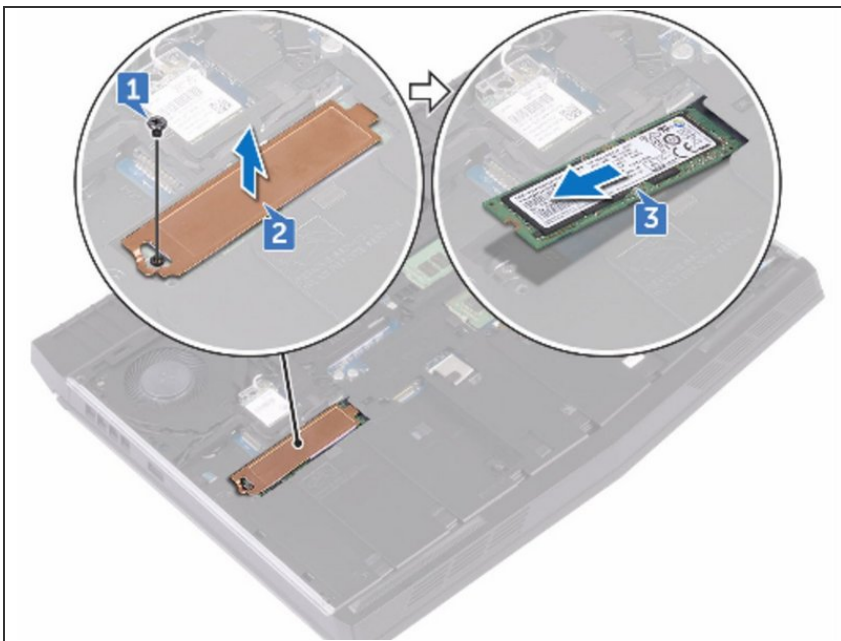
- Remove the screw (M2x3) that secures the solid-state drive shield and solid-state drive to the computer base.

Step 2 — Peeling the Solid-State Drive Shield



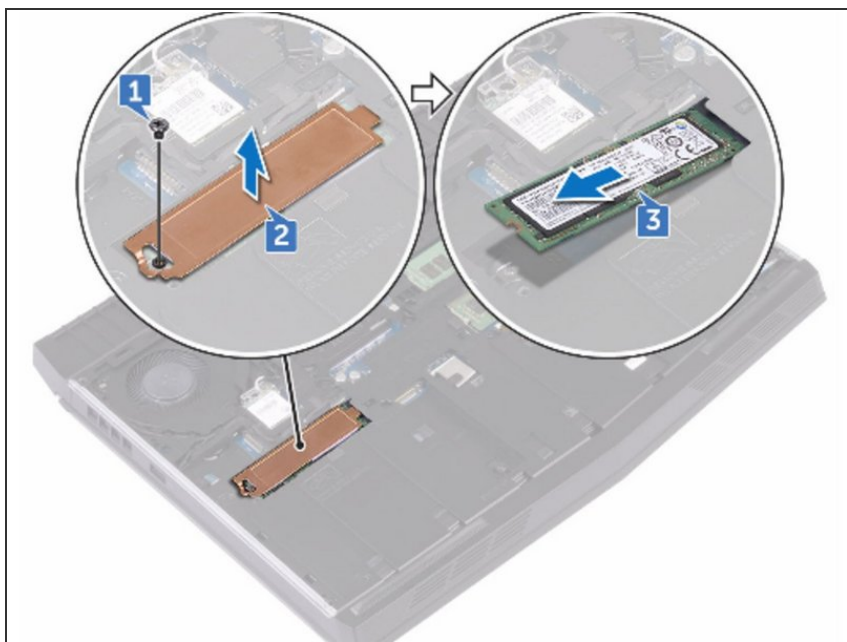
- Peel off the solid-state drive shield from the solid-state drive.
- ⓘ NOTE: Solid-state drive shield is applicable to computers that are shipped with 1 TB solid-state drive.

Step 3 — Removing the Solid-State Drive



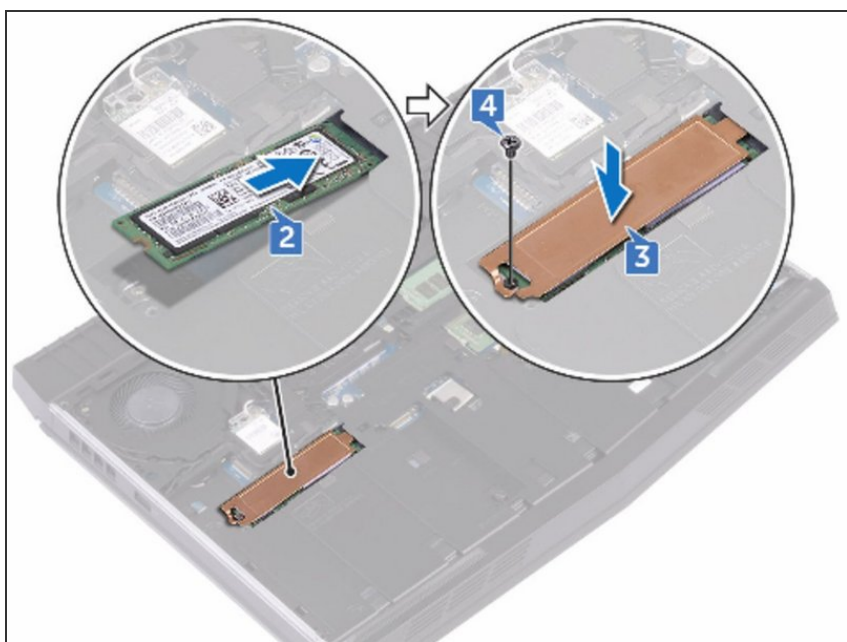
- Slide and remove the solid-state drive from the solid-state drive slot.

Step 4 — Align the Notch



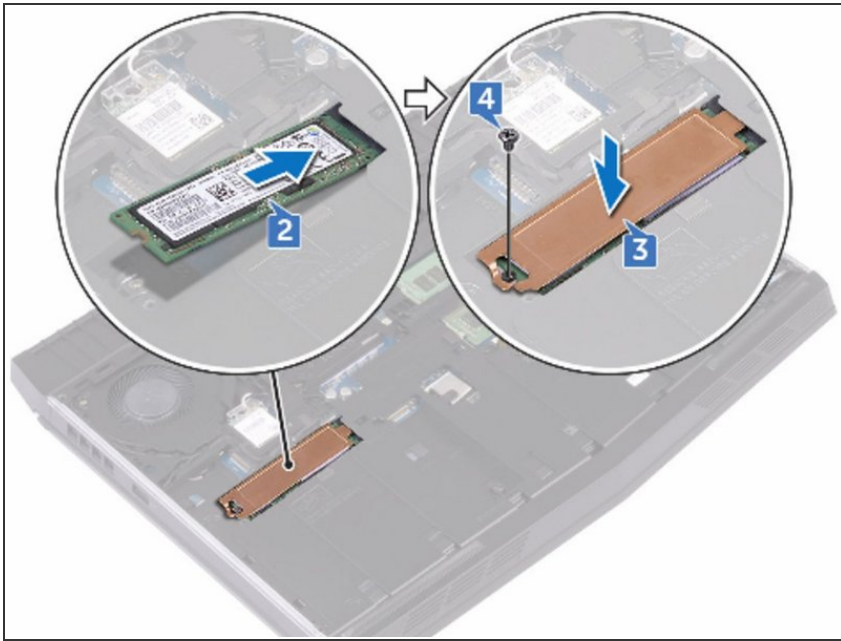
- Align the notch on the solid-state drive with the tab on the solid-state drive slot.

Step 5 — Sliding the Solid-State Drive



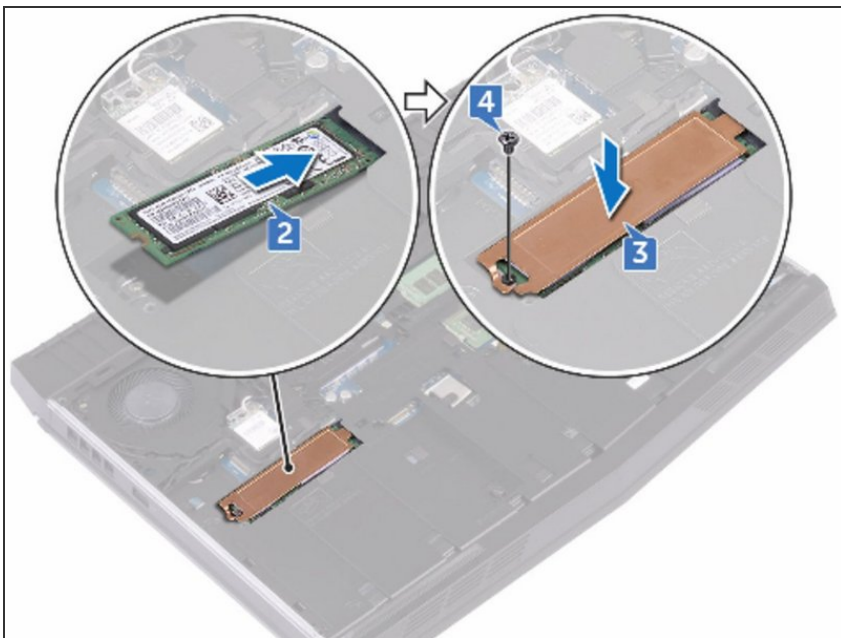
- Slide the solid-state drive into the solid-state drive slot.

Step 6 — Adhering the Solid-State Drive Shield



- Slide and adhere the solid-state drive shield on the **NEW** solid-state drive.

Step 7 — Replace the Screw



- Replace the screw (M2x3) that secures the solid-state drive and solid-state drive shield to the computer base.

To reassemble your device, follow these instructions in reverse order.