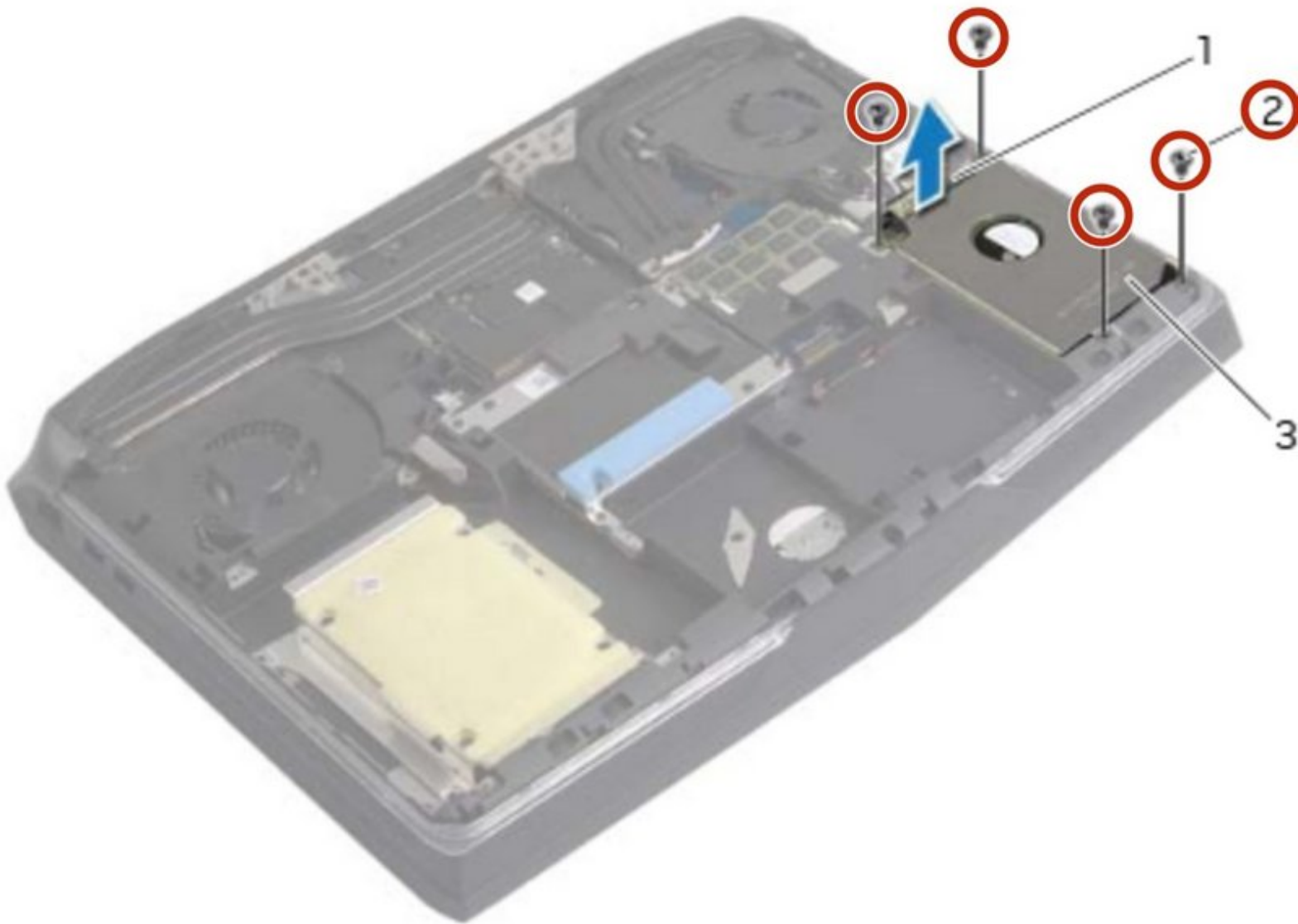




# Dell Alienware 17 Secondary Hard-Drive Replacement

Written By: Terrence15



---

## INTRODUCTION

In this guide, we will be showing you how to remove and replace the Secondary Hard-Drive.

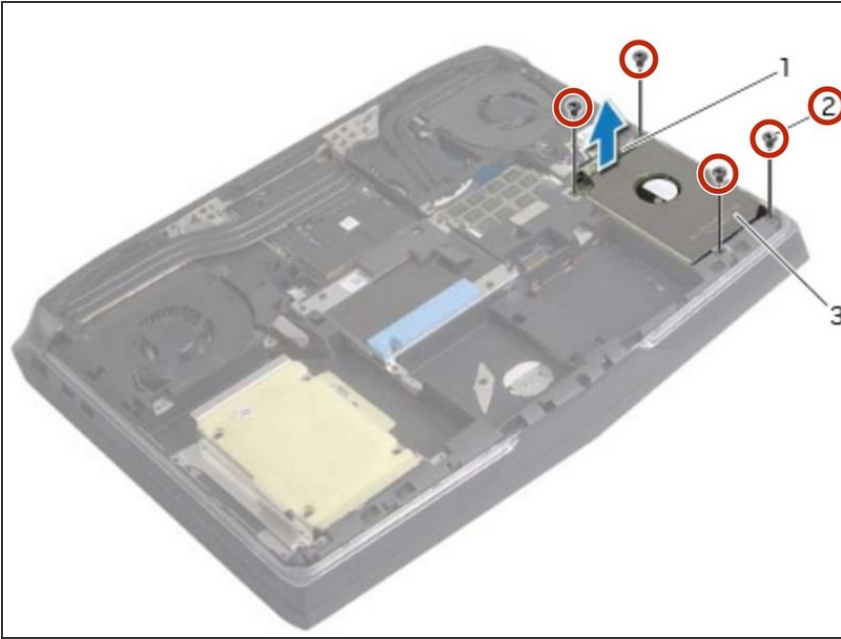
---



### TOOLS:

- [Pro Tech Toolkit](#) (1)
-

## Step 1 — Remove the Screws



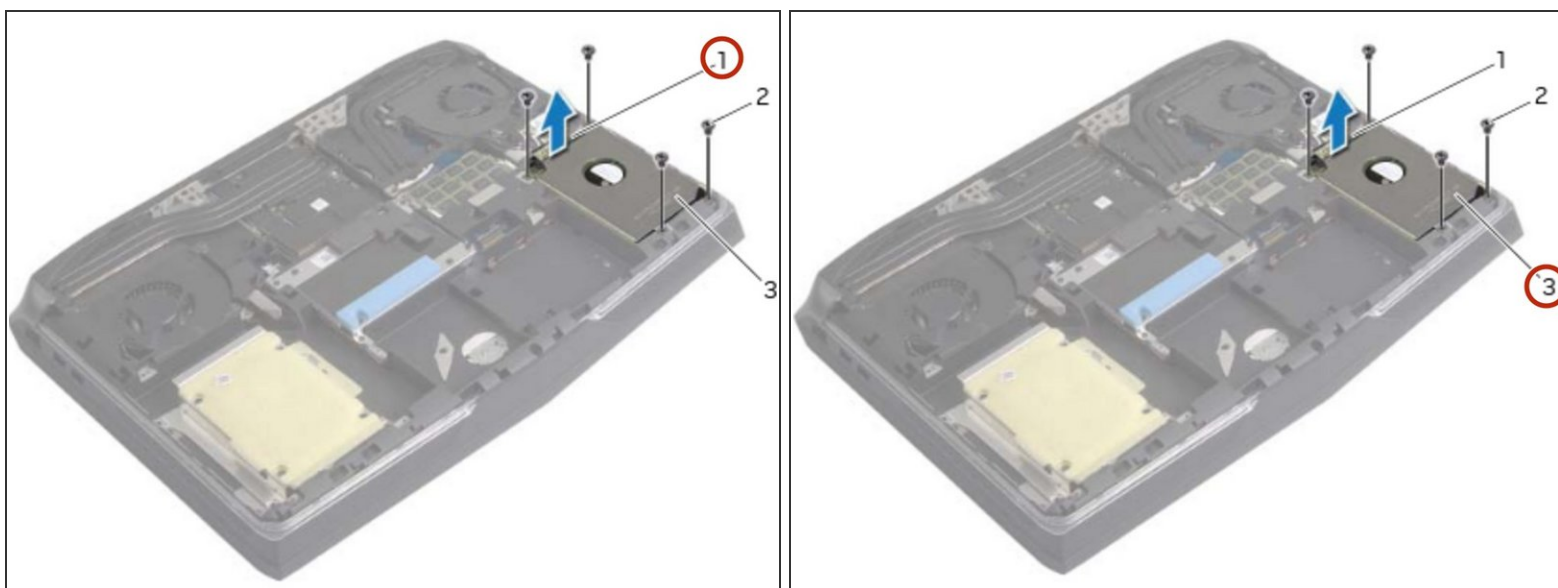
**WARNING:** Before working inside your computer, read the safety information that shipped with your computer and follow the steps in [Before Working Inside Your Computer](#). After working inside your computer, follow the instructions [After Working Inside Your Computer](#).

**CAUTION:** To avoid data loss, do not remove the hard drive while the computer is On or in Sleep state.

**CAUTION:** Hard drives are extremely fragile. Exercise care when handling the hard drive.

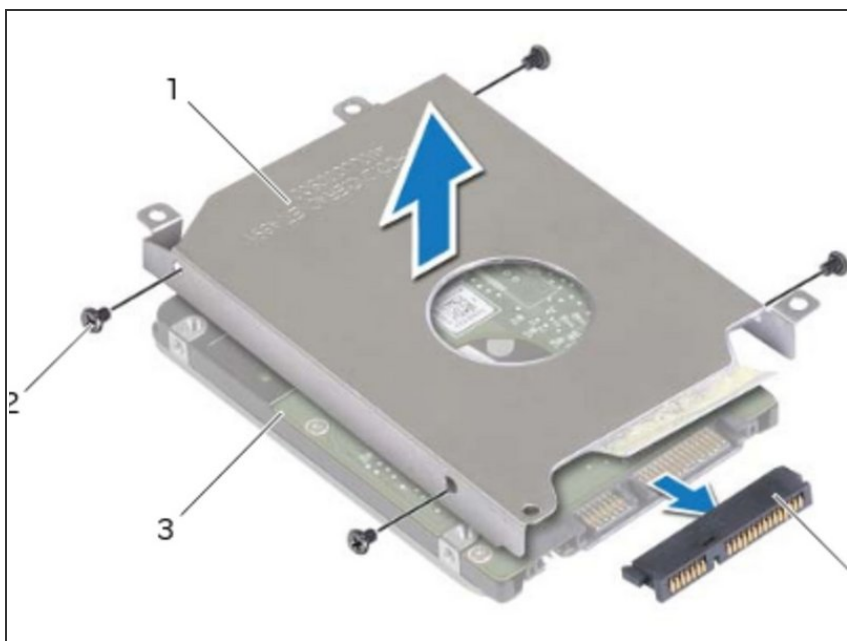
- Remove the screws that secure the hard-drive assembly to the computer base.

## Step 2 — Lifting the Hard-Drive Assembly



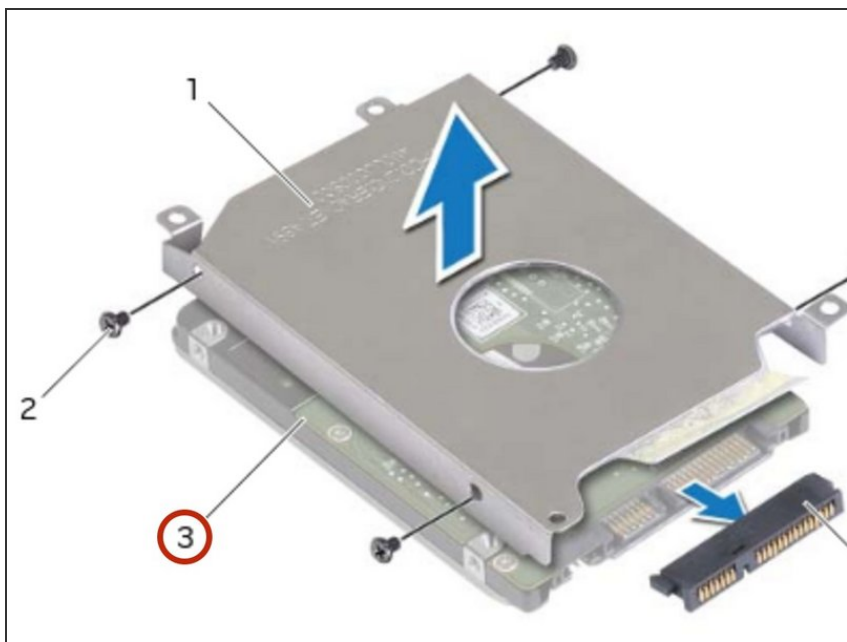
- Using the pull-tab, gently lift the hard-drive assembly.

## Step 3 — Lifting the Latch



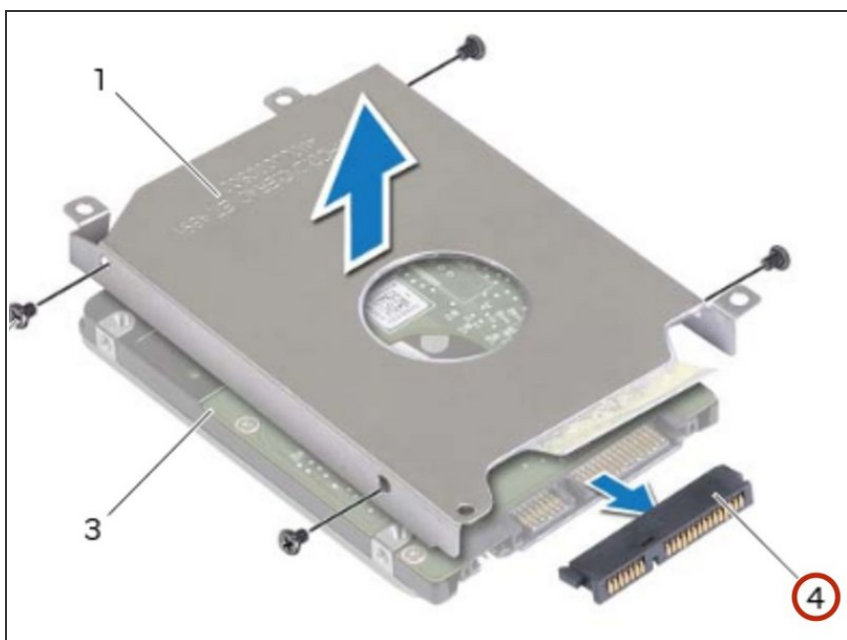
- Lift the latch and disconnect the hard-drive cable from the system board.

## Step 4 — Lifting the Hard-Drive Assembly



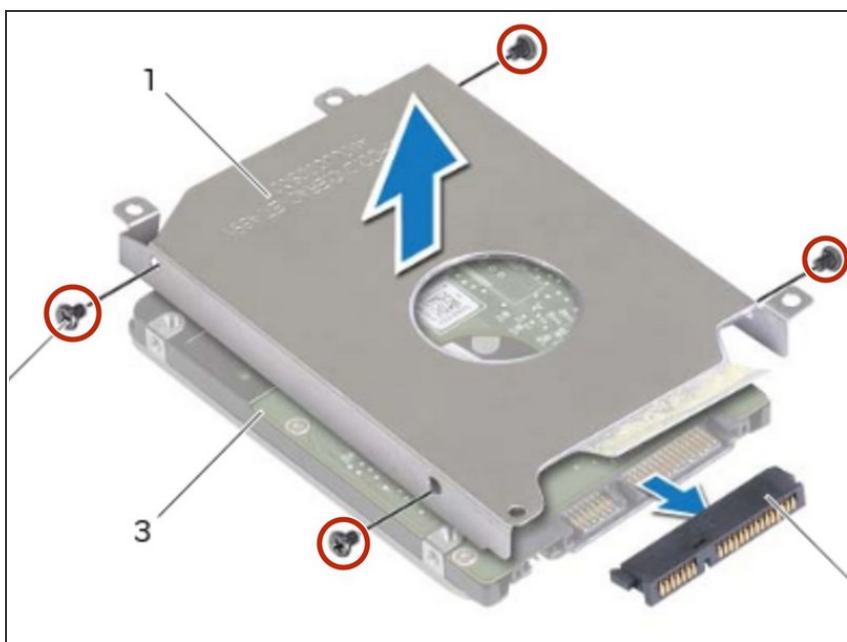
- Lift the hard-drive assembly off the computer base.

## Step 5 — Disconnecting the Interposer



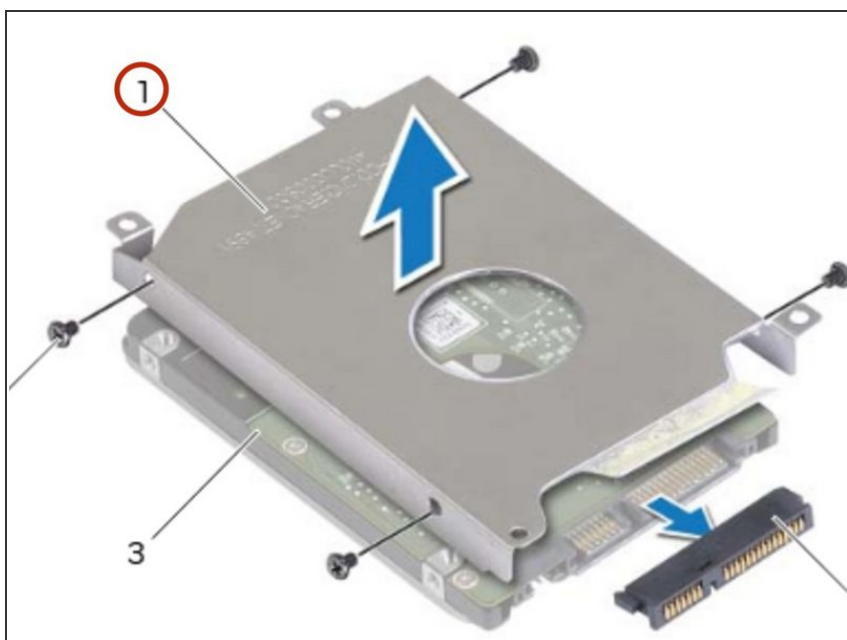
- Disconnect the interposer from the hard drive.

## Step 6 — Remove the Screws



- Remove the screws that secure the hard-drive bracket to the hard drive.

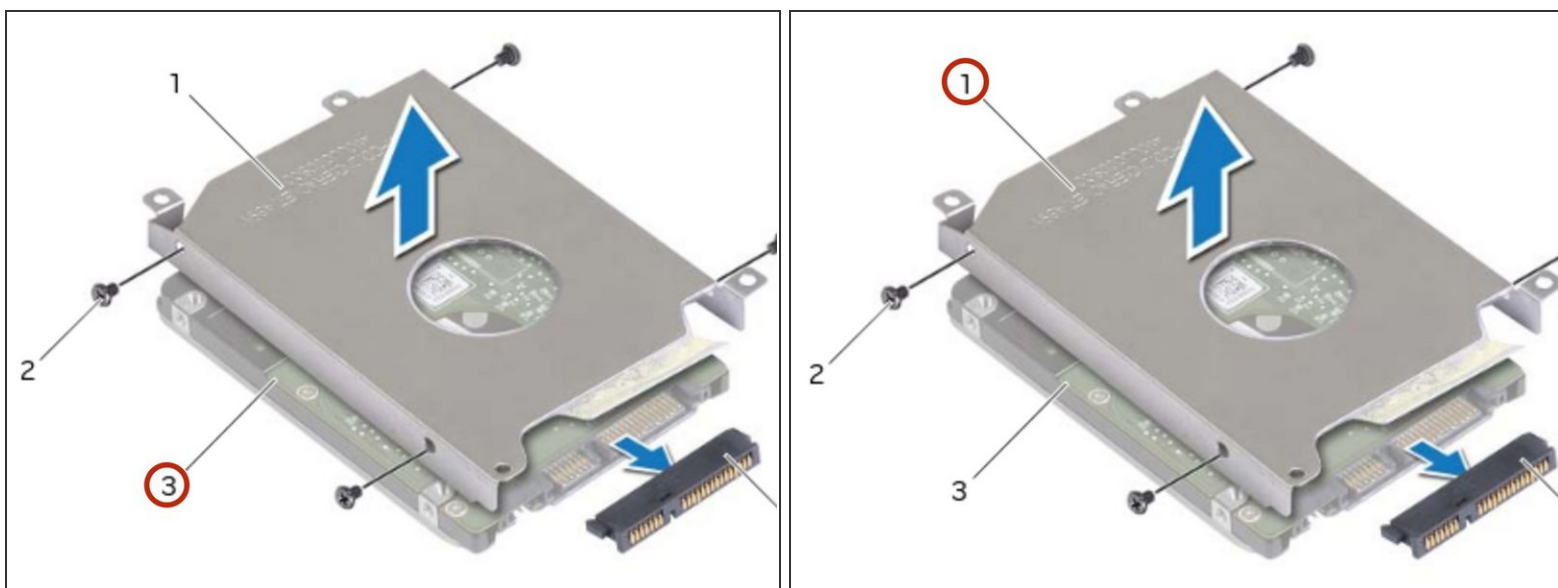
## Step 7 — Lifting the Hard-Drive Bracket



- Lift the hard-drive bracket off the hard drive.

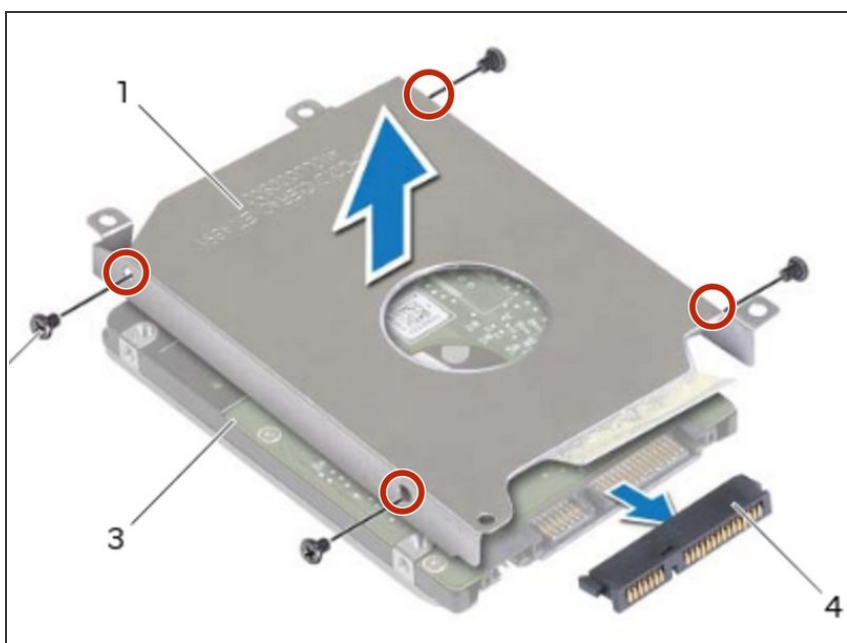


## Step 8 — Placing the Hard-Drive



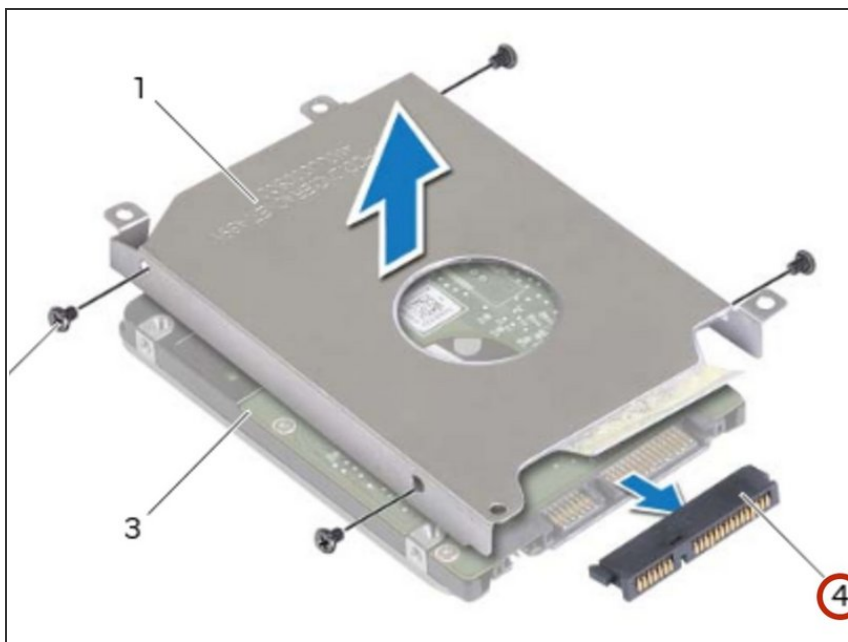
- Place the **NEW** hard drive into the hard-drive bracket.

## Step 9 — Align the Screw Holes



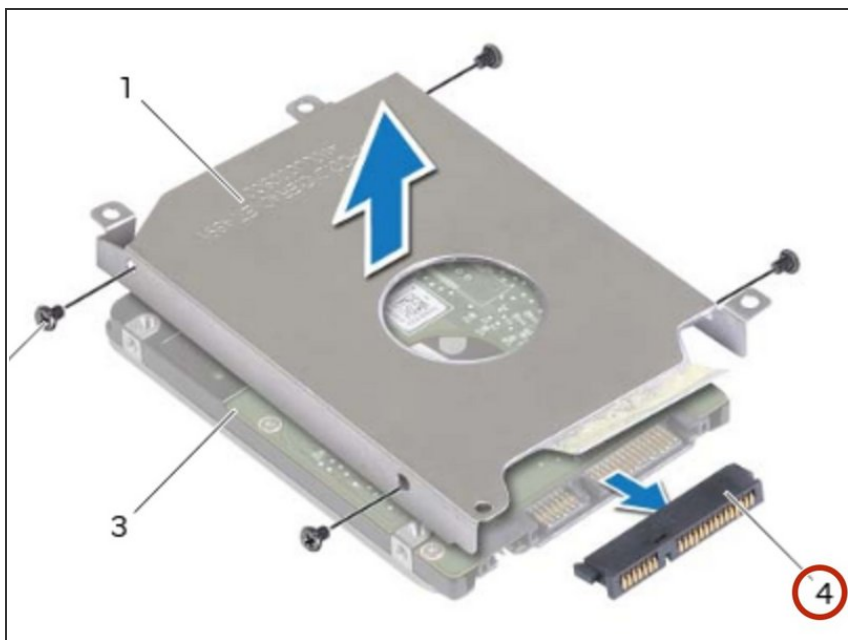
- Align the screw holes on the hard-drive bracket with the screw holes on the hard drive.

## Step 10 — Replace the Screws



- Replace the screws that secure the hard-drive bracket to the hard drive.

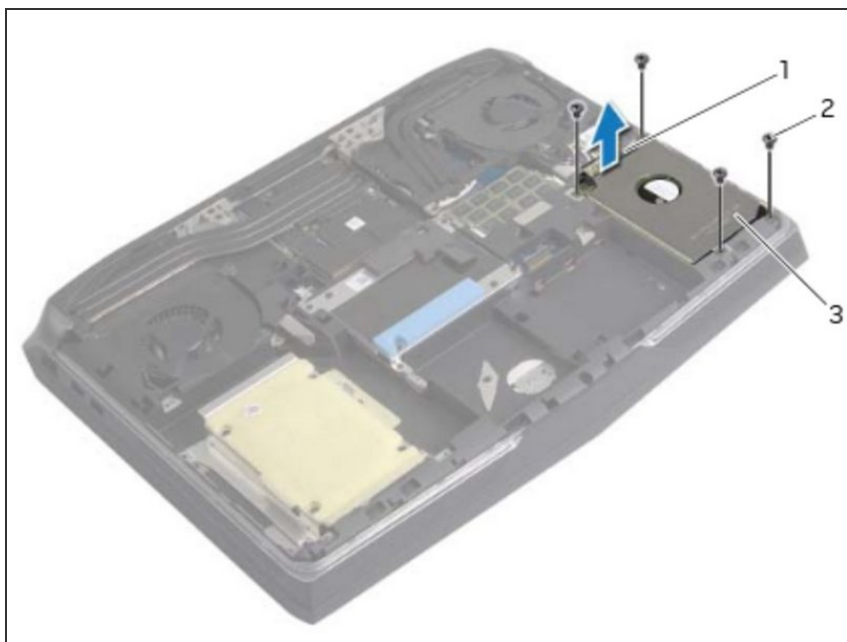
## Step 11 — Connect the Interposer



- Connect the interposer to the hard-drive.

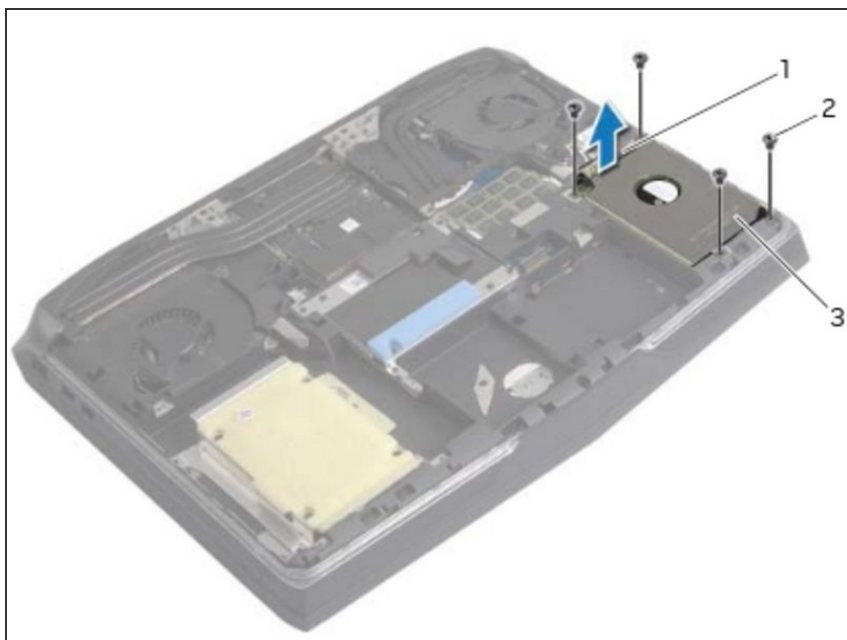


## Step 12 — Placing the Hard-Drive Assembly



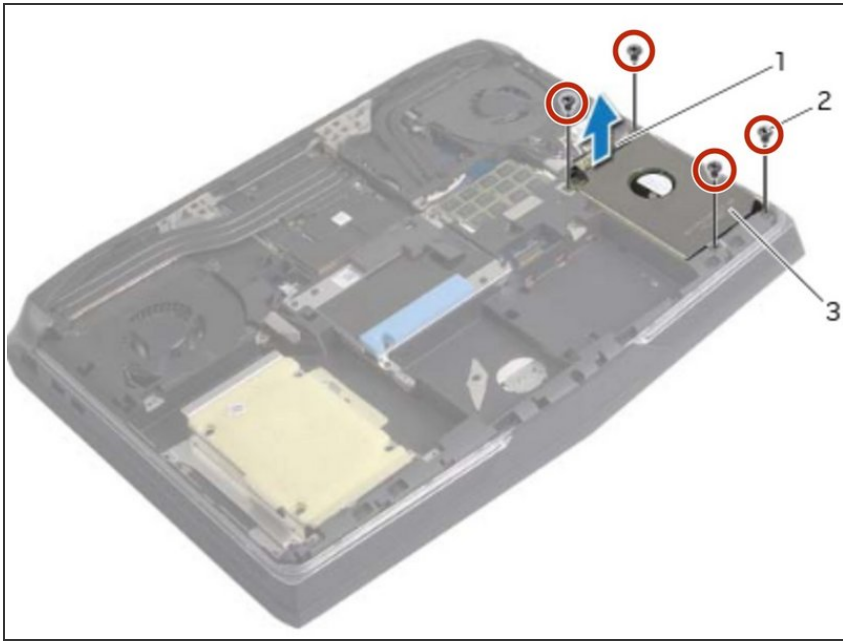
- Place the hard-drive assembly in the hard-drive bay.

## Step 13 — Aligning the Screw Holes



- Align the screw holes on the hard-drive assembly with the screw holes on the computer base.

## Step 14 — Replace the Screws



- Replace the screws that secure the hard-drive assembly to the computer base.

To reassemble your device, follow these instructions in reverse order.