



Page 1 of 14

---

## INTRODUCTION

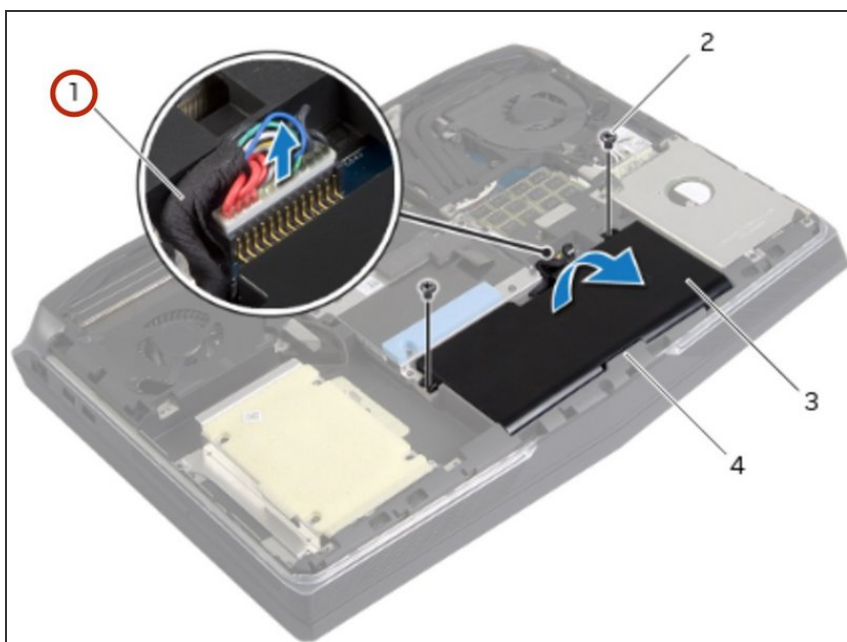
In this guide, we will show you how to remove and replace the Third Hard-Drive.



### TOOLS:

- [Pro Tech Toolkit](#) (1)
-

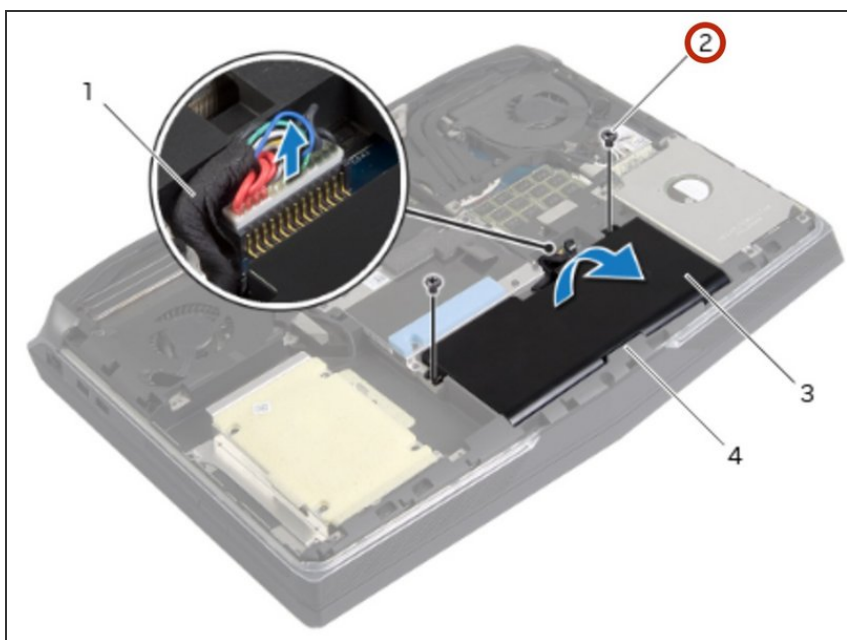
## Step 1 — Disconnecting the Battery Cable



**⚠ WARNING:** Before working inside your computer, read the safety information that shipped with your computer and follow the steps in [Before Working Inside Your Computer](#). After working inside your computer, follow the instructions in [After Working Inside Your Computer](#).

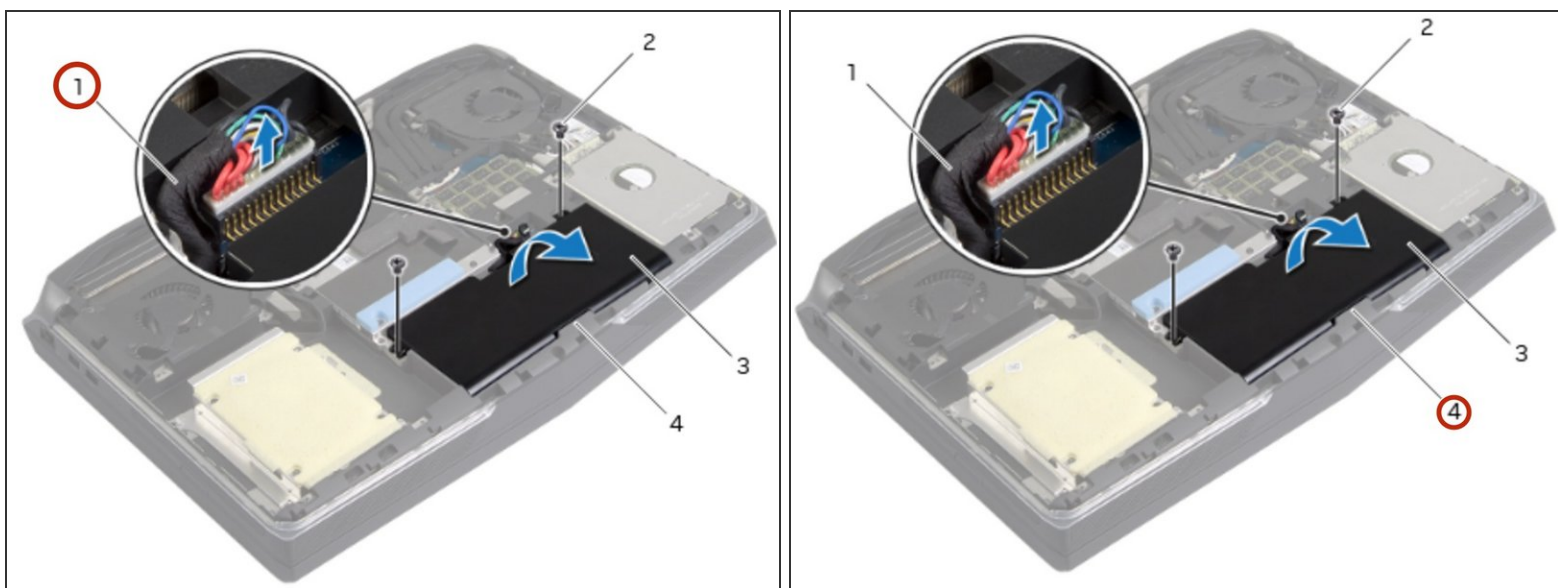
- Disconnect the battery cable from the system board.

## Step 2 — Remove the Screws



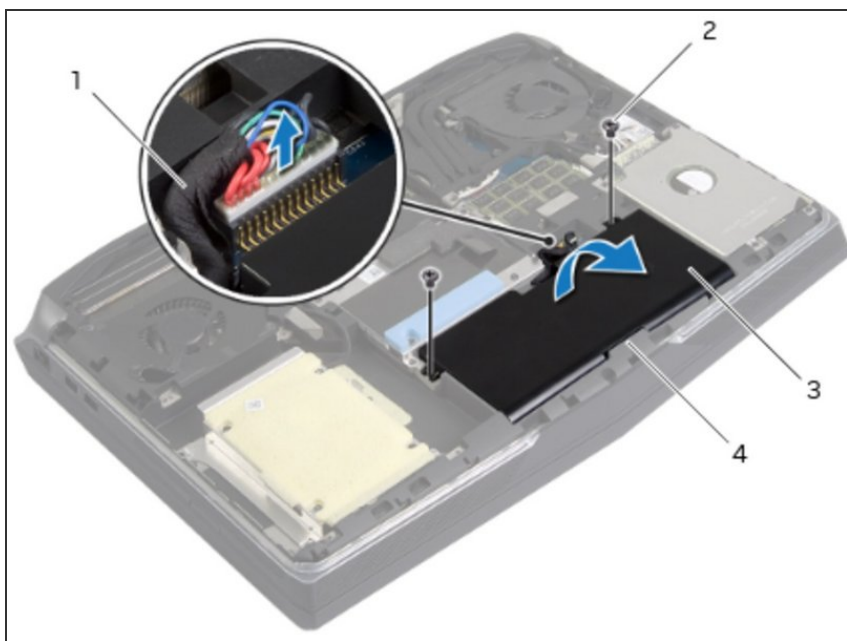
- Remove the screws that secure the battery to the computer base.

### Step 3 — Releasing the Battery



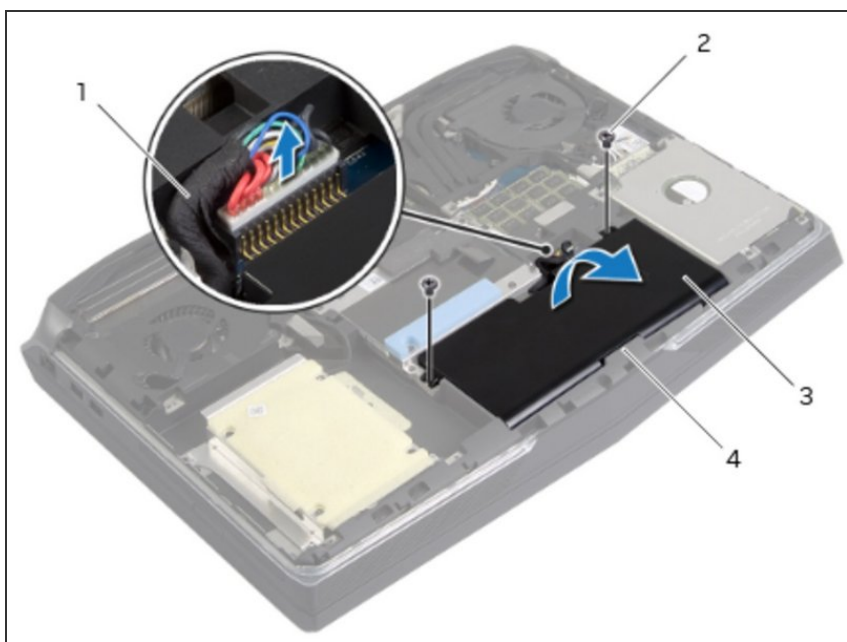
- Using the battery cable, lift and release the battery from the tabs on the computer base.

### Step 4 — Opening the Display



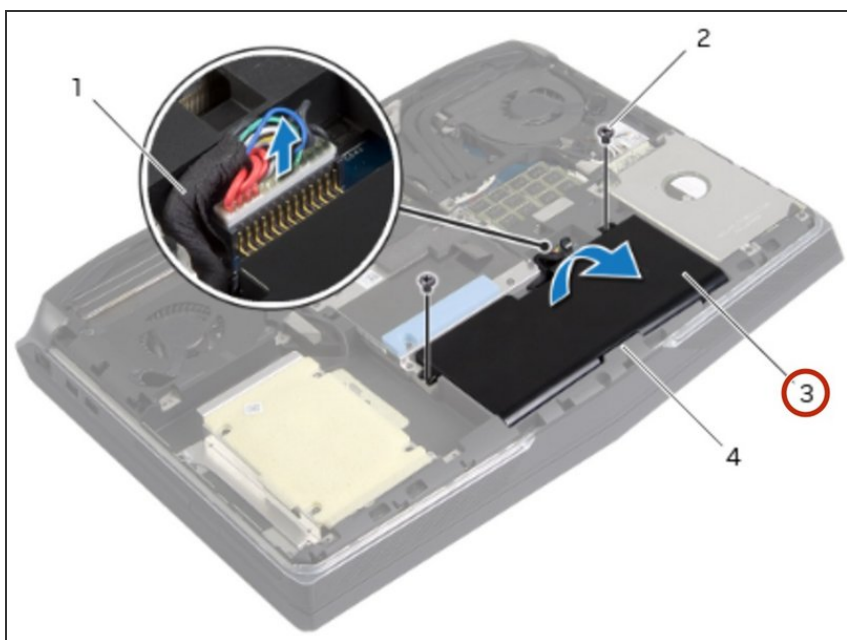
- Turn the computer over and open the display.

## Step 5 — Grounding the System Board



- Press and hold the power button for five seconds to ground the system board.

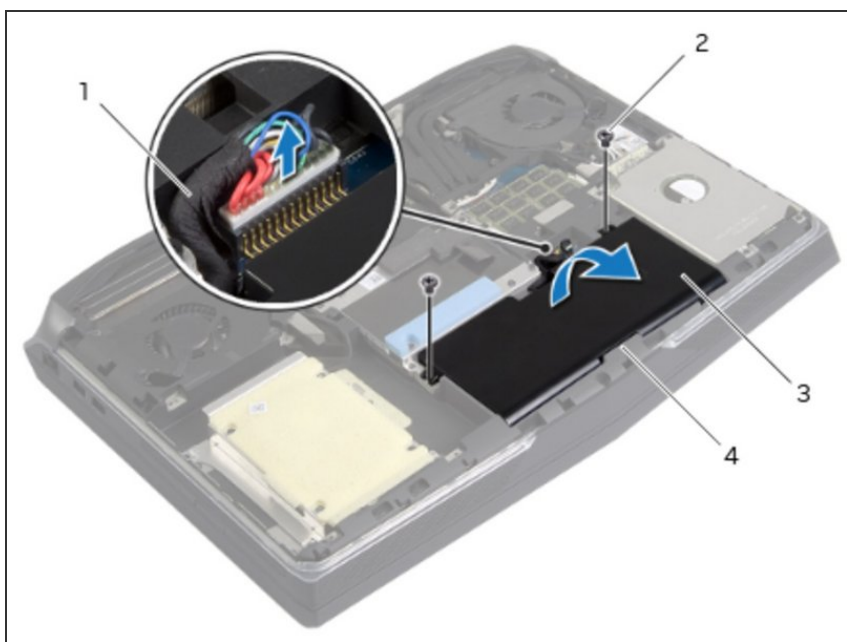
## Step 6 — Slide the New Battery



- Slide the **NEW** battery under the tabs on the computer base.

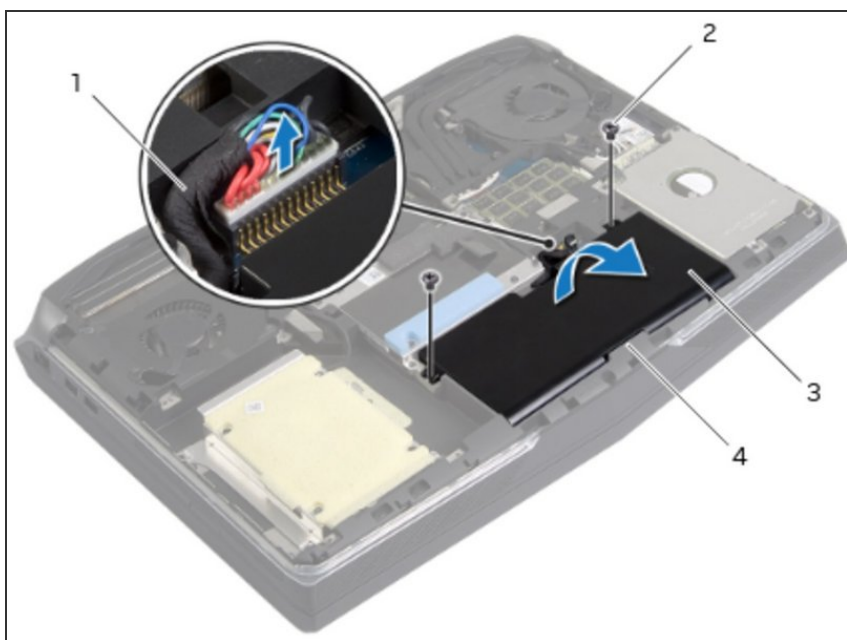


## Step 7 — Aligning the Screw Holes



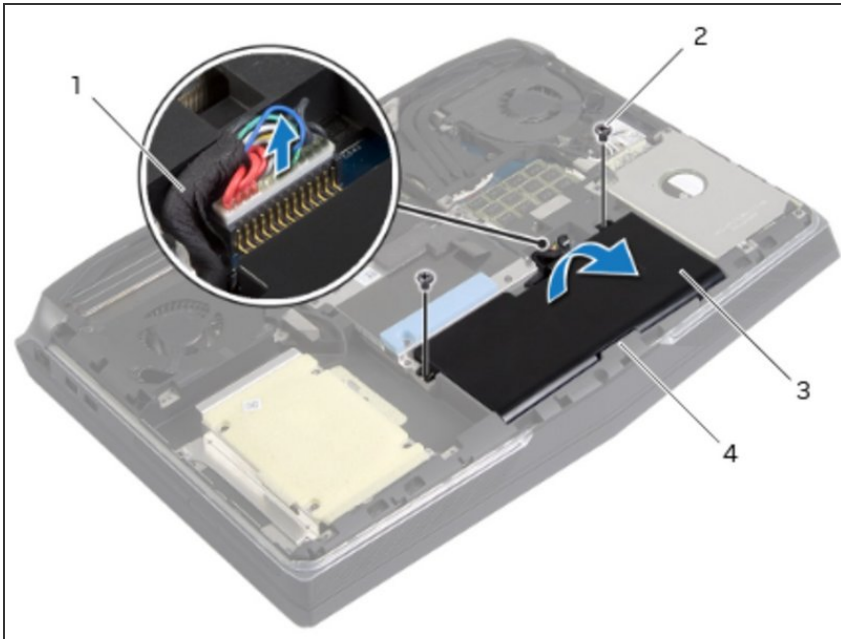
- Align the screw holes on the battery with the screw holes on the computer base.

## Step 8 — Replace the Screws



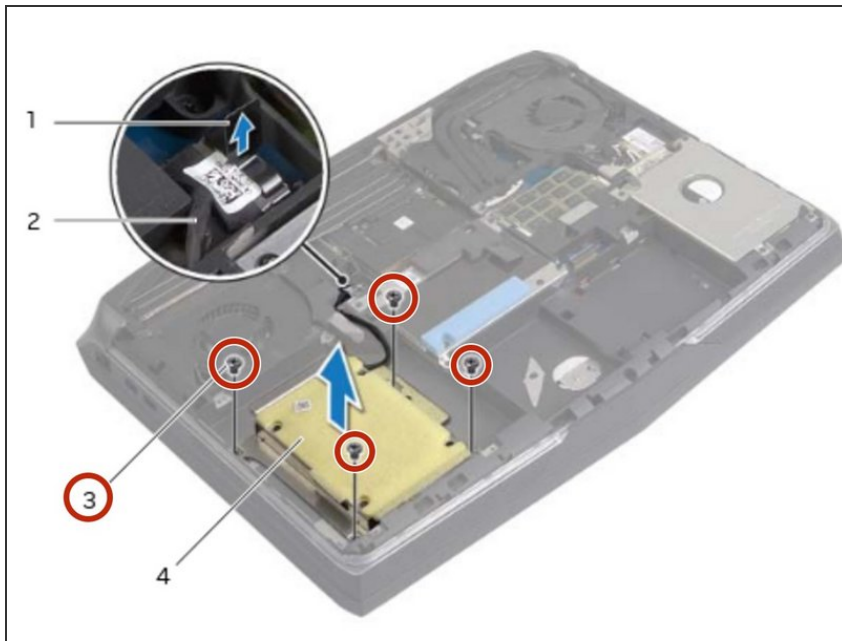
- Replace the screws that secure the battery to the computer base.

## Step 9 — Connect the Battery Cable



- Connect the battery cable to the system board.

## Step 10 — Remove the Screws



**⚠ WARNING:** Before working inside your computer, read the safety information that shipped with your computer and follow the steps in [Before Working Inside Your Computer](#). After working inside your computer, follow the instructions in [After Working Inside Your Computer](#).

**⚠ CAUTION:** To avoid data loss, do not remove the hard drive while the computer is On or in Sleep state.

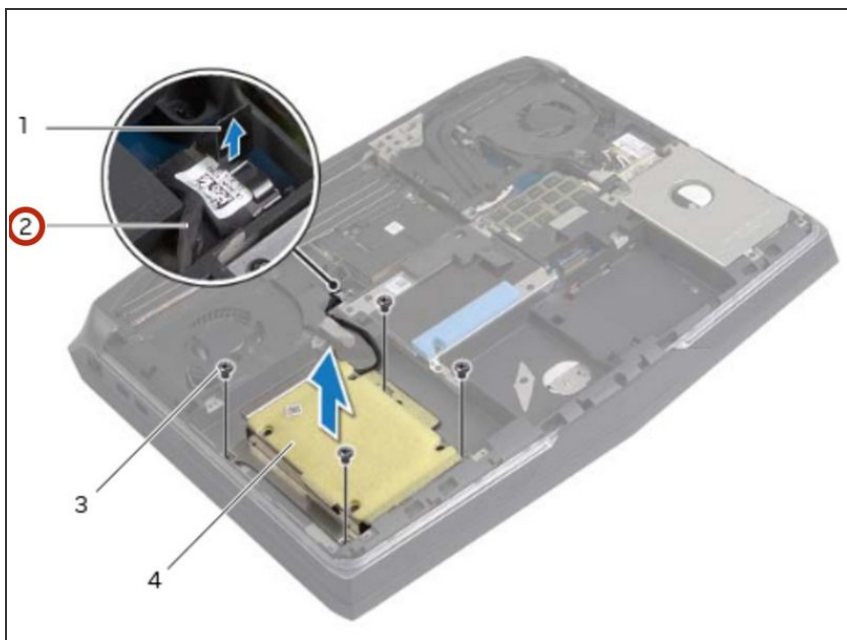
**⚠ CAUTION:** Hard drives are extremely fragile. Exercise care when handling the hard drive.

**i NOTE:** The media bay can accommodate an optical drive, a hard drive, or a solid-state drive.

- Remove the screws that secure the tertiary hard drive assembly to the computer base.

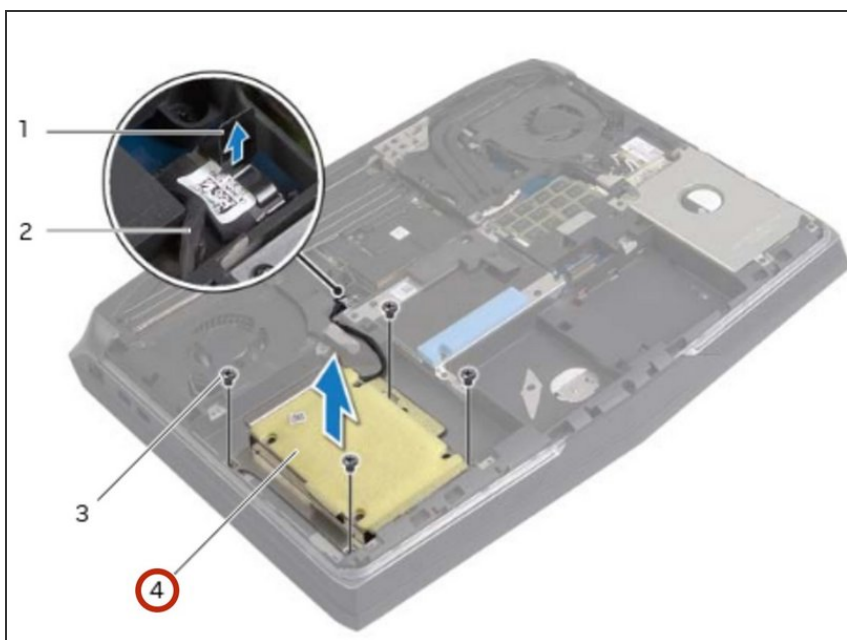


## Step 11 — Disconnecting the Hard-Drive Cable



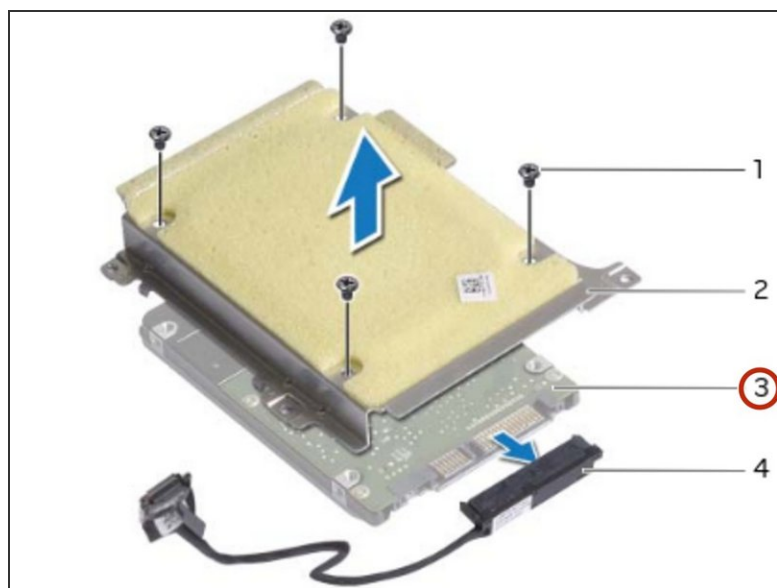
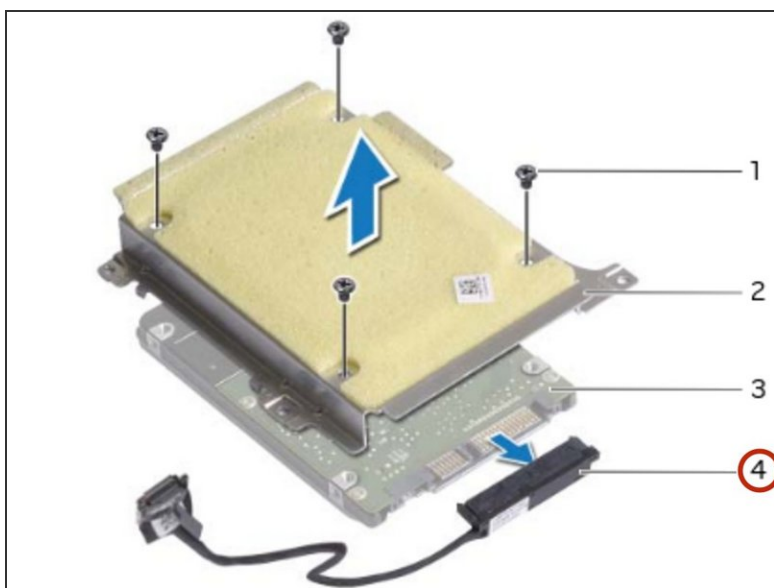
- Using the pull-tab, disconnect the hard-drive cable from the system board.

## Step 12 — Lifting the Hard-Drive Assembly



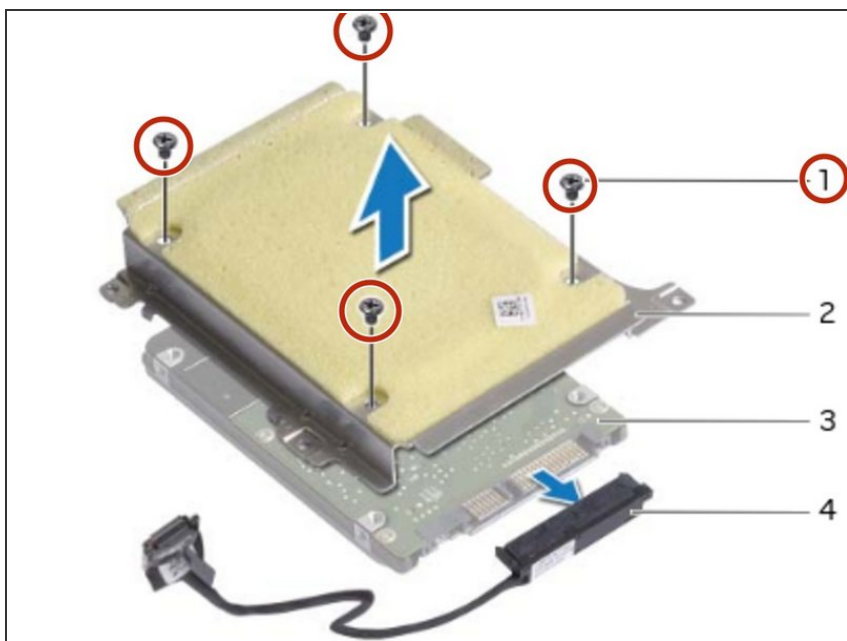
- Lift the hard-drive assembly off the computer base.

## Step 13 — Disconnect the Interposer



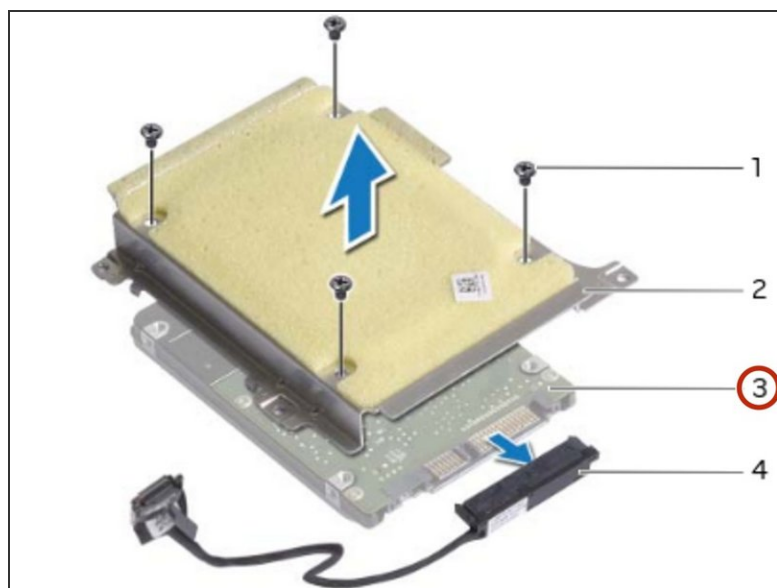
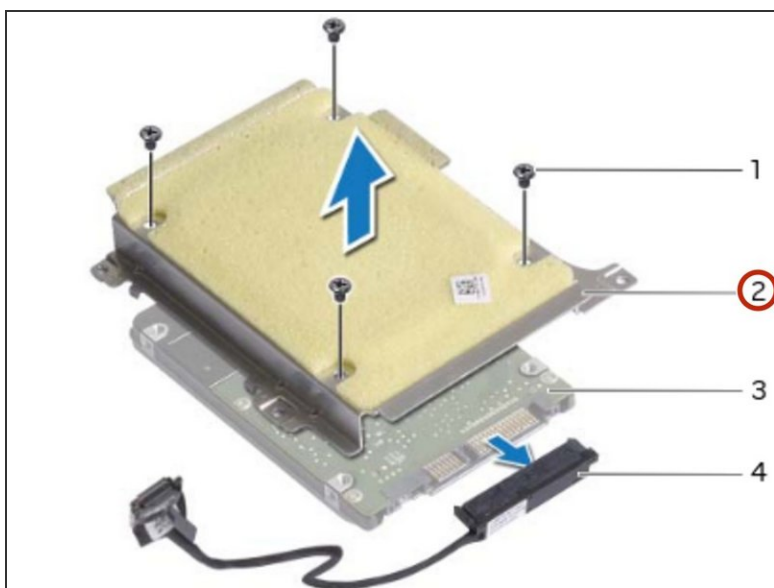
- Disconnect the interposer from the hard drive.

## Step 14 — Remove the Screws



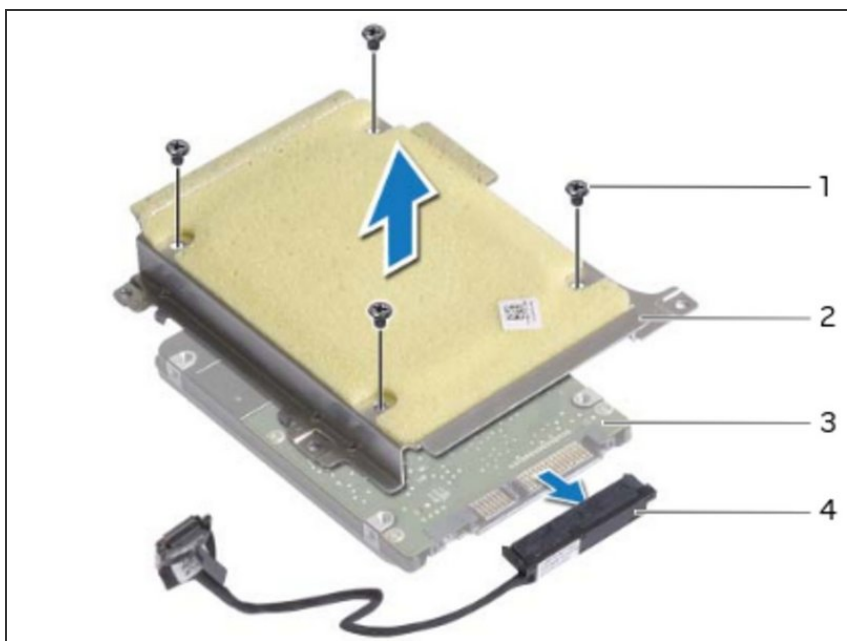
- Remove the screws that secure the hard-drive bracket to the hard drive.

## Step 15 — Lifting the Hard-Drive Bracket



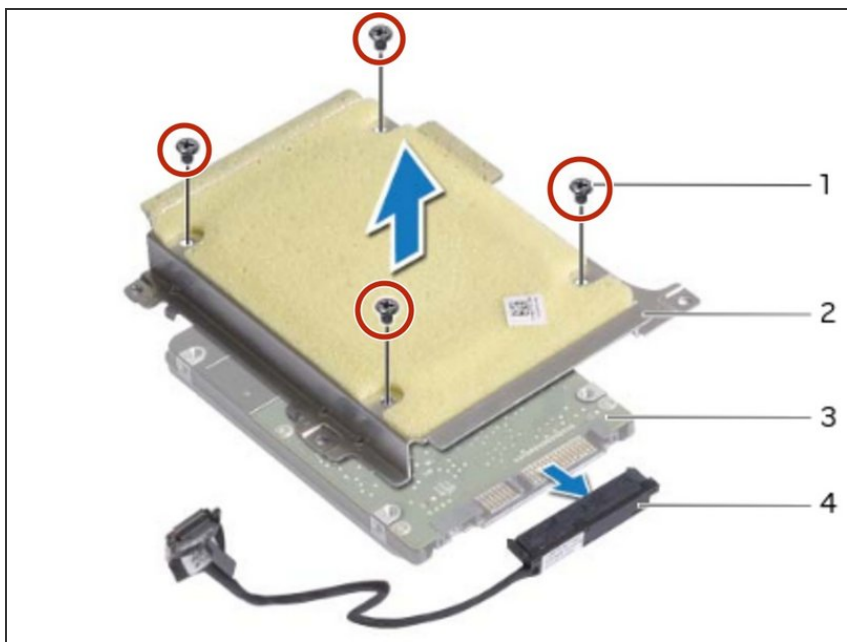
- Lift the hard-drive bracket off the hard drive.

## Step 16 — Align the Screw Holes



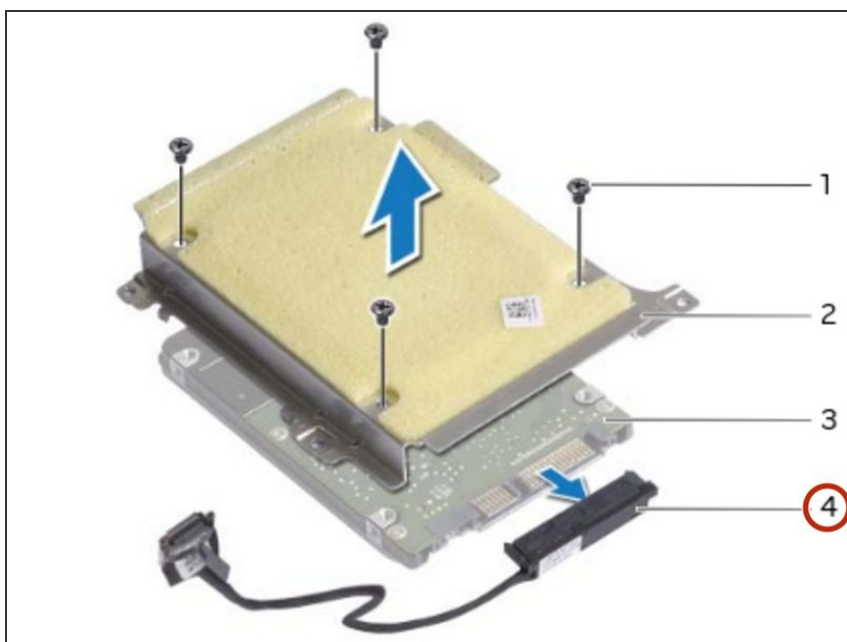
- Align the screw holes on the **NEW** hard-drive bracket with the screw holes on the hard drive.

## Step 17 — Replace the Screws



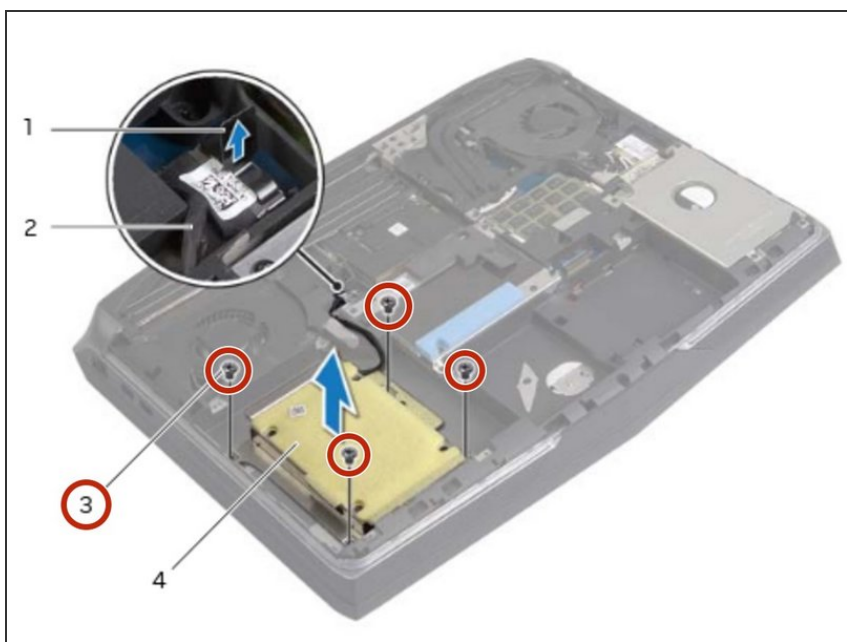
- Replace the screws that secure the hard-drive bracket to the hard drive.

## Step 18 — Connect the Interposer



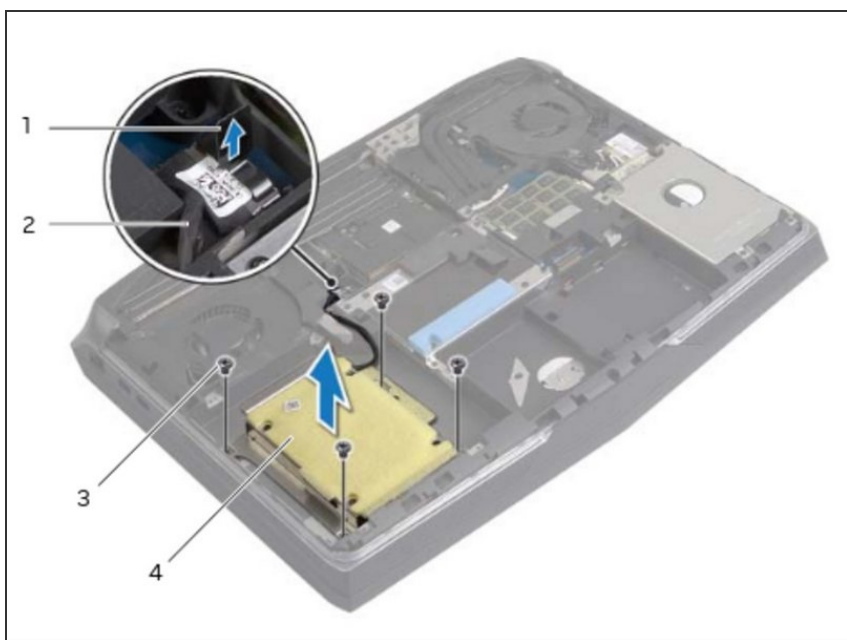
- Connect the interposer to the hard drive.

## Step 19 — Align the Screw Holes



- Align the screw holes on the hard-drive assembly with the screw holes on the computer base.

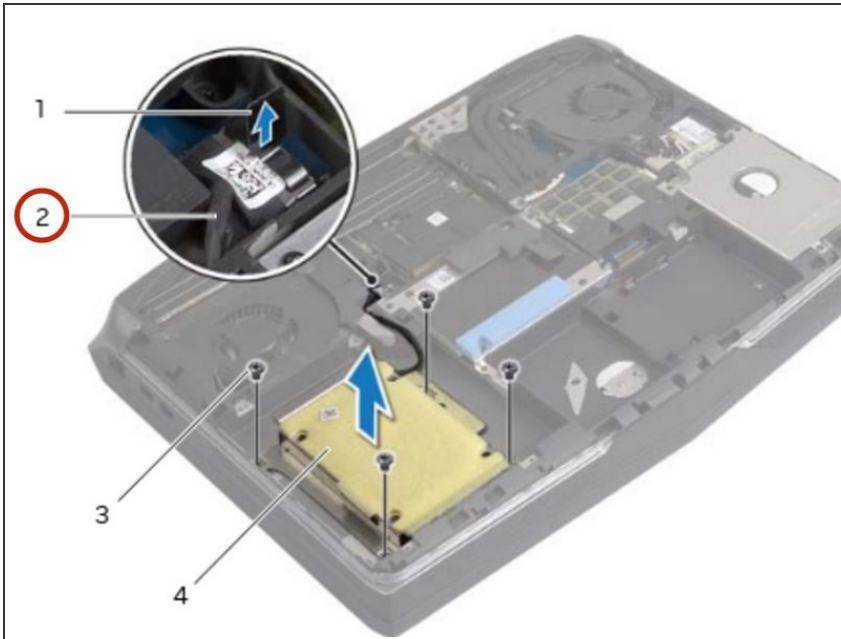
## Step 20 — Replace the Screws



- Replace the screws that secure the hard-drive assembly to the computer base.



## Step 21 — Connecting the Hard-Drive Cable



- Connect the hard-drive cable to the system board.

To reassemble your device, follow these instructions in reverse order.