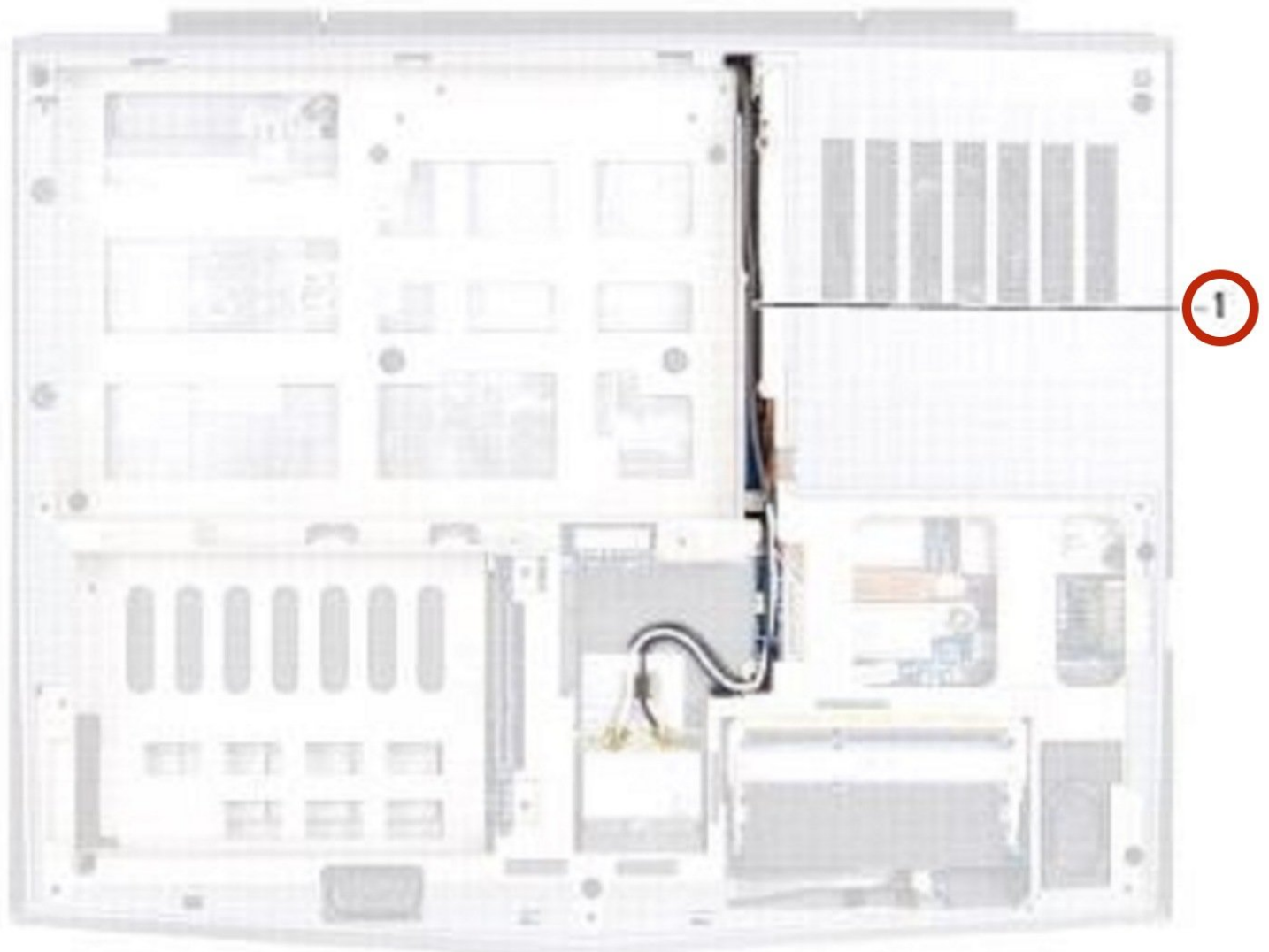




# Dell Alienware M11x R3 Display Assembly Replacement

How to replace the display assembly on your Alienware M11x R3.

Written By: Terrence15



---

## INTRODUCTION

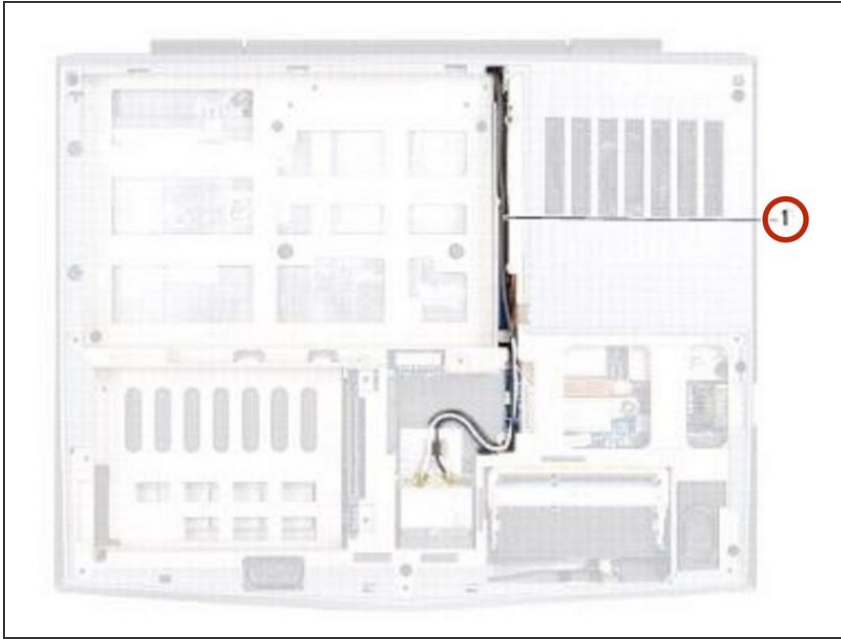
In this guide, we will show you how to remove and replace the Display Assembly.



### TOOLS:

- [Essential Electronics Toolkit](#) (1)
-

## Step 1 — Disconnect the Antenna Cables

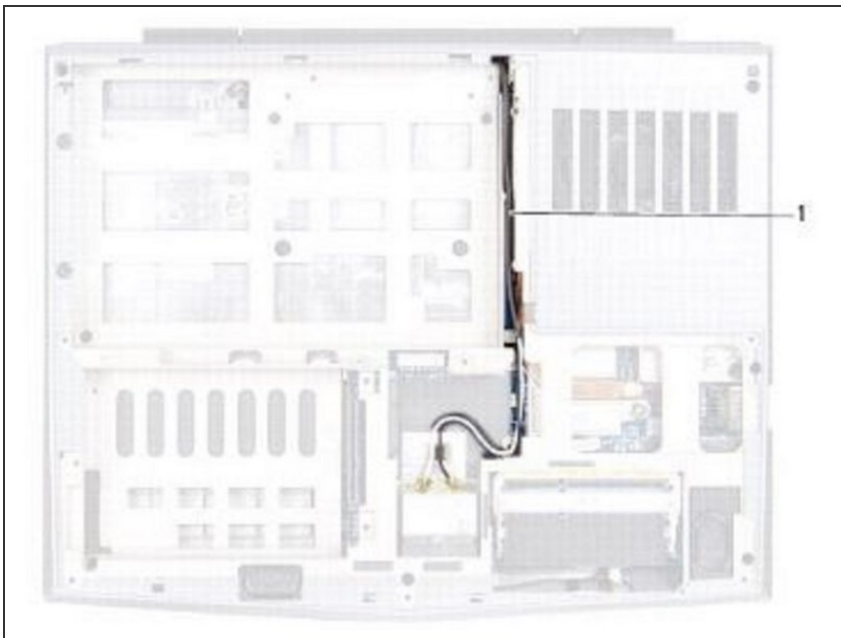


**⚠ WARNING:** Before working inside your computer, read the safety information that shipped with your computer.

**⚠ CAUTION:** To avoid electrostatic discharge, ground yourself by using a wrist grounding strap or by periodically touching an unpainted metal surface (such as a connector on your computer).

- Disconnect the antenna cables from the Mini-Card(s).

## Step 2 — Note the Routing



- Note the routing of the Mini-Card antenna cables and remove them from the routing guides on the computer base.

### Step 3 — Turn the Computer Over



- Turn the computer over and open the display as far as possible.

### Step 4 — Disconnect the Display Cable



- Pull the pull-tab to disconnect the display cable from the connector on the system board.

## Step 5 — Remove the Screws



- Remove the four screws that secure the display assembly to the computer base.

## Step 6 — Sliding the Cables Out



- Gently slide the Mini-Card antenna cables out through the slot on the computer base.

## Step 7 — Lifting the Display Assembly



- Lift the display assembly off the computer.

## Step 8 — Slide the Antenna Cables



- Slide the antenna cables in through the slot on the computer base.



## Step 9 — Positioning the Display Assembly



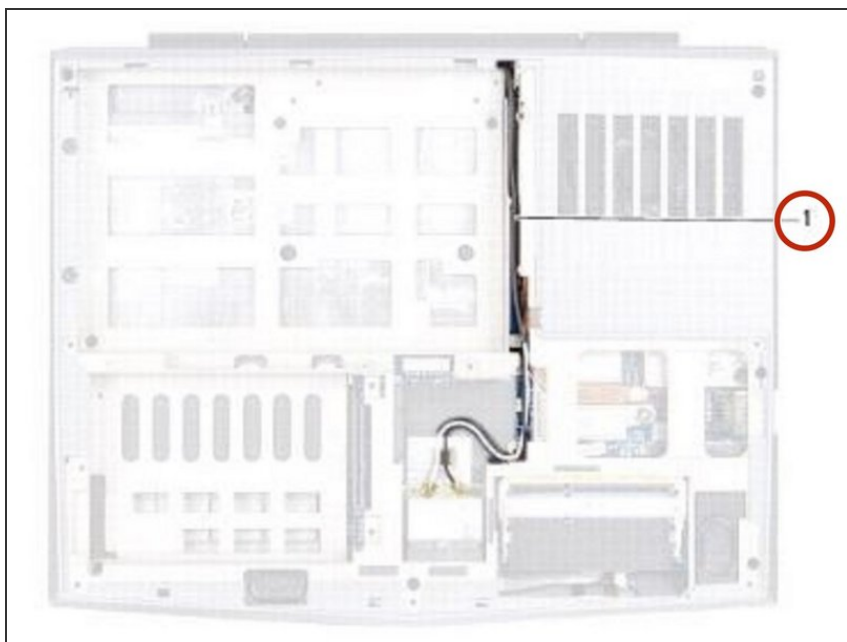
- Place the **NEW** display assembly in position and replace the four screws that secure the display assembly to the computer base.

## Step 10 — Connect the Display Cable



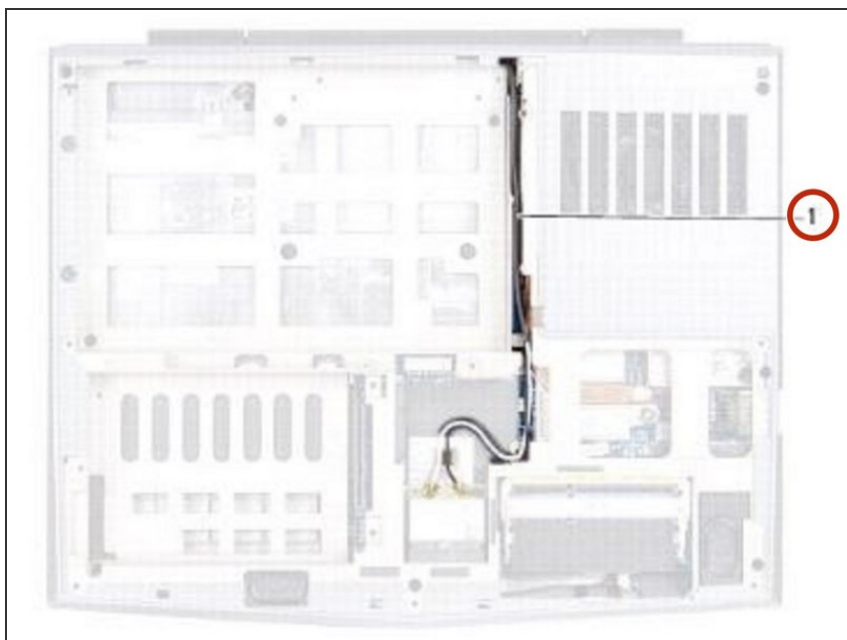
- Connect the display cable to the connector on the system board.

## Step 11 — Routing the Antenna Cables



- Turn the computer over and route the Mini-Card antenna cables through the routing guides on the computer base.

## Step 12 — Connect the Antenna Cables



- Connect the Mini-Card antenna cables to the Mini-Card(s).

To reassemble your device, follow these instructions in reverse order.