



Dell Alienware M11x R3 Wi-Fi Card Replacement

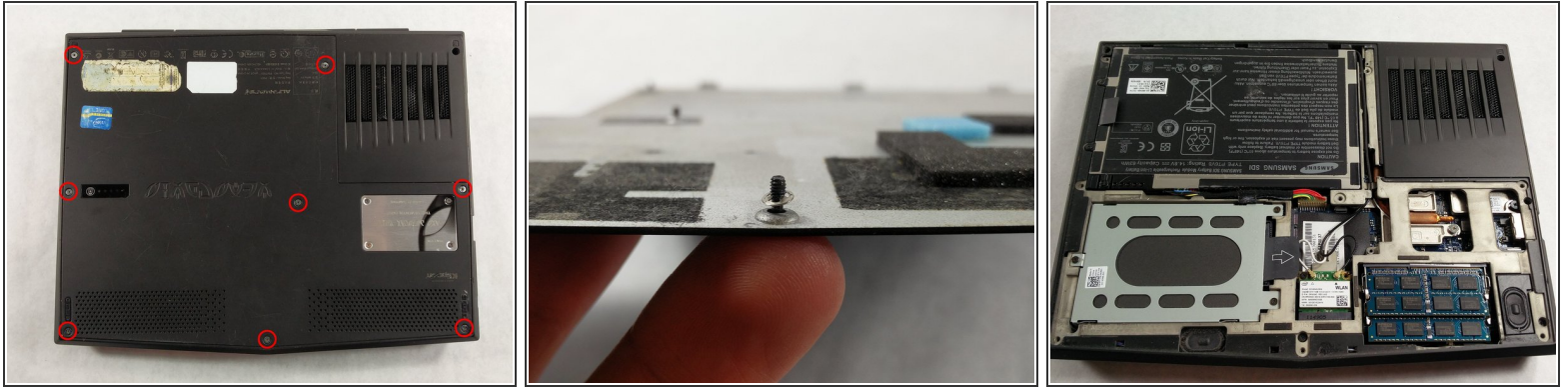
Written By: Richard Maurice



 **TOOLS:**

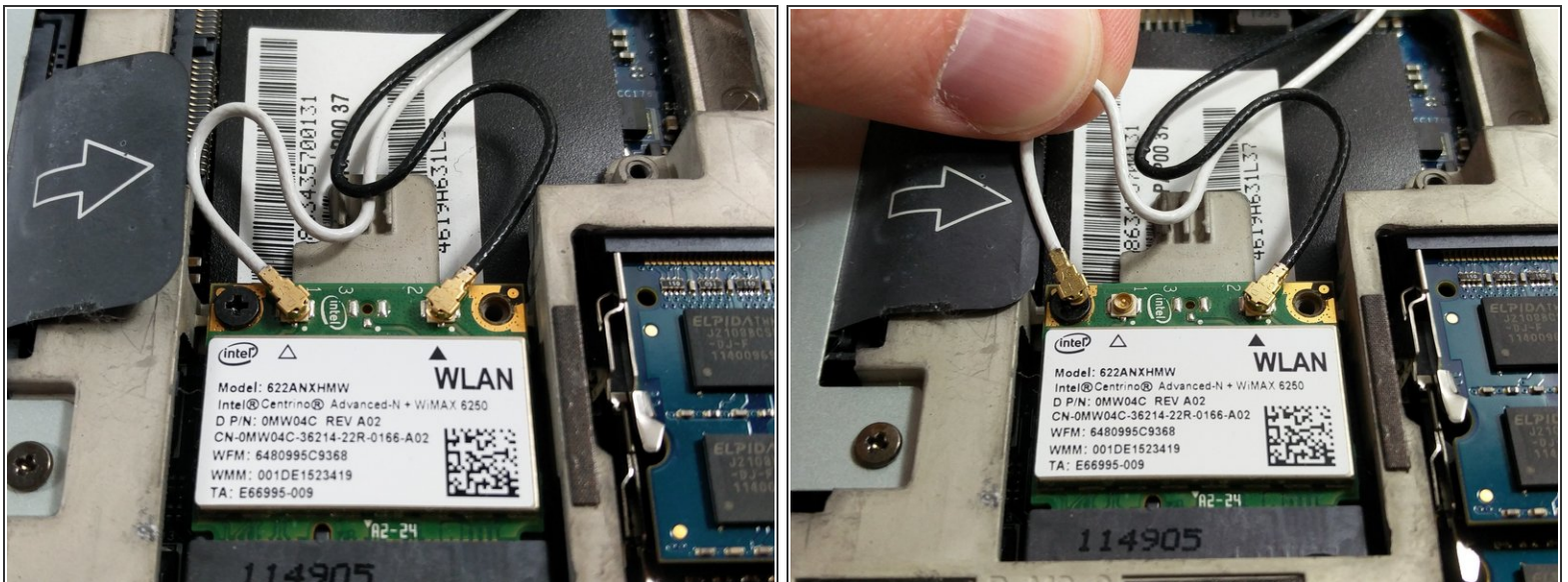
- **JIS #1** (1)
-

Step 1 — Lower Case



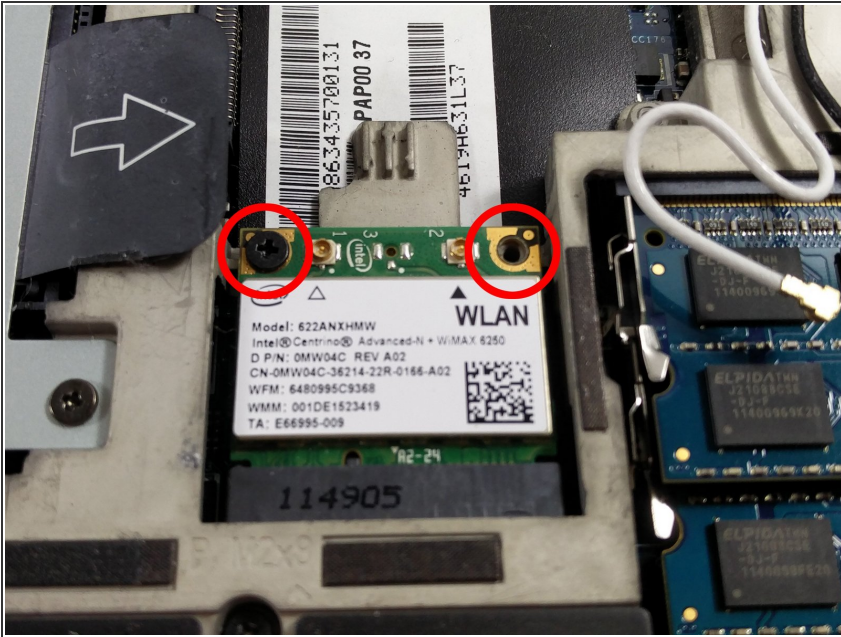
- Loosen the 8 retaining screws on the base of the computer.
- ⓘ The screws have retaining washers to hold them in place, so they won't actually separate from the base plate.
- Remove the bottom cover from the laptop.

Step 2 — Wi-Fi Card



- Your Wi-Fi card will have two wires attached and two screws attached. First, gently remove the two wires by pulling **up**.

Step 3



- With the two wires removed, remove the two screws holding the Wi-Fi card down.

Step 4



- Your Wi-Fi card will pop up, ready for replacing!

To reassemble your device, follow these instructions in reverse order.