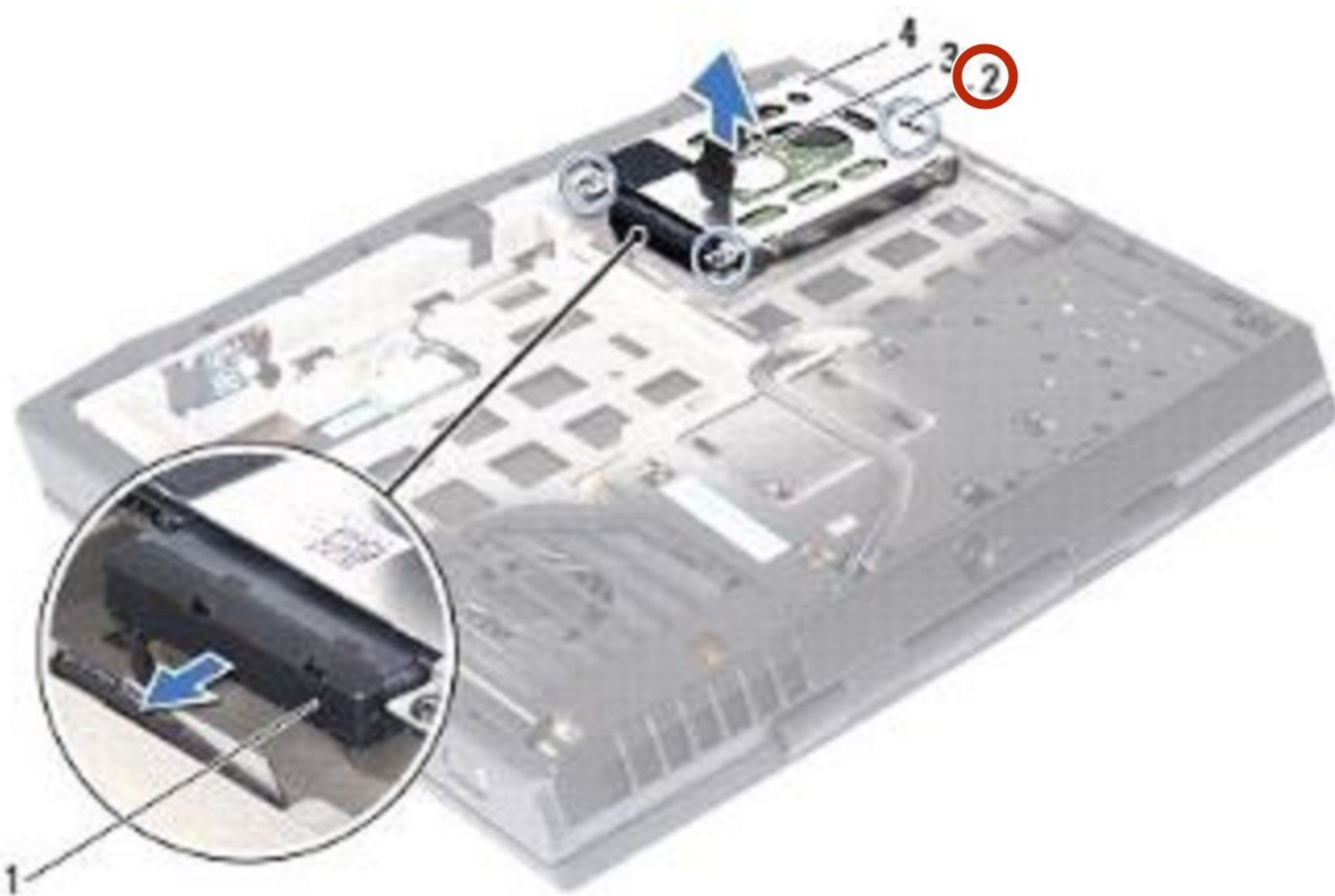




Dell Alienware M14x Hard-Drive Replacement

How to replace the hard drive in a Dell Alienware M14x.

Written By: Terrence15



INTRODUCTION

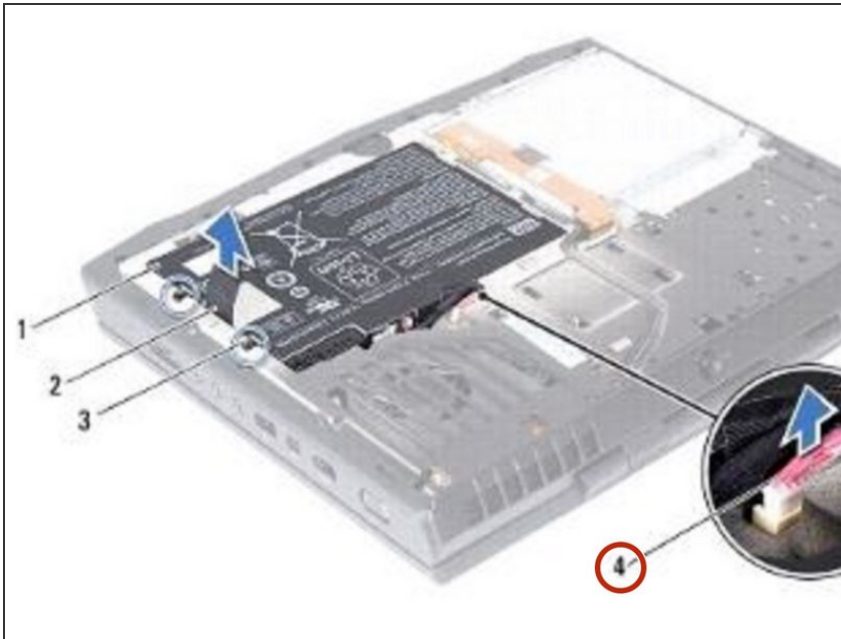
In this guide, we will show you how to remove and replace the Hard Drive.



TOOLS:

- [Essential Electronics Toolkit](#) (1)
-

Step 1 — Disconnecting the Battery-Pack Cable

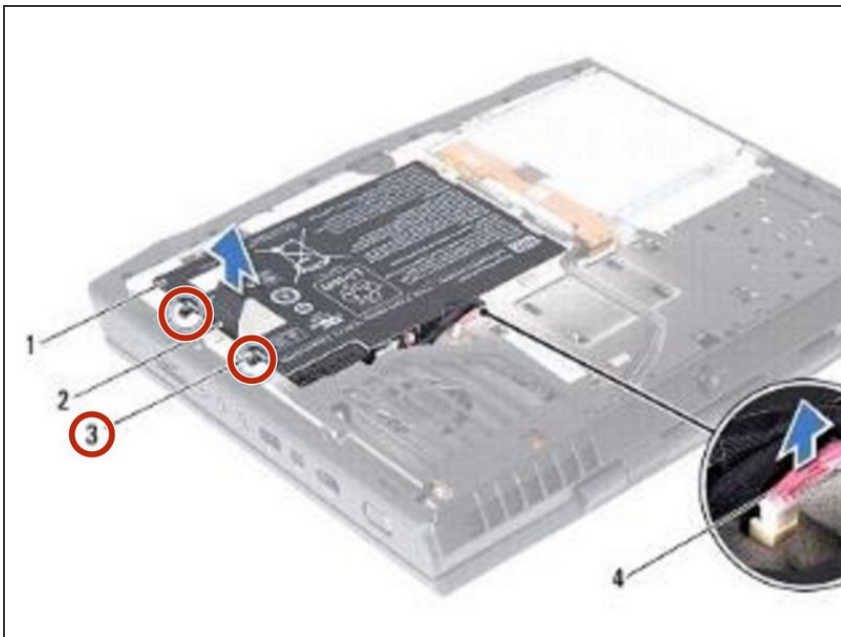


⚠ WARNING: Before working inside your computer, read the safety information that shipped with your computer.

⚠ CAUTION: To avoid electrostatic discharge, ground yourself by using a wrist grounding strap or by periodically touching an unpainted metal surface (such as a connector on your computer).

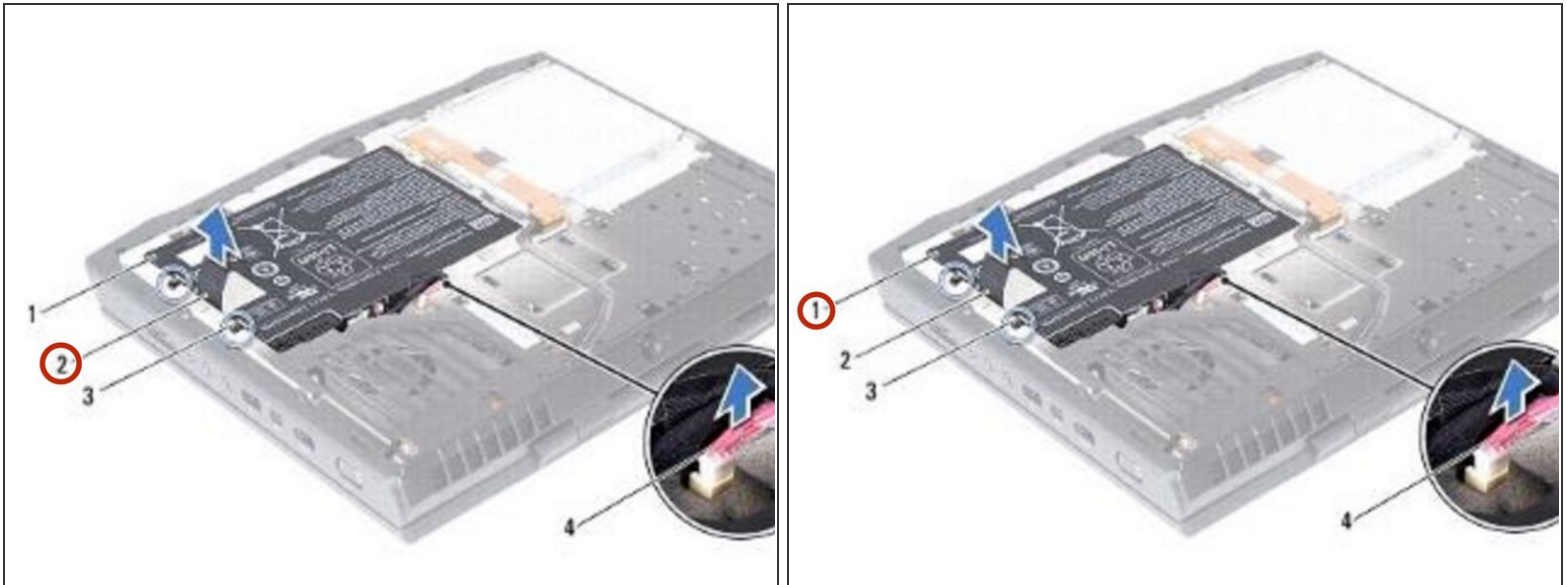
- Disconnect the battery-pack cable from the connector on the system board.

Step 2 — Loosen the Two Captive Screws



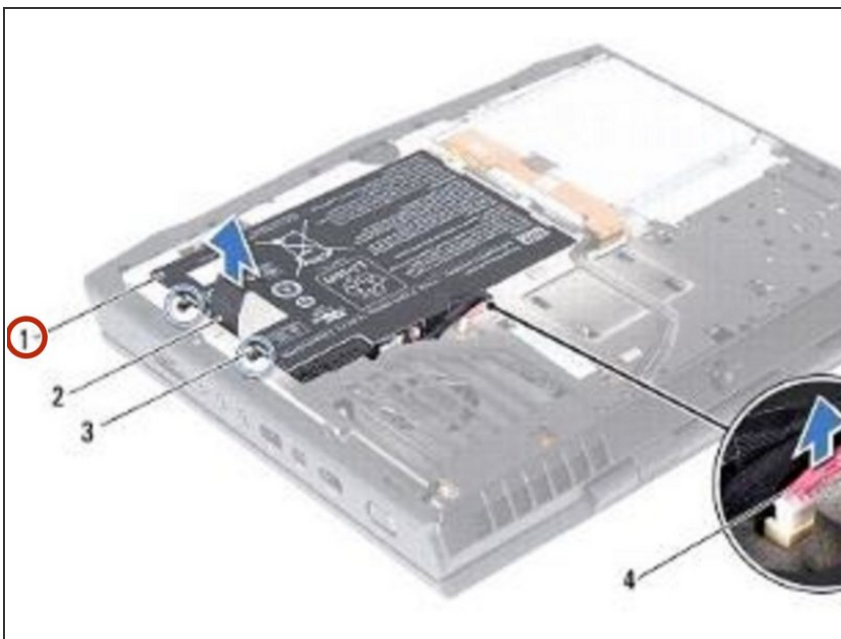
- Loosen the two captive screws that secure the battery pack to the computer base.

Step 3 — Lifting the Battery Pack



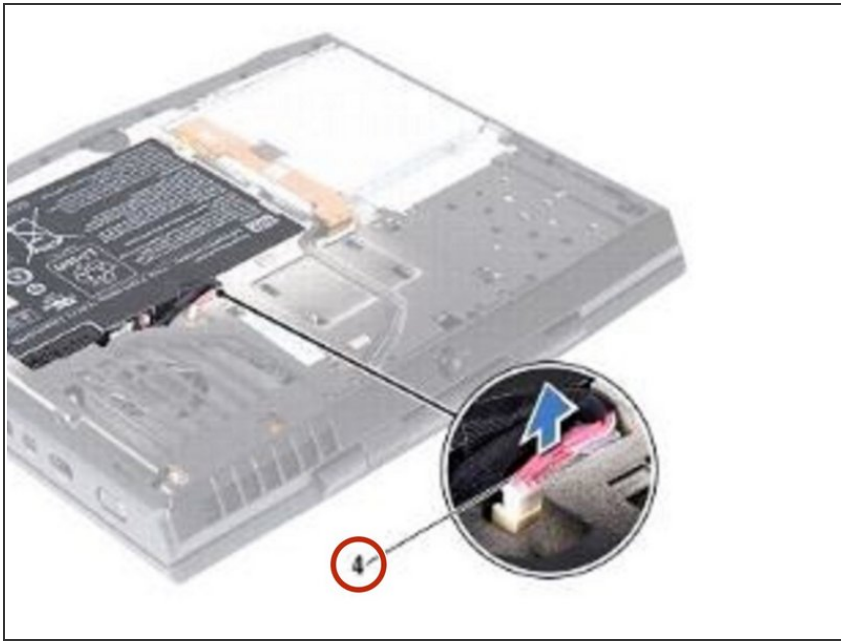
- Using the pull-tab, lift the battery pack off the computer base.

Step 4 — Securing the Battery Pack



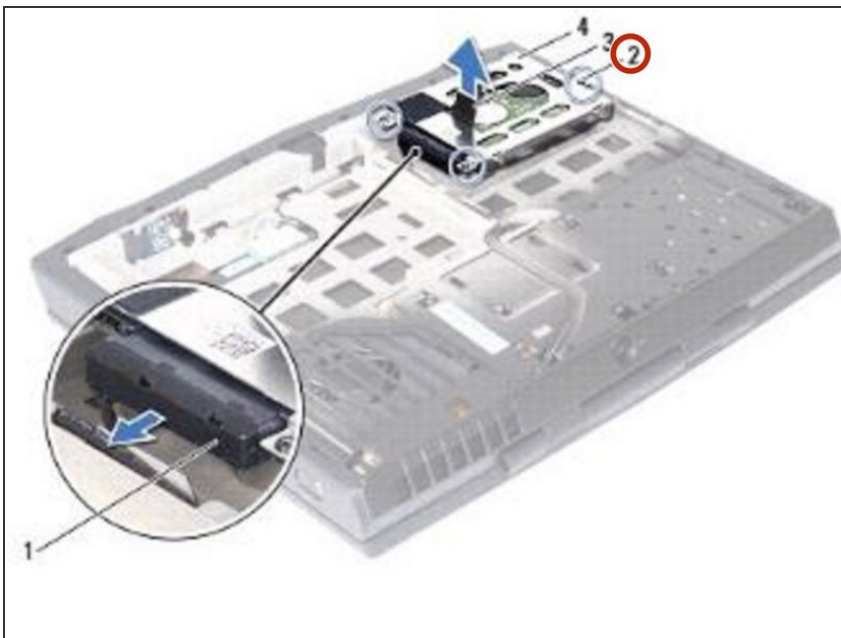
- Place the **NEW** battery pack in the battery bay and tighten the two captive screws that secure the battery pack to the computer base.

Step 5 — Connecting the Battery-Pack Cable



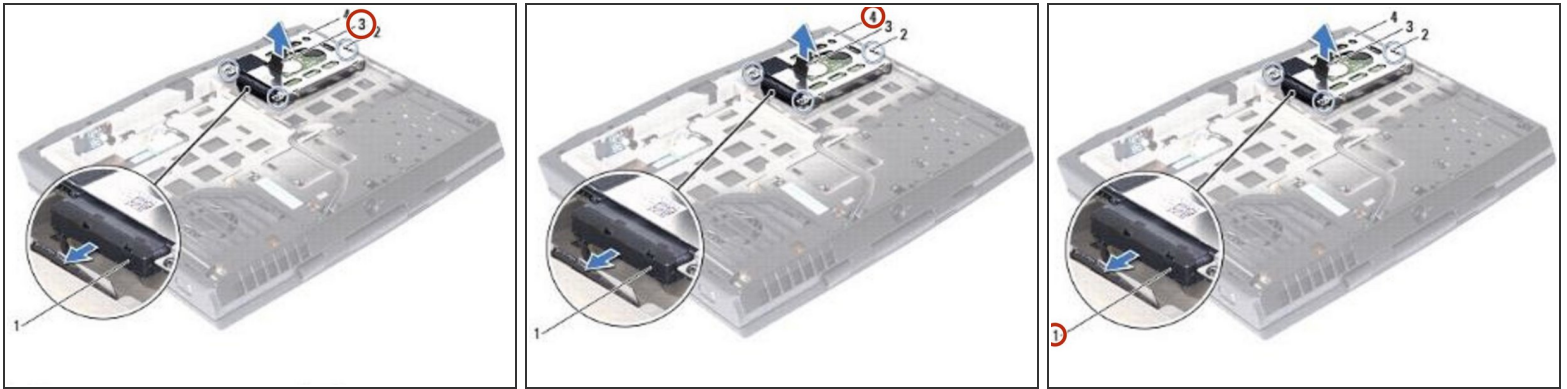
- Connect the battery-pack cable to the connector on the system board.

Step 6 — Loosen the Three Captive Screws



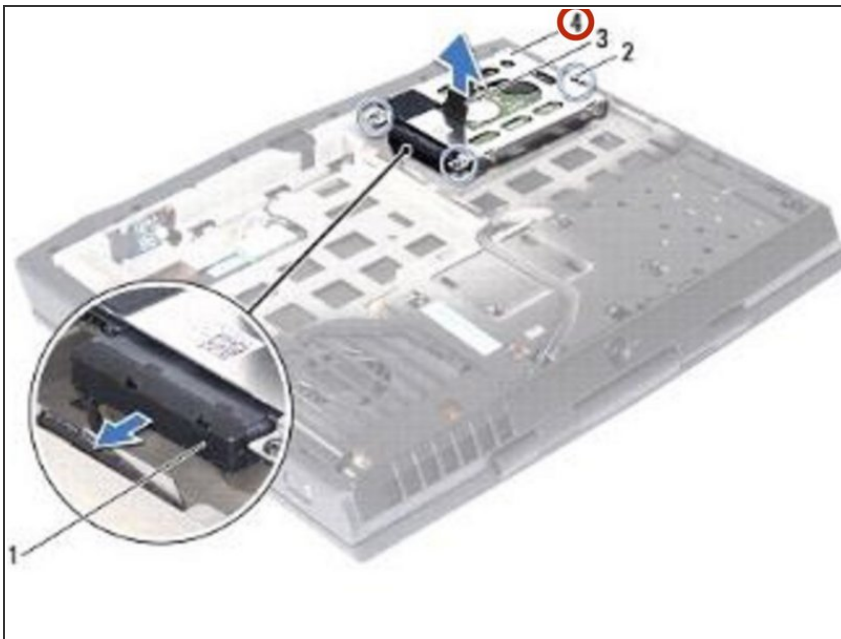
- ⚠ **WARNING:** Before working inside your computer, read the safety information that shipped with your computer.
- ⚠ **CAUTION:** Hard drives are extremely fragile. Exercise care when handling the hard drive.
- Loosen the three captive screws that secure the hard-drive assembly to the computer base.

Step 7 — Disconnecting the Hard-Drive Interposer



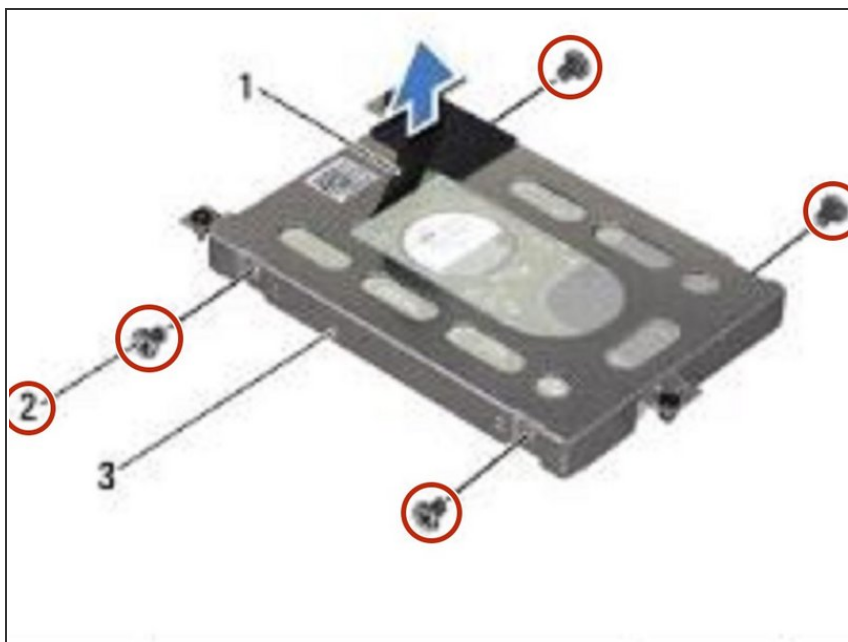
- Using the pull-tab, gently lift the hard-drive assembly and then disconnect the hard-drive interposer.

Step 8 — Lifting the Hard-Drive Assembly



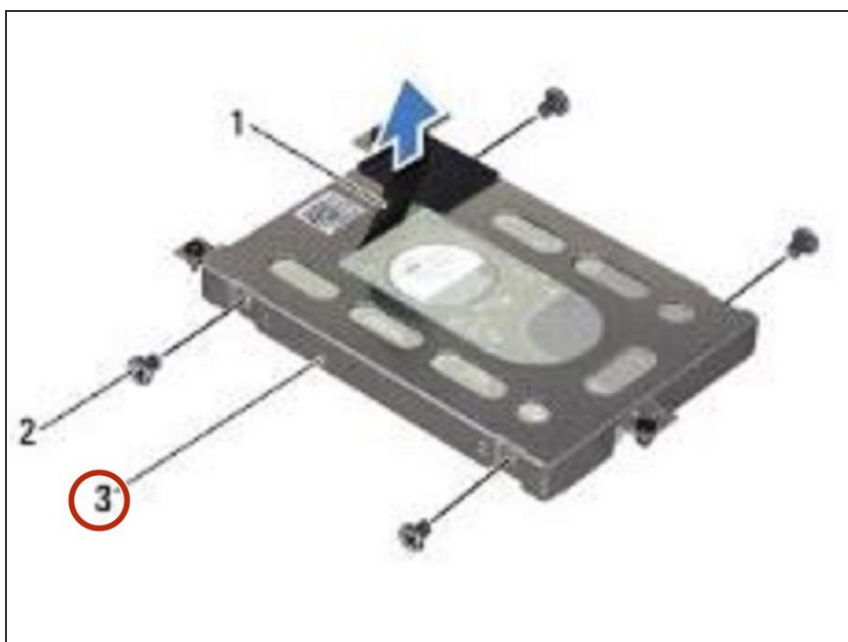
- Lift the hard-drive assembly off the computer base.

Step 9 — Remove the Four Screws



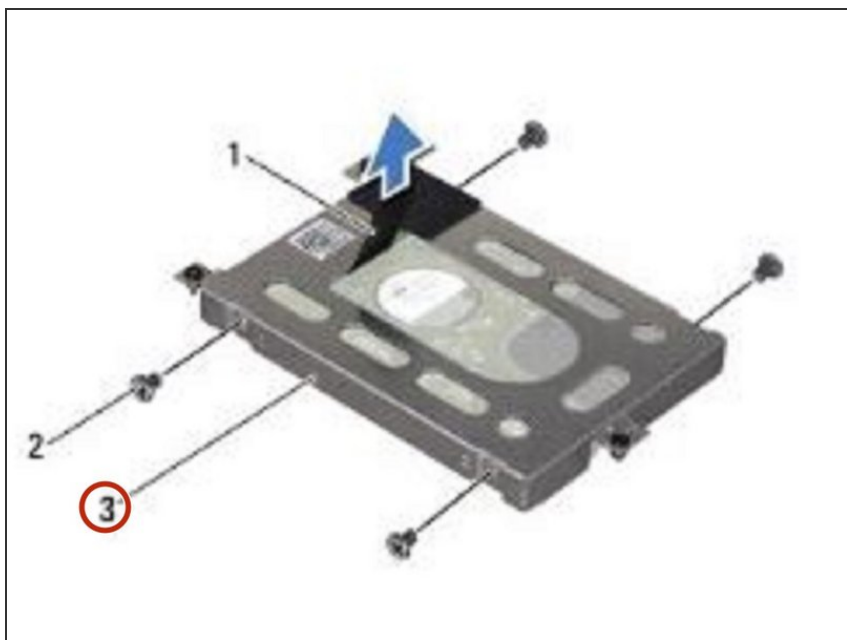
- Remove the four screws that secure the hard-drive bracket to the hard drive.

Step 10 — Lifting the Hard-Drive Bracket



- Lift the hard-drive bracket away from the hard drive.

Step 11 — Placing the New Hard-Drive



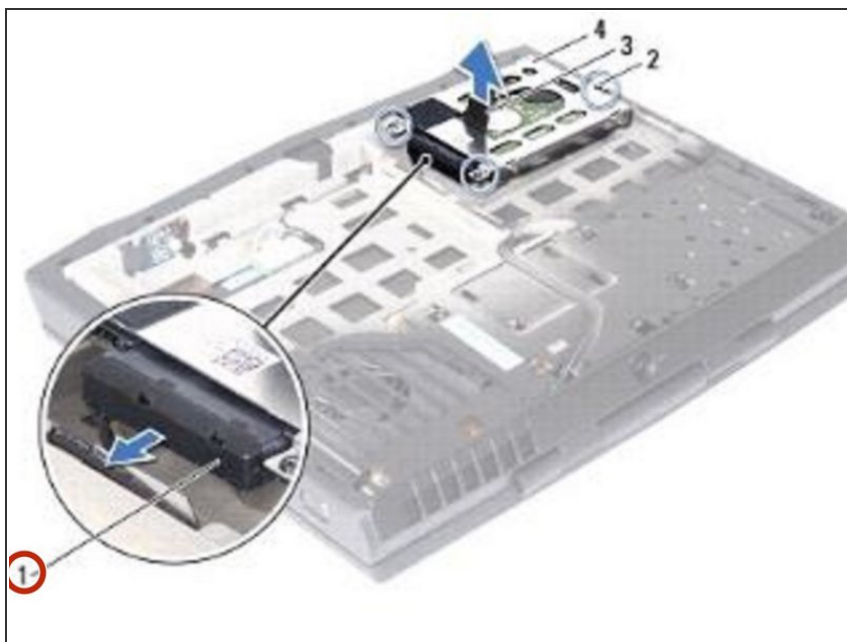
- Place the **NEW** hard drive in the hard-drive bracket.

Step 12 — Replace the Four Screws



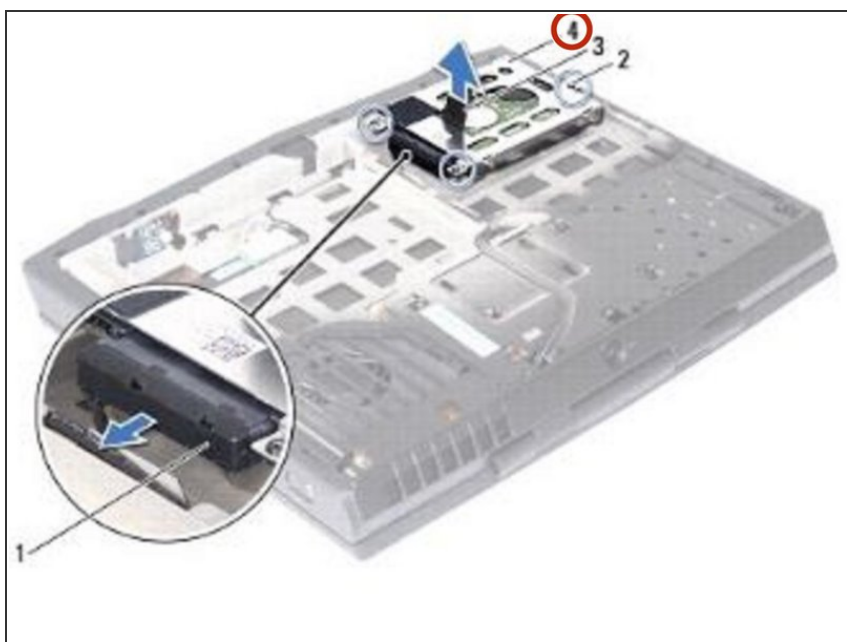
- Replace the four screws that secure the hard-drive bracket to the hard drive.

Step 13 — Connect the Interposer



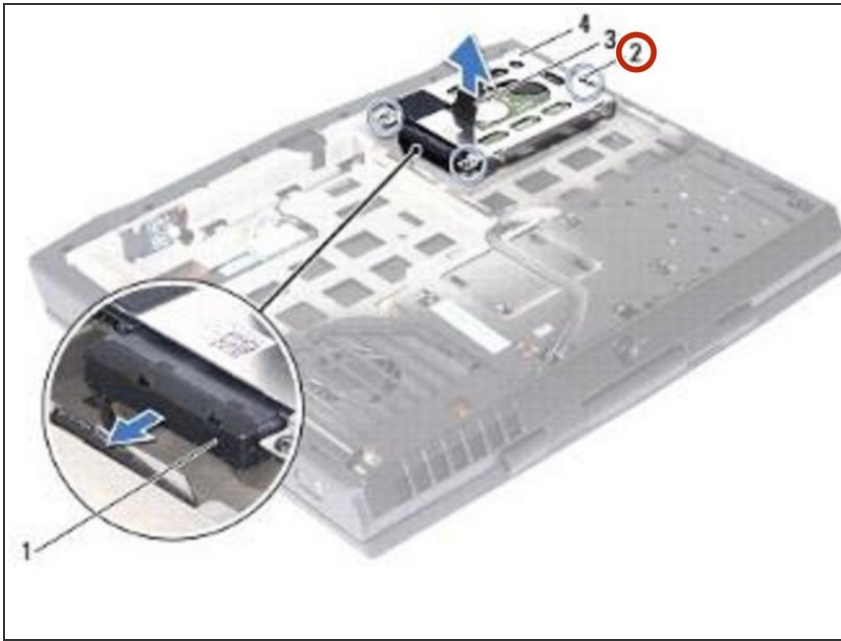
- Connect the interposer to the hard drive.

Step 14 — Placing the Hard-Drive Assembly



- Place the hard-drive assembly in the computer base.

Step 15 — Tighten the Captive Screws



- Tighten the three captive screws that secure the hard-drive assembly to the computer base.

To reassemble your device, follow these instructions in reverse order.