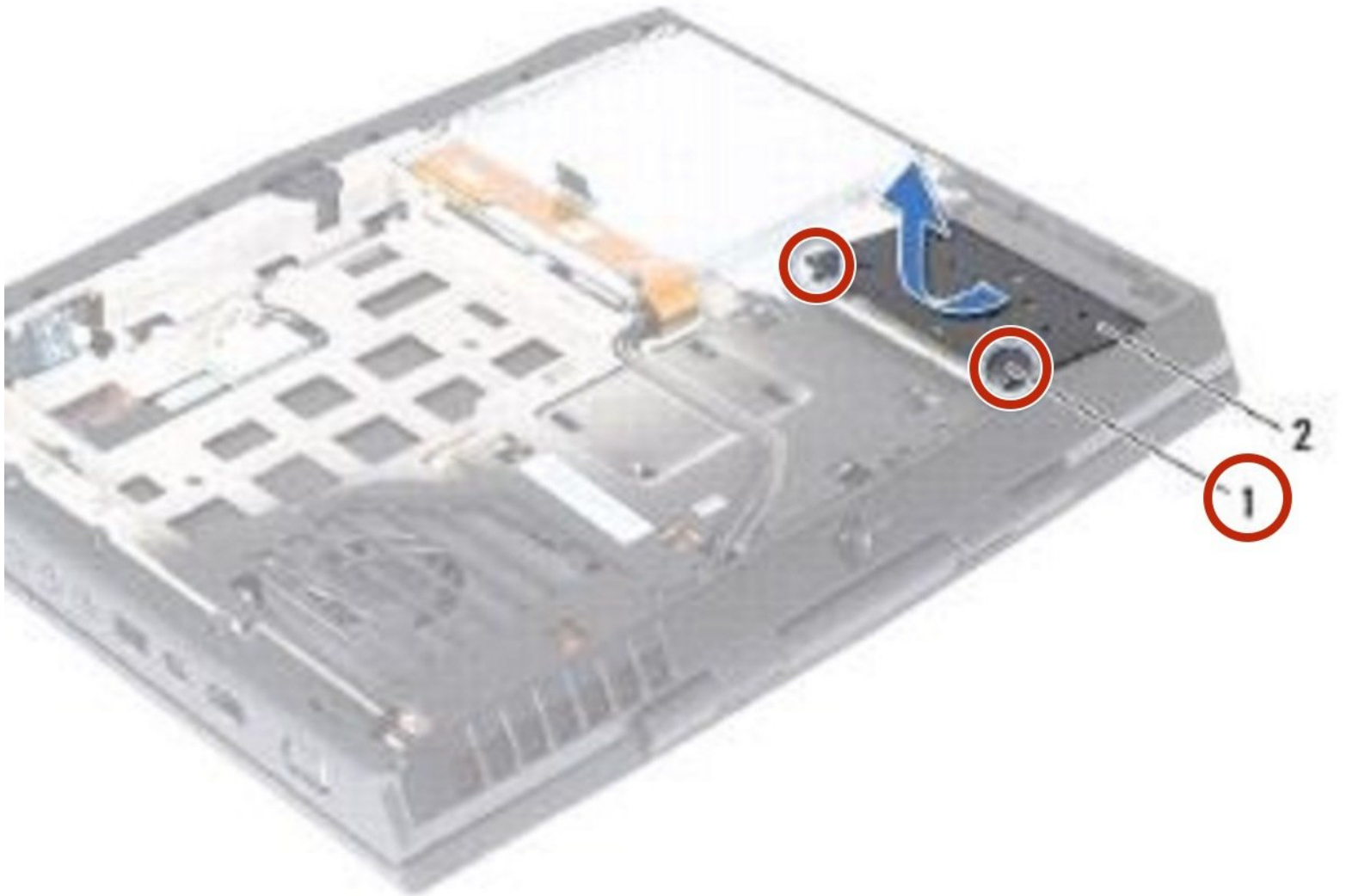




# Dell Alienware M14x Memory Module Replacement

How to replace the RAM in a Dell Alienware M14x.

Written By: Terrence15



---

## INTRODUCTION

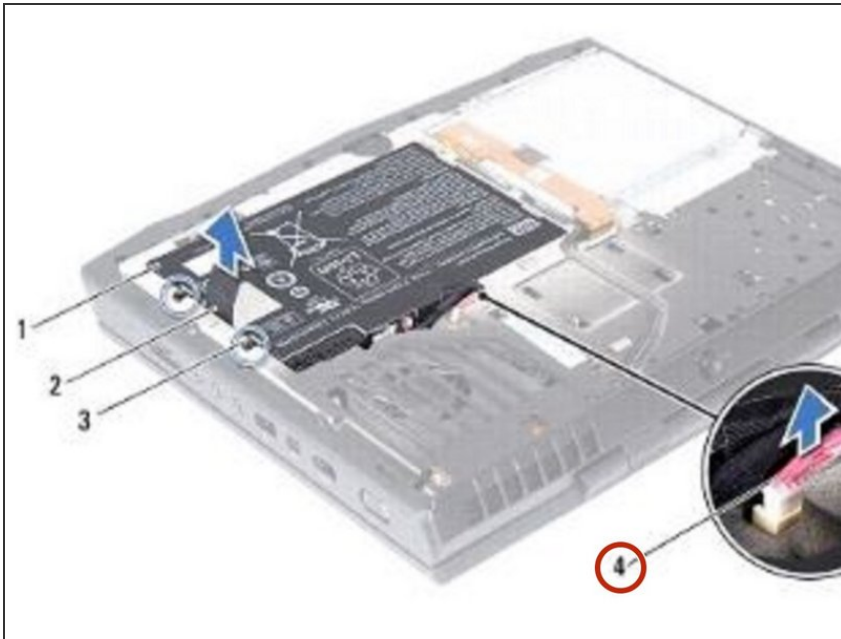
In this guide, we will show you how to remove and replace the Memory Module.





### TOOLS:

- [Essential Electronics Toolkit](#) (1)
-

## Step 1 — Disconnecting the Battery-Pack Cable

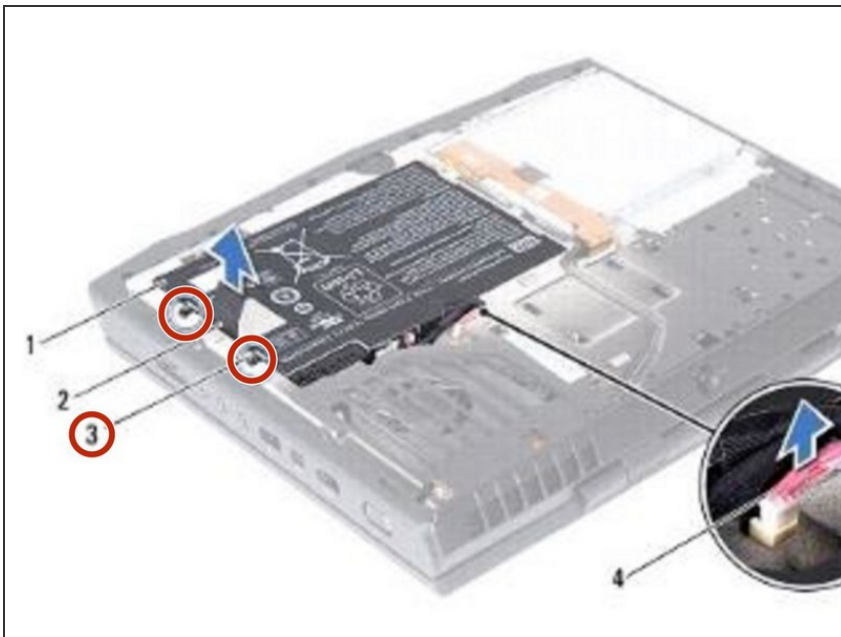


 **WARNING:** Before working inside your computer, read the safety information that shipped with your computer.

 **CAUTION:** To avoid electrostatic discharge, ground yourself by using a wrist grounding strap or by periodically touching an unpainted metal surface (such as a connector on your computer).

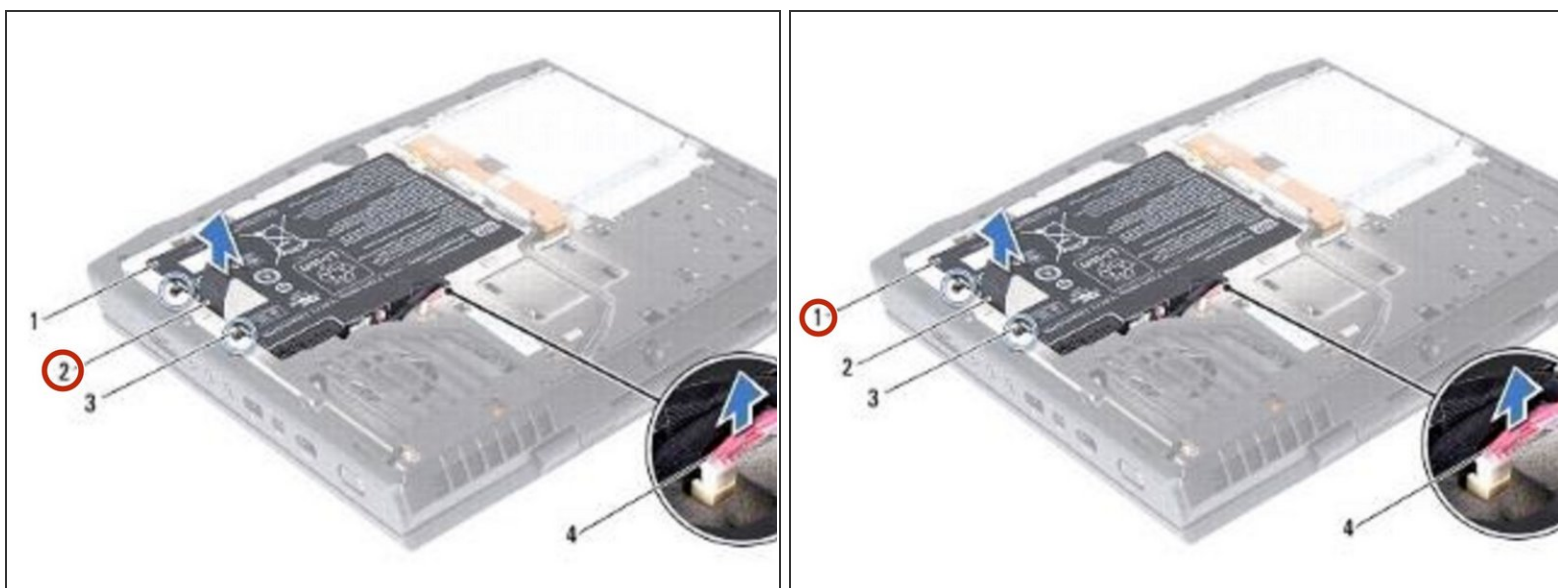
- Disconnect the battery-pack cable from the connector on the system board.

## Step 2 — Loosen the Two Captive Screws



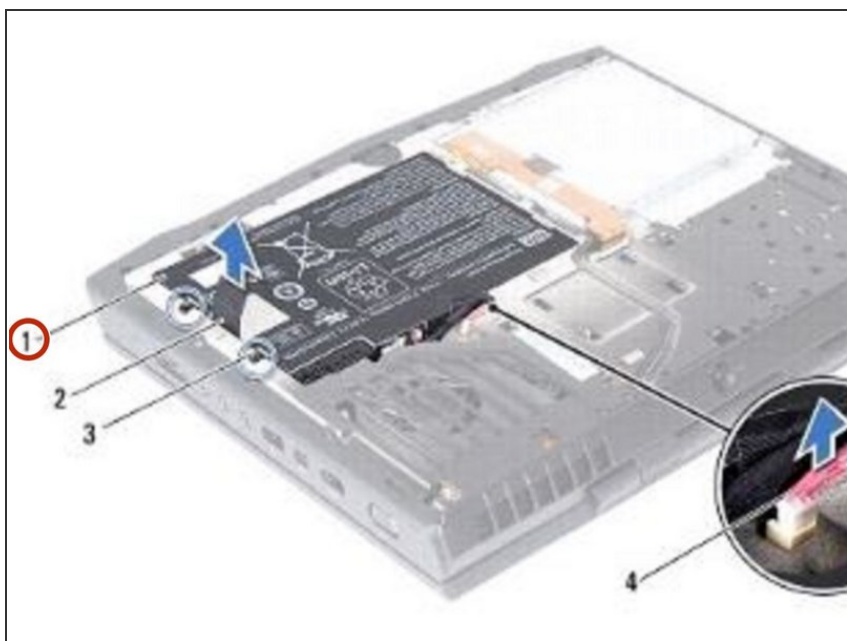
- Loosen the two captive screws that secure the battery pack to the computer base.

### Step 3 — Lifting the Battery Pack



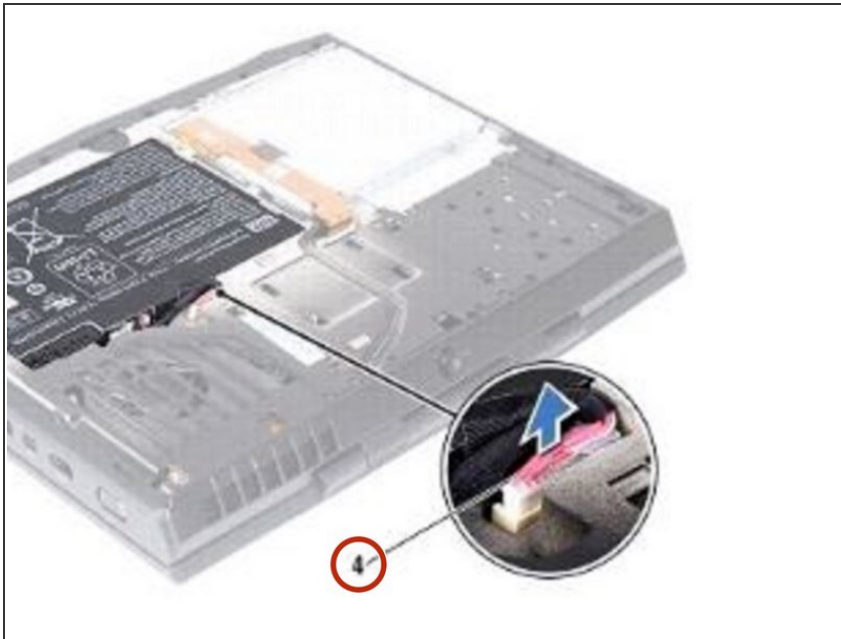
- Using the pull-tab, lift the battery pack off the computer base.

### Step 4 — Securing the Battery Pack



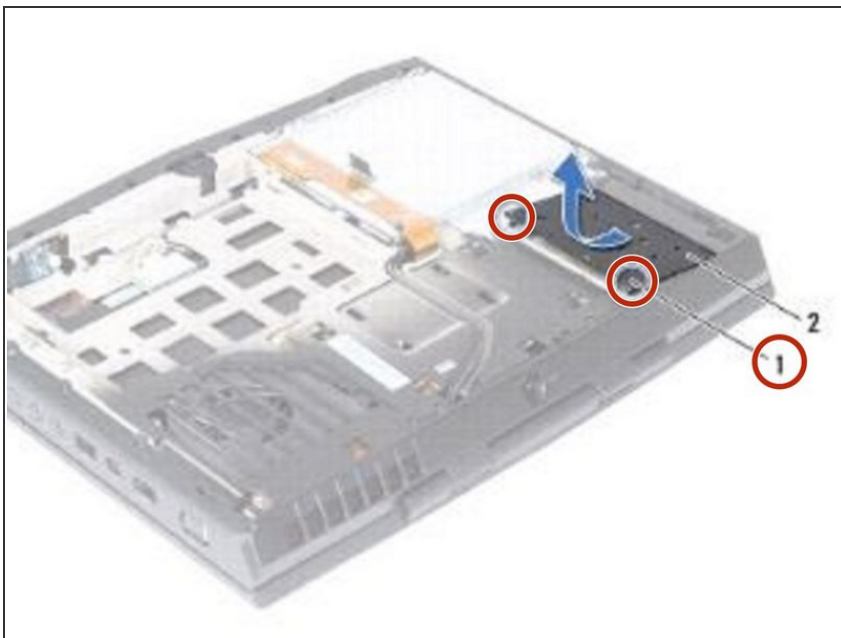
- Place the **NEW** battery pack in the battery bay and tighten the two captive screws that secure the battery pack to the computer base.

## Step 5 — Connecting the Battery-Pack Cable



- Connect the battery-pack cable to the connector on the system board.

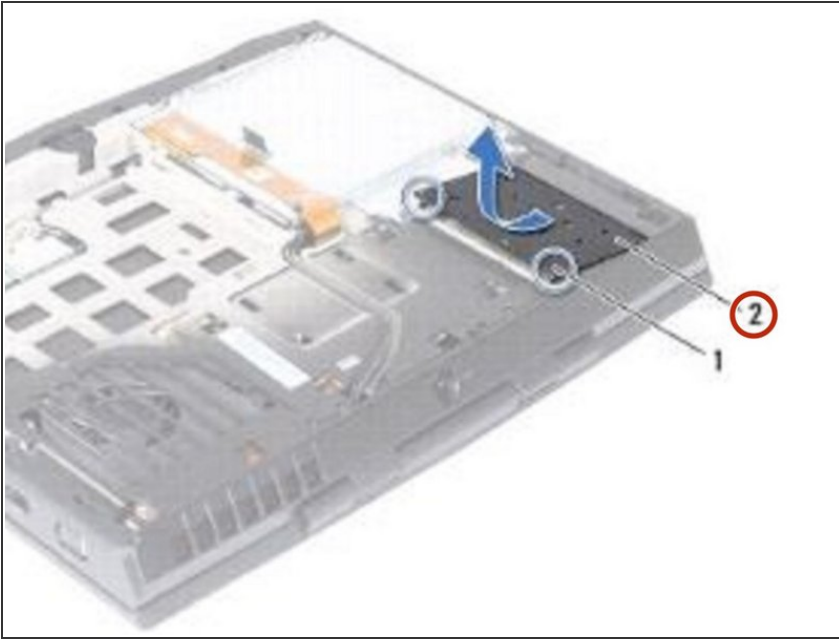
## Step 6 — Loosen the Screws



- ⚠ **WARNING:** Before working inside your computer, read the safety information that shipped with your computer.
- Loosen the two captive screws that secure the memory-module cover to the computer base.

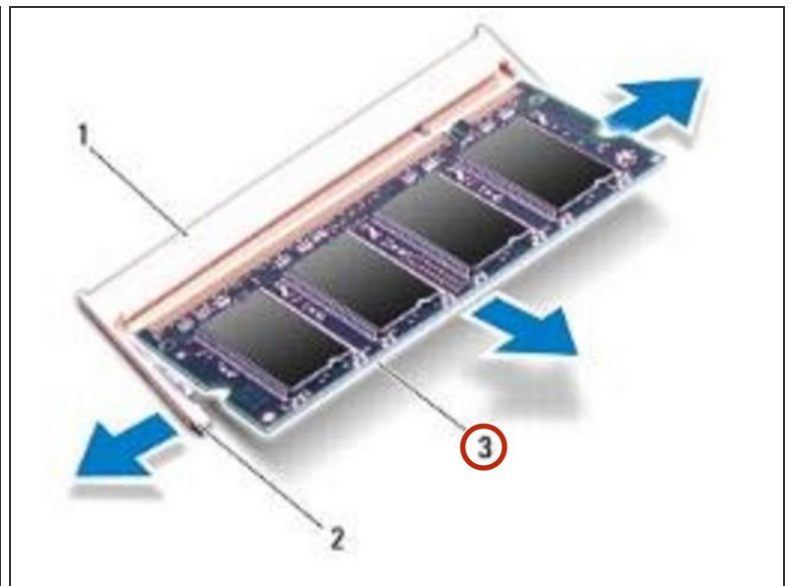
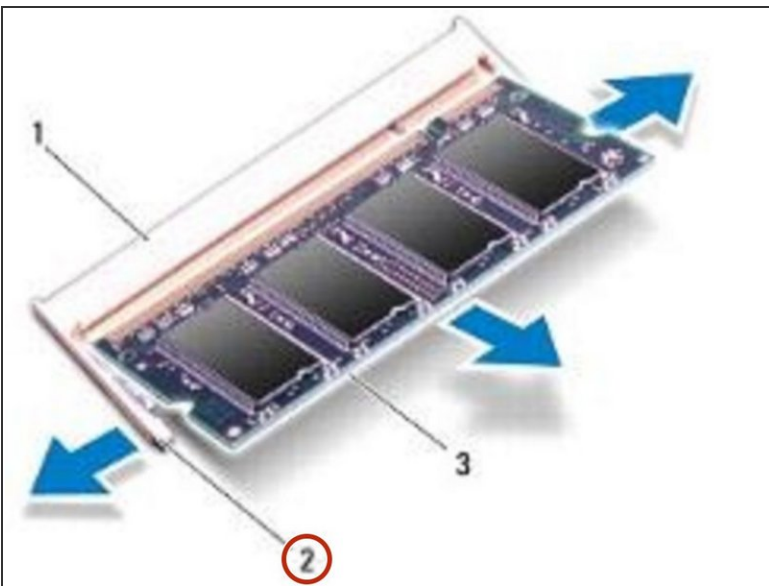


## Step 7 — Slide the Tabs



- Slide the tabs on the memory-module cover out of the slots on the computer base.

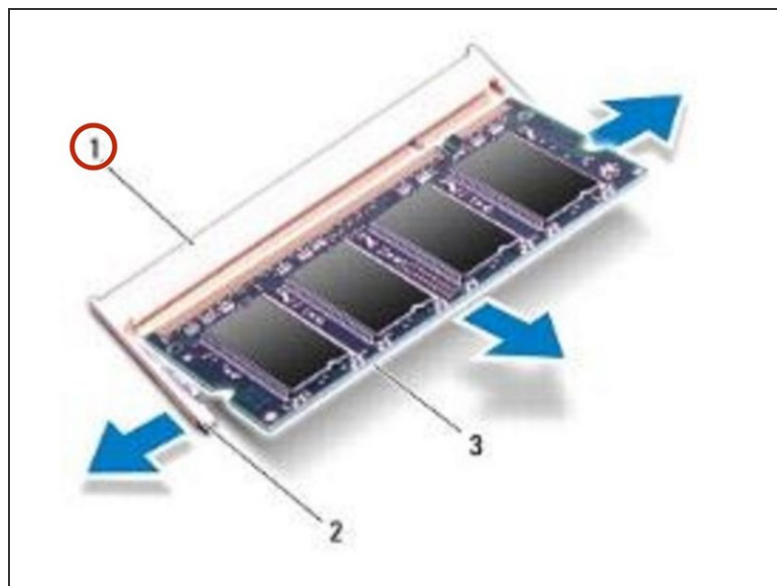
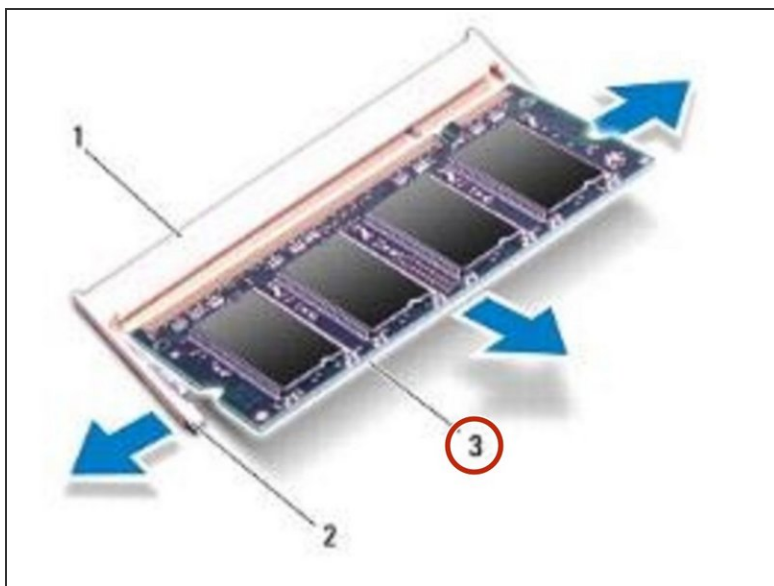
## Step 8 — Popping up the Memory Module



**CAUTION:** To prevent damage to the memory-module connector, do not use tools to spread the memory module securing clips.

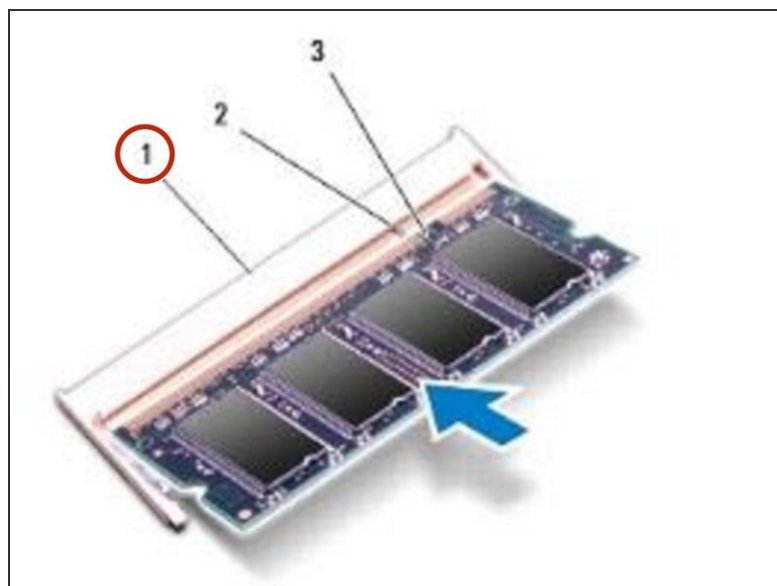
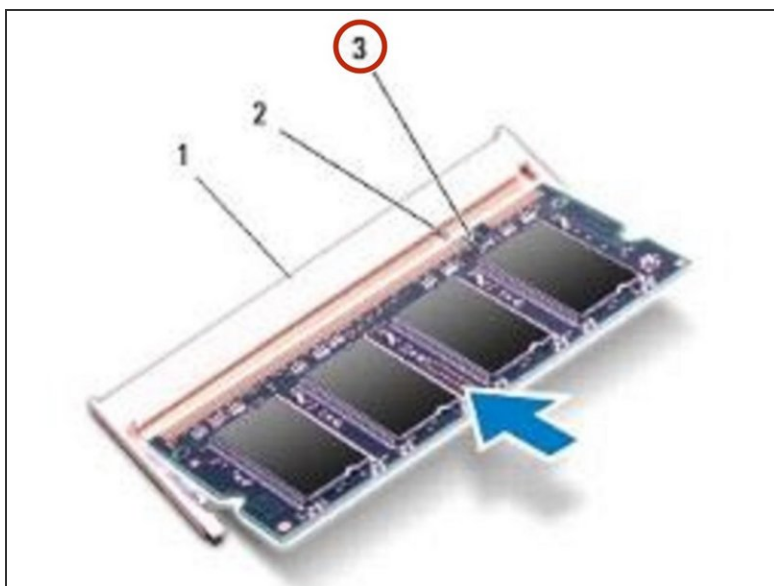
- Use your fingertips to carefully spread apart the securing clips on each end of the memory-module connector until the memory module pops up.

## Step 9 — Remove the Memory Module



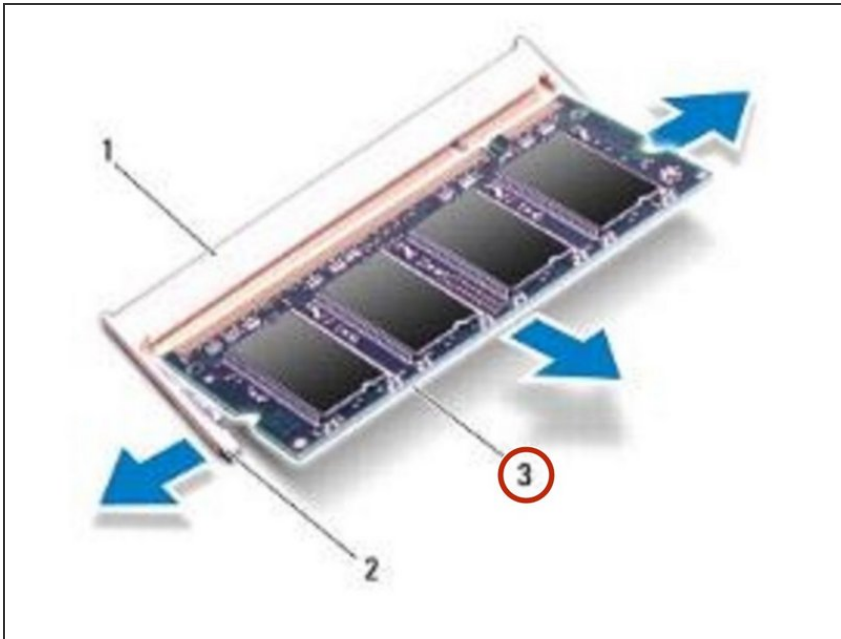
- Remove the memory module from the memory-module connector.

## Step 10 — Align the Notch



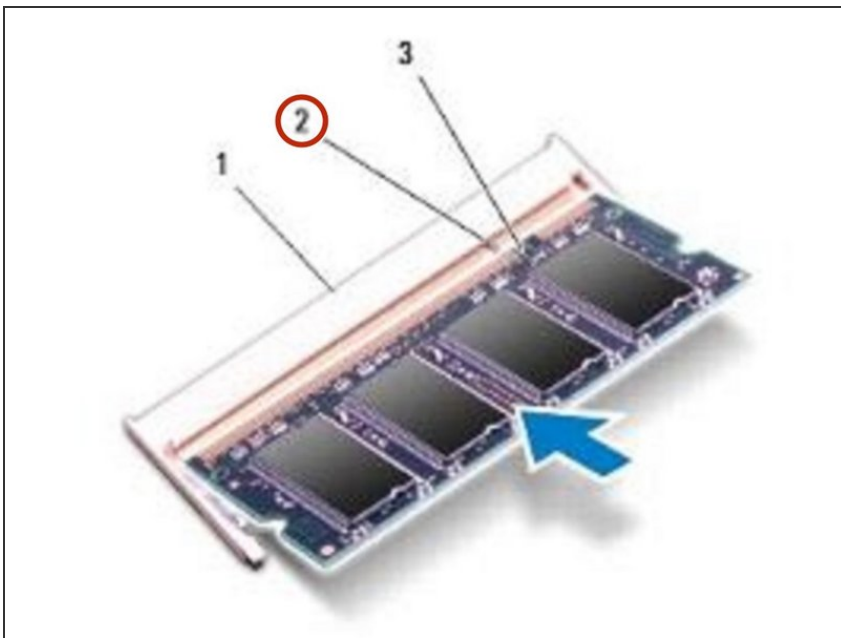
- Align the notch in the **NEW** memory module with the tab in the memory- module connector.

## Step 11 — Sliding the Memory Module



- Slide the memory module firmly into the connector at a 45-degree angle, and press the memory module down until it clicks into place. If you do not hear the click, remove the memory module and reinstall it.

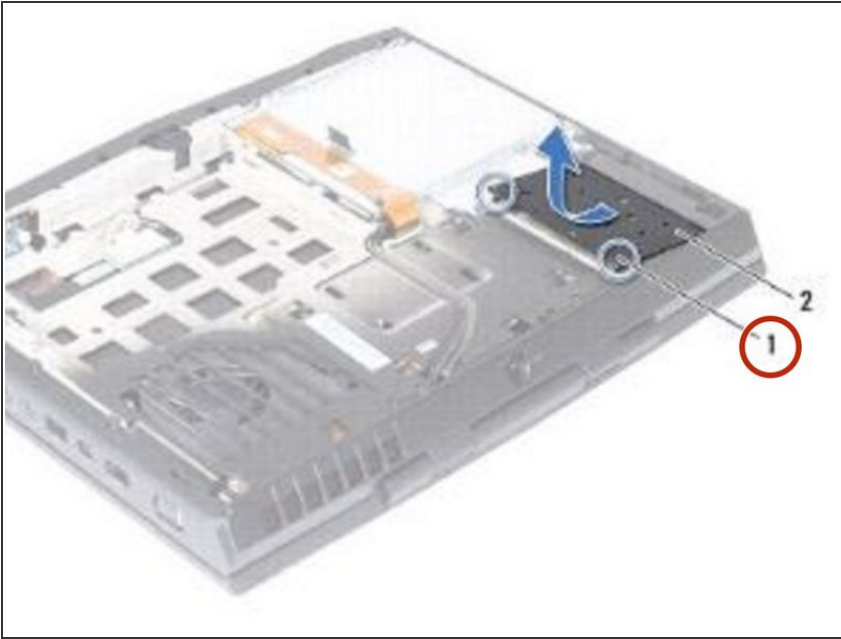
## Step 12 — Slide the Tabs



- Slide the tabs on the memory-module cover into the slots on the computer base and lower the memory-module cover into place.



## Step 13 — Tighten the Two Captive Screws



- Tighten the two captive screws that secure the memory-module cover to the computer base.

To reassemble your device, follow these instructions in reverse order.