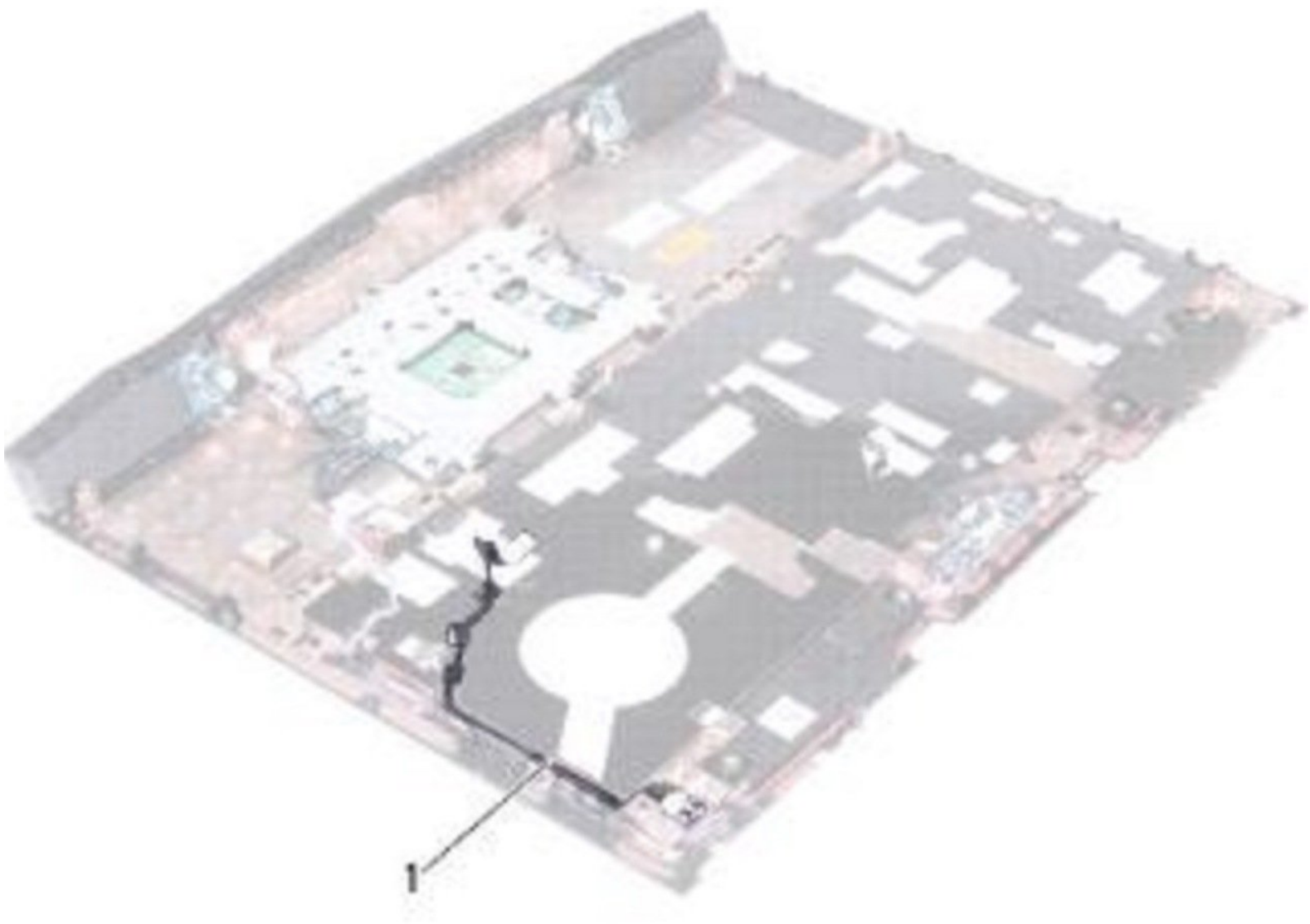




# Dell Alienware M14x Status-Light Board Replacement

How to replace the LED PCB in a Dell Alienware M14x.

Written By: Terrence15



---

## INTRODUCTION

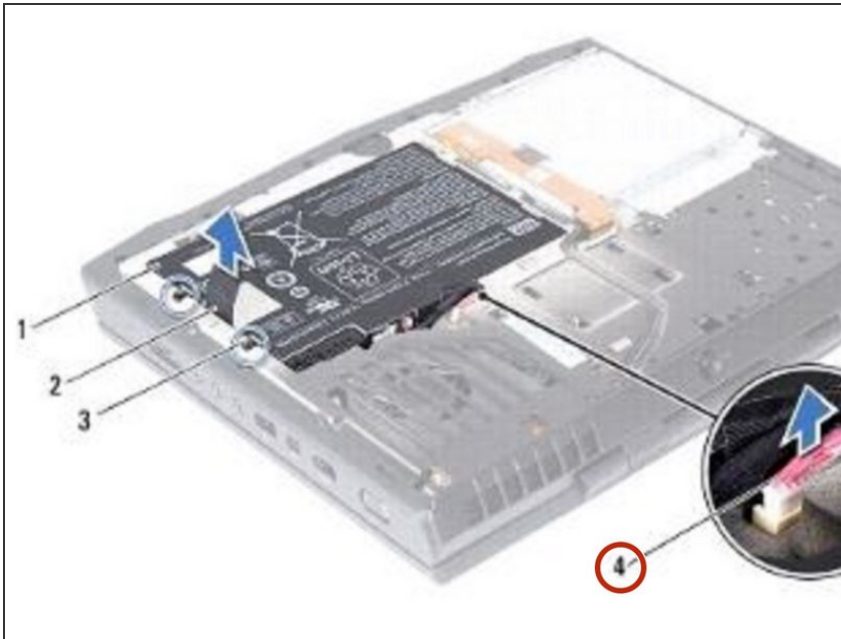
In this guide, we will show you how to remove and replace the Status-Light Board.





### TOOLS:

- [Essential Electronics Toolkit](#) (1)
-

## Step 1 — Disconnecting the Battery-Pack Cable

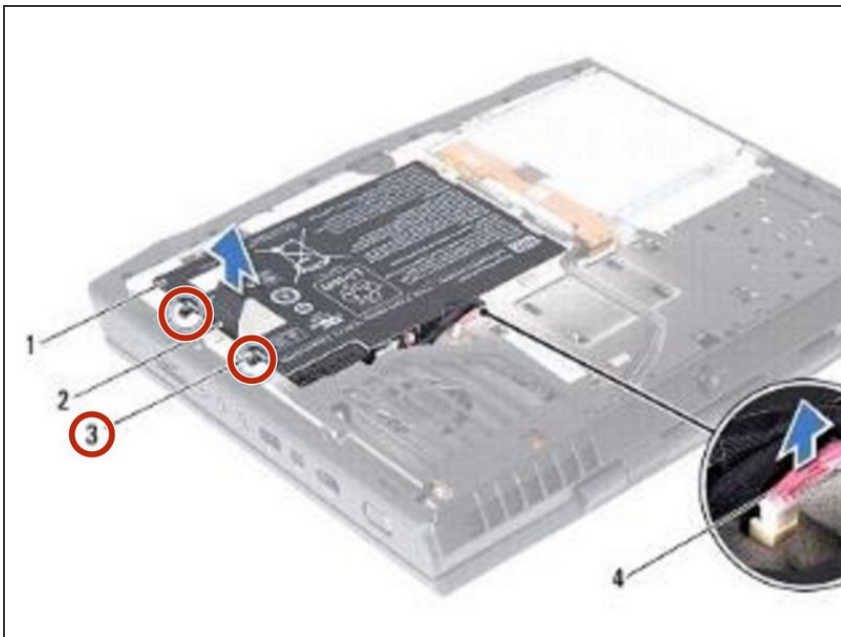


 **WARNING:** Before working inside your computer, read the safety information that shipped with your computer.

 **CAUTION:** To avoid electrostatic discharge, ground yourself by using a wrist grounding strap or by periodically touching an unpainted metal surface (such as a connector on your computer).

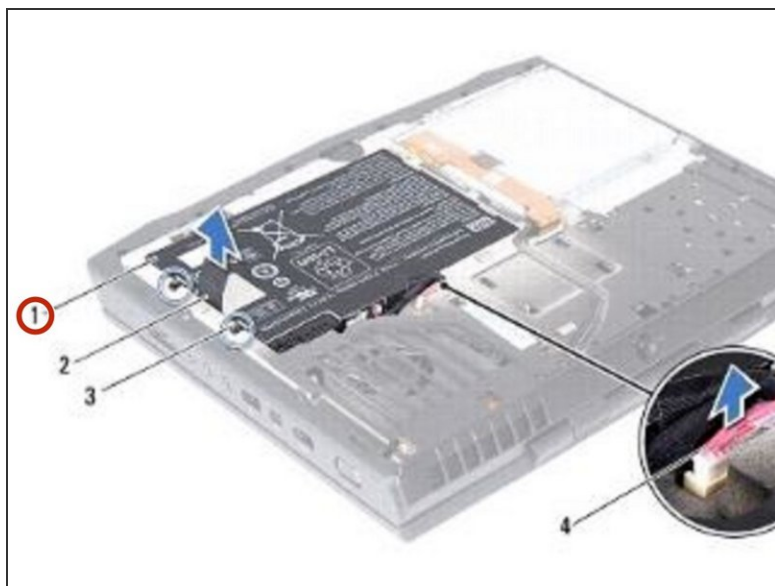
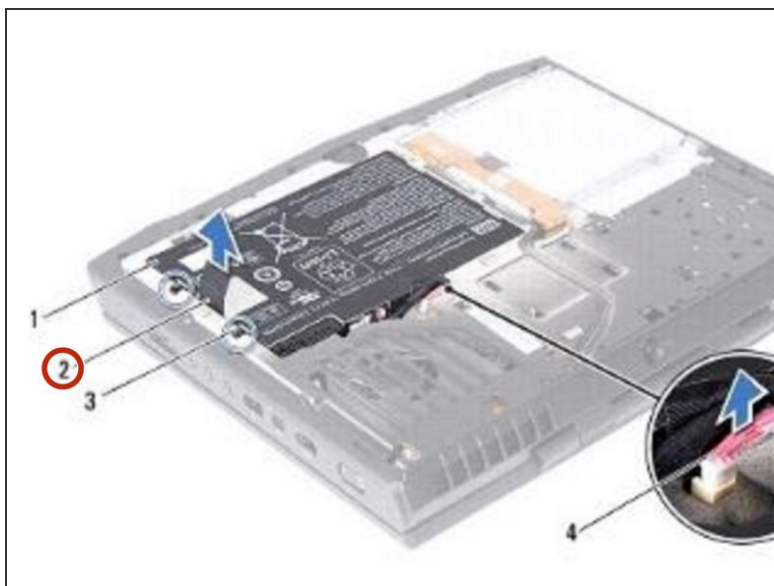
- Disconnect the battery-pack cable from the connector on the system board.

## Step 2 — Loosen the Two Captive Screws



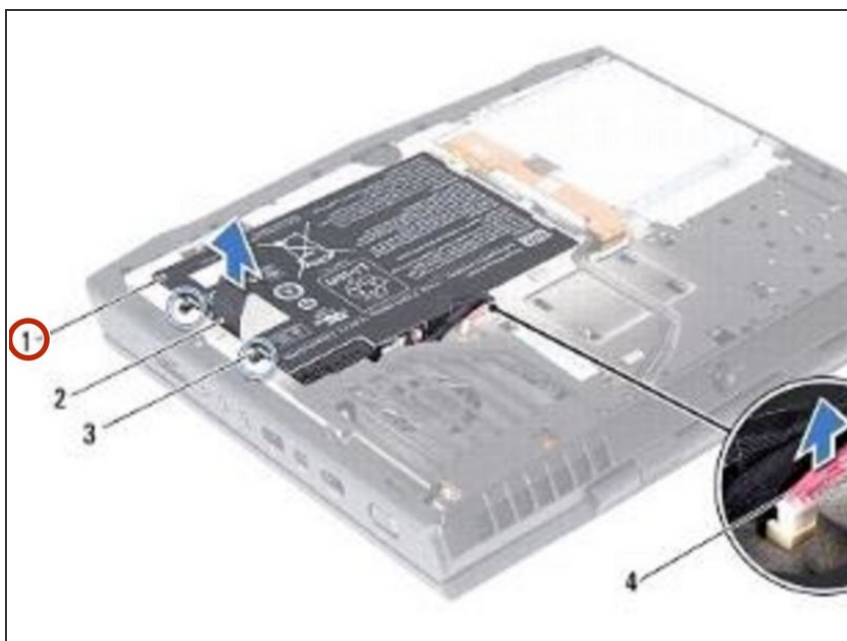
- Loosen the two captive screws that secure the battery pack to the computer base.

### Step 3 — Lifting the Battery Pack



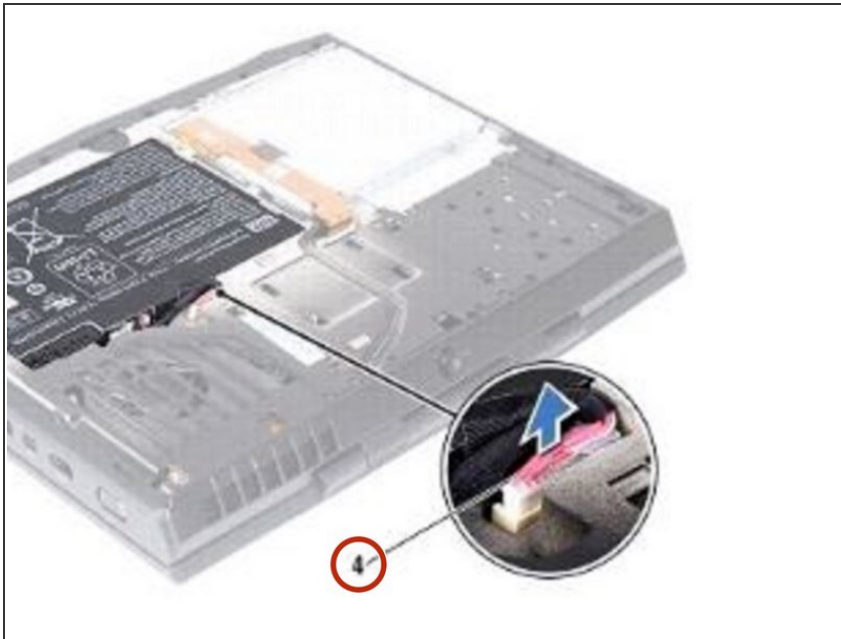
- Using the pull-tab, lift the battery pack off the computer base.

### Step 4 — Securing the Battery Pack



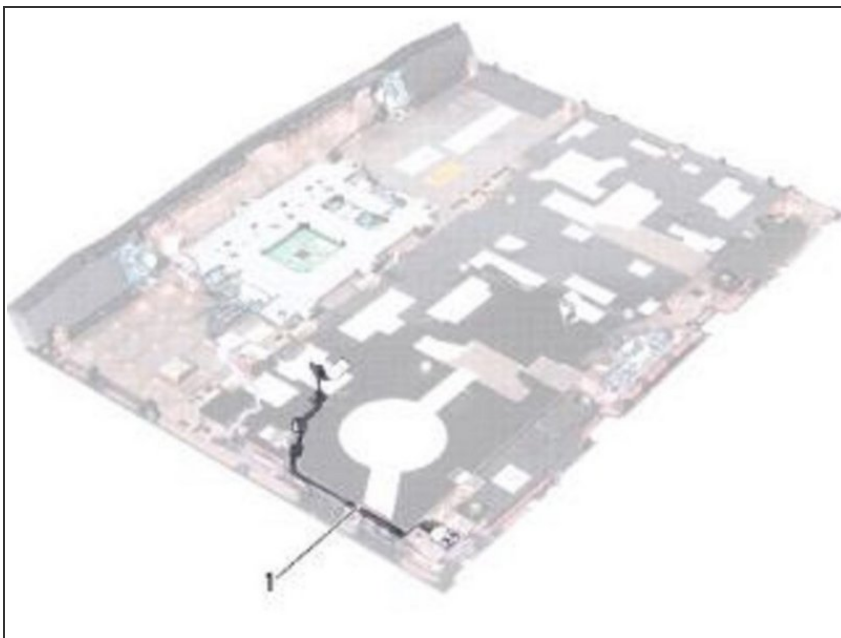
- Place the **NEW** battery pack in the battery bay and tighten the two captive screws that secure the battery pack to the computer base.

## Step 5 — Connecting the Battery-Pack Cable



- Connect the battery-pack cable to the connector on the system board.

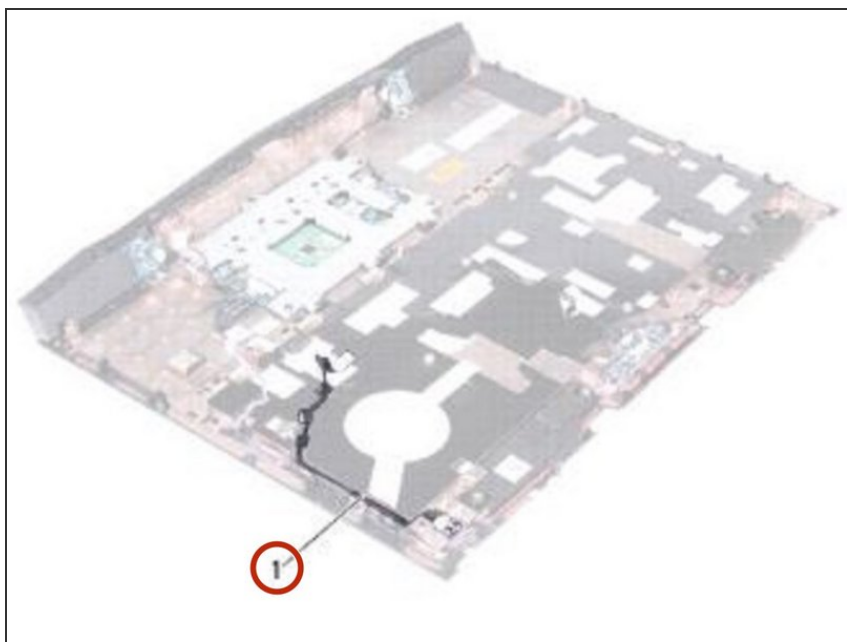
## Step 6 — Turn the Palm-Rest Assembly



- ⚠ **WARNING:** Before working inside your computer, read the safety information that shipped with your computer.
- ⚠ **CAUTION:** To avoid electrostatic discharge, ground yourself by using a wrist grounding strap or by periodically touching an unpainted metal surface (such as a connector on your computer).
- Turn the palm-rest assembly over.

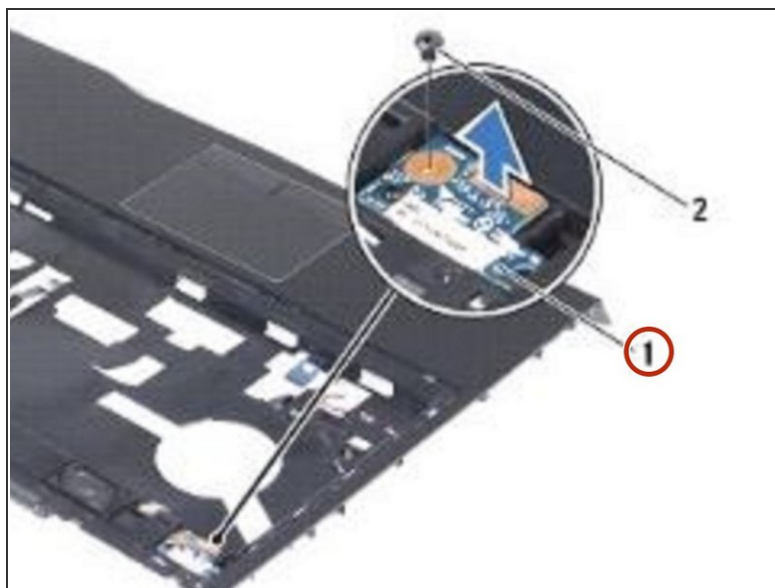
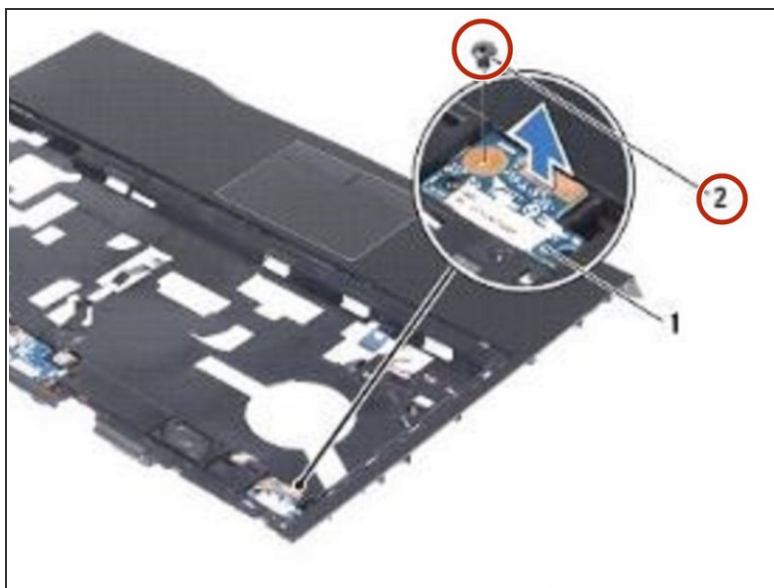


## Step 7 — Removing the Cable



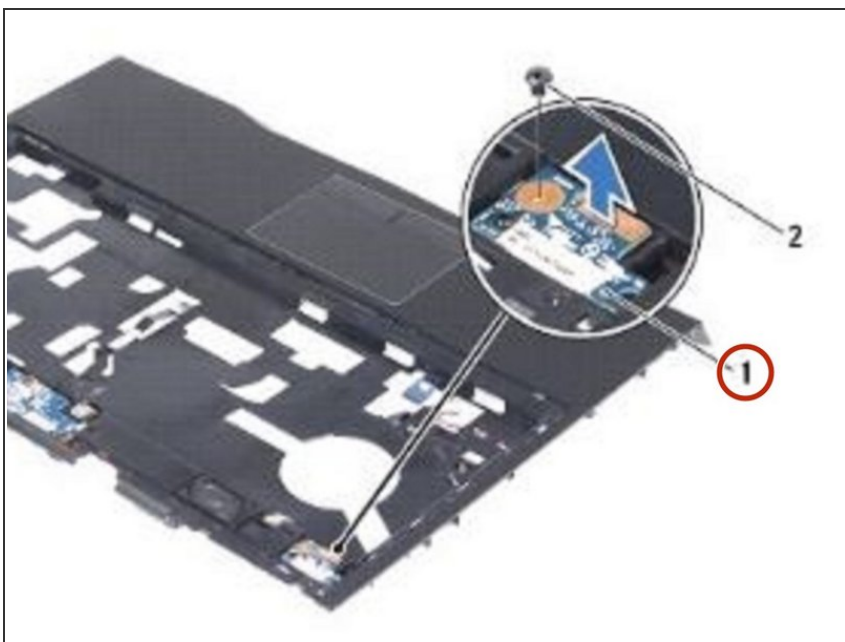
- Note the routing of status-light board cable and remove the cable from the routing guides.

## Step 8 — Remove the Screw



- Remove the screw that secures the status-light board to the palm-rest assembly.

## Step 9 — Lifting the Status-Light Board



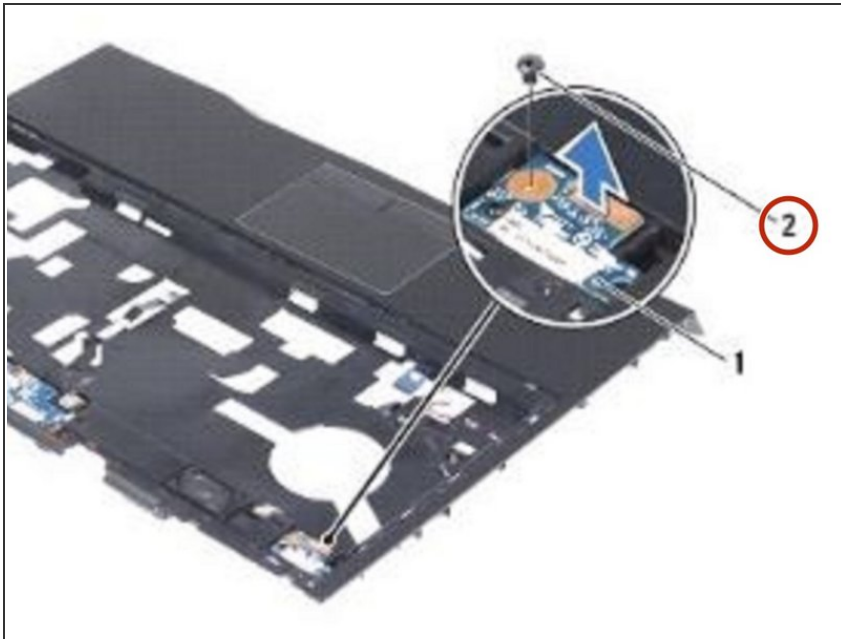
- Lift the status-light board along with its cable away from the palm-rest assembly.

## Step 10 — Align the Slot



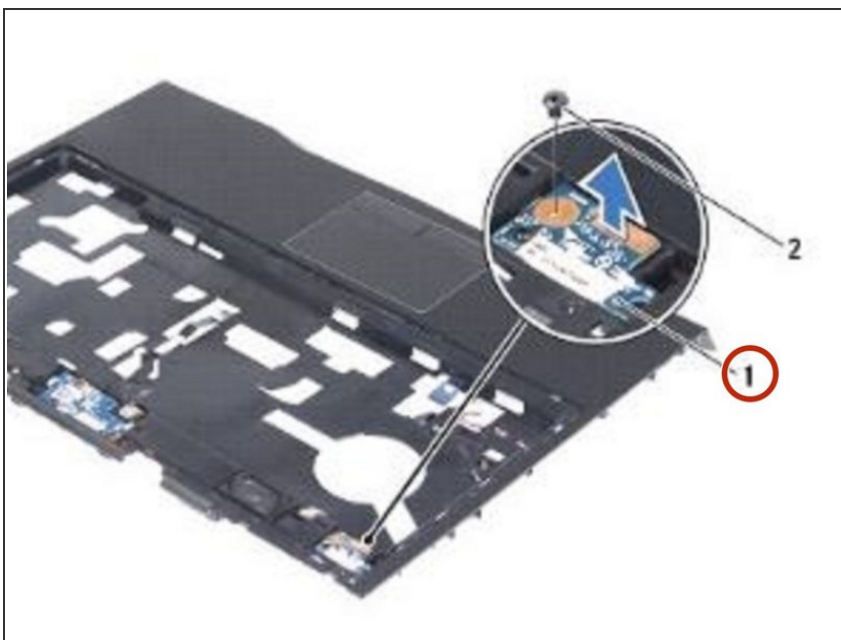
- Align the slot on the **NEW** status-light board with the alignment post on the palm rest assembly.

## Step 11 — Replace the Screw



- Replace the screw that secures the status-light board to the palm-rest assembly.

## Step 12 — Route the Status-Light Board Cable



- Route the status-light board cable through the routing guides on the palm- rest assembly.

To reassemble your device, follow these instructions in reverse order.