



Dell Alienware M17x Display Assembly Replacement

Written By: Terrence15



INTRODUCTION

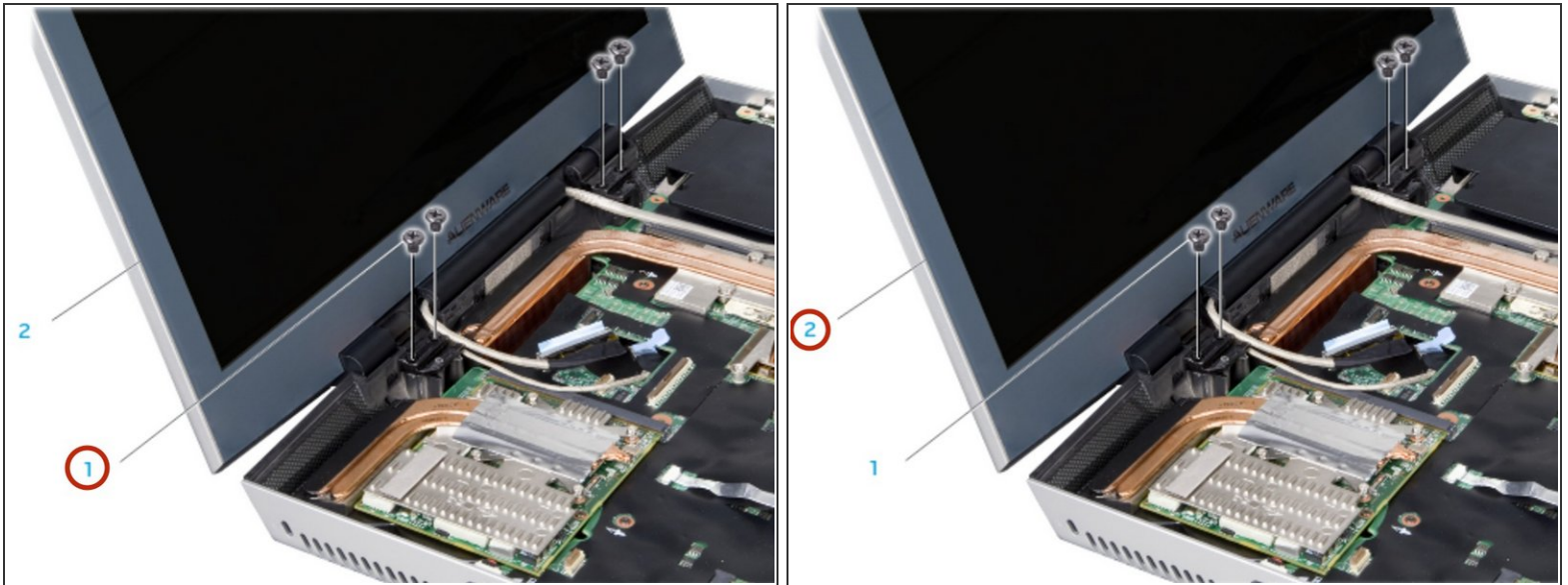
In this guide, we will be showing you how to remove and replace the Display Assembly.



TOOLS:

- [Phillips #0 Screwdriver](#) (1)
-

Step 1 — Remove the Screws

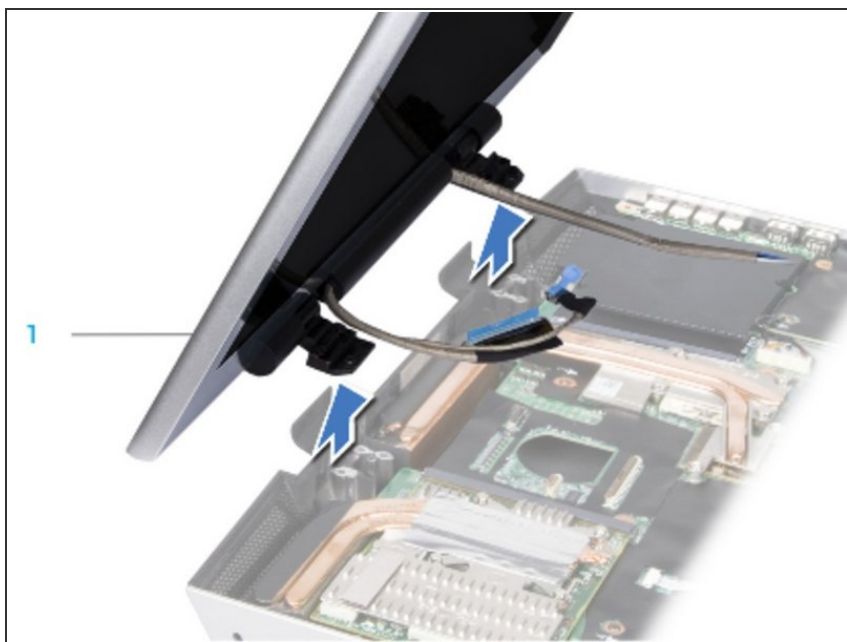


⚠ WARNING: Before working inside your computer, read the safety information that shipped with your computer.

⚠ CAUTION: To avoid damage to the display, you must not disassemble your Edge-to-Edge display assembly in the field.

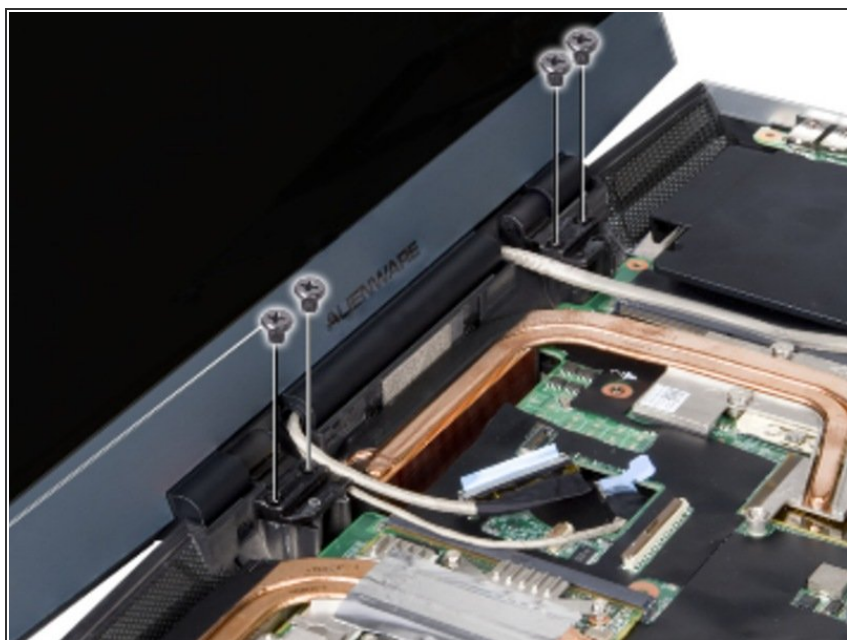
- Remove the four screws (two from each hinge) that secure the display assembly to the computer base.

Step 2 — Lifting the Display Assembly



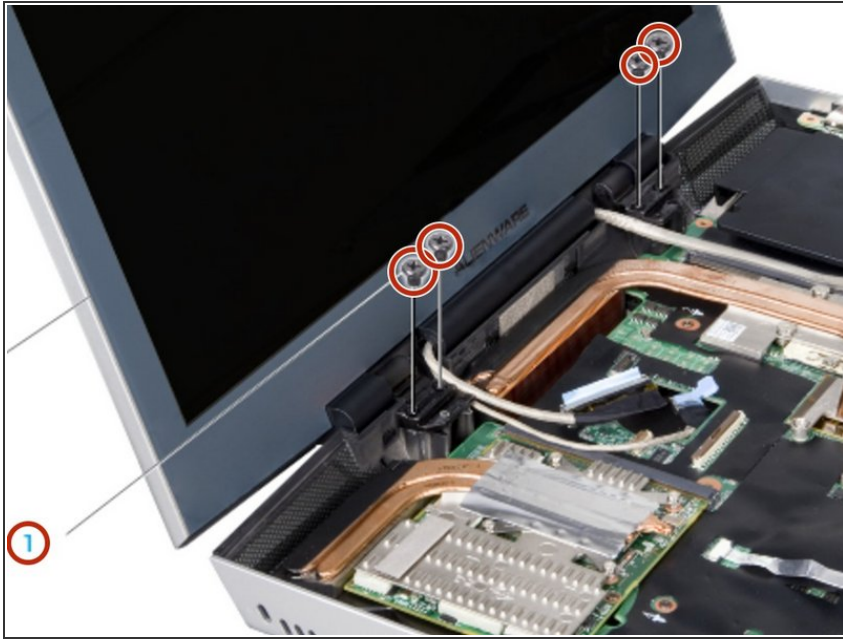
- Bend the display assembly towards the computer base at a 45-degree angle and lift the display assembly off the computer.

Step 3 — Align the Screw Holes



- Align the screw holes on the display hinges with the computer base.

Step 4 — Replace the Screws



- Replace the four screws (two on each hinge) that secure the display assembly to the computer base.

CAUTION: Before turning on the computer, replace all screws and ensure that no stray screws remain inside the computer. Failure to do so may result in damage to the computer.

To reassemble your device, follow these instructions in reverse order.