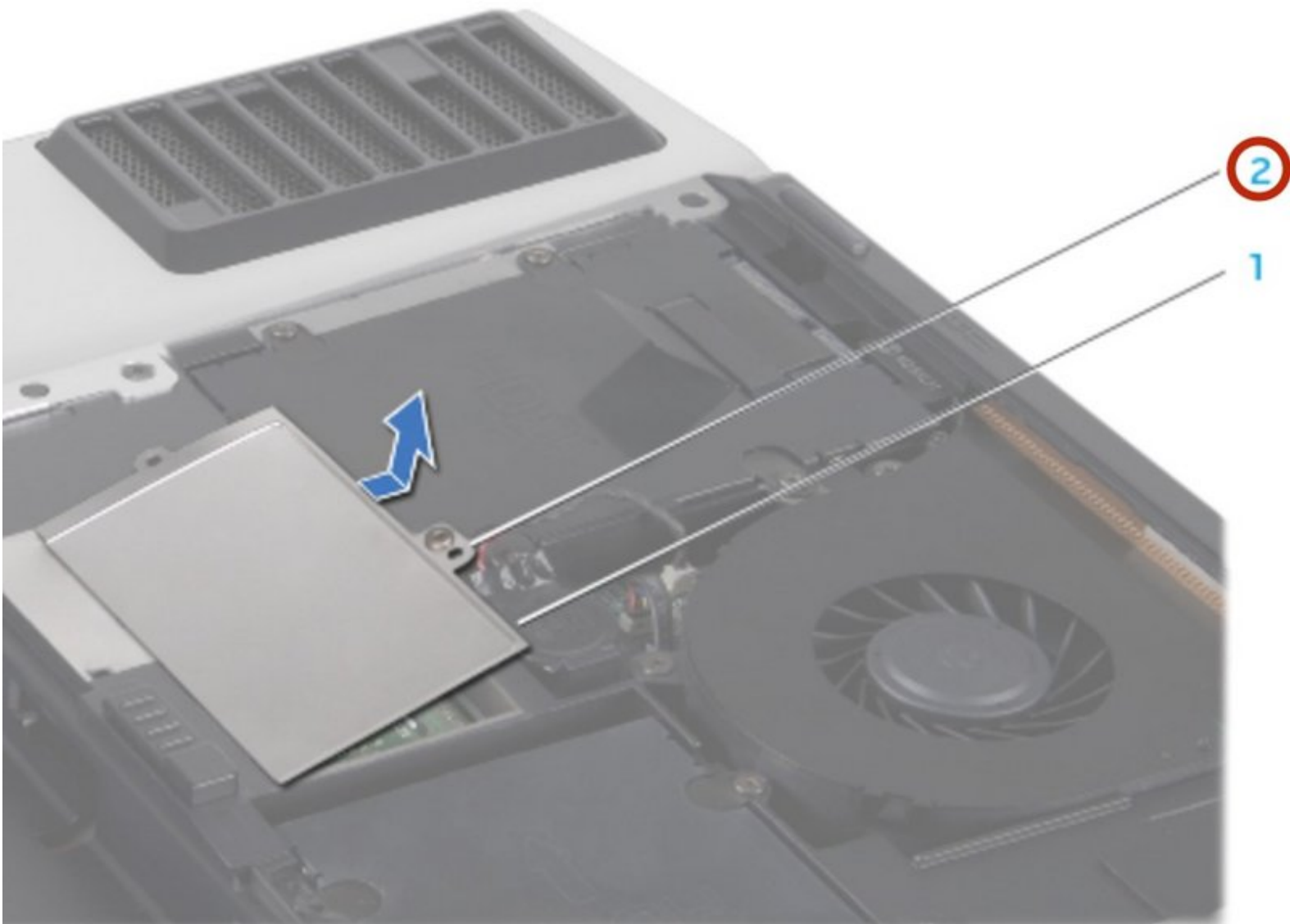




Dell Alienware M17x R2 Memory Modules Replacement

Written By: Terrence15



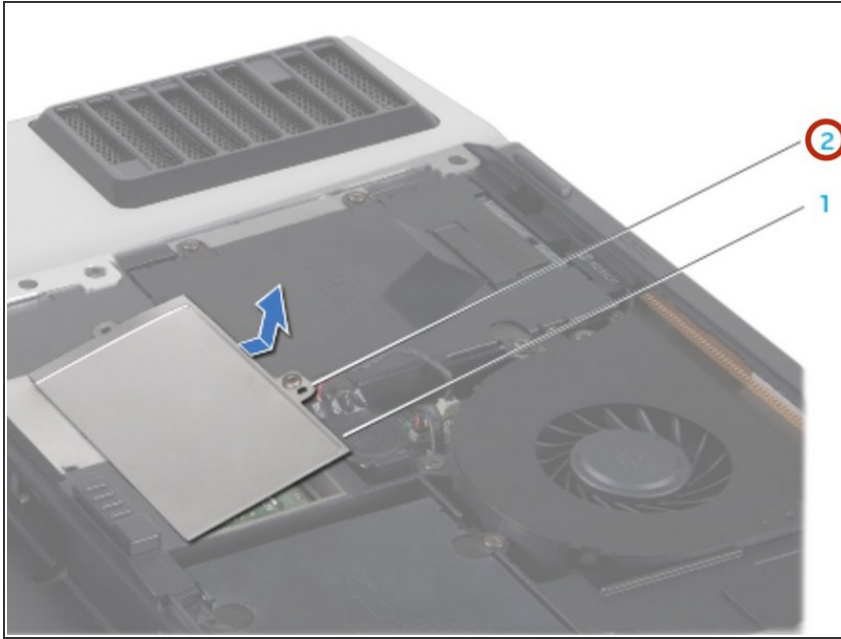
INTRODUCTION

In this guide, we will be showing you how to remove and replace the Memory Modules.

TOOLS:

- [Phillips #0 Screwdriver](#) (1)
-

Step 1 — Loosen the Screw

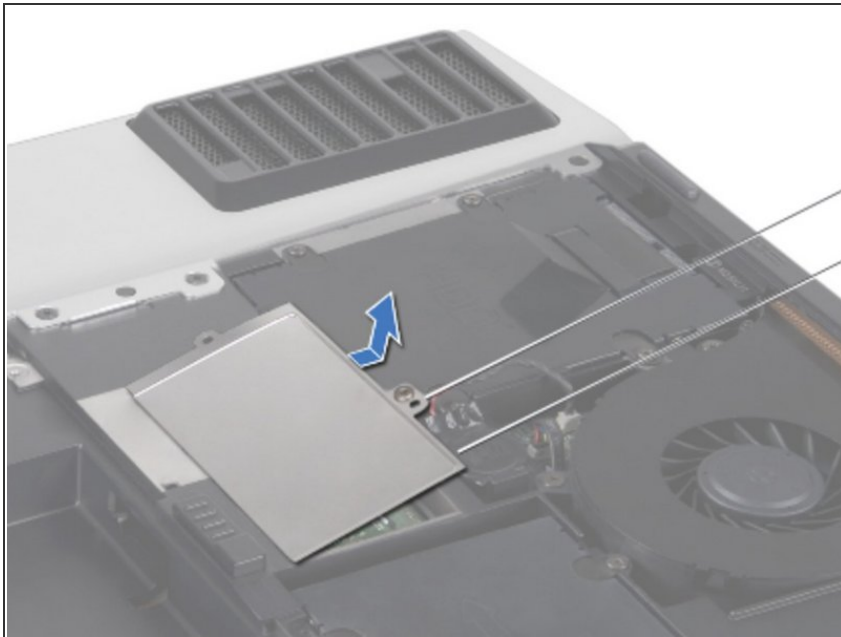


⚠ WARNING: Before working inside your computer, read the safety information that shipped with your computer.

⚠ CAUTION: To avoid electrostatic discharge, ground yourself by using a wrist grounding strap or by periodically touching an unpainted metal surface (such as a connector on the back of the computer).

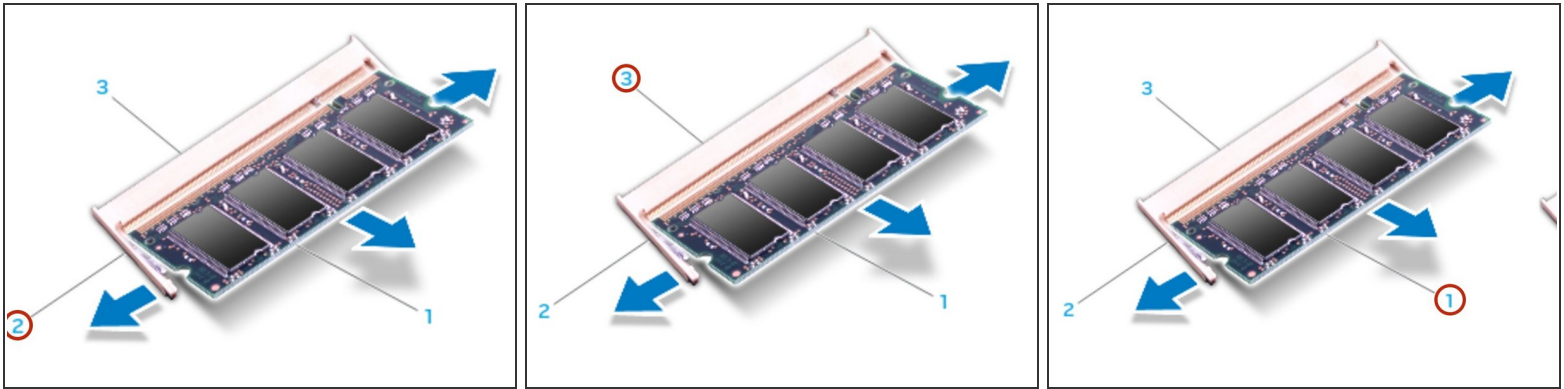
- Loosen the captive screw that secures the memory-module door to the computer base.

Step 2 — Sliding the Memory Module Door



- Slide the memory-module door to release the tabs and lift the memory-module door out of the computer base.

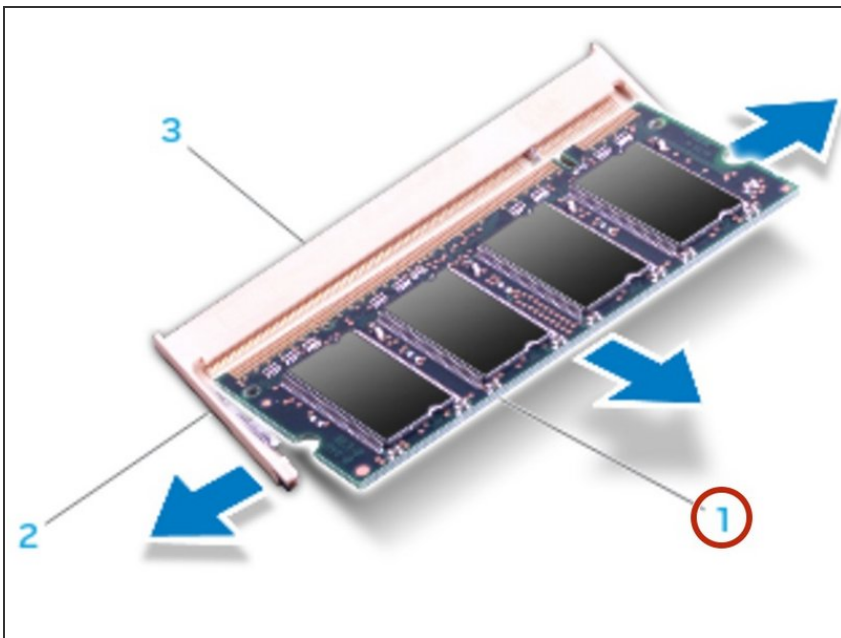
Step 3 — Popping up the Memory Module



CAUTION: If you need to remove memory modules from both connectors, remove the memory module in the upper connector before you remove the module in the lower connector.

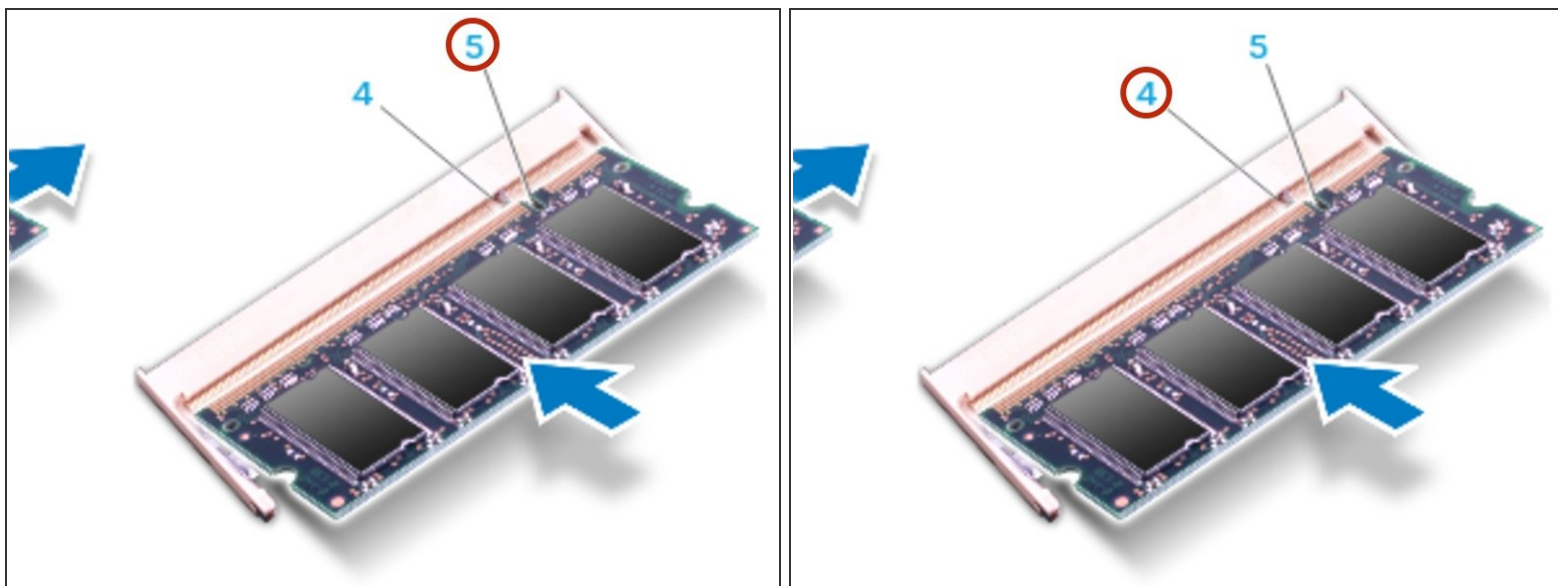
- Use your fingertips to carefully spread apart the spring-locks on the memory module connector until the module pops up.

Step 4 — Removing the Memory Module



- Remove the memory module.

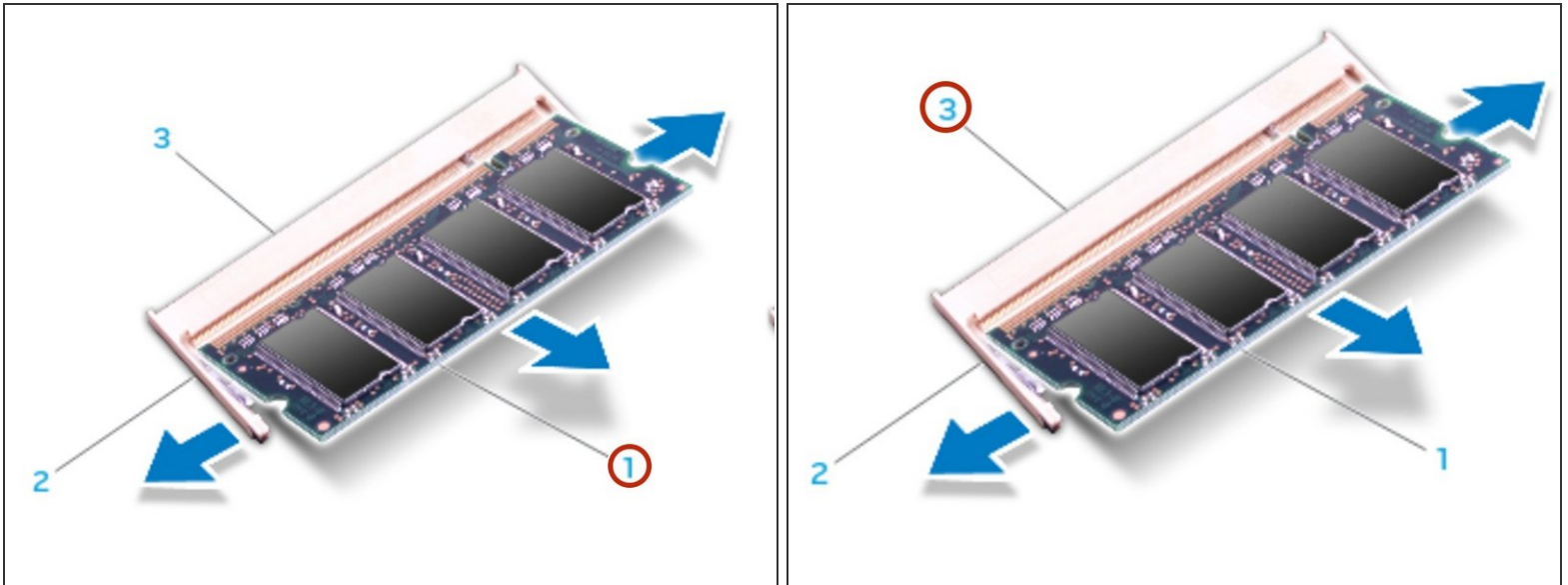
Step 5 — Align the Notch



CAUTION: If you need to install memory modules in two connectors, install a memory module in the lower connector before you install a module in the upper connector

- Align the notch on the **NEW** memory module with the tab on the memory module connector.

Step 6 — Inserting the Memory Module



- Insert the module into the memory module connector at a 45-degree angle, and press the module down until it clicks into place. If you do not hear the click, remove the module and reinstall it.

⚠ CAUTION: If the memory module door is difficult to close, remove the memory module and reinstall it. Forcing the memory module door to close may damage your computer.

ℹ NOTE: If the memory module is not installed properly, the computer may not boot.

To reassemble your device, follow these instructions in reverse order.