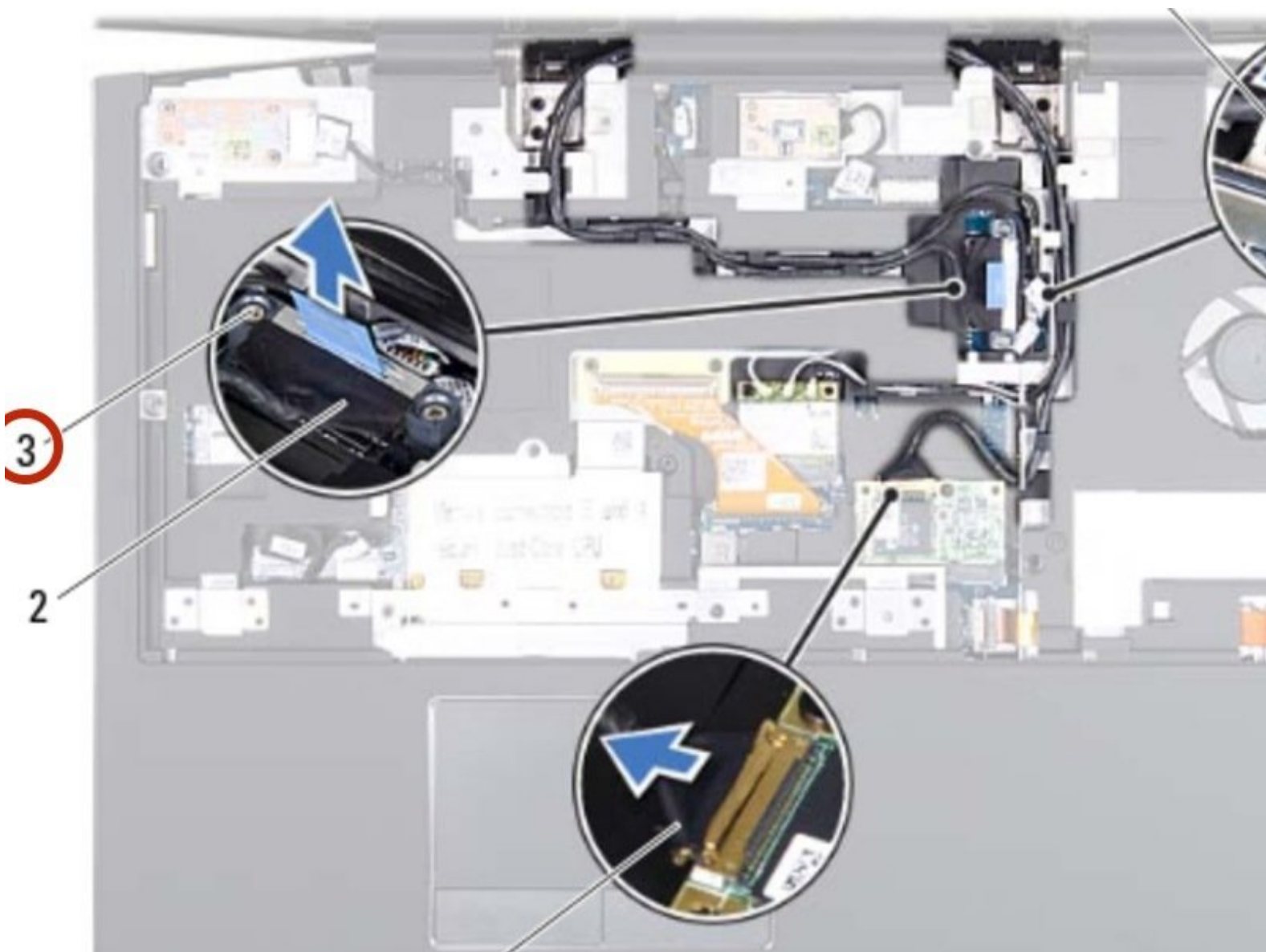




# Dell Alienware M17x R3 Display Assembly Replacement

Written By: Terrence15



---

## INTRODUCTION

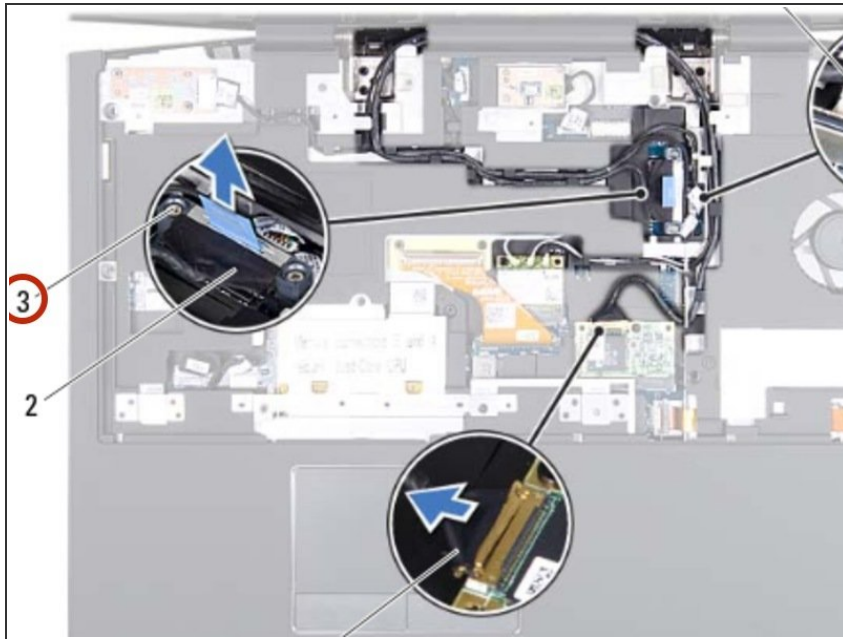
In this guide, we will show you how to remove and replace the Display Assembly.

---

### TOOLS:

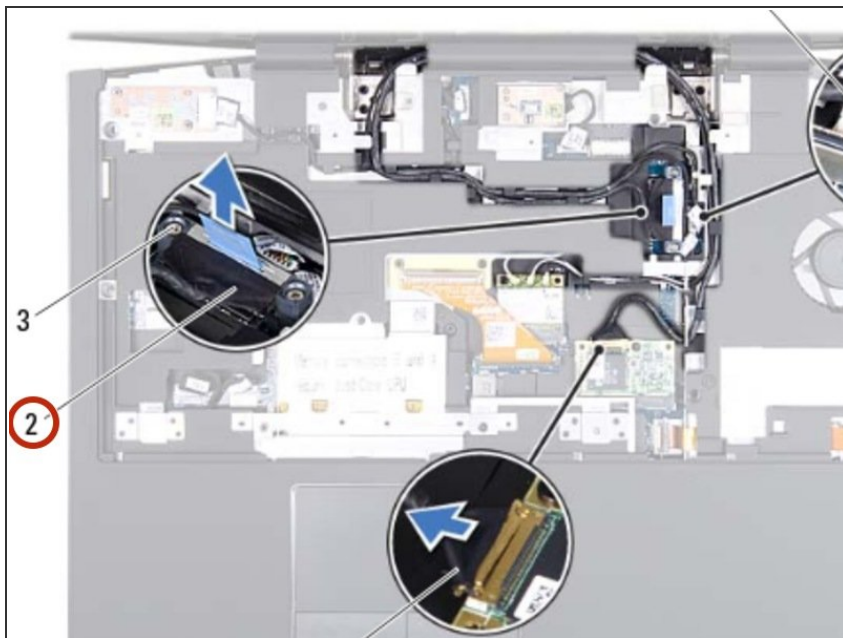
- [Phillips #0 Screwdriver](#) (1)
-

## Step 1 — Loosen the Screws



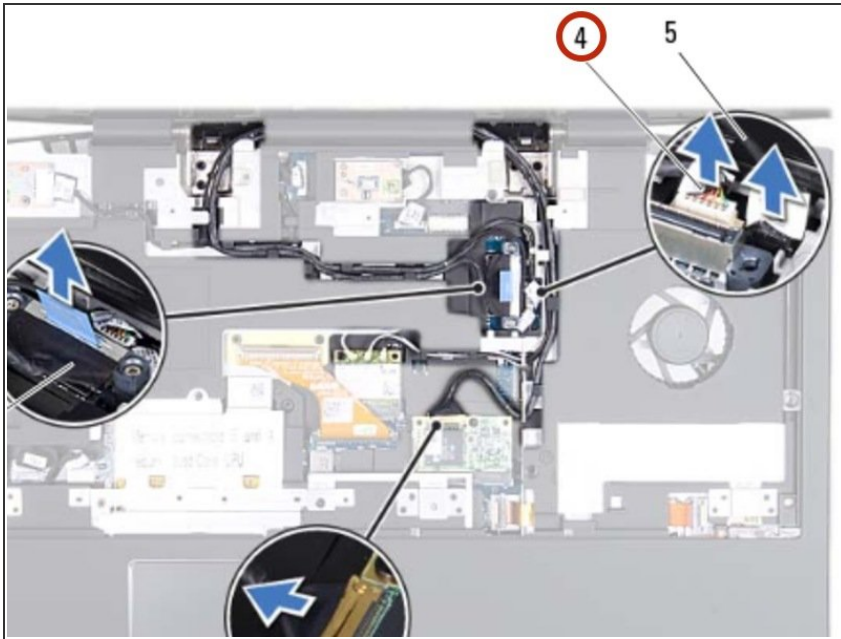
- Loosen the two captive screws that secure the display cable to the system board.

## Step 2 — Disconnecting the Display Cable



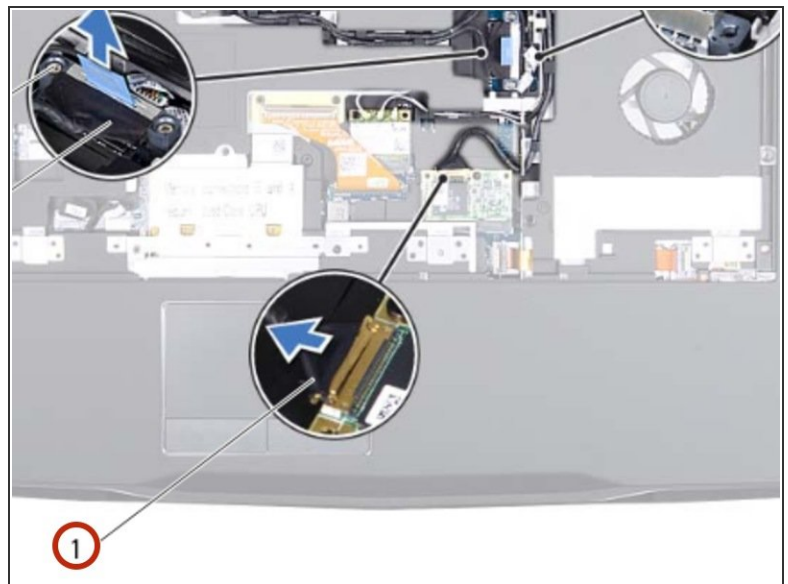
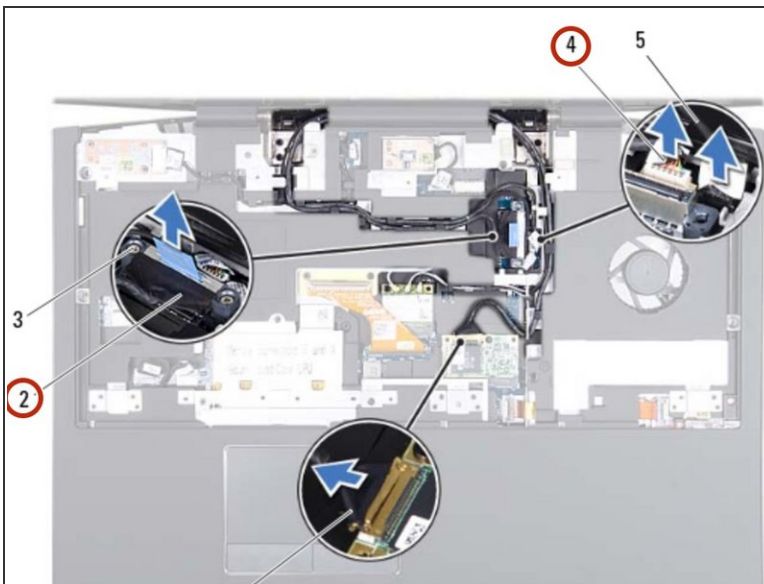
- Using the pull-tab, pull the display cable to disconnect the display cable from the connector on the system board.

### Step 3 — Disconnecting the Camera Cable



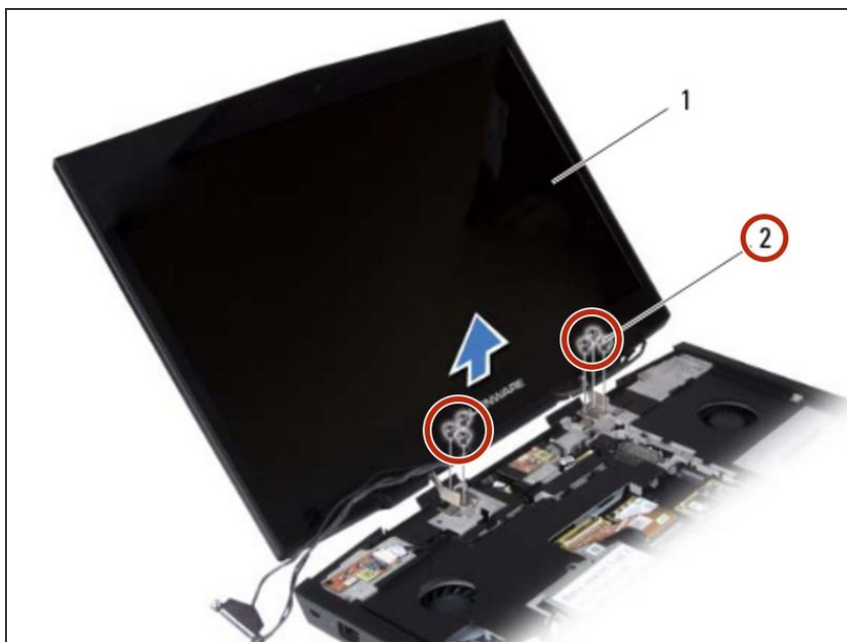
- Disconnect the camera cable and infrared cable from the respective system board connectors.

### Step 4 — Remove the Cables



- Note the routing of the display cable, camera cable, infrared cable, wirelessHD card cable, Mini-Card antenna cables and remove the cables from the routing guides on the palm rest assembly.

## Step 5 — Remove the Screws



- Remove the six screws that secure the display assembly to the computer base.

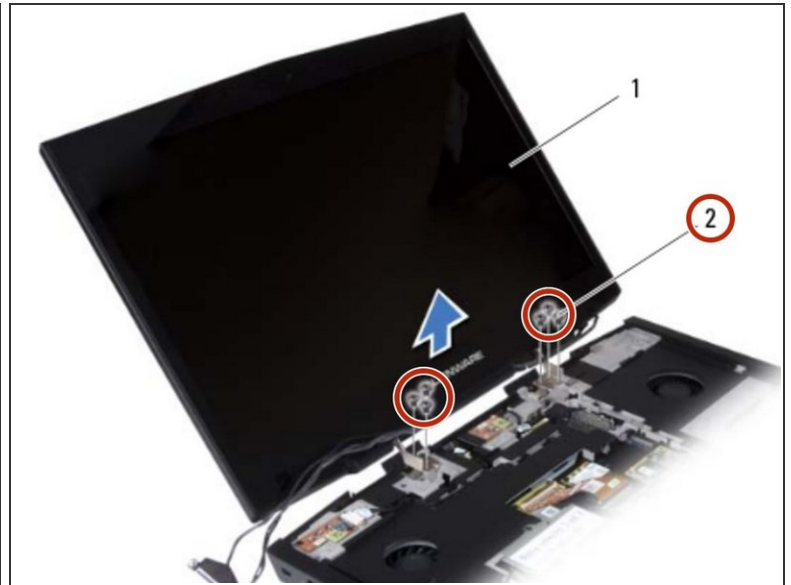
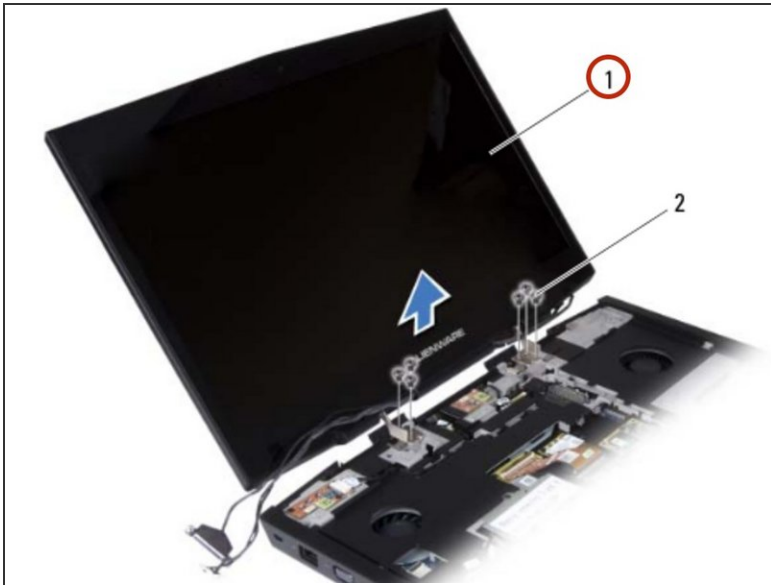
## Step 6 — Removing the Display Assembly



- Lift the display assembly off the computer.

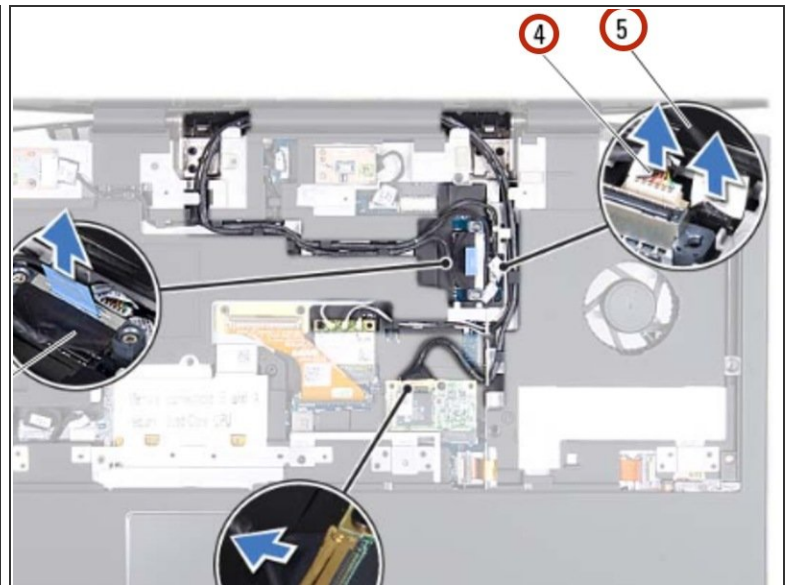
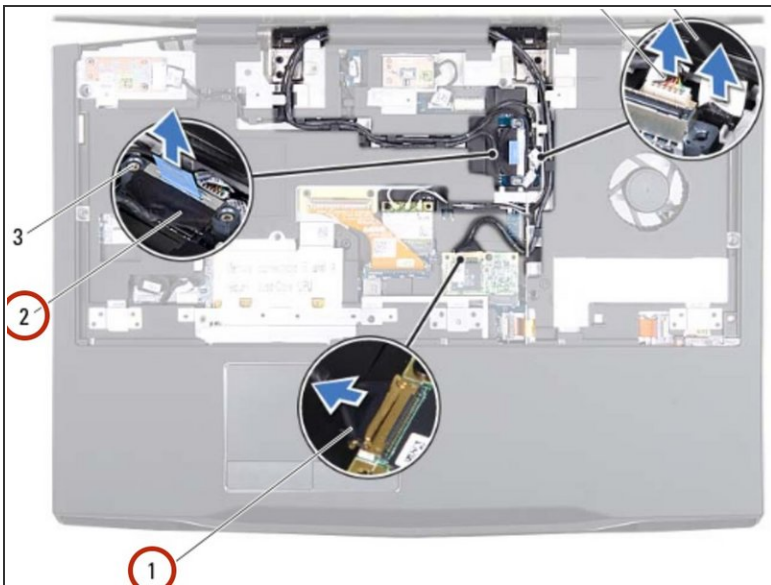


## Step 7 — Securing the Display Assembly



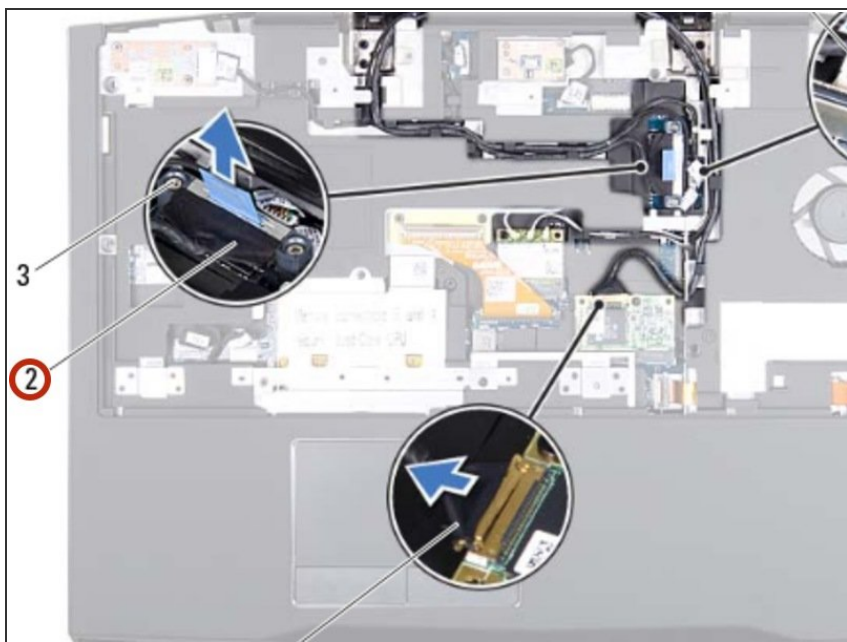
- Place the **NEW** display assembly in position and replace the six screws that secure the display assembly to the computer base.

## Step 8 — Route the Cables



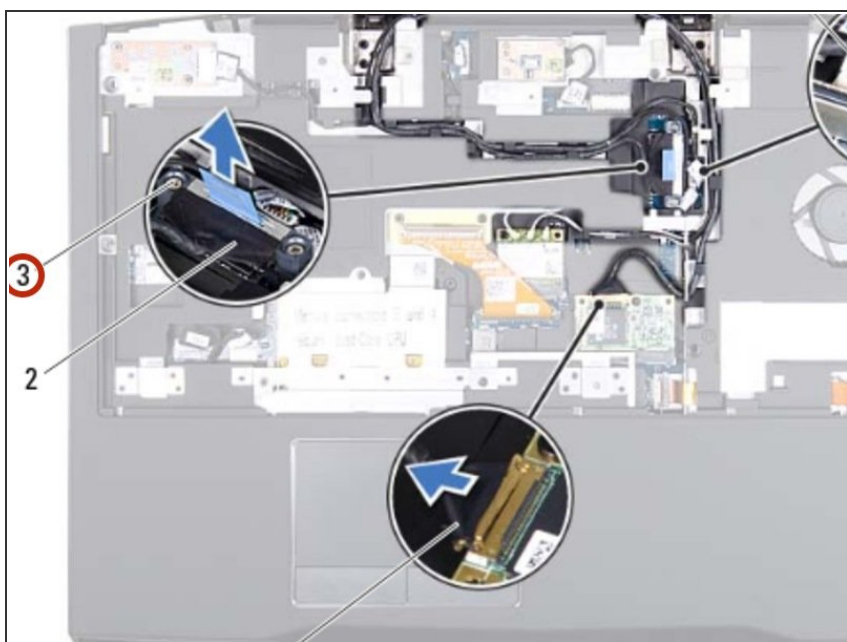
- Route the display cable, camera cable, infrared cable, wirelessHD card cable, and Mini-Card antenna cables through the routing guides on the palm rest assembly.

## Step 9 — Connecting the Display Cable



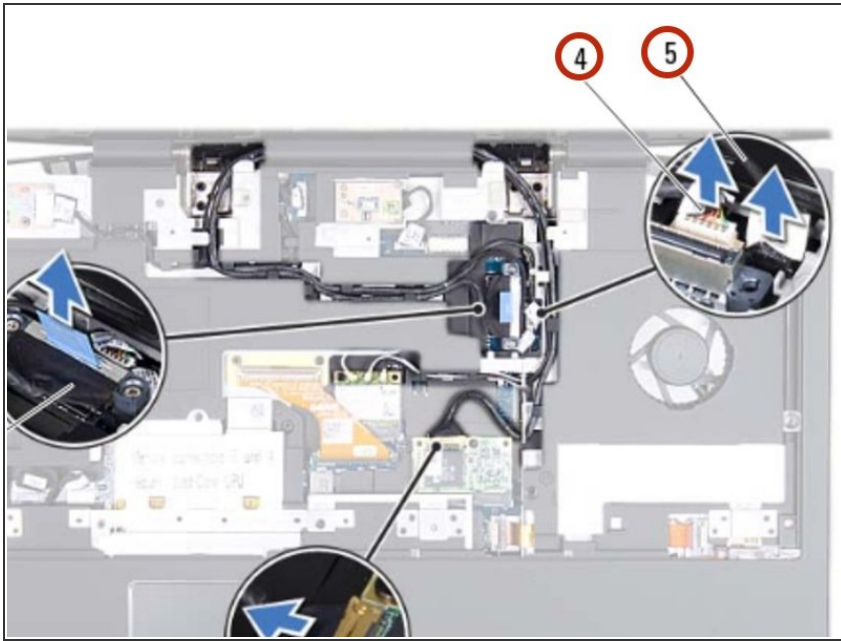
- Connect the display cable to the connector on the system board.

## Step 10 — Tighten the Screws



- Tighten the two captive screws that secure the display cable to the system board.

## Step 11 — Connect the Camera Cable



- Connect the camera cable and infrared cable to the respective system board connectors.

To reassemble your device, follow these instructions in reverse order.