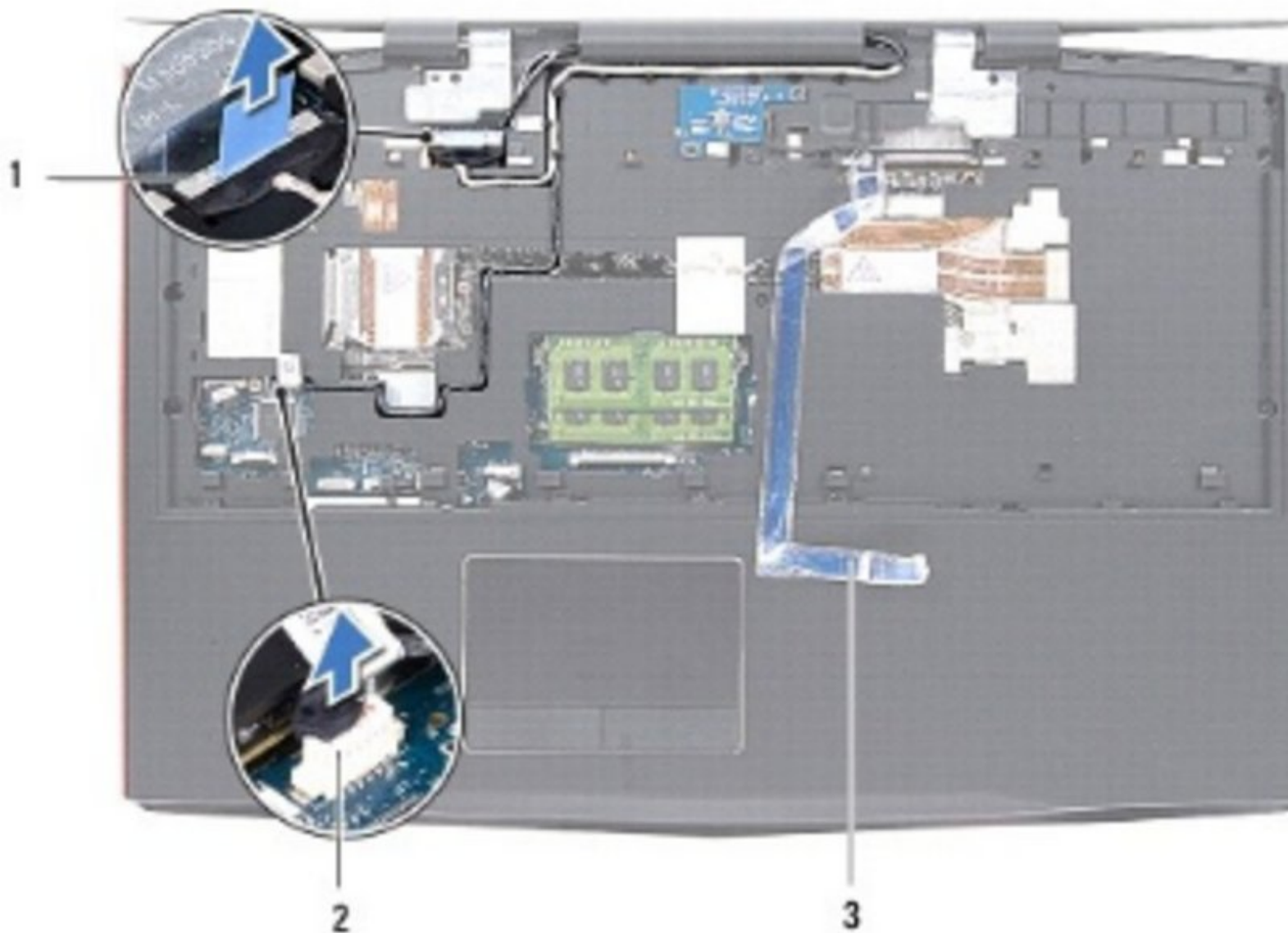




Dell Alienware M18x Display Assembly Replacement

Written By: Terrence15



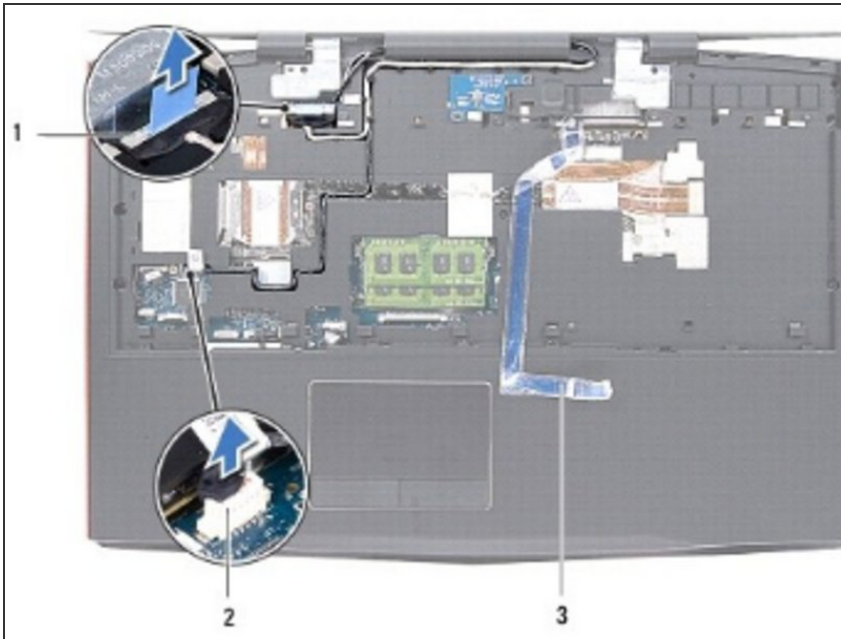
INTRODUCTION

In this guide, we will show you how to remove and replace the Display Assembly.

TOOLS:

- [Phillips #0 Screwdriver](#) (1)
-

Step 1 — Pull the Display Cable



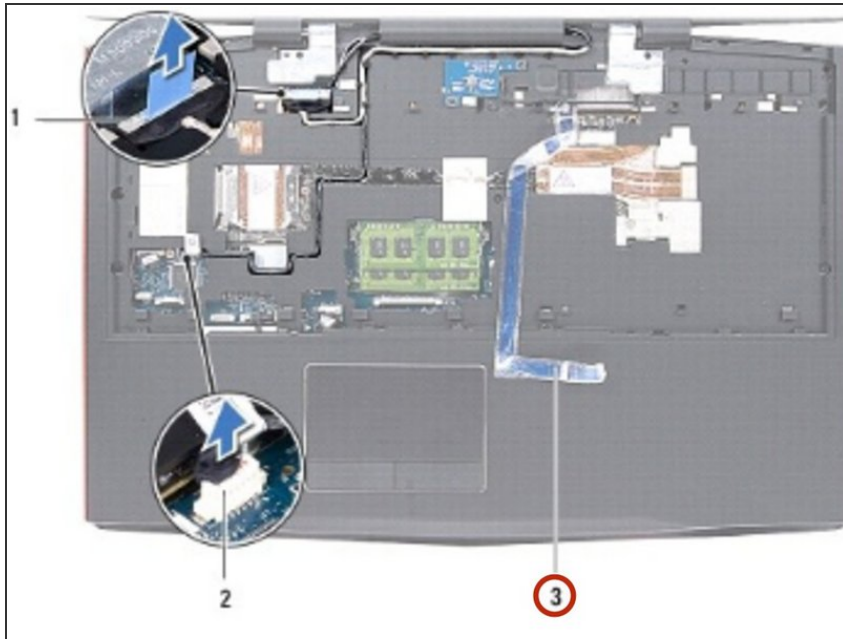
WARNING: Before working inside your computer, read the safety information that shipped with your computer.

CAUTION: To avoid electrostatic discharge, ground yourself by using a wrist grounding strap or by periodically touching an unpainted metal surface (such as a connector on your computer).

CAUTION: Only a certified service technician should perform repairs on your computer. Damage due to servicing that is not authorized by Dell is not covered by your warranty.

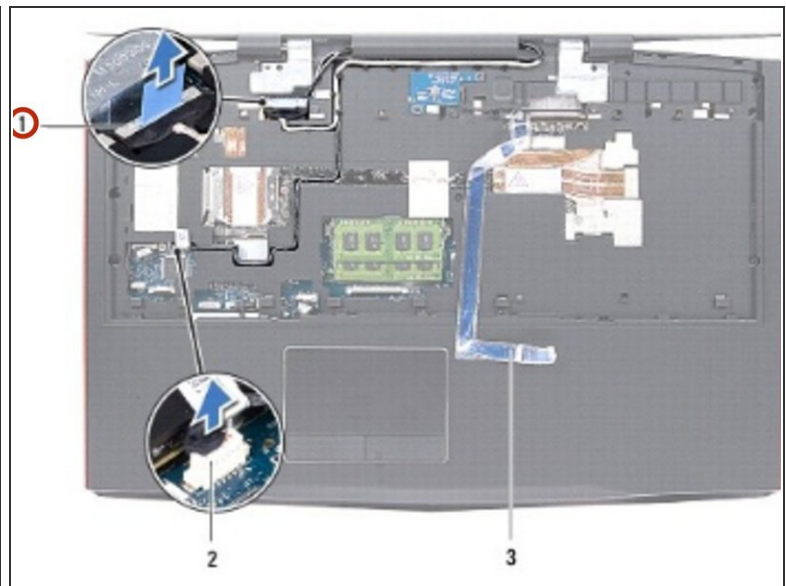
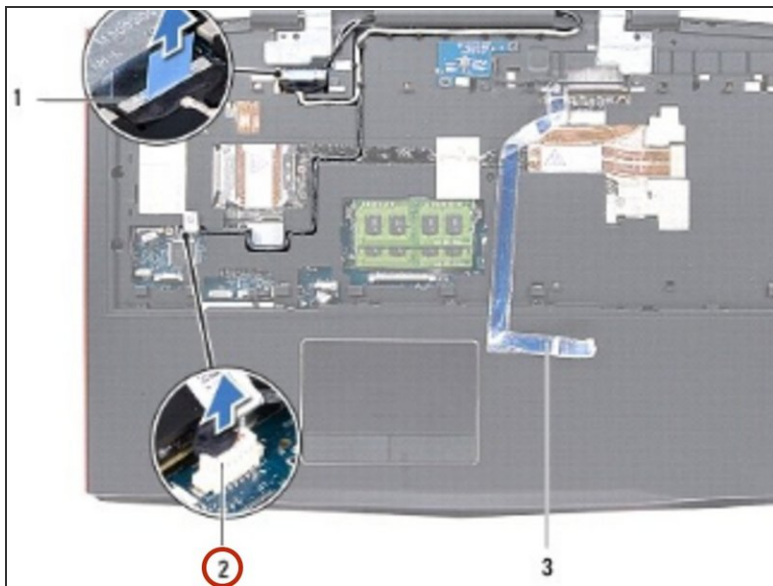
- Using the pull-tab, pull the display cable to disconnect the display cable from the connector on the system board.

Step 2 — Disconnecting the Video-Card Connector Cable



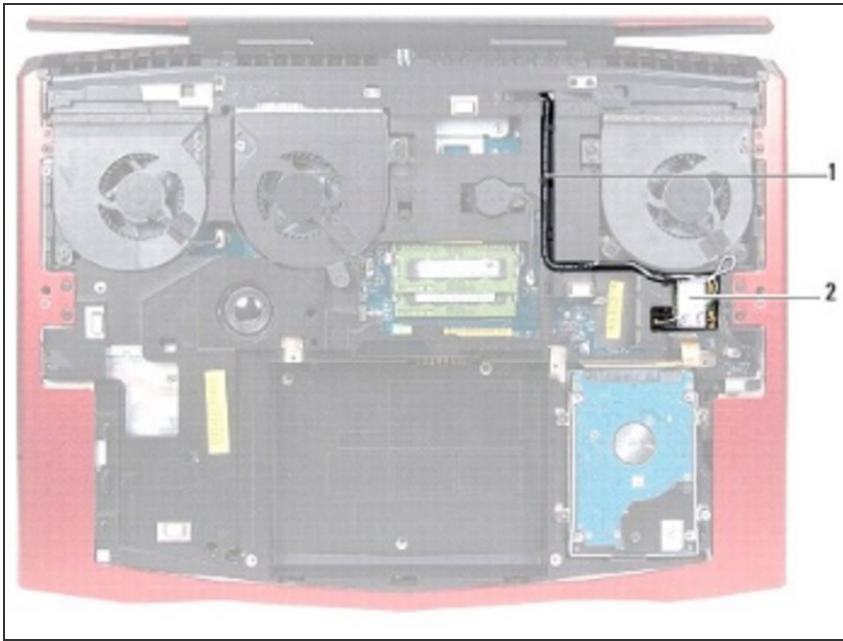
- Disconnect and peel off the video-card connector cable from the connector on the system board.

Step 3 — Disconnecting the LED-Logo Board Cable



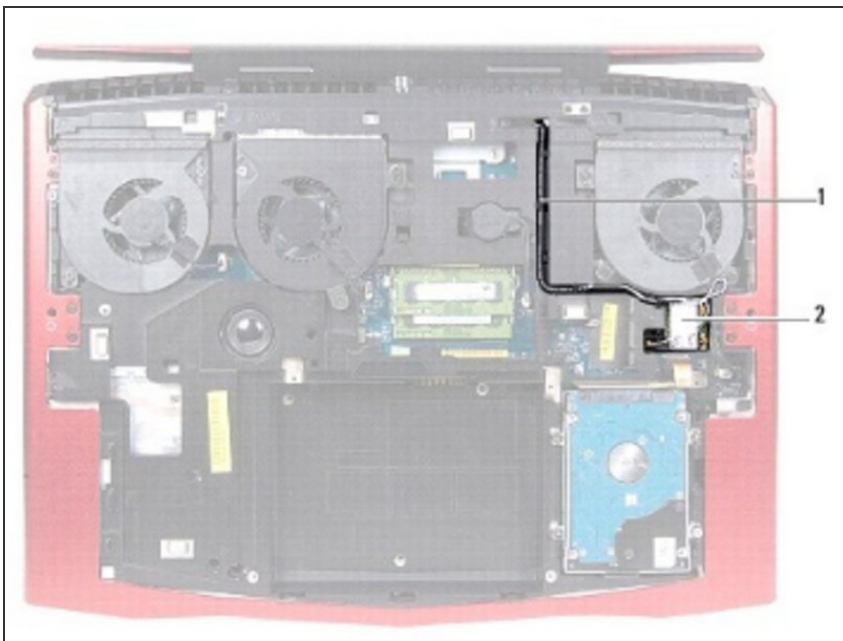
- Disconnect the LED-logo board cable from the connector on the system board.

Step 4 — Close the Display



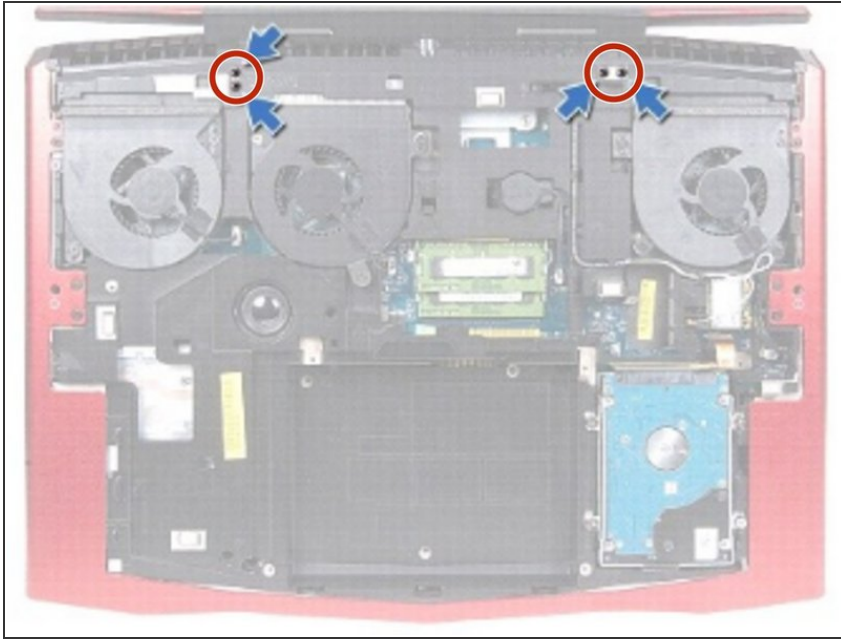
- Close the display and turn the computer over.

Step 5 — Removing the Cables



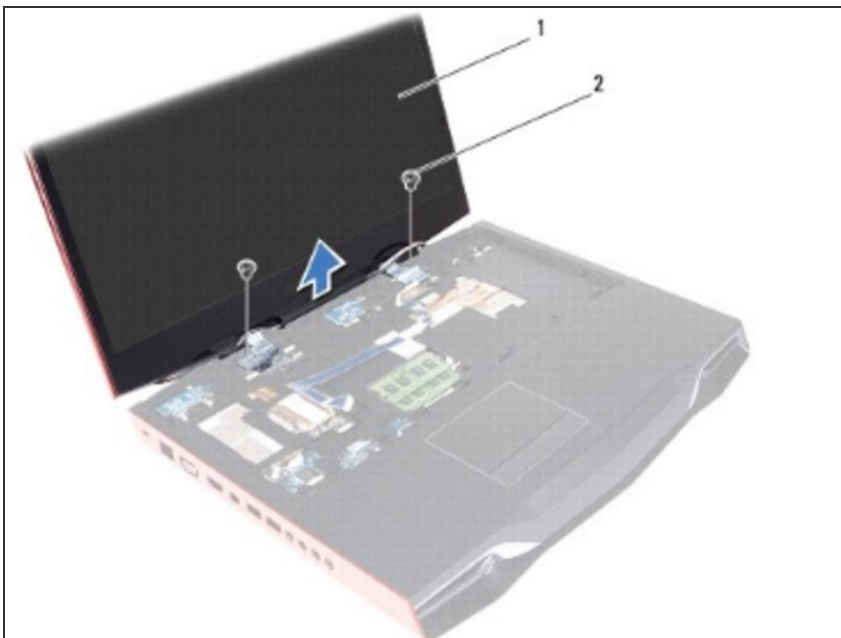
- Disconnect the antenna cables from the Mini-Card.
- Note the routing of the antenna cables, and then remove the cables from the routing guides on the computer base.

Step 6 — Remove the Screws



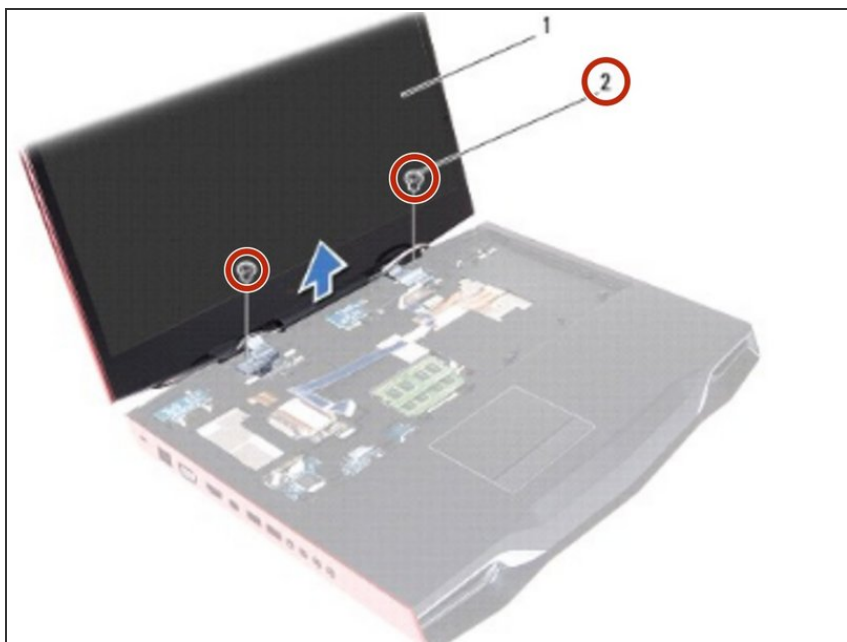
- Remove the four screws that secure the display assembly on the computer base.

Step 7 — Note the Routing



- Turn the computer over and open the display.
- Note the routing of the display cable and LED -logo board cable, and then remove the cables from the routing guides on the palm-rest assembly.

Step 8 — Remove the Screws



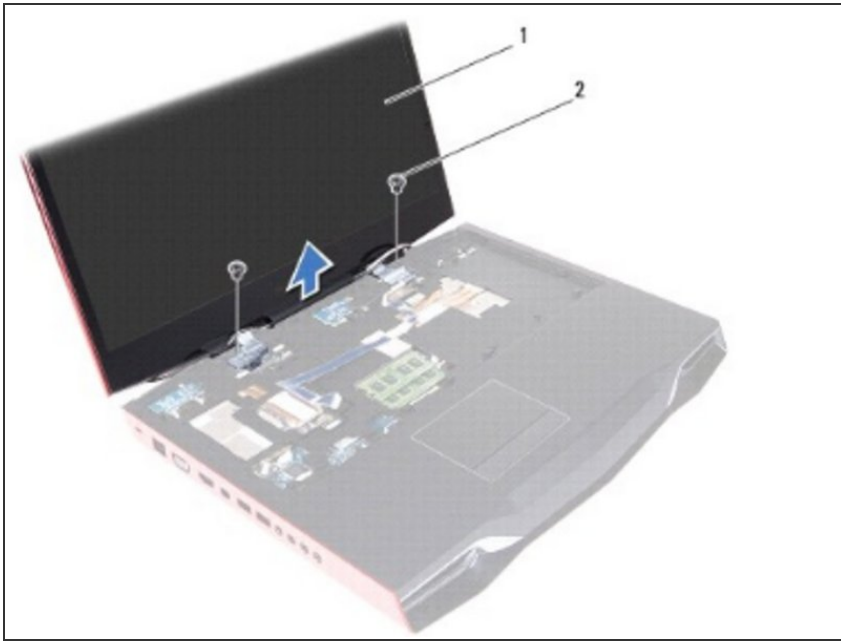
- Remove the two screws, on the display hinges, that secure the display assembly to the computer base.

Step 9 — Gently Slide the Antenna Cables



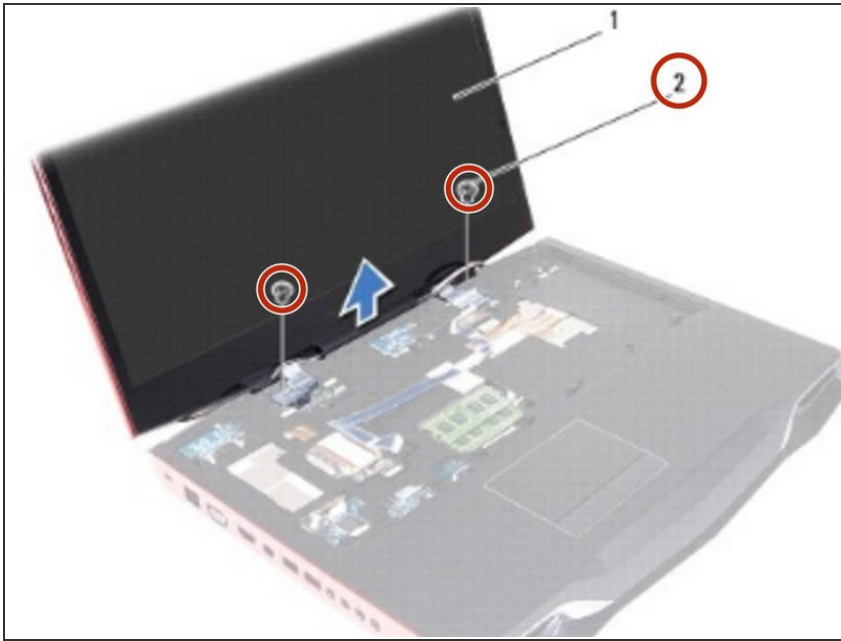
- Gently slide out the antenna cables through the slot on the computer base.

Step 10 — Moving the Display



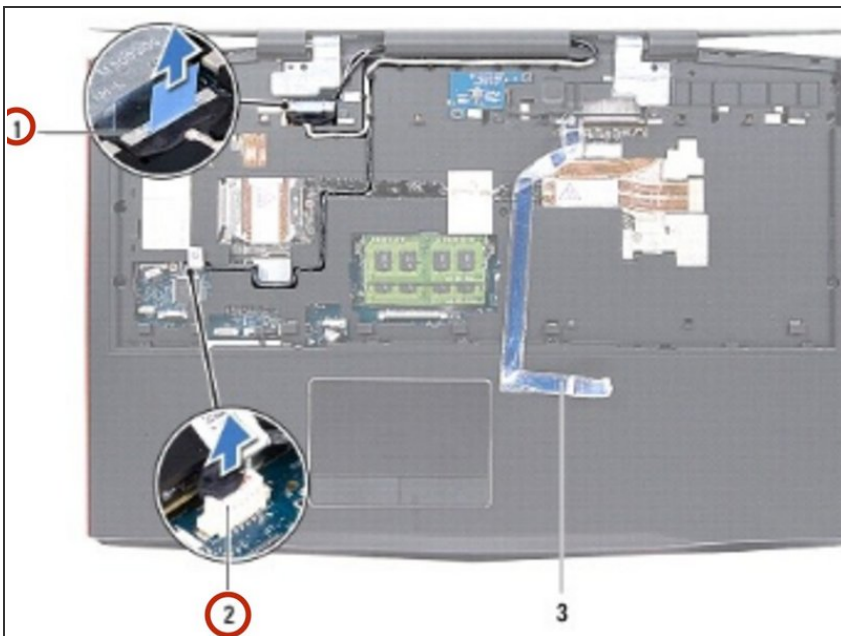
- Move the display to a perpendicular position to the computer base, and then lift the display assembly off the computer.

Step 11 — Placing the Display Assembly



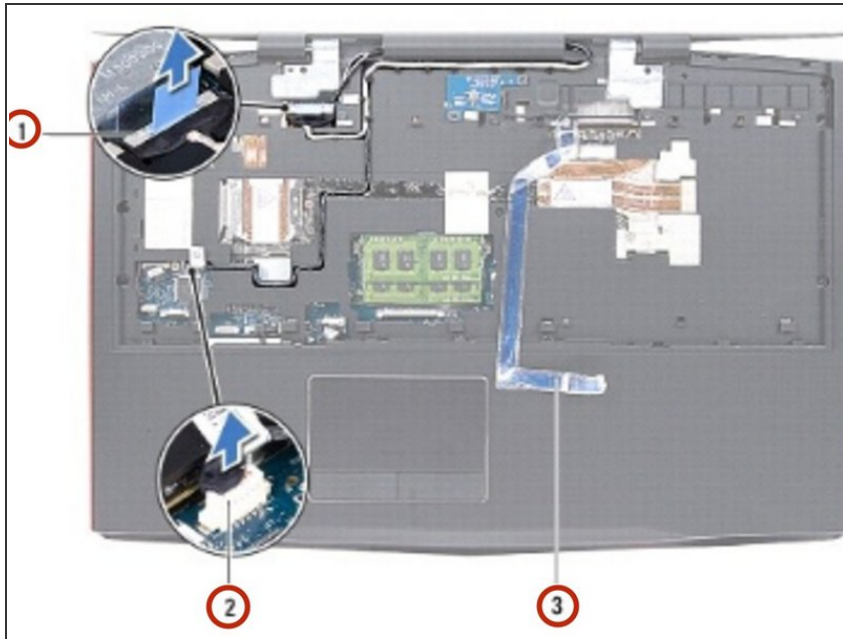
- Place the **NEW** display assembly in position and replace the two screws, on the display hinges, that secure the display assembly to the computer base

Step 12 — Routing the Display Cable



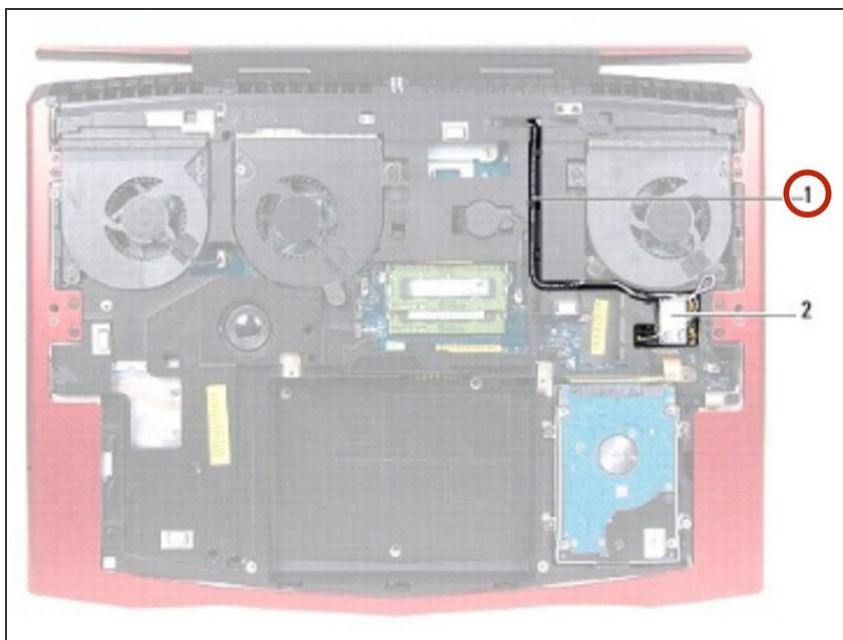
- Route the display cable and LED - logo board cable through the routing guides on the palm-rest assembly.

Step 13 — Connecting the Display Cable



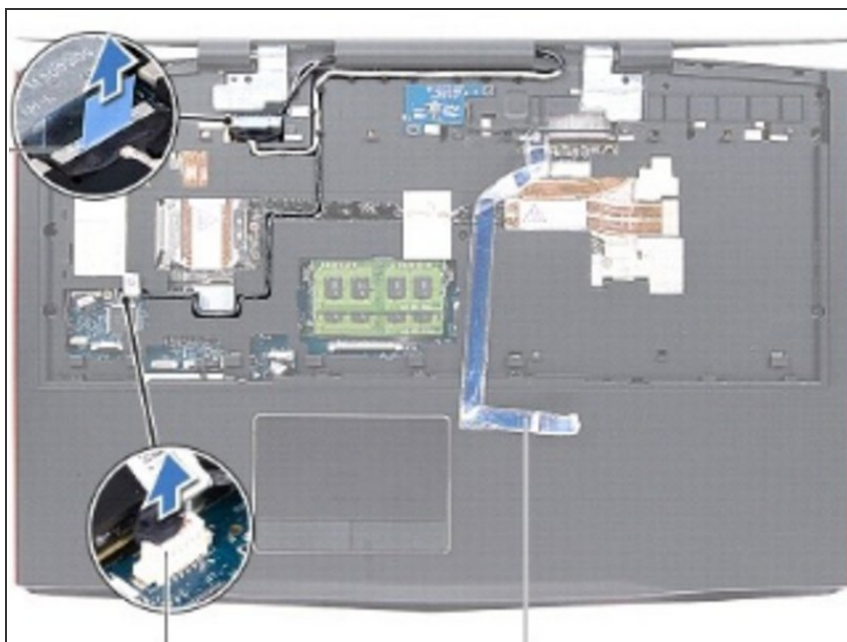
- Connect the display cable, video-card connector cable, and LED-logo board cable to the respective connectors on the system board.

Step 14 — Sliding the Cables



- Slide the Mini-Card antenna cables through the slot on the computer base.

Step 15 — Close the Display



- Close the display and turn the computer over.

To reassemble your device, follow these instructions in reverse order.