



Dell Chromebook 11 3180 Battery Replacement

This page will guide you through the replacement of your battery.

Written By: Devon Paul



INTRODUCTION

The battery is a very common part to need to replace on a computer, especially as it becomes older. This is a very straightforward process and will only require removing a few screws and unplugging a cable. It should only take a couple of minutes, and there is little damage to be done.



TOOLS:

- [iFixit Opening Tools](#) (1)
- [Tweezers](#) (1)
- [Phillips #0 Screwdriver](#) (1)



PARTS:

- [Dell Chromebook 11 3180 Battery](#) (1)

Step 1 — Back Cover



- Set your laptop upside down on your work space.

Step 2



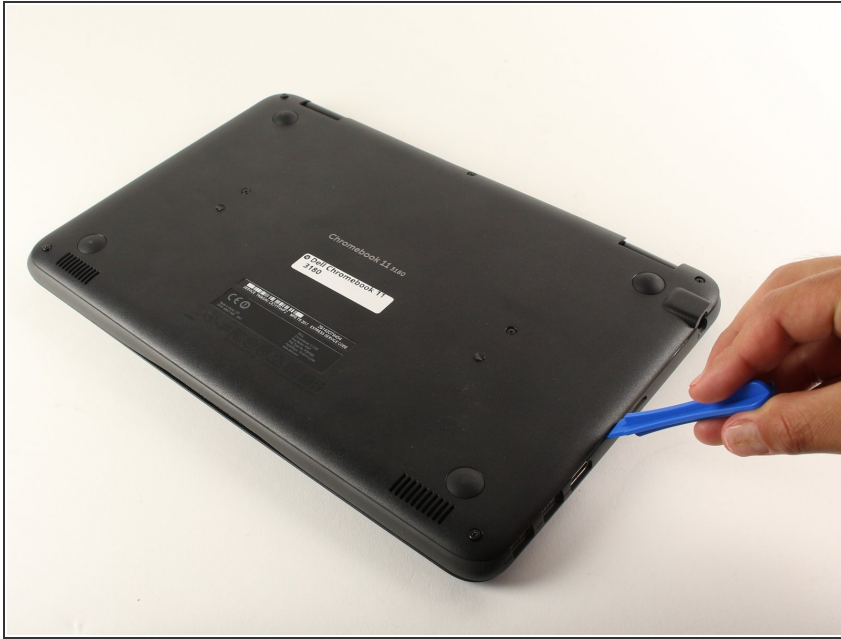
- Using tweezers, remove the circular stickers that are covering the two screws near the middle of the back cover. Stick them to the laptop next to the screws.

Step 3



- Using a Phillips #0 screwdriver, loosen all seven 2.5mm screws on the back cover of the device.
- ⓘ These screws will stay attached to the back cover, so just loosen them until they rattle around.

Step 4



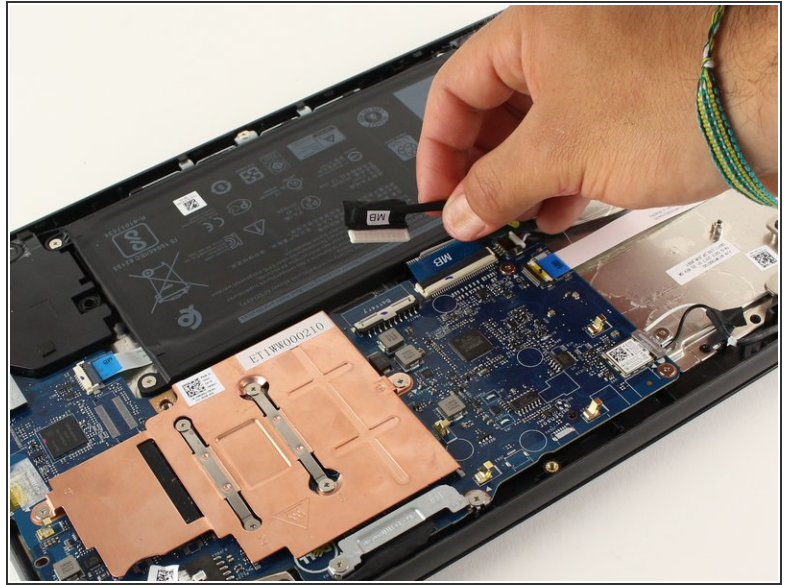
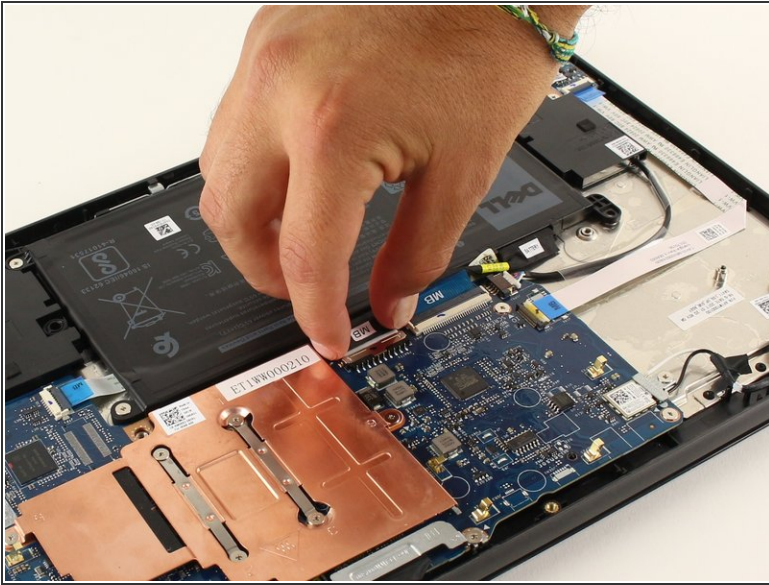
- Using a plastic opening tool, begin to separate the back cover from the body of the computer.
- ❗ If you have trouble prying a particular part of the back cover off, make sure that the nearest screws are fully loosened.

Step 5



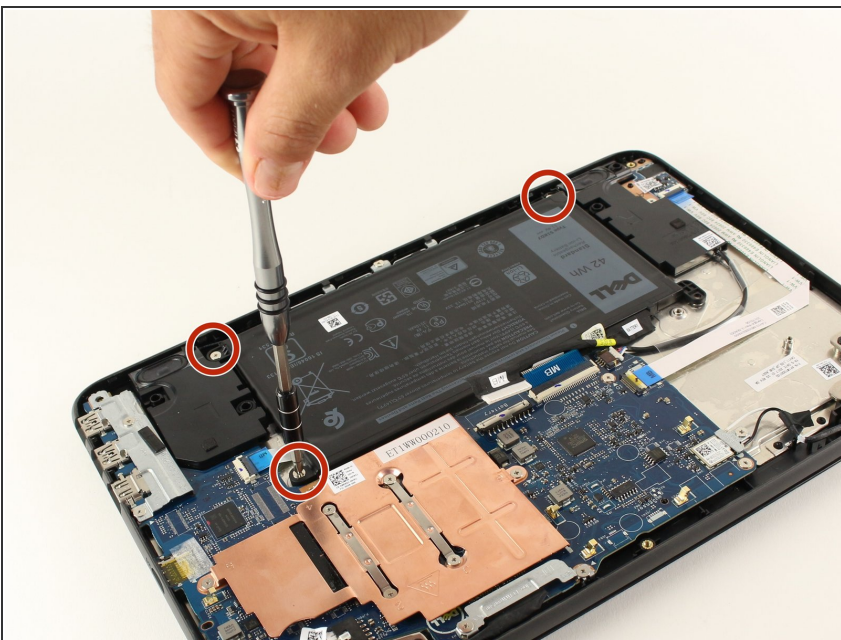
- Using your hands, pull the back cover fully off of the body of the computer.

Step 6 — Battery



- Unplug the battery from the motherboard by gently pulling the black cable header from the motherboard towards the battery.
- ⓘ You can locate this cable by checking that its other end connects to the battery. It has black protective wrap.

Step 7



- Using a Phillips #0 screwdriver, remove each of the three 3mm screws from the battery.

Step 8



- Lift the battery away from the computer to remove it.
- ⓘ If there is any resistance to the battery being removed, make sure that all of the screws have been properly removed and that nothing is blocking the battery.

To reassemble your device, follow these instructions in reverse order.