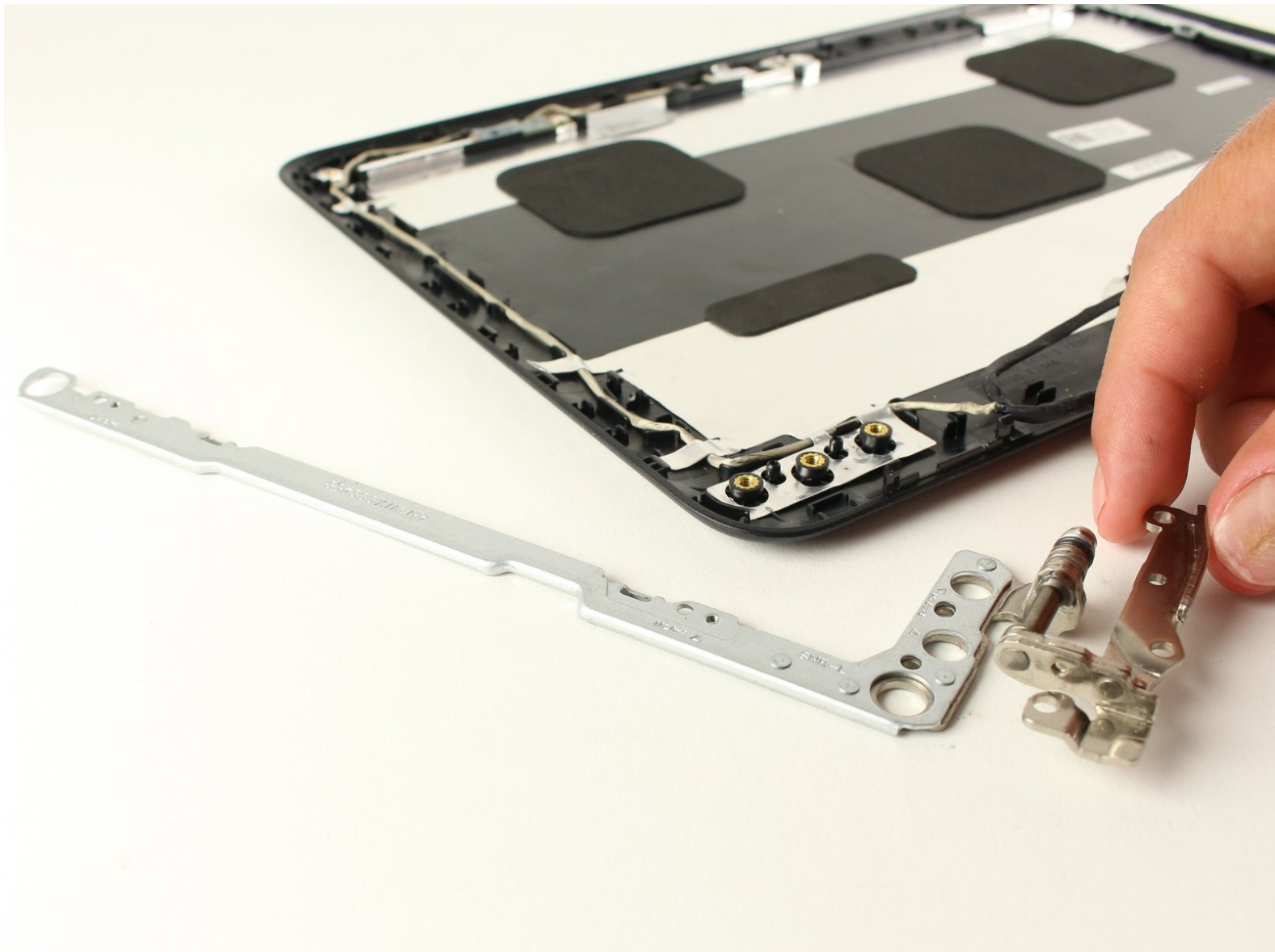




# Dell Chromebook 11 3180 Display Hinges Replacement

This page will guide you through replacing the hinges of the Chromebook.

Written By: Devon Paul



## INTRODUCTION

The display hinges of your laptop may need to be replaced. They can get damaged from dropping your computer, or even just from everyday wear. This replacement is a little bit more lengthy, but still very conquerable for someone with minimal experience working with electronics.



### TOOLS:

- [Phillips #0 Screwdriver](#) (1)
  - [iFixit Opening Tools](#) (1)
  - [Tweezers](#) (1)
-

## Step 1 — Back Cover



- Set your laptop upside down on your work space.

## Step 2



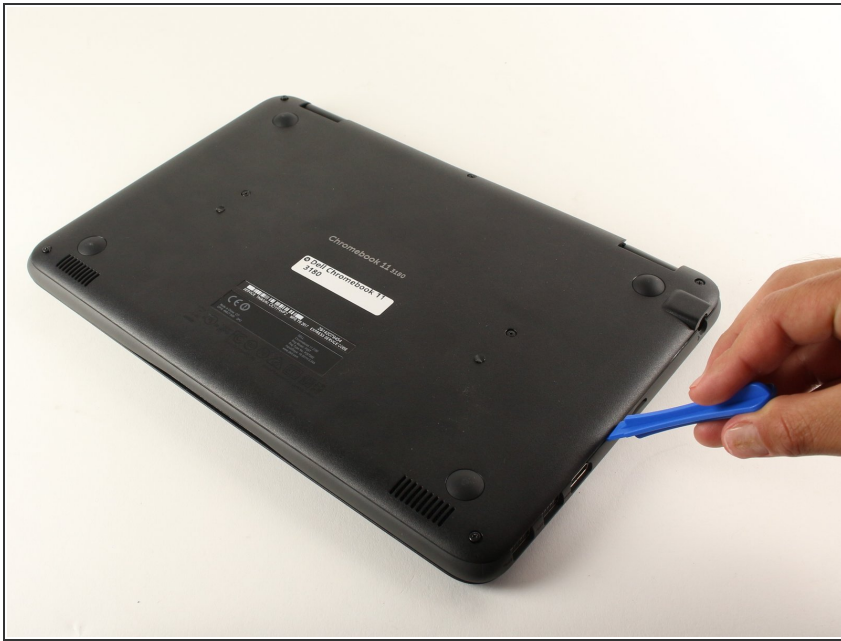
- Using tweezers, remove the circular stickers that are covering the two screws near the middle of the back cover. Stick them to the laptop next to the screws.

## Step 3



- Using a Phillips #0 screwdriver, loosen all seven 2.5mm screws on the back cover of the device.
- ⓘ These screws will stay attached to the back cover, so just loosen them until they rattle around.

## Step 4



- Using a plastic opening tool, begin to separate the back cover from the body of the computer.
- ❗ If you have trouble prying a particular part of the back cover off, make sure that the nearest screws are fully loosened.

## Step 5



- Using your hands, pull the back cover fully off of the body of the computer.

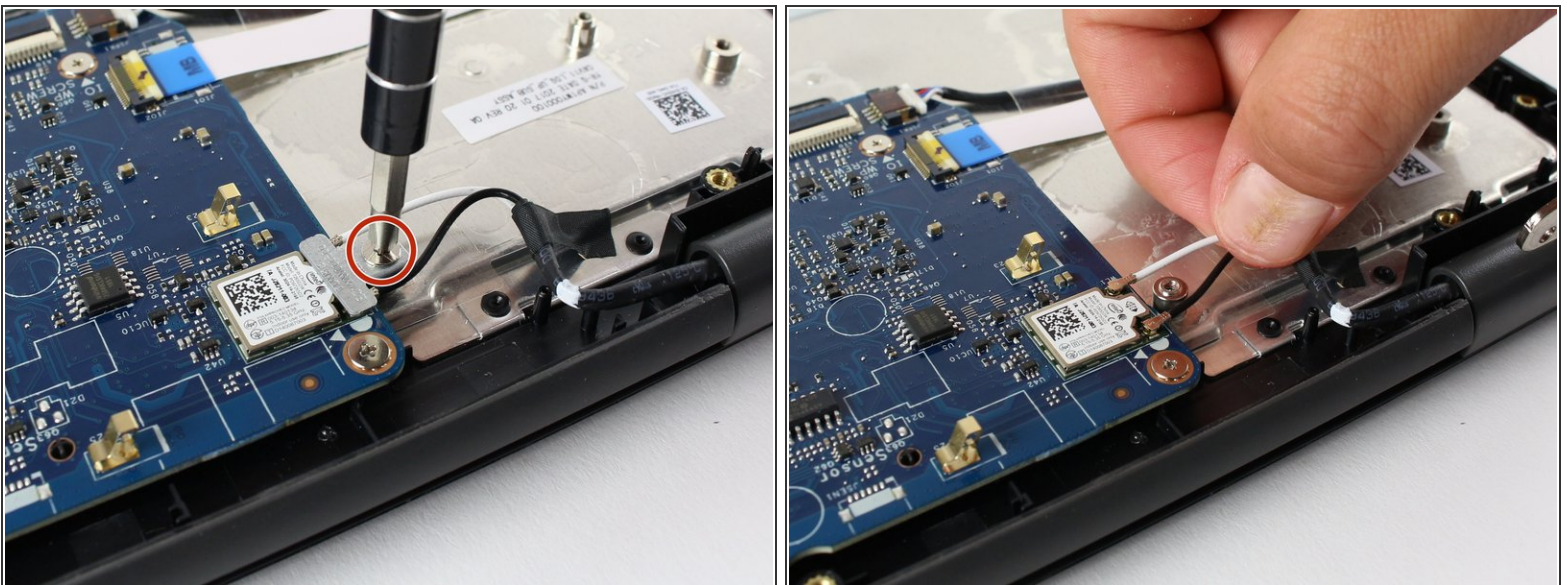


## Step 6 — Screen



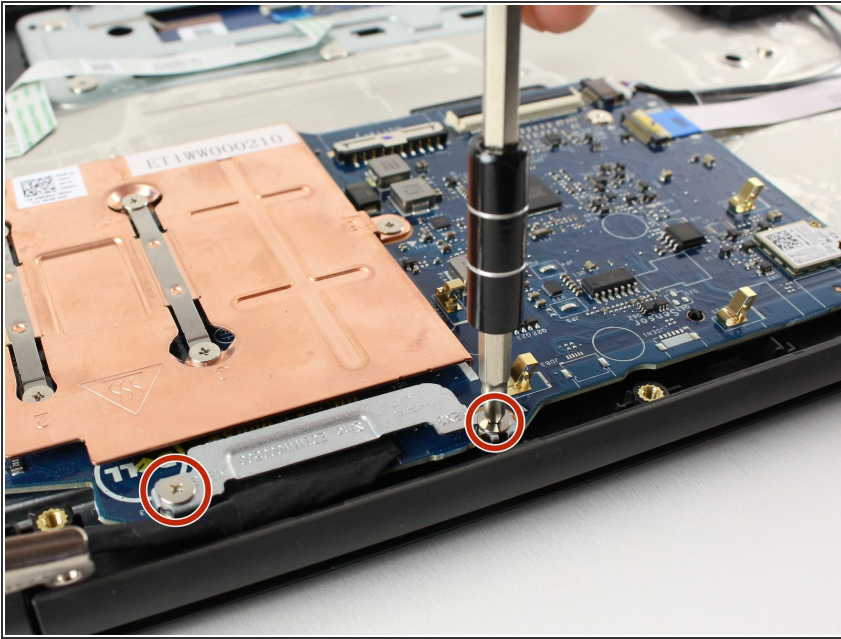
- Using a Phillips #0 screwdriver, remove each of the five 5.5mm screws.

## Step 7



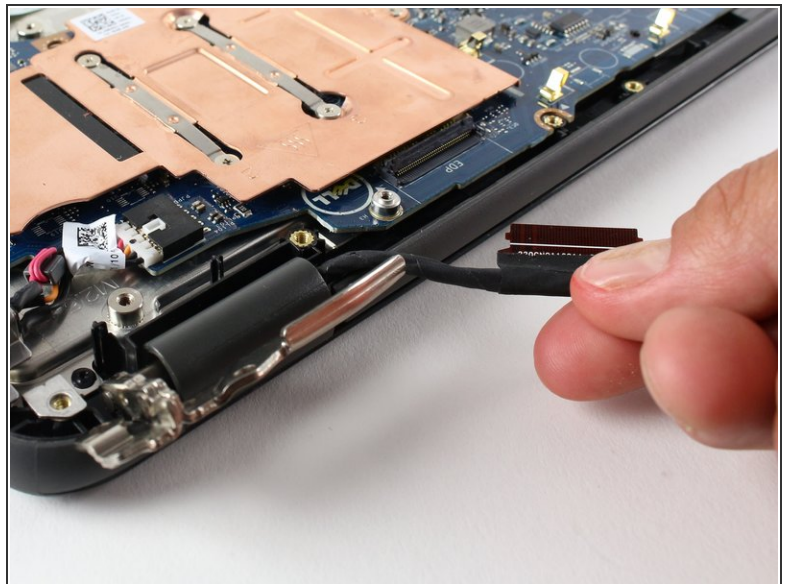
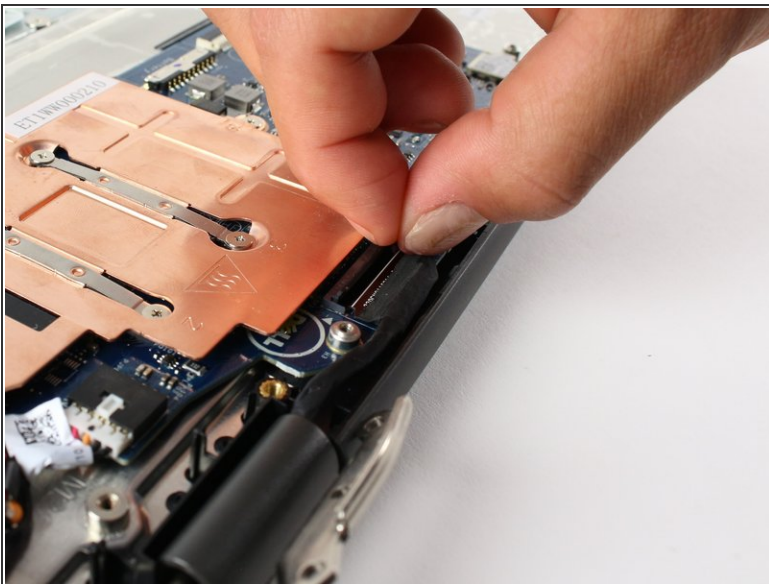
- Using a Phillips #0 screwdriver, remove the single 3mm Phillips head screw holding down the small metal bracket that covers where the small black and white wires connect to the motherboard.
- Once this screw has been removed. Unplug these two wires by gently pulling them up and away from the motherboard. Hold the wire as close to the end as possible.

## Step 8



- Using a Phillips #0 screwdriver, remove the two 3mm Phillips head screws from the metal bracket that covers where the wrapped cable from the screen attaches to the motherboard.

## Step 9



- Remove the screen connector cable. To do this, gently lift up on the black tab where the cable plugs into the motherboard.
- Once you have lifted the tab, gently pull the cable horizontally away from the motherboard connector to unplug it.

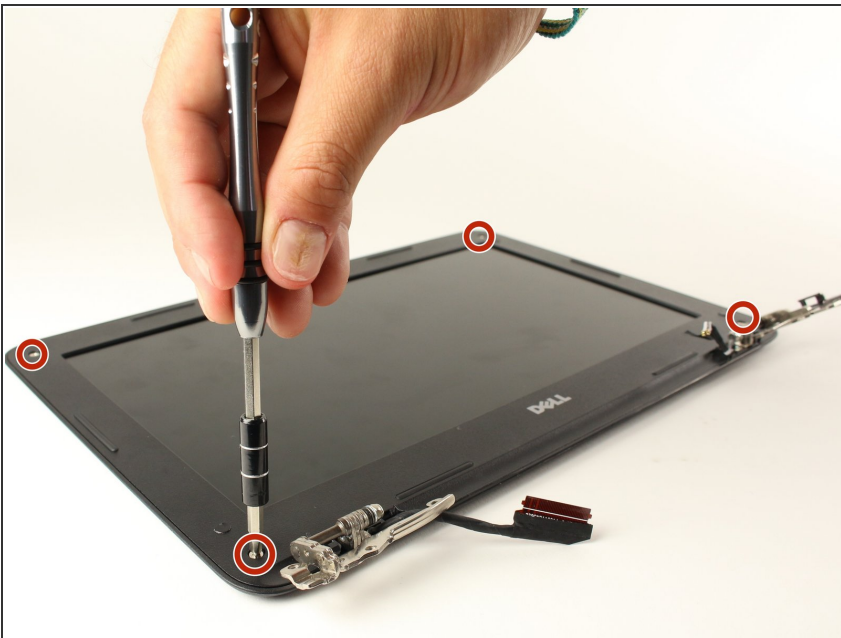


## Step 10



- Using a plastic opening tool, remove the plastic hinge covers by inserting the tool into the gap and prying away from the computer.
- You should now be able to separate the screen assembly from the rest of the laptop.

## Step 11



- Once it's separated from the rest of the computer, place the screen assembly face up on your work space.
- Using tweezers, remove all four stickers covering screws on the front. Stick these to the computer, a few inches from the screw holes.
- Using a Phillips #0 screwdriver, remove all four 3.5mm Phillips head screws from the front of the display assembly.

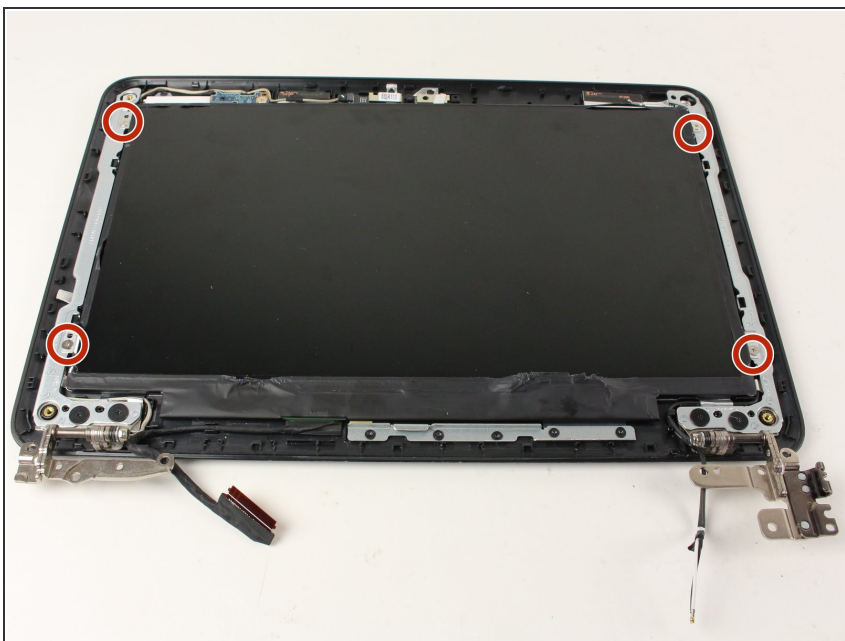


## Step 12



- Using a plastic opening tool to start, and then eventually your hands, pry the front most face of plastic off of the screen assembly.

## Step 13



- Using a Phillips #0 screwdriver, remove all four silver 3mm Phillips head screws that hold the screen tabs to the bracket.

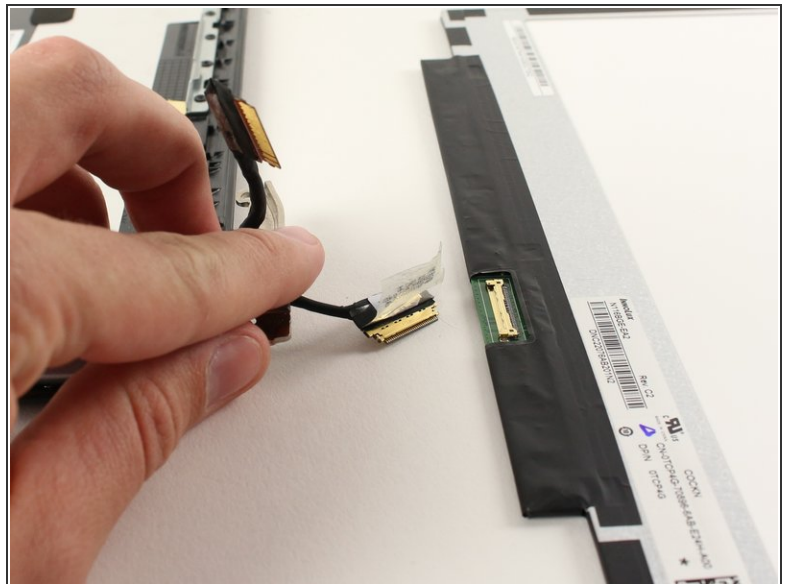
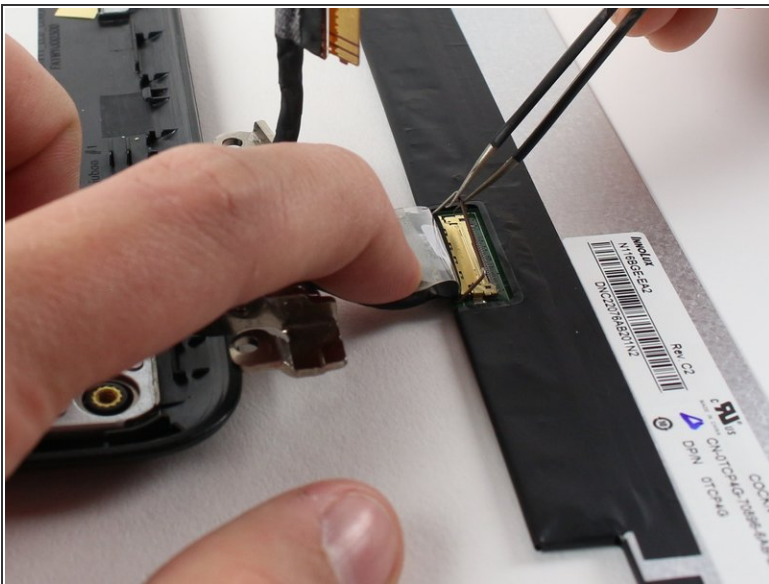
## Step 14



- Lift the screen itself away from the rest of the assembly. Place it face down next to the rest of the assembly.

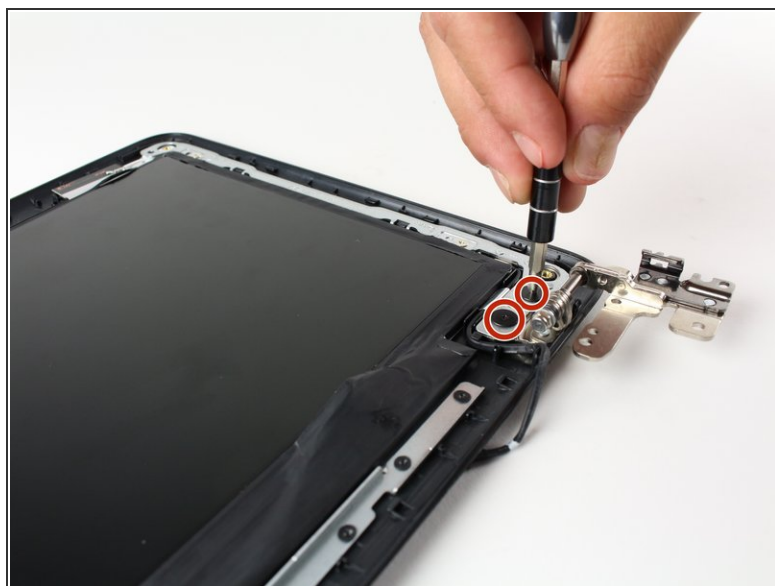
⚠ There will still be cables attached between the screen and the rest of the assembly. Make sure not to tug on them as this may cause damage.

## Step 15



- To unplug the screen, use tweezers to lift the small metal wire on the connector, and then gently pull the cable away from the screen.

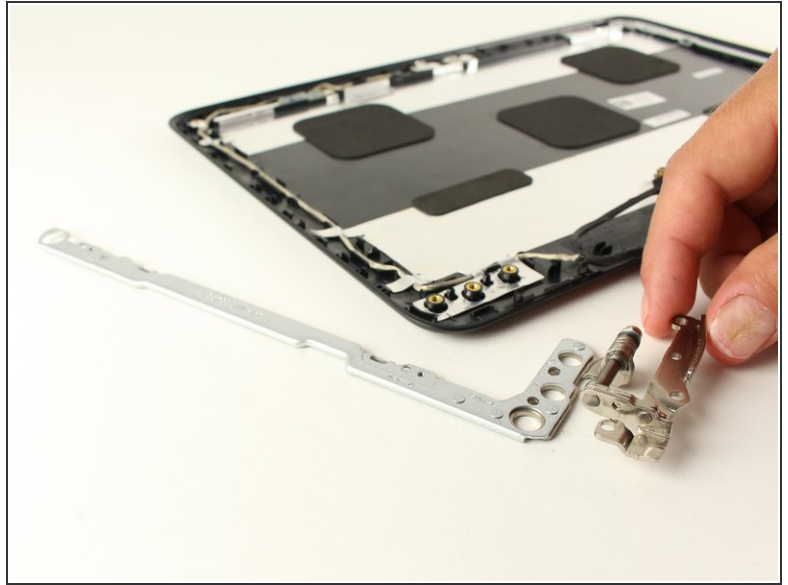
## Step 16 — Display Hinges



- Using a Phillips #0 screwdriver, remove all four of 2.5mm Phillips head screws from the silver metal bracket.
- ⓘ Though the picture shows this step with the screen still in, you should remove the screen first and then remove this bracket.



## Step 17



- Once the screws have been removed, use a plastic opening tool to pry the metal bracket and hinge assembly off of the plastic backing.

To reassemble your device, follow these instructions in reverse order.