



Dell Chromebook 11 CB1C13 Letter & Number Key Replacement

Replacing letter or number keys.

Written By: Jon





TOOLS:

- [Tweezers](#) (1)



PARTS:

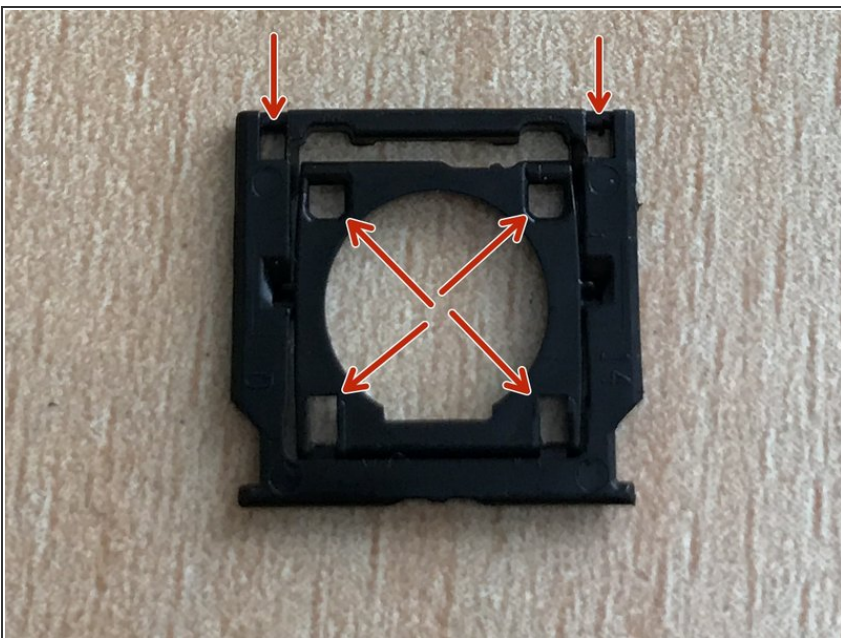
- [Dell Chromebook Palmrest WR67C \(replacement keys\)](#) (1)

Step 1 — Check Metal Clips & Rubber Spring/Membrane for Damage



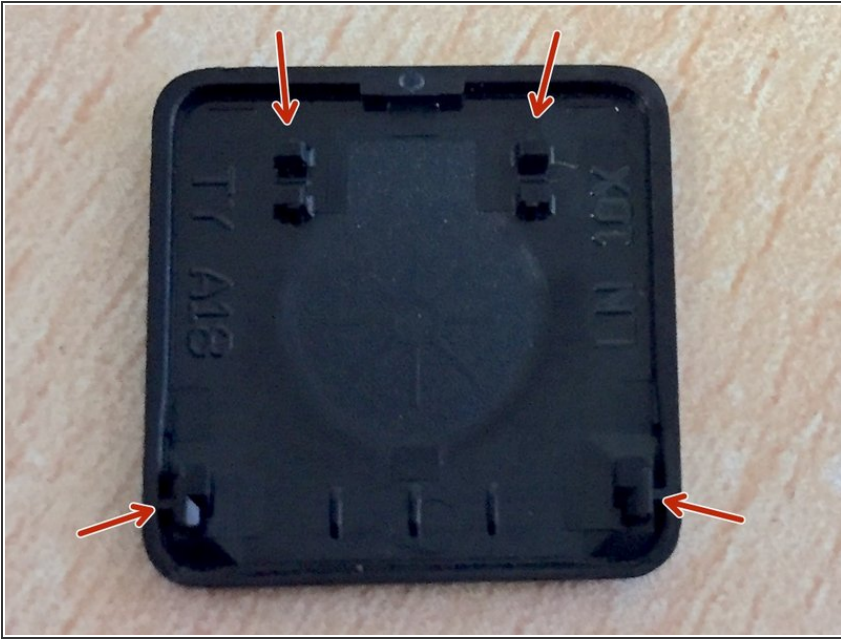
- Check the 4 metal clips that are attached to the palmrest. Look for damaged or missing clips.
- If any of the 4 clips are missing, you will not be able to proceed and will have to replace the entire palmrest.
- Check the condition of the rubber spring/membrane. If it is torn or missing, you will not be able to proceed and will have to replace the entire palmrest.
- If any clips are bent, carefully use your tweezers to bend them back in their original upright position. (See video)

Step 2 — Check Plastic Bracket



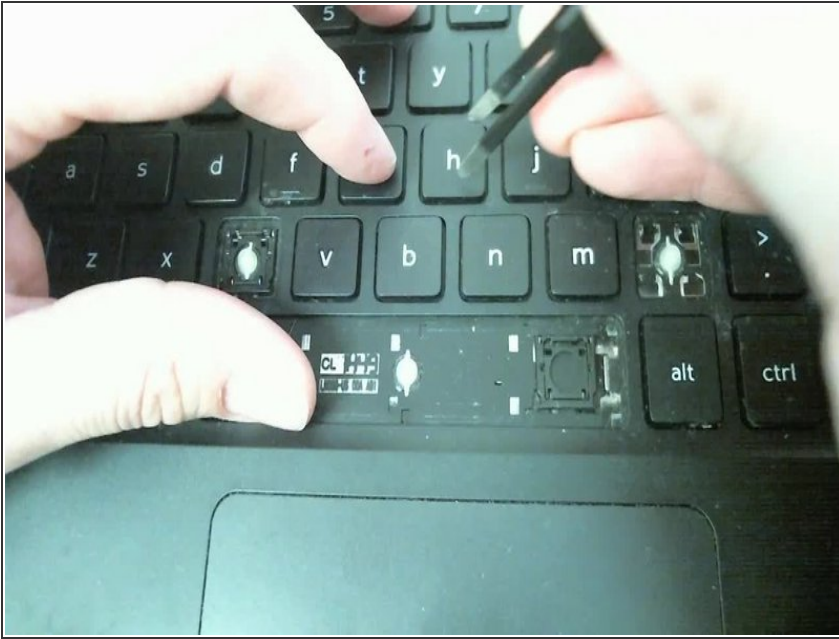
- Check the plastic bracket for damage in these 6 areas.

Step 3 — Check Key for damage



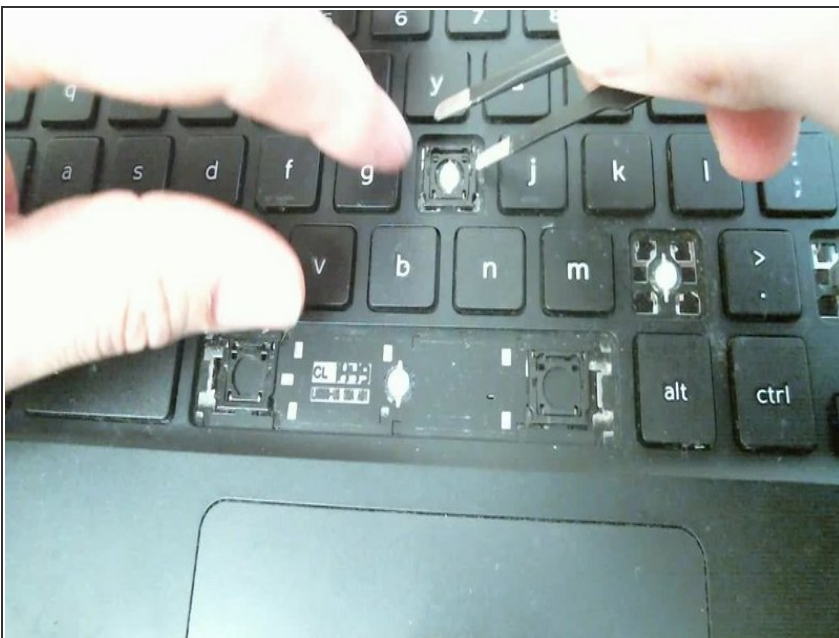
- Check the 4 main points of the key for damage.
- Any damage in these areas will not allow the key to stay connected to the plastic bracket which sits underneath the key

Step 4 — Remove Key from old Palmrest



- While using tweezers, remove just the actually key (top layer only) . You want to try and remove the key without also removing the plastic bracket that sits right underneath the key.
- Try to slightly pick at the corner of the key. This helps remove the key separately from the plastic bracket.

Step 5 — Remove Plastic Bracket



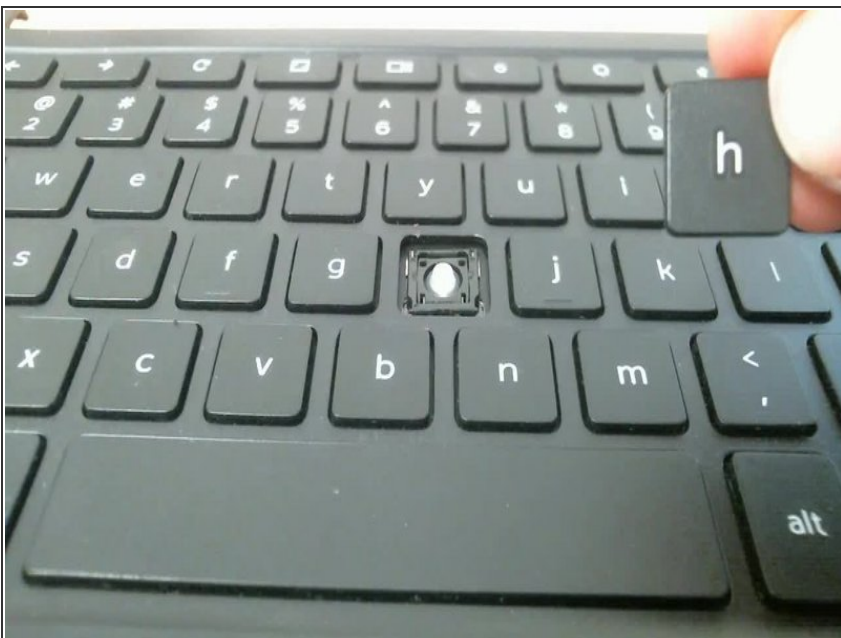
- With tweezers, carefully start picking near the four corners where the 4 metal clips are securing the plastic bracket.

Step 6 — Replace Plastic Bracket



- Line up the 2 outer corners and the bottom inner corners of the plastic bracket with the 4 metal clips connected to the palmrest.

Step 7 — Replace Key



- Place the key on top of the plastic bracket and press down. If the plastic bracket is on correctly and

securely, the key should easily snap into place.

- Check if the key is secure by tapping around all sides of the key. This is a good test to make sure the metal clips are properly securing the plastic bracket and making sure that the plastic bracket can hold the key correctly.
-

To reassemble your device, follow these instructions in reverse order.