



Dell Chromebook 11 CB1C13 Screen Cover Replacement

This guide will show you how to replace the screen cover.

Written By: Jerry Geffrard



INTRODUCTION

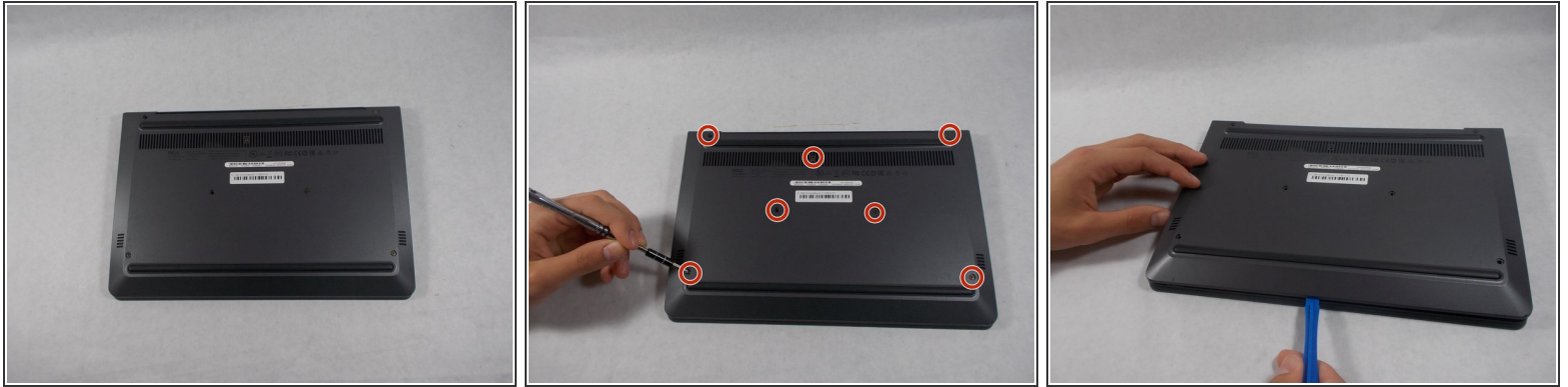
Scratches or cracks in the screen cover are very common with portable devices. While minor damage can be ignored, anything major will require a replacement since it may harm the rest of the device, and possibly the user.



TOOLS:

- [iFixit Opening Tools](#) (1)
 - [Phillips #0 Screwdriver](#) (1)
-

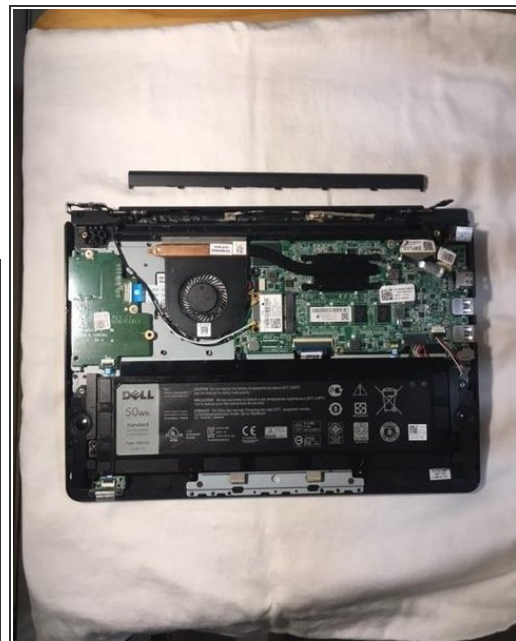
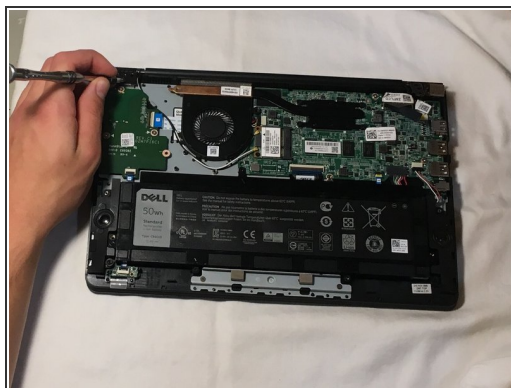
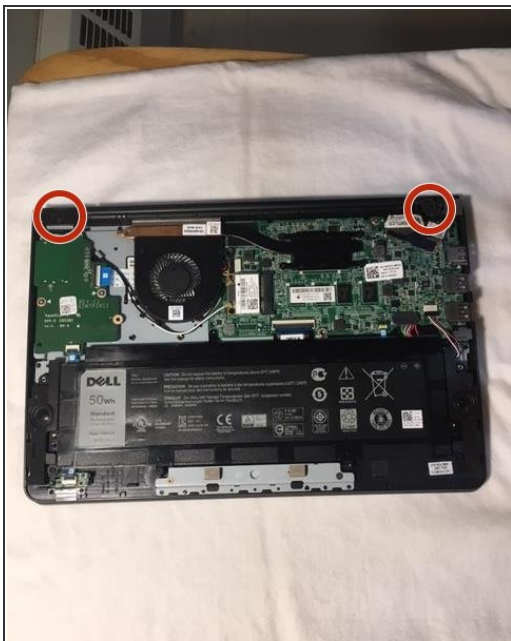
Step 1 — Back Panel



 Make sure that device is fully powered down before attempting to open the back case.

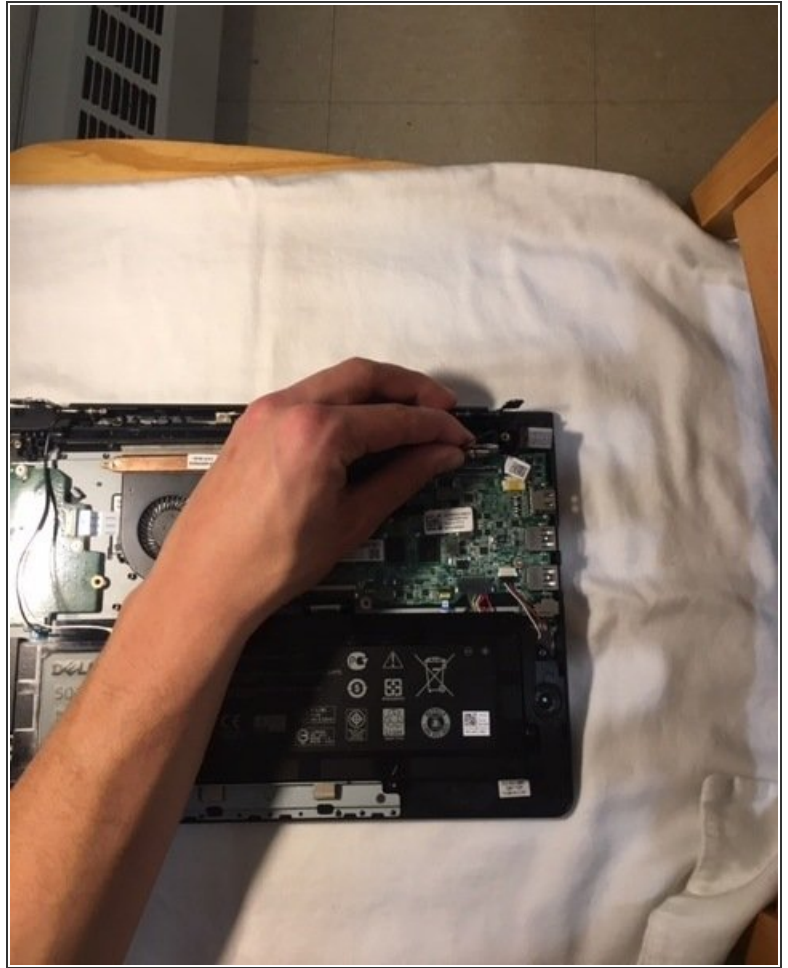
- Remove all seven 8 mm Philips #0 screws from the back case with a Philips #0 screwdriver.
- Once all seven screws are removed, you can pry the case off using your fingers or a plastic opening tool.

Step 2 — Screen Cover



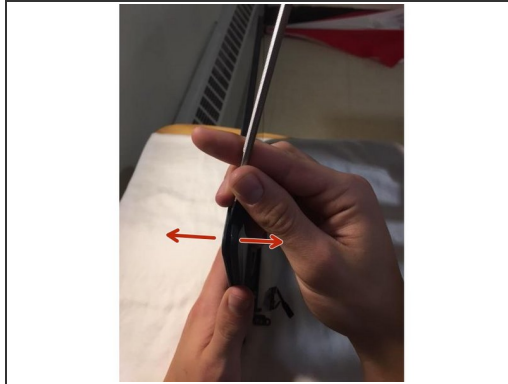
- Locate the two hinges on the corners of the device.
 - Unscrew the 5 2mm Phillips #00 screws in the hinges.
 - Pull the hinges up and slide bottom cover out
- ⚠ Gently remove the cover since it is still connected to the device by some wires

Step 3



- Locate the two cables that connect the top panel to the device. One black, and one white.
- Remove these two cables by grabbing the golden ends with your fingers, and gently pulling straight up.
- Remove pin port lifting up the hinge.

Step 4



- Locate the seam between the screen cover, and the top panel
 - Starting at one of the hinge corners, take a thin metal prying tool and gently insert it into the seam.
 - Gently push the tool down towards the top panel until you feel the screen cover disconnect.
 - Repeat this process all around the screen cover until it is completely disconnected from the top panel.
- i** During this process, you might hear a rough snapping sound. This is normal, and is just the sound of the screen cover's connections to the top panel coming apart.
- !** Make sure to be gentle with your prying, and to move in small increments around the screen cover during this process. This is to prevent any cracks or damage to the cover, which could be harmful.

To reassemble your device, follow these instructions in reverse order.