



Dell Chromebook 11 CB1C13 Special Key Replacement

Replace "special keys" which are keys that include a stabilizer (bar) underneath the key such as Tab, Search, Shift, Ctrl, Alt, Spacebar, Backspace, Enter

Written By: Jon





TOOLS:

- [Tweezers](#) (1)



PARTS:

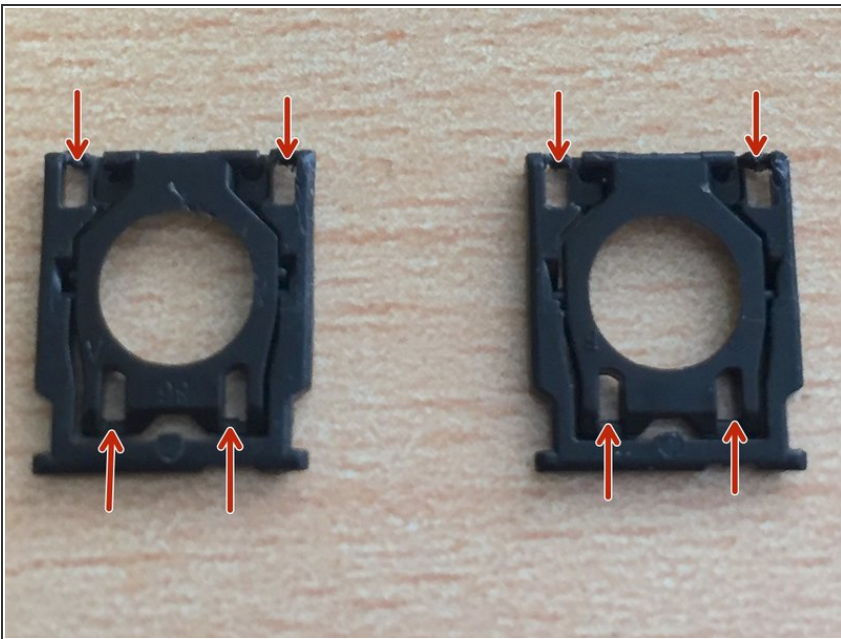
- [Dell Chromebook Palmrest WR67C \(replacement keys\)](#) (1)

Step 1 — Check Metal Clips & Rubber Spring/Membrane for Damage



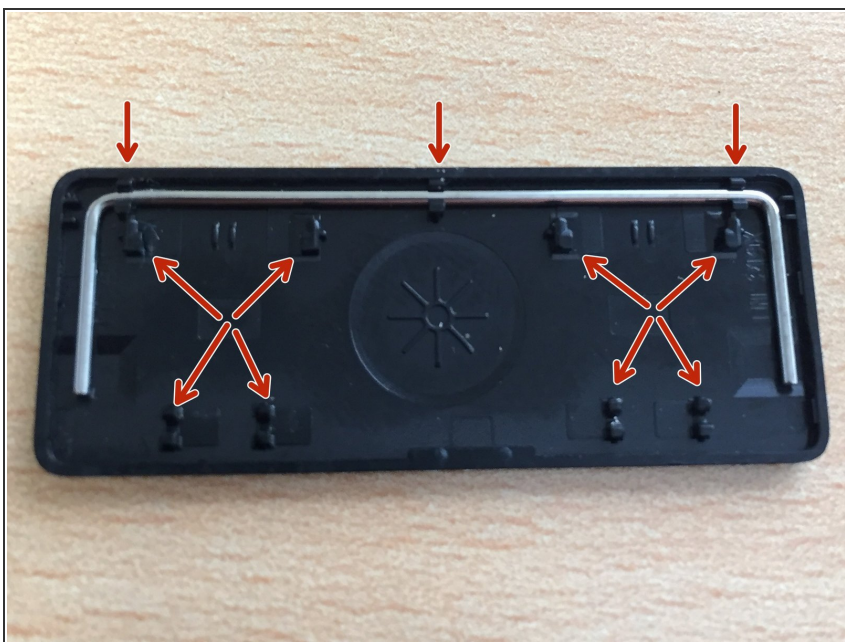
- Unlike letter and number keys, some "special keys" have 2 sets of metal clips. Plus, a stabilizer holder on both sides.
- If you notice that one of the metal clips or stabilizer holders is bent, carefully use your tweezers to bend back into an upright position.

Step 2 — Check Plastic Brackets



- Check the plastic brackets for damage in these areas.

Step 3 — Check Key for damage



- Check the 8 main points of the key on the inside of the key for damage.
- Check to make sure the stabilizer (bar) is present and the 3 clips that secure it to the key are not damaged.
- Any damage in these areas will not allow the key to stay connected to the plastic bracket which sits underneath the key.

Step 4 — Remove Key from old Palmrest



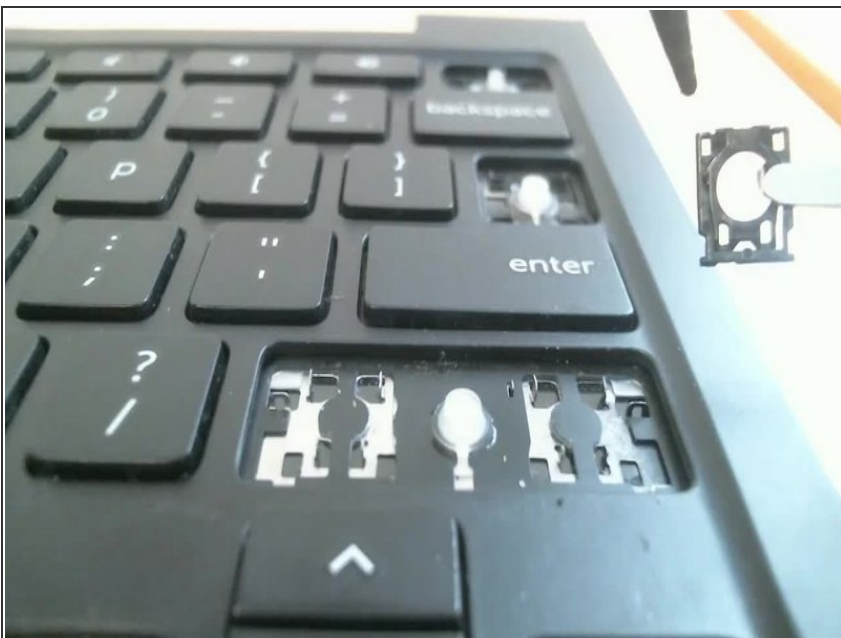
- While using tweezers, remove just the actually key (top layer only) . You want to try and remove the key without also removing the plastic bracket that sits right underneath the key.
- Try to slightly pick at the corner of the key. This helps remove the key separately from the plastic bracket.
- Don't forget that these "special keys" have a stabilizer (bar) underneath the key.

Step 5 — Remove Plastic Brackets from old Palmrest



- With tweezers, carefully start picking near the four corners where the 4 metal clips are securing the plastic bracket. Remember these special keys have 2 plastic brackets to remove.

Step 6 — Replace Plastic Brackets on Chromebook



- Line up the 2 outer corners and the bottom inner corners of the plastic bracket with the 4 metal clips connected to the palmrest.
- Repeat this step as there are 2 plastic brackets for both shift keys, spacebar, and Alt key (left of spacebar).

Step 7 — Replace Key on Chromebook



- First line up the stabilizer ends with the stabilizer holders and slide each end through the stabilizer holders connected to the palmrest.
- Place the key on top of the plastic bracket and press down. If both plastic brackets are on correctly and securely, the key should easily snap into place.
- Check if the key is secure by tapping around all sides of the key. This is a good test to make sure the metal clips are properly securing the plastic bracket, the stabilizer, and making sure that the plastic bracket can hold the key correctly.

To reassemble your device, follow these instructions in reverse order.