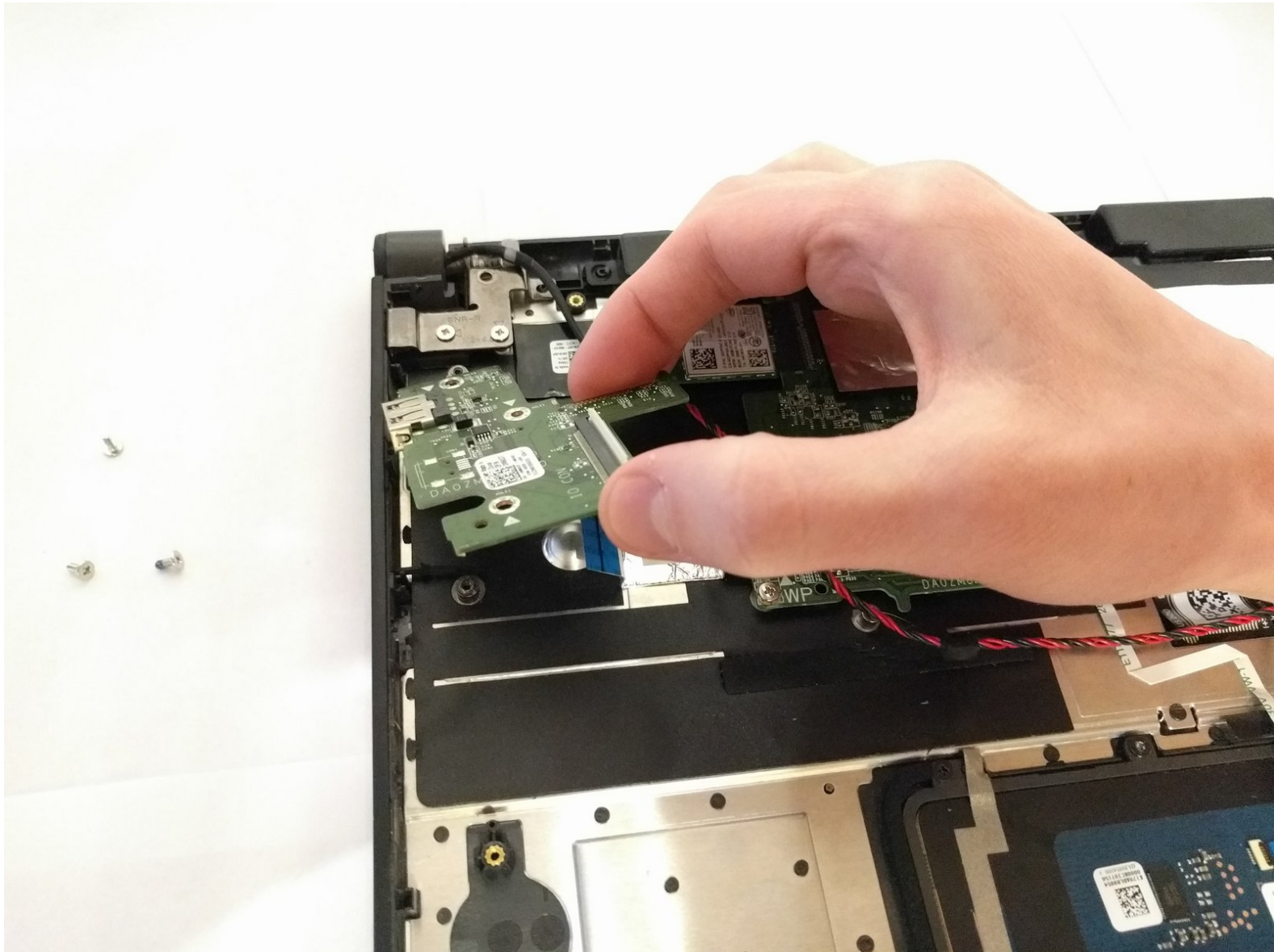




Dell Chromebook 11-3120 Daughterboard Replacement

How to properly replace the daughterboard from the Dell Chromebook 11-3120.

Written By: Mitchell Stevens



INTRODUCTION

The USB port allows for small amounts of data to be transferred from computer to computer via a USB drive. Sometimes these drives do not connect properly due to a broken motherboard. Here is a guide on how to properly replace the motherboard.

TOOLS:

- [JIS #0 Screwdriver](#) (1)
- [Metal Spudger](#) (1)
- [iFixit Opening Tools](#) (1)

PARTS:

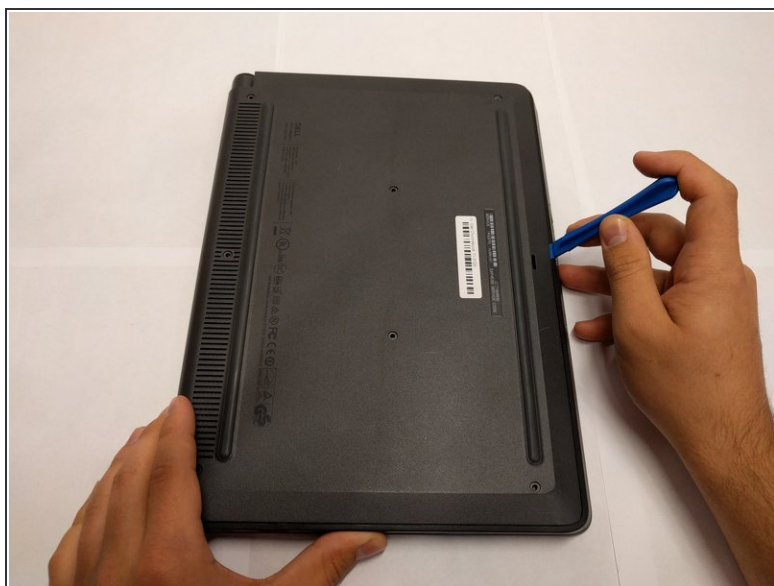
- [Dell Chromebook 11 3120 USB Daughterboard](#) (1)
-

Step 1 — Back Panel



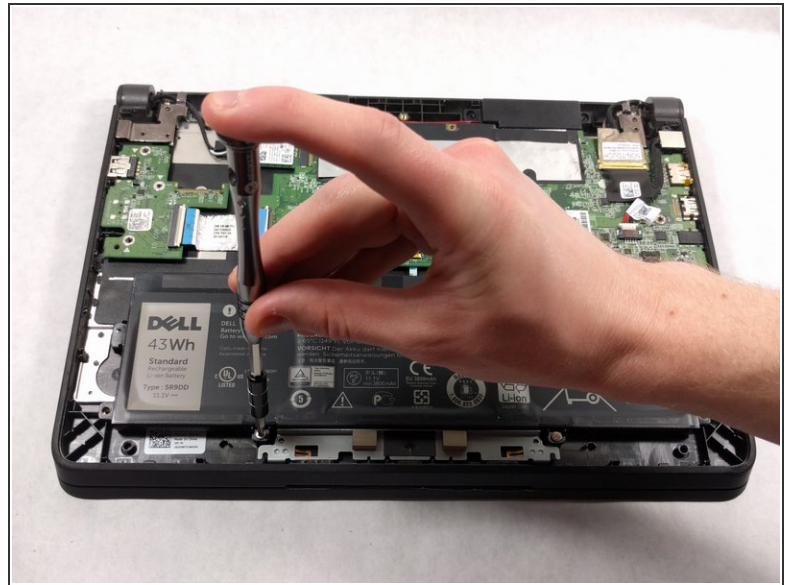
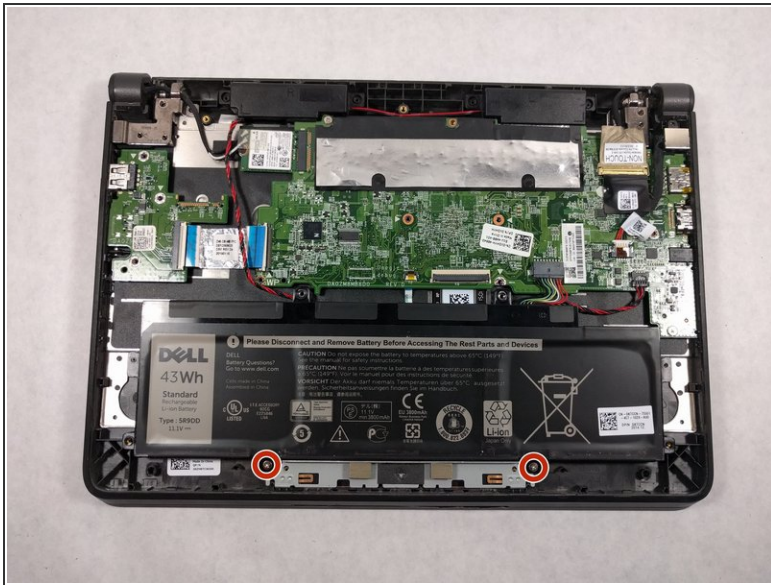
- Use the #J0 screwdriver to unscrew the seven 4mm screws located around the back panel.

Step 2



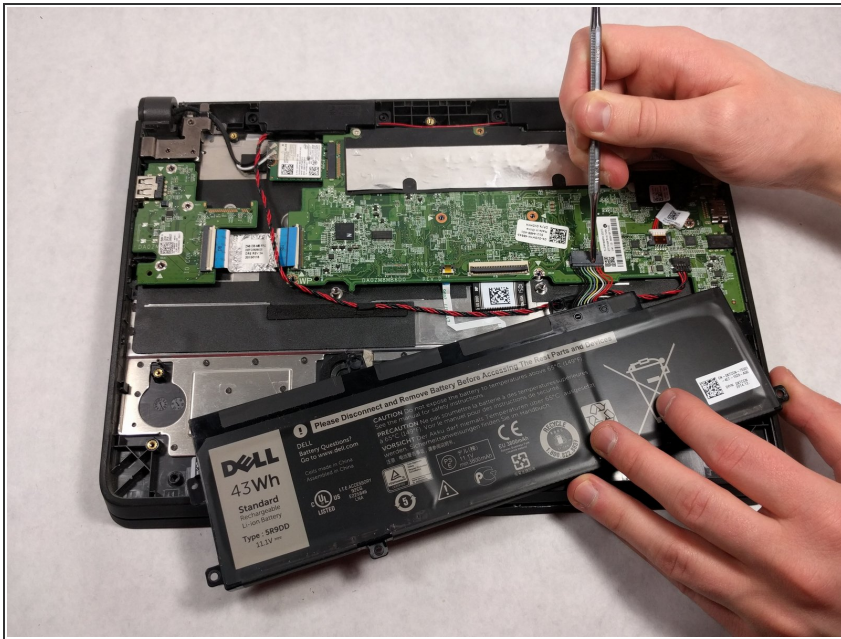
- Use the plastic opening tool to gently pry around the four sides of the back panel until the panel is fully released.
- ⓘ Taking the back cover off of the computer may require more force than expected. When using the opening tool, be careful not to use too much force on it, and make sure all the screws are removed.

Step 3 — Battery



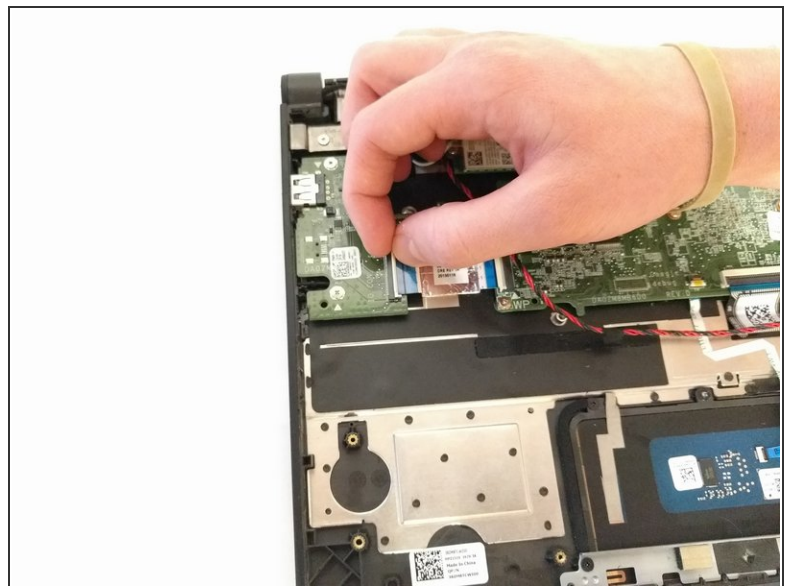
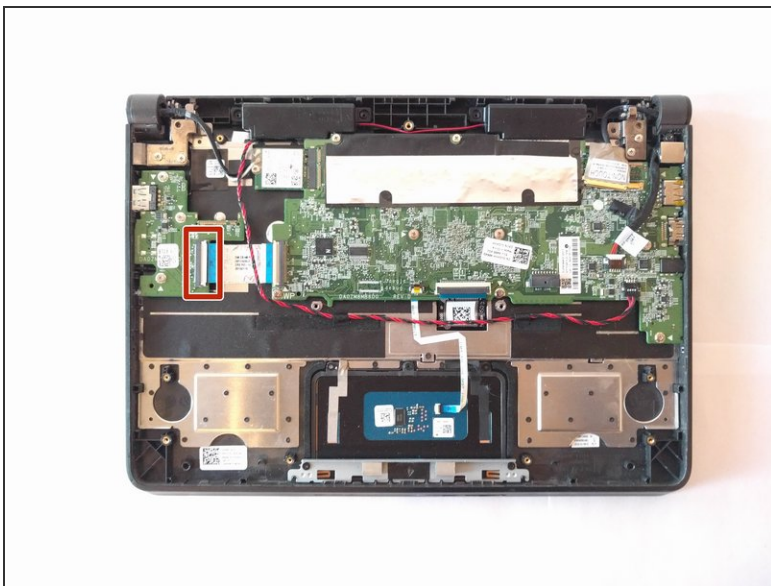
- Using a JIS #0 screwdriver, unscrew the two 4mm screws securing the battery in place.

Step 4



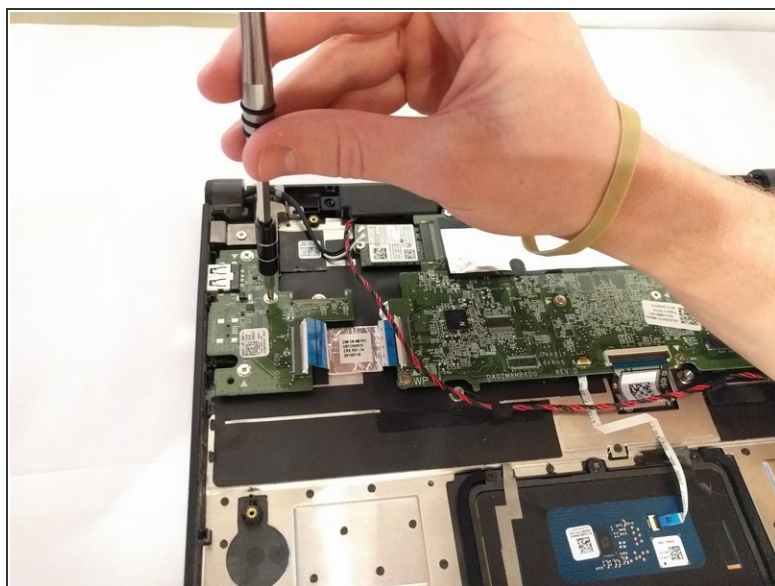
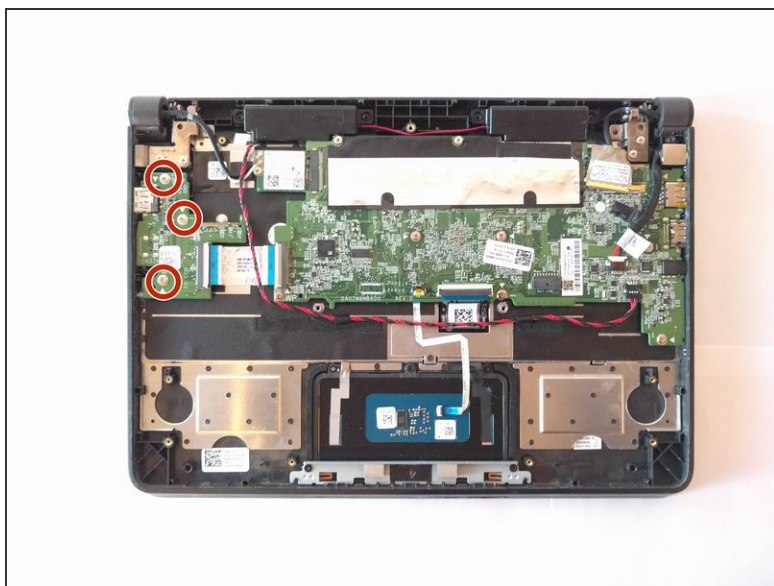
- Using the pointed end of a #2 spudger, remove the connection between the battery and motherboard by slightly pulling on the wires while pushing the tiny hole down using the spudger.
- Pull out the battery from inside the laptop.

Step 5 — Daughterboard



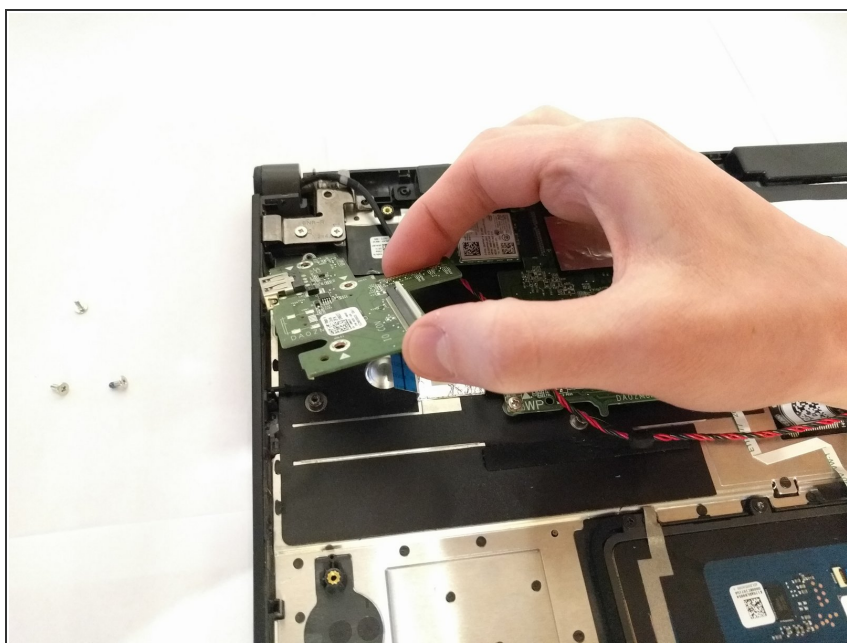
- Disconnect the bridge connection ribbon cable from the motherboard.

Step 6



- Using a JIS #0 screwdriver, unscrew the three 4mm screws securing the daughterboard in place.

Step 7



- Carefully lift out the daughterboard with the right-hand USB port from the laptop.

To reassemble your device, follow these instructions in reverse order.