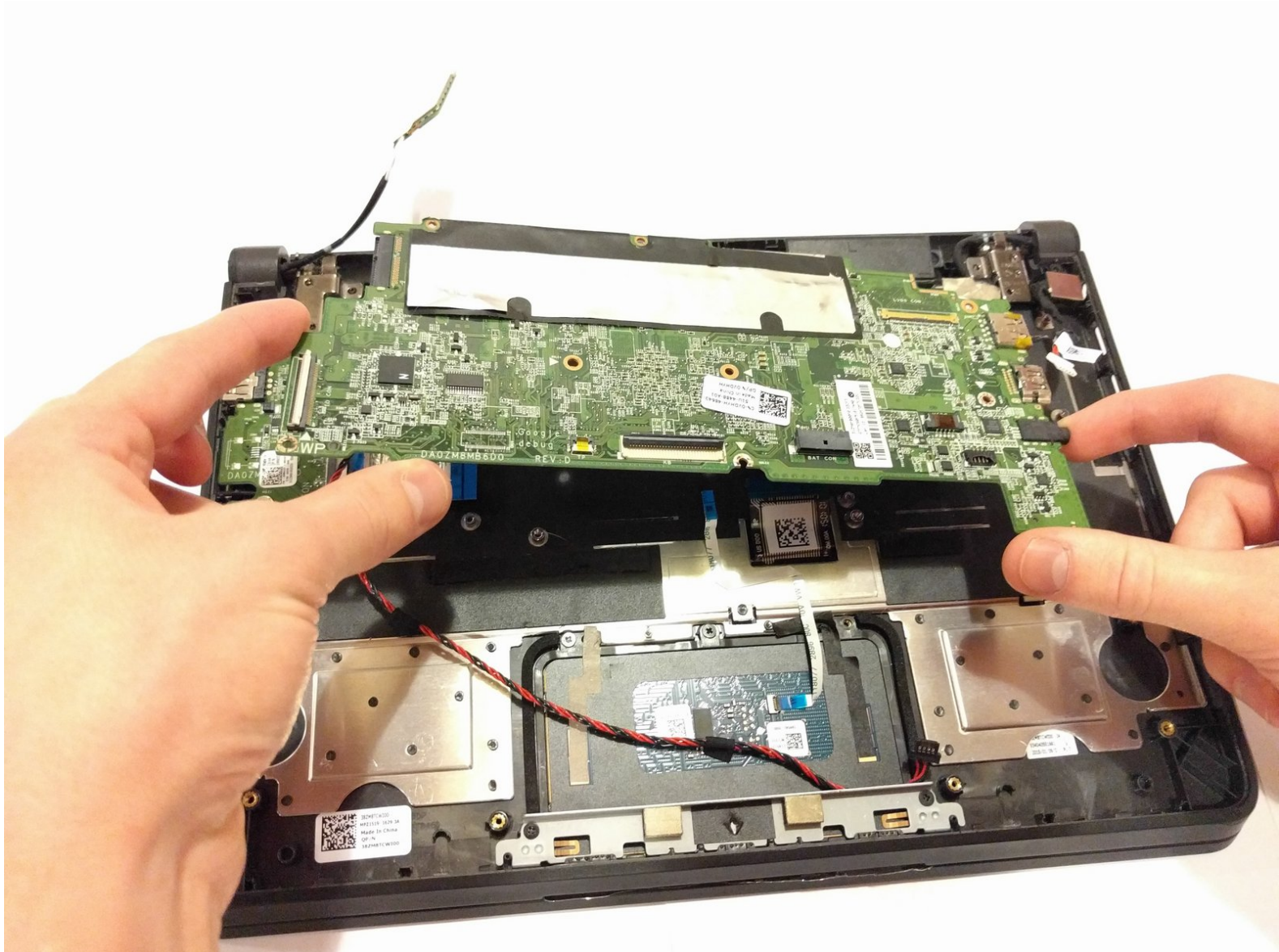




Dell Chromebook 11-3120 Motherboard Replacement

This guide will show you how to replace the motherboard in a Dell Chromebook 11-3120.

Written By: Joseph Pumphrey



INTRODUCTION

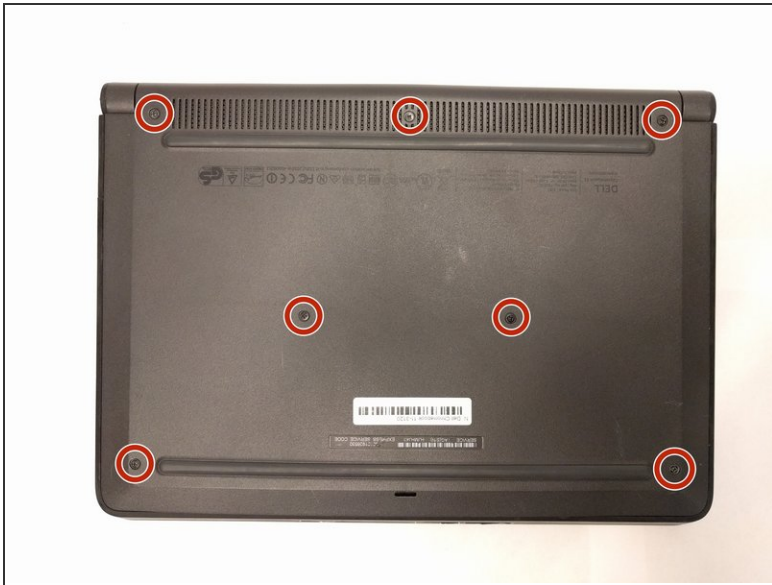
The motherboard makes connections to all of the different components of the laptop, allowing for power and data to be transmitted and distributed throughout all of the remaining hardware. In this guide, you will be shown how to remove this portion of your laptop so that the motherboard can be replaced.



TOOLS:

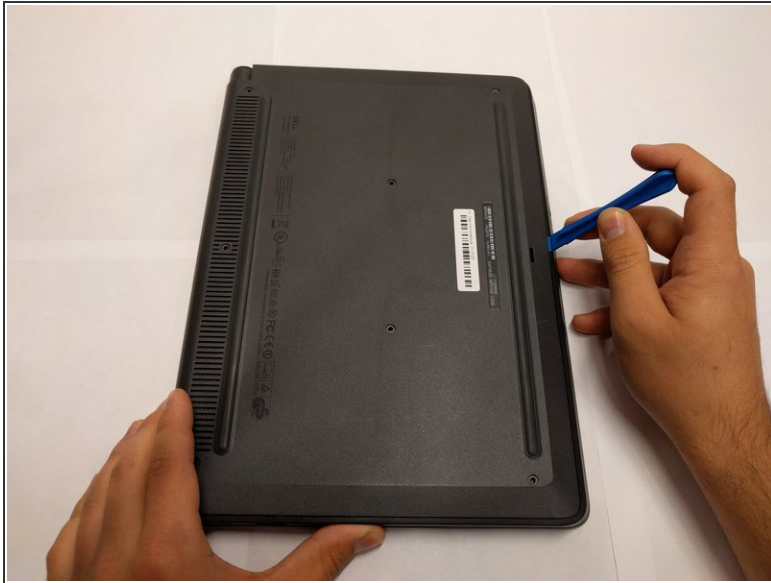
- [JIS #0 Screwdriver](#) (1)
 - [Metal Spudger](#) (1)
 - [iFixit Opening Tools](#) (1)
-

Step 1 — Back Panel



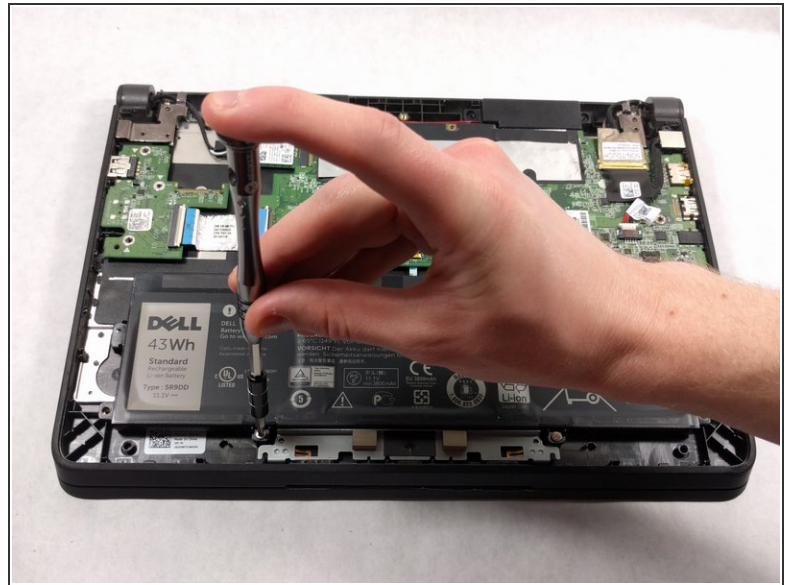
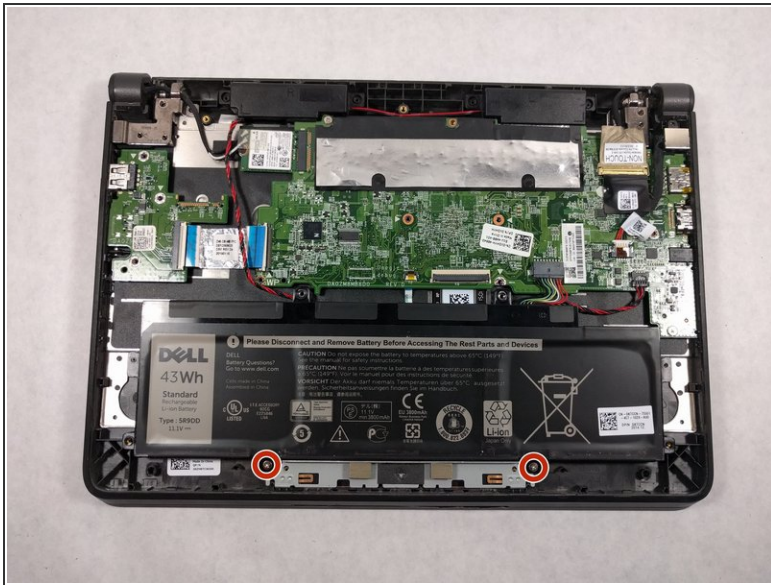
- Use the #J0 screwdriver to unscrew the seven 4mm screws located around the back panel.

Step 2



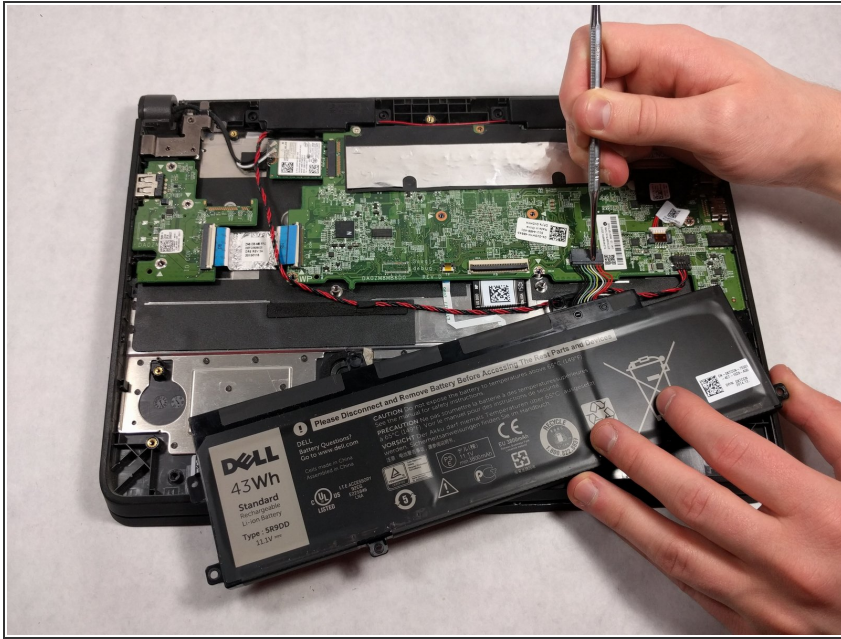
- Use the plastic opening tool to gently pry around the four sides of the back panel until the panel is fully released.
- ⓘ Taking the back cover off of the computer may require more force than expected. When using the opening tool, be careful not to use too much force on it, and make sure all the screws are removed.

Step 3 — Battery



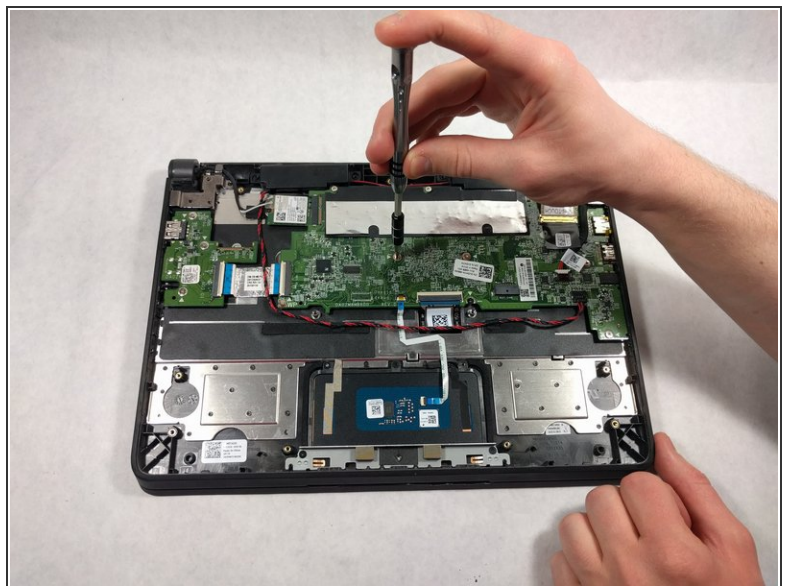
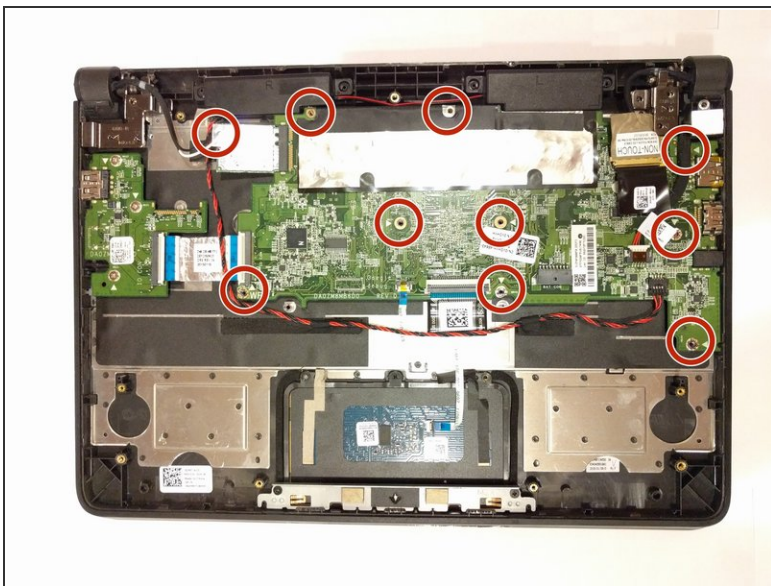
- Using a JIS #0 screwdriver, unscrew the two 4mm screws securing the battery in place.

Step 4



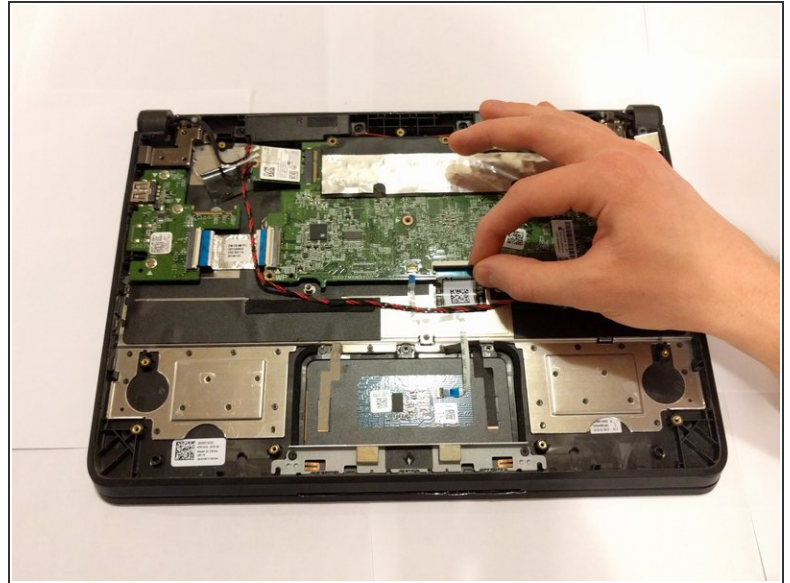
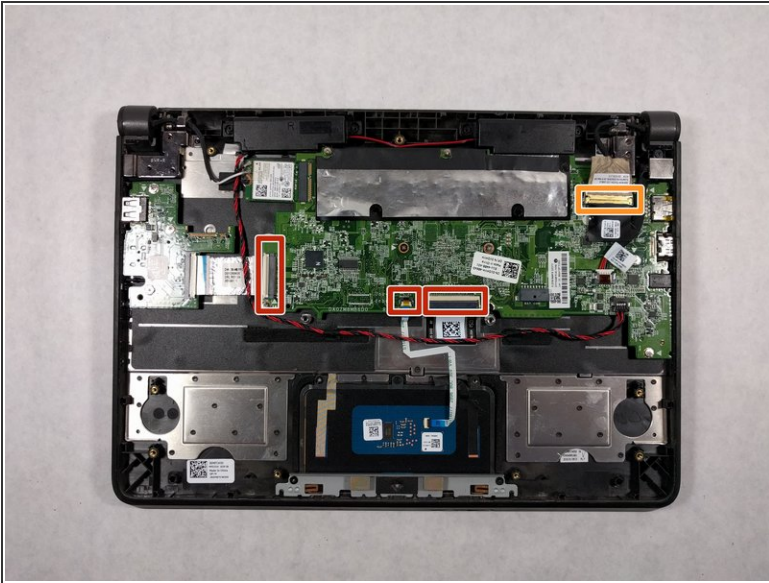
- Using the pointed end of a #2 spudger, remove the connection between the battery and motherboard by slightly pulling on the wires while pushing the tiny hole down using the spudger.
- Pull out the battery from inside the laptop.

Step 5 — Motherboard



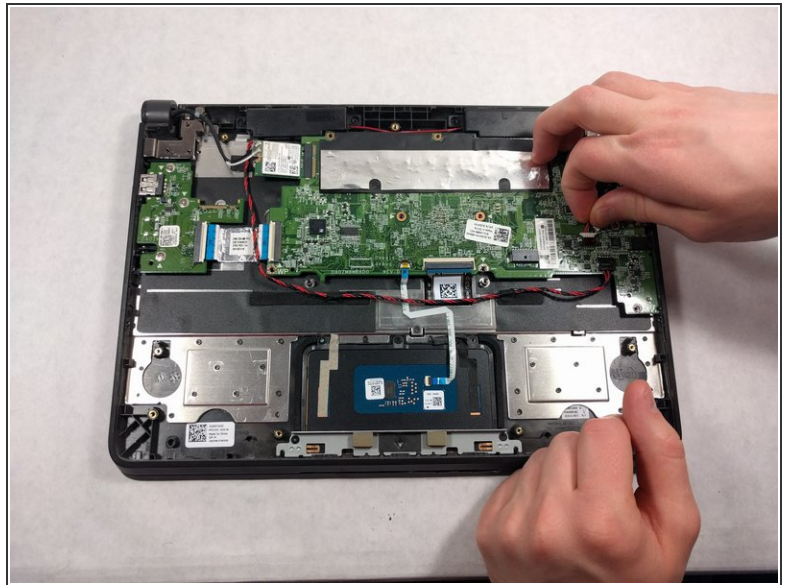
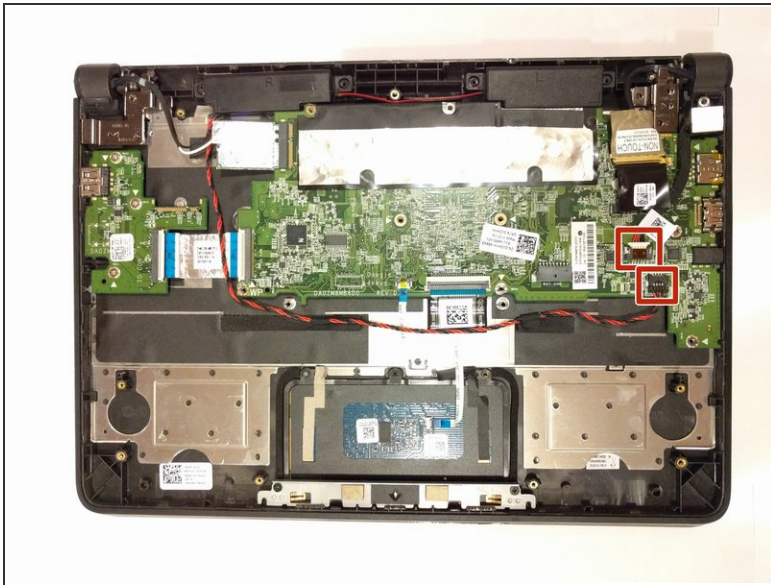
- Using a JIS #0 screwdriver, unscrew the ten 4mm screws securing the motherboard in place.

Step 6



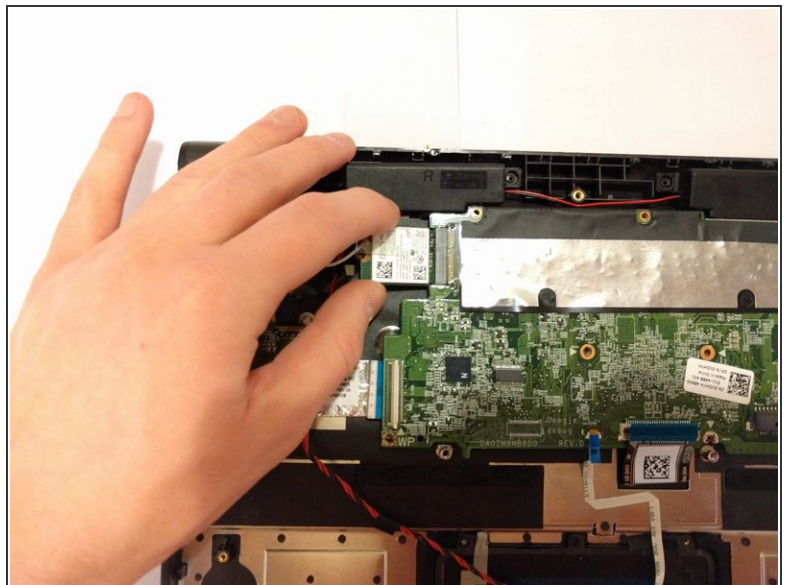
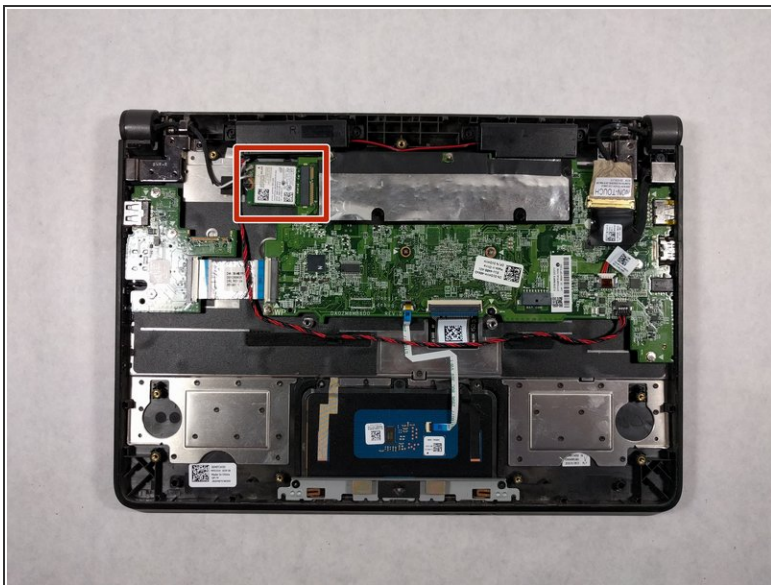
- Gently remove the 3 ribbon cables that connect to the motherboard from other components. Lift the tiny switch from the direction of the wire insertion keeping the ribbon in place and pull the transparent strip attached to the ribbon.
- Gently remove the display ribbon cable that says "NON-TOUCH" on its tag. This ribbon cable does not have a locking switch, but there is a wire metal latch that should be lifted up before pulling the ribbon.
- ⚠ Use caution when removing ribbon cables as they may tear if too much force is used.
- ⚠ Please mind that if the ribbon cable port has a locking switch, you must unlock this prior to pulling out the cable. Failure to do so can damage the port and make it difficult to remain inserted.

Step 7



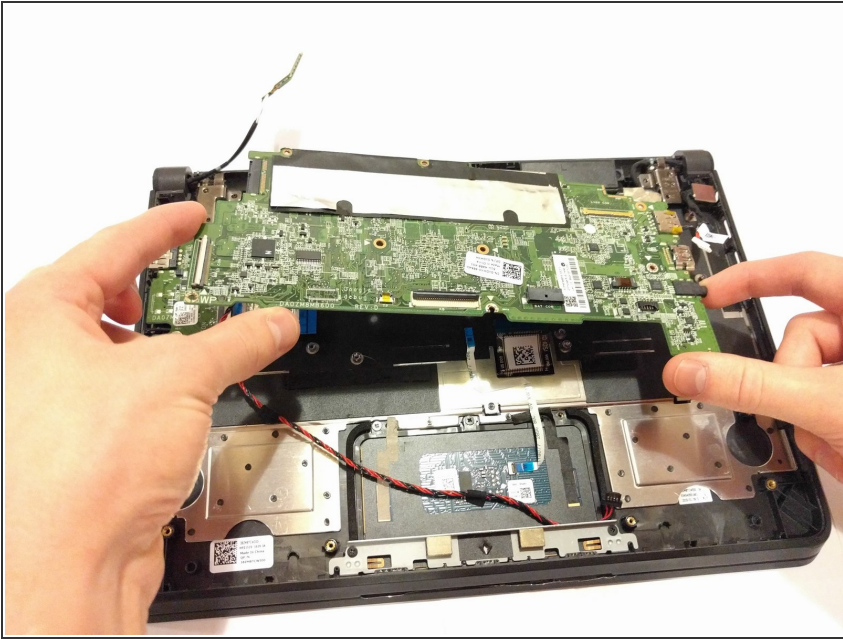
- Remove the two 4-pin connectors that are also connected from other components in the device. Gently tug on the connector and it will come loose.

Step 8



- Disconnect the small chip that connects to the motherboard by gently tugging on it in the direction away from the board.

Step 9



- Hold the sides of the motherboard and gently lift it upwards from its position.
- ⚠ Be careful not to tug on any cables that may snag onto the board as you lift. Keep clear before lifting.

To reassemble your device, follow these instructions in reverse order.