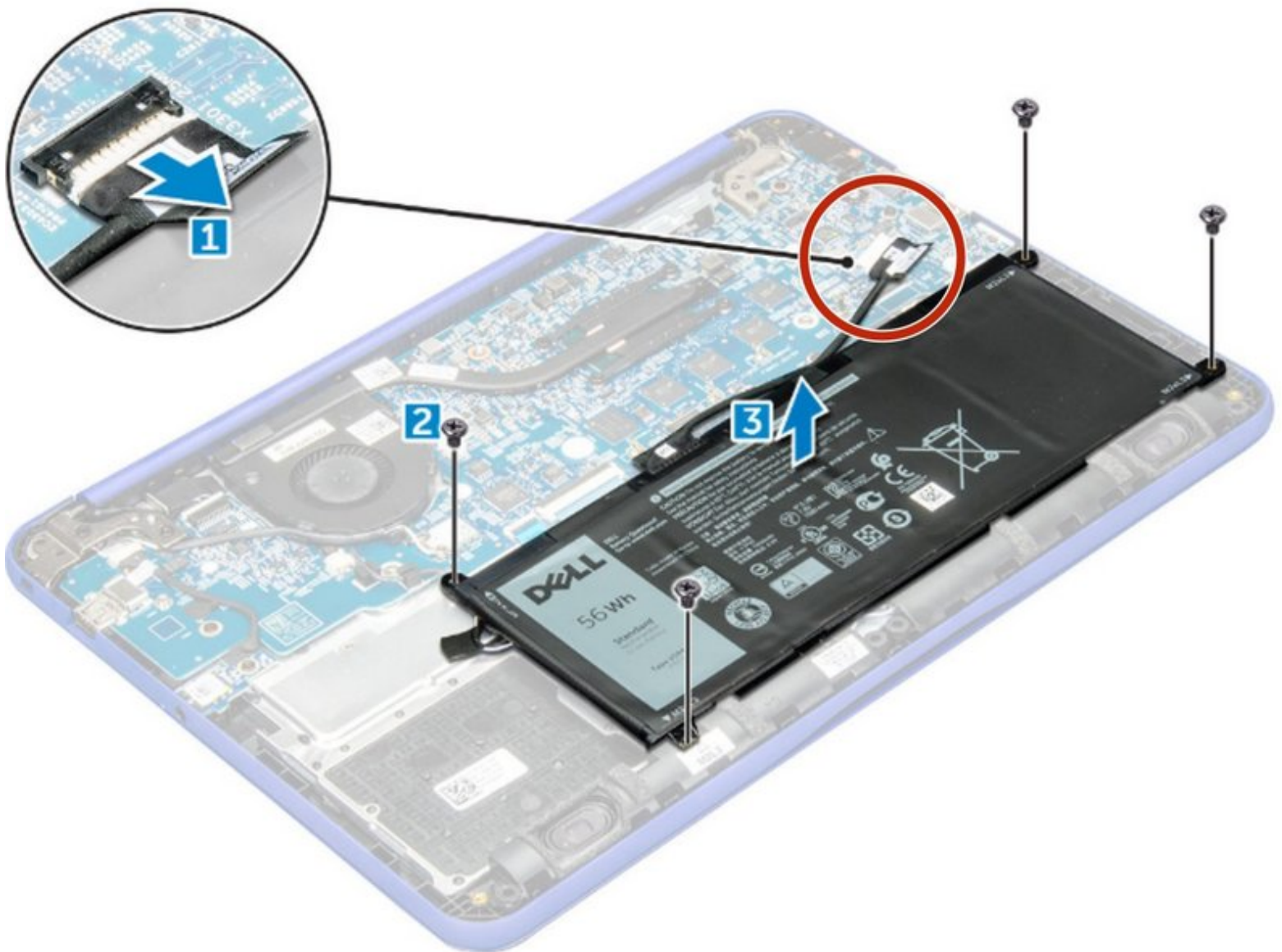




Dell Chromebook 13 3380 Battery Replacement

Written By: Terrence15



INTRODUCTION

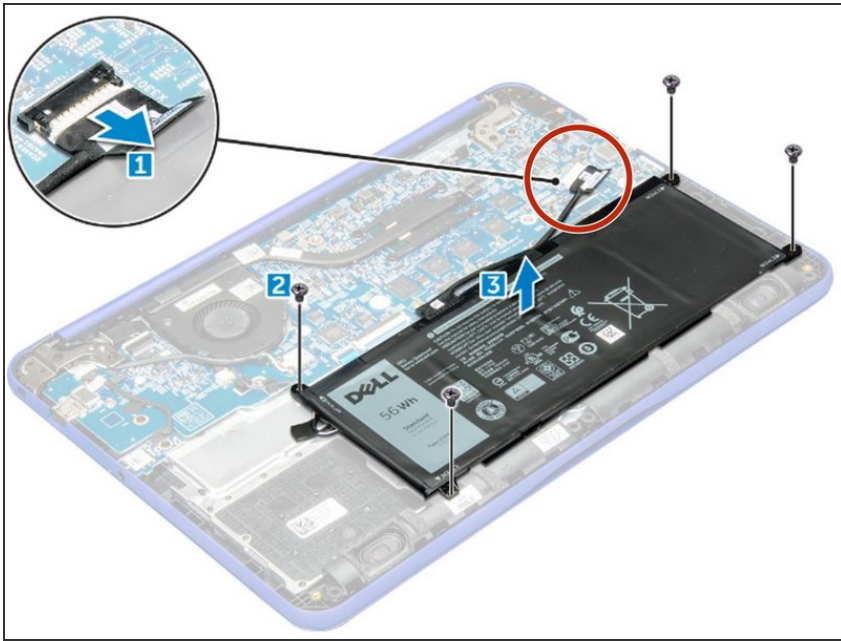
In this guide, we will show you how to remove and replace the Battery.



TOOLS:

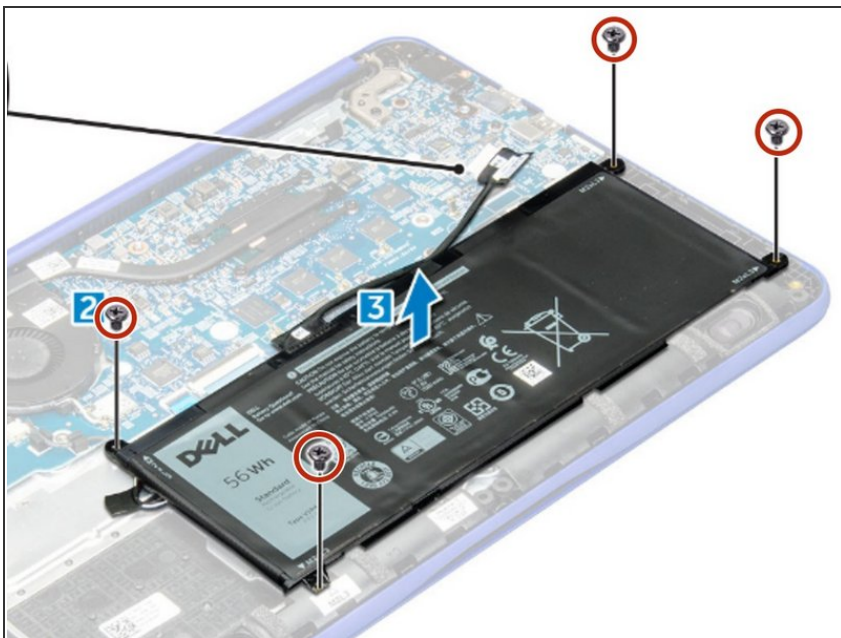
- [Phillips #0 Screwdriver](#) (1)
-

Step 1 — Disconnecting the Battery Cable



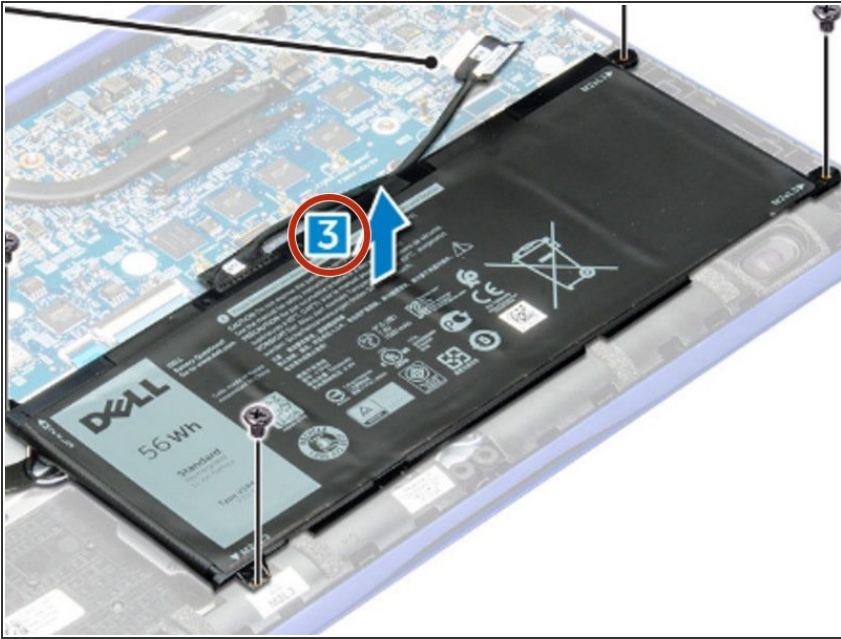
- ❗ Follow the procedure in [Before working inside your computer.](#)
- Disconnect the battery cable from the connector on the system board.

Step 2 — Remove the Screws



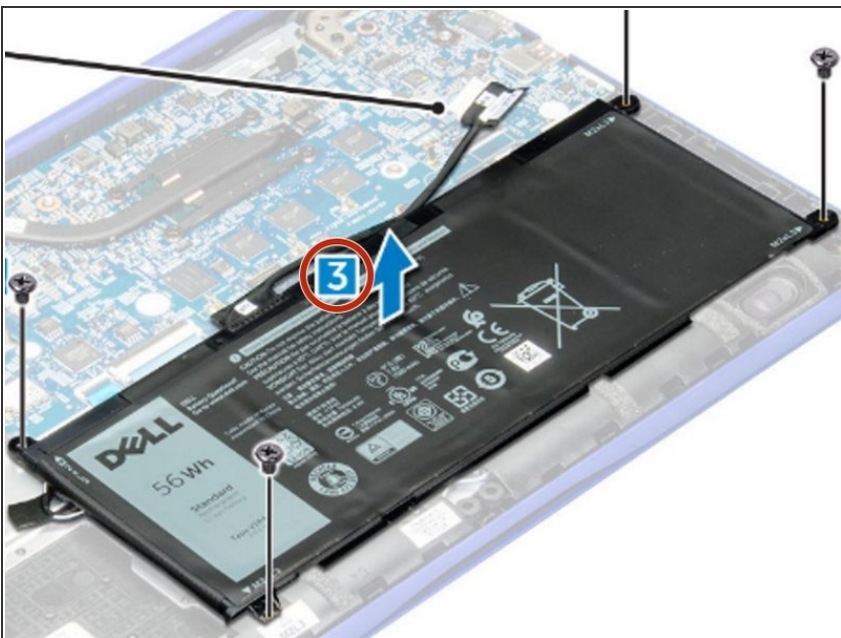
- Remove the M2.0x3.0 screws that secure the battery to the computer.

Step 3 — Lifting the Battery



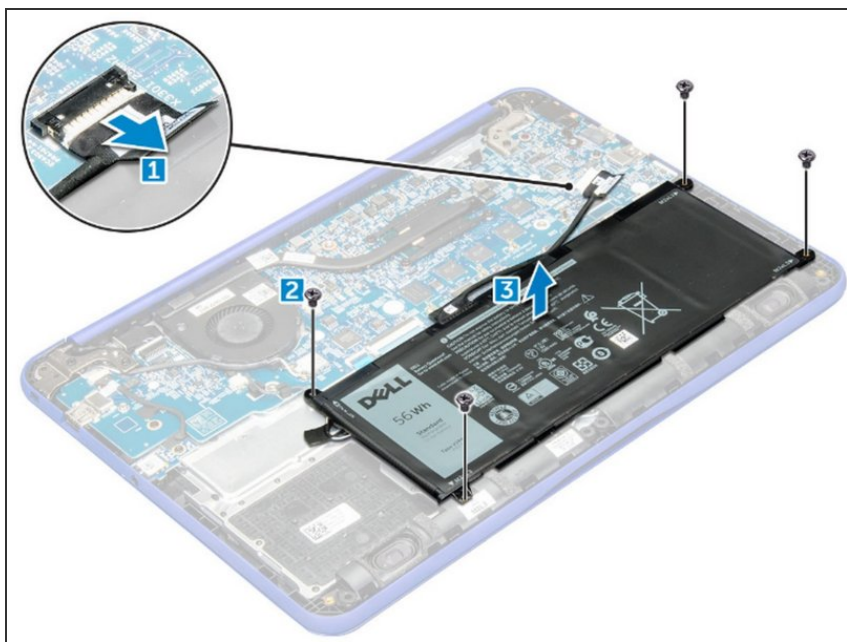
- Lift the battery away from the computer.

Step 4 — Inserting the Battery



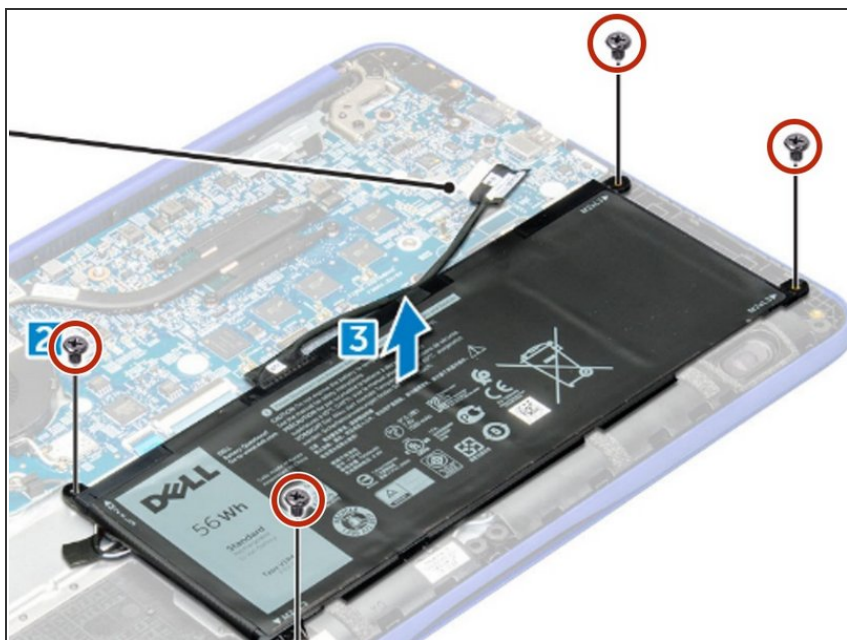
- Insert the **NEW** battery into the slot on the computer.

Step 5 — Connecting the Battery Cable



- Connect the battery cable to the connector on the battery.

Step 6 — Tighten the Screws



- Tighten the M2.0xL3 screws to secure the battery to the computer.

To reassemble your device, follow these instructions in reverse order.