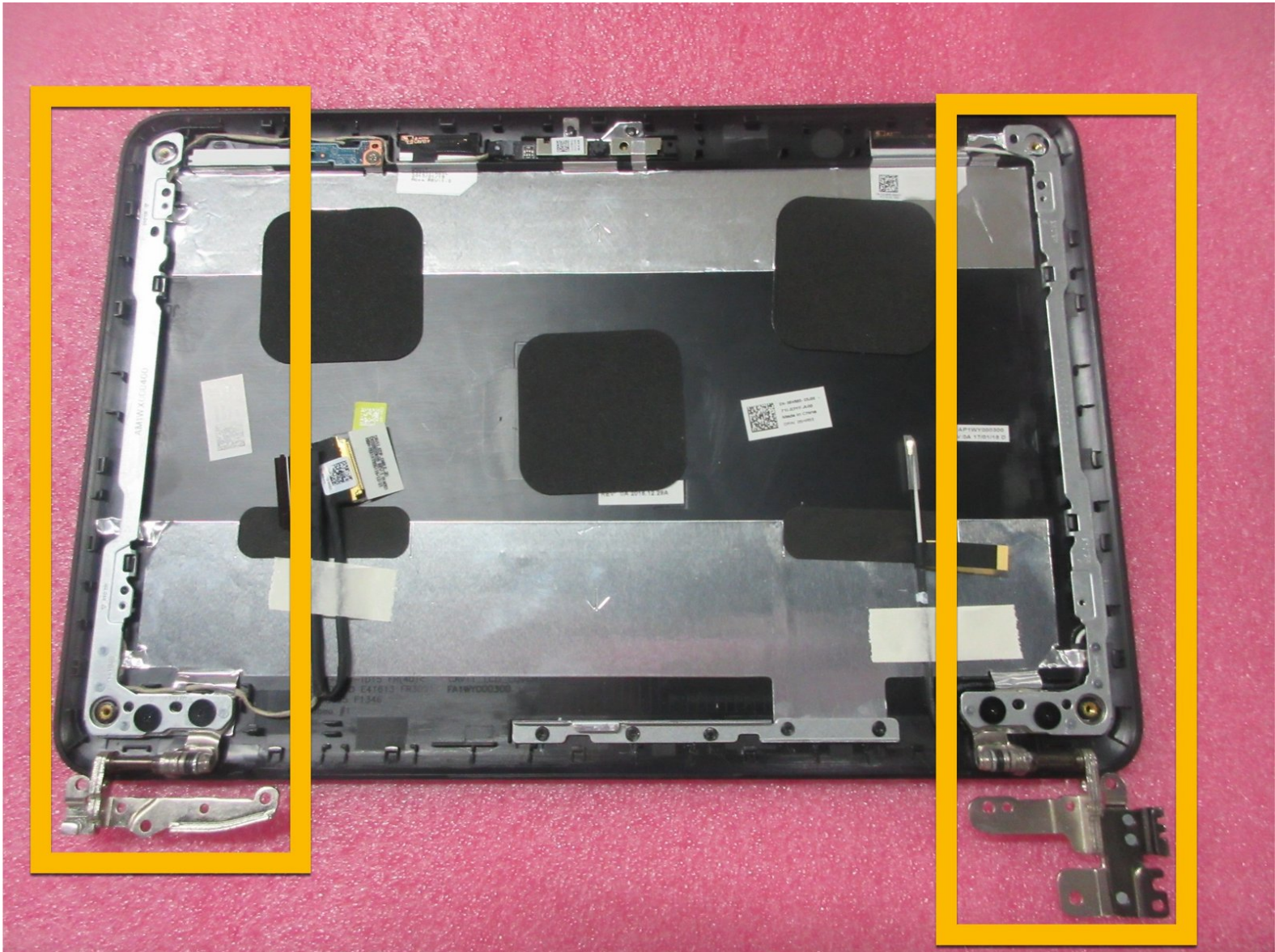




Dell Chromebook 3180 LCD Hinges Replacement

This guide shows how to replace the LCD hinges of a Dell Chromebook 3180.

Written By: Jon



INTRODUCTION

This guide shows how to replace the LCD hinges of a Dell Chromebook 3180.



TOOLS:

- [Phillips #0 Screwdriver](#) (1)
 - [Plastic blade](#) (1)
 - [Phillips #00 Screwdriver](#) (1)
 - [Metal Spudger \(optional\)](#) (1)
-

Step 1 — Remove LCD Bezel & Hinge Caps



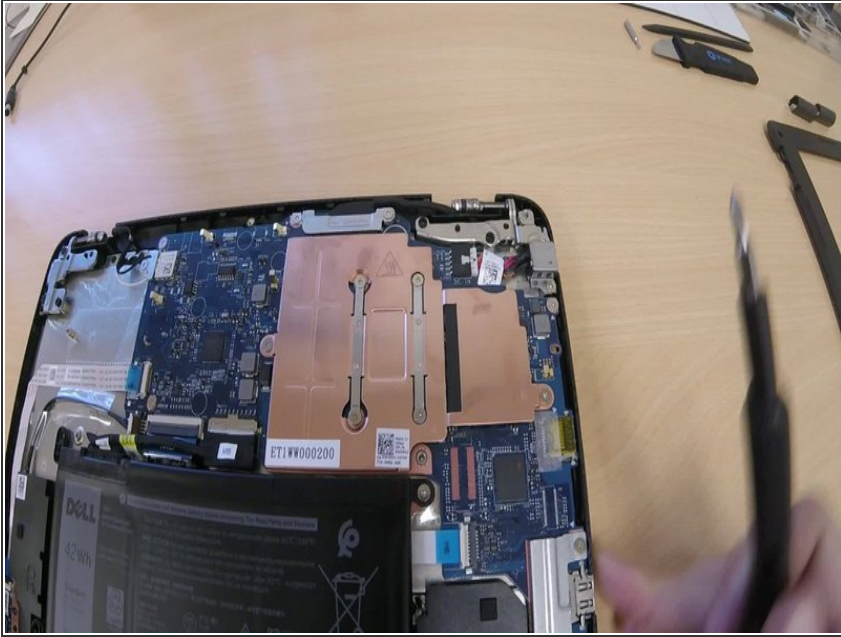
- Open the chromebook until its completely flat on the table
- Remove both the left and right hinge caps
- Remove a total of 4 screws. One in each corner.

Step 2 — Remove Bottom Cover / Shell



- Remove the 7 screws from the back cover with a Phillips #0 screwdriver
- Once all 7 screws have been removed, you can start to pry apart the back cover with your Plastic Blade or your fingers. Then you can start to separate the back cover from the main chromebook. (See pic)

Step 3 — Remove Left & Right Hinge Screws



- Using your phillips #0 screwdriver, remove the the 2 screws from the right metal hinge and the 3 screws from the left metal hinge.

Step 4 — Prepare to Remove LCD & Hinge Screws



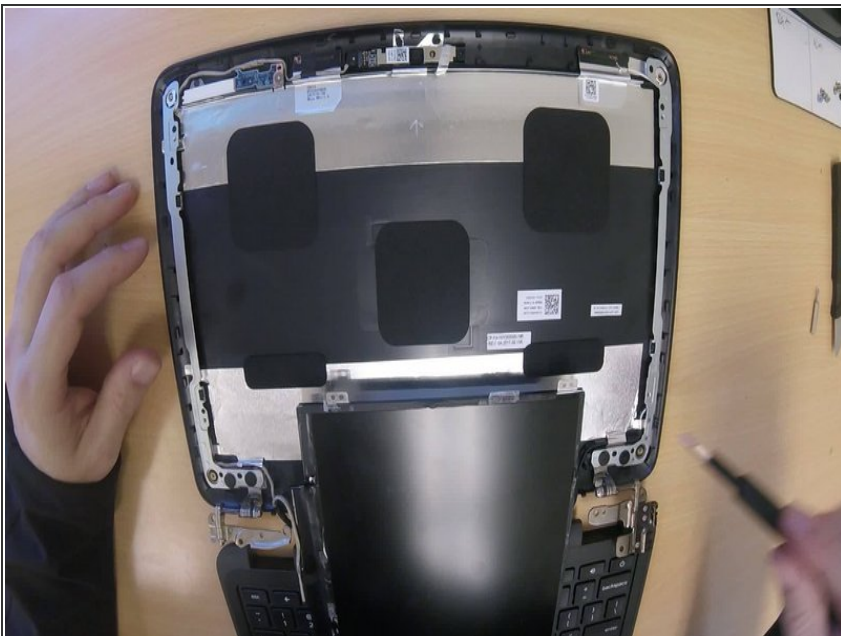
- You do not need to disconnect the LCD connector from the Motherboard to save time
- You do not need to disconnect the WiFi power cables from the WiFi Card. This will also save some time.
- Open the chromebook flat on the desk while being careful that the LCD and WiFi cables do not get caught up on the left and right hinges. See video.

Step 5 — Remove LCD Screws



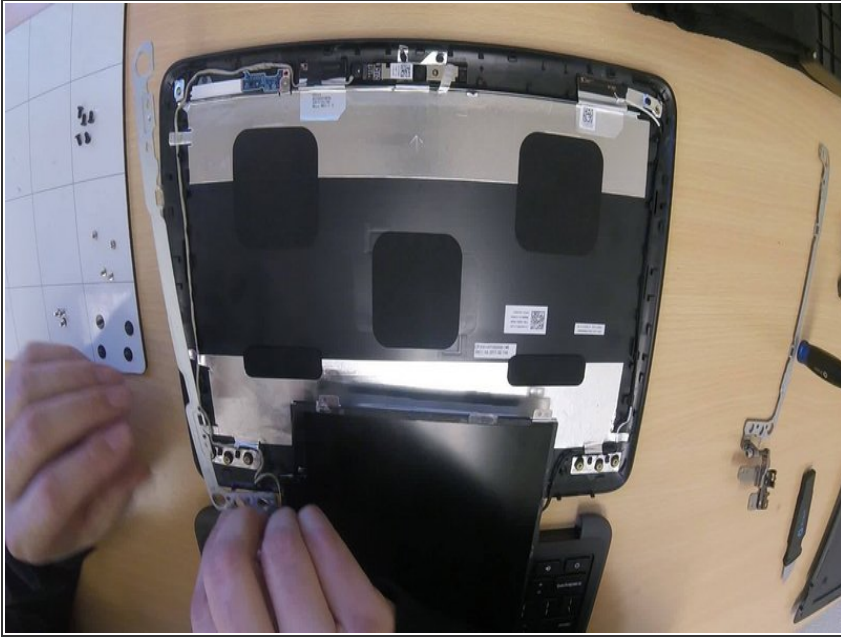
- Using your Phillips #0 , remove the 4 LCD screws located in each corner.
- Lift the LCD carefully out of the tray
- You do not need to disconnect the LCD connector on the back of the LCD. This will save time. See video.

Step 6 — Remove Hinges



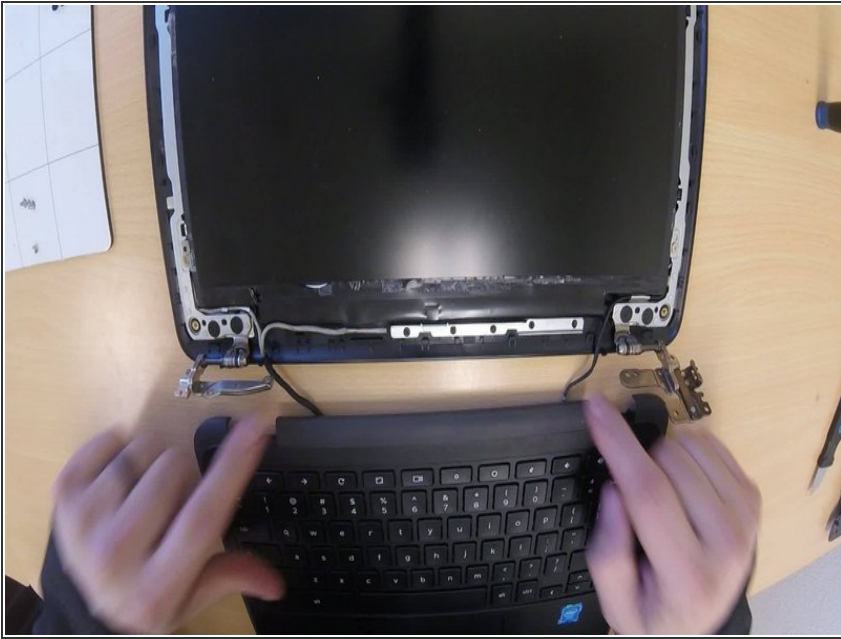
- Using Phillips #0, remove the 4 hinge screws, 2 on the left and 2 on the right.
- Remove the hinges from the LCD assembly. See Video.

Step 7 — Install new hinges



- The left hinge is labeled with an "L" within the inside corner. The left hinge is smaller and the hinge bracket is more of a horizontal shape
- The right hinge is labeled with an "R" within the inside corner . The right hinge is larger and the hinge bracket is more of a horizontal and vertical shape.
- When inserting each hinge, look for 2 black plastic clips attached to both sides of the LCD assembly. These 2 black plastic clips will fit into the hinge arms. Notice in the video I press down on each hinge clip where the black plastic clips are located.
- Using your phillips #0 or #00, replace the hinge screws on each side.

Step 8 — Prepare CB to Secure Hinges



- Close the chromebook while being carefully of the two cables so they do not get caught on the two metal hinges.
- Fold over the base of the chromebook onto the top of the LCD
- Make sure each hinge sits flush in each corner by making sure the LCD cable is routed properly to the LCD connector. Also, make sure the WiFi power cable is routed properly.

Step 9 — Replace Hinge Screws



- Replace a total of 5 hinge screws. Three on the left and 2 on the right.

Step 10 — Replace Back cover



- Using a Phillips #0, replace a total of 7 screws to the back of the chromebook.

Step 11 — Replace LCD Bezel and Hinge Caps



- Replace Bezel - See video
- Replace both left and right hinge caps

To reassemble your device, follow these instructions in reverse order.