



# Dell Chromebook 3180 Palmrest Replacement

Dell Chromebook 3180 Palmrest Replacement

Written By: Jon



# INTRODUCTION

This guide will you how to remove and replace the palmrest for a Dell Chromebook 3180.



## TOOLS:

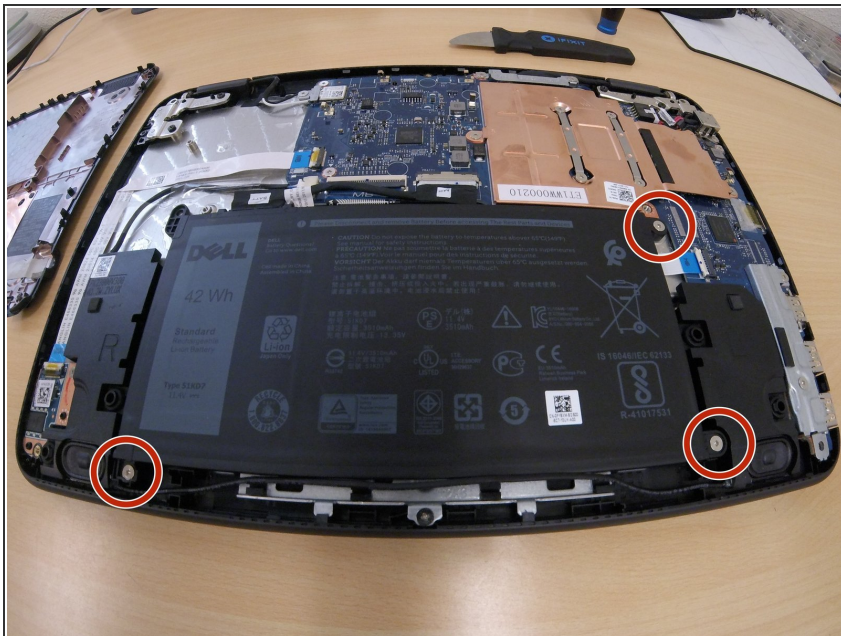
- [Phillips #0 Screwdriver](#) (1)
  - [Plastic blade](#) (1)
  - [Phillips #00 Screwdriver](#) (1)
-

## Step 1 — Remove Bottom Cover / Shell



- Remove the 7 screws from the back cover with a Phillips #0 screwdriver
- Once all 7 screws have been removed, you can start to pry apart the back cover with your Plastic Blade or your fingers. (See pic)

## Step 2 — Remove Battery Screws



- Remove the 3 battery screws with a phillips #00 screwdriver.



### Step 3 — Remove Battery



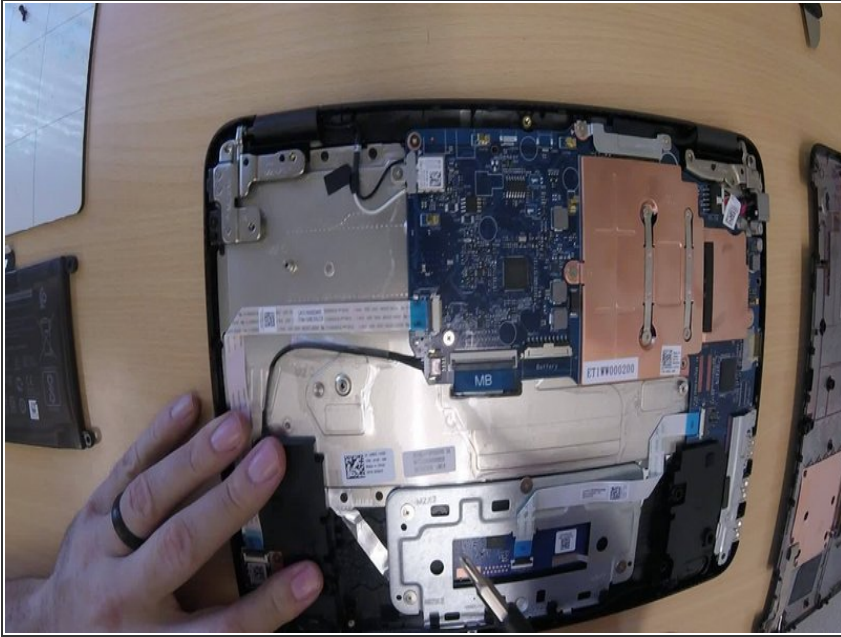
- Remove the battery from the motherboard extension connector

### Step 4 — Remove Left/Right Hinge Screws



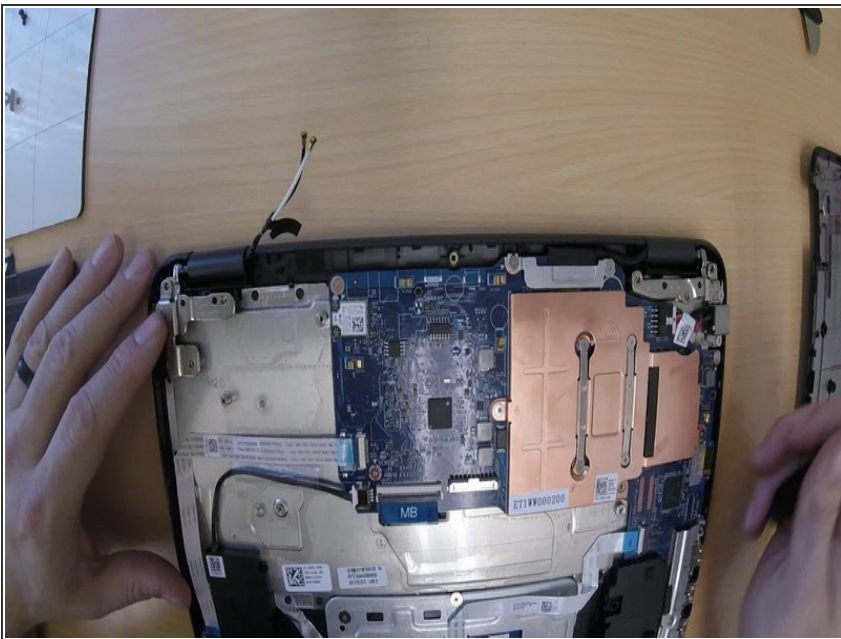
- using a phillips #0, remove the 3 left hinge screws and the 2 right hinge screws.

## Step 5 — Remove Wifi Card



- Using a phillips #0, remove the 1 screw from the wifi card.
- Disconnect both the white and black power wires from the Wifi Card.

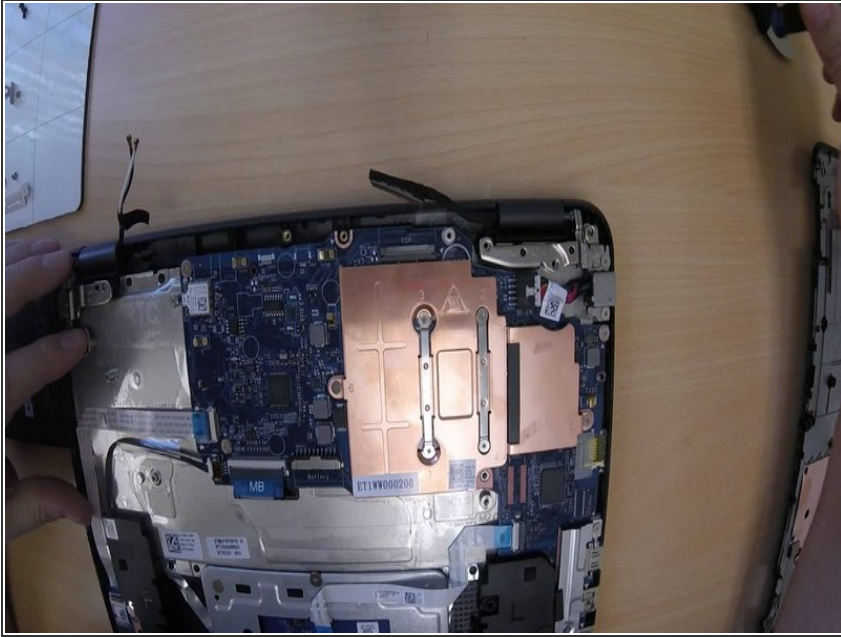
## Step 6 — Disconnect LCD Data Cable



- Remove the LCD data cable from the motherboard. Lift the black clip first in order to release the connector.



## Step 7 — Remove Charging Port



- Lift the right side hinge upward in order to gain access to the charging port area.
- Using your phillips #0, remove the 2 screws.

## Step 8 — Remove Audio Board



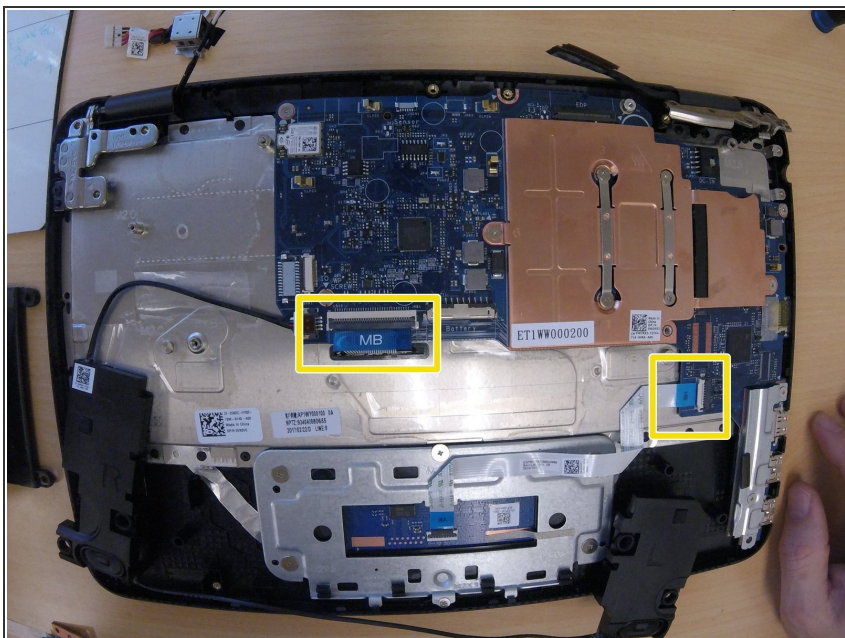
- Remove the audio board data cable from the motherboard.
- Using a phillips#0, remove the 1 screw from the audio board.

## Step 9 — Remove Speakers and Tape



- Lift and remove the tap that is securing the speaker wire to the palmrest.
- Lift both speakers out from there secured areas. You do not need to disconnect the data cable from the motherboard.

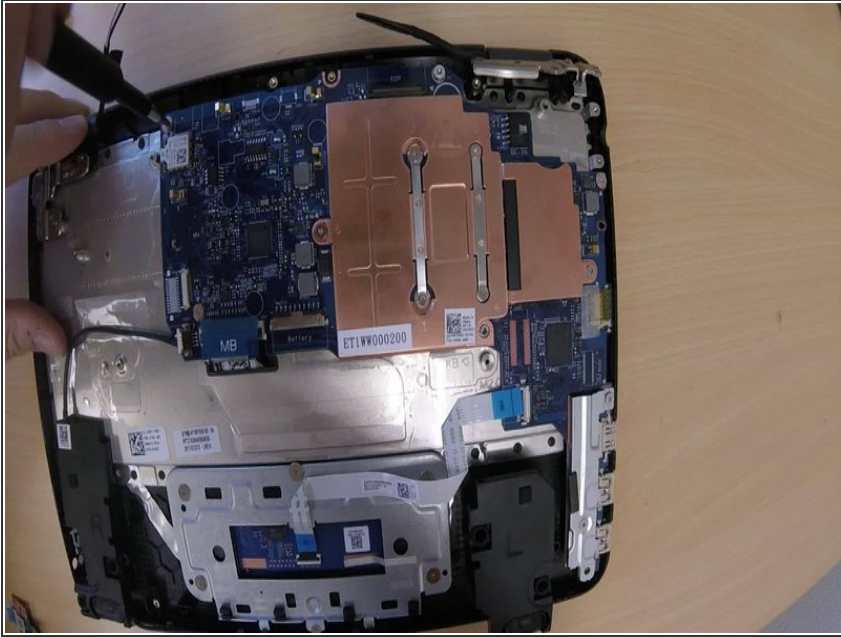
## Step 10 — Disconnect Keyboard/Trackpad Data Cable



- Disconnect the keyboard data cable from the motherboard by lifting up the connector clip.
- Disconnect the trackpad data cable from the motherboard by lifting up the connector clip.



## Step 11 — Remove Motherboard



- Using a phillips#0, remove 6 motherboard screws.
- You do not need to remove all heatsink screws. You only need to remove the left and right side heat sink screws.
- You do not need to remove all the USB cover/brace screws. Only remove the 1 in the top right corner. See video.

## Step 12 — Separate Palmrest from LCD Assembly



- Position both LCD hinges in an upward position to allow space in order to separate the palmrest from the entire LCD assembly
- Separate the palmrest from the LCD Assembly and set the palmrest on the desk with the keyboard face up.



## Step 13 — Remove Keyboard from old Palmrest



- Using the plastic blade tool or any plastic tool of your choice, pry out the keyboard from the palmrest.

## Step 14 — New palmrest & replace old keyboard



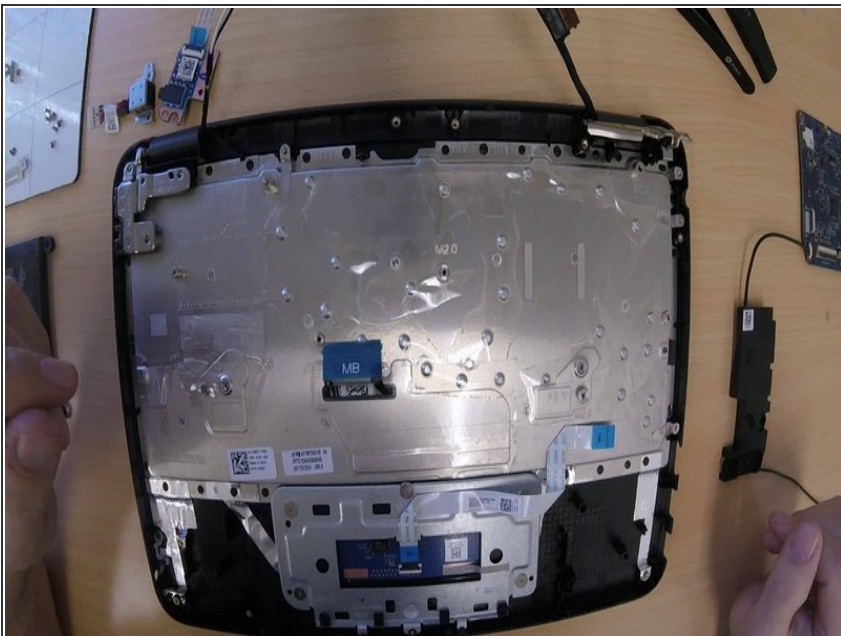
- Replace the old palmrest with a new palmrest
- Install old or new keyboard into the new palmrest
- Make sure to thread the keyboard data cable through the palmrest. See video

## Step 15 — Reconnect Palmrest with LCD Assembly



- Lay the LCD assembly faceup with the hinges at the top.
- Reconnect the palmrest by maneuvering the corners under the LCD hinges.
- Push the left hinge down flush against the palmrest
- Leave the right hinge in an upward position so you can install the motherboard first.

## Step 16 — Insert Motherboard



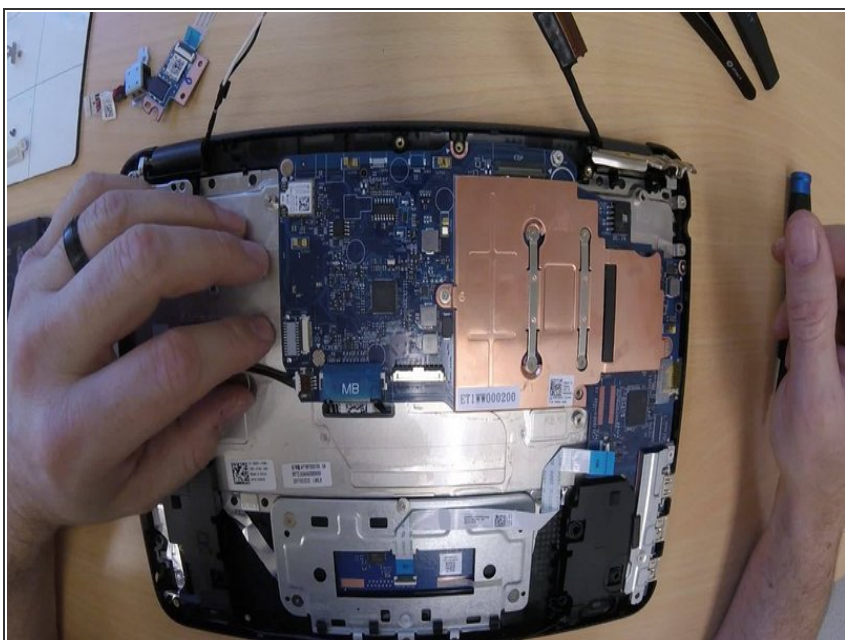
- Carefully insert the motherboard with speakers still attached
- Make sure to keep the keyboard and trackpad data cables above the motherboard. Sometimes they can get caught underneath the motherboard.

## Step 17 — Replace Motherboard Screws



- Using your phillips#0, replace the 6 motherboard screws.
- Make sure the keyboard and trackpad data cables

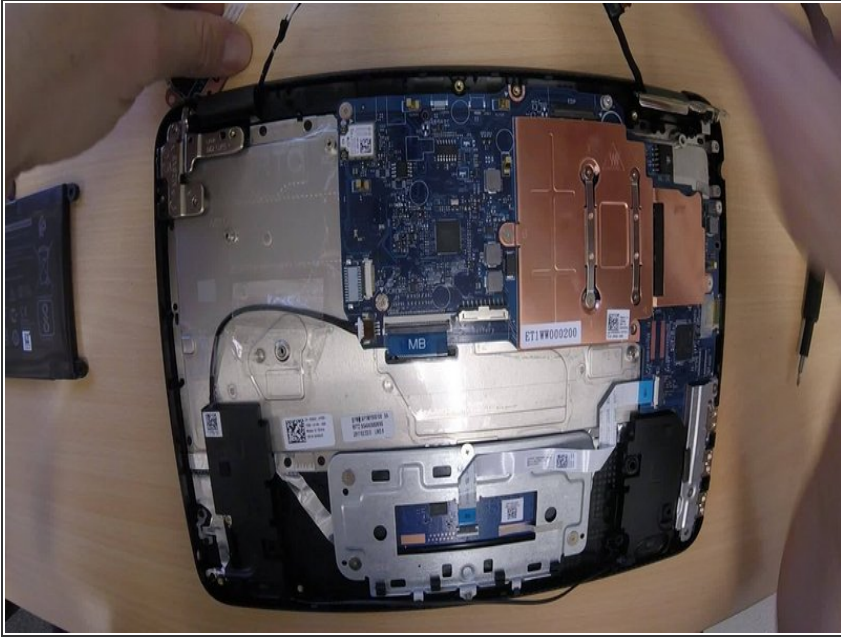
## Step 18 — Connect All Data Cables



- Connect the keyboard data cable to the motherboard. Make sure the connector clip is pressed down to secure the data cable
- Connect trackpad data cable to motherboard. Make sure the connector clip is pressed down to secure the data cable

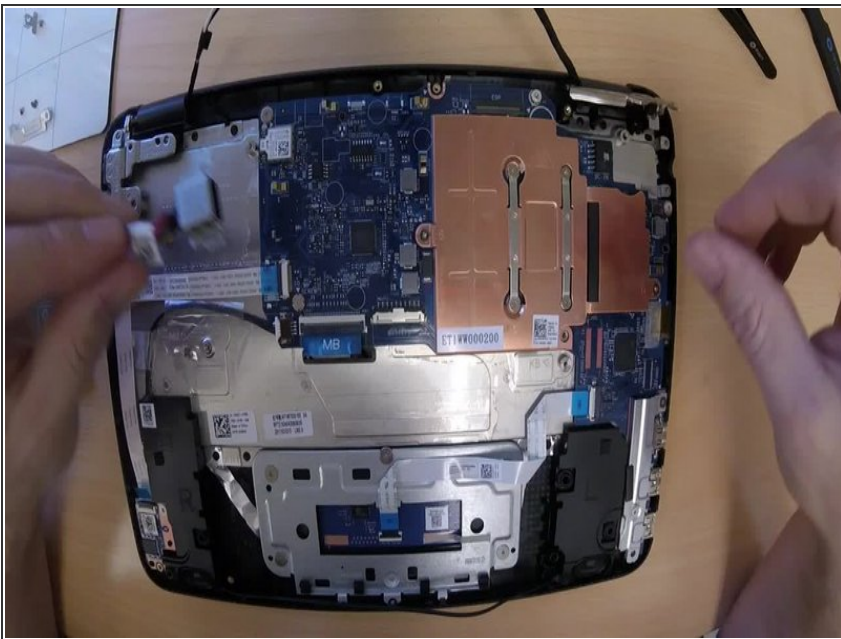


## Step 19 — Install Audio Board



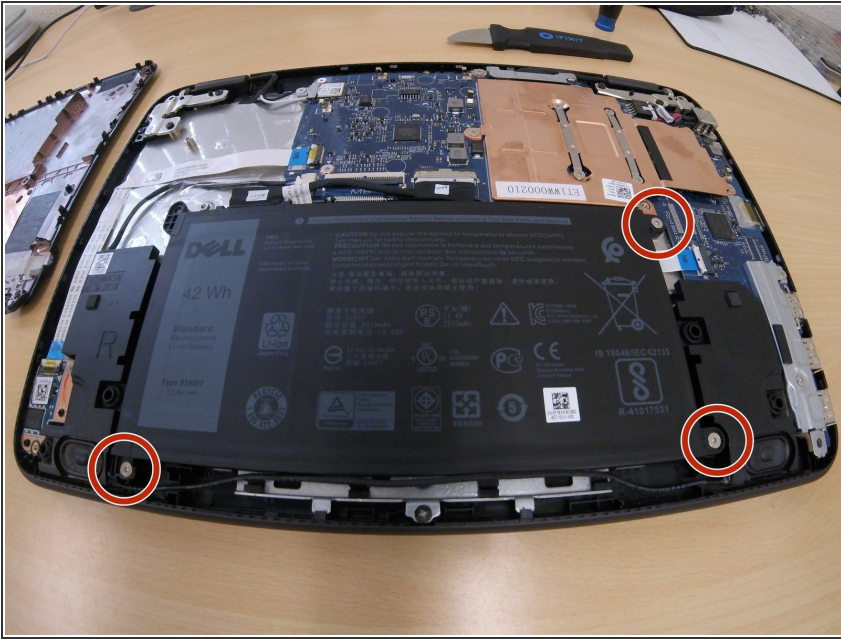
- Connect the audio board data cable to the motherboard connector.
- Using a phillips#0, replace the 1 audio board screw.

## Step 20 — Install Charging Port



- Make sure the right hinge is still in an upward position so you can insert the charging board screws.
- Using a phillips#0, replace the 2 charging port screws.
- Once the charging port is installed, push the right hinge down flush against the motherboard area.

## Step 21 — Install Battery



- Insert the battery while making sure it is flush against the palmrest
- Keep an eye out for the speaker wires that are usually routed toward the bottom of the battery compartment area.

## Step 22 — Replace Left/Right Hinge Screws.



- Using a phillips #0, replace the 3 left hinge screws and 2 right hinge screws.

## Step 23 — Replace Back Cover



- Using a phillips #0, replace the 7 back cover screws.

To reassemble your device, follow these instructions in reverse order.