



# Dell DJ Battery Replacement

This guide will help you determine and fix your battery problems.

Written By: Brittany Abate



---

# INTRODUCTION

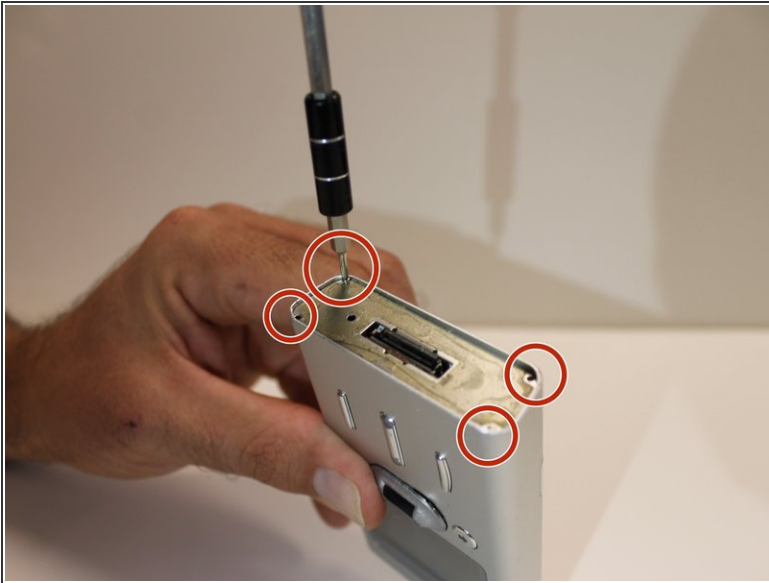
If your battery is dead or just isn't properly holding a charge, follow this guide.



## TOOLS:

- [Metal Spudger](#) (1)
  - [64 Bit Driver Kit](#) (1)
-

## Step 1 — Battery



- First, disassemble the device, taking off the bottom panel. See the [disassembly](#) guide for further directions.

## Step 2



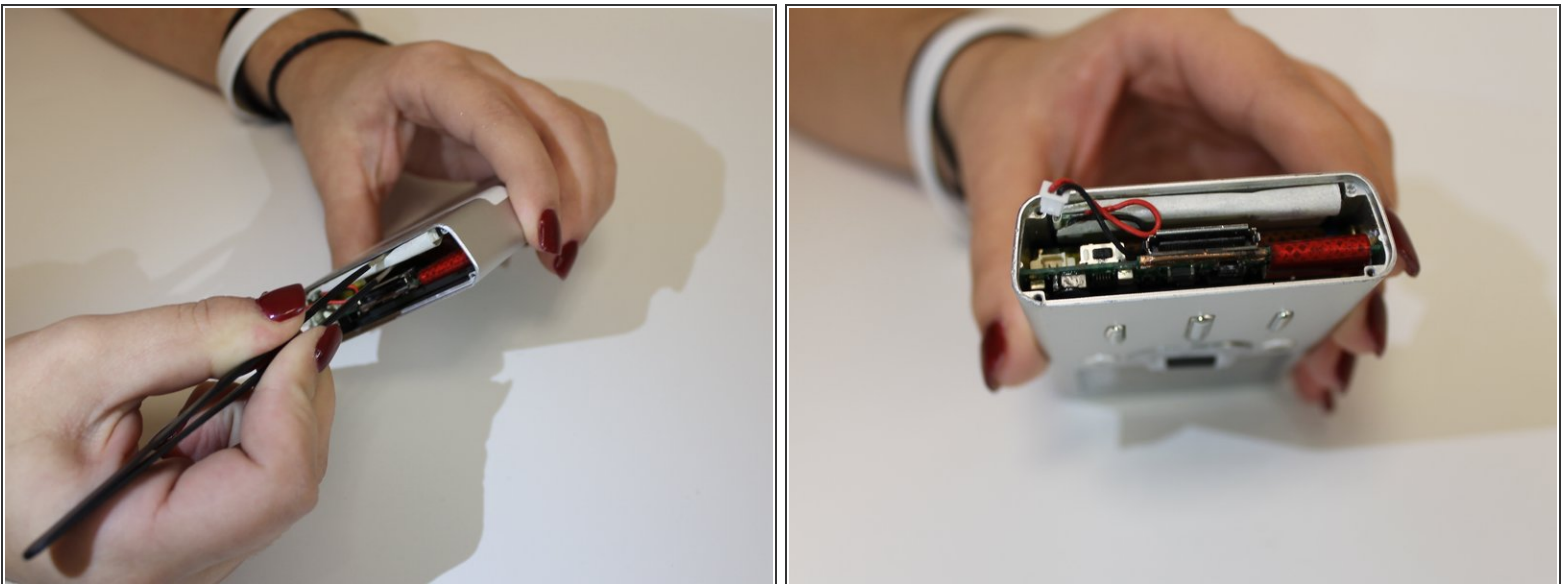
- Using the metal spudger, carefully slide it under the black rubber bottom to remove it.
- Using a Phillips J000 head screw driver, unscrew the 4mm screws placed on the outer corners of the metal plate.
- Again, take the metal spudger, placing it under the metal plate to take it off.

### Step 3



- Once the metal plate is off, inspect the inside of the device to be sure the battery is plugged in and there's nothing blocking it.
- ⓘ Battery malfunction is often caused by internal components that are dirty. Be sure the battery clip is plugged in properly and then reassemble device. Hold the power button and start the device up.

### Step 4



- If the battery is still malfunctioning, carefully unplug the battery using tweezers.
- ⚠ Gently place the tweezers on either side of the batter to slide it out of the shell.

## Step 5



- To replace the battery, simply insert a new one into the same slot and then plug in the end to the correct spot.
- After the device is assembled, power the device on. The issue should be repaired.
- ⓘ If the device battery is still defective, a greater issue is the cause.

To reassemble your device, follow these instructions in reverse order.