



Dell Dimension 4600 Optical Drive Replacement

This is a repair guide for the Dell Dimension 4600 Optical Drive.

Written By: Eugene



INTRODUCTION

Use this guide to replace the optical drive in your computer.



TOOLS:

- [Phillips #2 Screwdriver](#) (1)
-

Step 1 — Side Panel



- Locate the case cover latch on the back of the computer.

Step 2



- Using your index finger, slide and hold the cover latch down.
- While holding the latch down, place your other hand flat on the side of the case and firmly shift the side panel to the left until it disengages.

Step 3



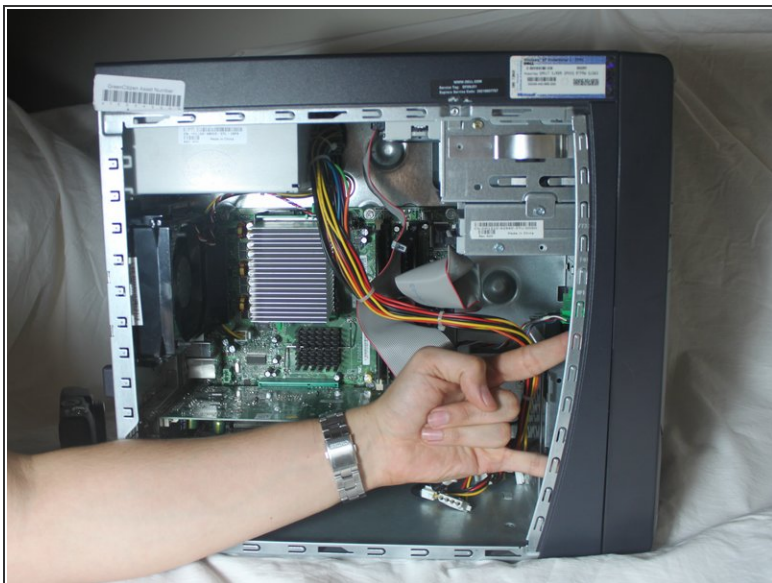
- Grab the edge of the panel and slide it away from the case until it is removed.

Step 4 — Optical Drive



- Locate the Optical Drive by finding it externally on the case.

Step 5



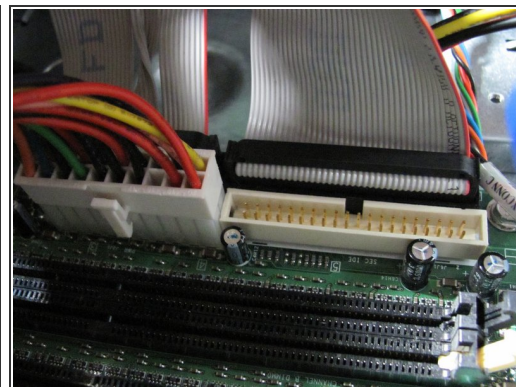
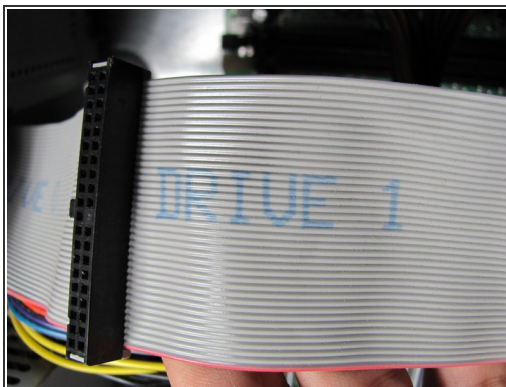
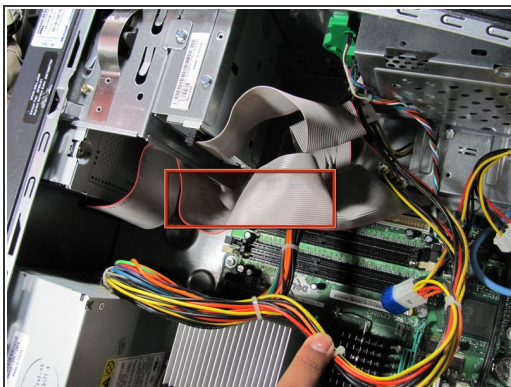
- Press and hold the two levers located behind the front panel.
- While holding the levers down, swing open the front panel.

Step 6



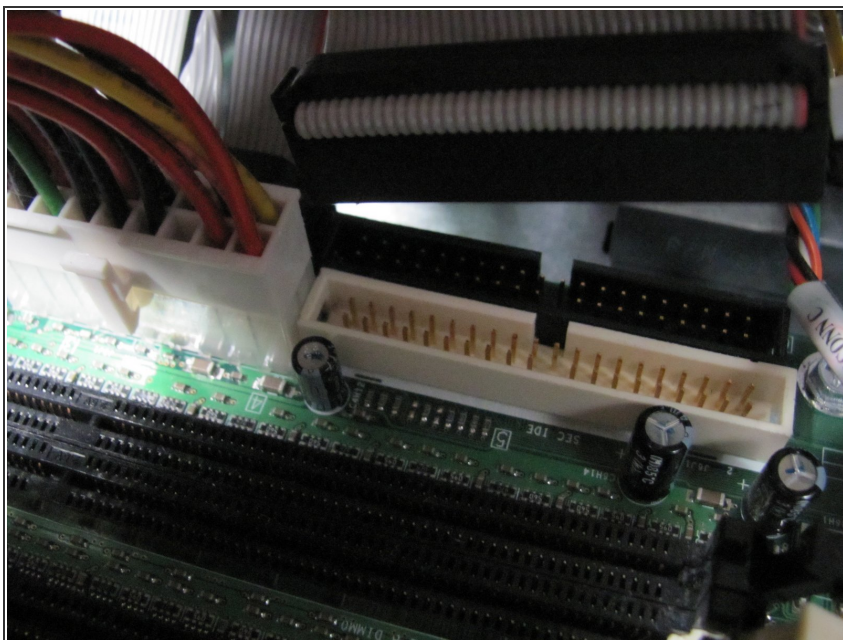
- Swing the front of the case open until it separates from the main case.

Step 7



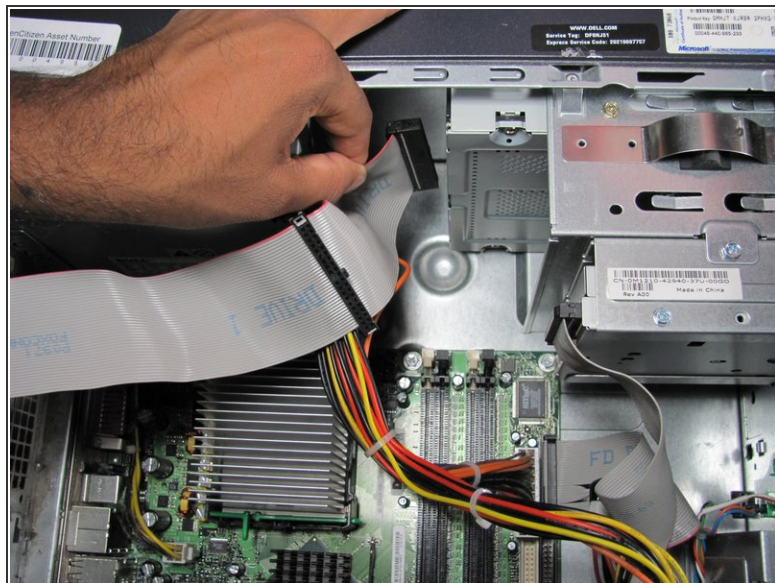
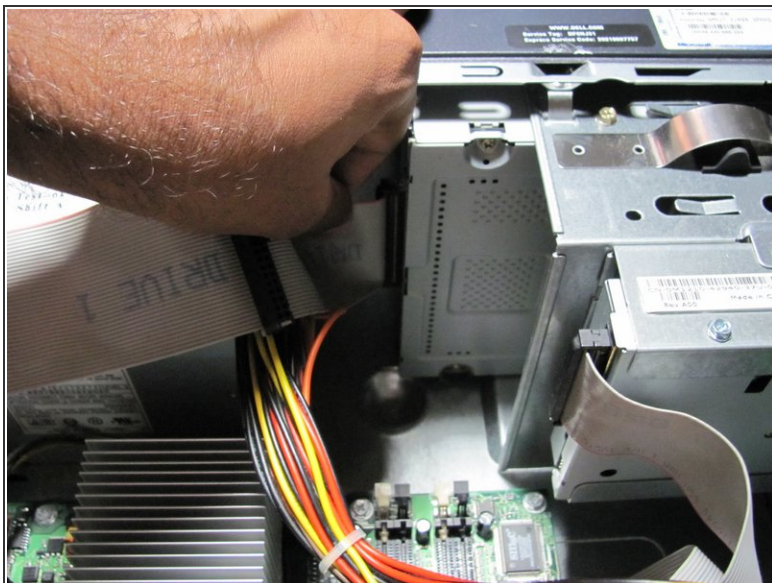
- ❗ Lay the computer flat on its side so that you are looking down on all of the components.
 - Locate the Drive 1 cable and where it is connected to the motherboard.

Step 8



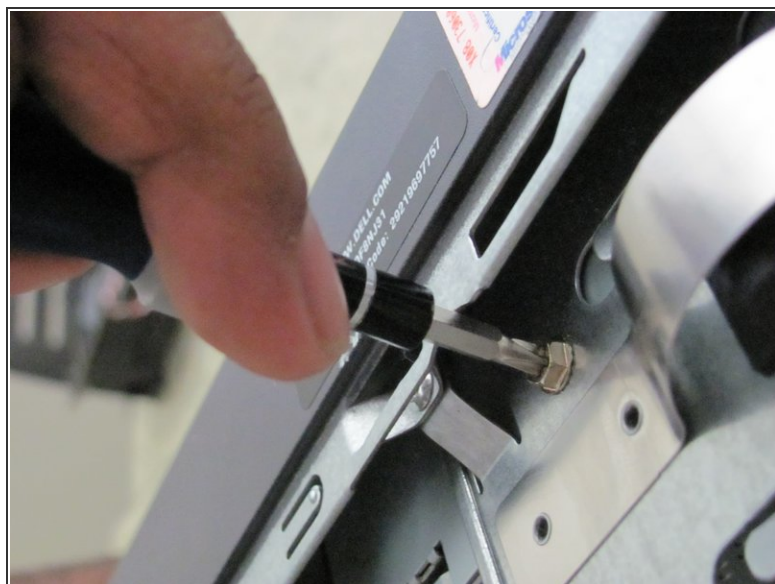
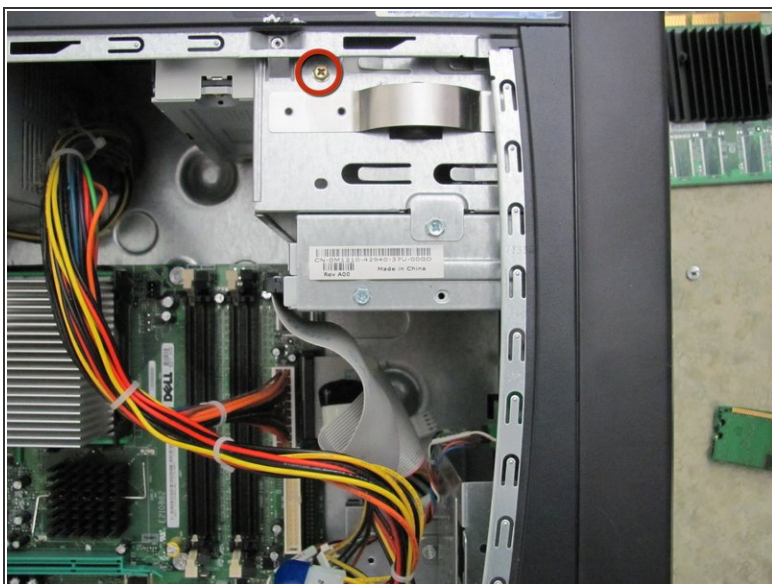
- Grasp the end of the Drive 1 cable connected to the motherboard and firmly pull upwards until it is removed.

Step 9



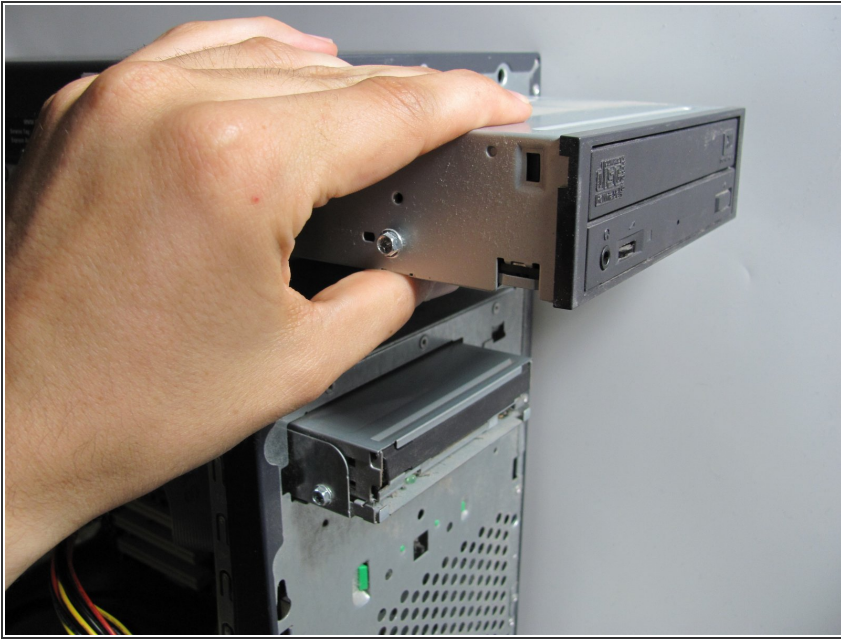
- Locate the end of the Drive 1 cable connected to the optical drive.
- Grasp the cable and pull firmly to disconnect it from the optical drive.

Step 10



- Locate the screw on the optical drive.
- Remove the 7.7 mm screw by using a Phillips #2 screw-driver.

Step 11



- Remove the optical drive by sliding it out of the front of the case.

To reassemble your device, follow these instructions in reverse order.