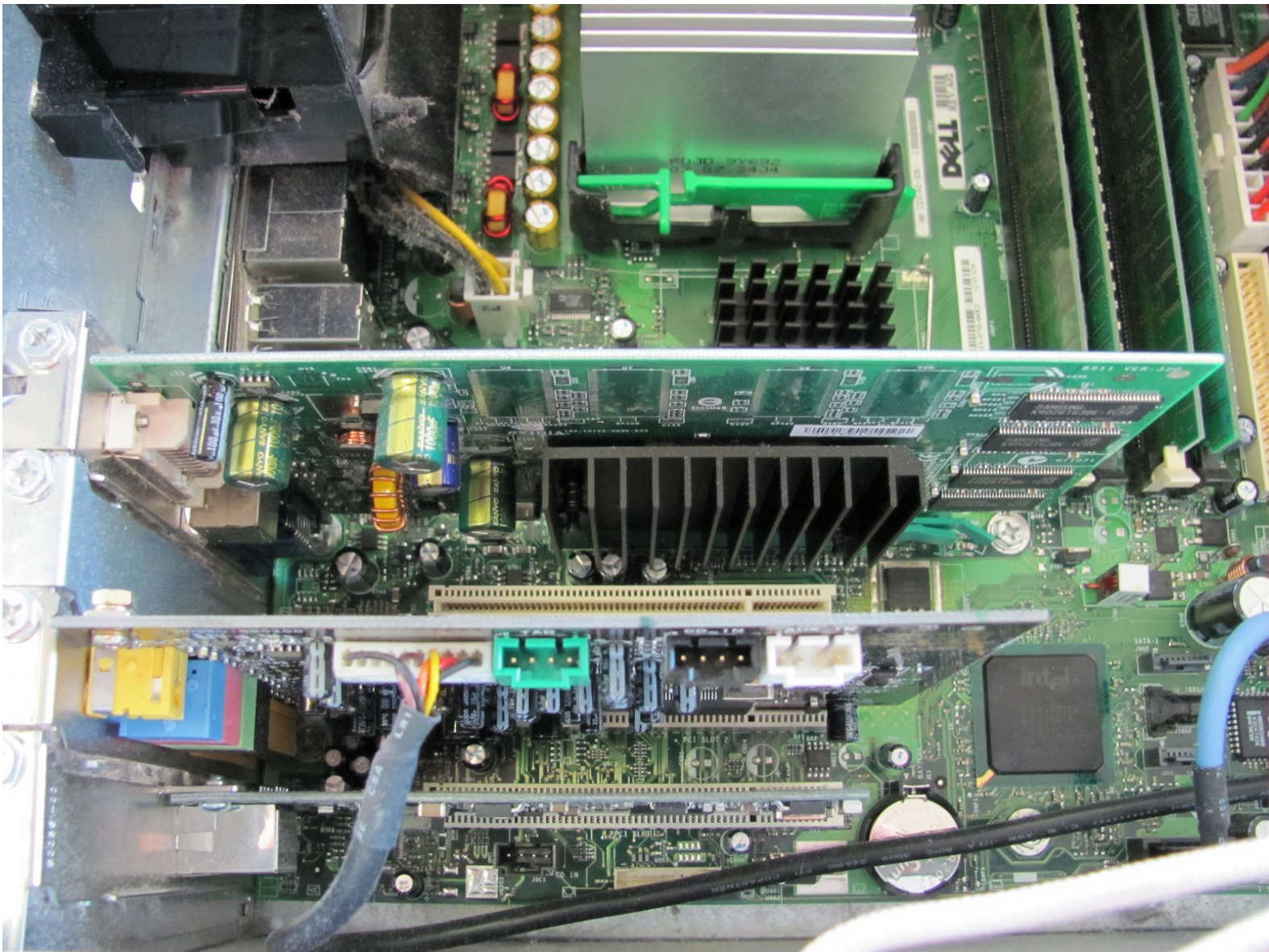




# Dell Dimension 4600 Sound Card Replacement

How to correctly repair the Sound Card in the Dell Dimension 4600.

Written By: Arvind



---

## INTRODUCTION

Use this guide to replace the sound card in your computer.



### TOOLS:

- [Phillips #2 Screwdriver](#) (1)
-



## Step 1 — Side Panel



- Locate the case cover latch on the back of the computer.

## Step 2



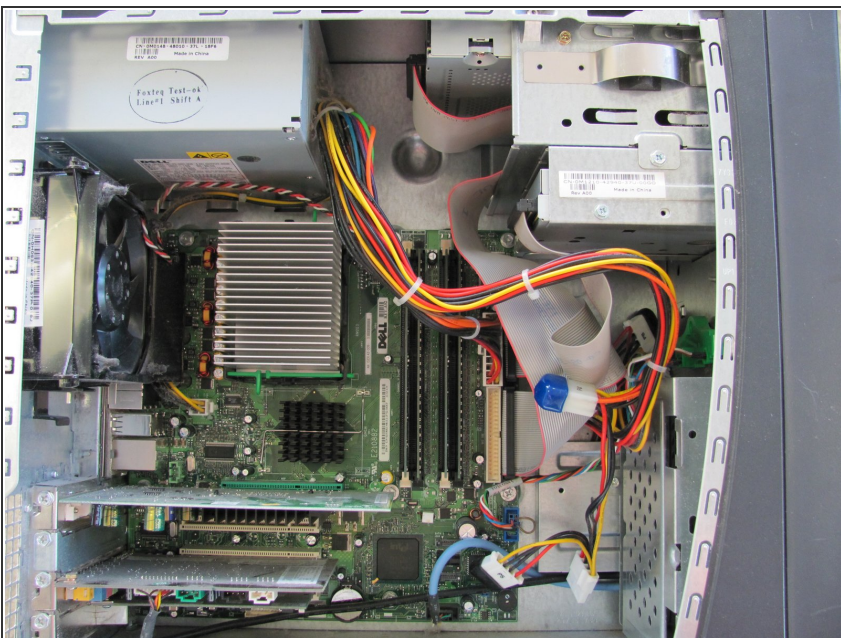
- Using your index finger, slide and hold the cover latch down.
- While holding the latch down, place your other hand flat on the side of the case and firmly shift the side panel to the left until it disengages.

## Step 3



- Grab the edge of the panel and slide it away from the case until it is removed.

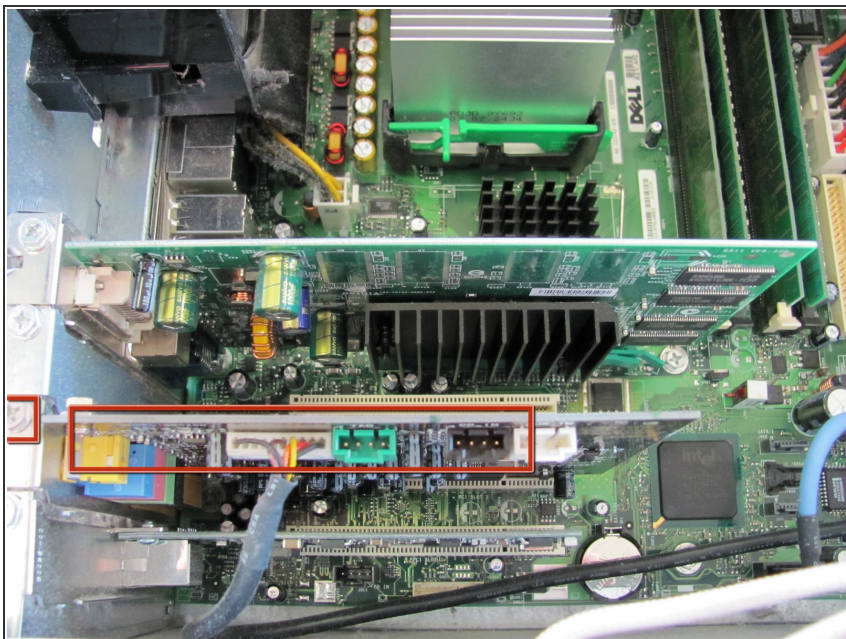
## Step 4 — Sound Card



- ⓘ Lay the computer flat on its side so that you are looking down on all of the components.
- ⚠ Very important at this point you connect your antistatic wrist strap to the chassis because the computer is no longer connected to ground at the power source. There is potential for static discharge which could destroy components.

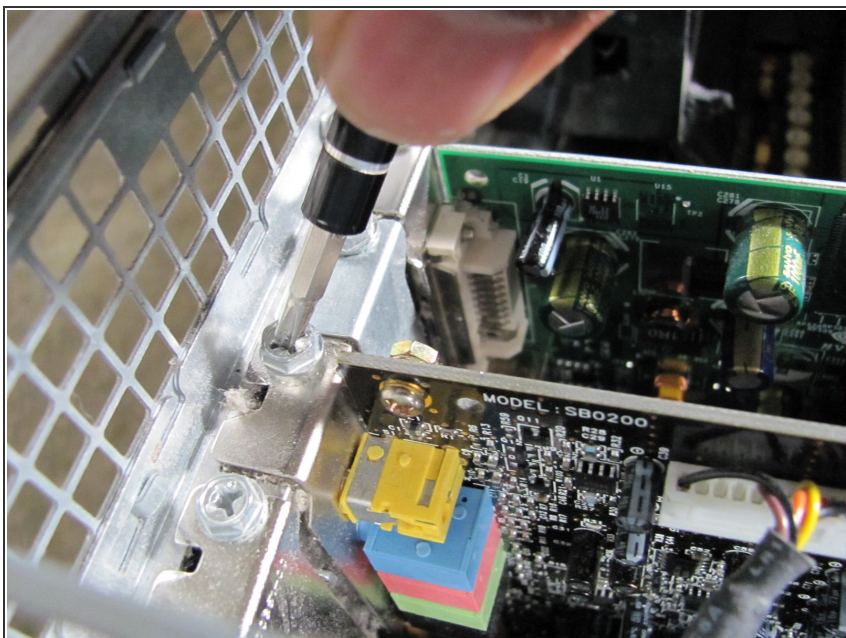


## Step 5



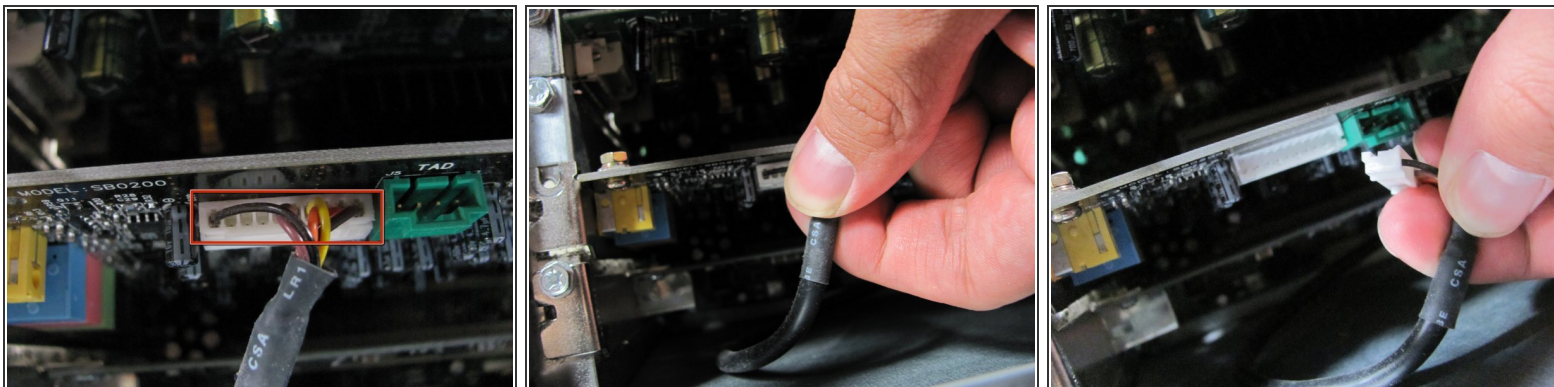
- Locate the Sound Card and the screw attached to the Sound Card as shown in the picture.

## Step 6



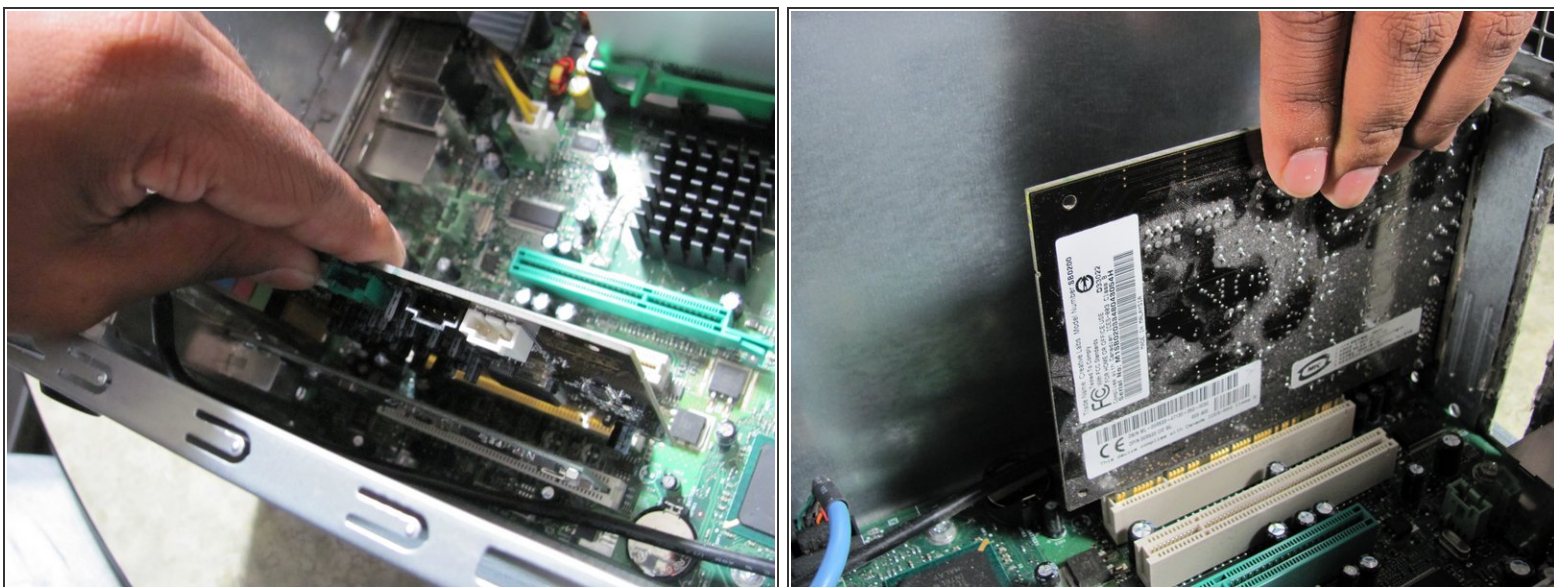
- Remove the 8.9 mm screw by using a Phillips #2 screw-driver.

## Step 7



- Locate and remove the white connector on the sound card by pulling on the black cable.

## Step 8



- Grasp the Sound Card and pull it up and out of it's slot.

To reassemble your device, follow these instructions in reverse order.