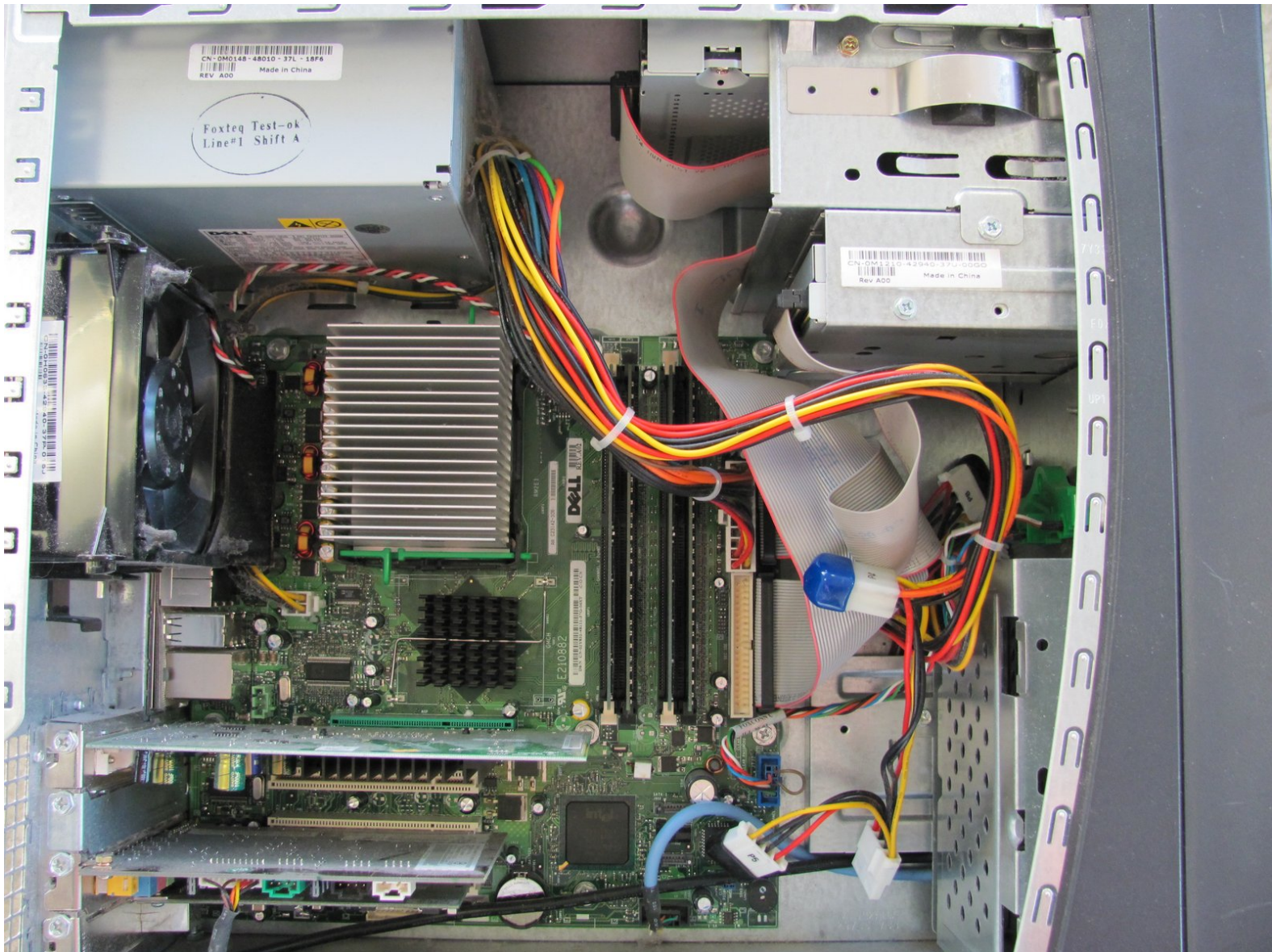




Dell Dimension 4600 Video Card Replacement

How to correctly replace the Video Card from Dell Dimension 4600.

Written By: Arvind



INTRODUCTION

Use this guide to replace the video card in your computer.



TOOLS:

- [Phillips #2 Screwdriver](#) (1)
-

Step 1 — Side Panel



- Locate the case cover latch on the back of the computer.

Step 2



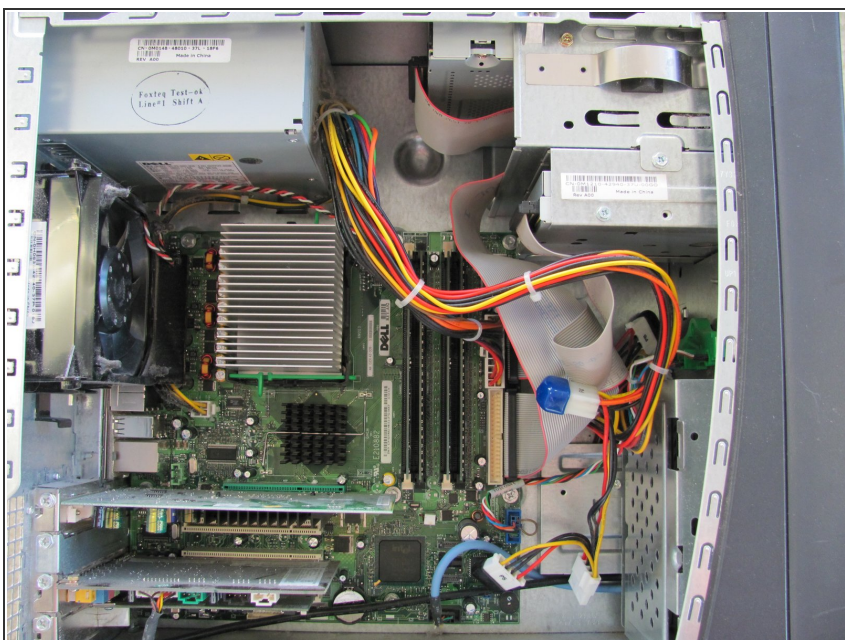
- Using your index finger, slide and hold the cover latch down.
- While holding the latch down, place your other hand flat on the side of the case and firmly shift the side panel to the left until it disengages.

Step 3



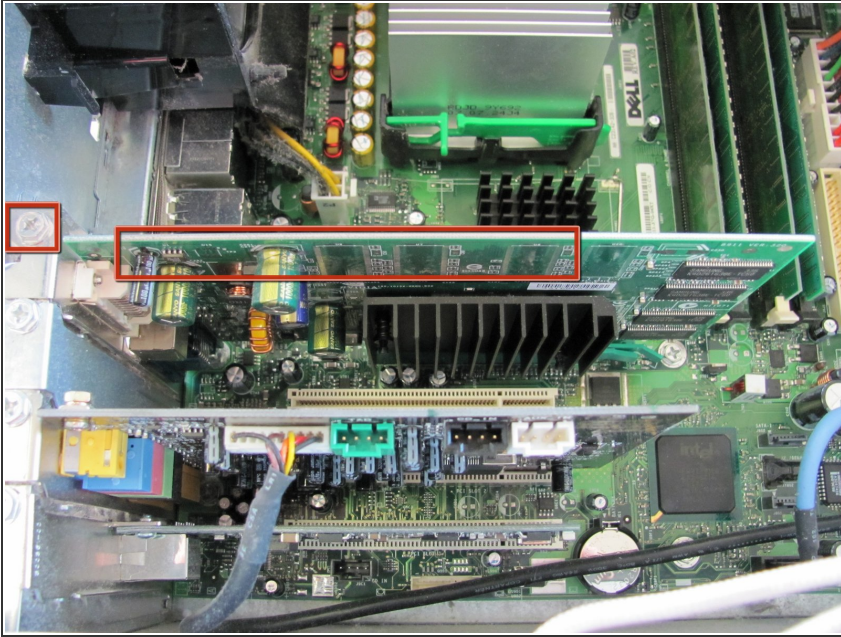
- Grab the edge of the panel and slide it away from the case until it is removed.

Step 4 — Video Card



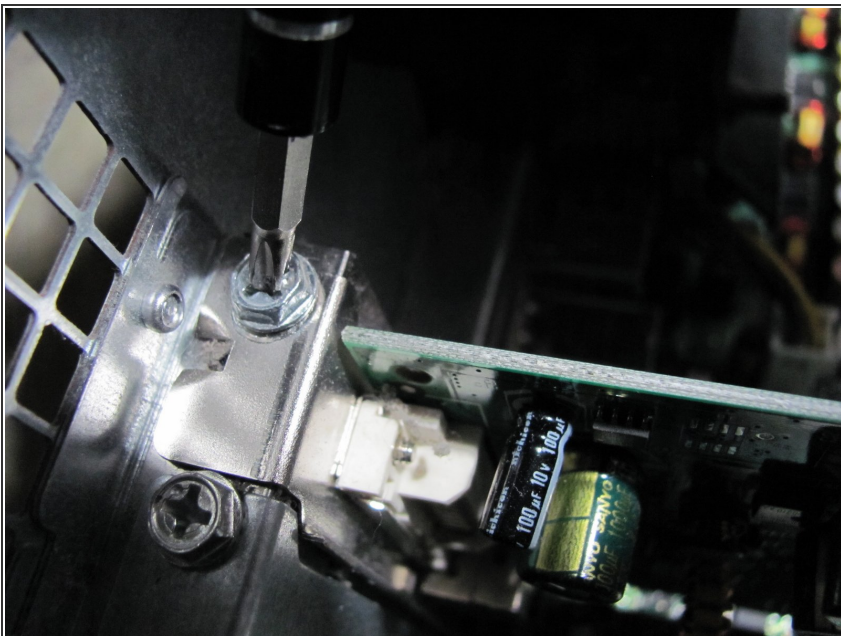
- ① Lay the computer flat so that you are looking down on all of the components.

Step 5



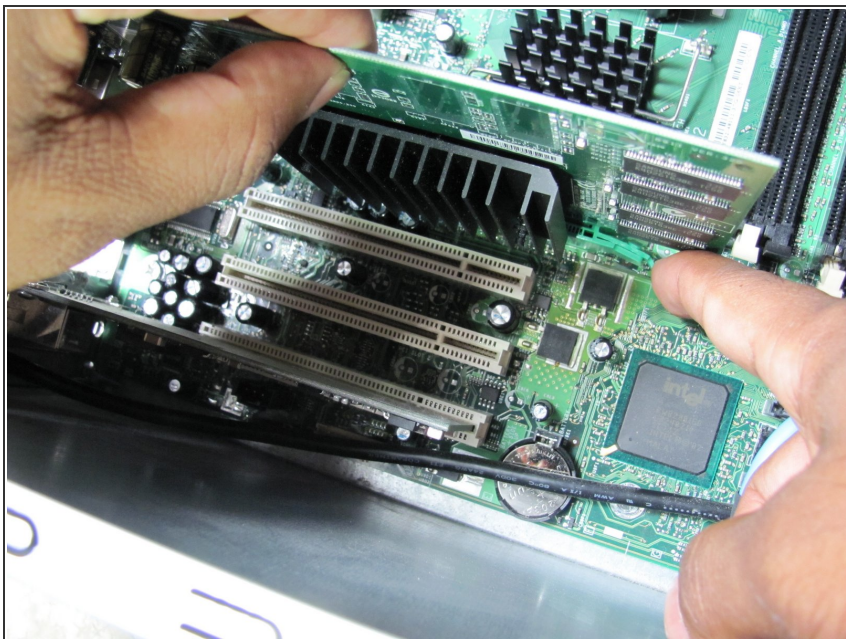
- Locate the Video Card and the screw attached to the Video Card as shown in the picture.

Step 6



- Remove the 8.9 mm screw by using a Phillips #2 screw-driver.

Step 7



- Push down on the green clip located by the bottom right corner of the video card while simultaneously pulling the card up with your other hand.

Step 8



- Pull the remainder of the card up and out of it's slot.

To reassemble your device, follow these instructions in reverse order.