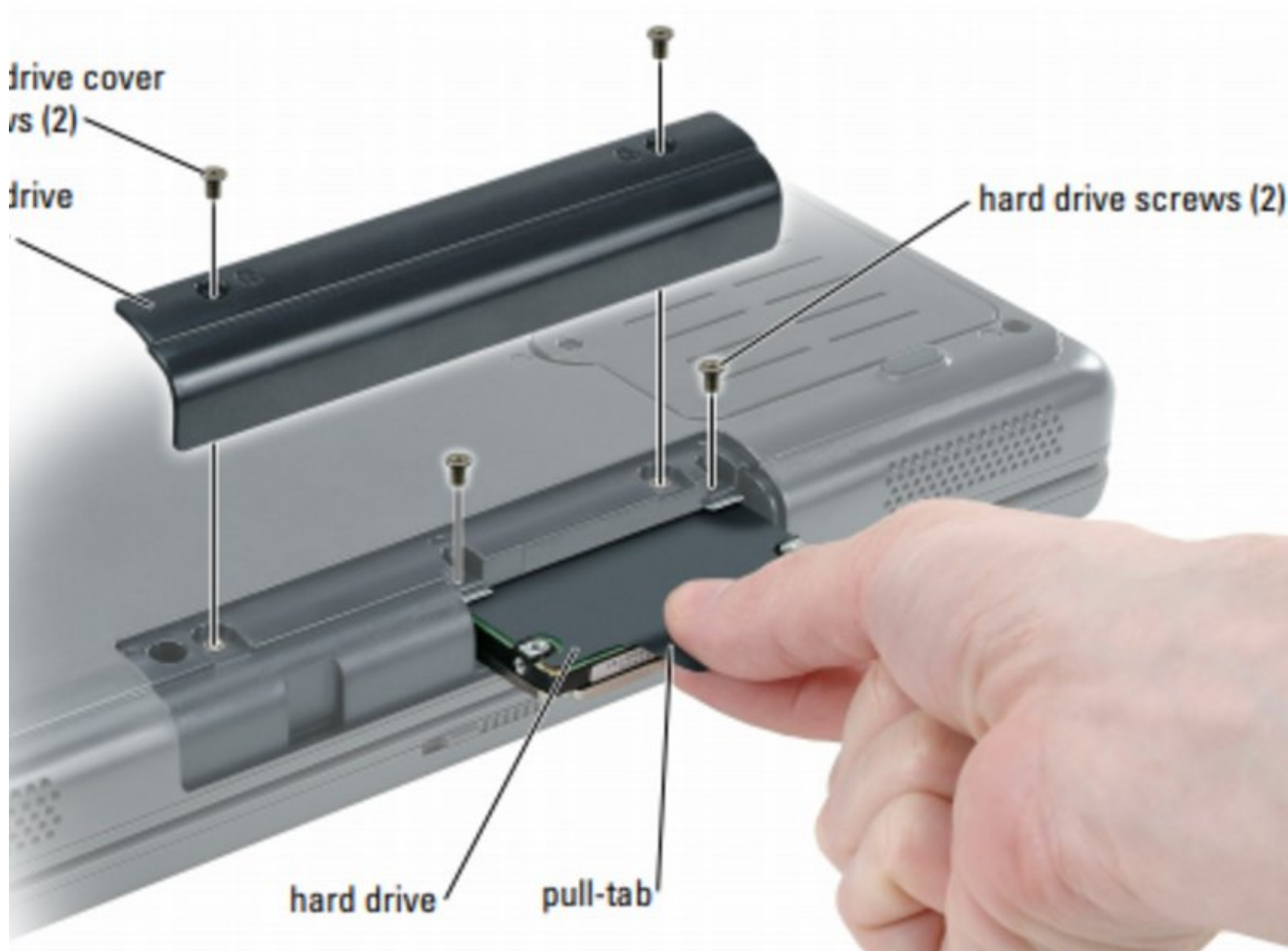




Dell Inspiron 1000 Hard-Drive Replacement

How to remove and replace a hard-drive

Written By: darrius

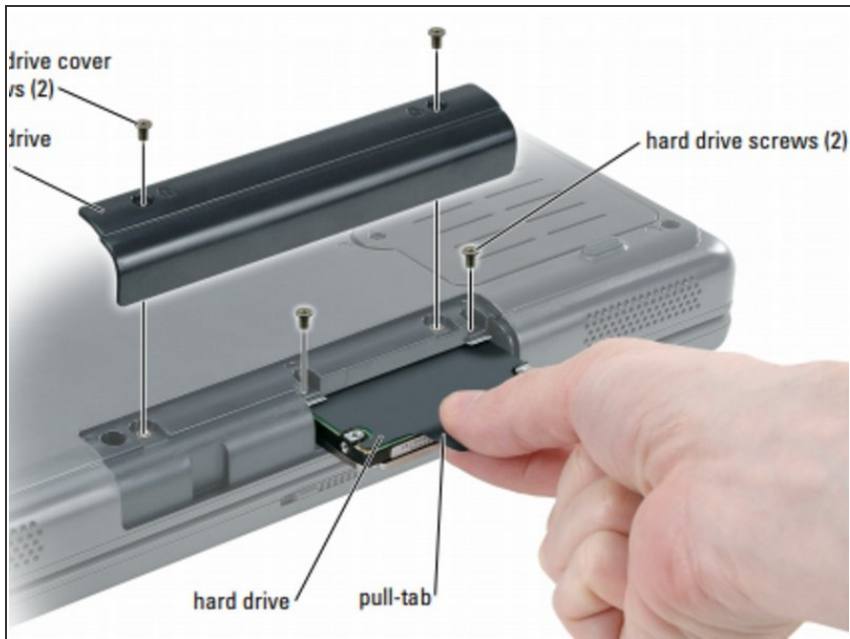




TOOLS:

- [Phillips #0 Screwdriver](#) (1)
-

Step 1 — Warning Safety Precautions

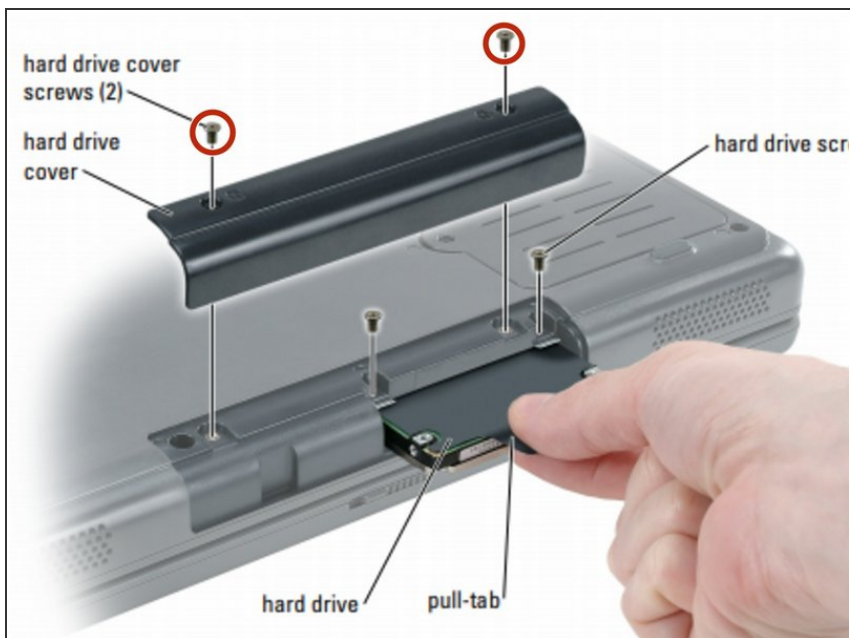


⚠ Before Working Inside Your Computer

- Use the following safety guidelines to help protect your computer from potential damage and to help ensure your own personal safety.

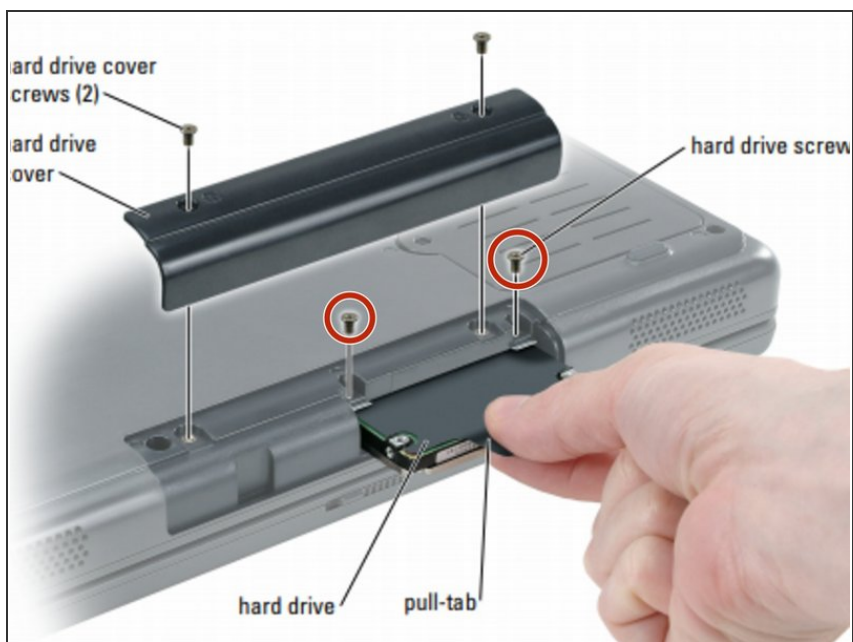
⚠ CAUTION: Before you begin any of the procedures in this section, follow the safety instructions in the Product Information Guide..

Step 2 — Removing The Two Screws



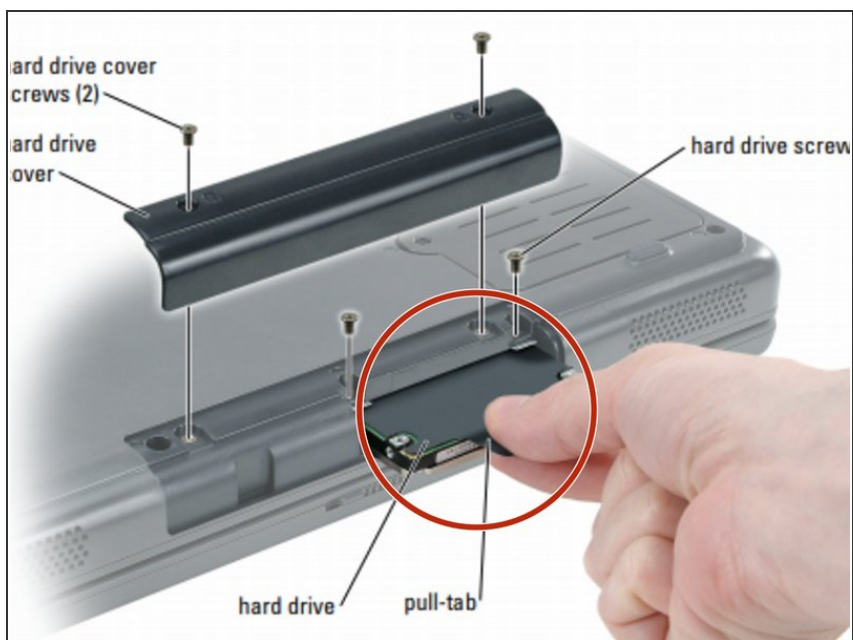
- Turn the computer over and remove the hard drive cover screws, the cover, and the hard drive screws.

Step 3 — Removing The Two Screws



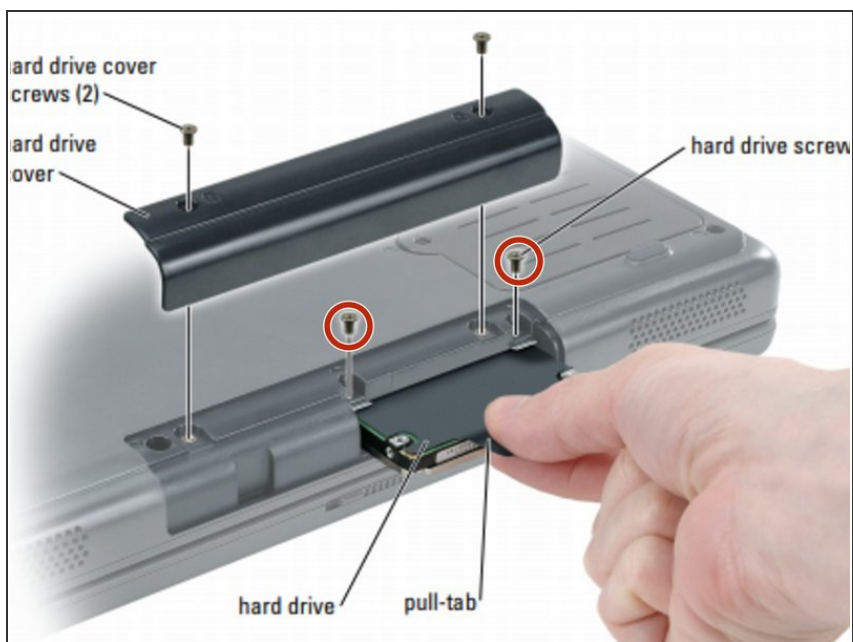
- Removing the two screws from the hard-drive.

Step 4 — Removing The Hard-Drive



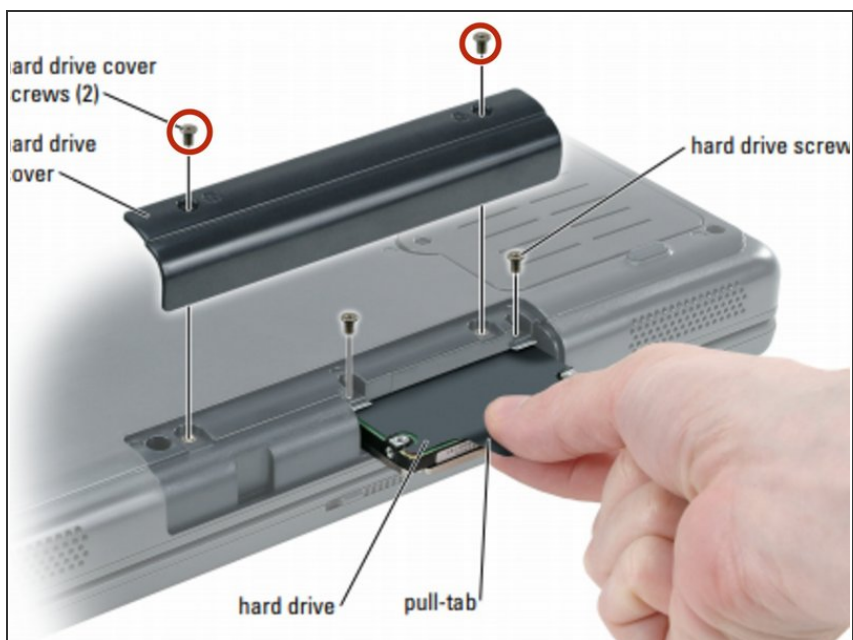
- Slide the hard drive out of the computer.

Step 5 — Placing The Two Screws



- Securing the screws to the "NEW" hard-drive.

Step 6 — Placing The Two Screws



- Securing the screws to the cover

To reassemble your device, follow these instructions in reverse order.